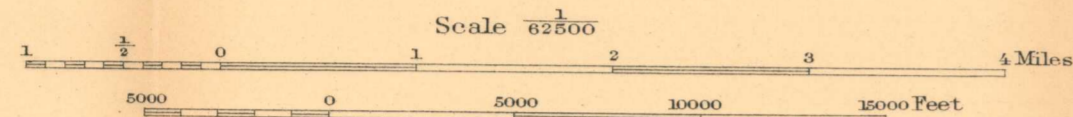


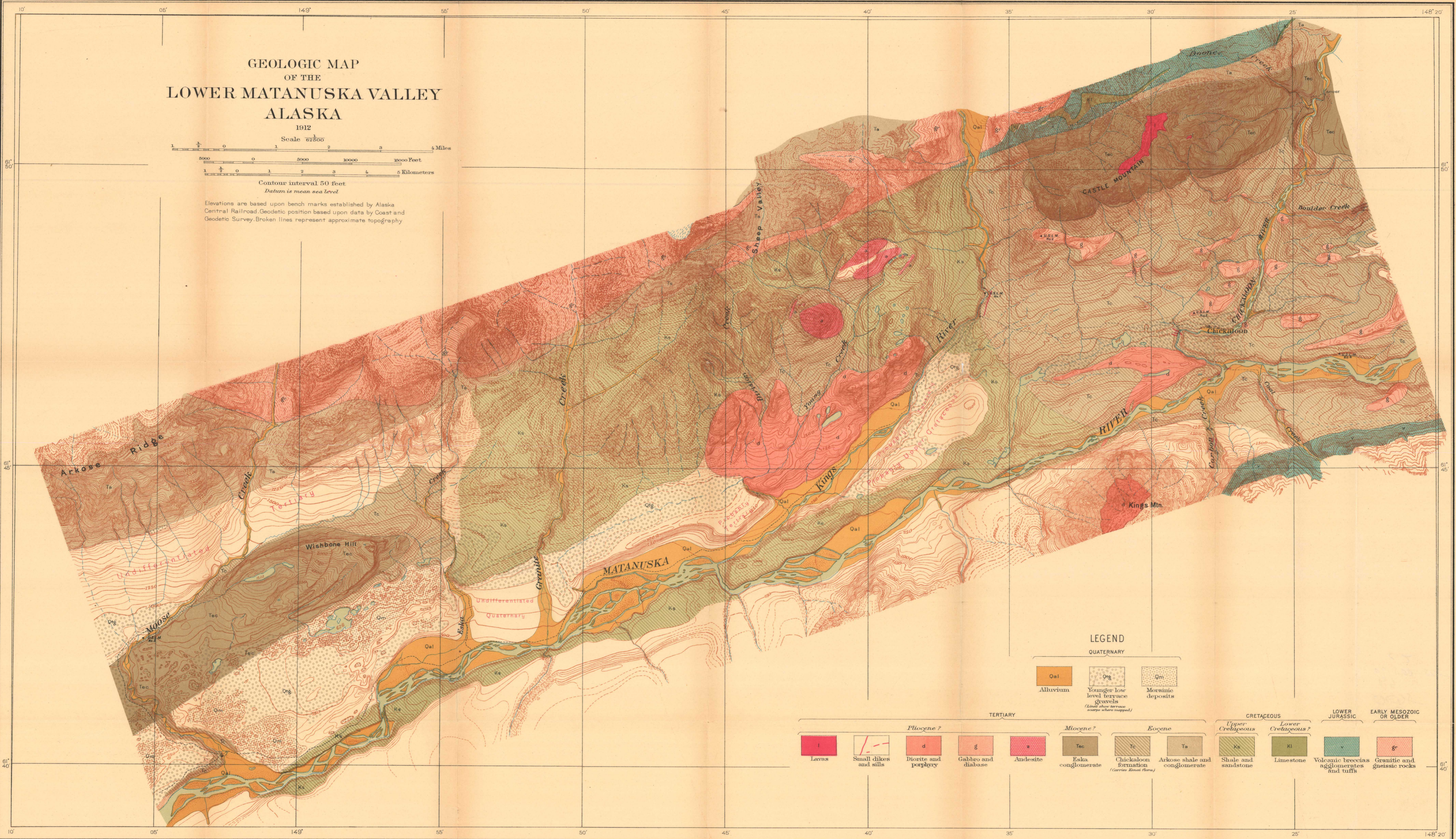
GEOLOGIC MAP OF THE LOWER MATANUSKA VALLEY ALASKA

1912



Contour interval 50 feet
Datum is mean sea level

Elevations are based upon bench marks established by Alaska Central Railroad. Geodetic position based upon data by Coast and Geodetic Survey. Broken lines represent approximate topography.

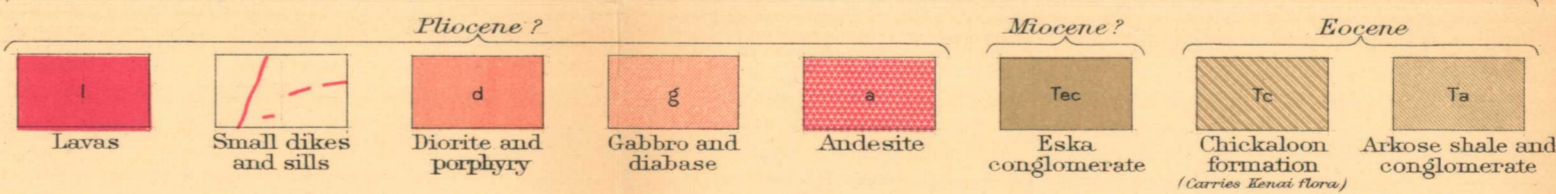


LEGEND

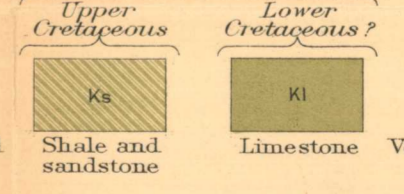
QUATERNARY



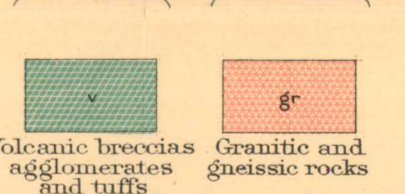
TERTIARY



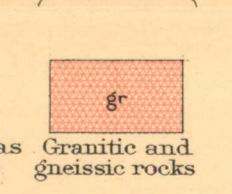
CRETACEOUS



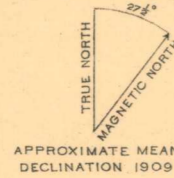
LOWER JURASSIC



EARLY MESOZOIC OR OLDER



Alfred H. Brooks, Geologist in charge of Division.
Topography by R. H. Sargent.
Control by R. H. Sargent.
Surveyed in 1909.



Geology by G. C. Martin, F. J. Katz, and Theodore Chapin.
Surveyed in 1910 under direction of Alfred H. Brooks.