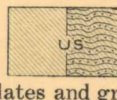
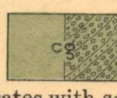
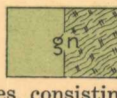
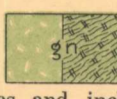
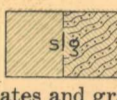
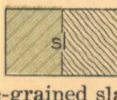
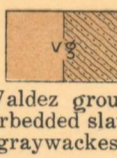
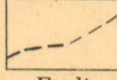
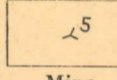
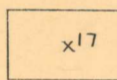


LEGEND

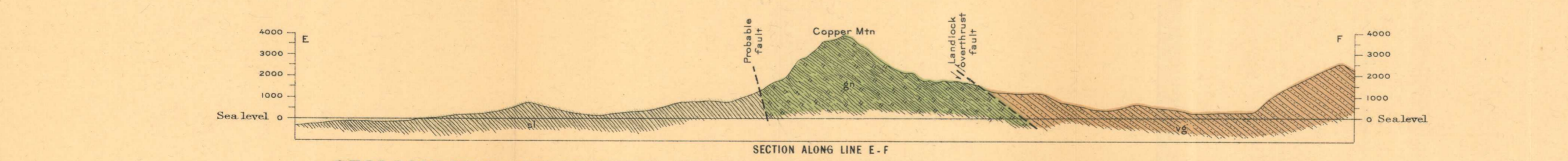
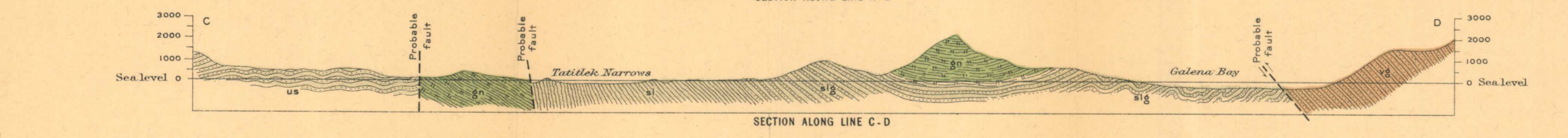
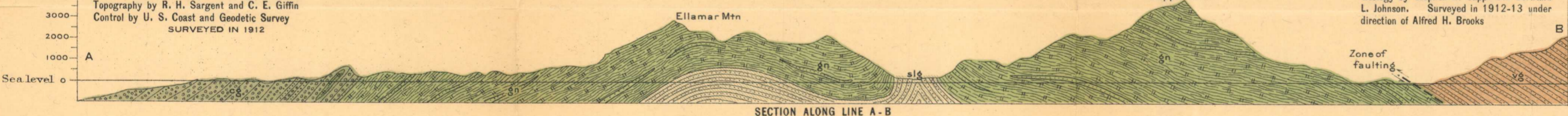
-  Upper slates and graywackes of Bligh Island
 -  Conglomerates with some arkoses and a little slate. Some interbedded diabase flows near base.
 -  Greenstones, consisting principally of little-metamorphosed ellipsoidal and massive diabase flows, with some intrusive diabase. Contains locally considerable slate and graywacke interbedded with the flows.
 -  Greenstones and included sediments, more or less metamorphosed.
 -  Lower slates and graywackes.
 -  Black, fine-grained slates, with a little interbedded graywacke.
 -  Valdez group (interbedded slates and graywackes)
 -  Fault
 -  Mine
(Number refers to list below)
 -  Prospect
(Number refers to list below)
- MINES AND PROSPECTS**
- 1 ELLAMAR MINE
 - 2 THREEMAN MINING CO.
 - 3 LANDLOCK BAY COPPER MINING CO.
 - 4 STANDARD COPPER MINES CO.
 - 5 GALENA BAY MINING CO.
 - 6 S. A. HEMPLE
 - 7 REYNOLDS - ALASKA DEVELOPMENT CO.
 - 8 FIELDER & HEMPLE
 - 9 T. B. GROVE
 - 10 CHISNA CONSOLIDATED MINES CO.
 - 11 L. P. M. FALCK
 - 12 PETER STEINMETZ
 - 13 TIBBITS
 - 14 CHAS. RUA
 - 15 L. W. WAGNER
 - 16 A. S. McNAUGHTON, E. H. TURNER
 - 17 L. E. BANZER

Elevation in feet
4000
3000
2000
1000
Sea level 0

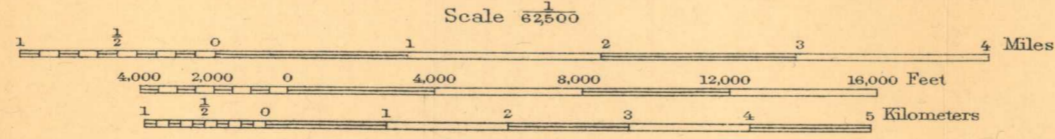
Alfred H. Brooks, Geologist in charge of division
Topography by R. H. Sargent and C. E. Giffin
Control by U. S. Coast and Geodetic Survey
SURVEYED IN 1912

Elevation in feet
4000
3000
2000
1000
Sea level 0

Geology by Stephen R. Capps and Bertrand L. Johnson, Surveyed in 1912-13 under direction of Alfred H. Brooks



GEOLOGIC MAP AND SECTIONS OF ELLAMAR DISTRICT, PRINCE WILLIAM SOUND, ALASKA



Contour interval 100 feet
Datum is mean sea level
Broken lines represent probable topography unsurveyed

