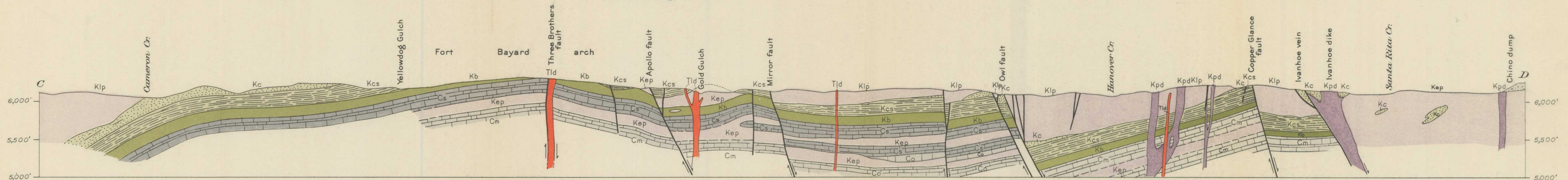
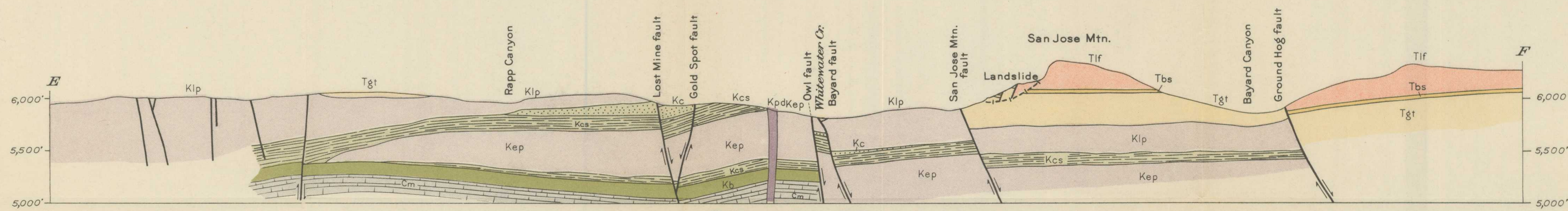


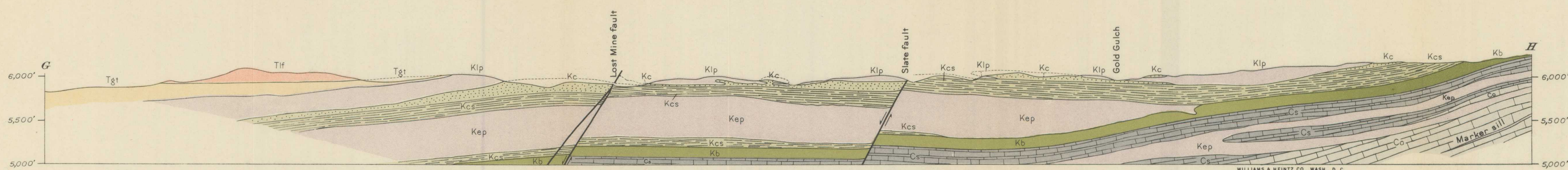
Section along line A-B



Section along line C-D



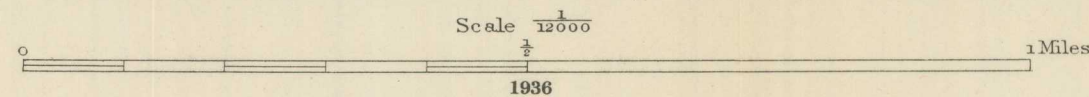
Section along line E-F



Section along line G-H

EXPLANATION
 Tif, quartz latite flows; Tld, quartz latite dikes;
 Tbs, brown sand; Tgt, gravel, sand, and tuff; Kpd,
 granodiorite porphyry dikes; Klp, later quartz
 diorite; Kep, earlier quartz diorite; Kc, sandstone
 member of Colorado formation; Kcs, shale member
 of Colorado formation; Kb, Beartooth quartzite;
 Cs, Syrena formation; Co, Oswald formation; Cm,
 Magdalena group (Oswald and Syrena formations)
 undifferentiated.

GEOLOGIC STRUCTURE SECTIONS OF THE BAYARD AREA OF THE CENTRAL MINING DISTRICT, GRANT COUNTY, N. MEX.



U.S. GEOLOGICAL SURVEY
 BULLETIN 870 PLATE 2
 1936
 WILLIAMS & HEINTZ CO., WASH., D. C.