



EXPLANATION

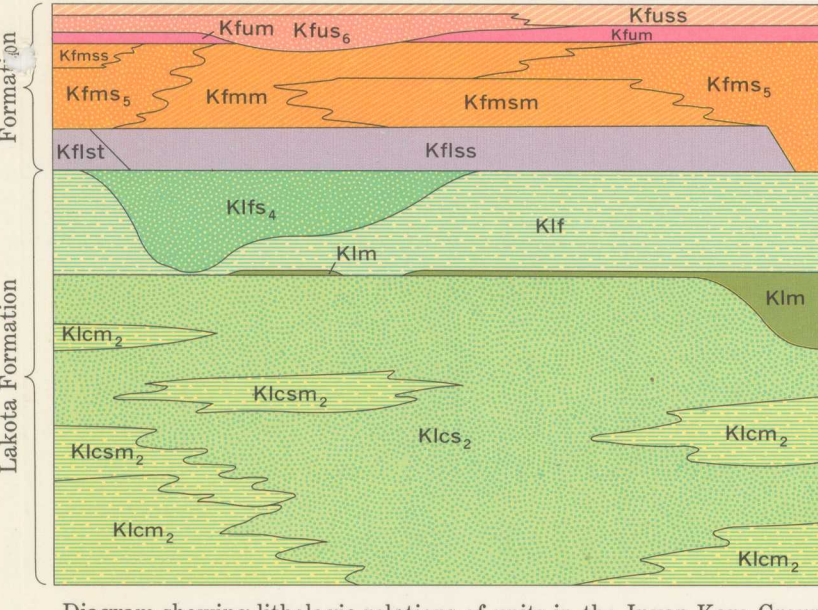
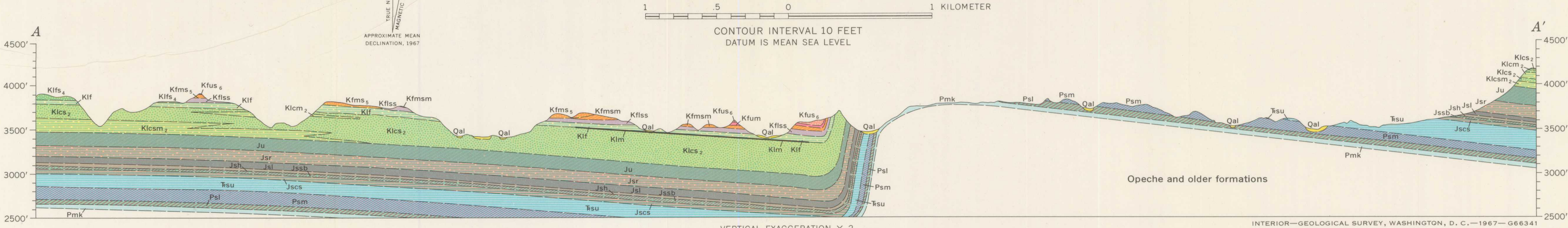
- Qal
Alluvium
- Qw
Windblown sand
Possibly of alluvial origin
- Qtg
Terrace gravel
- Ql
Landslide debris
- Kc
Carlile Shale
- Kgu
Kgl
Greenhorn Formation
*Kgu, upper slaty limestone
Kgl, lower calcareous shale*
- Kbf
Belle Fourche Shale
- Km
Mowry Shale
- Ksc
Skull Creek Shale
- Kfuss Kfus₆ Kfum
Upper unit
Kfuss, interbedded sandstone and siltstone
Kfus₆, sandstone
Kfum, red to variegated mudstone
- Kfmm Kfmsm Kfms₂ Kfms₁
Middle unit
Kfmm, mudstone
Kfmsm, interbedded sandstone and mudstone
Kfms₂, interbedded sandstone and siltstone
Kfms₁, prominent cliff-forming sandstone
- Kflss Kflst
Lower unit
Kflss, interbedded sandstone and siltstone
Kflst, siltstone
- Kifs₂ Kif
Fuson Member
Kifs₂, prominent cliff-forming channel sandstone
Kif, variegated mudstone and minor sandstone
- Klm
Minnewaste Limestone Member
- Kics₂ Kicsm₂ Kicsm₁
Chilson Member
Kics₂, prominent cliff-forming fine-grained channel sandstone
Kicsm₂, mudstone
Kicsm₁, interbedded sandstone and mudstone
- Jm
Morrison Formation
- Ju
Unkpapa Sandstone
- Jsr
Jsl
Jsh
Jssb
Jssc
Sundance Formation
*Jsr, Redwater Shale Member
Jsl, Lak Member
Jsh, Hulett Sandstone Member
Jssb, Stockade Beaver Shale Member
Jssc, Canyon Springs Sandstone Member*
- Tssu
Psm
Pal
Spearfish Formation
*Tssu, upper unit, brownish-red siltstone
Psm, middle unit, gypsum and siltstone
Pal, lower unit, brownish-red siltstone*
- Pmk
Minnekahta Limestone
- Po
Opeche Formation

- Contact
Dashed where approximately located; short dashed where indefinite or inferred
- Sandstone masses and dikes
- Silica cement
- Uranium deposit
- Structure contours
*Drawn on top of Chilson Member of Lakota Formation.
Dashed where approximately located; short dashed where reconstructed; interval 50 feet. Datum is mean sea level.*

Base by U.S. Geological Survey, 1950

SCALE 1:24 000

Geology by E. V. Post, D. W. Lane, and N. P. Cuppels, 1955-56, assisted by W. B. Bryan and C. L. Rogers



GEOLOGIC MAP OF THE CASCADE SPRINGS QUADRANGLE, FALL RIVER COUNTY, SOUTH DAKOTA