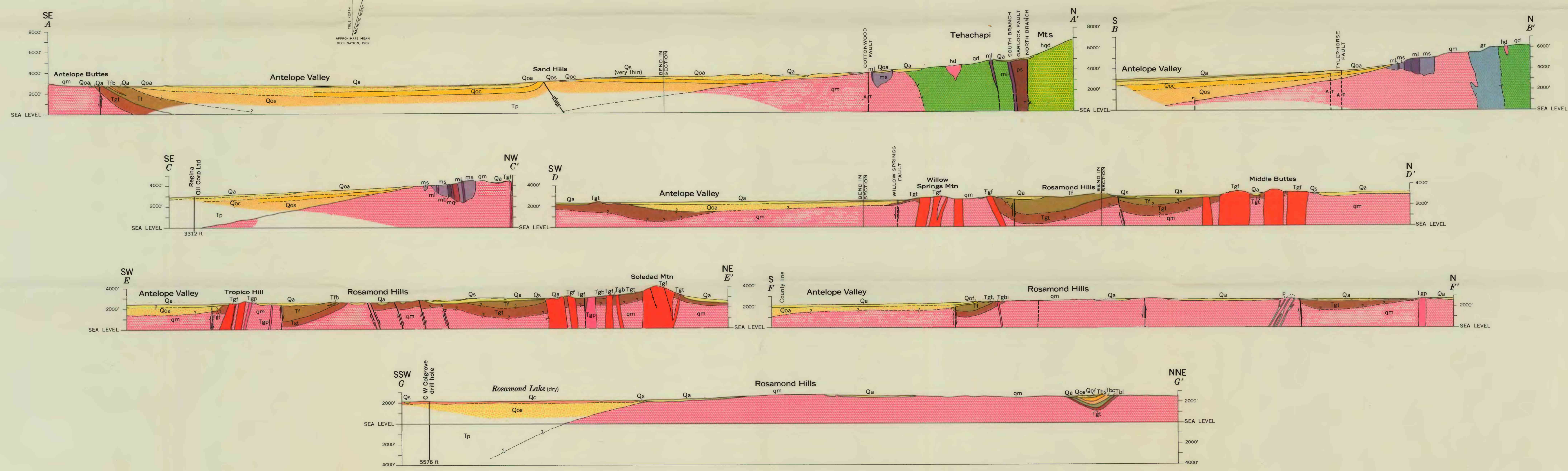


Base prepared under direction of Corps of Engineers, U.S. Army. Topography by Fairchild Aerial Surveys, Inc. by stereophotogrammetric process, 1943. Land ret from U.S. Geological Survey maps

Geology by T. W. Dibble, Jr., 1953



GEOLOGIC MAP AND SECTIONS OF THE WILLOW SPRINGS AND ROSAMOND QUADRANGLES, CALIFORNIA

