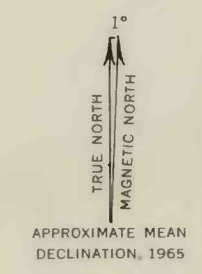
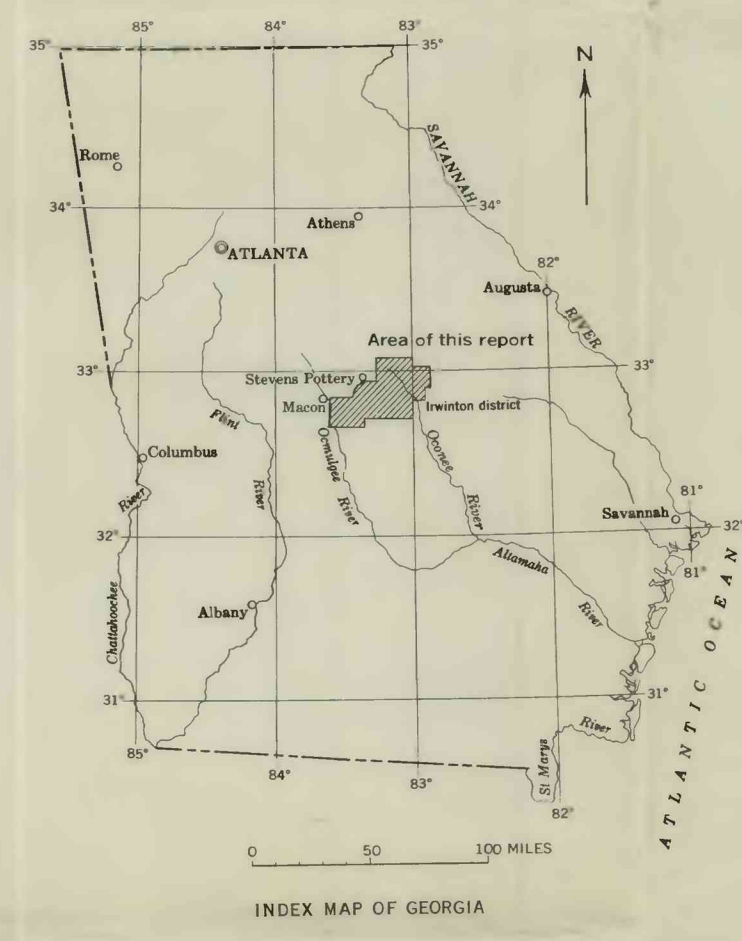


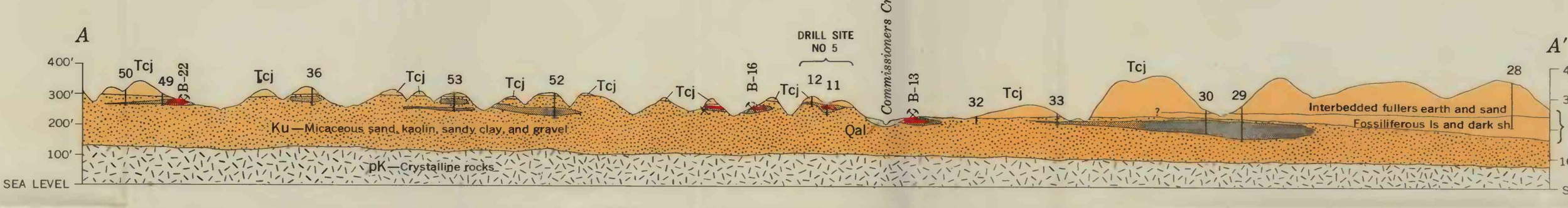
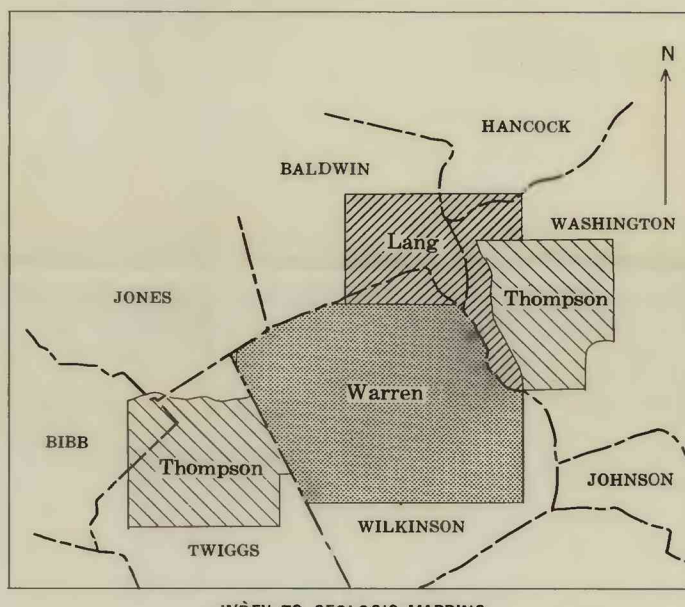
- EXPLANATION**
- Qal Alluvium
 - Tcj Claiborne and Jackson Groups
 - Ku Cretaceous undifferentiated
 - B Outcrop of bauxite
 - K Outcrop of kaolin
 - PK Outcrop of pisolitic kaolin comprising borders of probable Fluviocene deposition
 - Ba Bauxite float
 - Contact
 - Approximately located
 - H-NO 3 Open pit kaolin mine
 - G-NO 1 Boundary dashed where approximately located. Letter refers to mining company where known; if not known, K is used; number or mine is mine name. Location of mine as of 1952.
 - B-10 32 Open pit bauxite mine
 - Number refers to list of mines and prospects
 - 32 Back-filled mine
 - Mine dump
 - B-14 30 Bauxite prospect
 - Number refers to list of mines and prospects
 - 31 Drill hole, barren, showing hole number
 - 16 10 Drill hole penetrating bauxite and kaolin
 - Fraction gives thickness of bauxite plus kaolin (upper number) and depth to top of kaolin (lower number); not shown at drill sites 1-5
 - 51 32 Drill hole penetrating kaolin
 - Fraction gives thickness of kaolin (upper number) and depth to top of kaolin (lower number); not shown at drill sites 1-5
 - 3 Hand-super hole penetrating kaolin
 - Test pit
 - Altitude of Cretaceous-Eocene contact
 - Datum is mean sea level
 - Site of hole 900 feet deep drilled for oil
 - Sink hole in Eocene limestone
 - Bauxite, shown in section only
 - Kaolin, shown in section only



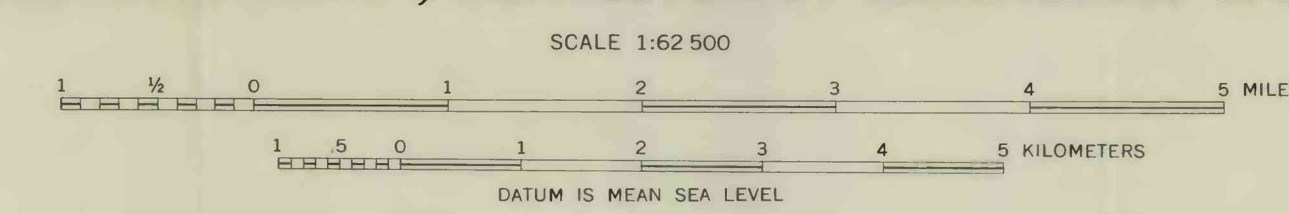
- LIST OF ABBREVIATIONS USED FOR NAMES OF MINING COMPANIES
- A, Mine of American Clay Co.
 - C, Mine of Champion Paper and Fibre Co.
 - E, Mine of E. Y. Mallery Georgia Coating Clay Co.
 - EB, Mine of Edgar Brothers Co.
 - G, Mine or plant of Georgia Kaolin Co.
 - GP, Mine of Georgia Pigment Co.
 - H, Mine of J. M. Huber (Saginaw) Corp.
 - S, Mine of Southern Clay, Inc.
 - T, Mine of T. D. Tharpe
 - TK, Mine of Thiel Kaolin Co.
 - U, Mine of United Clay Mines, Inc.



- LIST OF BAUXITE MINES AND PROSPECTS
- B-1 Bush mine
 - B-2 Hightower mine
 - B-3 Blum mine
 - B-4 Prospect pit
 - B-5 Fountain mine
 - B-6 Underwood mine
 - B-7 Washington mine
 - B-8 Dugess prospect
 - B-9 McNeal prospect
 - B-10 Columbia mine
 - B-11 Fitzpatrick mine
 - B-12 Freeman mine
 - B-13 Casson mine
 - B-14 Casson prospect
 - B-15 Prospect pit
 - B-16 Casson or Tombsboro mine
 - B-17 Old Dupont mine
 - B-18 Prospect pit
 - B-19 Shepherd mine
 - B-20 Nadine mine
 - B-21 Atkins mine
 - B-22 McIntyre or Parker-Honeycutt-Daniels mine
 - B-23 Prospect pit
 - B-24 Criswell prospect



GEOLOGIC MAP AND SECTION, IRWINTON BAUXITE DISTRICT, GEORGIA



Base compiled from aerial photographs and from U.S. Geological Survey topographic quadrangles: Irwinton, 1916 and Milledgeville, 1916.

Geology mapped by W. B. Ling, W. C. Warren, and R. M. Thompson, 1942-1943