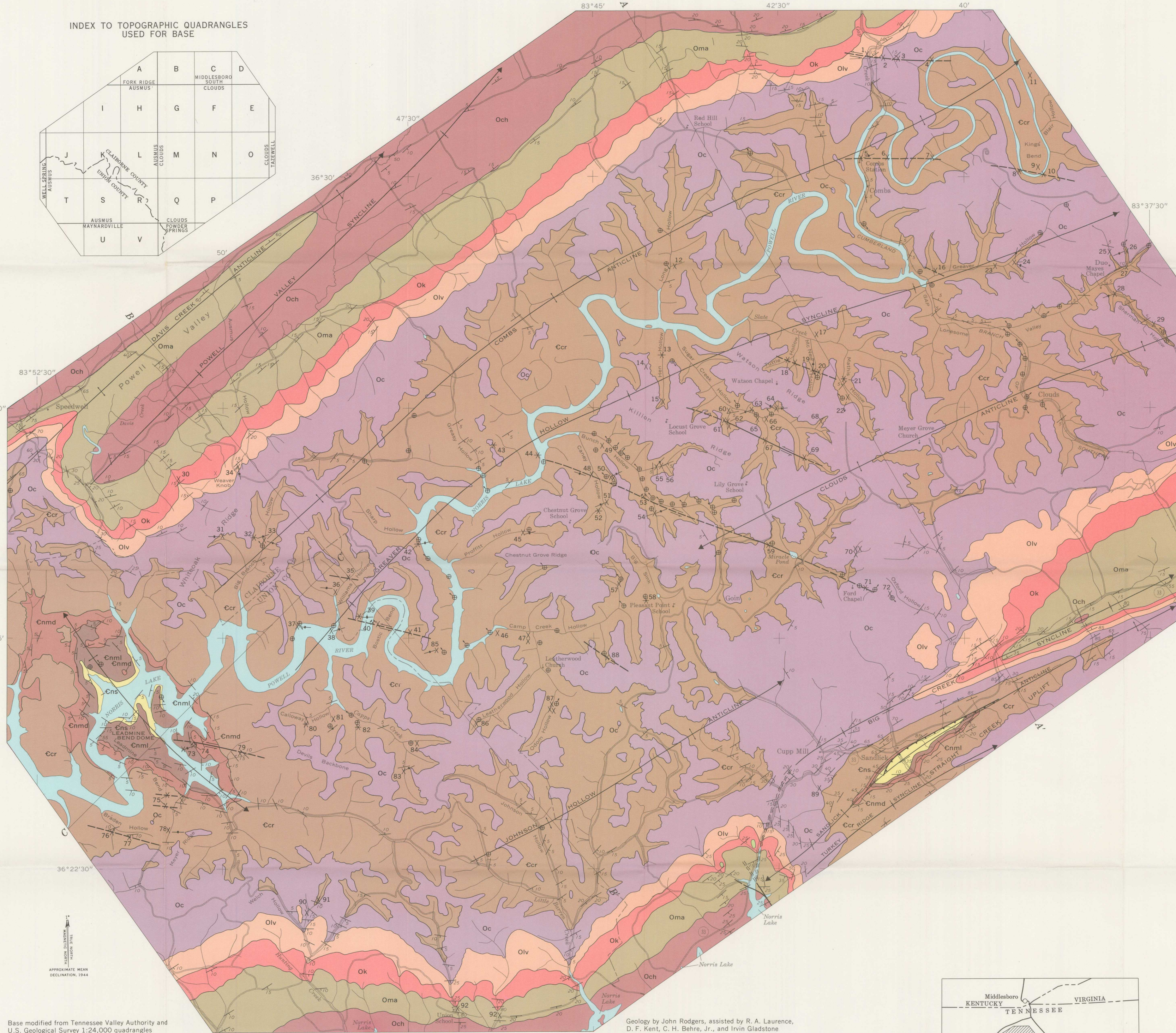
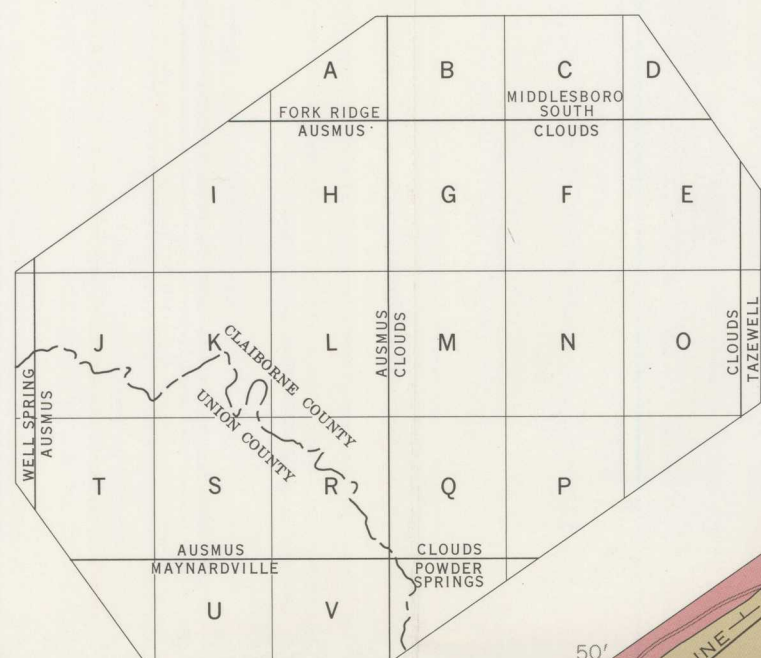


NUMERICAL LIST OF MINES, PROSPECTS, AND OCCURRENCES SHOWN ON GEOLOGIC MAP
(Reference letters are the large letters in the centers of the rectangles on the index map at right)

NUMBER ON MAP	NAME	REFERENCE LETTER
1	Gap Creek	C
2	Gardner	C
3	Minton	C
4	Gardner (on Powell River)	C
5	Combs Station	C
6	Gardner-TVA	C
7	Robert Bruce	C
8	Kings Bend (western)	D
9	Kings Bend (inside)	D
10	Kings Bend mine	D
11	Kings Bend (northern)	D
12	W. M. Russell	D
13	Shipley	G
14	S. J. Robinson	G
15	Matt Evans	G
16	Treese	F
17	Charles Lundy	F
18	L. F. Snyder (2 cuts)	F
19	Fred Smith	F
20	Tuttle	F
21	W. M. Duncan (northern)	F
22	W. J. Lynch	F
23	Cline	E
24	Logan	E
25	Ford	E
26	Ford-east	E
27	Due	E
28	Lindsay	E
29	Crutchfield	E
30	Wm. Medley and C. Leach	J
31	Charles Braden (western)	J
32	Charles Braden (eastern)	K
33	Ford (Big Branch Hollow)	K
34	J. D. Braden	K
35	Shofner (northeast)	K
36	Shofner (southwest)	K
37	Williams (eastern)	K
38	Williams (western)	K
39	S. Jones	K
40	Caldwell mine	K
41	Deane	K
42	Cawood	L
43	I. Smith (western)	L
44	I. Smith (eastern)	L
45	C. Proffitt	L
46	F. Carey	L
47	H. B. Johnson	L
48	Chad Wilson	L
49	Robert Welch	M
50	J. P. Welch	M
51	Shot Wilson	M
52	J. M. Hopper	M
53	Bunch Hollow	M
54	Honeyuck or Tinsucker	M
55	Fortner Branch (old)	M
56	Fortner Branch (new)	M
57	R. E. Johnson	M
58	Floyd Carey	M
59	B. C. Goin (Eli Goin)	M
60	Howard Lynch (northern)	M
61	J. F. Lynch	M
62	Howard Lynch (southern)	M
63	W. P. Day	M
64	F. M. Day	M
65	Fortner (northern)	M
66	Robert Keck	M
67	Fortner (southern)	M
68	W. M. Duncan (southern)	N
69	Ritchie (Lynch)	N
70	J. B. Ford (3 cuts)	N
71	Langford	N
72	W. P. Jones	N
73	Russell	T
74	New Prospect mine (Leadmine Bend)	T
75	Cox (3 cuts)	T
76	Braden (western)	T
77	Braden (eastern)	T
78	Beeler	T
79	Stiner	S
80	Bowen	S
81	Evans	S
82	Dees	S
83	J. W. Taylor	S
84	D. F. Tolliver South	R
85	J. D. Keck	R
86	Shofner-Weaver	R
87	Rupert Hopper	R
88	Odell	Q
89	Johnson	P
90	Rouse	U
91	Woods	U
92 (2)	H. M. Graves	V

INDEX TO TOPOGRAPHIC QUADRANGLES USED FOR BASE



EXPLANATION

ORDOVICIAN

- Och Chickamauga Limestone
- Oma Mascot Dolomite
- Ok Kingsport Limestone
- Olv Longview Dolomite
- Oc Chepalutepce Dolomite
- Ccr Copper Ridge Dolomite

CAMBRIAN

- Cnmd Maynardville Limestone Member, upper dolomite unit
- Cnml Maynardville Limestone Member, lower limestone unit
- Cns Nolichucky Shale

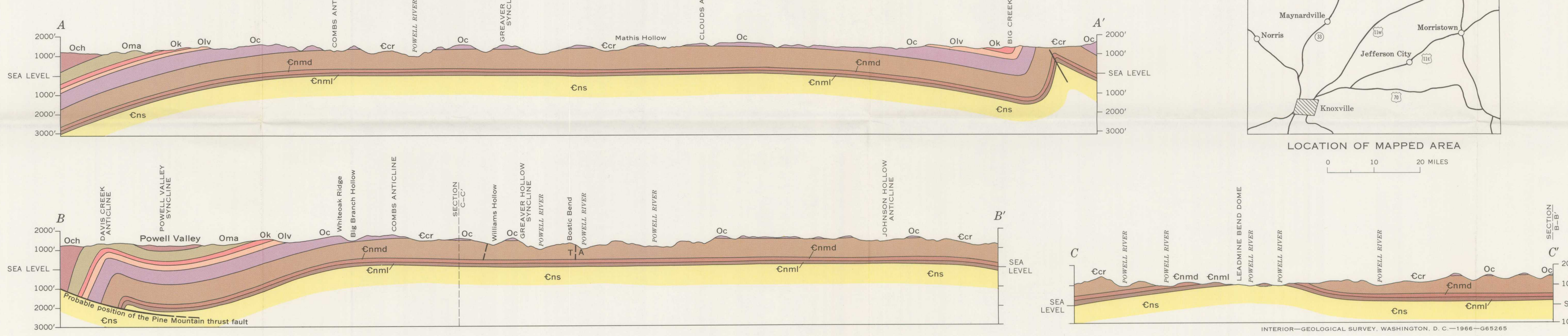
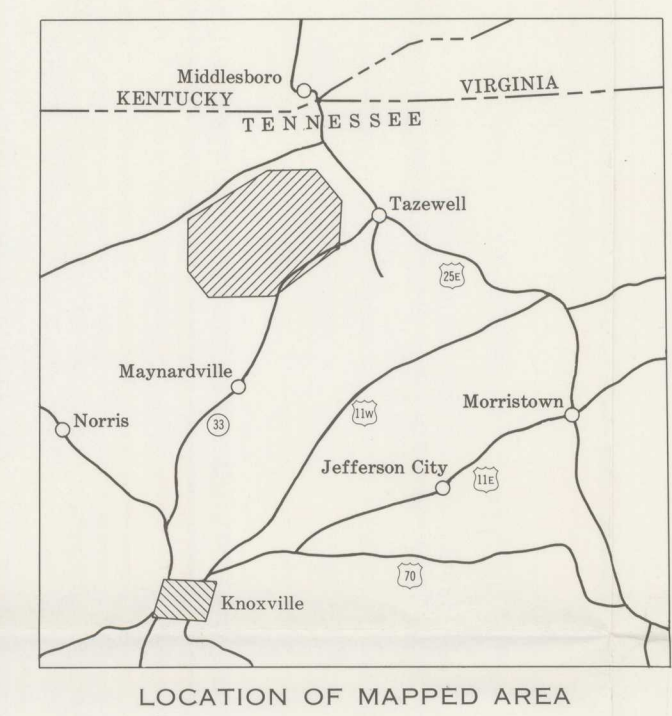
Geological Symbols:

- Thrust fault
- Tear fault
- Fault, showing lateral movement
- Axis of anticline, showing plunge
- Axis of syncline, showing plunge
- Strike and dip of beds
- Strike and dip of overturned beds
- Strike of vertical beds
- Horizontal beds
- Nearly horizontal beds
- Strike of vertical joint plane
- Mine
- Prospect
- Occurrence

Mineralization; no prospecting work has been done

Base modified from Tennessee Valley Authority and U.S. Geological Survey 1:24,000 quadrangles

Geology by John Rodgers, assisted by R. A. Laurence, D. F. Kent, C. H. Behre, Jr., and Irvin Gladstone



GEOLOGIC MAP AND SECTIONS OF THE POWELL RIVER AREA, CLAIBORNE AND UNION COUNTIES, TENNESSEE

