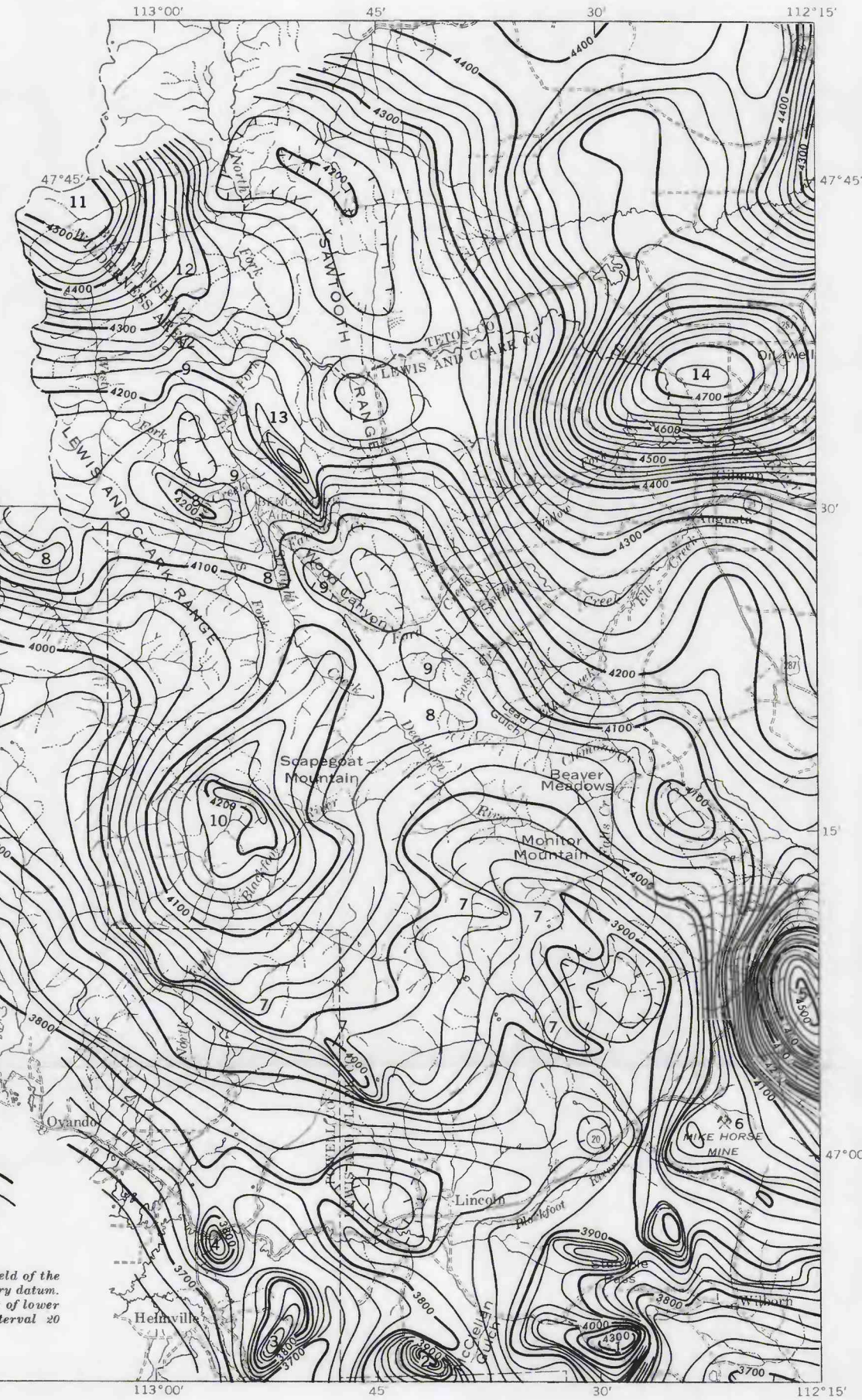
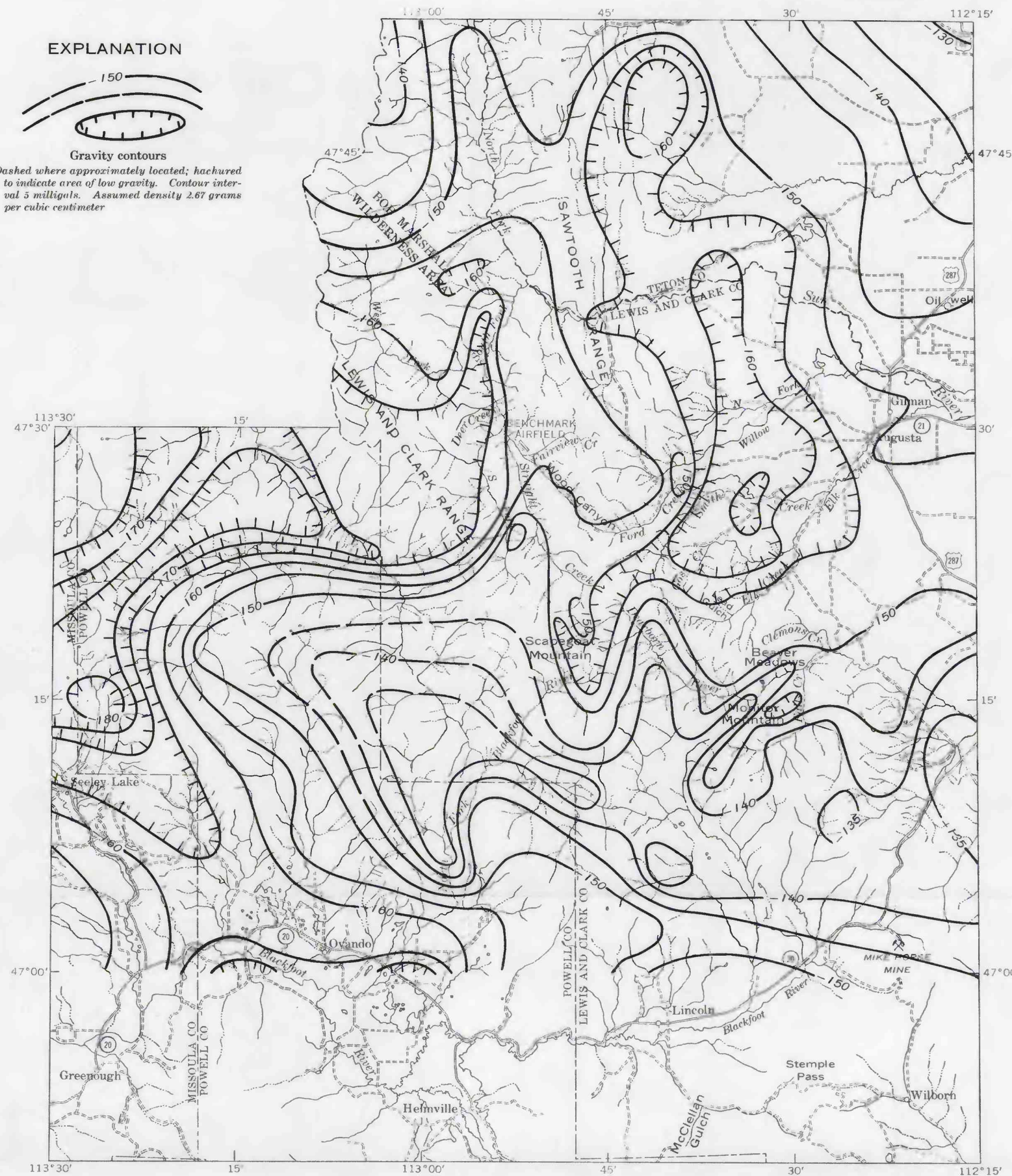
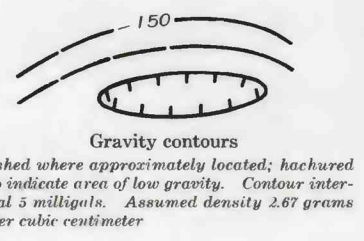


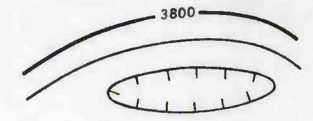
1. Exposed quartz monzonite stock at Granite Peak near Stemple Pass
2. Exposed quartz monzonite stock at head of McClellan Gulch
3. Exposed quartz monzonite stock
4. Dalton Mountain
5. Buried pluton
6. Mike Horse lead-zinc mine
7. Exposed Precambrian diorite sills
8. Exposed Precambrian diorite sills
9. South Fork thrust zone
10. Buried pluton
11. Buried pluton
12. South Fork thrust zone
13. Exposed sills of Late Cretaceous and early Tertiary age, piled by thrust faulting
14. Buried pluton in plains east of mountains



EXPLANATION



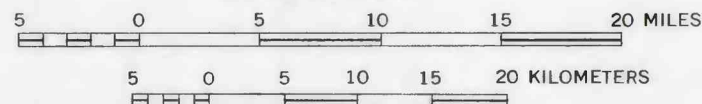
EXPLANATION



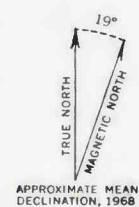
Base from U.S. Geological Survey
1:250,000; Choteau, 1954-62, and
Butte, 1958

Aeromagnetic contours compiled by Dean Kleinkopf, 1966

SCALE 1:500 000



Gravity data from 1381st Geodetic Survey squadron, Air
Photographic and Charting Service, U.S. Air Force.
Supplemented locally with additional stations by U.S.
Geological Survey



AEROMAGNETIC AND GRAVITY MAPS OF THE SOUTHEASTERN PART OF THE LEWIS AND CLARK RANGE, MONTANA