

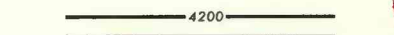



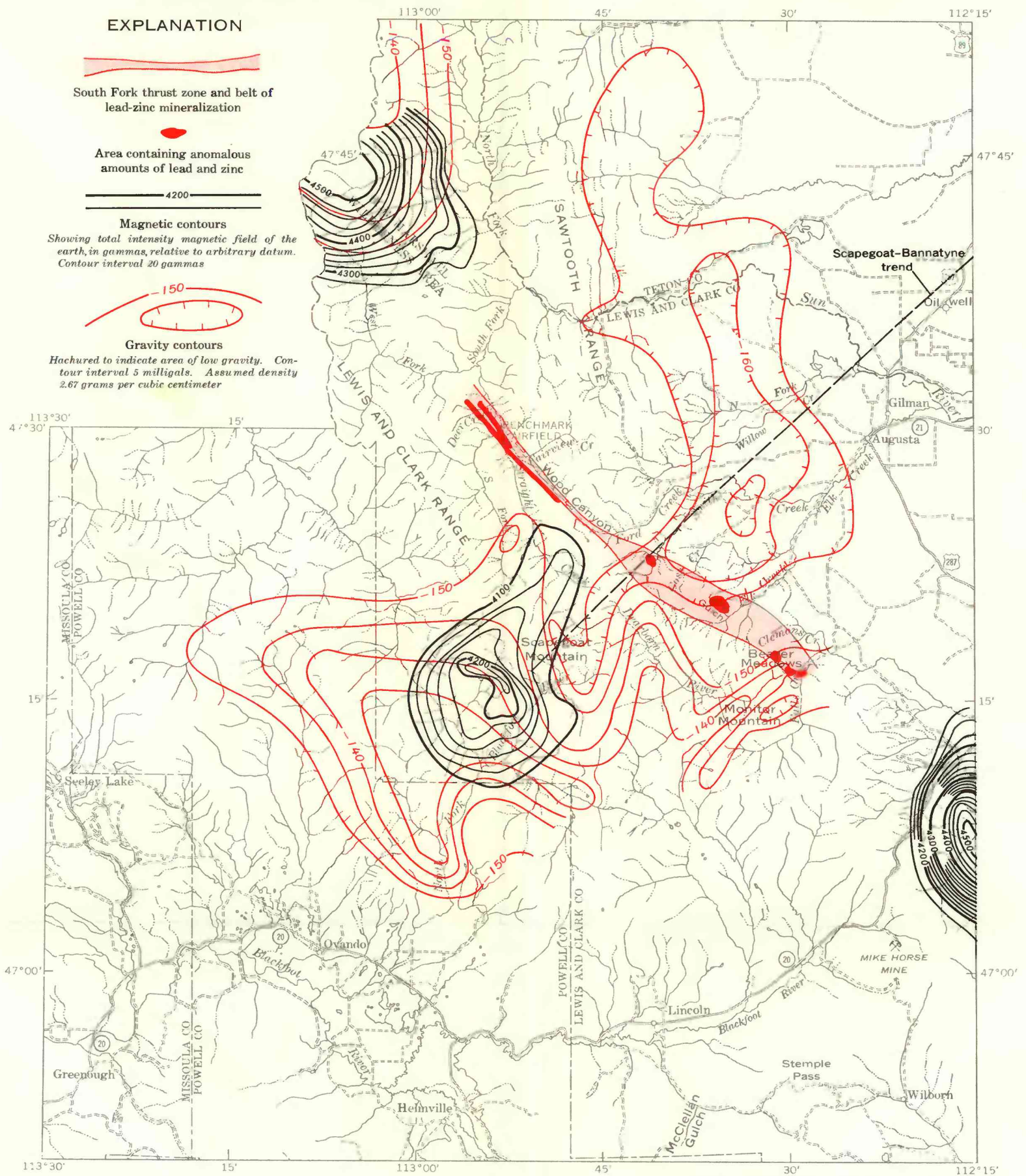
EXPLANATION


South Fork thrust zone and belt of lead-zinc mineralization


Area containing anomalous amounts of lead and zinc


Magnetic contours
Showing total intensity magnetic field of the earth, in gammas, relative to arbitrary datum. Contour interval 20 gammas


Gravity contours
Hachured to indicate area of low gravity. Contour interval 5 milligals. Assumed density 2.67 grams per cubic centimeter



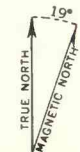
Base from U.S. Geological Survey
1:250,000; Choteau, 1954-62, and
Butte, 1958

INTERIOR—GEOLOGICAL SURVEY, WASHINGTON, D. C.—1968—G68141

SCALE 1:500 000

5 0 5 10 15 20 MILES

5 0 5 10 15 20 KILOMETERS



APPROXIMATE MEAN
DECLINATION, 1968

COMPOSITE MAP OF SOME GEOLOGIC, GEOPHYSICAL, AND
GEOCHEMICAL FEATURES IN THE SOUTHEASTERN
PART OF THE LEWIS RANGE, MONTANA