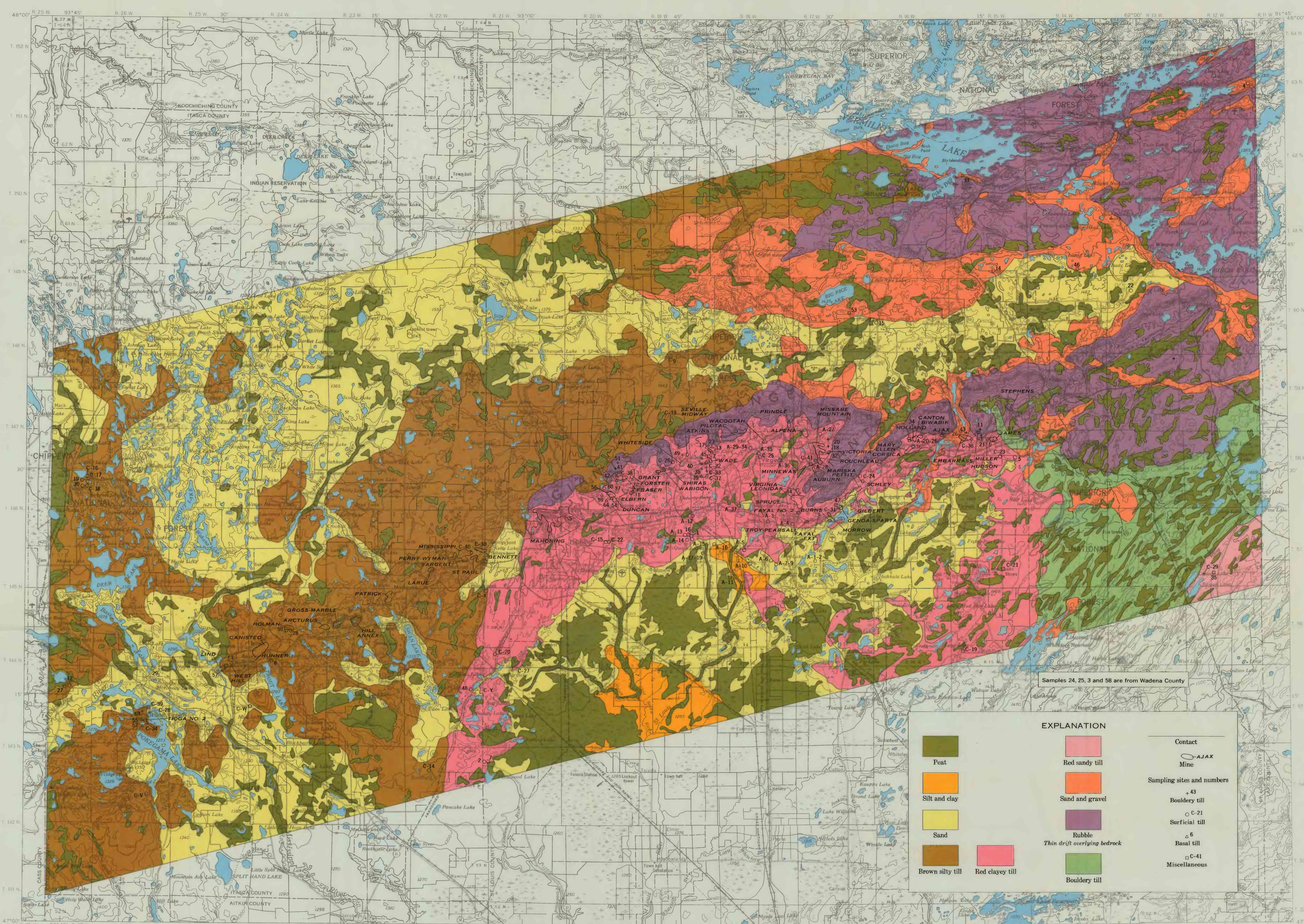


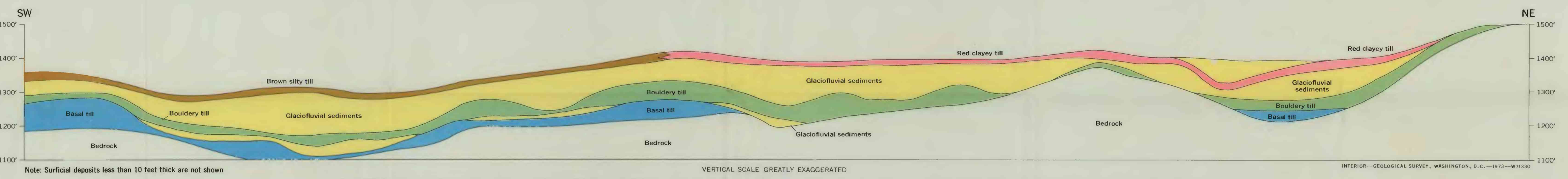
A. GEOMORPHIC FEATURES



B. SURFICIAL GEOLOGY

Base from U.S. Geological Survey, Hibbing and Two Harbors (1954)

Geology by R. D. Cotter, H. L. Young, and T. C. Winter



GENERALIZED SECTION SHOWING STRATIGRAPHIC RELATION OF GLACIAL DRIFT ALONG A LINE SOUTH OF GRAND RAPIDS AND AURORA

SCALE 1:250,000

CONTOUR INTERVAL 50 FEET
DATUM IS MEAN SEA LEVEL

1:250,000 SCALE FOR THIS SHEET TAKEN FROM 3:00" TABLETS FOR THE CENTER OF THE WEST EDGE TO 3:00" FOR THE CENTER OF THE EAST EDGE. MEAN ANNUAL CHANGE IS 0.0002" WESTERLY