

DESCRIPTION OF MAP UNITS

Q Unconsolidated sedimentary deposits (Quaternary units)

TERTIARY BASSIN ROCKS

Tm Tertiary volcanic rocks (Miocene)

Tc Challis Volcanic Group (Eocene)

Tl Tertiary rocks (Eocene) - including granitic, dyke, and pyroclastic rocks, and gneiss

CRETACEOUS INTERMEDIATE BASALTS

Kgl Bristle granite

Kgh Bristle granite - includes Bristle granite north of the

PLEISTOCENE SEDIMENTARY ROCKS

See Valley Group Lower Pleistocene (Type and Middle Pleistocene)

P4f Good Hope Formation, member 4 (Lower Pleistocene)

P3f Good Hope Formation, member 3 (Lower Pleistocene)

P2f Good Hope Formation, member 2 (Lower Pleistocene)

P1f Good Hope Formation, member 1 (Middle Pleistocene)

P1a Middle Pleistocene, upper member (Lower Pleistocene)

P1b Middle Pleistocene, middle member (Lower Pleistocene)

P1c Middle Pleistocene, lower member (Lower Pleistocene)

P1d Middle Pleistocene, lower member (Lower Pleistocene)

P1e Middle Pleistocene, lower member (Lower Pleistocene)

P1f Middle Pleistocene, lower member (Lower Pleistocene)

P1g Middle Pleistocene, lower member (Lower Pleistocene)

P1h Middle Pleistocene, lower member (Lower Pleistocene)

P1i Middle Pleistocene, lower member (Lower Pleistocene)

P1j Middle Pleistocene, lower member (Lower Pleistocene)

P1k Middle Pleistocene, lower member (Lower Pleistocene)

P1l Middle Pleistocene, lower member (Lower Pleistocene)

P1m Middle Pleistocene, lower member (Lower Pleistocene)

P1n Middle Pleistocene, lower member (Lower Pleistocene)

P1o Middle Pleistocene, lower member (Lower Pleistocene)

P1p Middle Pleistocene, lower member (Lower Pleistocene)

P1q Middle Pleistocene, lower member (Lower Pleistocene)

P1r Middle Pleistocene, lower member (Lower Pleistocene)

P1s Middle Pleistocene, lower member (Lower Pleistocene)

P1t Middle Pleistocene, lower member (Lower Pleistocene)

P1u Middle Pleistocene, lower member (Lower Pleistocene)

P1v Middle Pleistocene, lower member (Lower Pleistocene)

P1w Middle Pleistocene, lower member (Lower Pleistocene)

P1x Middle Pleistocene, lower member (Lower Pleistocene)

P1y Middle Pleistocene, lower member (Lower Pleistocene)

P1z Middle Pleistocene, lower member (Lower Pleistocene)

P1aa Middle Pleistocene, lower member (Lower Pleistocene)

P1ab Middle Pleistocene, lower member (Lower Pleistocene)

P1ac Middle Pleistocene, lower member (Lower Pleistocene)

P1ad Middle Pleistocene, lower member (Lower Pleistocene)

P1ae Middle Pleistocene, lower member (Lower Pleistocene)

P1af Middle Pleistocene, lower member (Lower Pleistocene)

P1ag Middle Pleistocene, lower member (Lower Pleistocene)

P1ah Middle Pleistocene, lower member (Lower Pleistocene)

P1ai Middle Pleistocene, lower member (Lower Pleistocene)

P1aj Middle Pleistocene, lower member (Lower Pleistocene)

P1ak Middle Pleistocene, lower member (Lower Pleistocene)

P1al Middle Pleistocene, lower member (Lower Pleistocene)

P1am Middle Pleistocene, lower member (Lower Pleistocene)

P1an Middle Pleistocene, lower member (Lower Pleistocene)

P1ao Middle Pleistocene, lower member (Lower Pleistocene)

P1ap Middle Pleistocene, lower member (Lower Pleistocene)

P1aq Middle Pleistocene, lower member (Lower Pleistocene)

P1ar Middle Pleistocene, lower member (Lower Pleistocene)

P1as Middle Pleistocene, lower member (Lower Pleistocene)

P1at Middle Pleistocene, lower member (Lower Pleistocene)

P1au Middle Pleistocene, lower member (Lower Pleistocene)

P1av Middle Pleistocene, lower member (Lower Pleistocene)

P1aw Middle Pleistocene, lower member (Lower Pleistocene)

P1ax Middle Pleistocene, lower member (Lower Pleistocene)

P1ay Middle Pleistocene, lower member (Lower Pleistocene)

P1az Middle Pleistocene, lower member (Lower Pleistocene)

P1aa Middle Pleistocene, lower member (Lower Pleistocene)

P1ab Middle Pleistocene, lower member (Lower Pleistocene)

P1ac Middle Pleistocene, lower member (Lower Pleistocene)

P1ad Middle Pleistocene, lower member (Lower Pleistocene)

P1ae Middle Pleistocene, lower member (Lower Pleistocene)

P1af Middle Pleistocene, lower member (Lower Pleistocene)

P1ag Middle Pleistocene, lower member (Lower Pleistocene)

P1ah Middle Pleistocene, lower member (Lower Pleistocene)

P1ai Middle Pleistocene, lower member (Lower Pleistocene)

P1aj Middle Pleistocene, lower member (Lower Pleistocene)

P1ak Middle Pleistocene, lower member (Lower Pleistocene)

P1al Middle Pleistocene, lower member (Lower Pleistocene)

P1am Middle Pleistocene, lower member (Lower Pleistocene)

P1an Middle Pleistocene, lower member (Lower Pleistocene)

P1ao Middle Pleistocene, lower member (Lower Pleistocene)

P1ap Middle Pleistocene, lower member (Lower Pleistocene)

P1aq Middle Pleistocene, lower member (Lower Pleistocene)

P1ar Middle Pleistocene, lower member (Lower Pleistocene)

P1as Middle Pleistocene, lower member (Lower Pleistocene)

P1at Middle Pleistocene, lower member (Lower Pleistocene)

P1au Middle Pleistocene, lower member (Lower Pleistocene)

P1av Middle Pleistocene, lower member (Lower Pleistocene)

P1aw Middle Pleistocene, lower member (Lower Pleistocene)

P1ax Middle Pleistocene, lower member (Lower Pleistocene)

P1ay Middle Pleistocene, lower member (Lower Pleistocene)

P1az Middle Pleistocene, lower member (Lower Pleistocene)

P1aa Middle Pleistocene, lower member (Lower Pleistocene)

P1ab Middle Pleistocene, lower member (Lower Pleistocene)

Contour - Dashed when approximately located

Stratigraphic - Dashed when approximately located

Low-angle dip-slip fault - Dashed when approximately located

Normal fault - Dashed when approximately located

Low-angle dip-slip fault - Dashed when approximately located

Normal fault - Dashed when approximately located

High-angle dip-slip fault - Dashed when approximately located

Normal fault - Dashed when approximately located

High-angle dip-slip fault - Dashed when approximately located

Normal fault - Dashed when approximately located

High-angle dip-slip fault - Dashed when approximately located

Normal fault - Dashed when approximately located

High-angle dip-slip fault - Dashed when approximately located

Normal fault - Dashed when approximately located

High-angle dip-slip fault - Dashed when approximately located

Normal fault - Dashed when approximately located

High-angle dip-slip fault - Dashed when approximately located

Normal fault - Dashed when approximately located

High-angle dip-slip fault - Dashed when approximately located

Normal fault - Dashed when approximately located

High-angle dip-slip fault - Dashed when approximately located

Normal fault - Dashed when approximately located

High-angle dip-slip fault - Dashed when approximately located

Normal fault - Dashed when approximately located

High-angle dip-slip fault - Dashed when approximately located

Normal fault - Dashed when approximately located

High-angle dip-slip fault - Dashed when approximately located

Normal fault - Dashed when approximately located

High-angle dip-slip fault - Dashed when approximately located

Normal fault - Dashed when approximately located

High-angle dip-slip fault - Dashed when approximately located

Normal fault - Dashed when approximately located

High-angle dip-slip fault - Dashed when approximately located

Normal fault - Dashed when approximately located

High-angle dip-slip fault - Dashed when approximately located

Normal fault - Dashed when approximately located

High-angle dip-slip fault - Dashed when approximately located

Normal fault - Dashed when approximately located

High-angle dip-slip fault - Dashed when approximately located

Normal fault - Dashed when approximately located

High-angle dip-slip fault - Dashed when approximately located

Normal fault - Dashed when approximately located

High-angle dip-slip fault - Dashed when approximately located

Normal fault - Dashed when approximately located

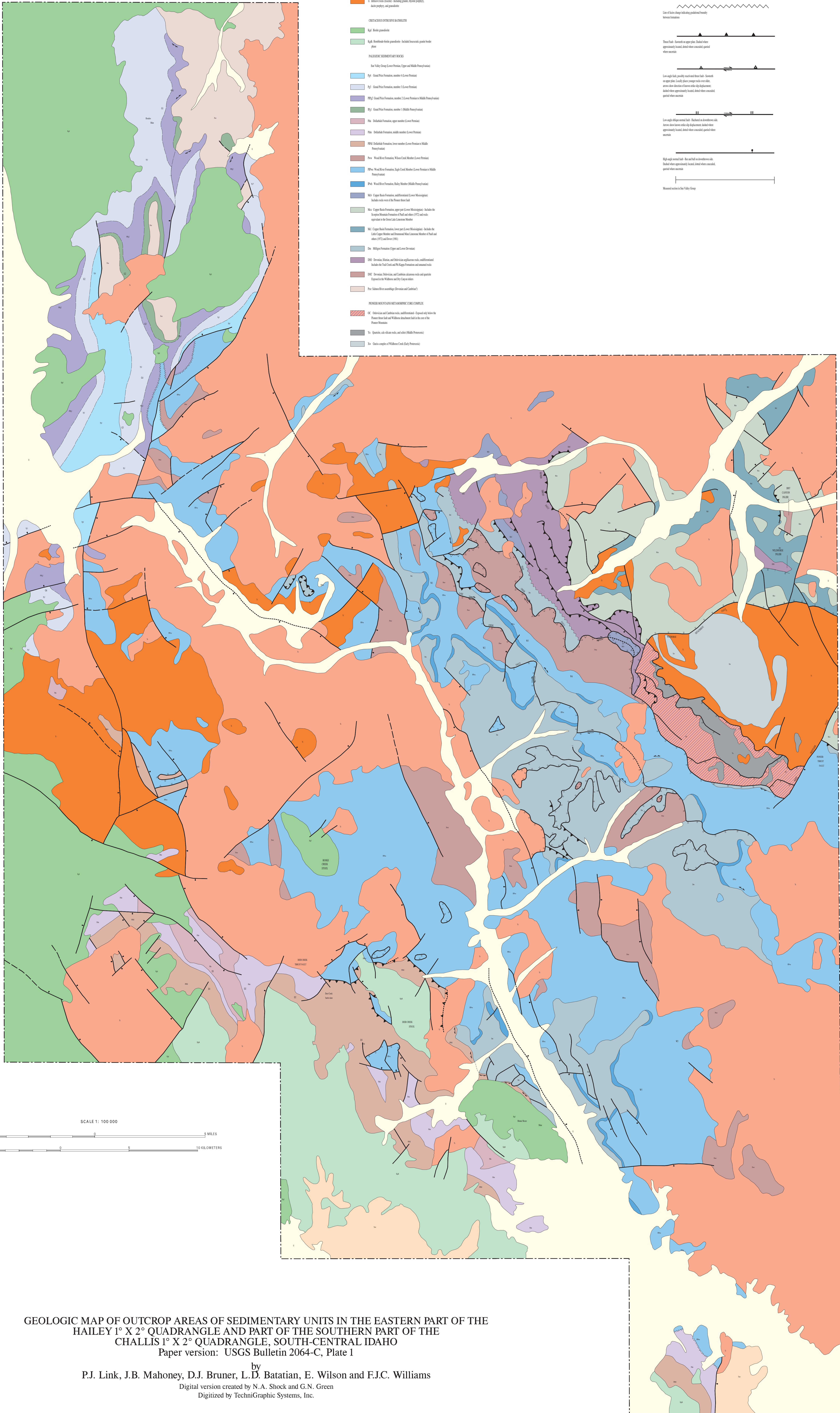
High-angle dip-slip fault - Dashed when approximately located

Normal fault - Dashed when approximately located

High-angle dip-slip fault - Dashed when approximately located

Normal fault - Dashed when approximately located

High-angle dip-slip fault - Dashed when approximately located



SCALE 1: 100 000
0 5 10 MILES
0 5 10 KILOMETERS

GEOLOGIC MAP OF OUTCROP AREAS OF SEDIMENTARY UNITS IN THE EASTERN PART OF THE HAILEY 1° X 2° QUADRANGLE AND PART OF THE SOUTHERN PART OF THE CHALLIS 1° X 2° QUADRANGLE, SOUTH-CENTRAL IDAHO
Paper version: USGS Bulletin 2064-C, Plate 1

by
P.J. Link, J.B. Mahoney, D.J. Bruner, L.D. Batatian, E. Wilson and F.J.C. Williams
Digital version created by N.A. Shock and G.N. Green
Digitized by TechniGraphic Systems, Inc.

