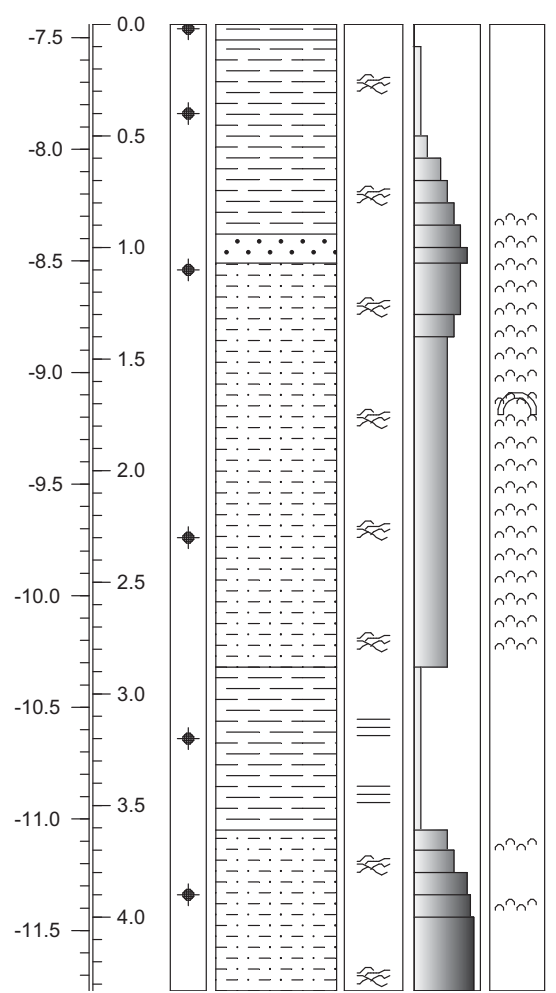


Elevation (m Water Depth)  
 Depth in Core Barrel (m)  
 Sample Depth  
 Lithology  
 Bedding & Deformation  
 % Sand Content  
 Features

# CORE ID: 10CCT05-09

**LOCATION:** Mississippi Sound, North of Eastern Extent of Horn Is.  
**LATITUDE:** 30.23364      **LONGITUDE:** -88.59497  
**DATE CORED:** 08/14/2010      **WATER DEPTH (m):** 7.44  
**CORE LENGTH (m):** 4.33



0 - 0.07 m: MUD, dark gray, soft, organic poor mud

0.07 - 0.94 m: MUD, olive-gray, soft, organic poor mud, with clean, olive-gray, muddy sand filled lenses, sand lenses increase in size and frequency down core becoming thin horizons, shell content is minimal from 0 to 0.60 m, then increases steadily from 0.60 to 0.94 m

0.94 - 1.07 m: SAND, clean, light brown, moderately-sorted, medium-grained quartz sand, with olive-gray, muddy sand clasts, low shell content

1.07 - 2.88 m: MUDDY SAND, olive-gray, highly shelly, muddy sand, shell content consists of fragmented and intact bivalves and gastropods, bedding is completely mottled from bioturbation

2.88 - 3.61 m: CLAY, olive-gray, dense, horizontally laminated clay, with occasional clean sand lenses at top, which decrease in size and frequency down core, becoming very thin sand horizons, very little shell content

3.61 - 4.33 m: MUDDY SAND, olive-gray grading into light grayish-brown muddy sand, moderate disseminated shell hash

