

**Appendix 1—
Induction Calibration Information**

Blank Page

3/28/2005 0830

Calibration Settings [X]

Cond. | Gamma

First Point

Reference mS/m

Value cps

Second Point

Reference mS/m

Value cps

Channel Calibration Factors

Cond.(mS/m) = x Cond.(cps) +

3/28/2005 1145

Calibration Settings [X]

Cond. | Gamma

First Point

Reference mS/m

Value cps

Second Point

Reference mS/m

Value cps

Channel Calibration Factors

Cond.(mS/m) = x Cond.(cps) +

10 Induction Conductivity and Natural Gamma Logs, Camp Stanley Storage Activity, Bexar County, Texas

3/29/2005 0900

Calibration Settings [X]

Cond. | Gamma

First Point

Reference mS/m

Value cps

Second Point

Reference mS/m

Value cps

Channel Calibration Factors

Cond.(mS/m) = x Cond.(cps) +

3/29/2005 1300

Calibration Settings [X]

Cond. | Gamma

First Point

Reference mS/m

Value cps

Second Point

Reference mS/m

Value cps

Channel Calibration Factors

Cond.(mS/m) = x Cond.(cps) +

3/30/2005 0900

Calibration Settings ✕

Cond. | **Gamma**

First Point

Reference mS/m

Value cps

Second Point

Reference mS/m

Value cps

Channel Calibration Factors

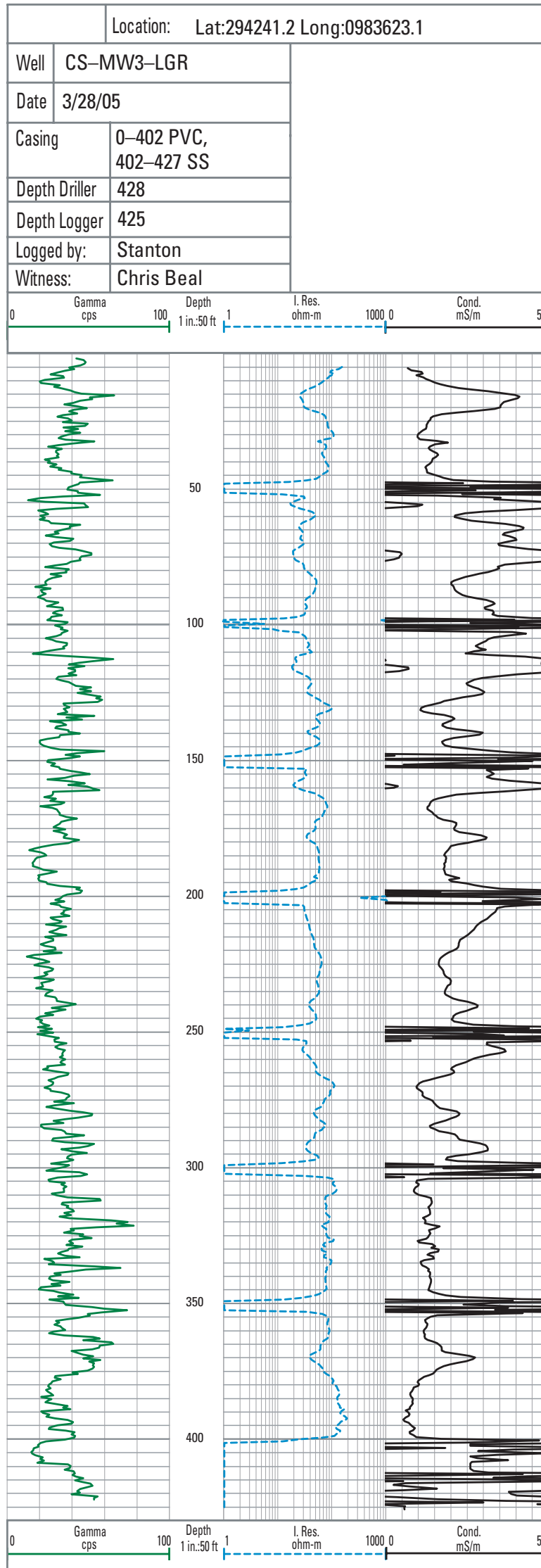
Cond.(mS/m) = x Cond.(cps) +

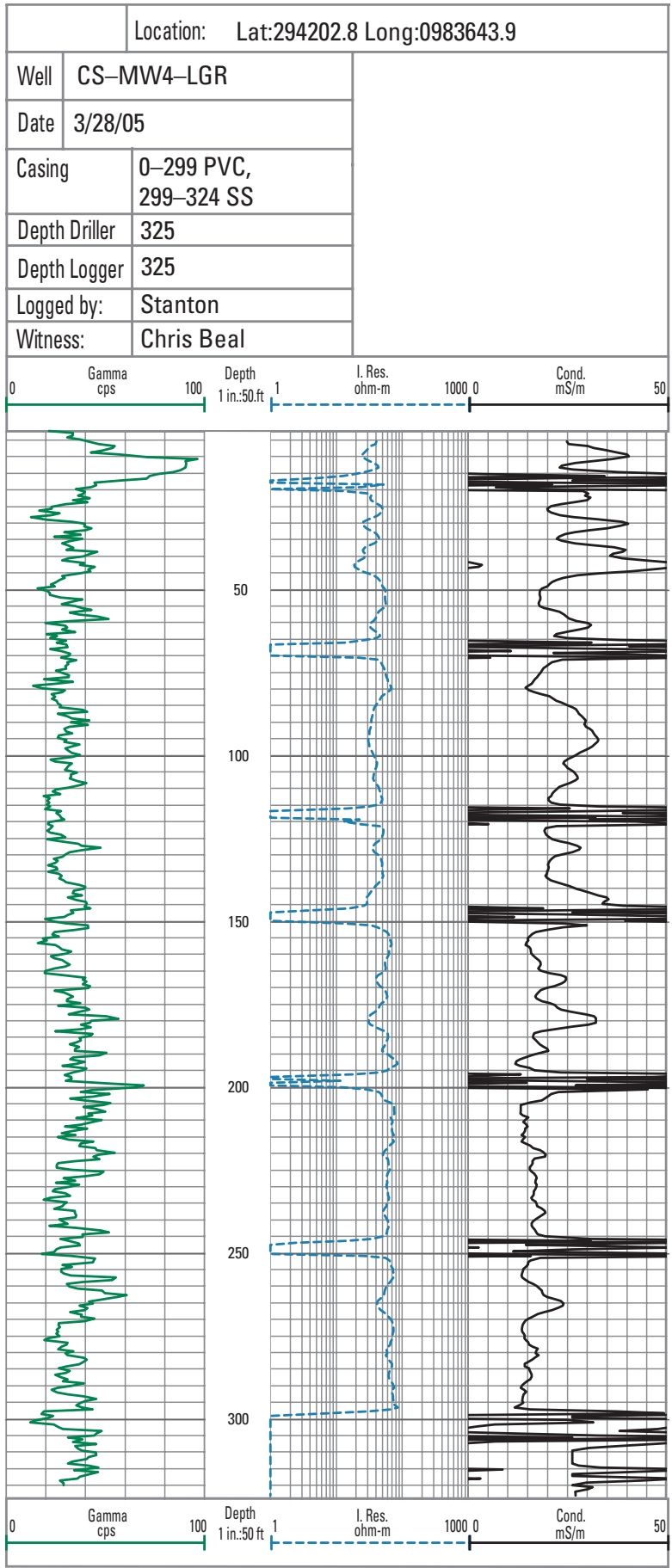
Blank Page

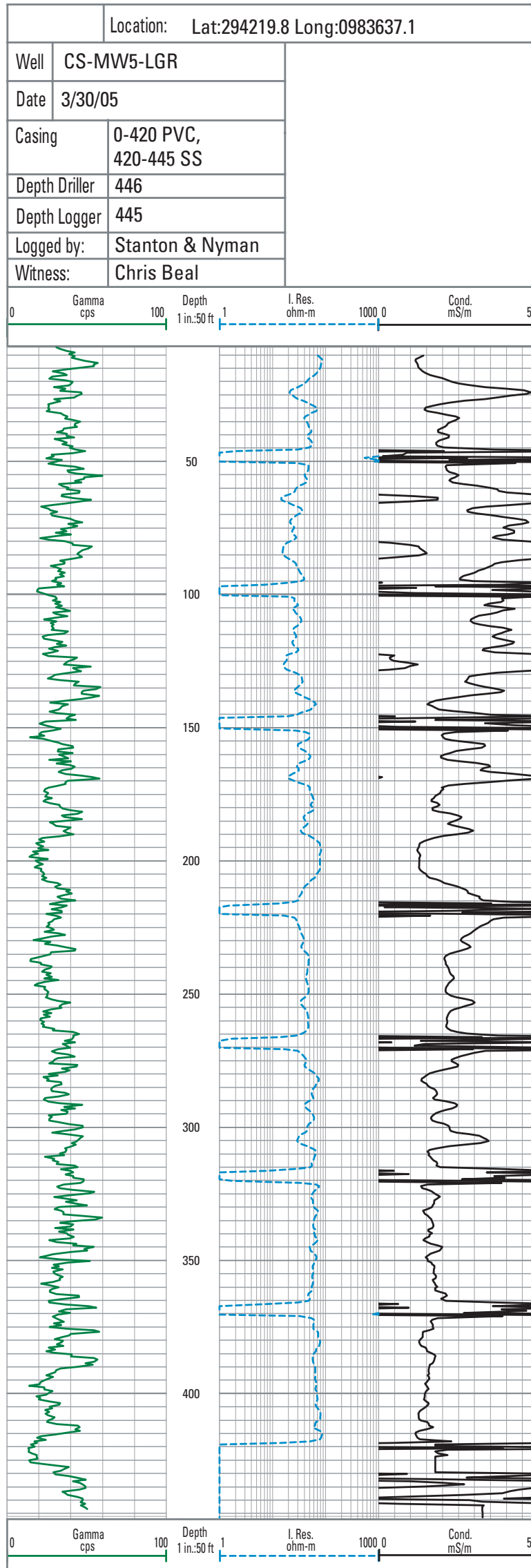
Appendix 2— Borehole Geophysical Logs

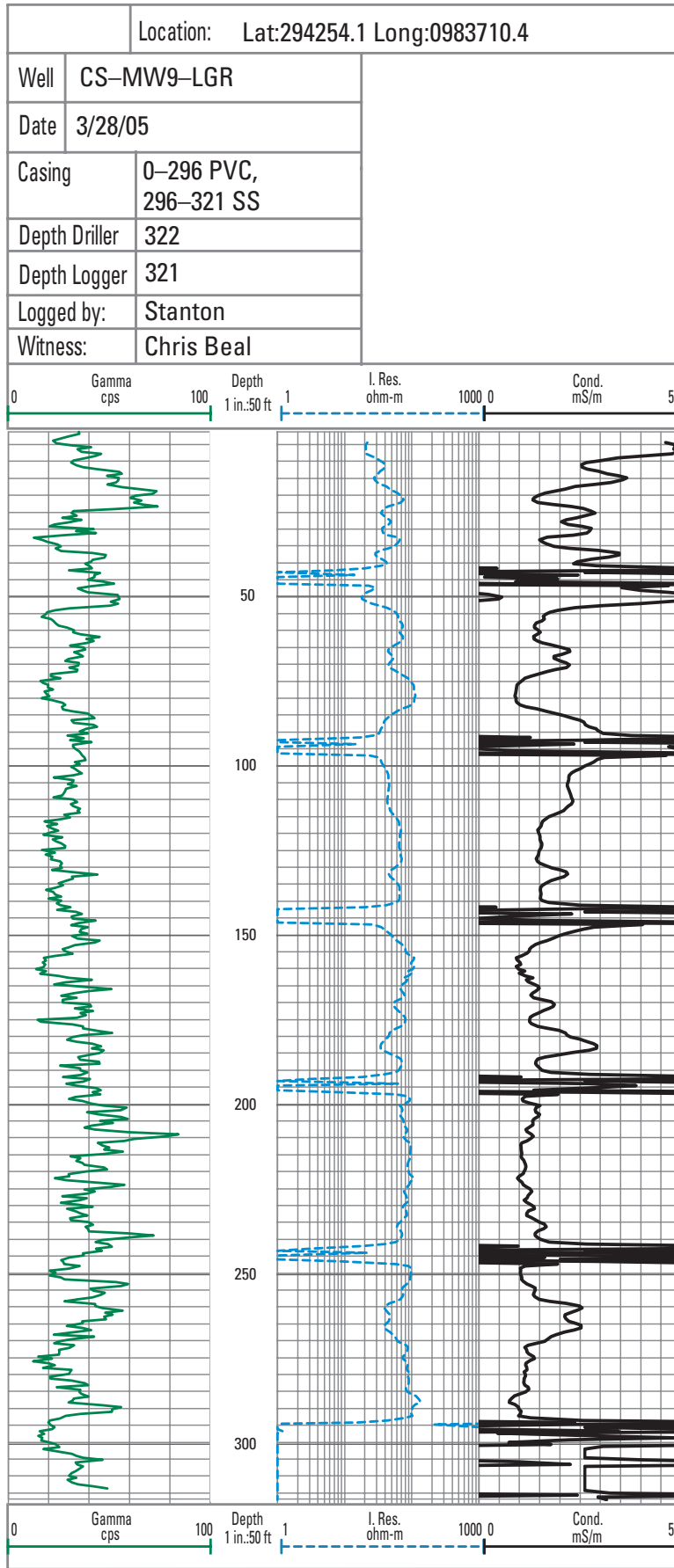
[PVC, polyvinyl chloride; SS, stainless steel; cps, counts per second; in., inch; ft, feet; ohm-m, ohm-meters; mS/m, millisiemens per meter]

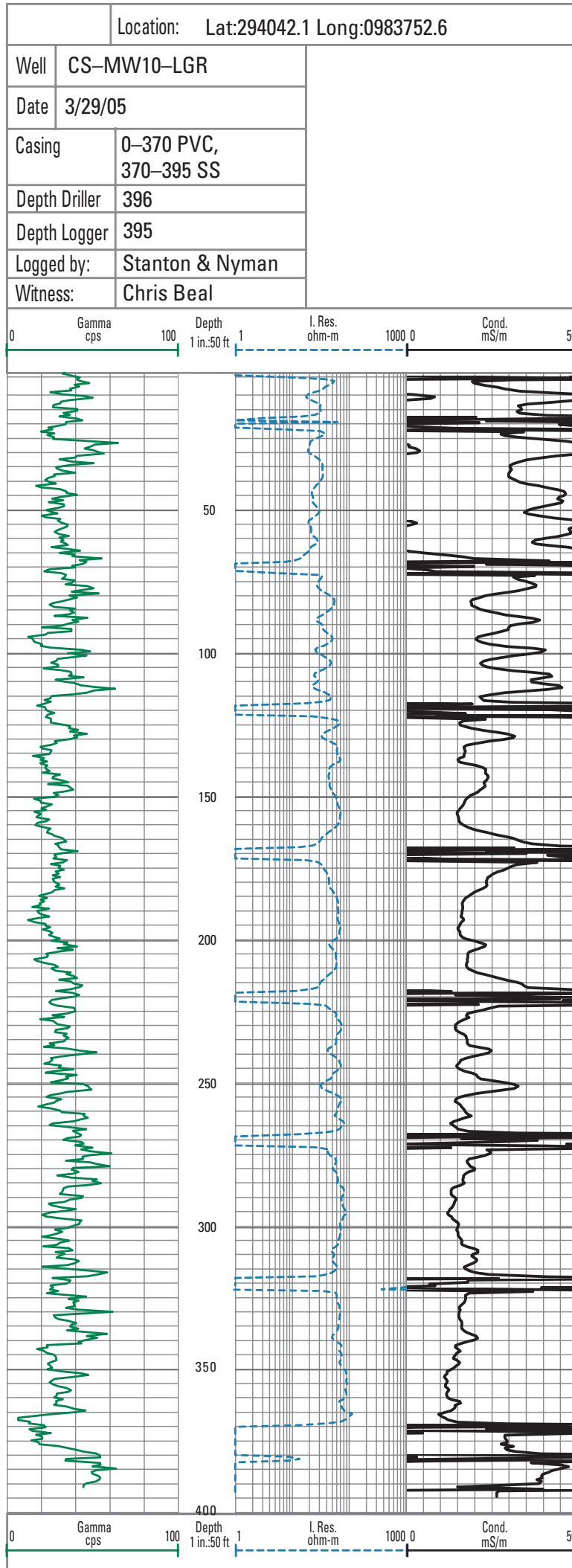
Blank Page

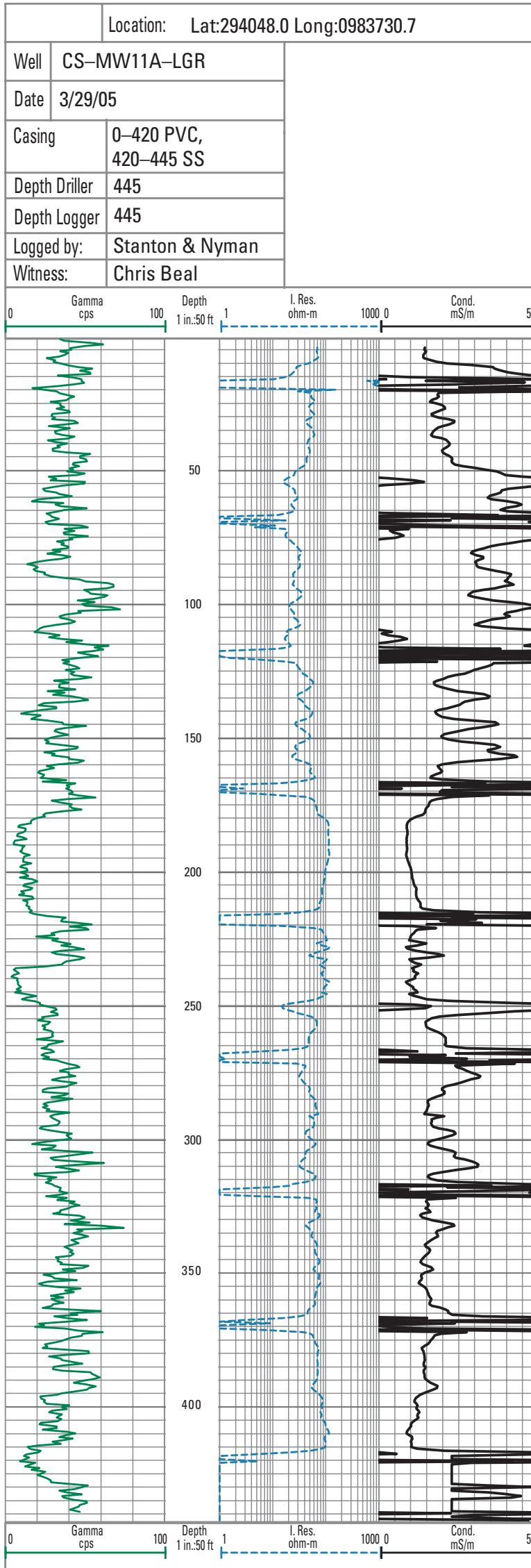


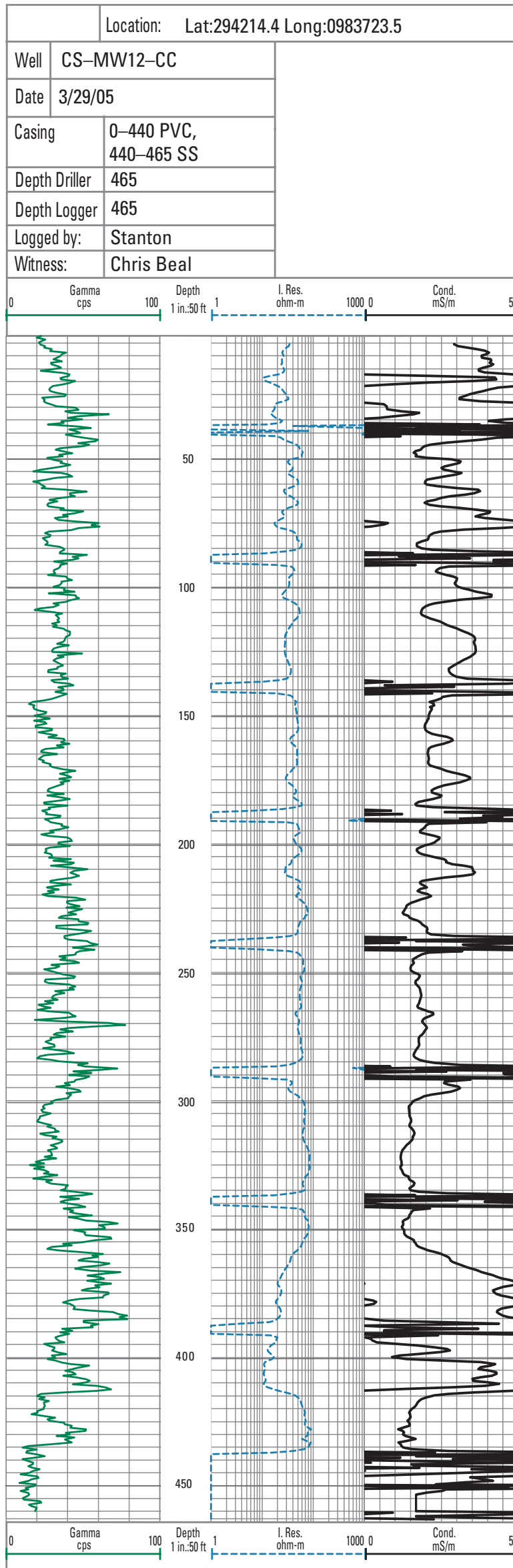


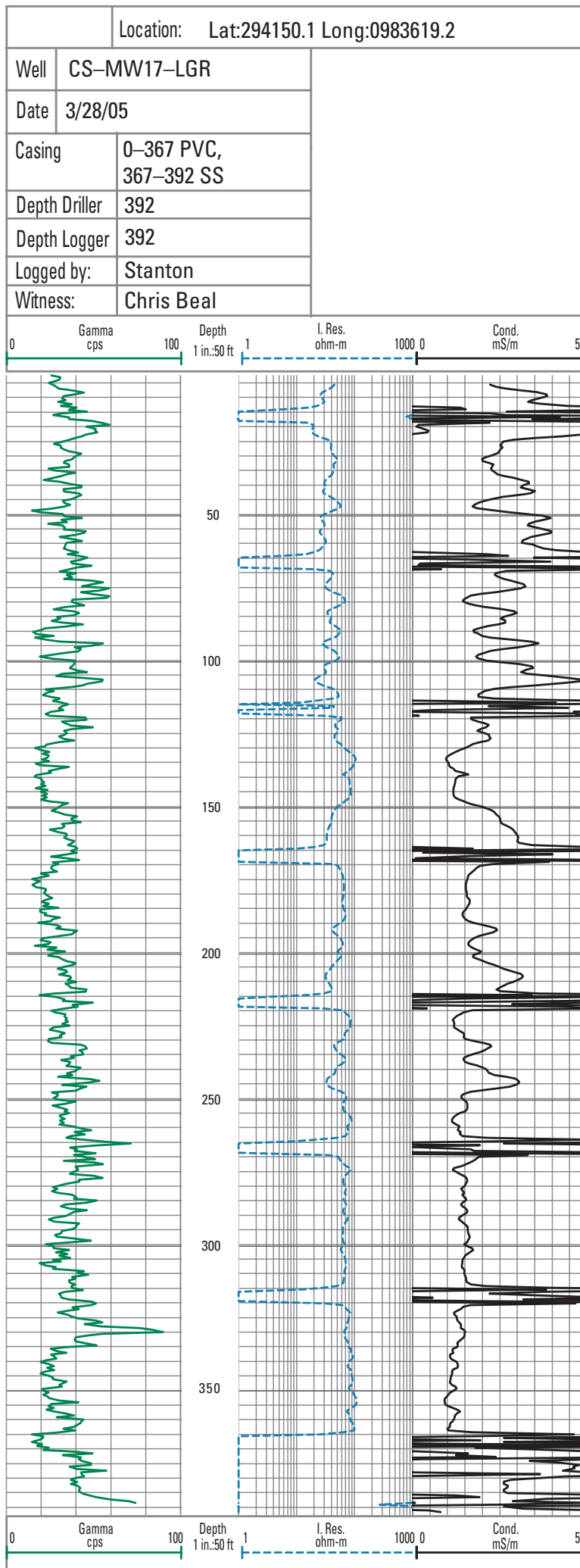


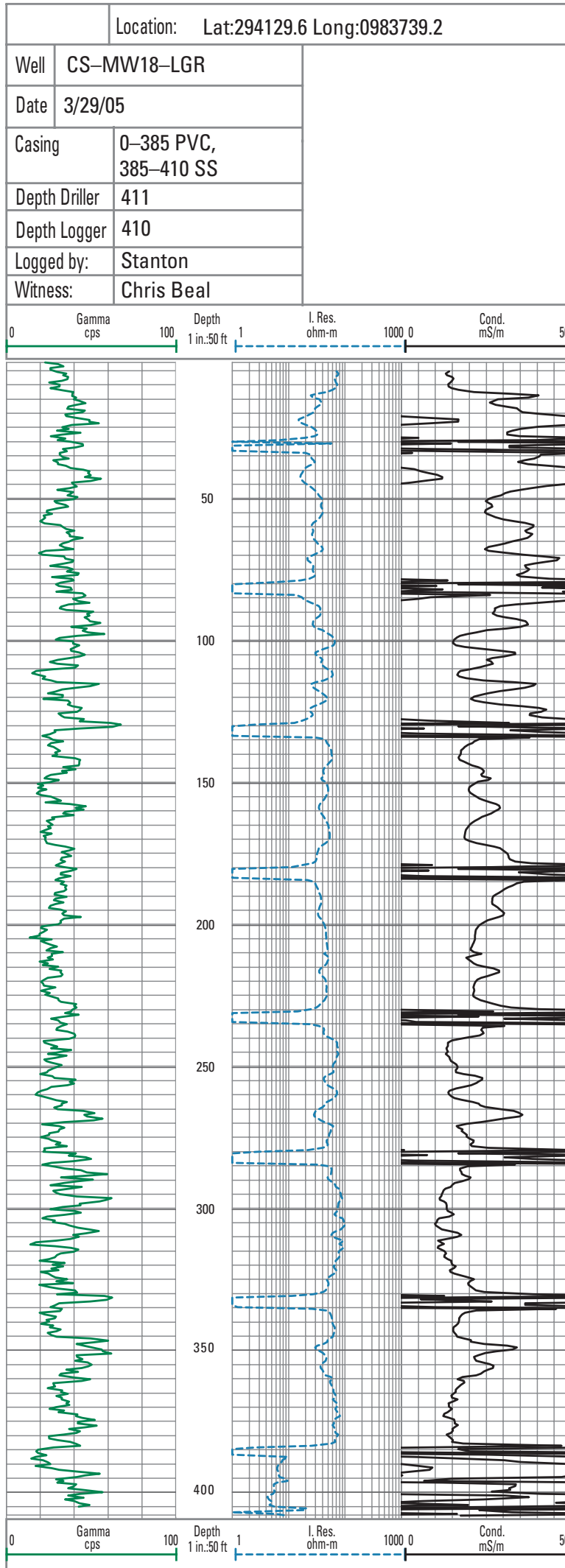


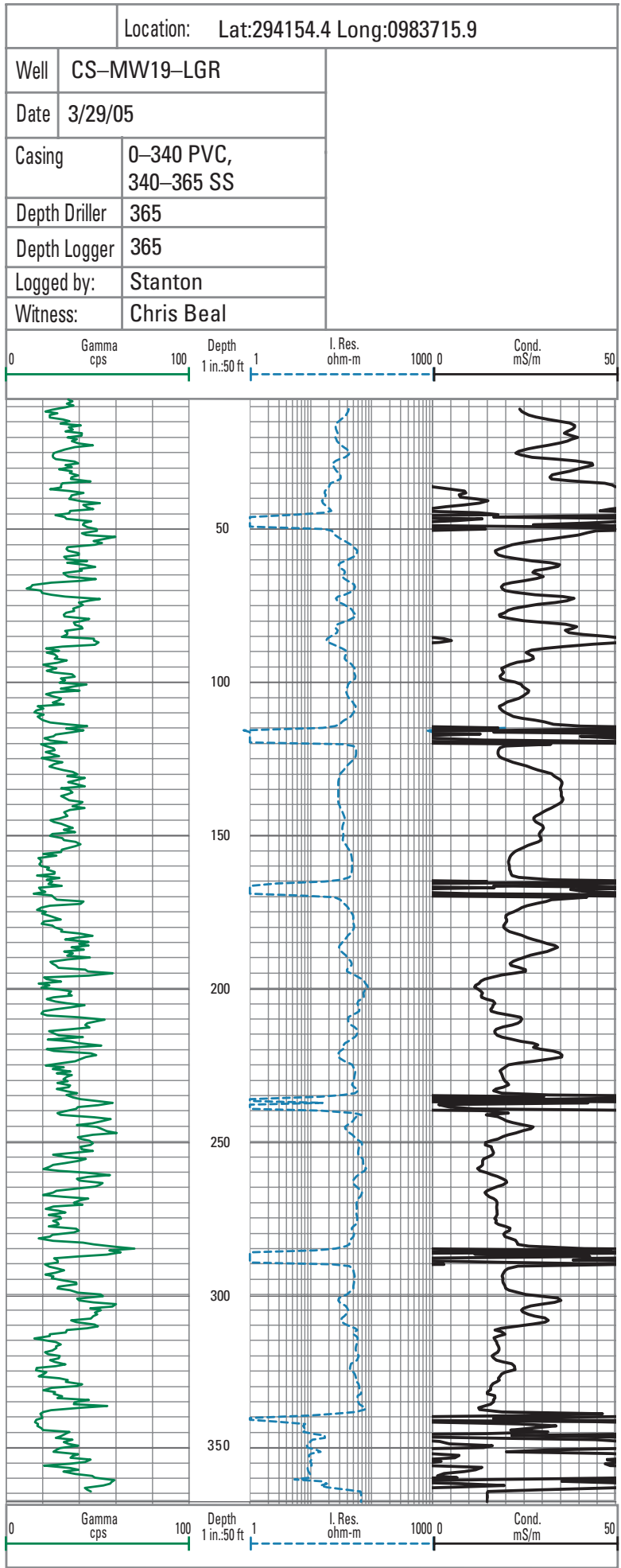


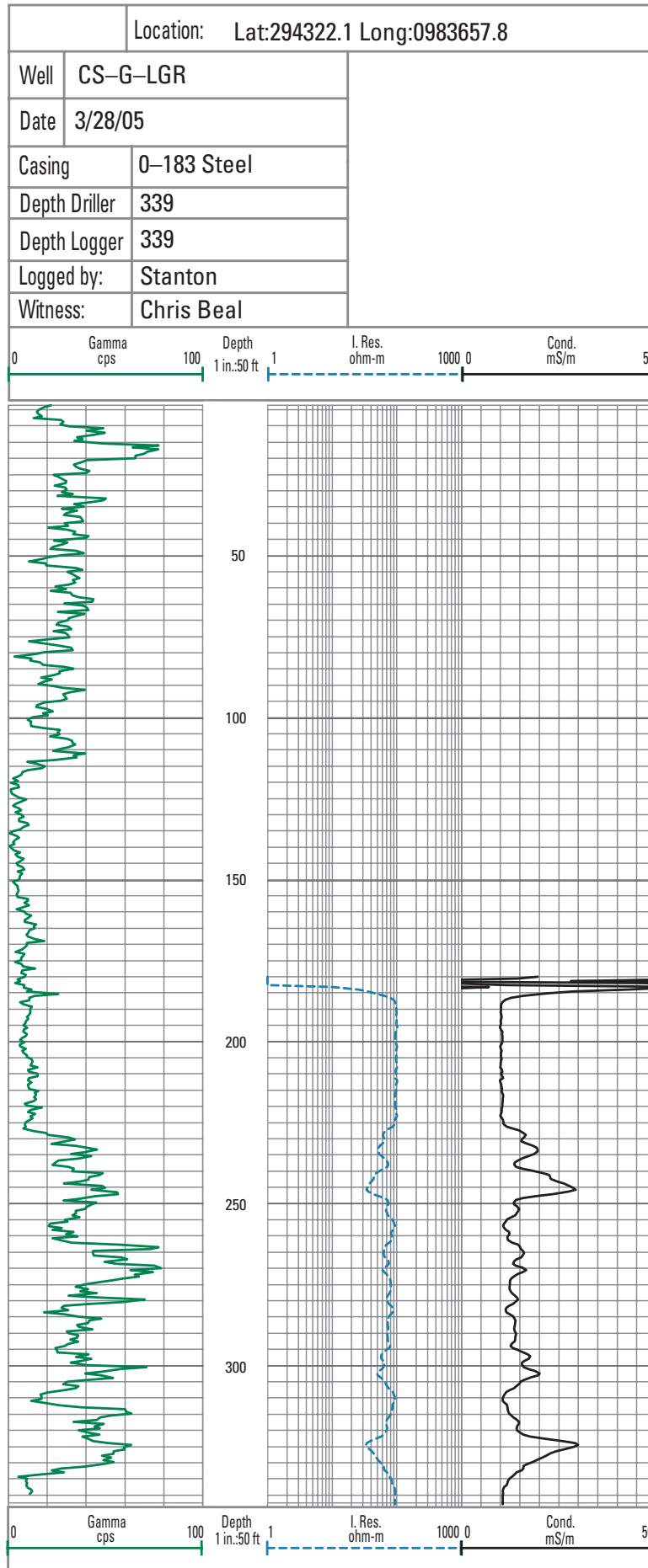












26 Induction Conductivity and Natural Gamma Logs, Camp Stanley Storage Activity, Bexar County, Texas

