

62°45'E

63°E

63°15'E

63°30'E

48⁰⁰⁰⁰

49⁵⁰⁰⁰

51⁰⁰⁰⁰

52⁵⁰⁰⁰

54⁰⁰⁰⁰

55⁵⁰⁰⁰

33°N

364⁵⁰⁰⁰

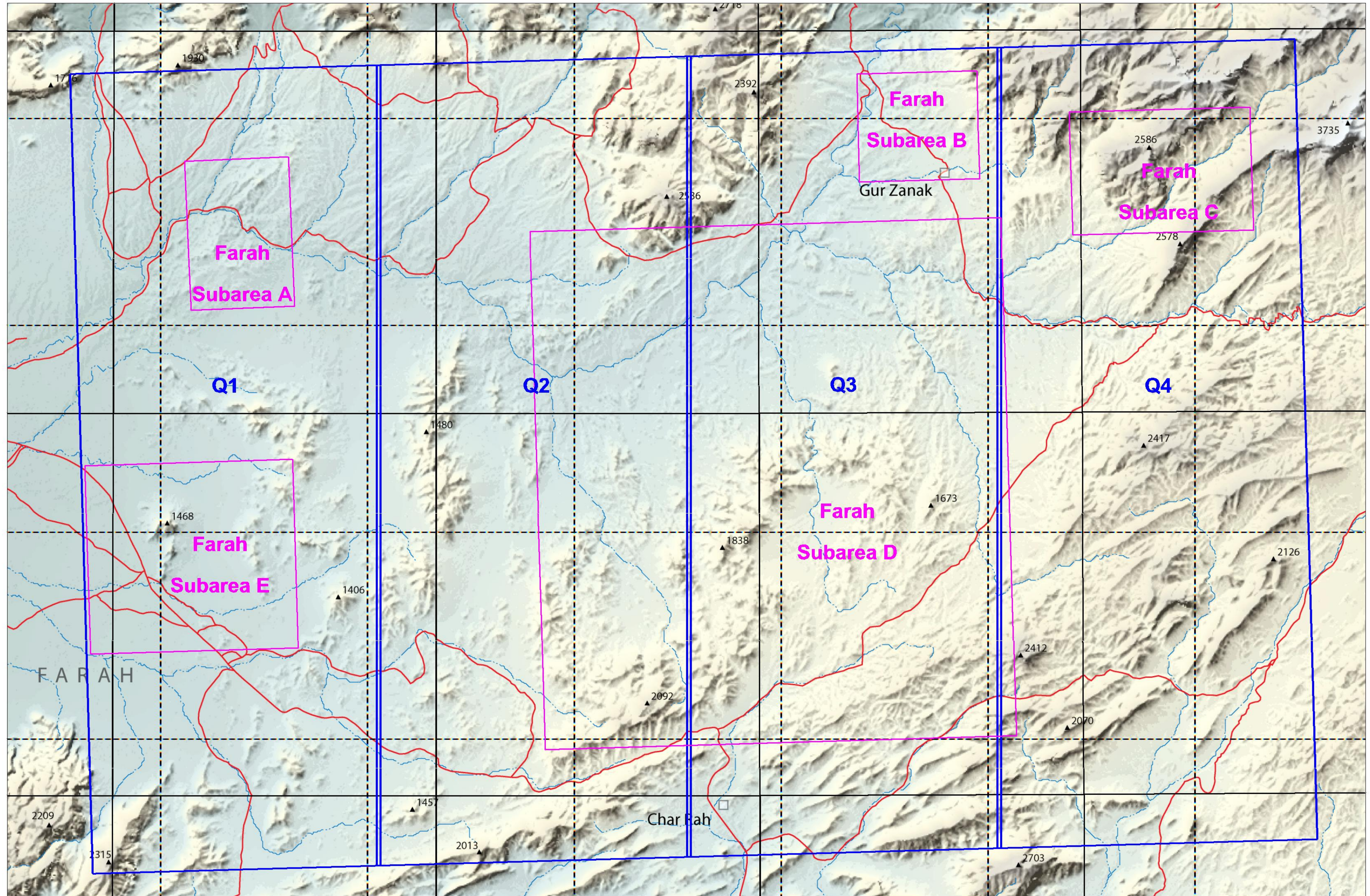
363⁰⁰⁰⁰

32°45'N

361⁵⁰⁰⁰

360⁰⁰⁰⁰

32°30'N



EXPLANATION

- Road
- - - Stream, mostly intermittent
- City, town, or village
- Province boundary
- ▲ Peak
- Image quadrant or tile
- Image subarea

