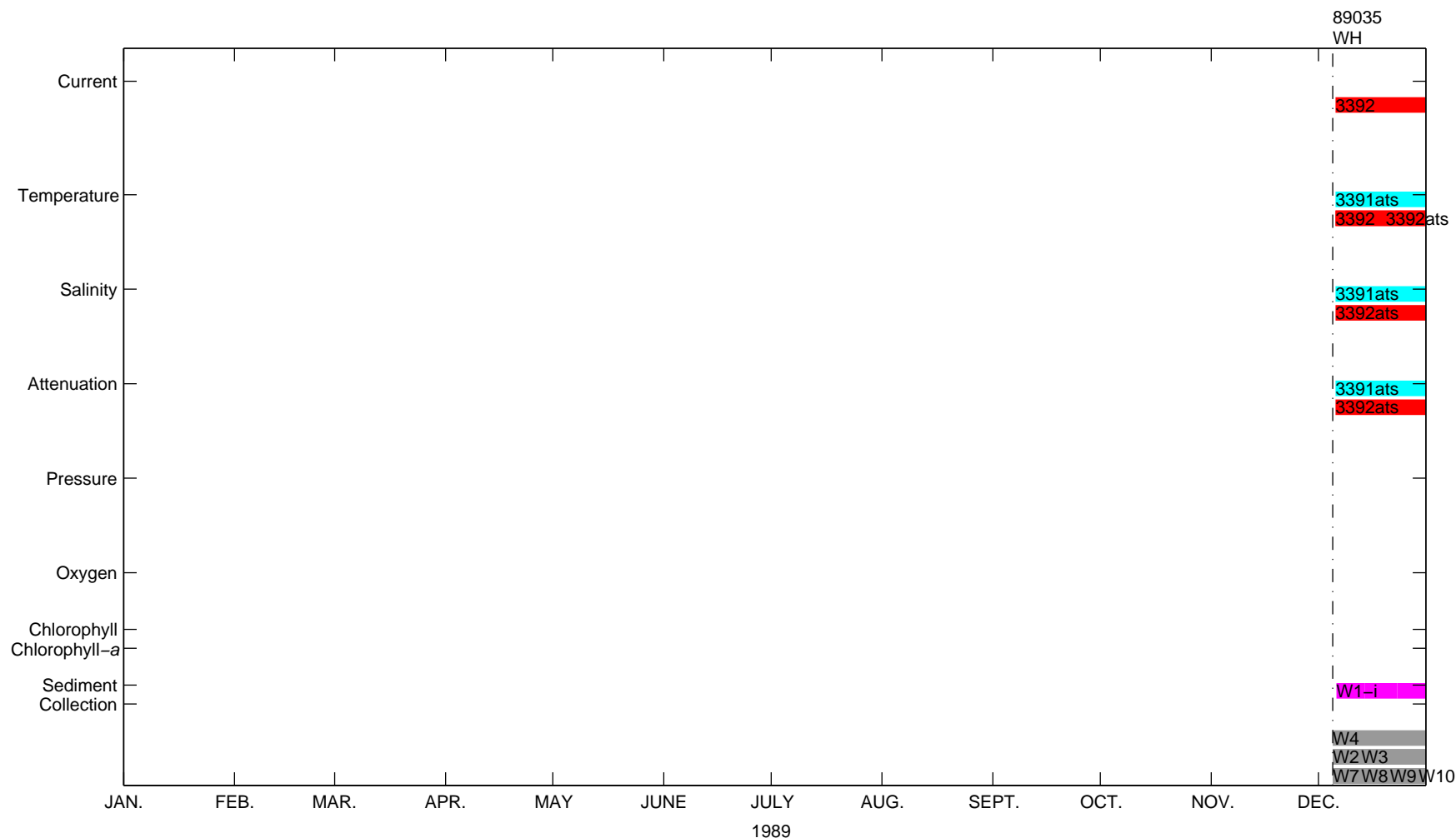


LT-A Data Coverage, 1989



EXPLANATION

Nominal measurement depth and partial file name

- 3411sc* 4–10 meters
- 22 meters (10 meters above bottom)
- 30 meters (1–4 meters above bottom)
- 2–24 meters (30–8 meters above bottom) (ADCP)
- 4 meters above bottom (time-series trap)
- 15–17, 5–8, 2–5, and 0–2 meters above bottom (tube traps)

Partial file name includes mooring number, relative position, segment, and instrument or variable identifier.

*, concatenated data series

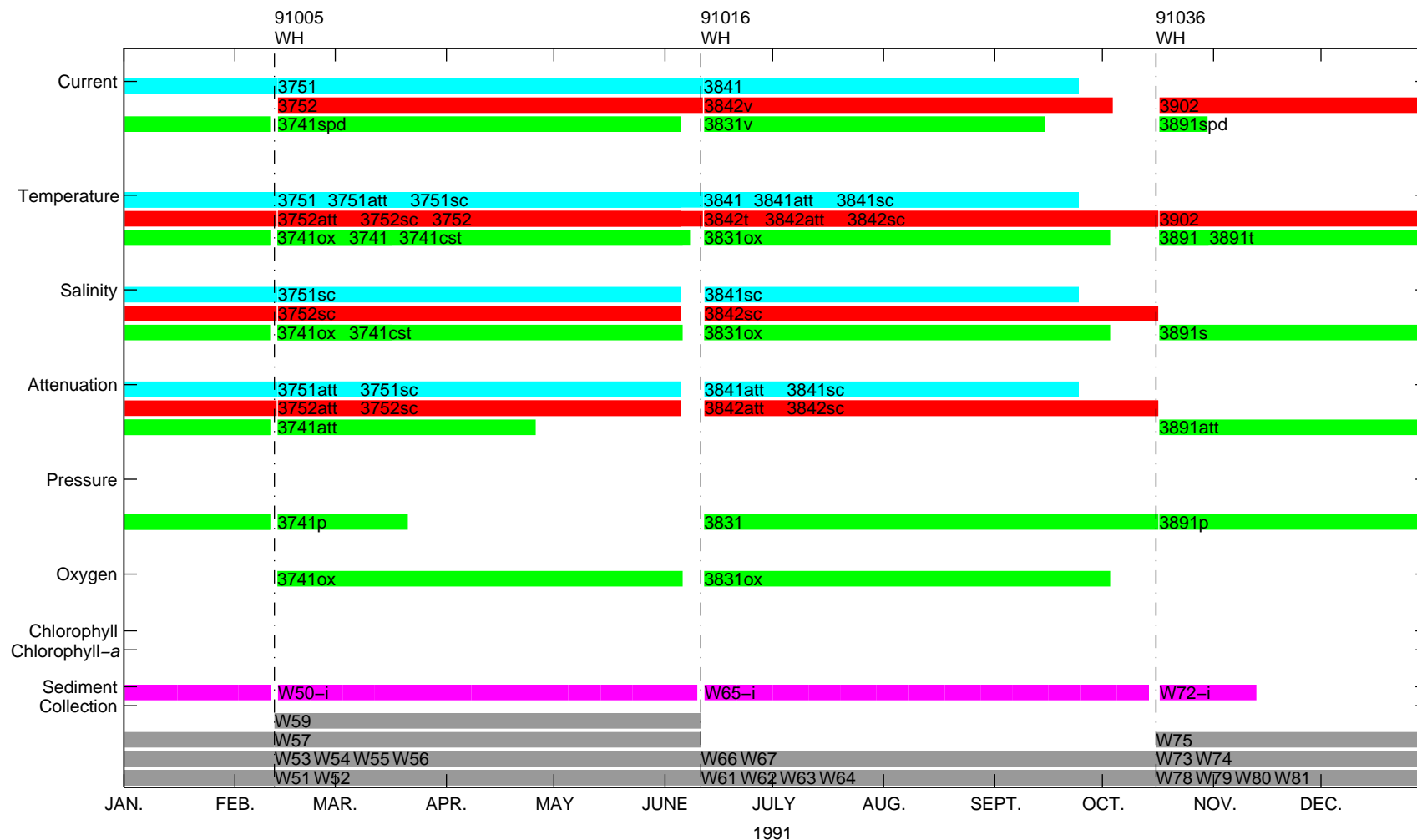
Cruises

YYNNN – USGS cruise identifier

Ships

- | | |
|--------------------|-------------------------|
| WH – White Heath | CA – Christopher Andrew |
| MH – Marcus Hanna | CN – Connecticut |
| AB – Abbie Burgess | AM – Argo Maine |
| L – Looney | |

LT-A Data Coverage, 1991



EXPLANATION

Nominal measurement depth and partial file name

- 3411sc* 4–10 meters
- 22 meters (10 meters above bottom)
- 30 meters (1–4 meters above bottom)
- 2–24 meters (30–8 meters above bottom) (ADCP)
- 4 meters above bottom (time-series trap)
- 15–17, 5–8, 2–5, and 0–2 meters above bottom (tube traps)

Partial file name includes mooring number, relative position, segment, and instrument or variable identifier.

*, concatenated data series

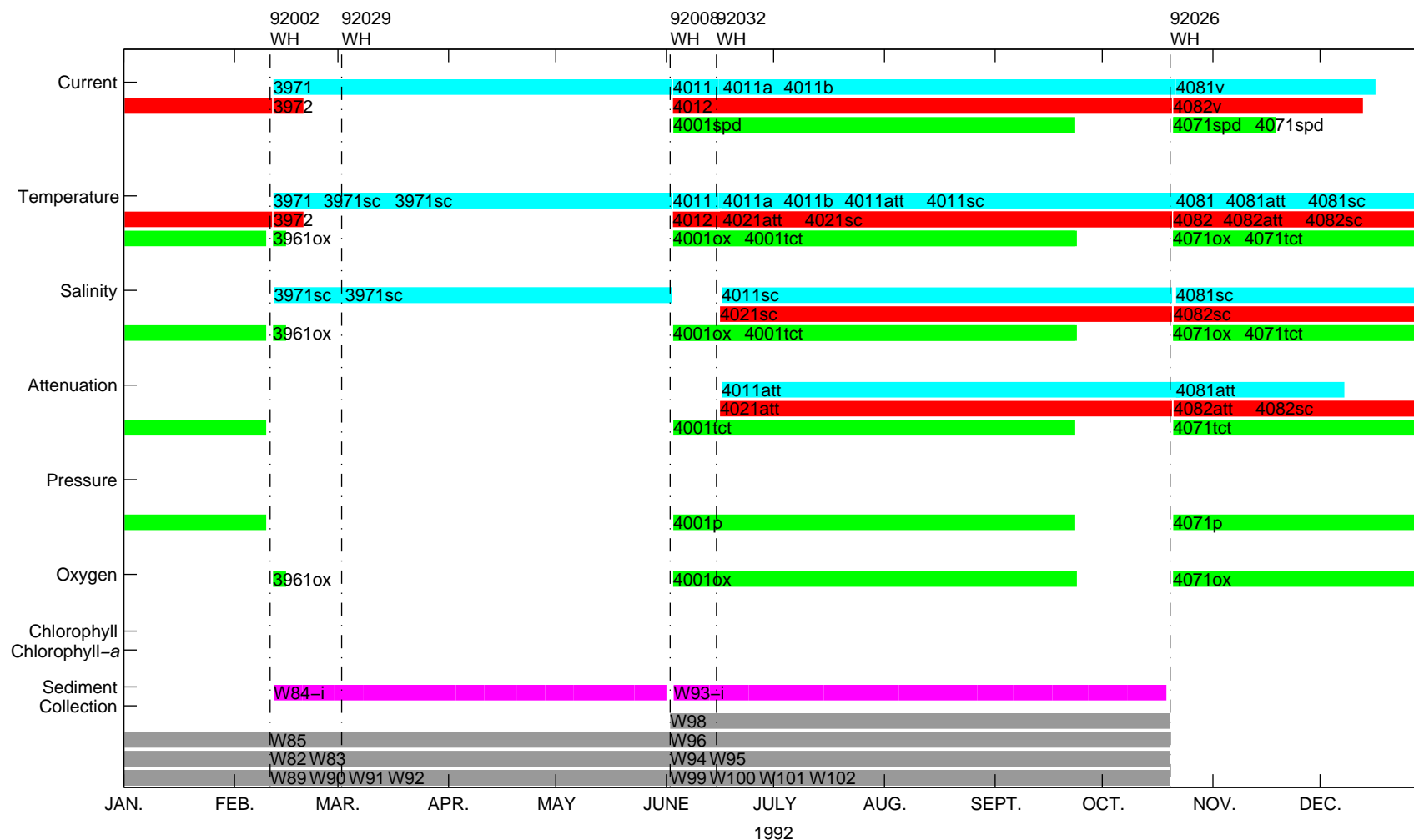
Cruises

YYNNN – USGS cruise identifier

Ships

- WH – White Heath CA – Christopher Andrew
- MH – Marcus Hanna CN – Connecticut
- AB – Abbie Burgess AM – Argo Maine
- L – Looney

LT-A Data Coverage, 1992



EXPLANATION

Nominal measurement depth and partial file name

- 3411sc* 4–10 meters
- 22 meters (10 meters above bottom)
- 30 meters (1–4 meters above bottom)
- 2–24 meters (30–8 meters above bottom) (ADCP)
- 4 meters above bottom (time-series trap)
- 15–17, 5–8, 2–5, and 0–2 meters above bottom (tube traps)

Partial file name includes mooring number, relative position, segment, and instrument or variable identifier.

*, concatenated data series

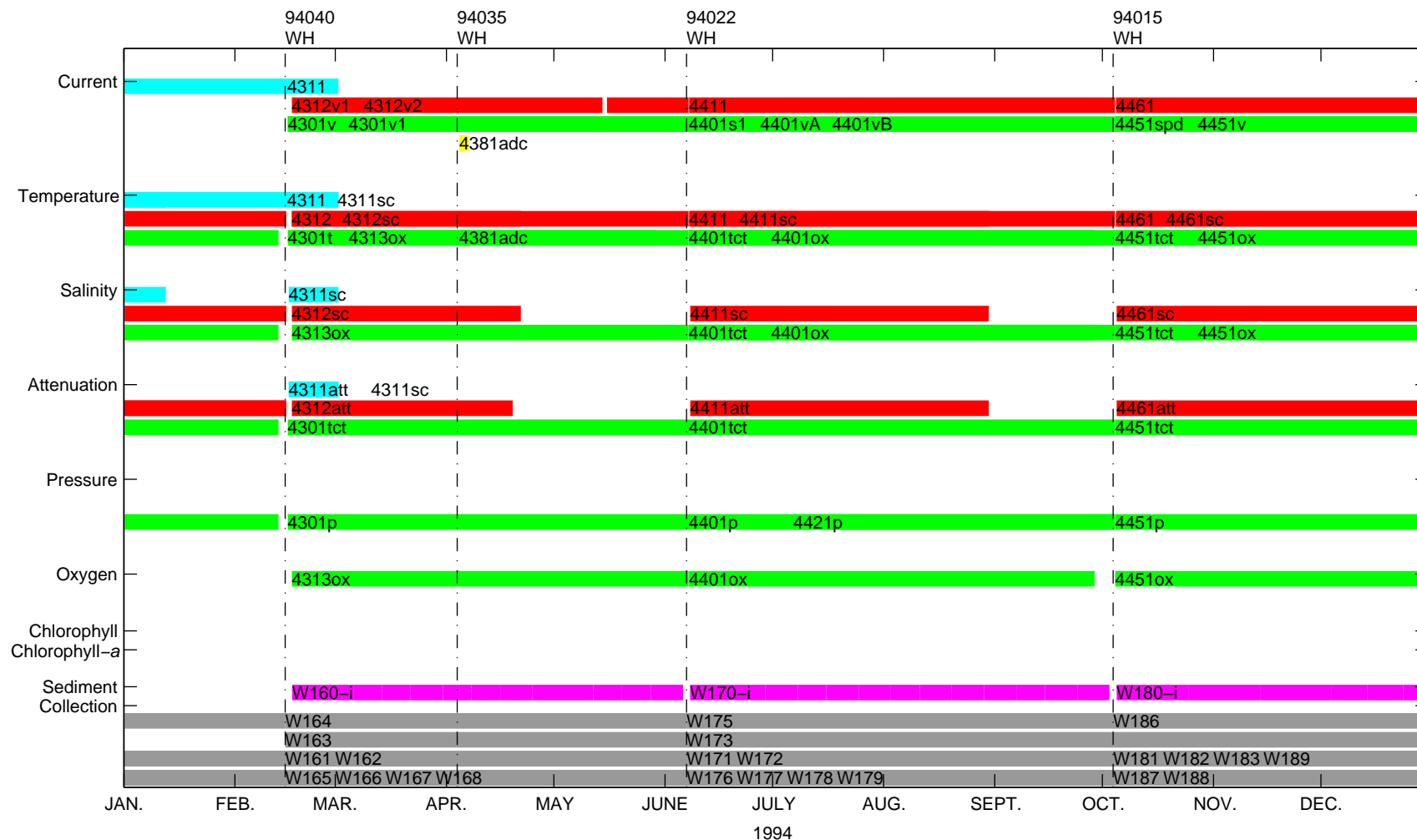
Cruises

YYNNN – USGS cruise identifier

Ships

- WH – White Heath CA – Christopher Andrew
- MH – Marcus Hanna CN – Connecticut
- AB – Abbie Burgess AM – Argo Maine
- L – Looney

LT-A Data Coverage, 1994



EXPLANATION

Nominal measurement depth and partial file name

- 3411sc* 4–10 meters
- 22 meters (10 meters above bottom)
- 30 meters (1–4 meters above bottom)
- 2–24 meters (30–8 meters above bottom) (ADCP)
- 4 meters above bottom (time-series trap)
- 15–17, 5–8, 2–5, and 0–2 meters above bottom (tube traps)

Partial file name includes mooring number, relative position, segment, and instrument or variable identifier.

*, concatenated data series

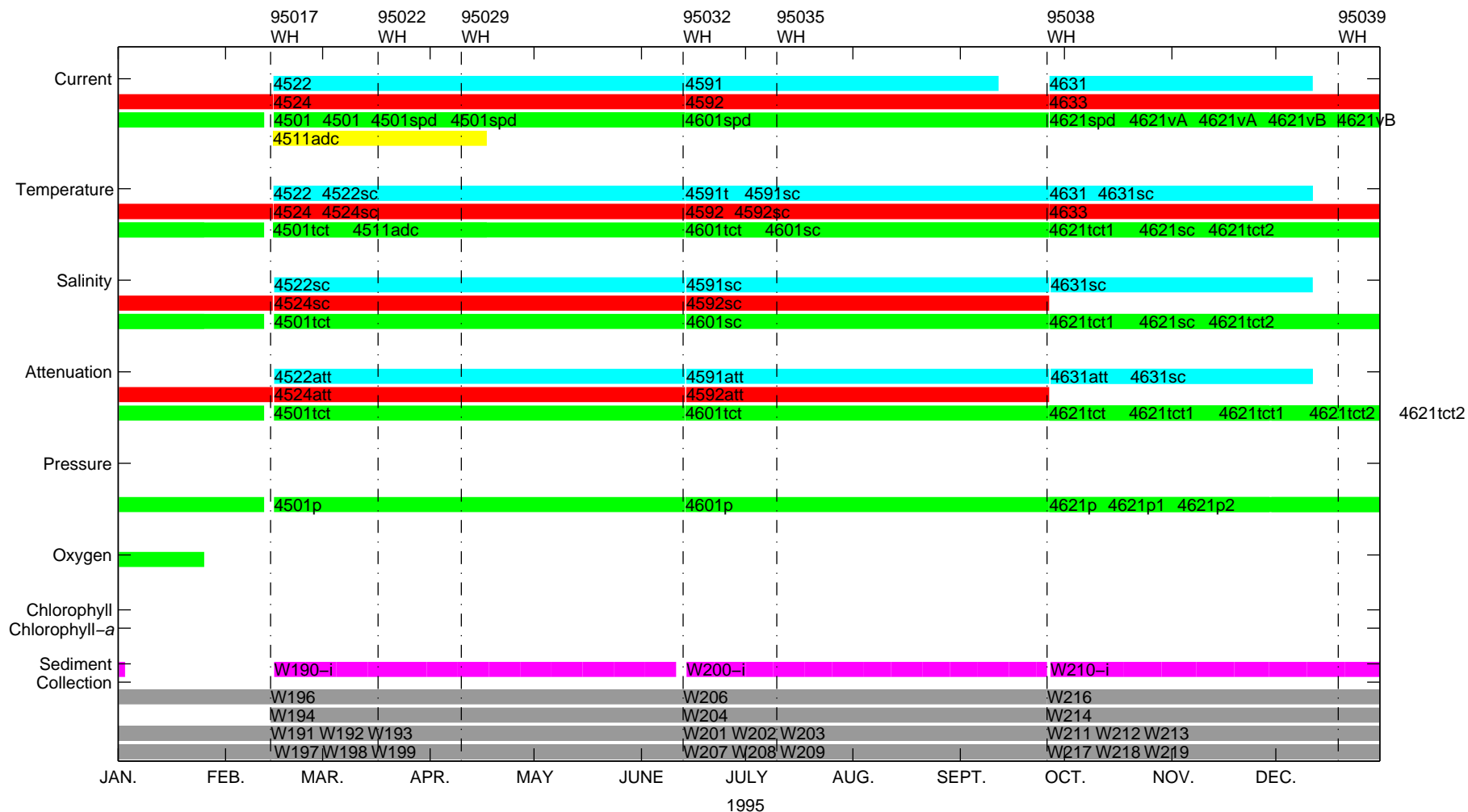
Cruises

YYNNN – USGS cruise identifier

Ships

- WH – White Heath
- CA – Christopher Andrew
- MH – Marcus Hanna
- CN – Connecticut
- AB – Abbie Burgess
- AM – Argo Maine
- L – Looney

LT-A Data Coverage, 1995



EXPLANATION

Nominal measurement depth and partial file name

- 3411sc* 4–10 meters
- 22 meters (10 meters above bottom)
- 30 meters (1–4 meters above bottom)
- 2–24 meters (30–8 meters above bottom) (ADCP)
- 4 meters above bottom (time-series trap)
- 15–17, 5–8, 2–5, and 0–2 meters above bottom (tube traps)

Partial file name includes mooring number, relative position, segment, and instrument or variable identifier.

*, concatenated data series

Cruises

YYNNN – USGS cruise identifier

Ships

- WH – White Heath CA – Christopher Andrew
- MH – Marcus Hanna CN – Connecticut
- AB – Abbie Burgess AM – Argo Maine
- L – Looney

LT-A Data Coverage, 1996



EXPLANATION

Nominal measurement depth and partial file name

- 3411sc* 4–10 meters
- 22 meters (10 meters above bottom)
- 30 meters (1–4 meters above bottom)
- 2–24 meters (30–8 meters above bottom) (ADCP)
- 4 meters above bottom (time-series trap)
- 15–17, 5–8, 2–5, and 0–2 meters above bottom (tube traps)

Partial file name includes mooring number, relative position, segment, and instrument or variable identifier.

*, concatenated data series

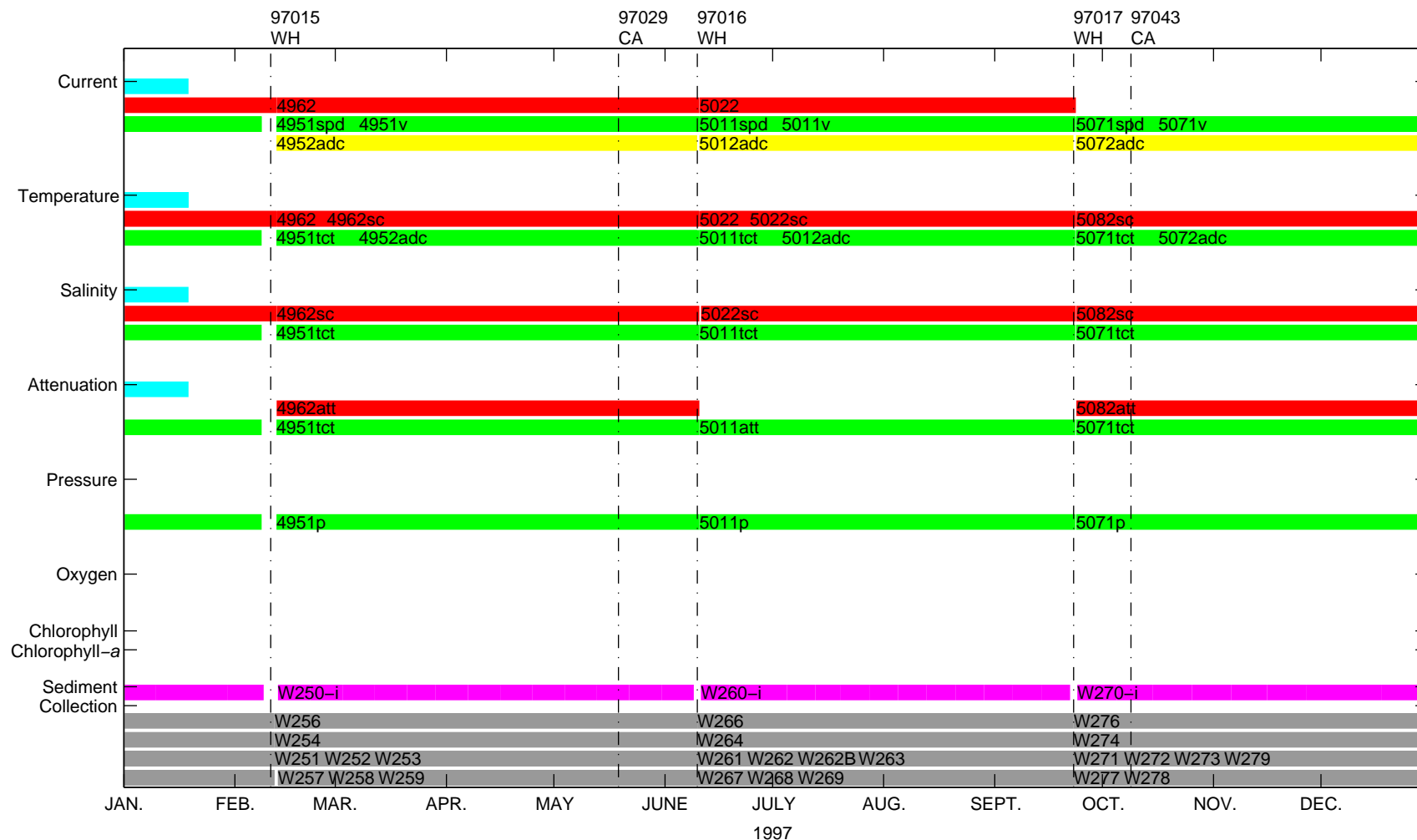
Cruises

YYNNN – USGS cruise identifier

Ships

- | | |
|--------------------|-------------------------|
| WH – White Heath | CA – Christopher Andrew |
| MH – Marcus Hanna | CN – Connecticut |
| AB – Abbie Burgess | AM – Argo Maine |
| | L – Looney |

LT-A Data Coverage, 1997



EXPLANATION

Nominal measurement depth and partial file name

- 3411sc* 4–10 meters
- 22 meters (10 meters above bottom)
- 30 meters (1–4 meters above bottom)
- 2–24 meters (30–8 meters above bottom) (ADCP)
- 4 meters above bottom (time-series trap)
- 15–17, 5–8, 2–5, and 0–2 meters above bottom (tube traps)

Partial file name includes mooring number, relative position, segment, and instrument or variable identifier.

*, concatenated data series

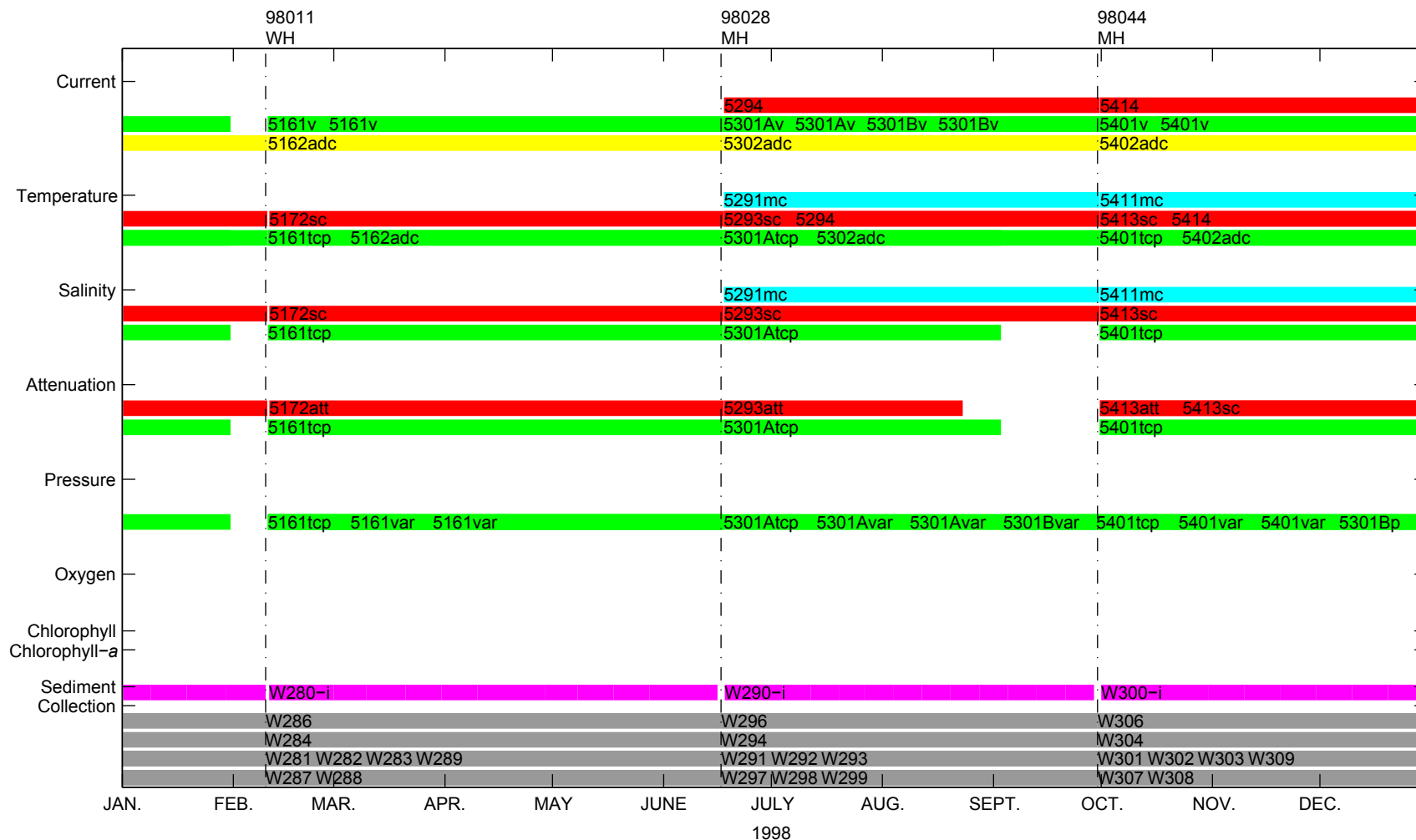
Cruises

YYNNN – USGS cruise identifier

Ships

- | | |
|--------------------|-------------------------|
| WH – White Heath | CA – Christopher Andrew |
| MH – Marcus Hanna | CN – Connecticut |
| AB – Abbie Burgess | AM – Argo Maine |
| | L – Looney |

LT-A Data Coverage, 1998



EXPLANATION

Nominal measurement depth and partial file name

- 3411sc* 4-10 meters
- 22 meters (10 meters above bottom)
- 30 meters (1-4 meters above bottom)
- 2-24 meters (30-8 meters above bottom) (ADCP)
- 4 meters above bottom (time-series trap)
- 15-17, 5-8, 2-5, and 0-2 meters above bottom (tube traps)

Partial file name includes mooring number, relative position, segment, and instrument or variable identifier.

*, concatenated data series

Cruises

YYNNN - USGS cruise identifier

Ships

- WH - White Heath CA - Christopher Andrew
- MH - Marcus Hanna CN - Connecticut
- AB - Abbie Burgess AM - Argo Maine
- L - Looney

LT-A Data Coverage, 1999



EXPLANATION

Nominal measurement depth and partial file name

- 3411sc* 4-10 meters
- 22 meters (10 meters above bottom)
- 30 meters (1-4 meters above bottom)
- 2-24 meters (30-8 meters above bottom) (ADCP)
- 4 meters above bottom (time-series trap)
- 15-17, 5-8, 2-5, and 0-2 meters above bottom (tube traps)

Partial file name includes mooring number, relative position, segment, and instrument or variable identifier.

*, concatenated data series

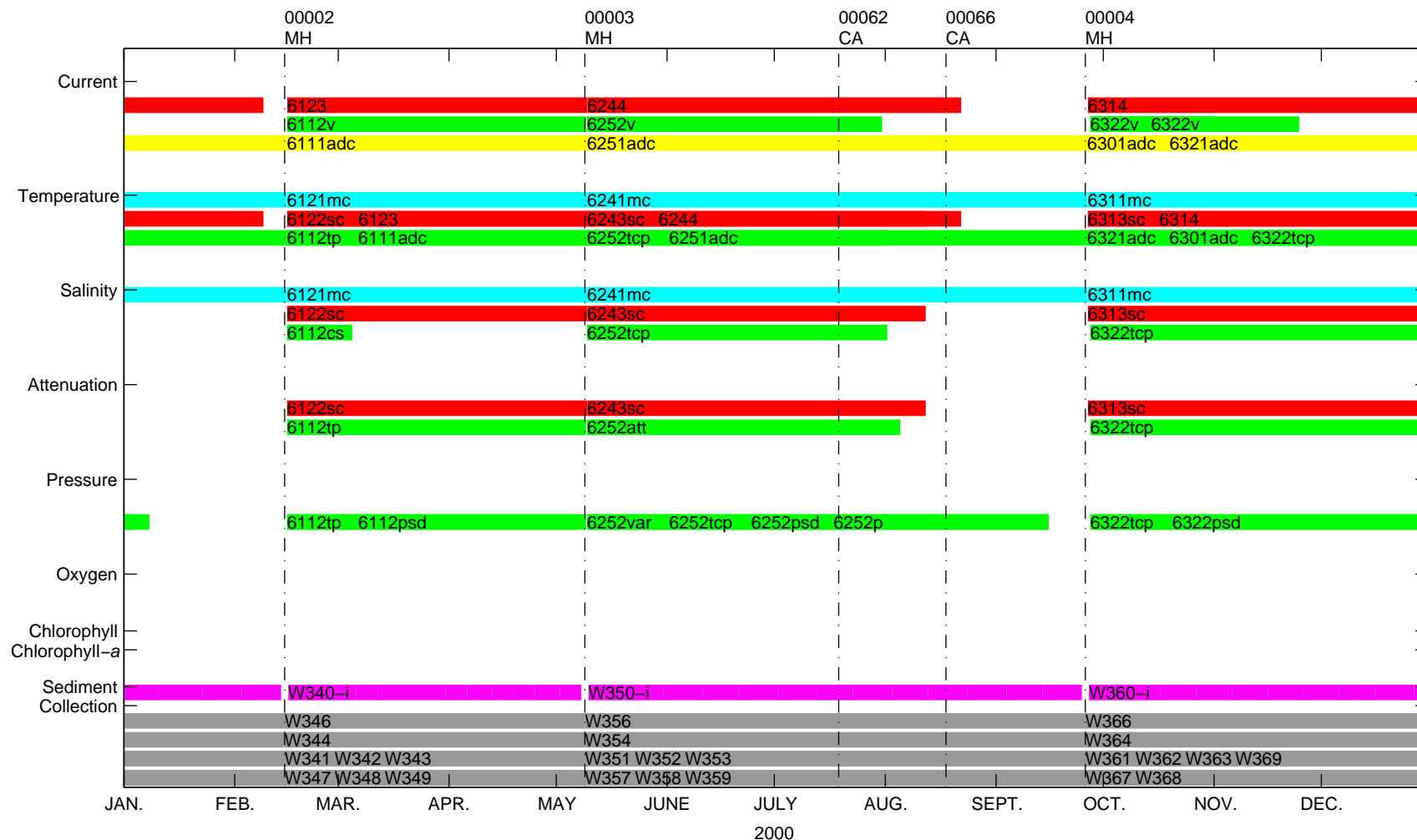
Cruises

YYNNN - USGS cruise identifier

Ships

- | | |
|--------------------|-------------------------|
| WH - White Heath | CA - Christopher Andrew |
| MH - Marcus Hanna | CN - Connecticut |
| AB - Abbie Burgess | AM - Argo Maine |
| | L - Looney |

LT-A Data Coverage, 2000



EXPLANATION

Nominal measurement depth and partial file name

- 3411sc* 4–10 meters
- 22 meters (10 meters above bottom)
- 30 meters (1–4 meters above bottom)
- 2–24 meters (30–8 meters above bottom) (ADCP)
- 4 meters above bottom (time-series trap)
- 15–17, 5–8, 2–5, and 0–2 meters above bottom (tube traps)

Partial file name includes mooring number, relative position, segment, and instrument or variable identifier.

*, concatenated data series

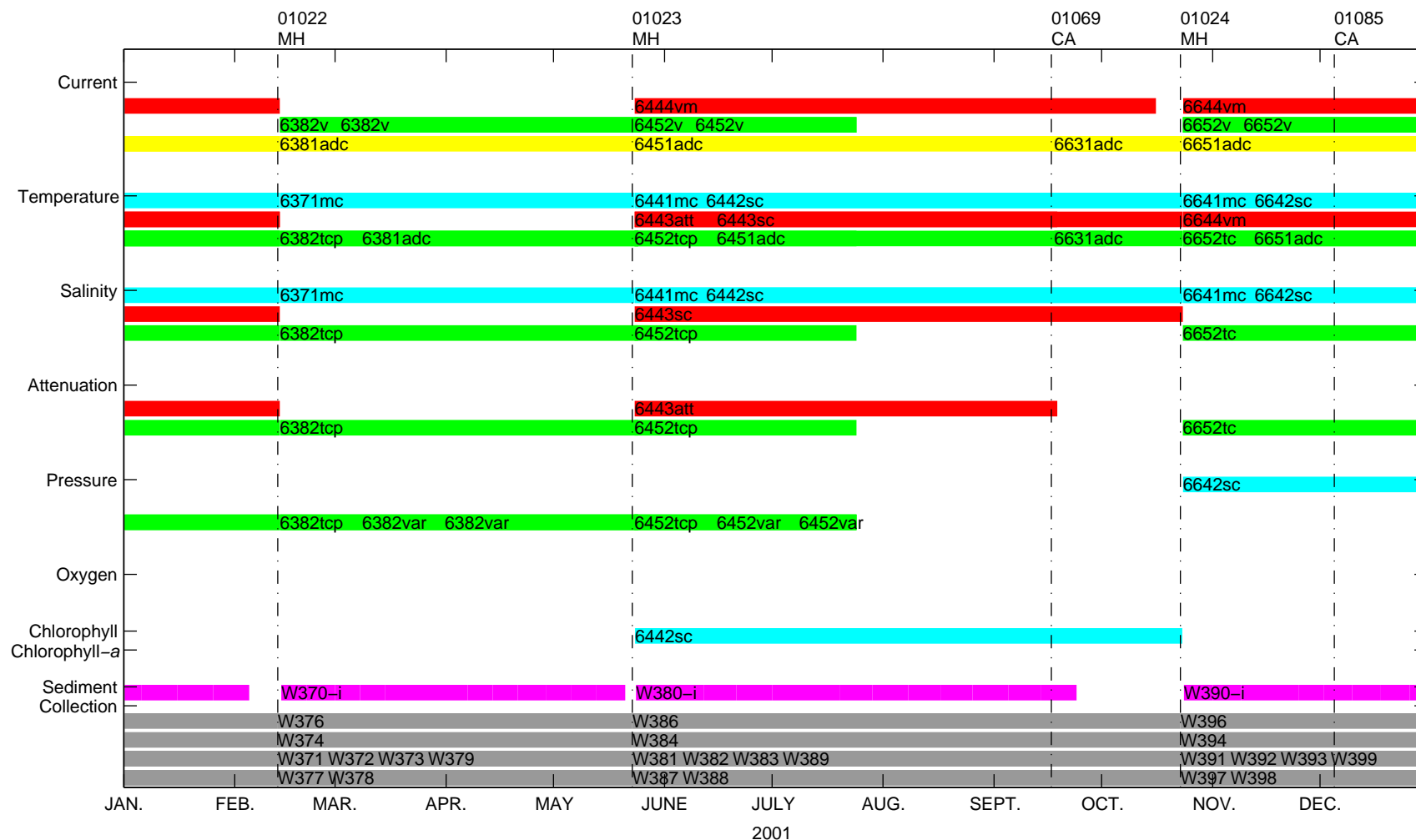
Cruises

YYNNN – USGS cruise identifier

Ships

- | | |
|--------------------|-------------------------|
| WH – White Heath | CA – Christopher Andrew |
| MH – Marcus Hanna | CN – Connecticut |
| AB – Abbie Burgess | AM – Argo Maine |
| | L – Looney |

LT-A Data Coverage, 2001



EXPLANATION

Nominal measurement depth and partial file name

- 3411sc* 4–10 meters
- 22 meters (10 meters above bottom)
- 30 meters (1–4 meters above bottom)
- 2–24 meters (30–8 meters above bottom) (ADCP)
- 4 meters above bottom (time-series trap)
- 15–17, 5–8, 2–5, and 0–2 meters above bottom (tube traps)

Partial file name includes mooring number, relative position, segment, and instrument or variable identifier.

*, concatenated data series

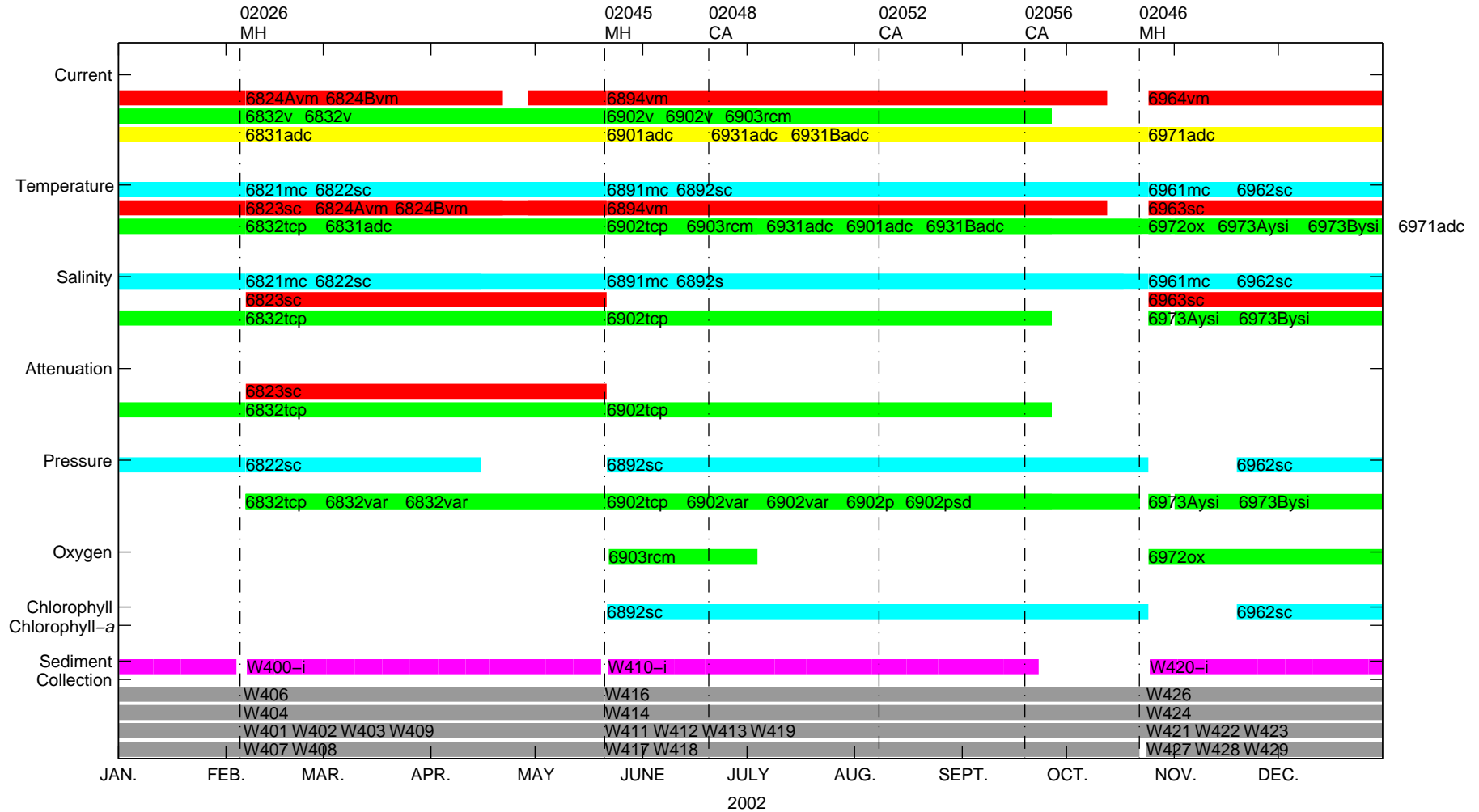
Cruises

YYNNN – USGS cruise identifier

Ships

- WH – White Heath
- CA – Christopher Andrew
- MH – Marcus Hanna
- CN – Connecticut
- AB – Abbie Burgess
- AM – Argo Maine
- L – Looney

LT-A Data Coverage, 2002



Nominal measurement depth and partial file name

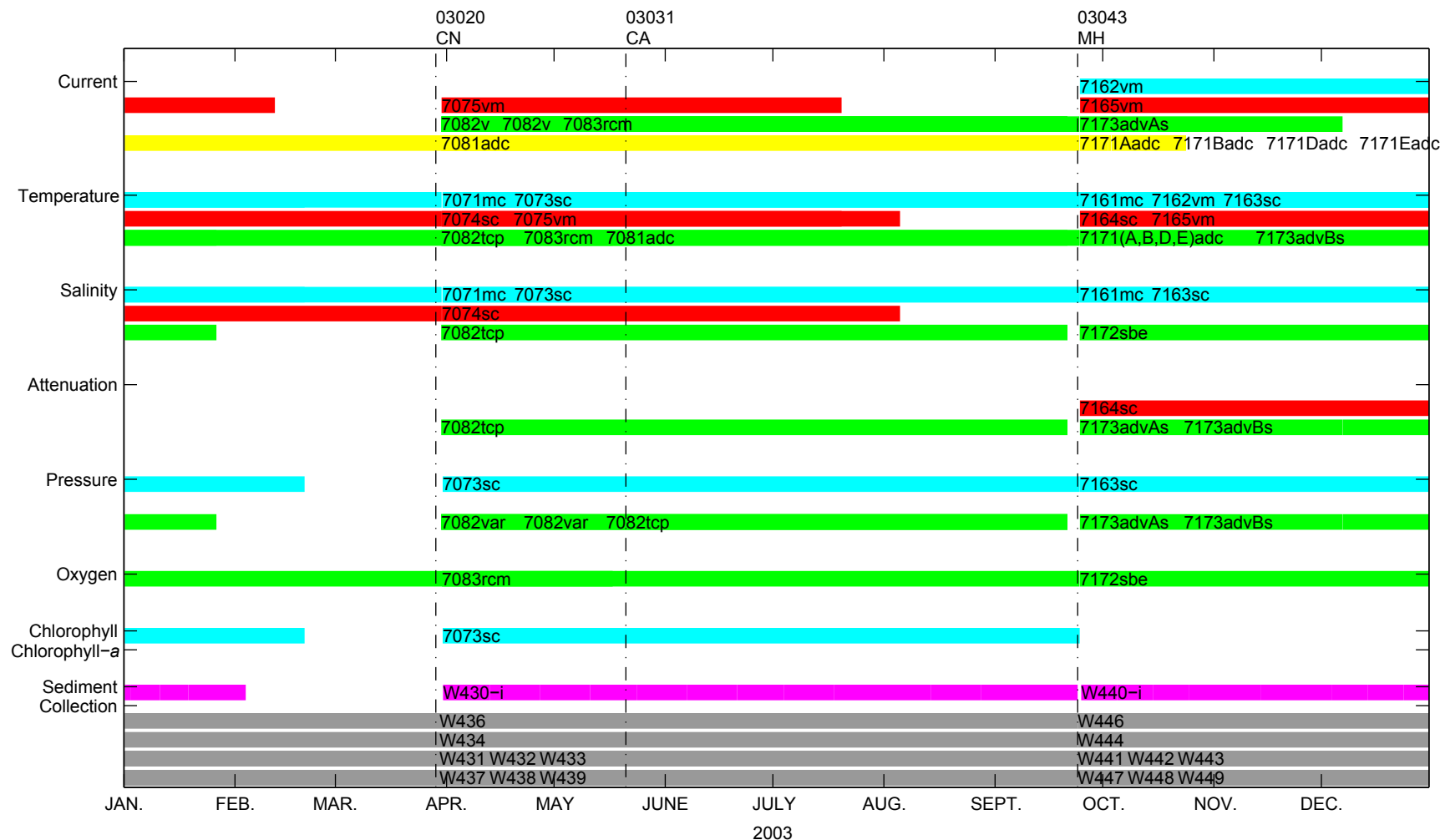
- 3411sc* 4–10 meters
- 22 meters (10 meters above bottom)
- 30 meters (1–4 meters above bottom)
- 2–24 meters (30–8 meters above bottom) (ADCP)
- 4 meters above bottom (time-series trap)
- 15–17, 5–8, 2–5, and 0–2 meters above bottom (tube traps)

Partial file name includes mooring number, relative position, segment, and instrument or variable identifier.
 *, concatenated data series

EXPLANATION

- Cruises**
 YYNNN – USGS cruise identifier
- Ships**
- | | |
|--------------------|-------------------------|
| WH – White Heath | CA – Christopher Andrew |
| MH – Marcus Hanna | CN – Connecticut |
| AB – Abbie Burgess | AM – Argo Maine |
| | L – Looney |

LT-A Data Coverage, 2003



EXPLANATION

Nominal measurement depth and partial file name

- 3411sc* 4-10 meters
- 22 meters (10 meters above bottom)
- 30 meters (1-4 meters above bottom)
- 2-24 meters (30-8 meters above bottom) (ADCP)
- 4 meters above bottom (time-series trap)
- 15-17, 5-8, 2-5, and 0-2 meters above bottom (tube traps)

Partial file name includes mooring number, relative position, segment, and instrument or variable identifier.

*, concatenated data series

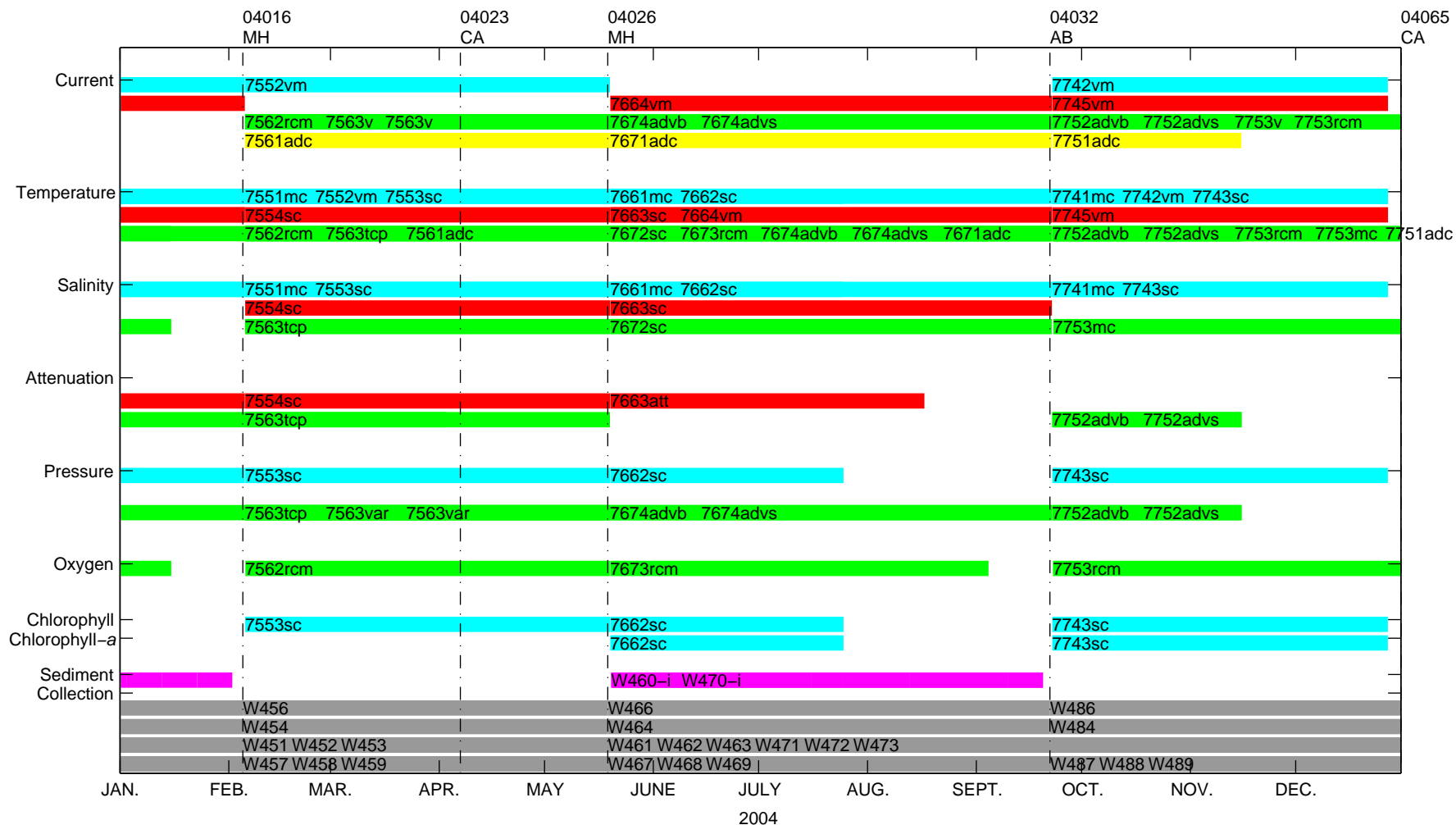
Cruises

YYNNN – USGS cruise identifier

Ships

- | | |
|--------------------|-------------------------|
| WH – White Heath | CA – Christopher Andrew |
| MH – Marcus Hanna | CN – Connecticut |
| AB – Abbie Burgess | AM – Argo Maine |
| | L – Looney |

LT-A Data Coverage, 2004



EXPLANATION

Nominal measurement depth and partial file name

- 3411sc* 4–10 meters
- 22 meters (10 meters above bottom)
- 30 meters (1–4 meters above bottom)
- 2–24 meters (30–8 meters above bottom) (ADCP)
- 4 meters above bottom (time-series trap)
- 15–17, 5–8, 2–5, and 0–2 meters above bottom (tube traps)

Partial file name includes mooring number, relative position, segment, and instrument or variable identifier.

*, concatenated data series

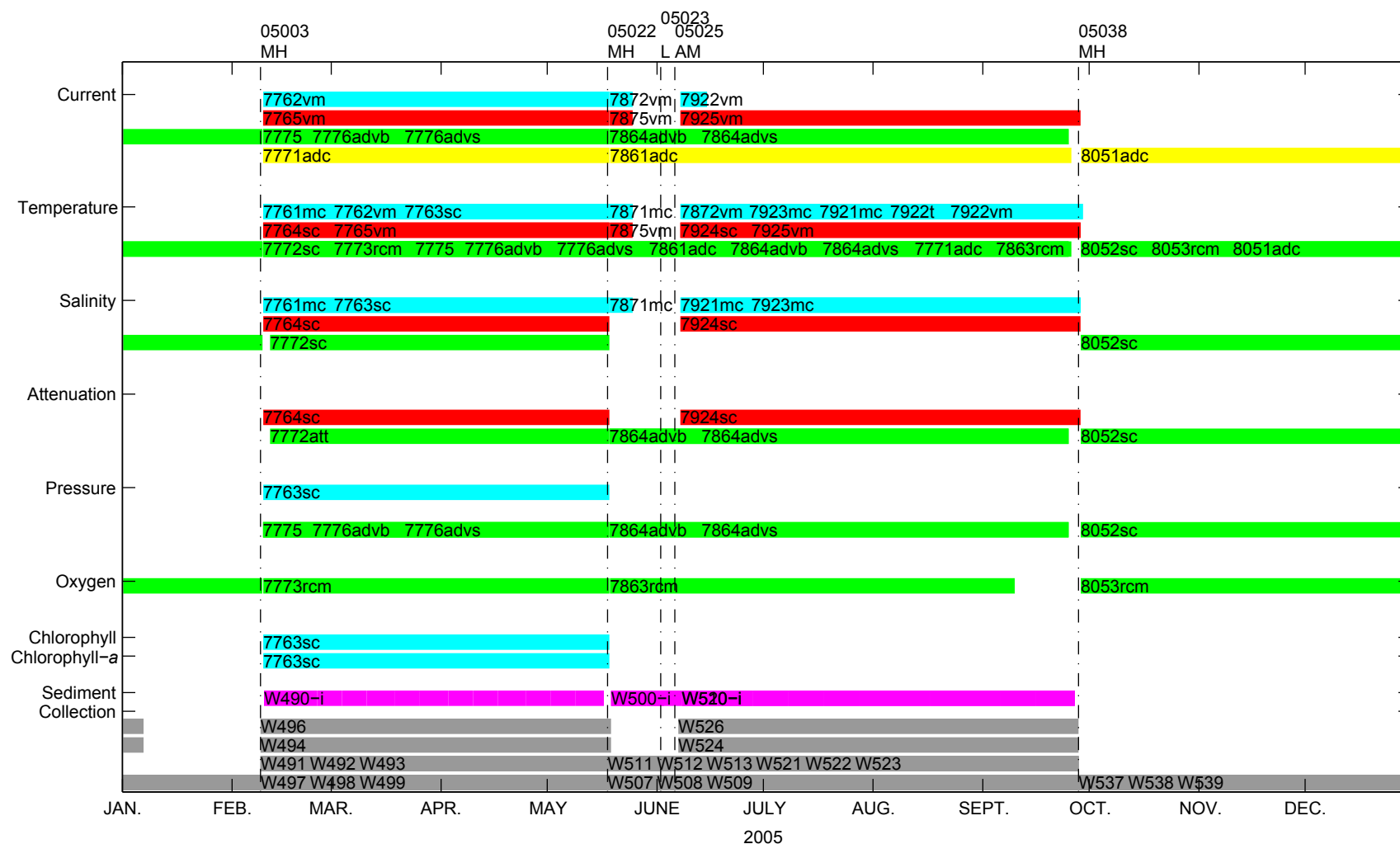
Cruises

YYNNN – USGS cruise identifier

Ships

- WH – White Heath
- CA – Christopher Andrew
- MH – Marcus Hanna
- CN – Connecticut
- AB – Abbie Burgess
- AM – Argo Maine
- L – Looney

LT-A Data Coverage, 2005



EXPLANATION

Nominal measurement depth and partial file name

- 3411sc* 4-10 meters
- 22 meters (10 meters above bottom)
- 30 meters (1-4 meters above bottom)
- 2-24 meters (30-8 meters above bottom) (ADCP)
- 4 meters above bottom (time-series trap)
- 15-17, 5-8, 2-5, and 0-2 meters above bottom (tube traps)

Partial file name includes mooring number, relative position, segment, and instrument or variable identifier.

*, concatenated data series

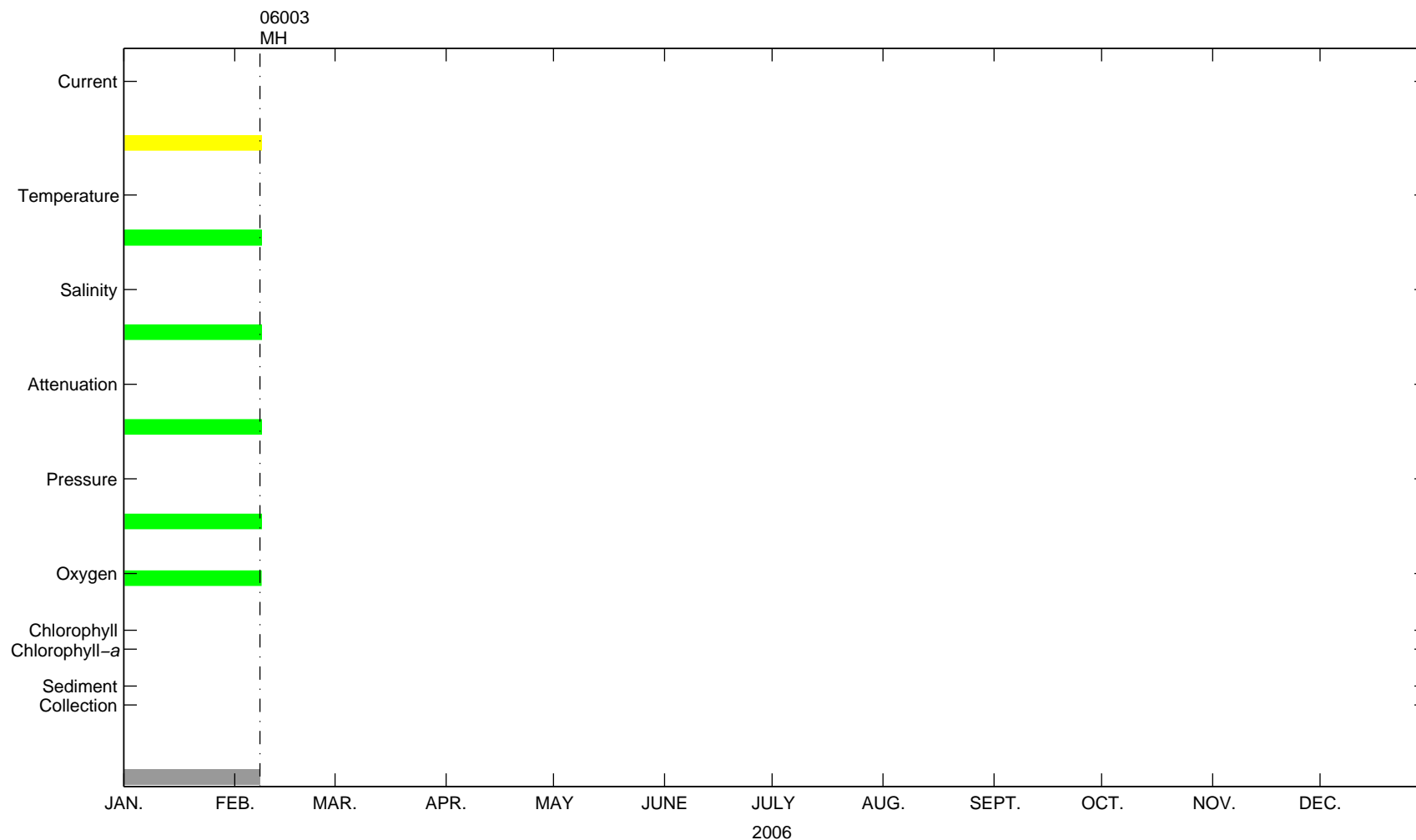
Cruises

YYNNN - USGS cruise identifier

Ships

- WH - White Heath
- MH - Marcus Hanna
- AB - Abbie Burgess
- CA - Christopher Andrew
- CN - Connecticut
- AM - Argo Maine
- L - Looney

LT-A Data Coverage, 2006



EXPLANATION

Nominal measurement depth and partial file name

	3411sc*	4-10 meters
		22 meters (10 meters above bottom)
		30 meters (1-4 meters above bottom)
		2-24 meters (30-8 meters above bottom) (ADCP)
		4 meters above bottom (time-series trap)
		15-17, 5-8, 2-5, and 0-2 meters above bottom (tube traps)

Partial file name includes mooring number, relative position, segment, and instrument or variable identifier.

*, concatenated data series

Cruises

YYNNN – USGS cruise identifier

Ships

WH – White Heath	CA – Christopher Andrew
MH – Marcus Hanna	CN – Connecticut
AB – Abbie Burgess	AM – Argo Maine
L – Looney	