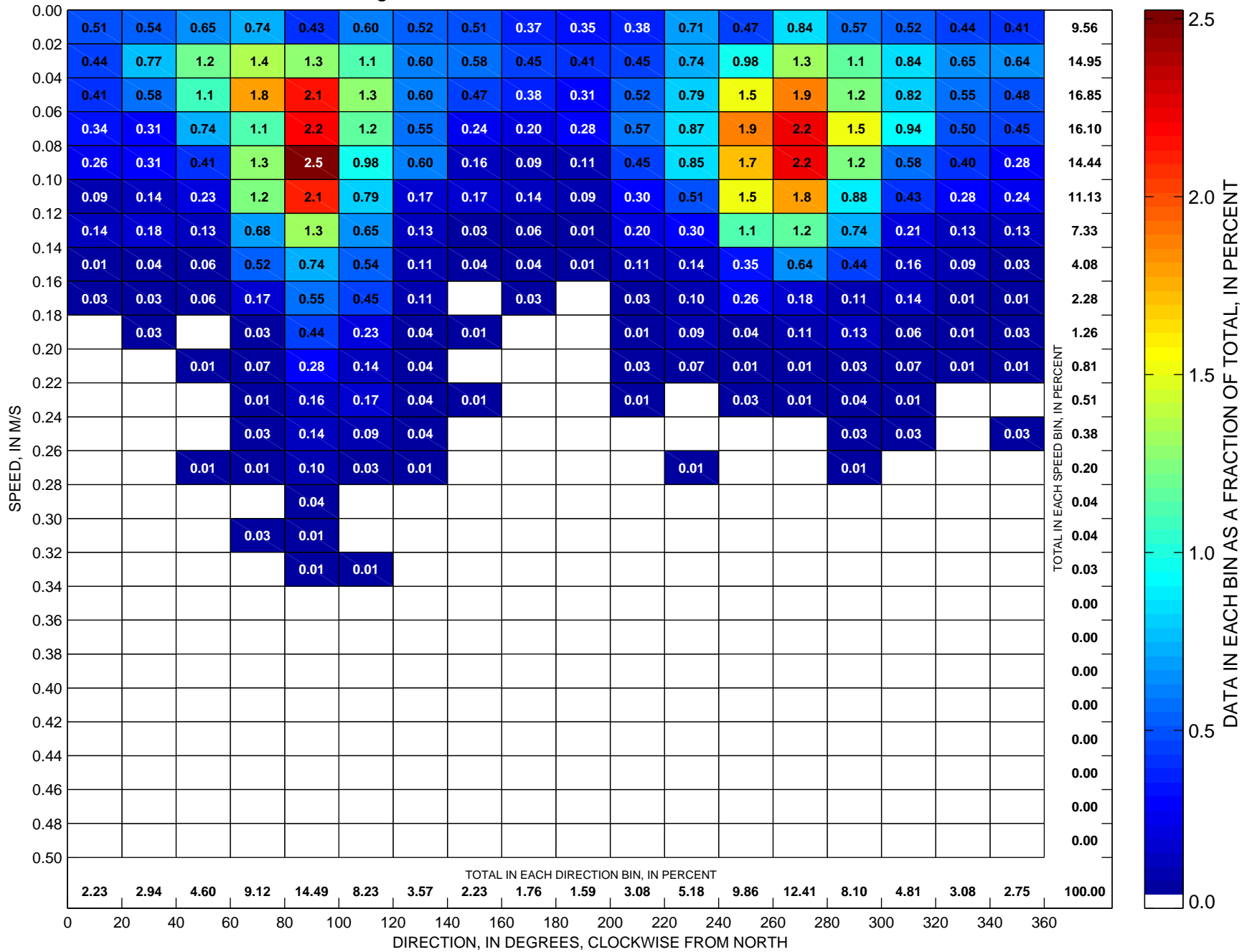


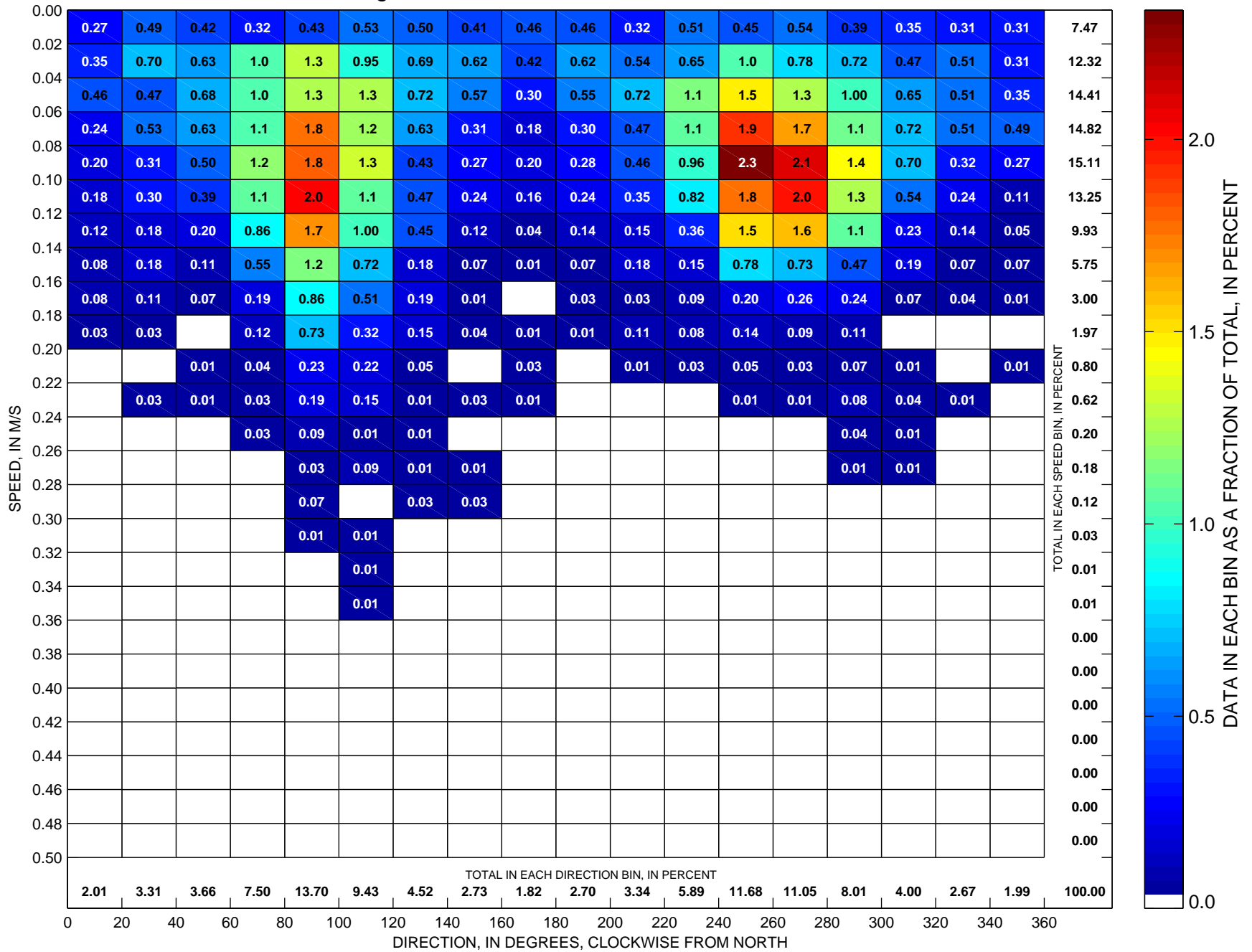


### Currents at LT-A Sorted by Speed and Direction Hour-Averaged Point Current-Meter Observations at ~22 m, 1990



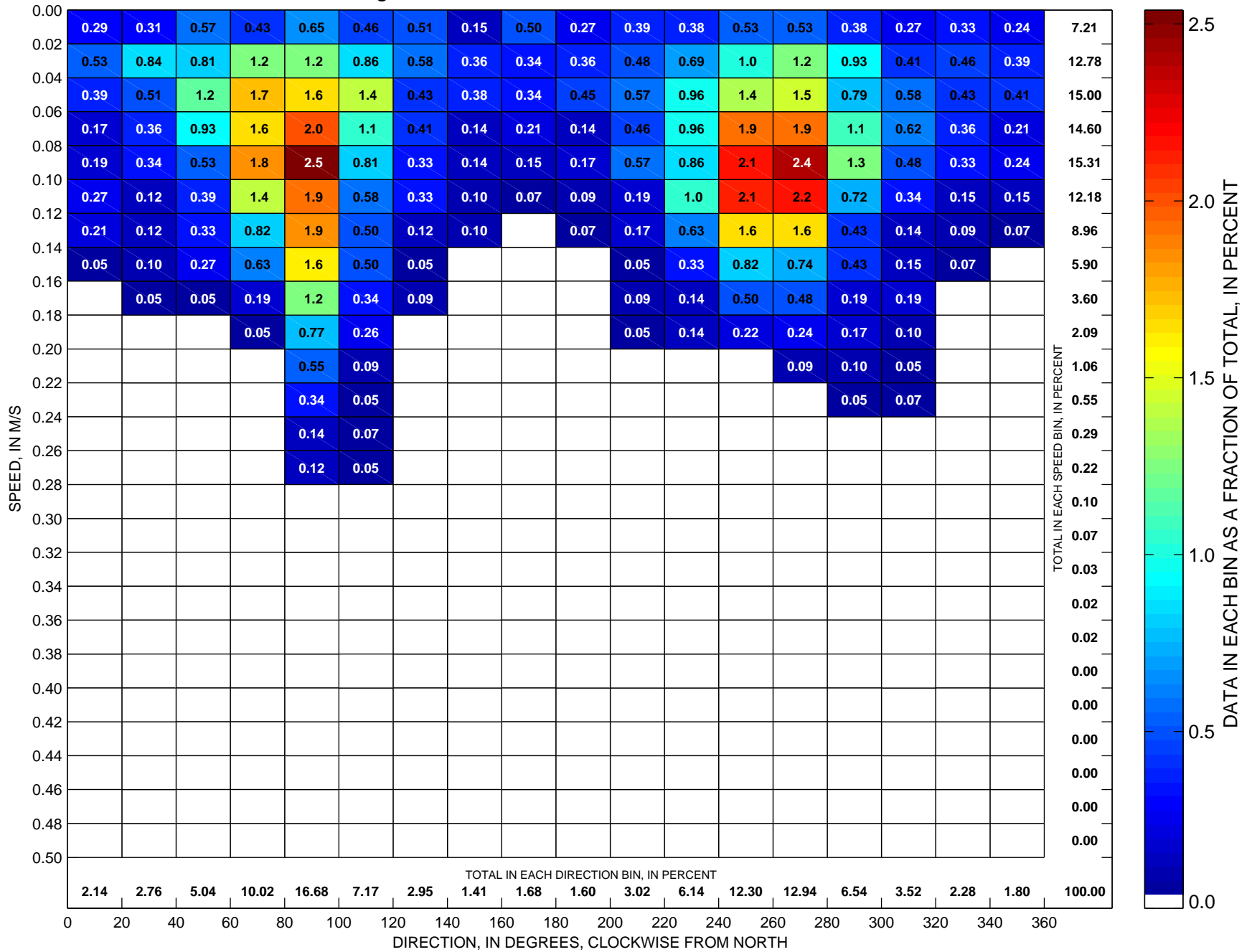
Total number of data points sorted is 7051, which is 80 percent of possible observations made during the full year.

### Currents at LT-A Sorted by Speed and Direction Hour-Averaged Point Current-Meter Observations at ~22 m, 1991



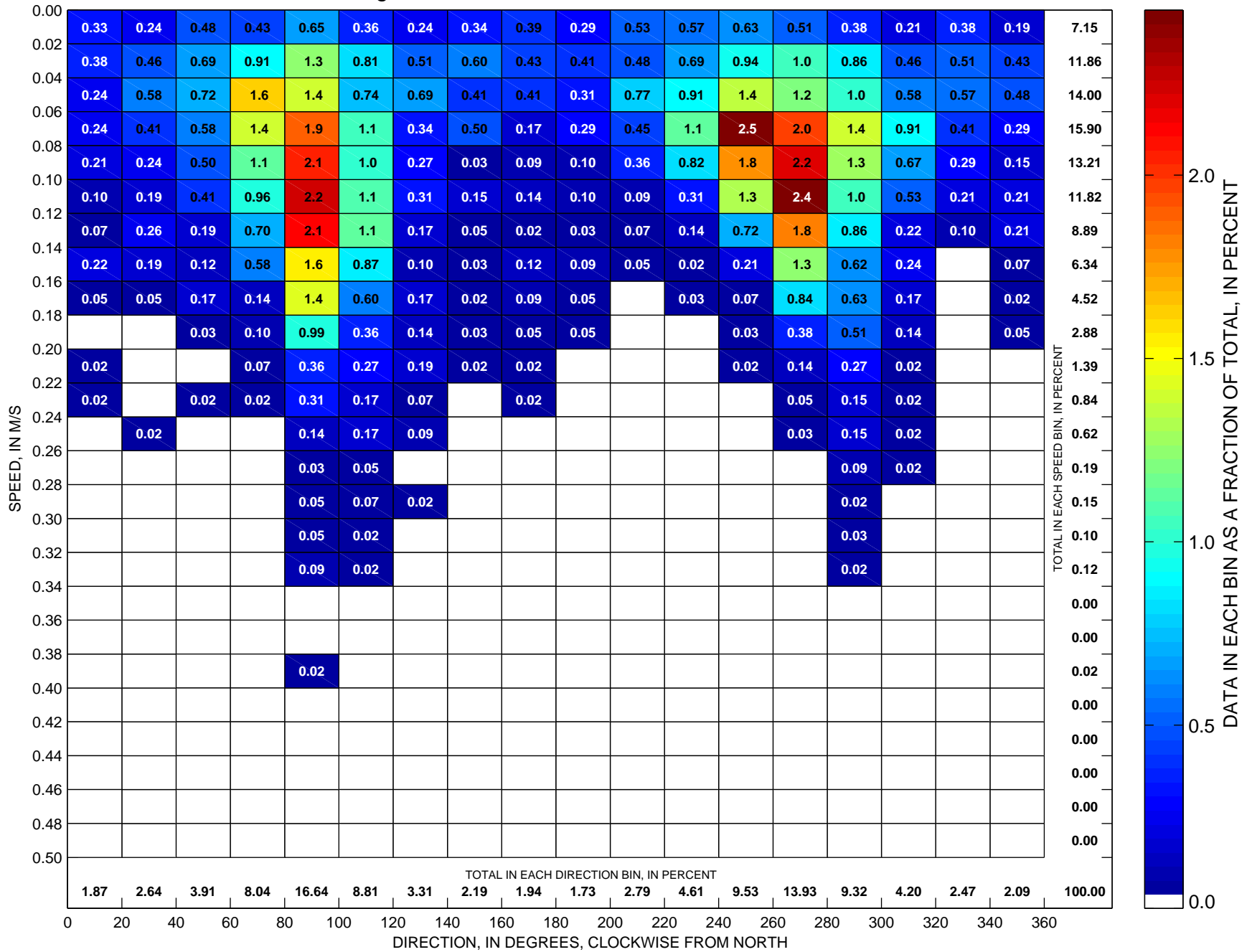
Total number of data points sorted is 7404, which is 85 percent of possible observations made during the full year.

### Currents at LT-A Sorted by Speed and Direction Hour-Averaged Point Current-Meter Observations at ~22 m, 1992



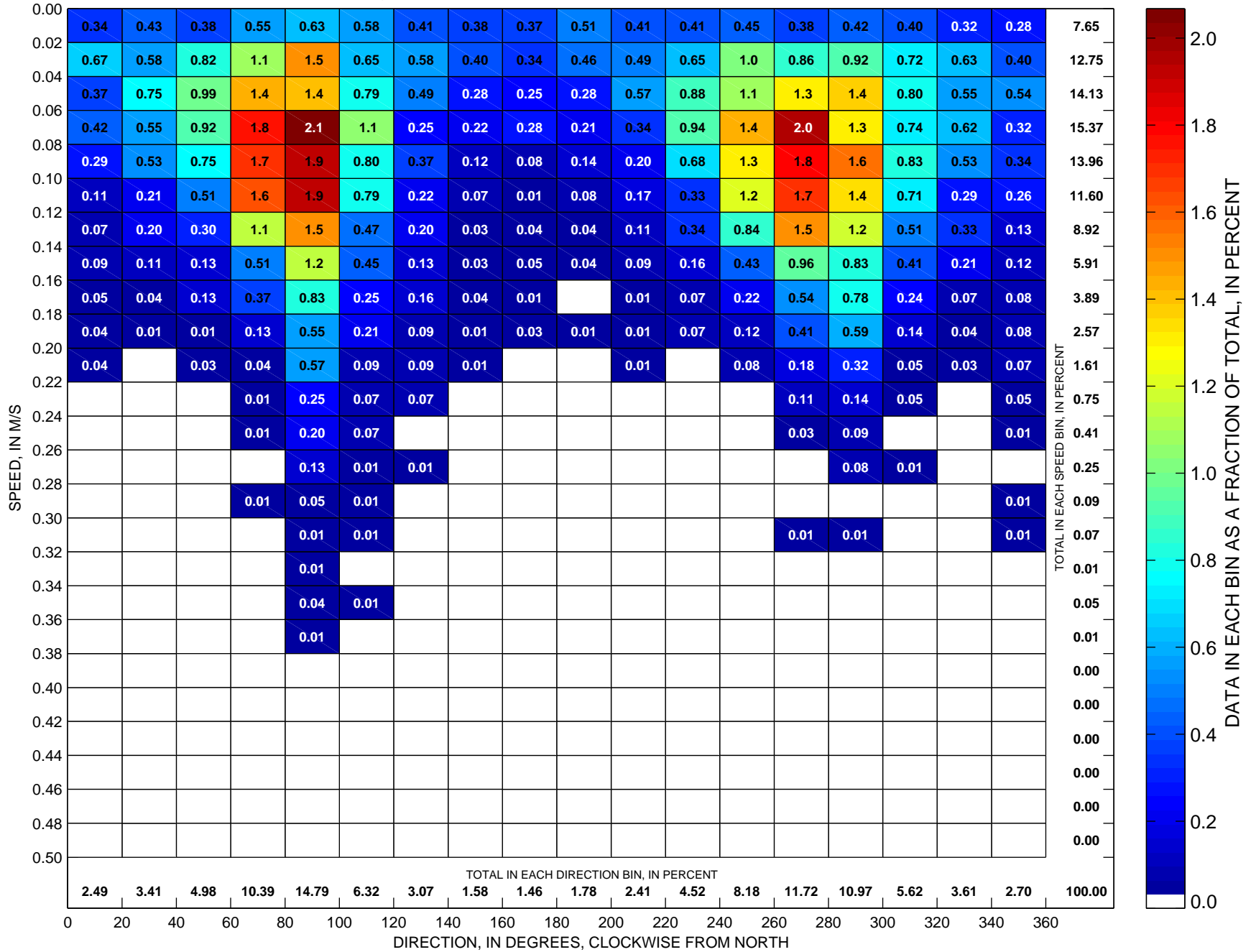
Total number of data points sorted is 5828, which is 66 percent of possible observations made during the full year.

### Currents at LT-A Sorted by Speed and Direction Hour-Averaged Point Current-Meter Observations at ~22 m, 1993



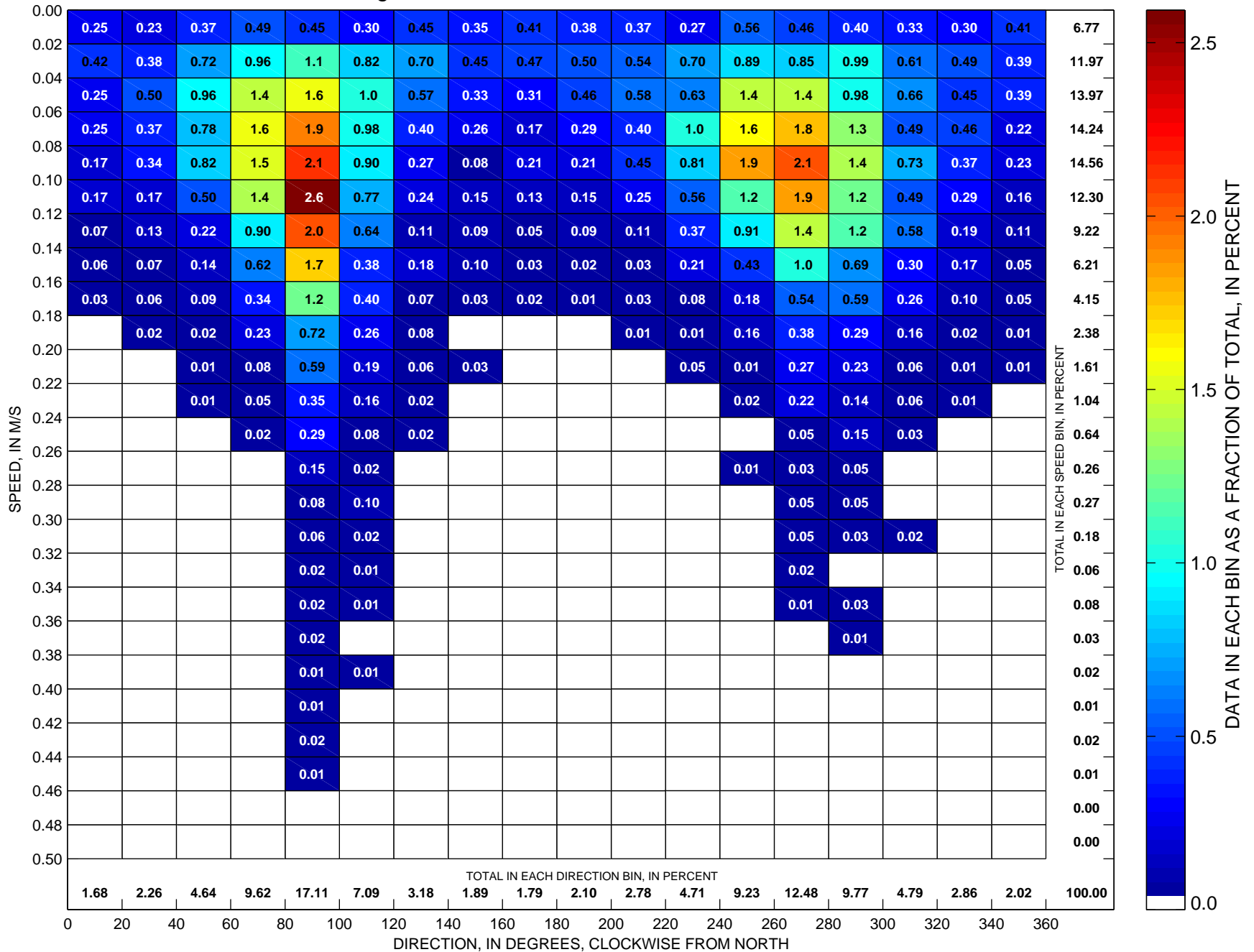
Total number of data points sorted is 5836, which is 67 percent of possible observations made during the full year.

## Currents at LT-A Sorted by Speed and Direction Hour-Averaged Point Current-Meter Observations at ~22 m, 1994



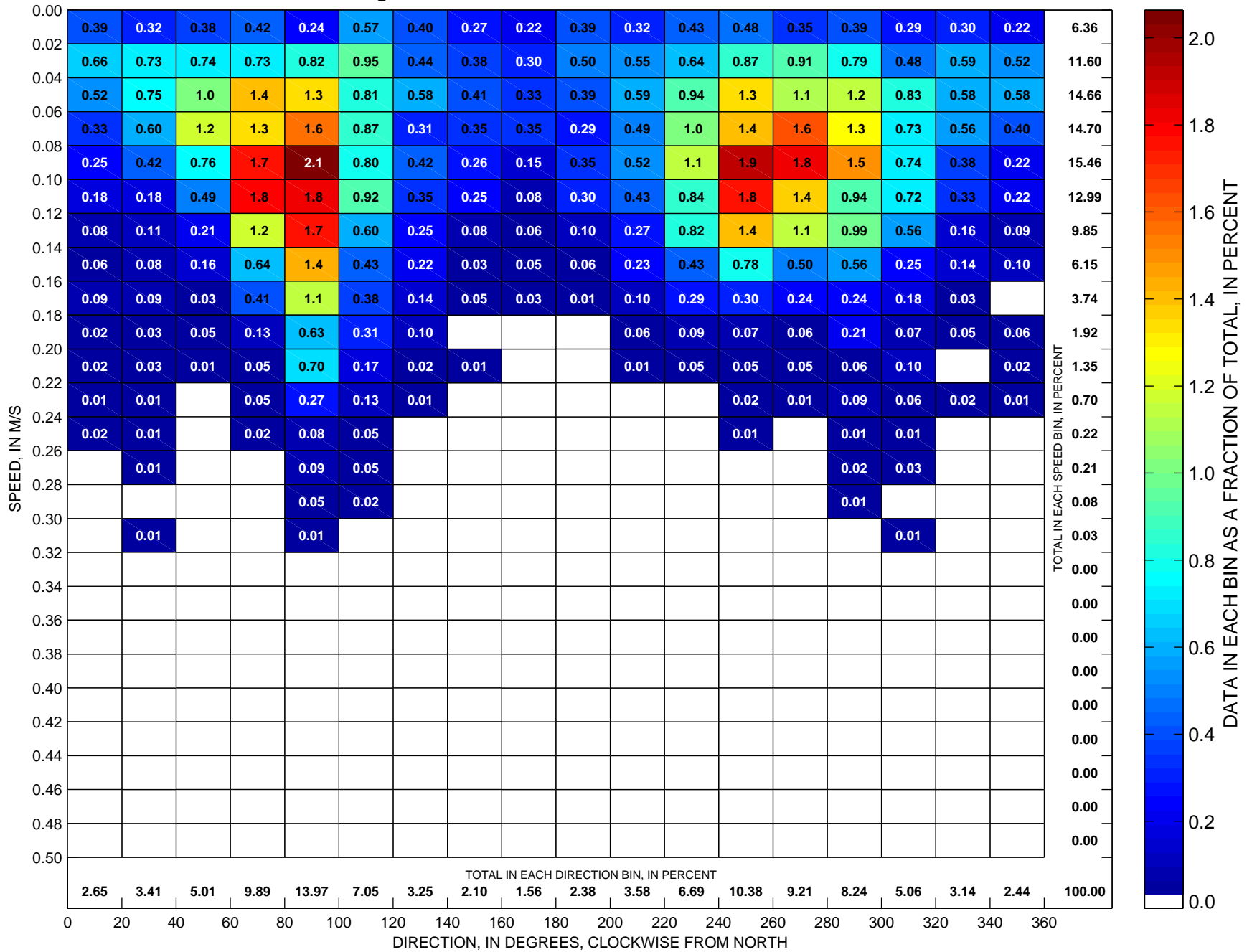
Total number of data points sorted is 7593, which is 87 percent of possible observations made during the full year.

### Currents at LT-A Sorted by Speed and Direction Hour-Averaged Point Current-Meter Observations at ~22 m, 1995



Total number of data points sorted is 8750, which is 100 percent of possible observations made during the full year.

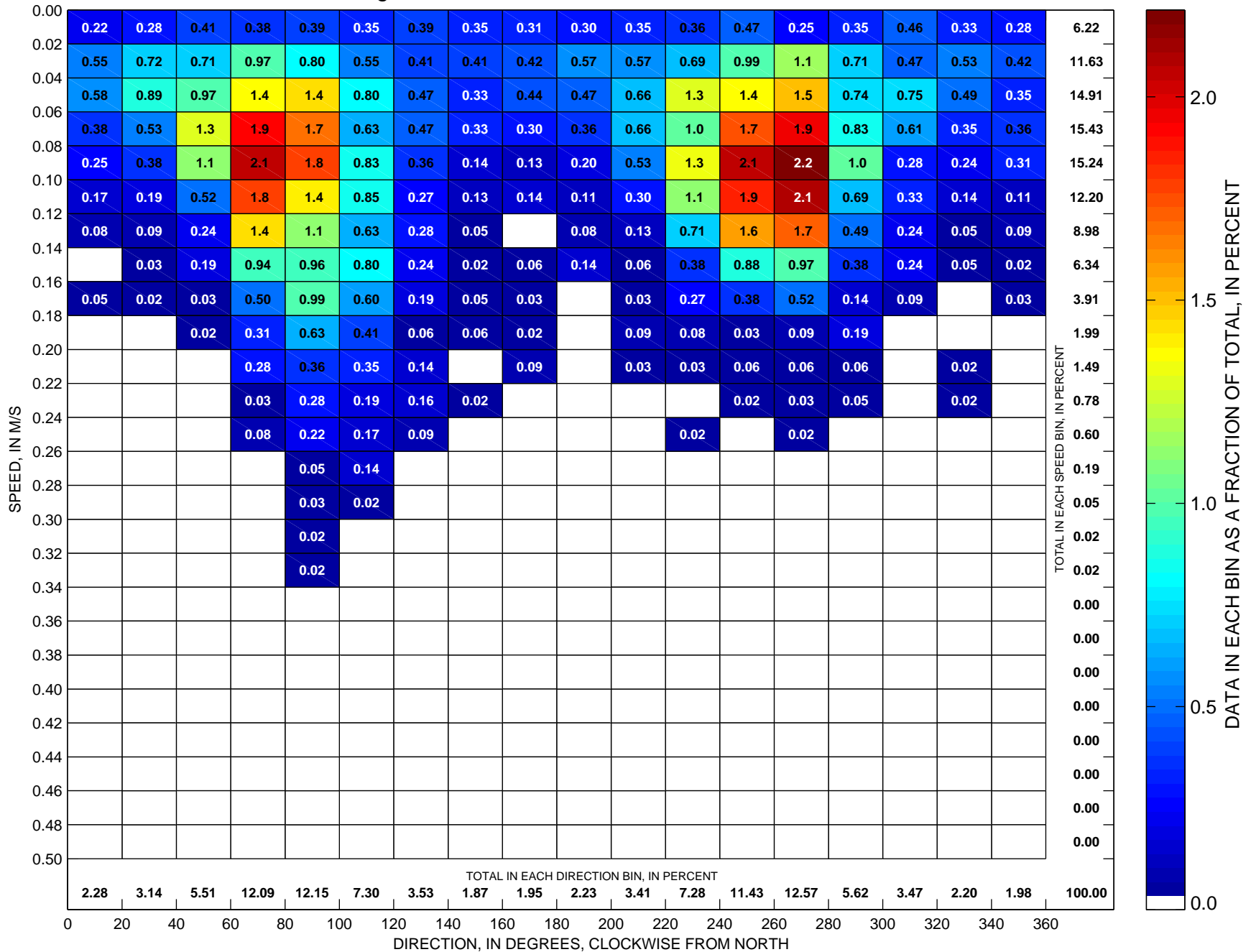
### Currents at LT-A Sorted by Speed and Direction Hour-Averaged Point Current-Meter Observations at ~22 m, 1996



Total number of data points sorted is 8770, which is 100 percent of possible observations made during the full year.

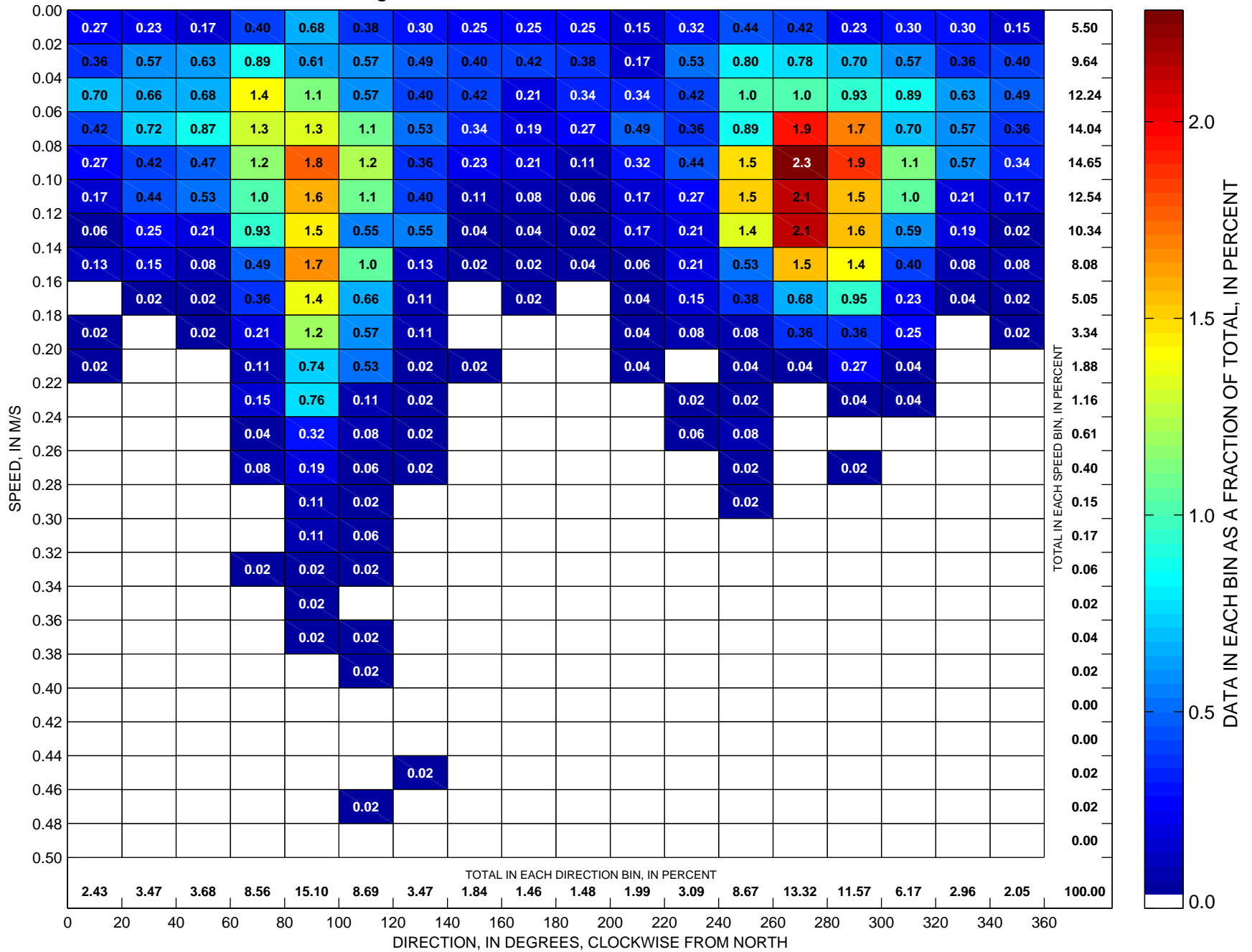


### Currents at LT-A Sorted by Speed and Direction Hour-Averaged Point Current-Meter Observations at ~22 m, 1997



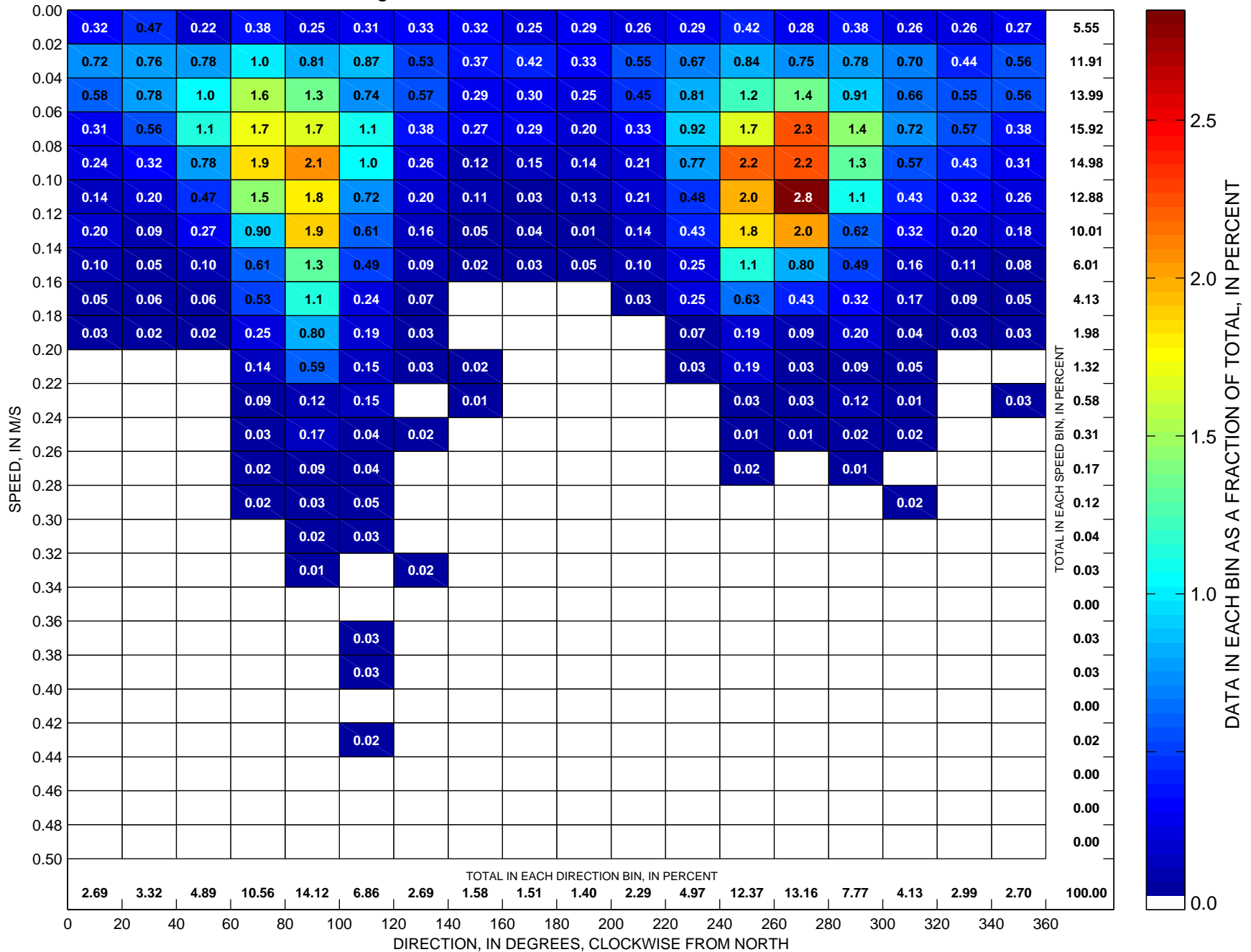
Total number of data points sorted is 6370, which is 73 percent of possible observations made during the full year.

### Currents at LT-A Sorted by Speed and Direction Hour-Averaged Point Current-Meter Observations at ~22 m, 1998



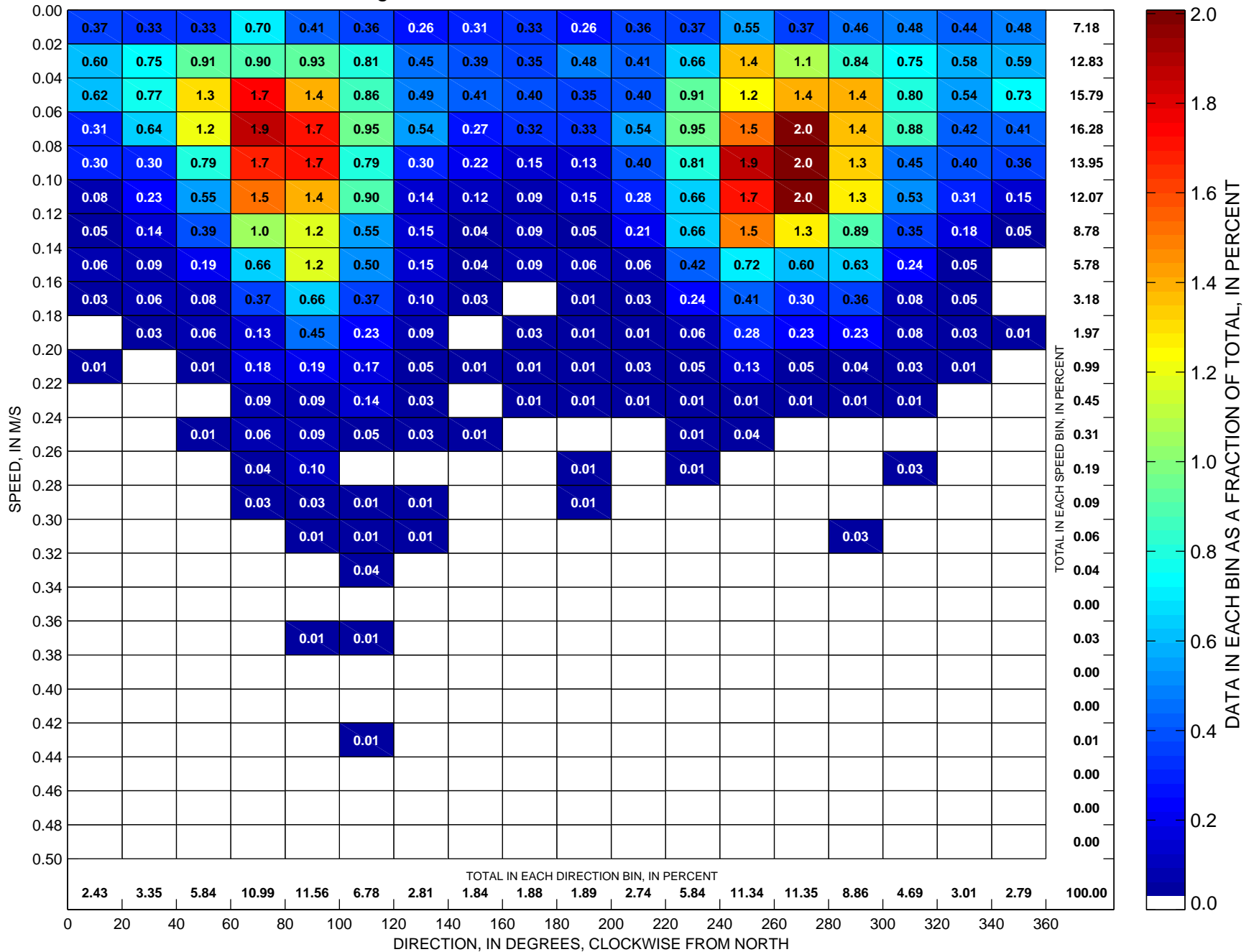
Total number of data points sorted is 4729, which is 54 percent of possible observations made during the full year.

### Currents at LT-A Sorted by Speed and Direction Hour-Averaged Point Current-Meter Observations at ~22 m, 1999



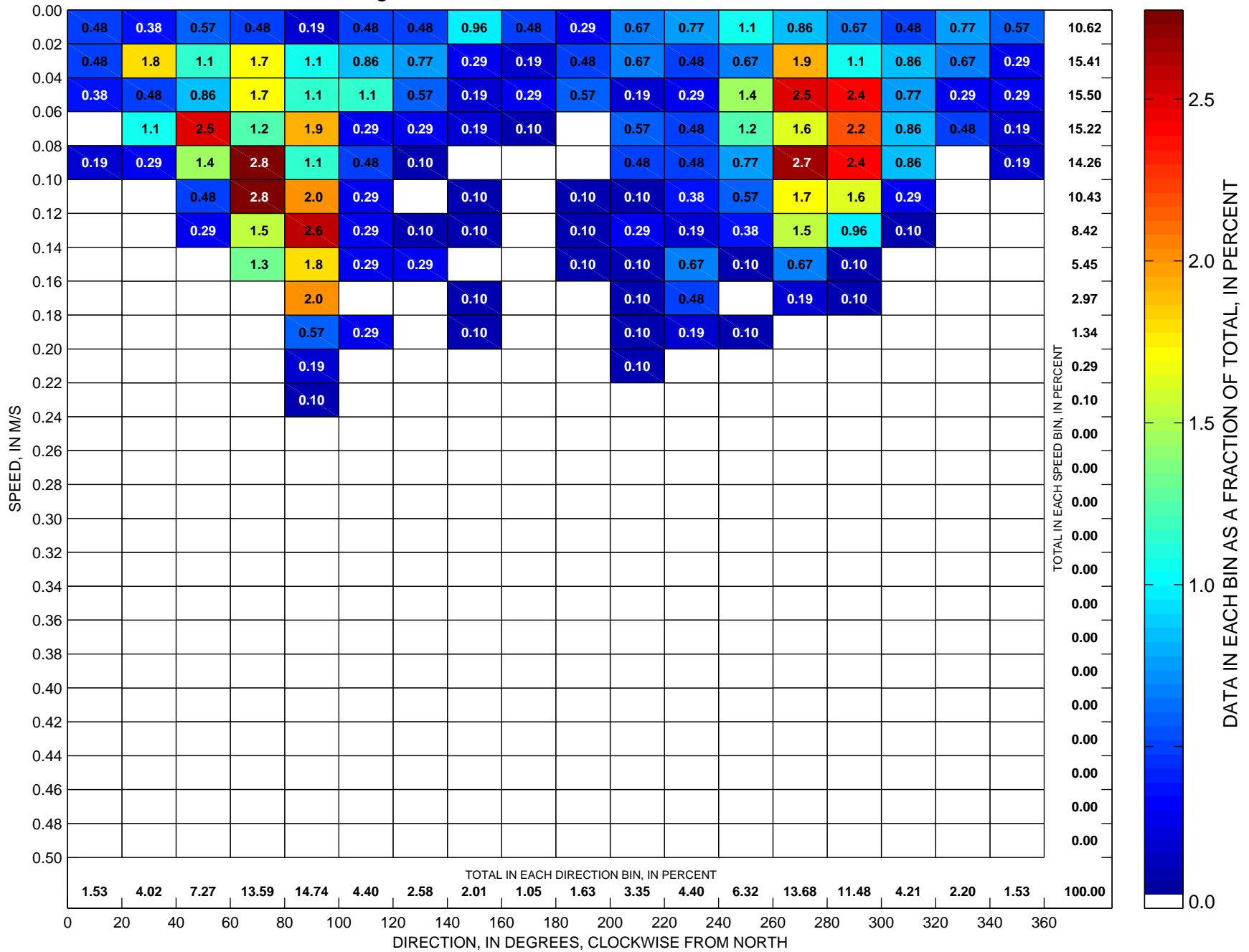
Total number of data points sorted is 11726, which is 134 percent of possible observations made during the full year.

### Currents at LT-A Sorted by Speed and Direction Hour-Averaged Point Current-Meter Observations at ~22 m, 2000



Total number of data points sorted is 7769, which is 89 percent of possible observations made during the full year.

### Currents at LT-A Sorted by Speed and Direction Hour-Averaged Point Current-Meter Observations at ~22 m, 2001



Total number of data points sorted is 1045, which is 12 percent of possible observations made during the full year.