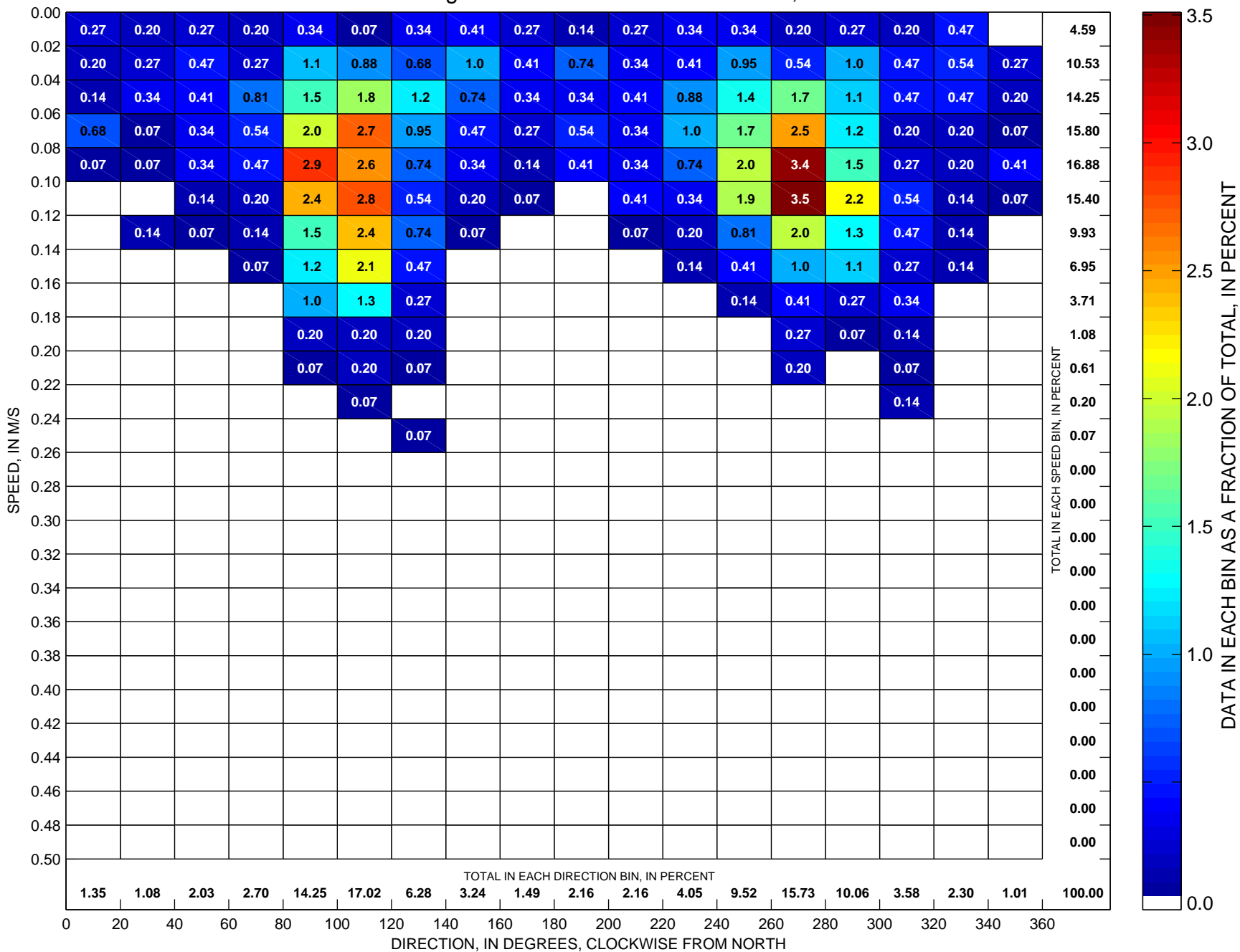
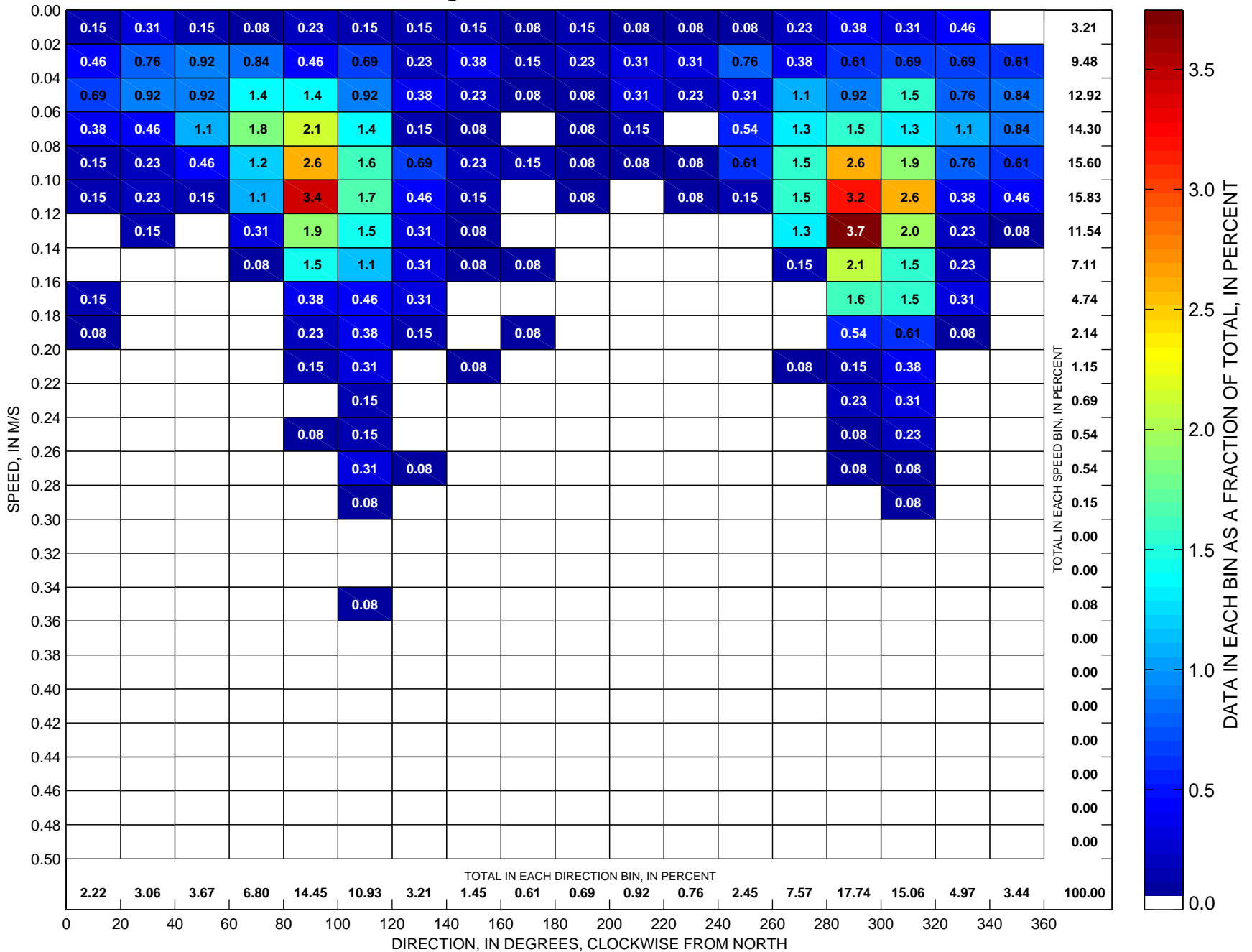


Currents at LT-A Sorted by Speed and Direction Hour-Averaged ADCP Observations at ~22 m, 1995



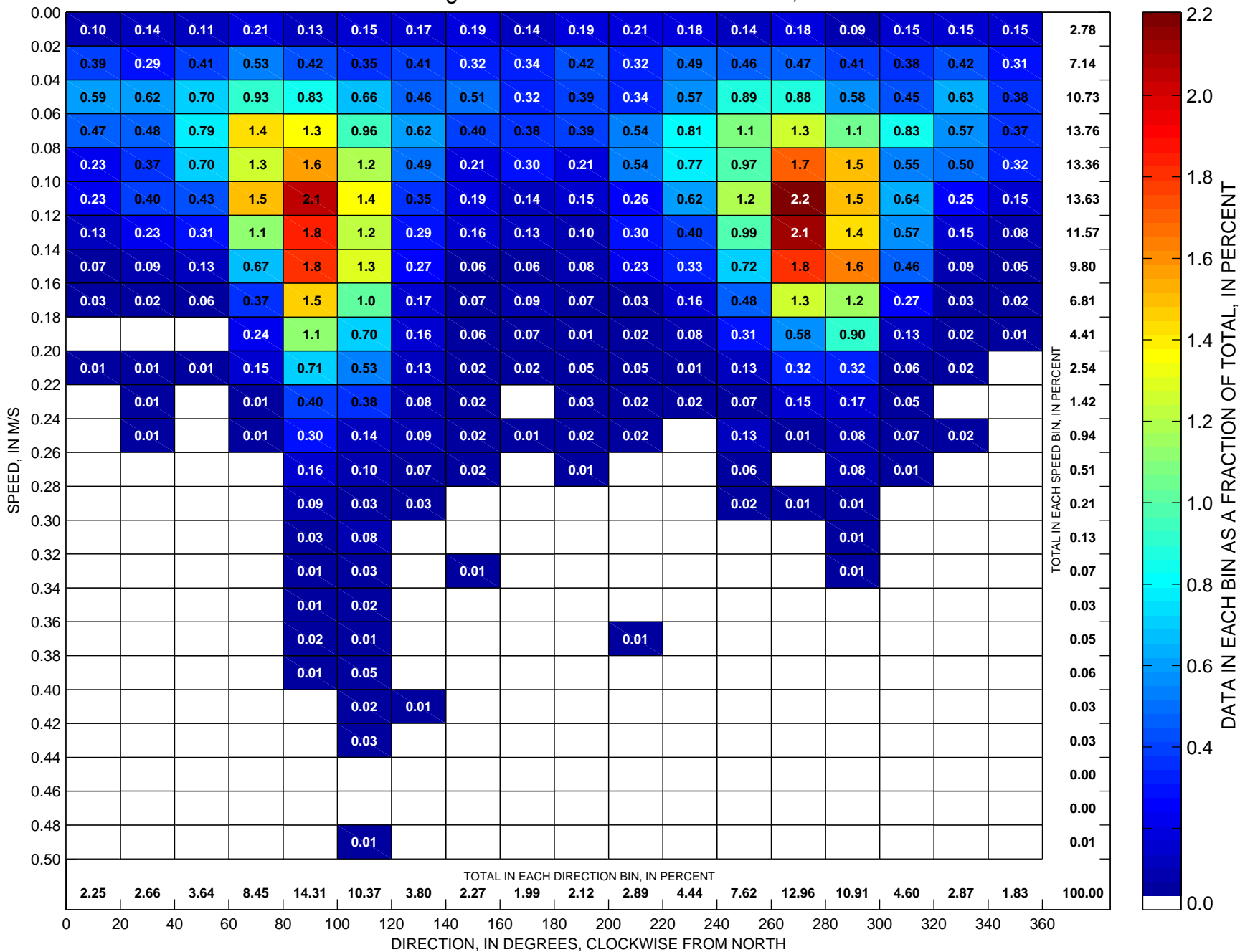
Total number of data points sorted is 1481, which is 17 percent of possible observations made during the full year.

Currents at LT-A Sorted by Speed and Direction Hour-Averaged ADCP Observations at ~22 m, 1996



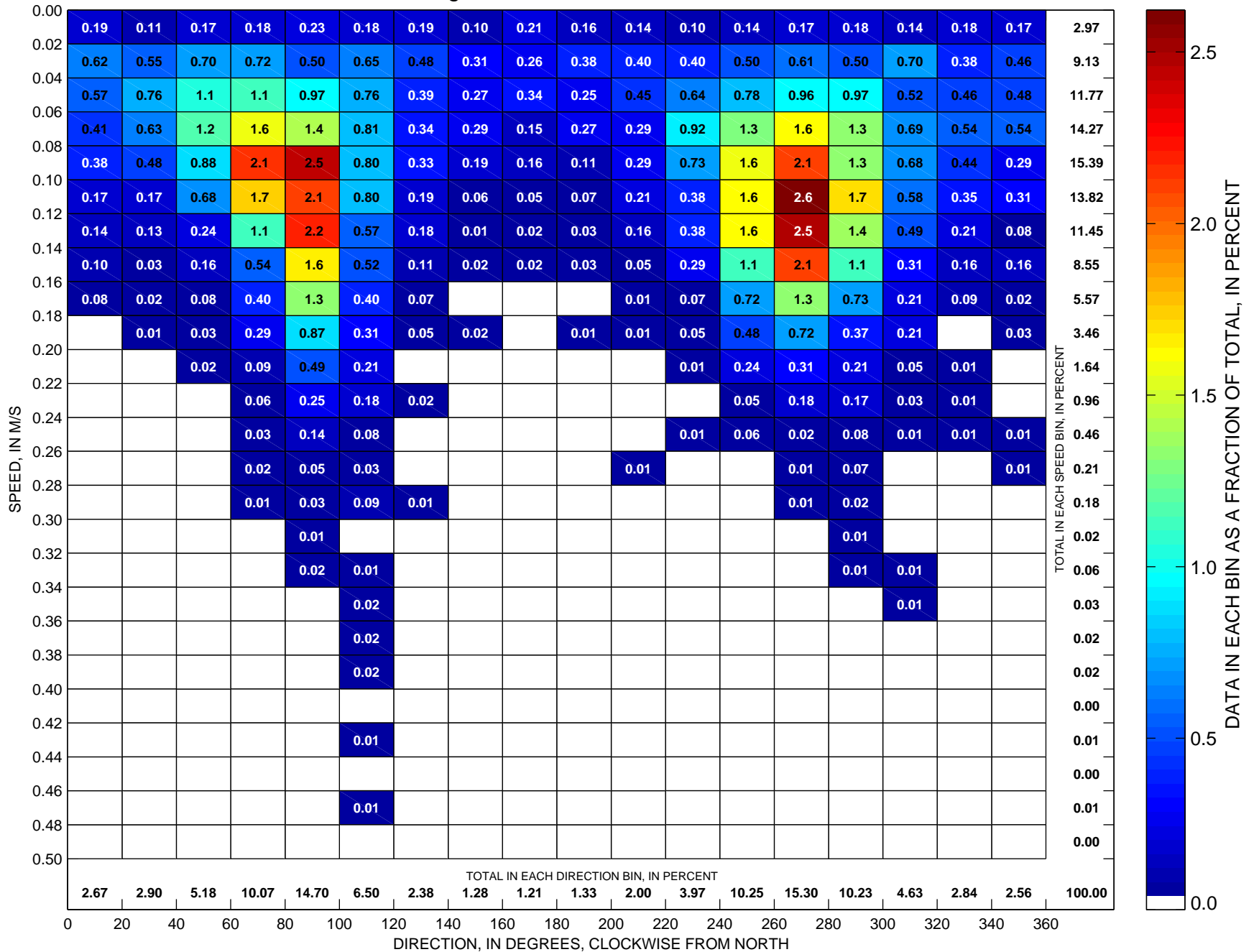
Total number of data points sorted is 1308, which is 15 percent of possible observations made during the full year.

Currents at LT-A Sorted by Speed and Direction Hour-Averaged ADCP Observations at ~22 m, 1998



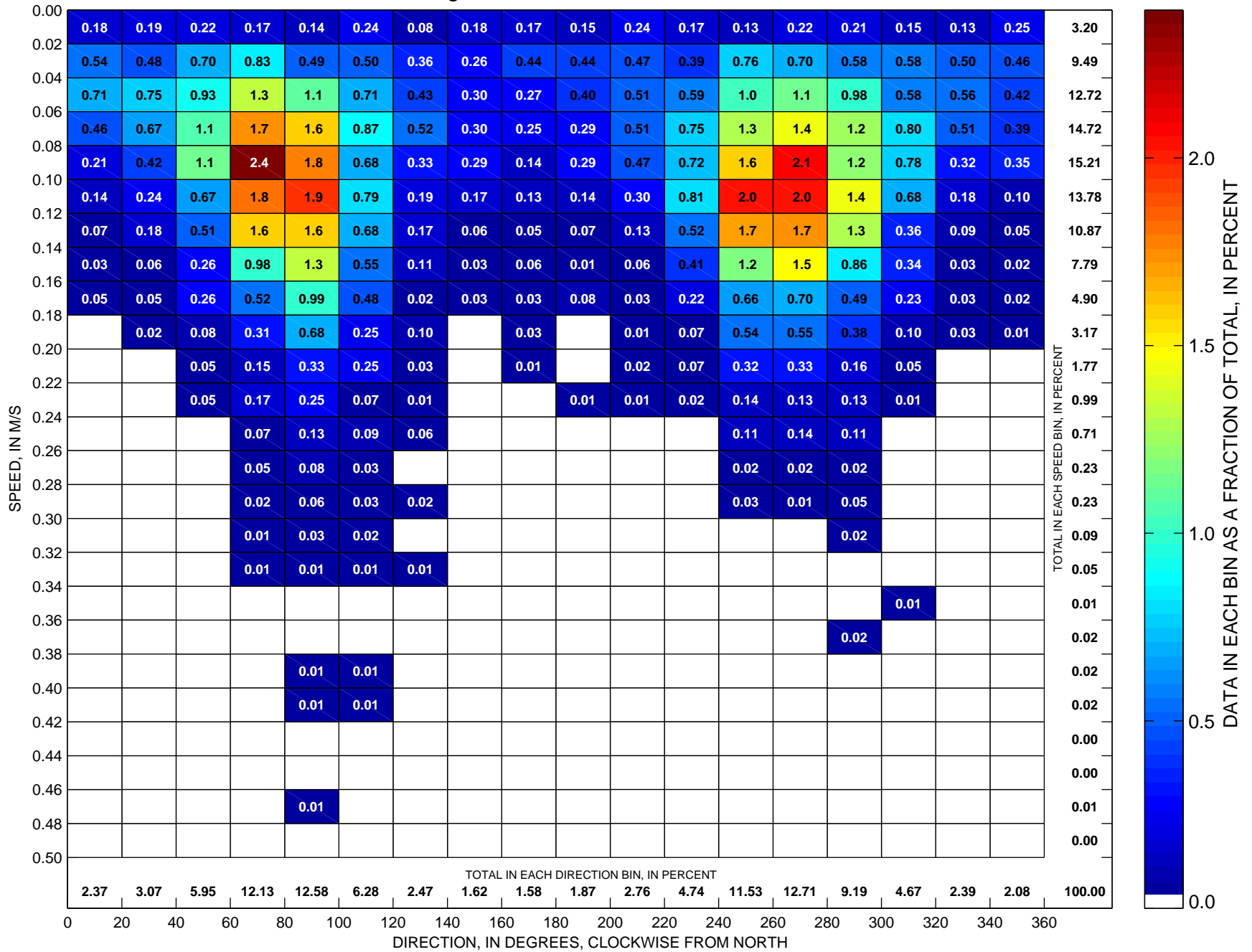
Total number of data points sorted is 8755, which is 100 percent of possible observations made during the full year.

Currents at LT-A Sorted by Speed and Direction Hour-Averaged ADCP Observations at ~22 m, 1999



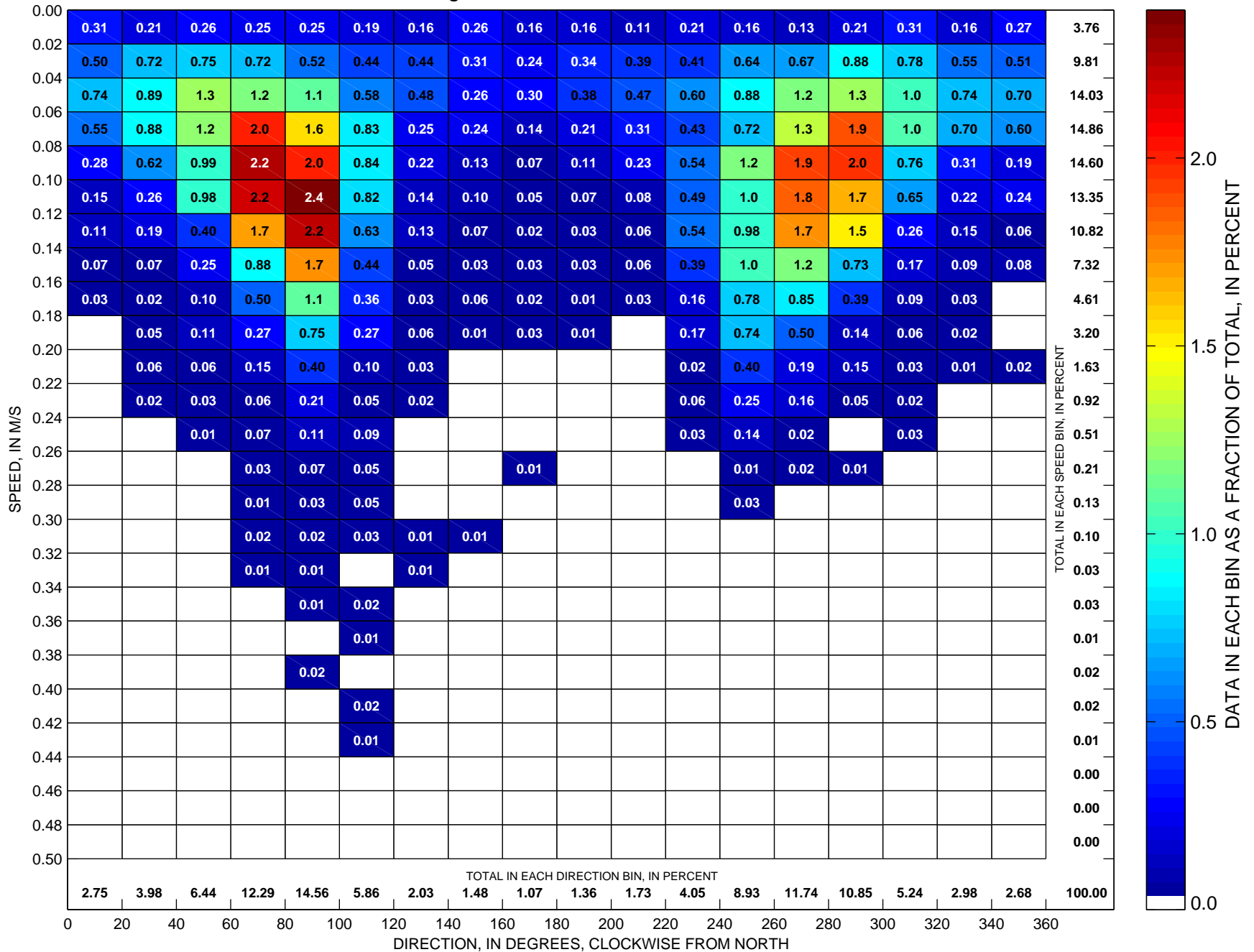
Total number of data points sorted is 8733, which is 100 percent of possible observations made during the full year.

Currents at LT-A Sorted by Speed and Direction Hour-Averaged ADCP Observations at ~22 m, 2000



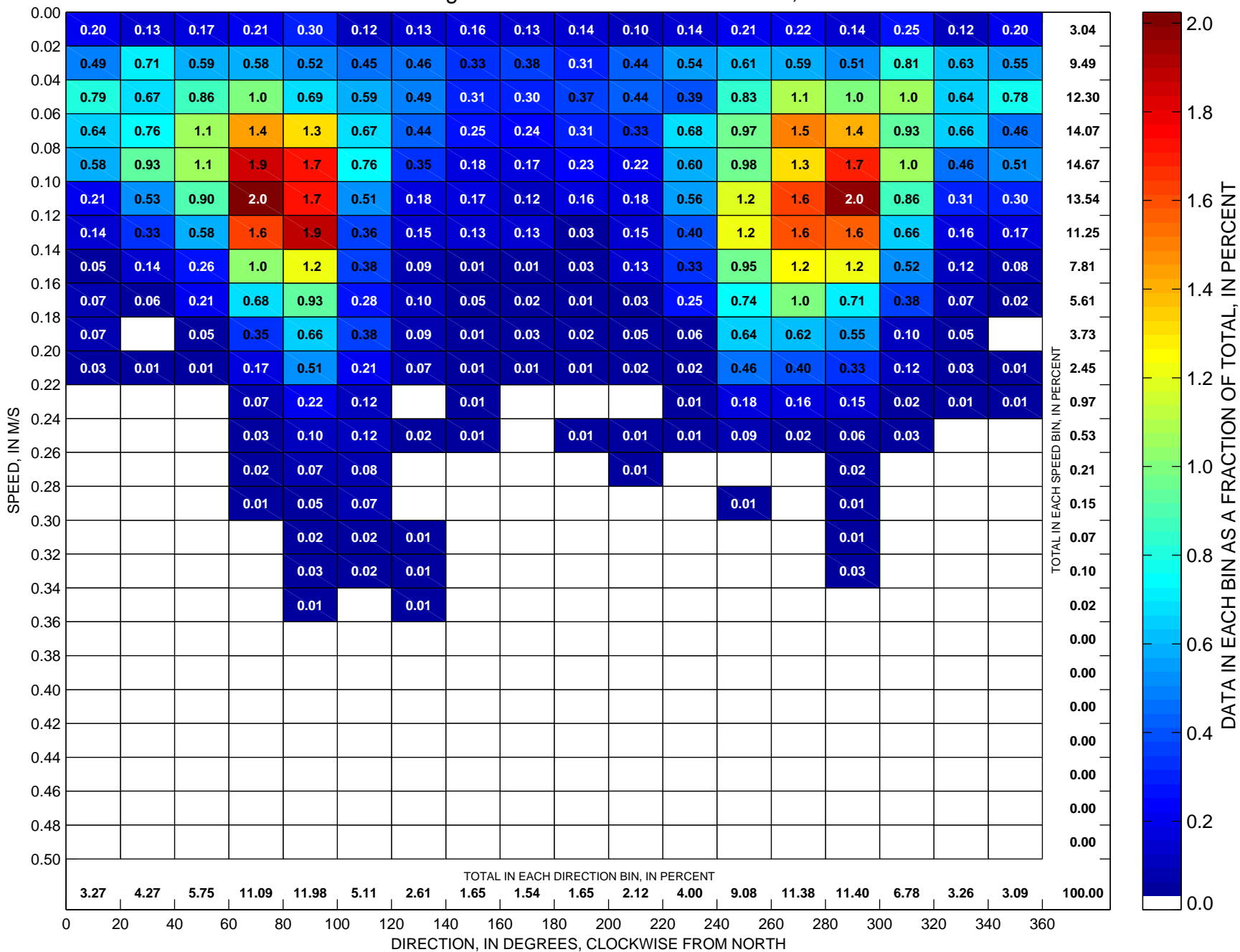
Total number of data points sorted is 8771, which is 100 percent of possible observations made during the full year.

Currents at LT-A Sorted by Speed and Direction Hour-Averaged ADCP Observations at ~22 m, 2001



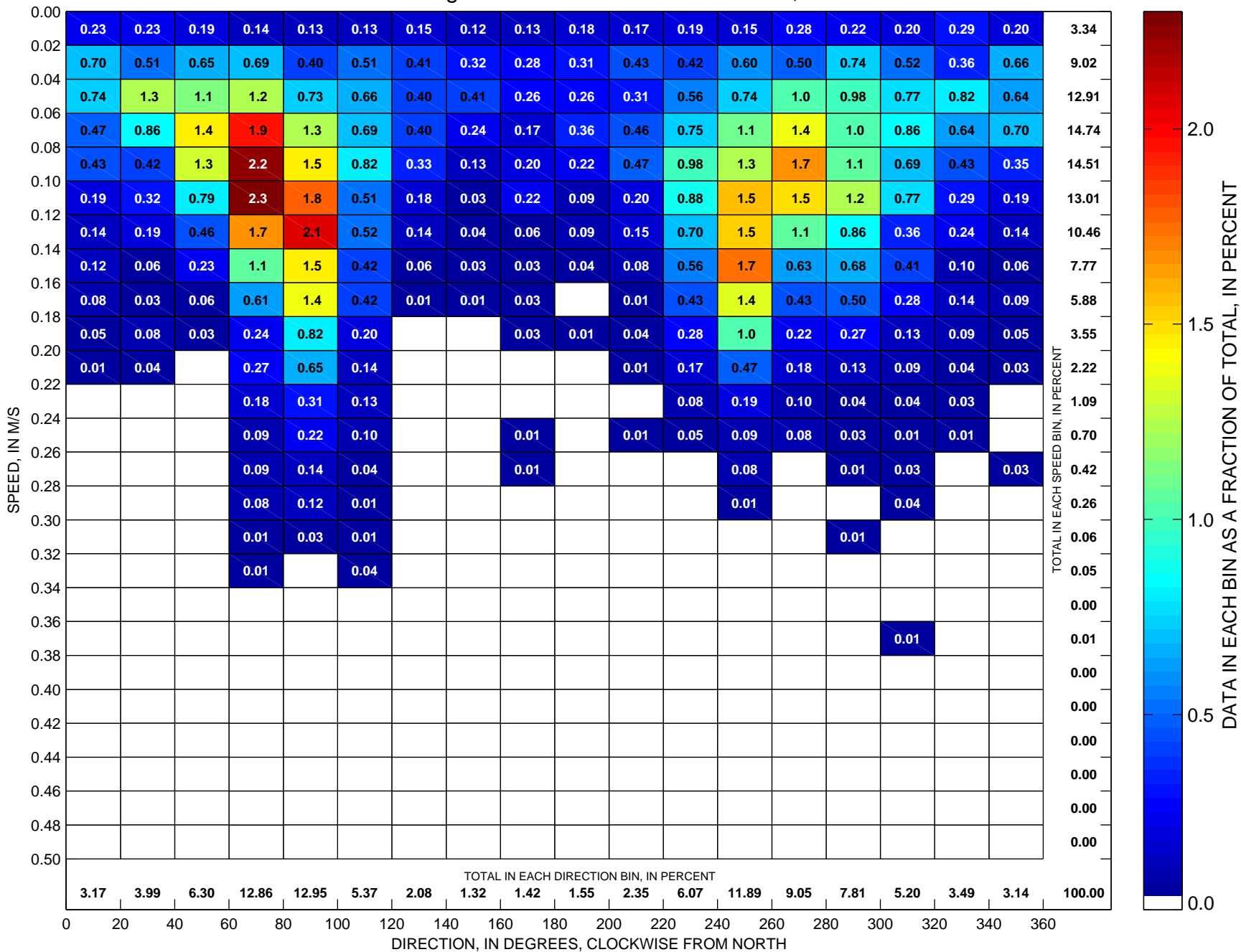
Total number of data points sorted is 8773, which is 100 percent of possible observations made during the full year.

Currents at LT-A Sorted by Speed and Direction Hour-Averaged ADCP Observations at ~22 m, 2002



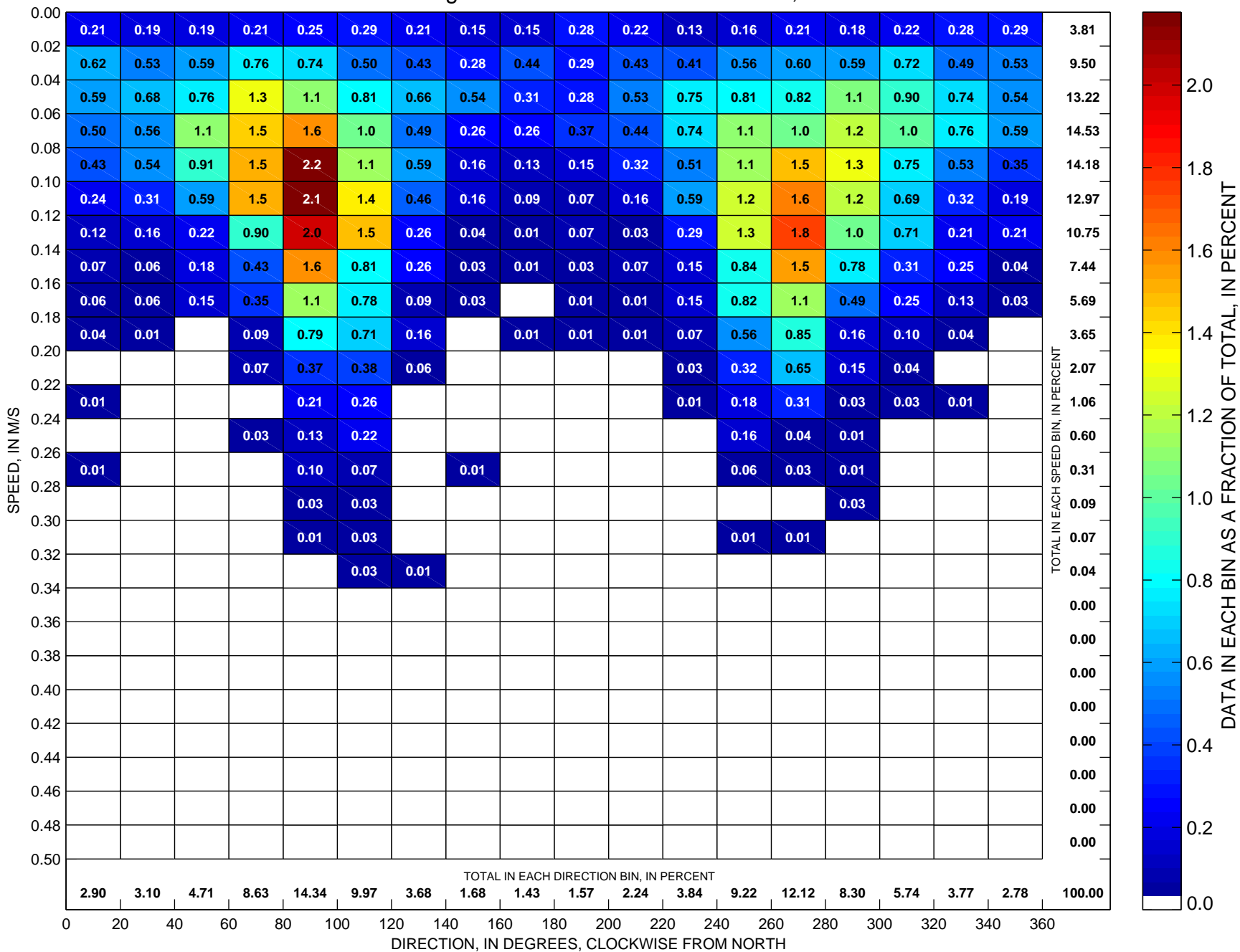
Total number of data points sorted is 8693, which is 99 percent of possible observations made during the full year.

Currents at LT-A Sorted by Speed and Direction Hour-Averaged ADCP Observations at ~22 m, 2003



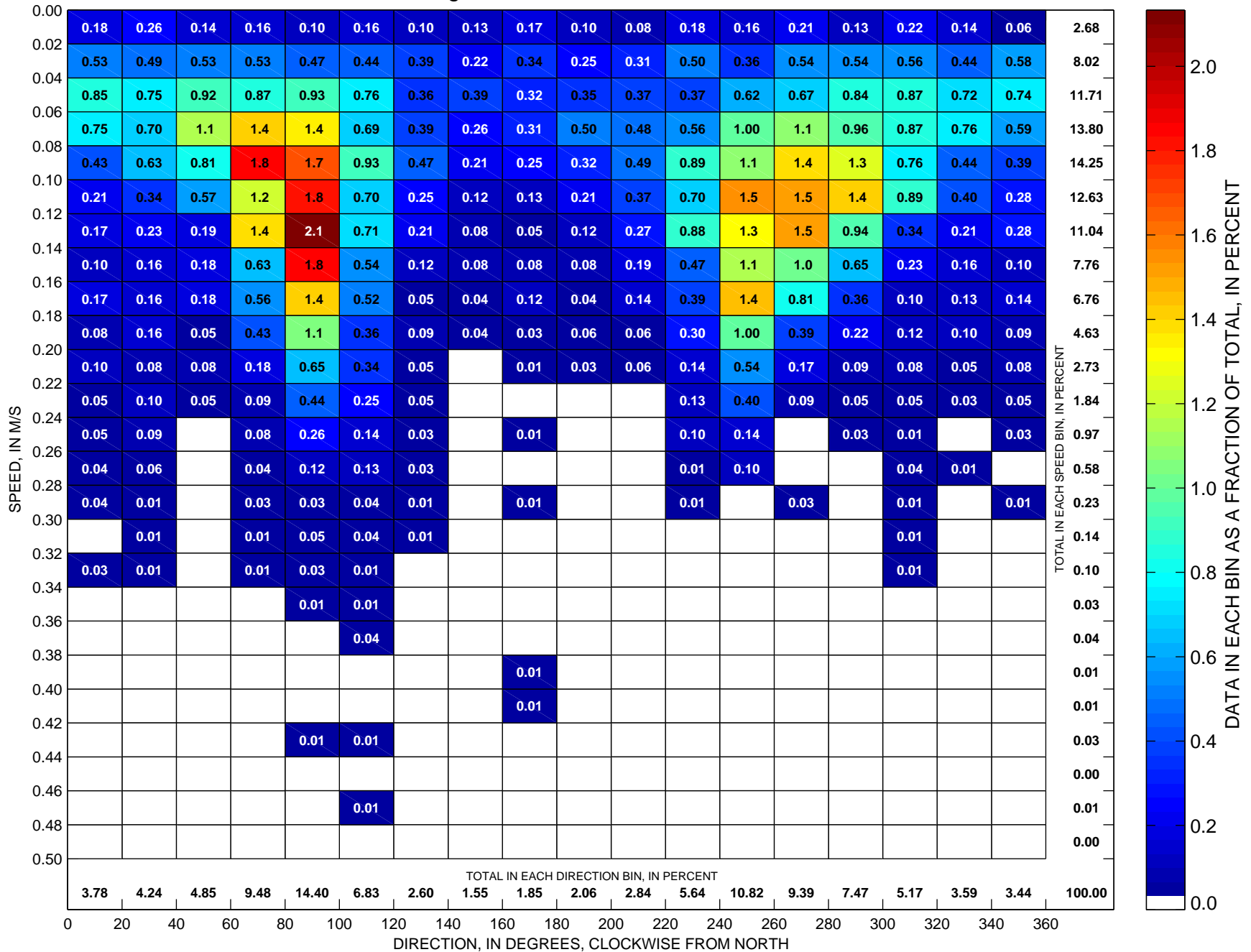
Total number of data points sorted is 7824, which is 89 percent of possible observations made during the full year.

Currents at LT-A Sorted by Speed and Direction Hour-Averaged ADCP Observations at ~22 m, 2004



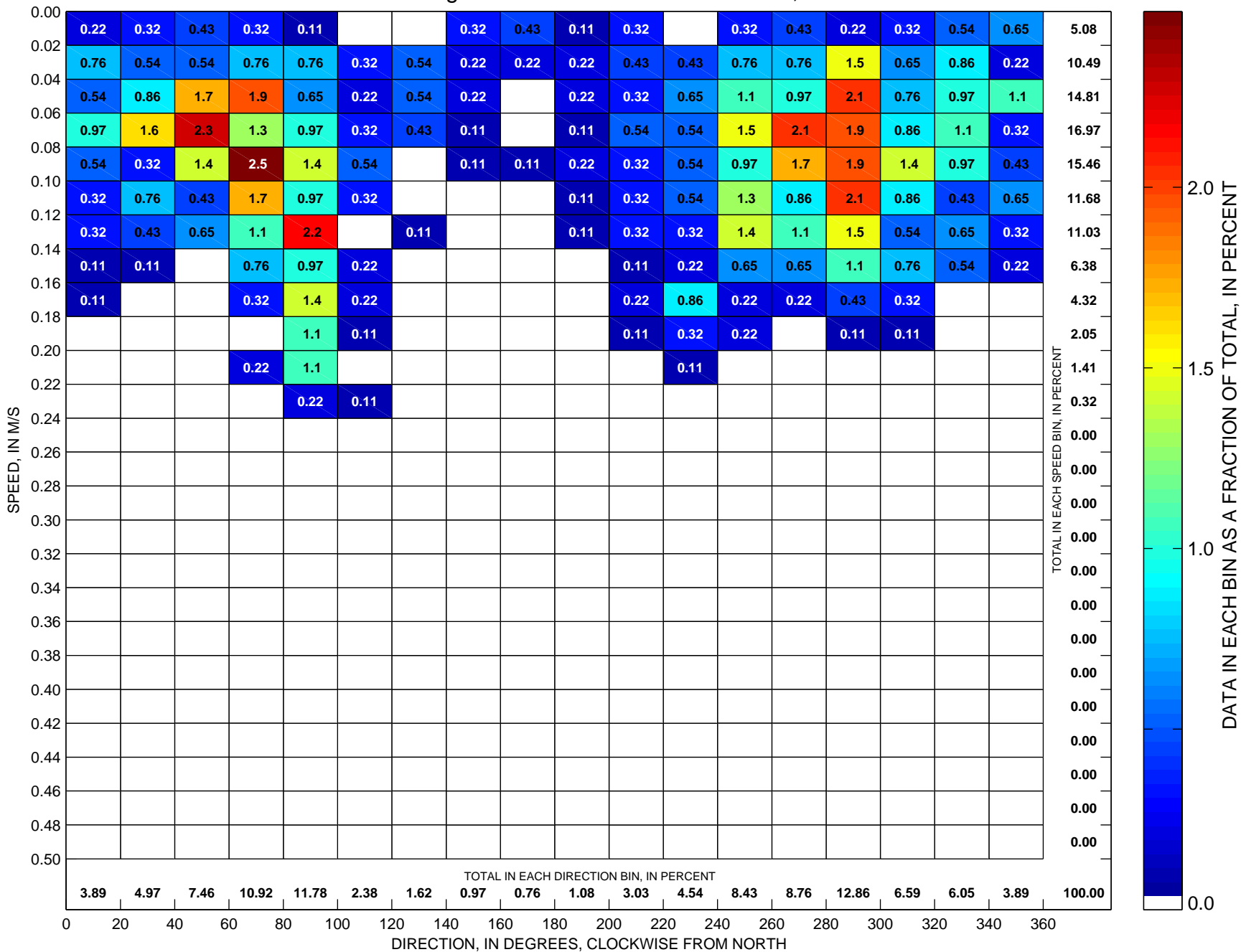
Total number of data points sorted is 6799, which is 77 percent of possible observations made during the full year.

Currents at LT-A Sorted by Speed and Direction Hour-Averaged ADCP Observations at ~22 m, 2005



Total number of data points sorted is 7734, which is 88 percent of possible observations made during the full year.

Currents at LT-A Sorted by Speed and Direction Hour-Averaged ADCP Observations at ~22 m, 2006



Total number of data points sorted is 925, which is 11 percent of possible observations made during the full year.