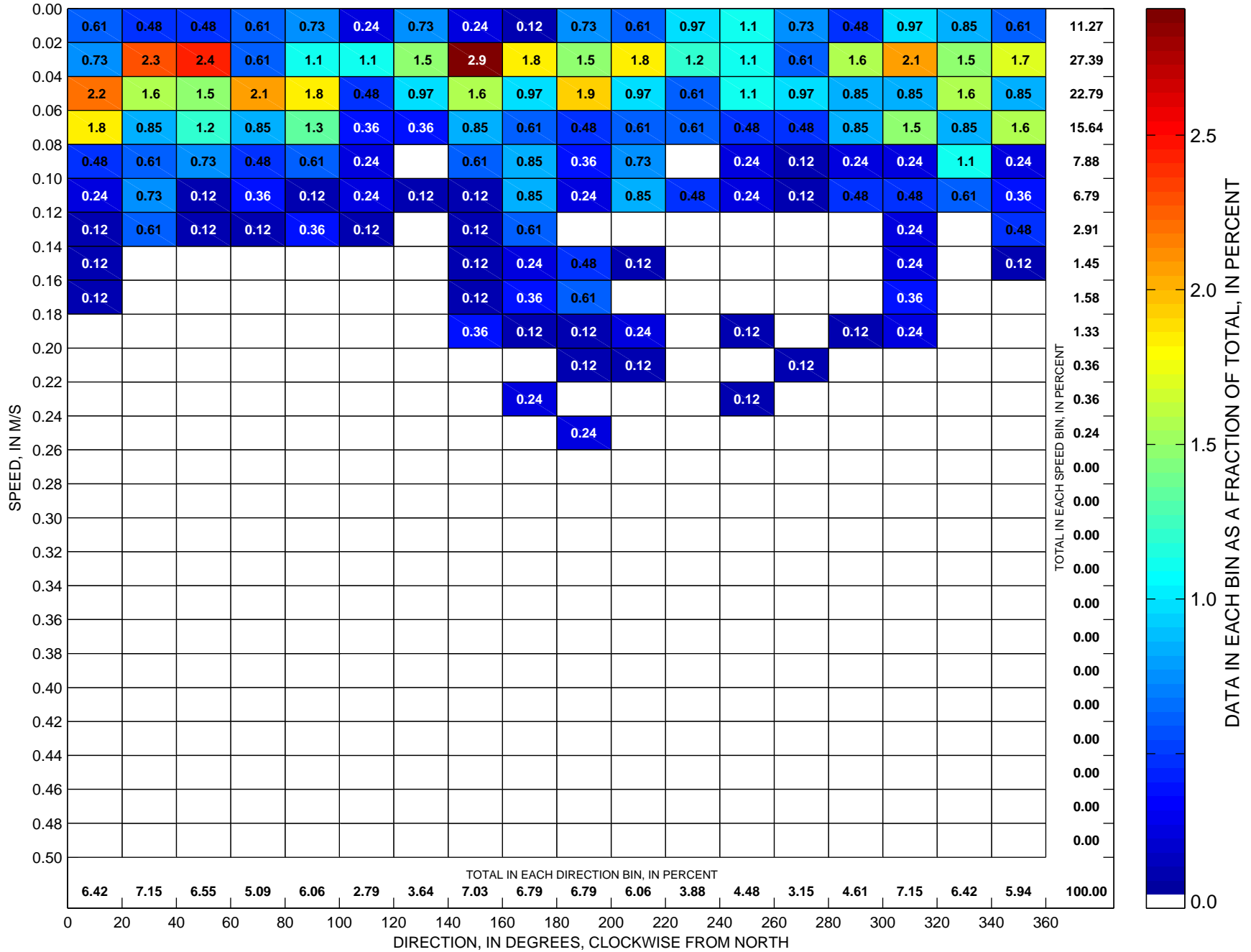
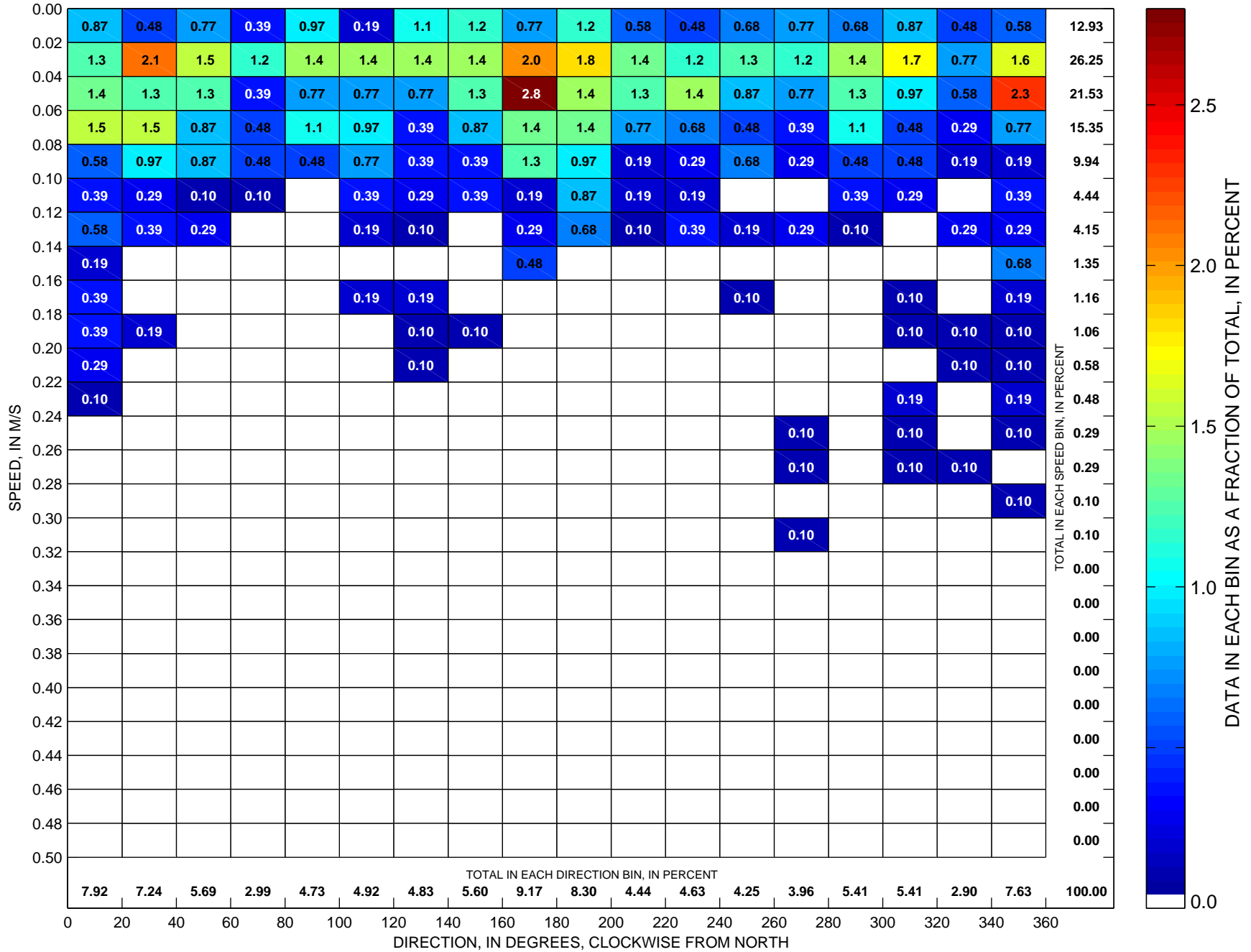


Currents at LT-A Sorted by Speed and Direction Low-Pass-Filtered Point Current-Meter Observations at ~5 m, 1990



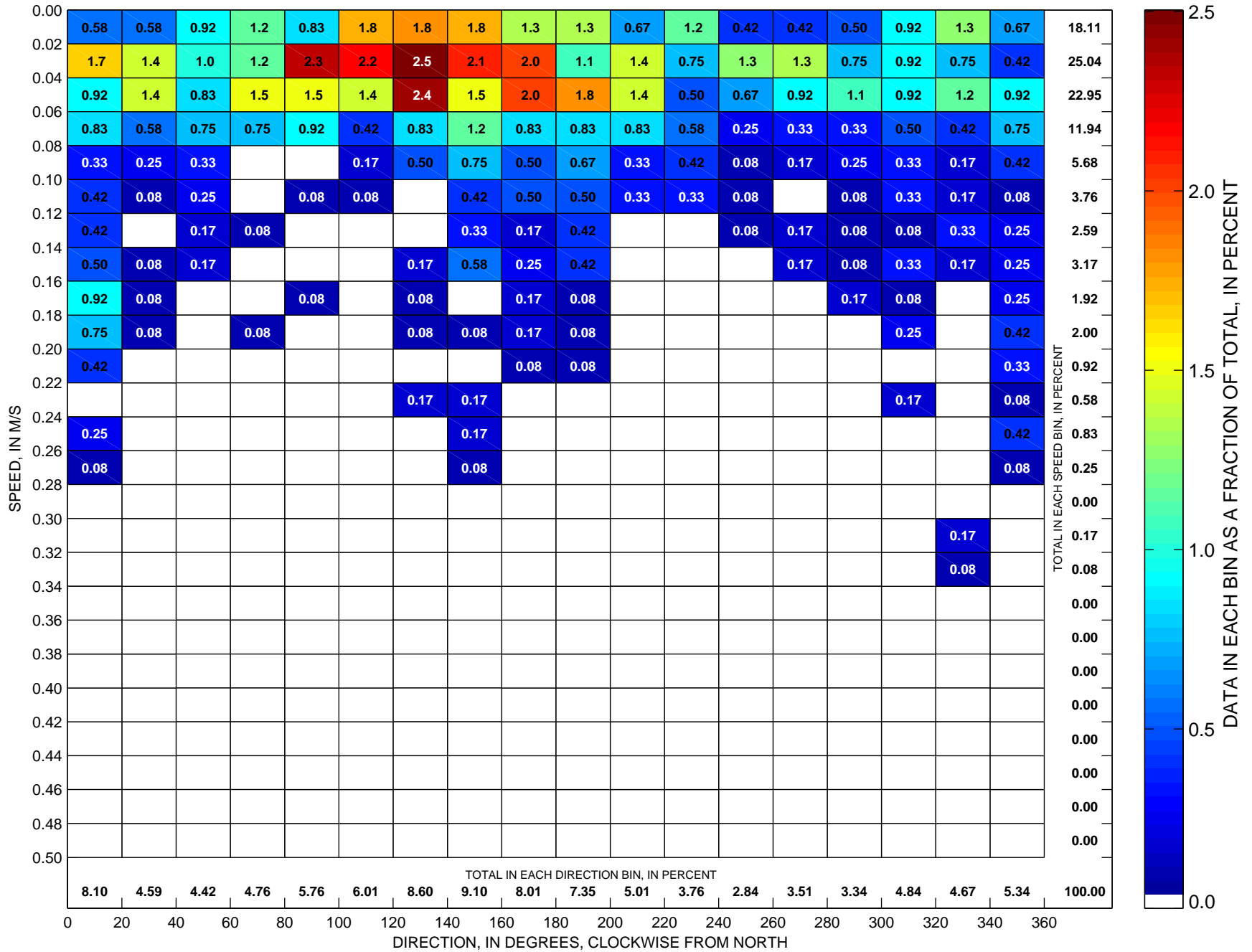
Total number of data points sorted is 825, which is 57 percent of possible observations made during the full year.

Currents at LT-A Sorted by Speed and Direction Low-Pass-Filtered Point Current-Meter Observations at ~5 m, 1991



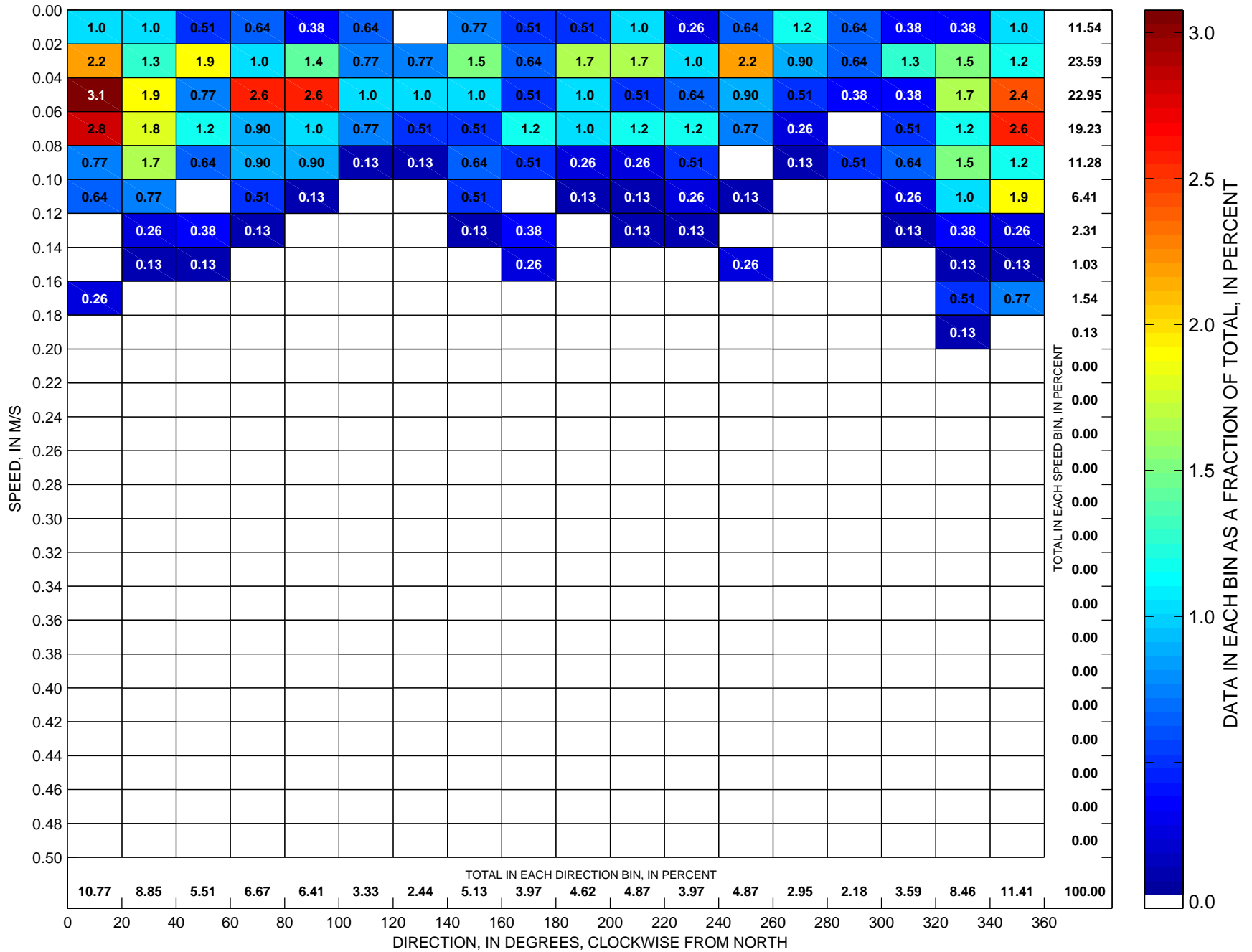
Total number of data points sorted is 1036, which is 71 percent of possible observations made during the full year.

Currents at LT-A Sorted by Speed and Direction Low-Pass-Filtered Point Current-Meter Observations at ~5 m, 1992



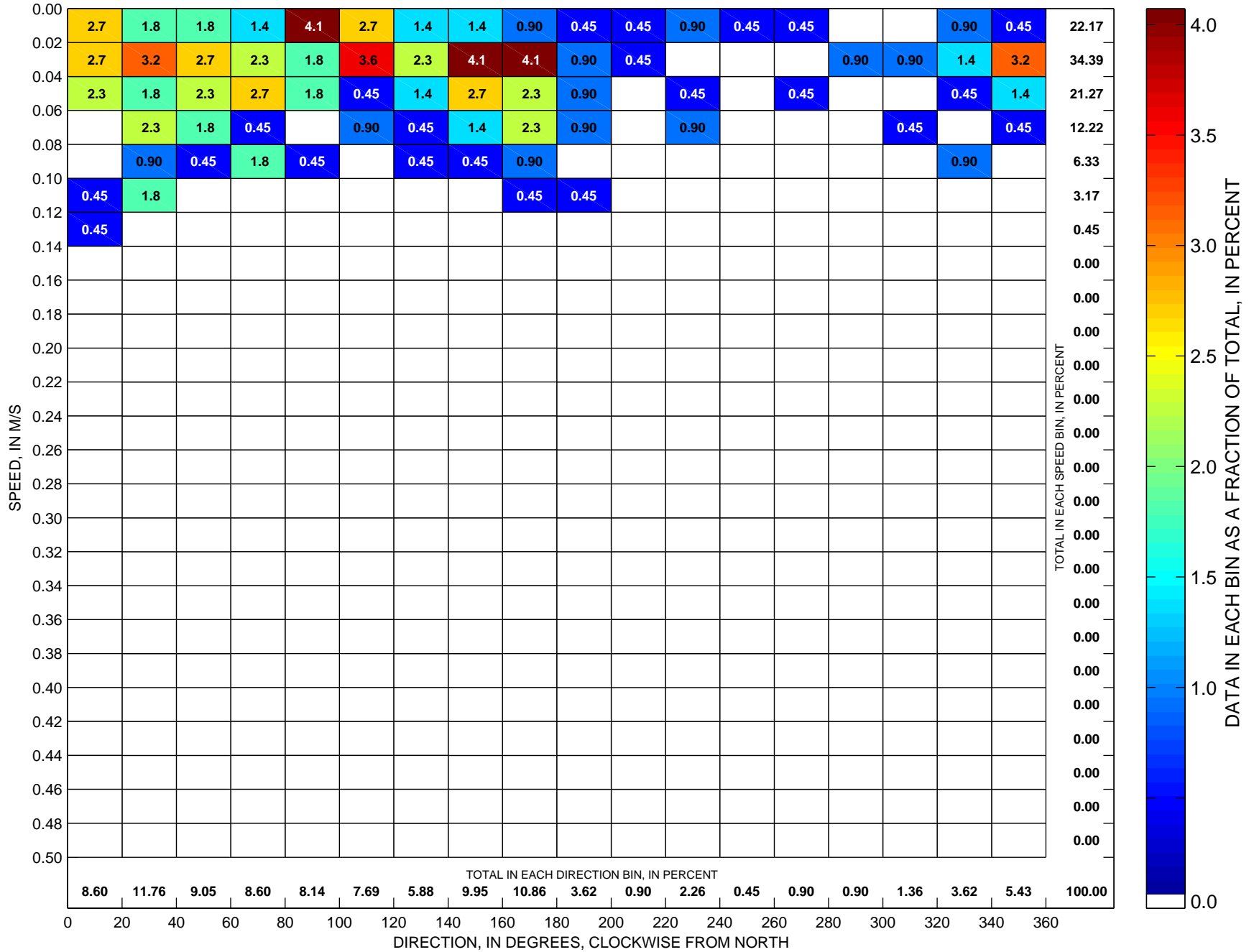
Total number of data points sorted is 1198, which is 82 percent of possible observations made during the full year.

Currents at LT-A Sorted by Speed and Direction Low-Pass-Filtered Point Current-Meter Observations at ~5 m, 1993



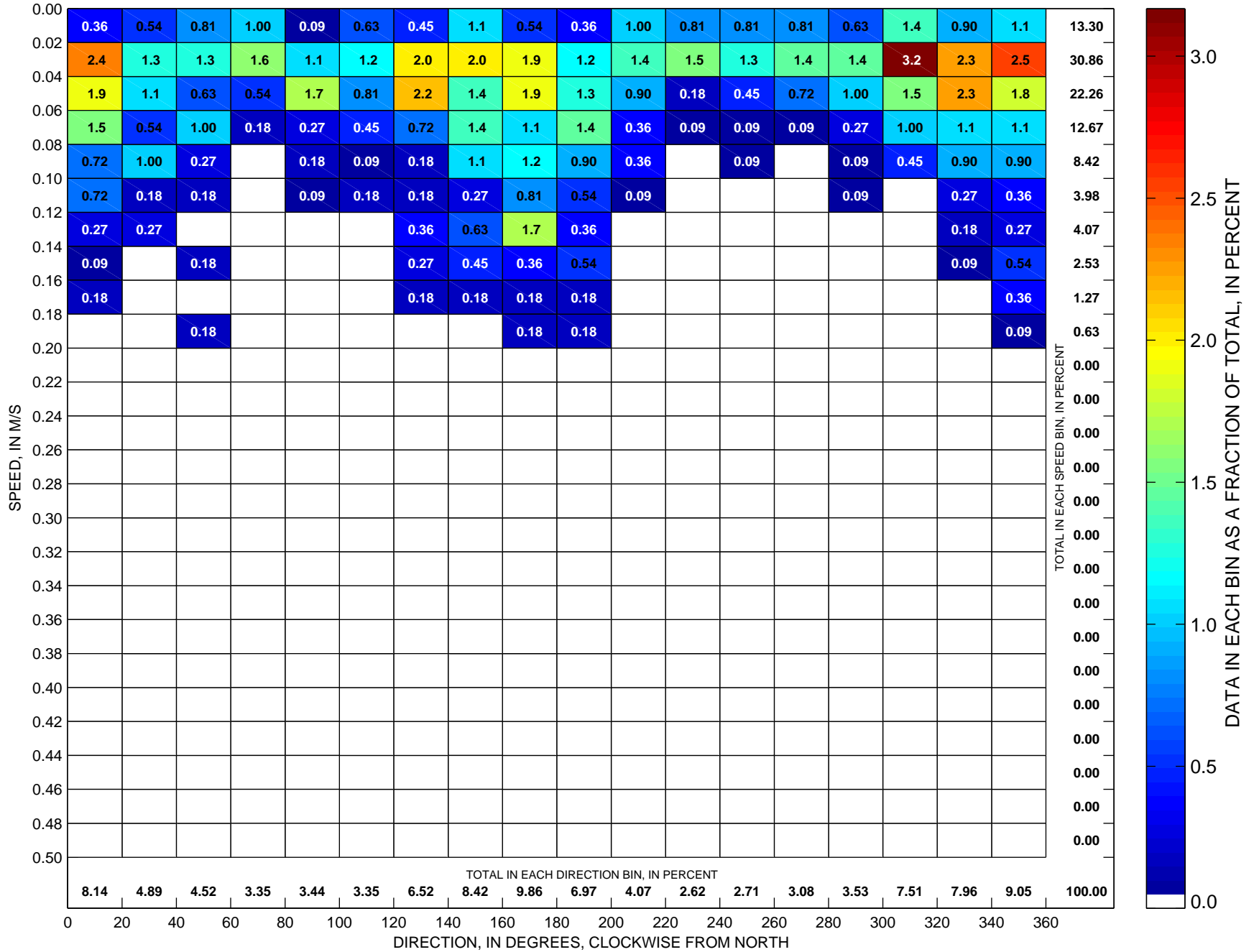
Total number of data points sorted is 780, which is 53 percent of possible observations made during the full year.

Currents at LT-A Sorted by Speed and Direction Low-Pass-Filtered Point Current-Meter Observations at ~5 m, 1994



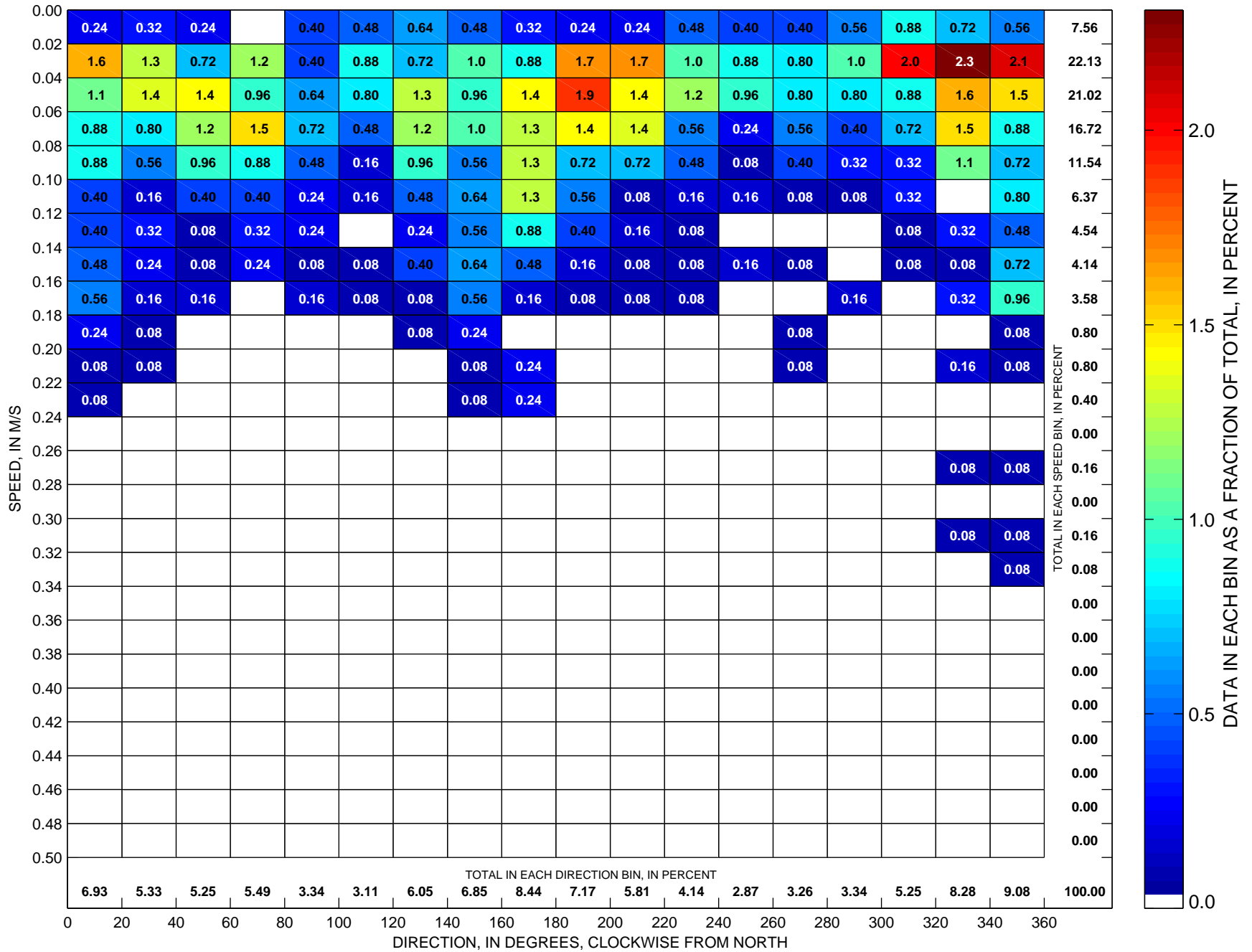
Total number of data points sorted is 221, which is 15 percent of possible observations made during the full year.

Currents at LT-A Sorted by Speed and Direction Low-Pass-Filtered Point Current-Meter Observations at ~5 m, 1995



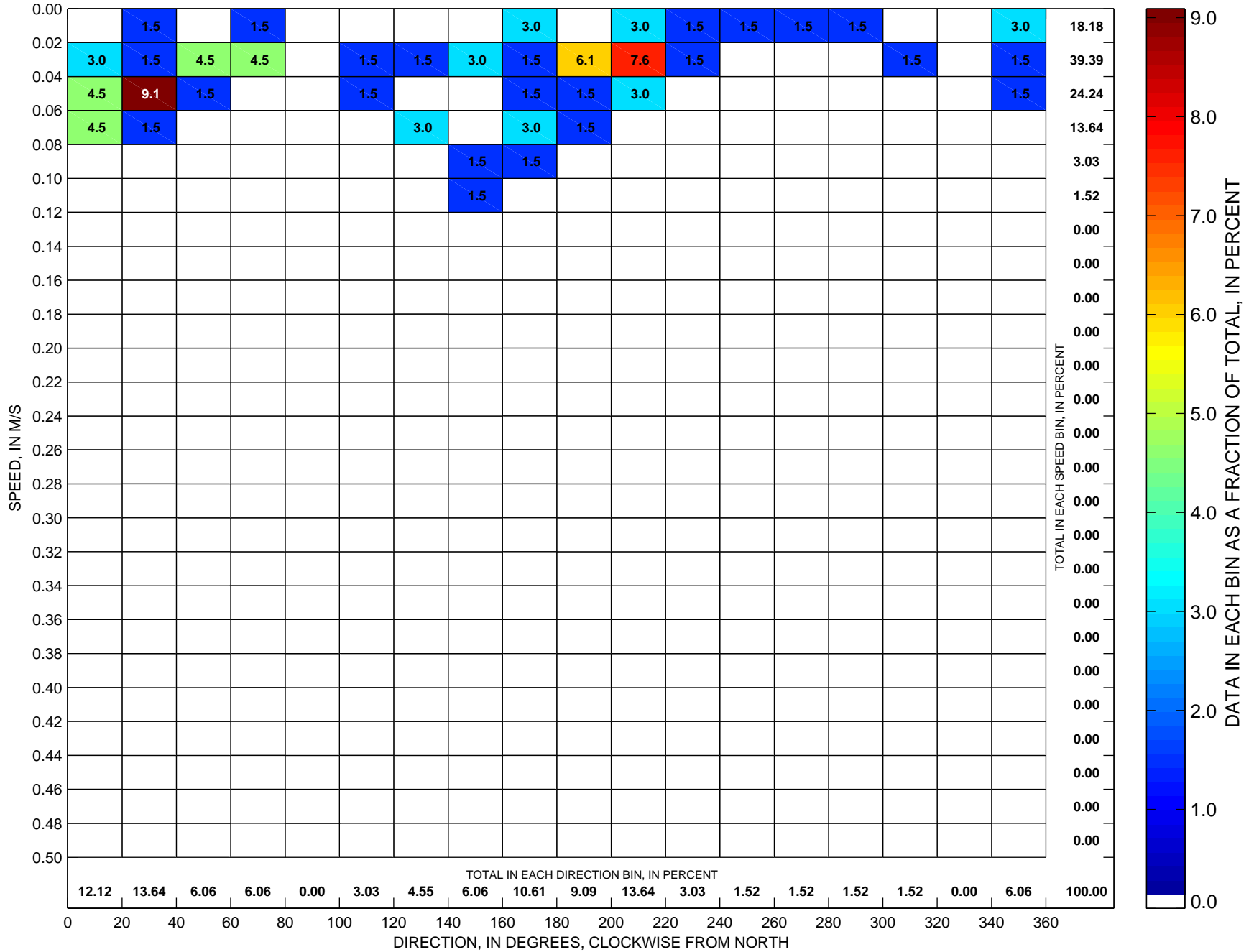
Total number of data points sorted is 1105, which is 76 percent of possible observations made during the full year.

Currents at LT-A Sorted by Speed and Direction Low-Pass-Filtered Point Current-Meter Observations at ~5 m, 1996



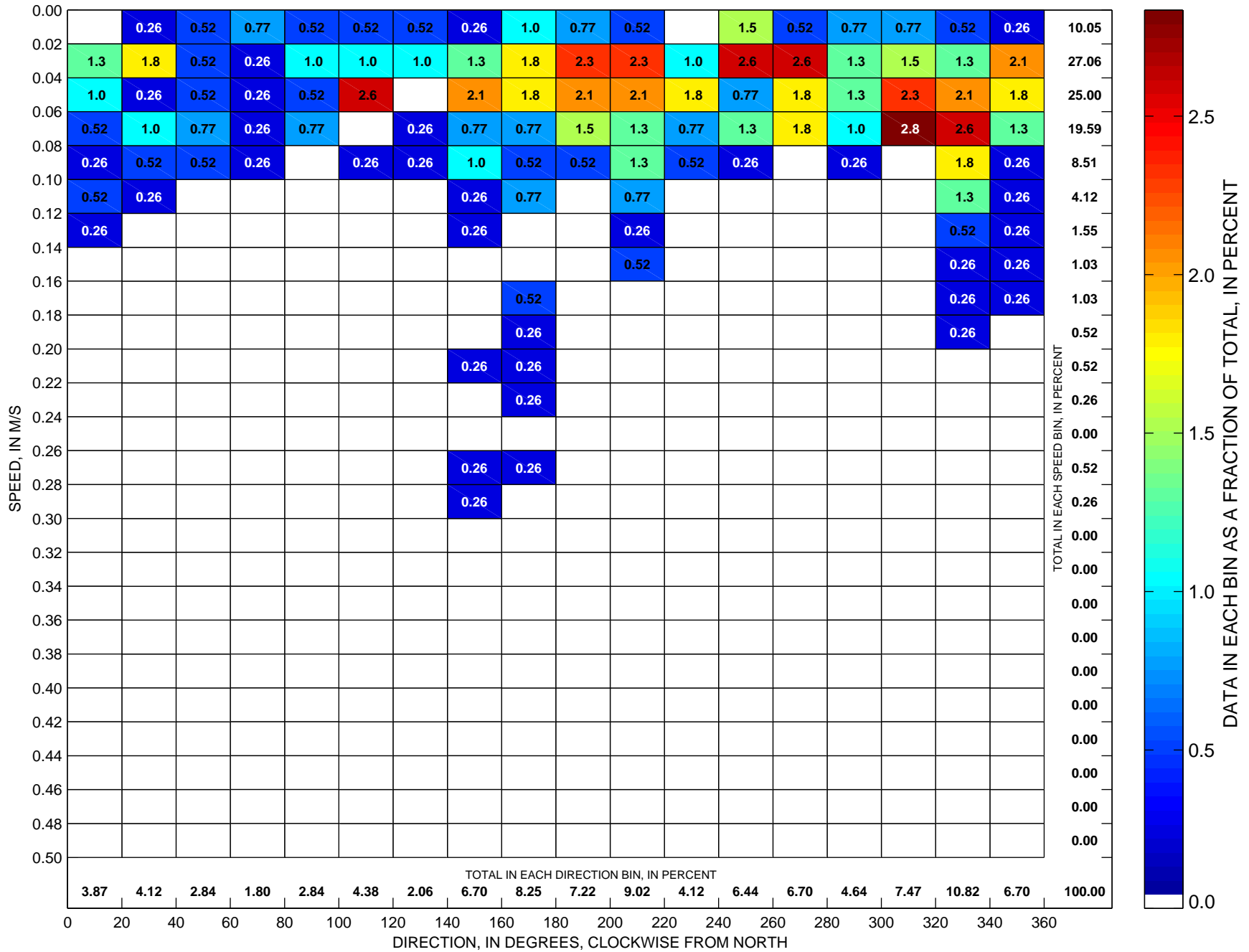
Total number of data points sorted is 1256, which is 86 percent of possible observations made during the full year.

Currents at LT-A Sorted by Speed and Direction Low-Pass-Filtered Point Current-Meter Observations at ~5 m, 1997



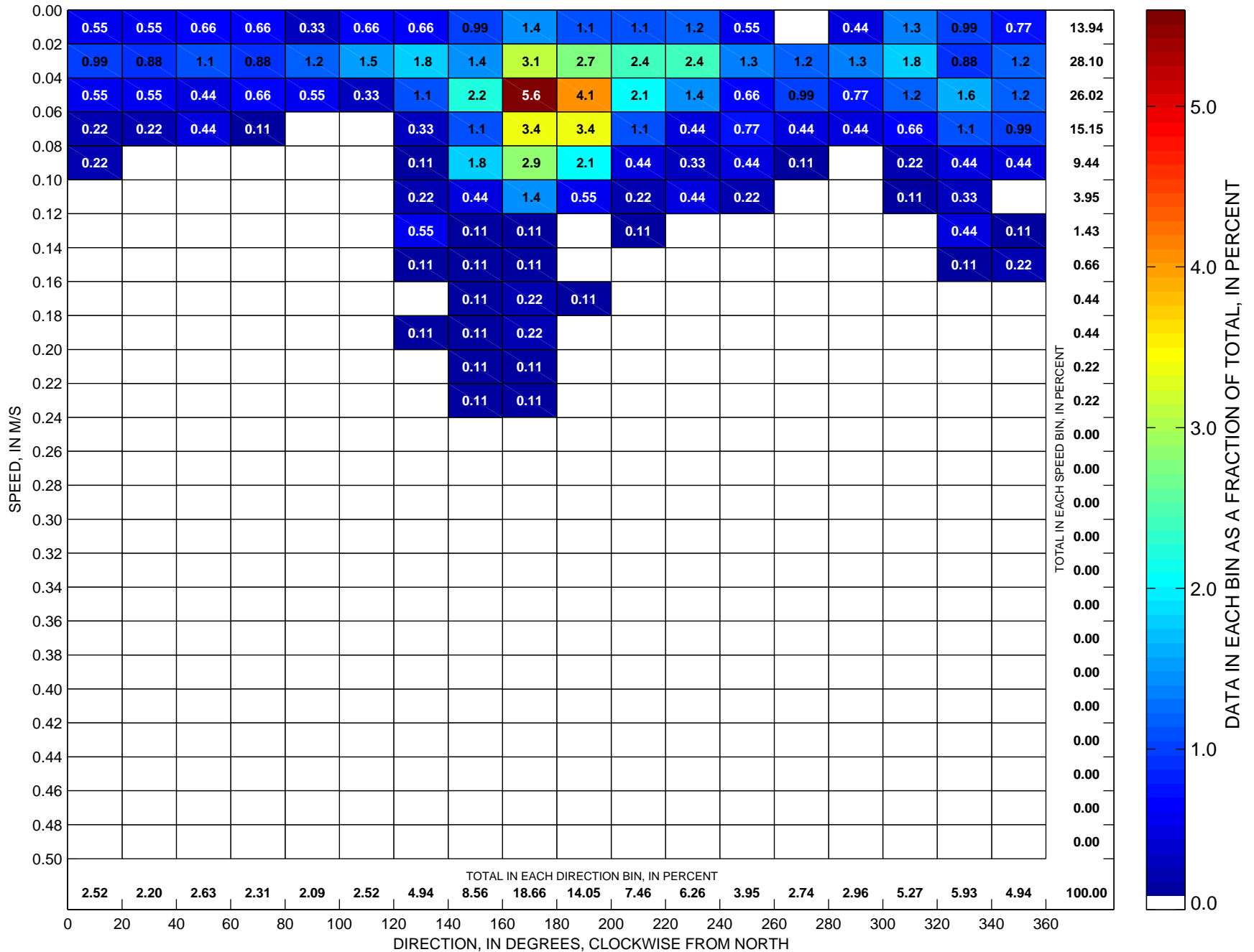
Total number of data points sorted is 66, which is 5 percent of possible observations made during the full year.

Currents at LT-A Sorted by Speed and Direction Low-Pass-Filtered Point Current-Meter Observations at ~5 m, 2003



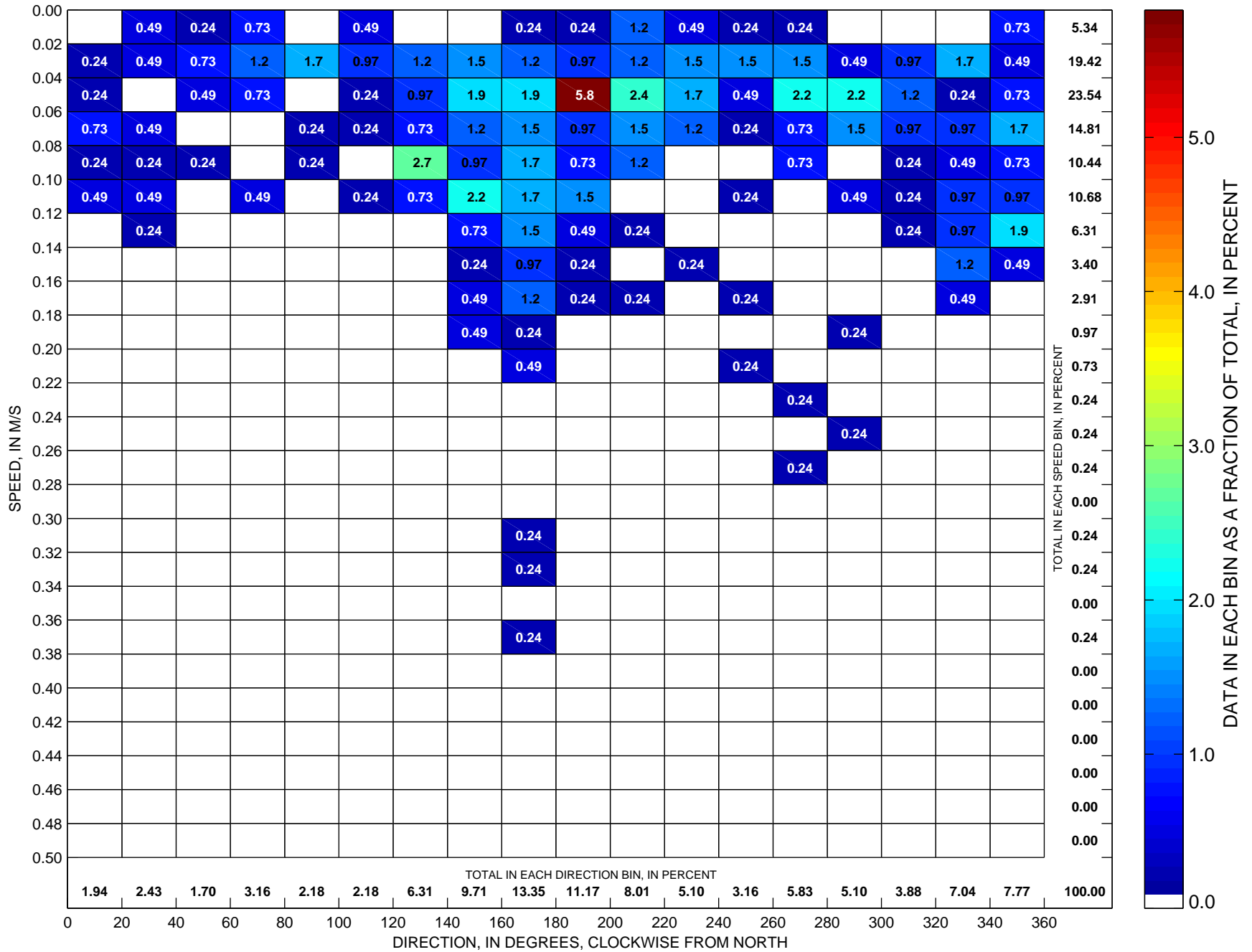
Total number of data points sorted is 388, which is 27 percent of possible observations made during the full year.

Currents at LT-A Sorted by Speed and Direction Low-Pass-Filtered Point Current-Meter Observations at ~5 m, 2004



Total number of data points sorted is 911, which is 62 percent of possible observations made during the full year.

Currents at LT-A Sorted by Speed and Direction Low-Pass-Filtered Point Current-Meter Observations at ~5 m, 2005



Total number of data points sorted is 412, which is 28 percent of possible observations made during the full year.