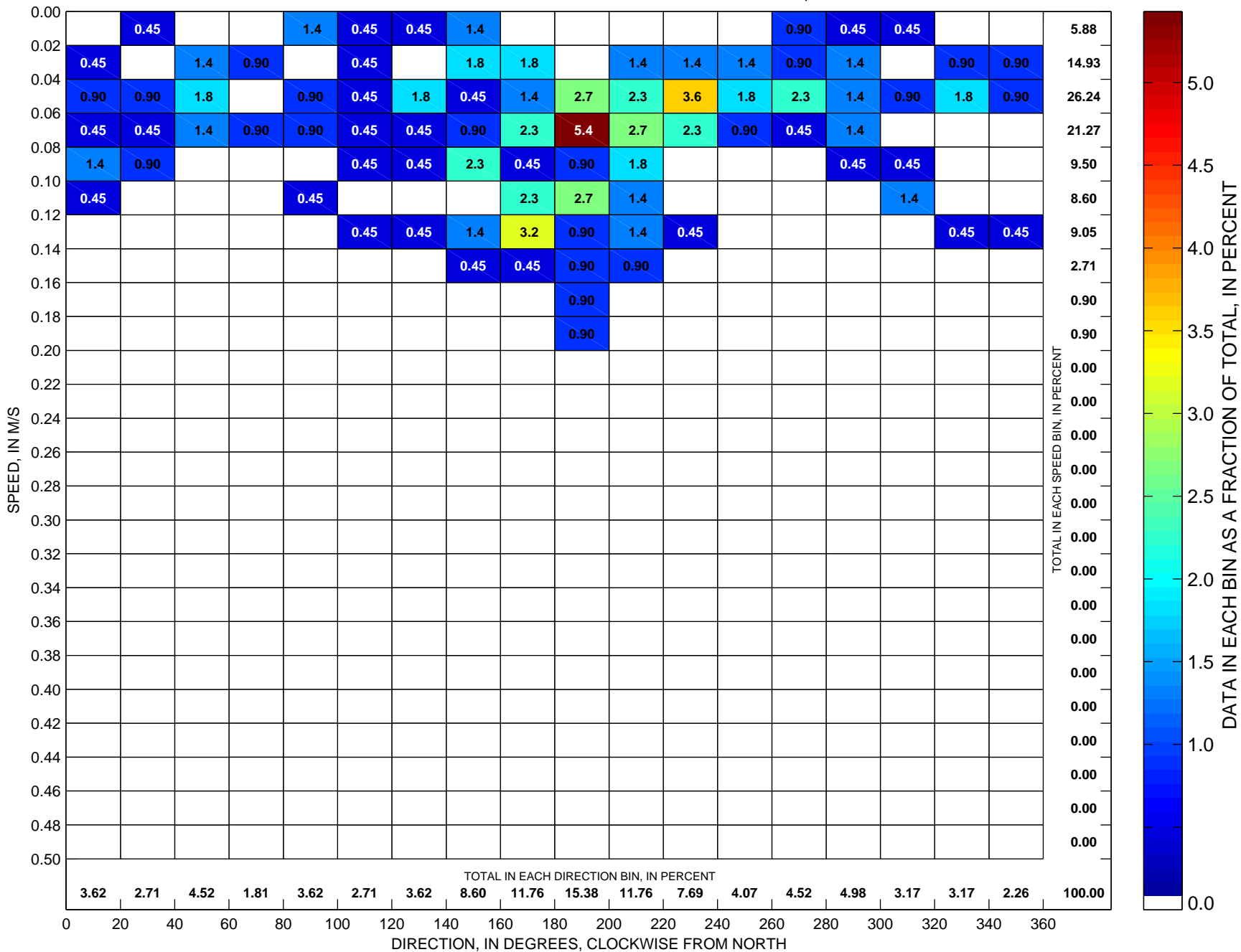
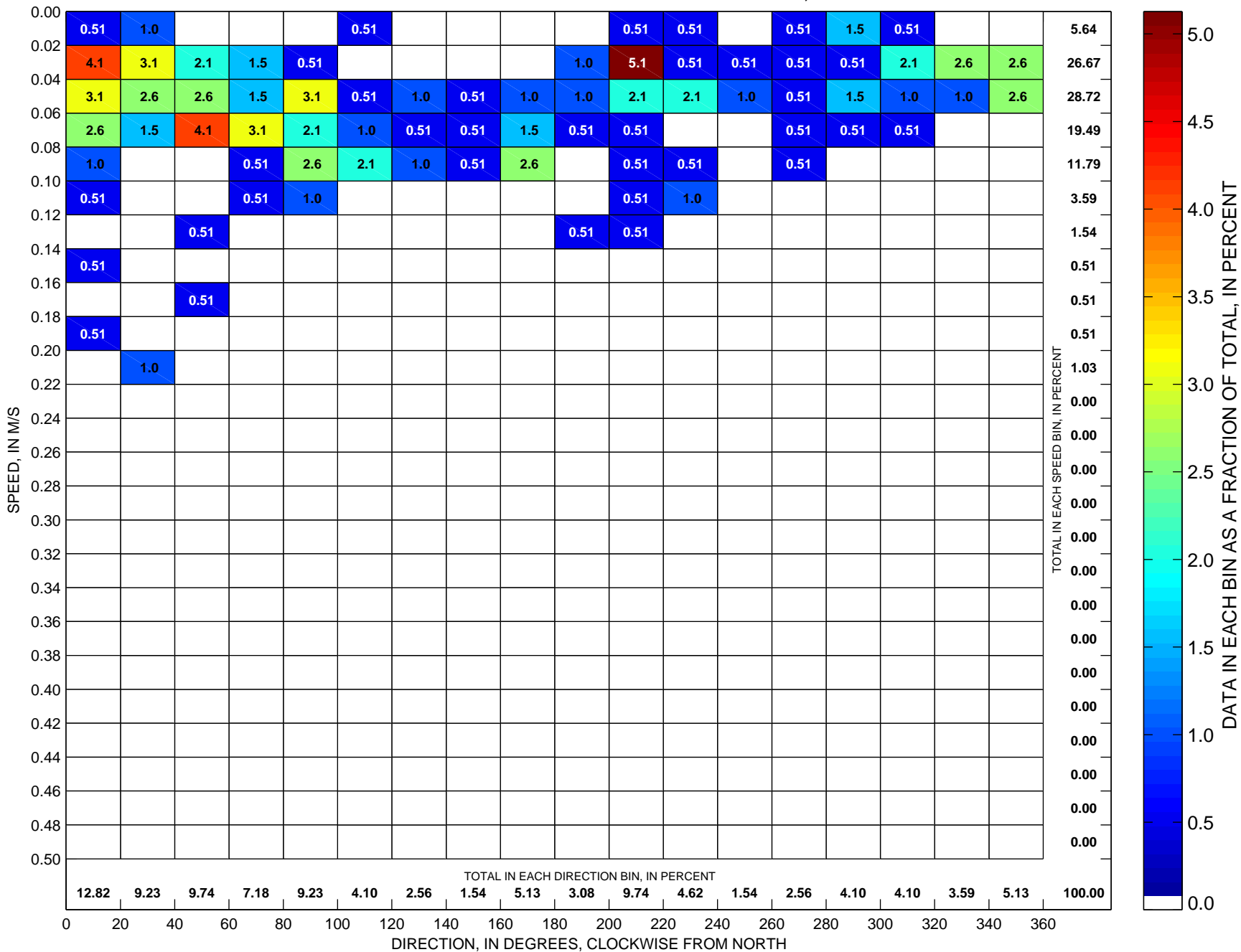


Currents at LT-A Sorted by Speed and Direction Low-Pass-Filtered ADCP Observations at ~5 m, 1995



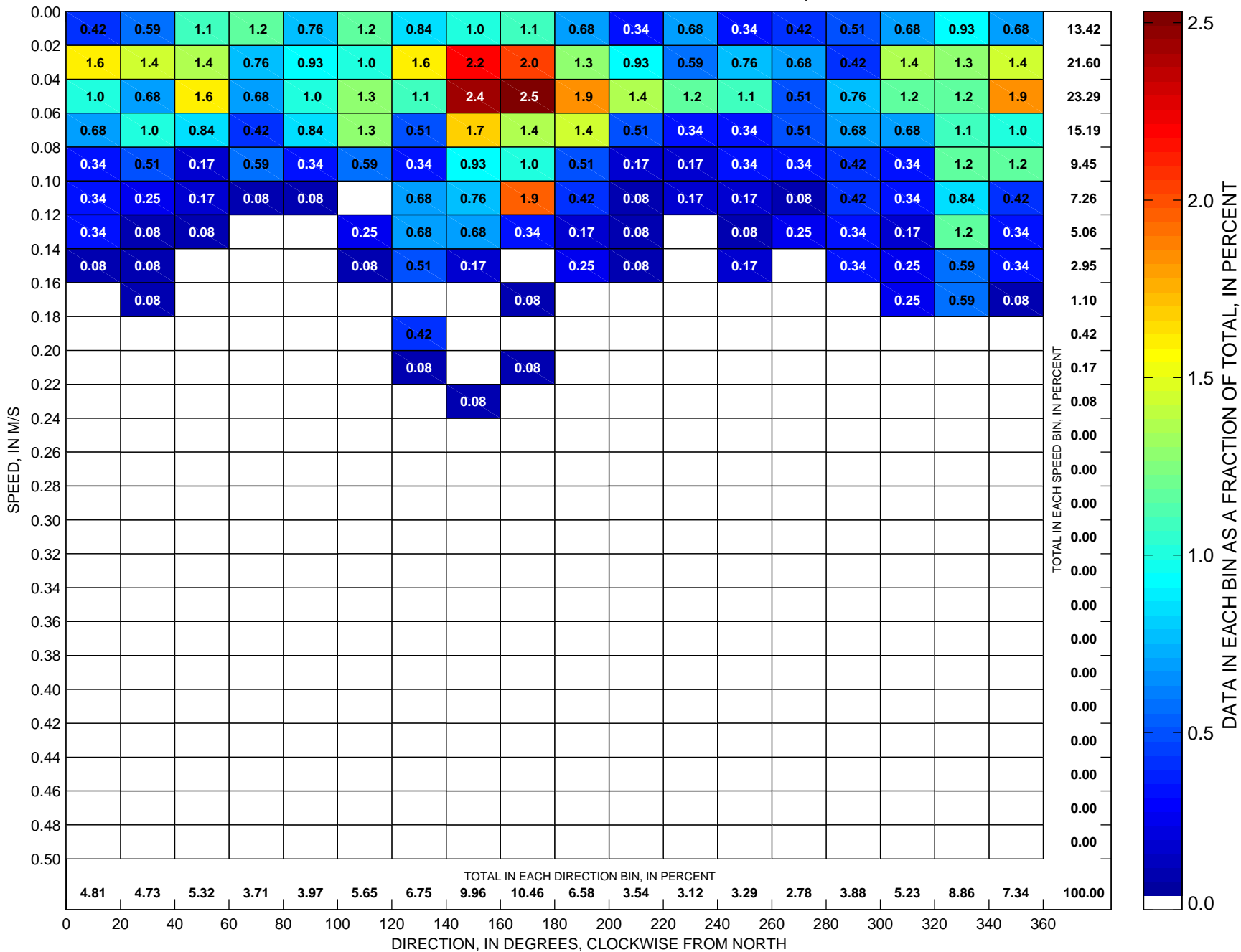
Total number of data points sorted is 221, which is 15 percent of possible observations made during the full year.

Currents at LT-A Sorted by Speed and Direction Low-Pass-Filtered ADCP Observations at ~5 m, 1996



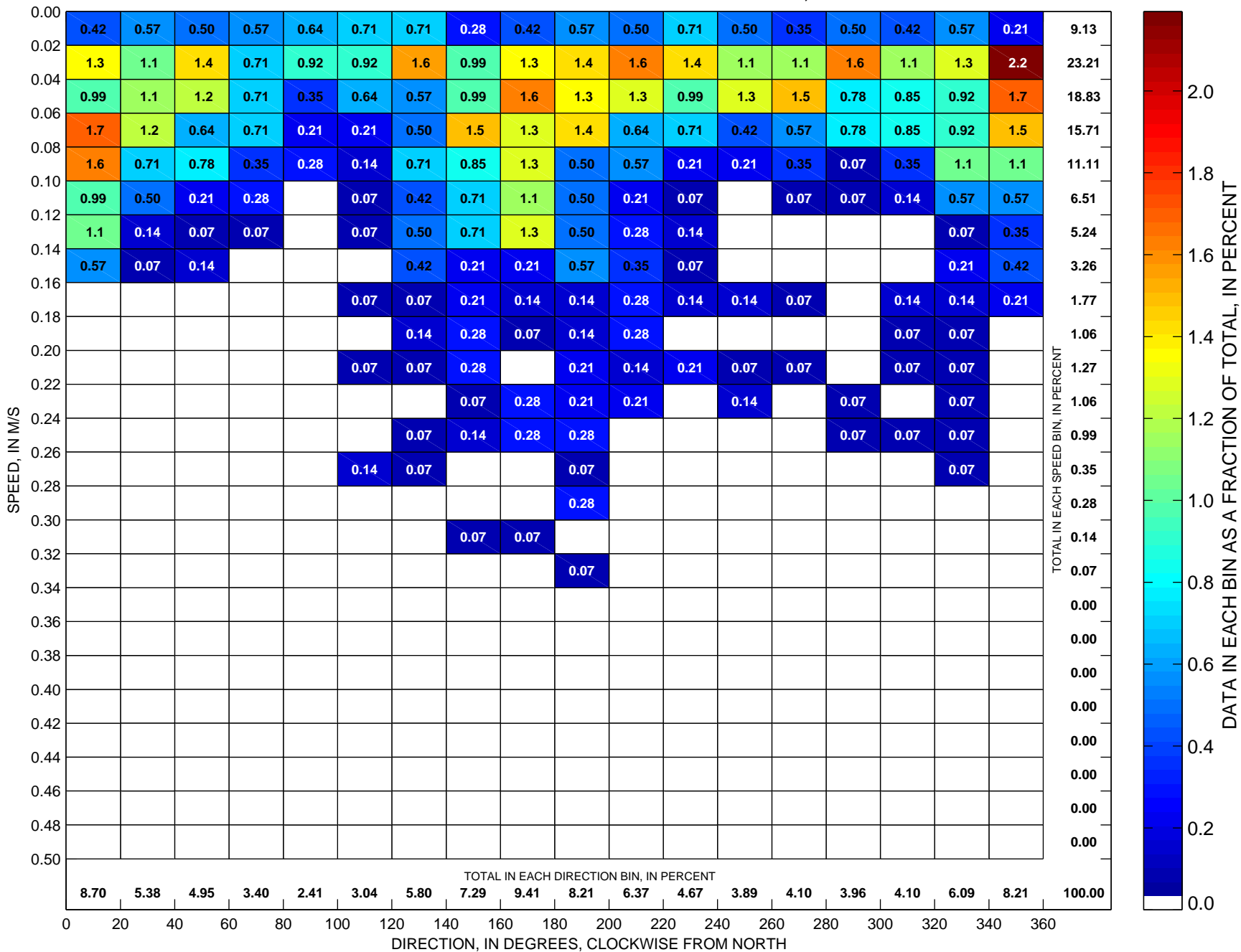
Total number of data points sorted is 195, which is 13 percent of possible observations made during the full year.

Currents at LT-A Sorted by Speed and Direction Low-Pass-Filtered ADCP Observations at ~5 m, 1997



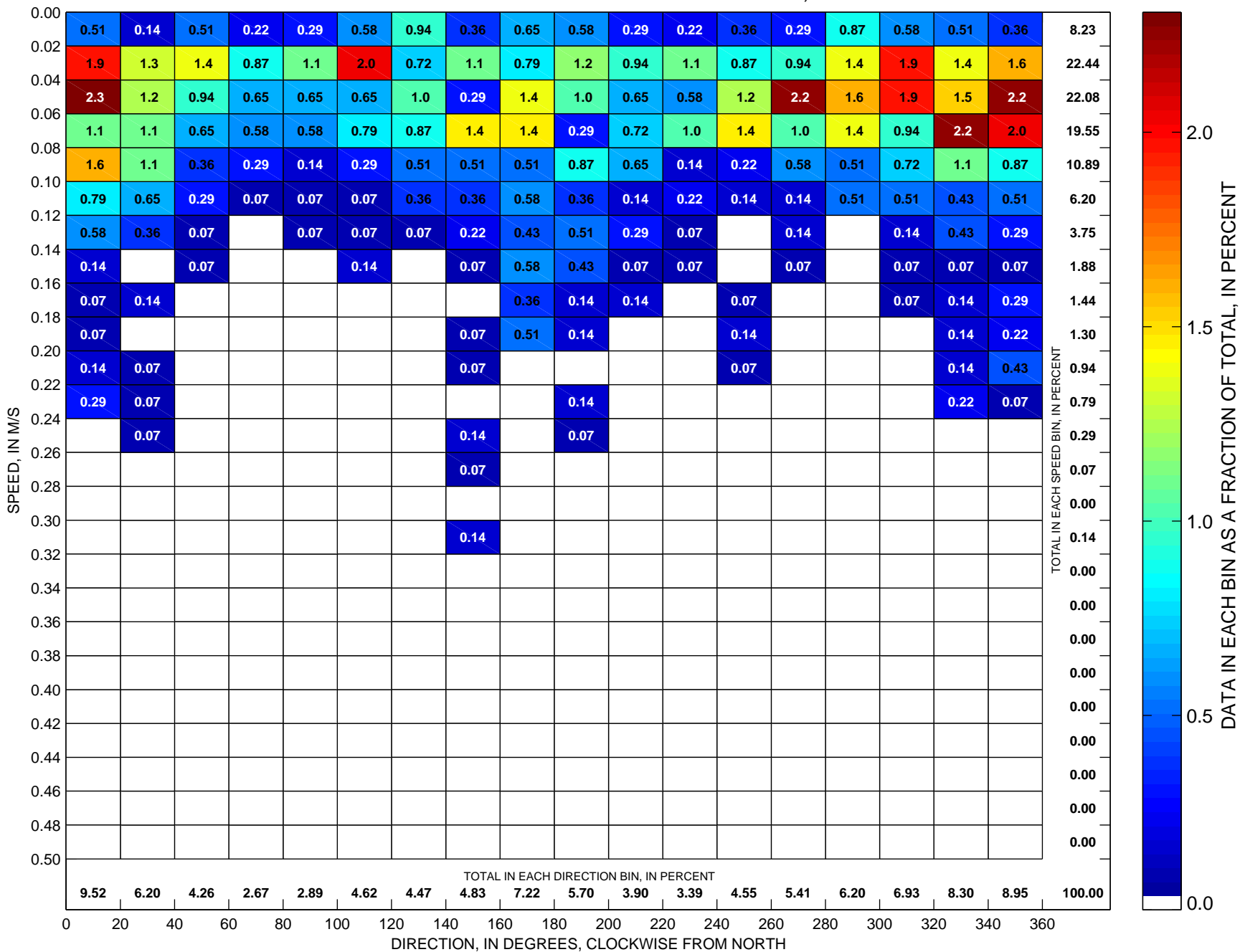
Total number of data points sorted is 1185, which is 81 percent of possible observations made during the full year.

Currents at LT-A Sorted by Speed and Direction Low-Pass-Filtered ADCP Observations at ~5 m, 1998



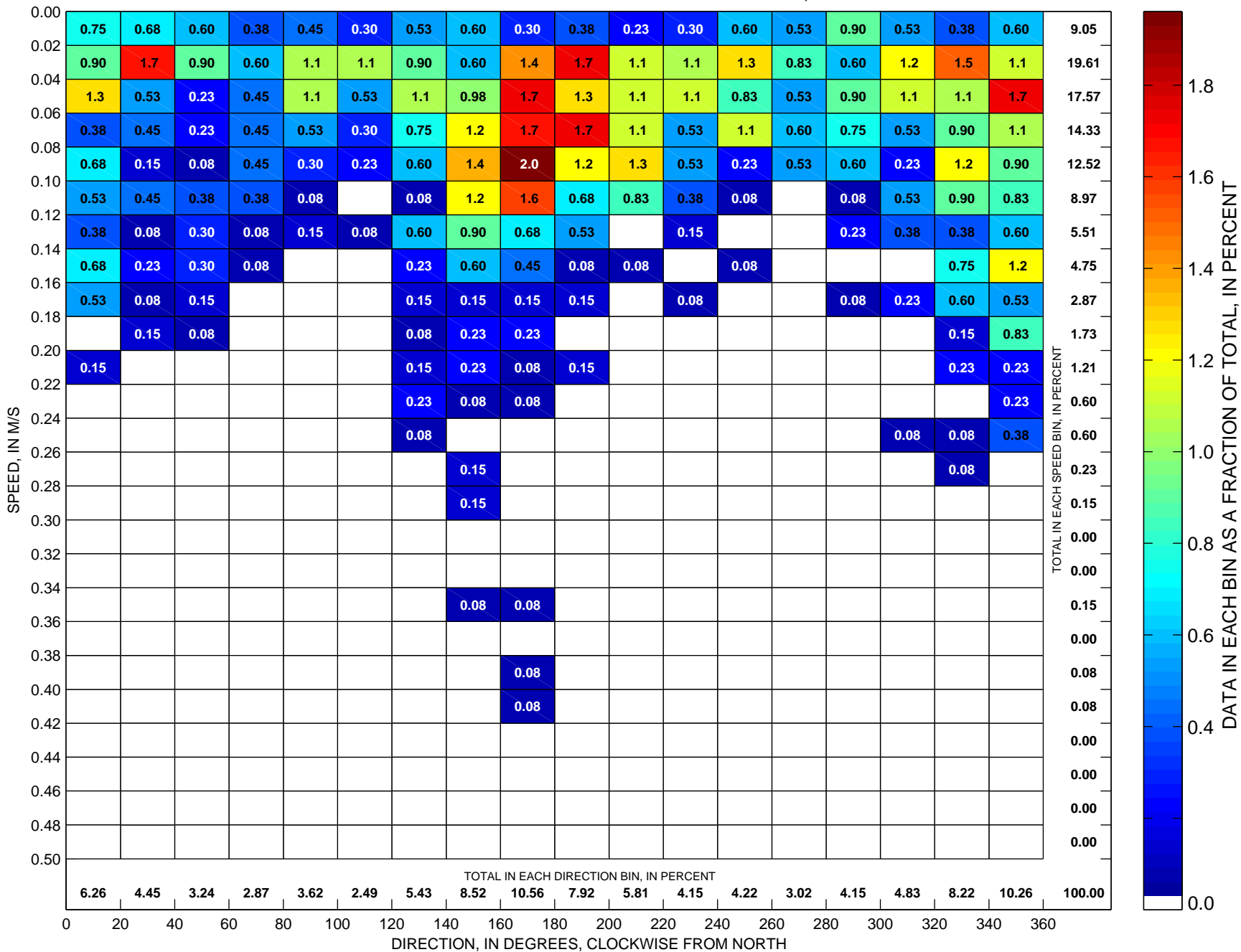
Total number of data points sorted is 1413, which is 97 percent of possible observations made during the full year.

Currents at LT-A Sorted by Speed and Direction Low-Pass-Filtered ADCP Observations at ~5 m, 1999



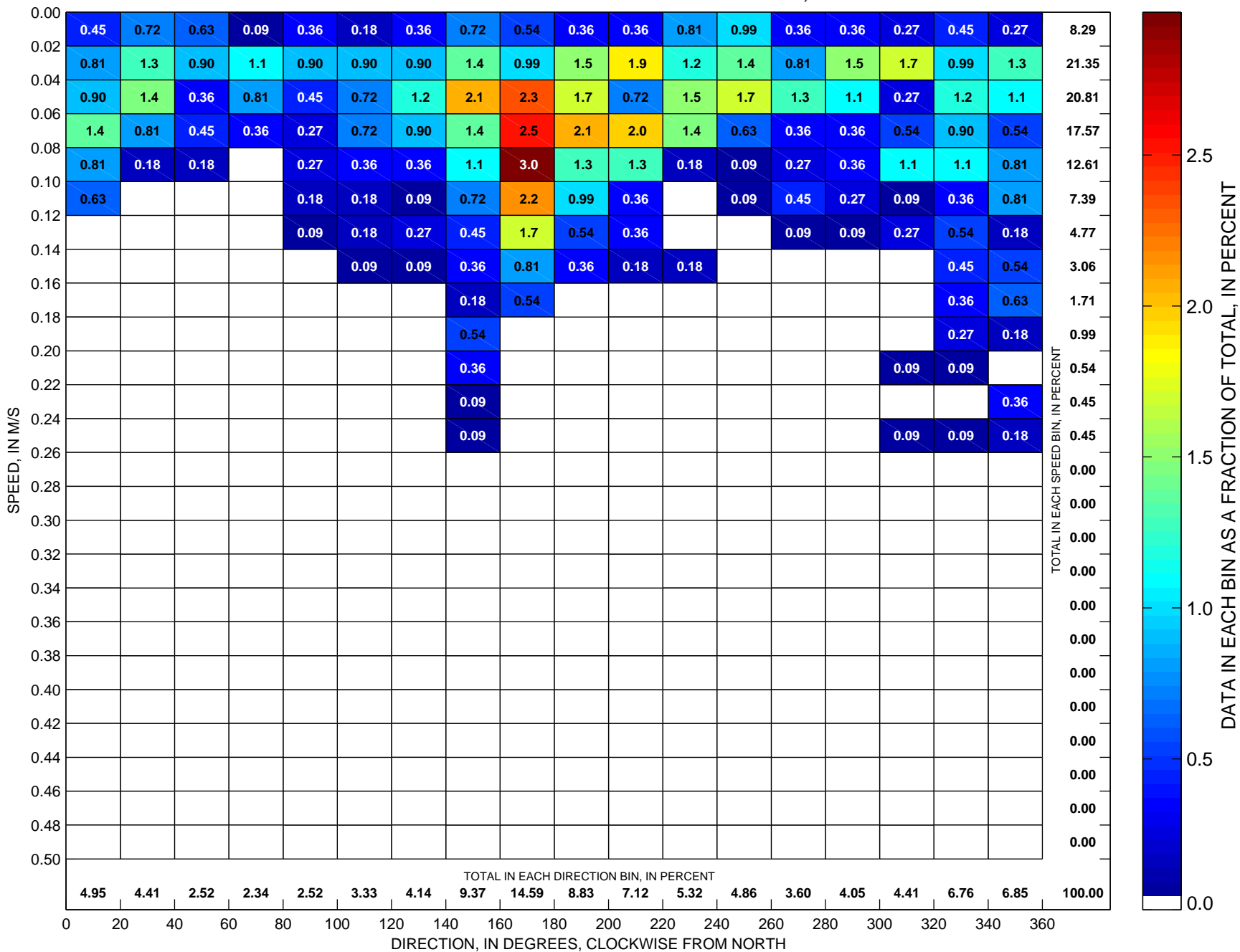
Total number of data points sorted is 1386, which is 95 percent of possible observations made during the full year.

Currents at LT-A Sorted by Speed and Direction Low-Pass-Filtered ADCP Observations at ~5 m, 2000



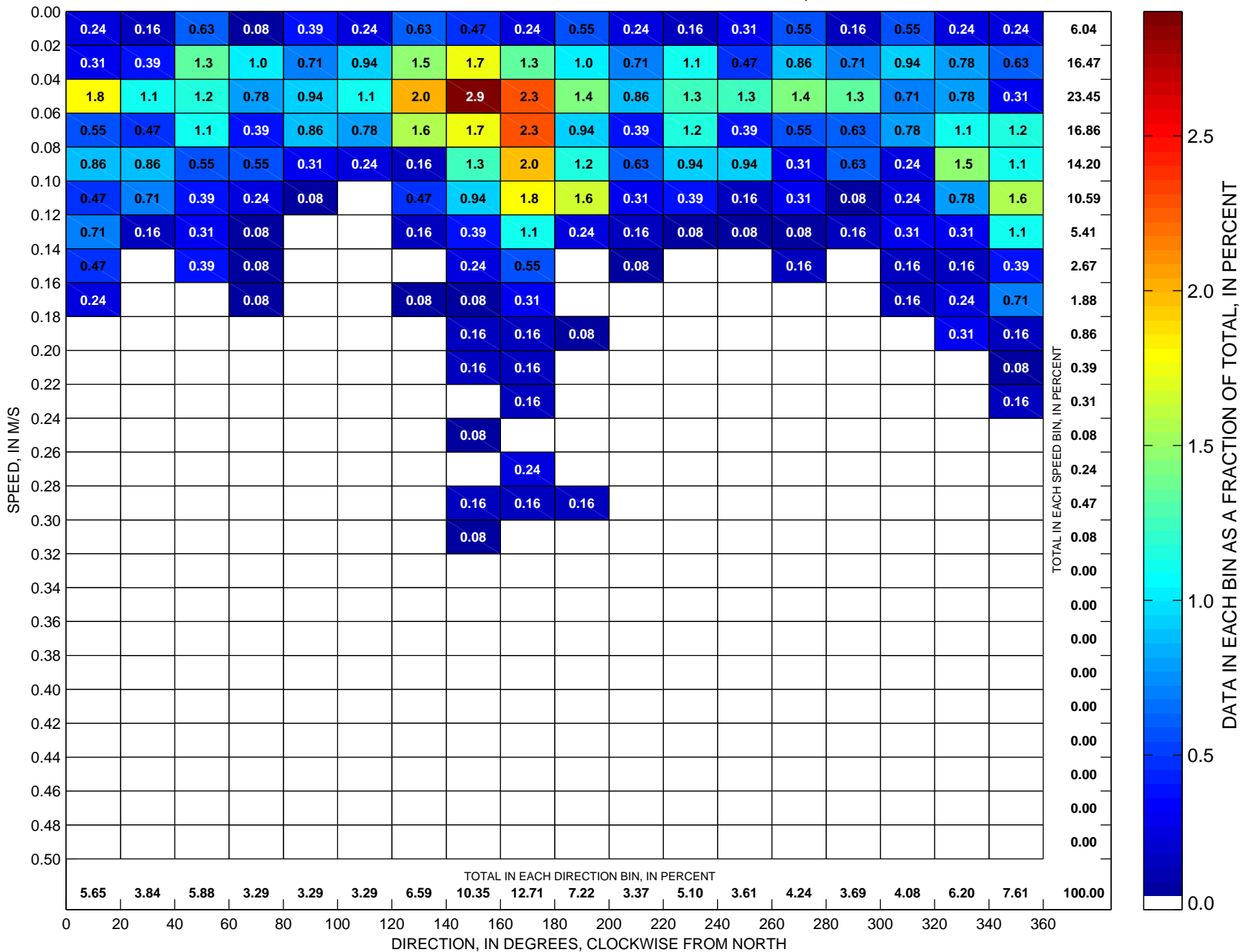
Total number of data points sorted is 1326, which is 91 percent of possible observations made during the full year.

Currents at LT-A Sorted by Speed and Direction Low-Pass-Filtered ADCP Observations at ~5 m, 2001



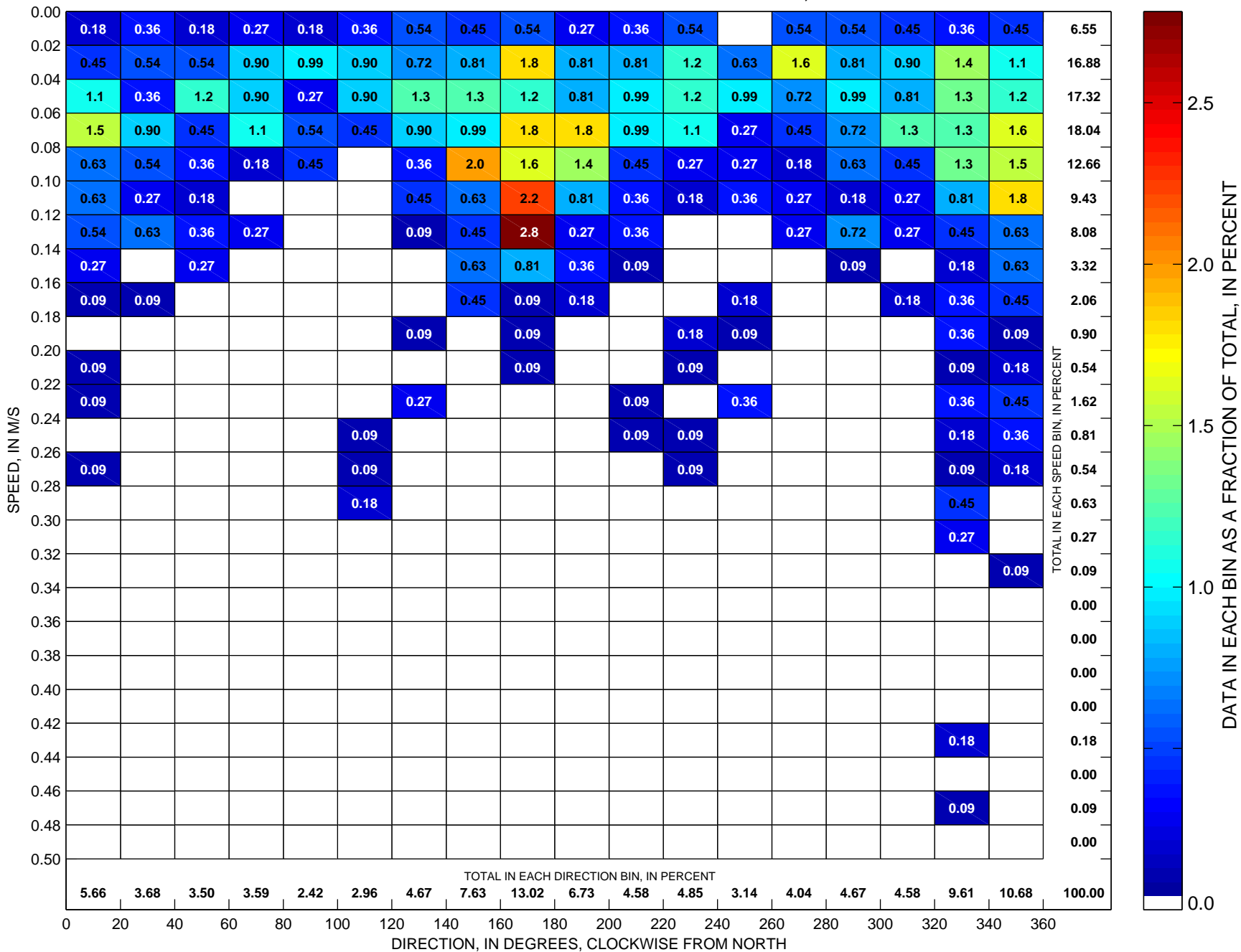
Total number of data points sorted is 1110, which is 76 percent of possible observations made during the full year.

Currents at LT-A Sorted by Speed and Direction Low-Pass-Filtered ADCP Observations at ~5 m, 2002



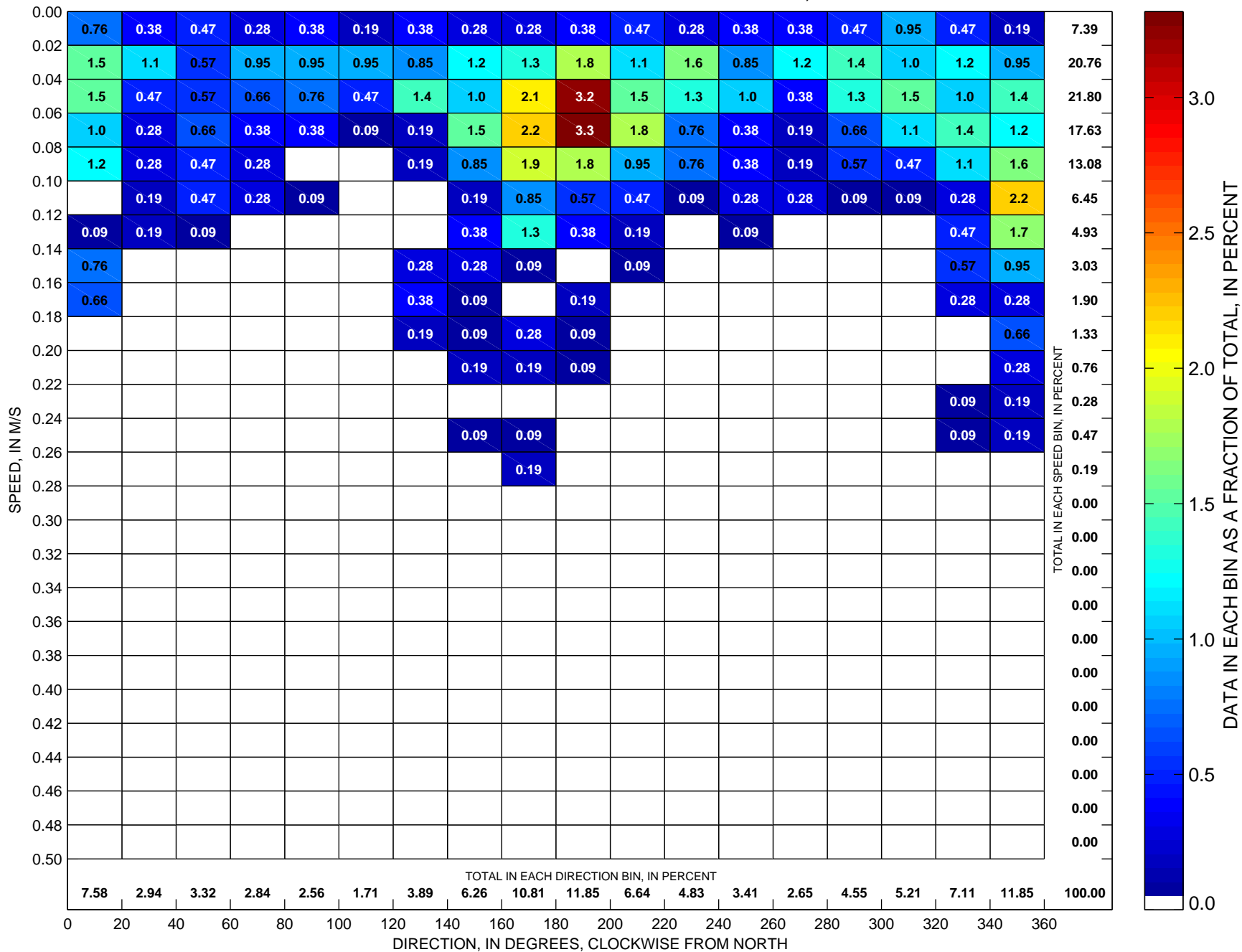
Total number of data points sorted is 1275, which is 87 percent of possible observations made during the full year.

Currents at LT-A Sorted by Speed and Direction Low-Pass-Filtered ADCP Observations at ~5 m, 2003



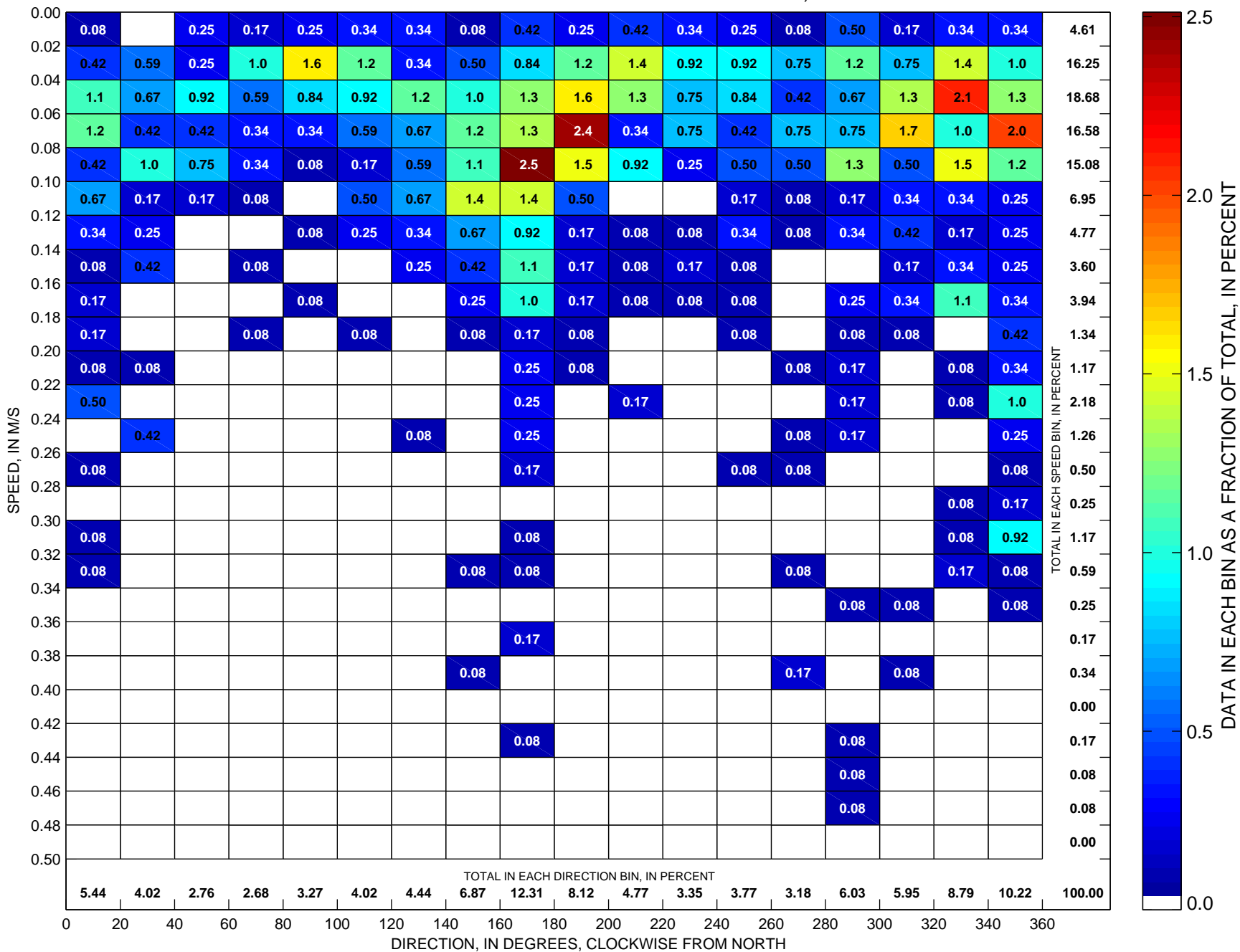
Total number of data points sorted is 1114, which is 76 percent of possible observations made during the full year.

Currents at LT-A Sorted by Speed and Direction Low-Pass-Filtered ADCP Observations at ~5 m, 2004



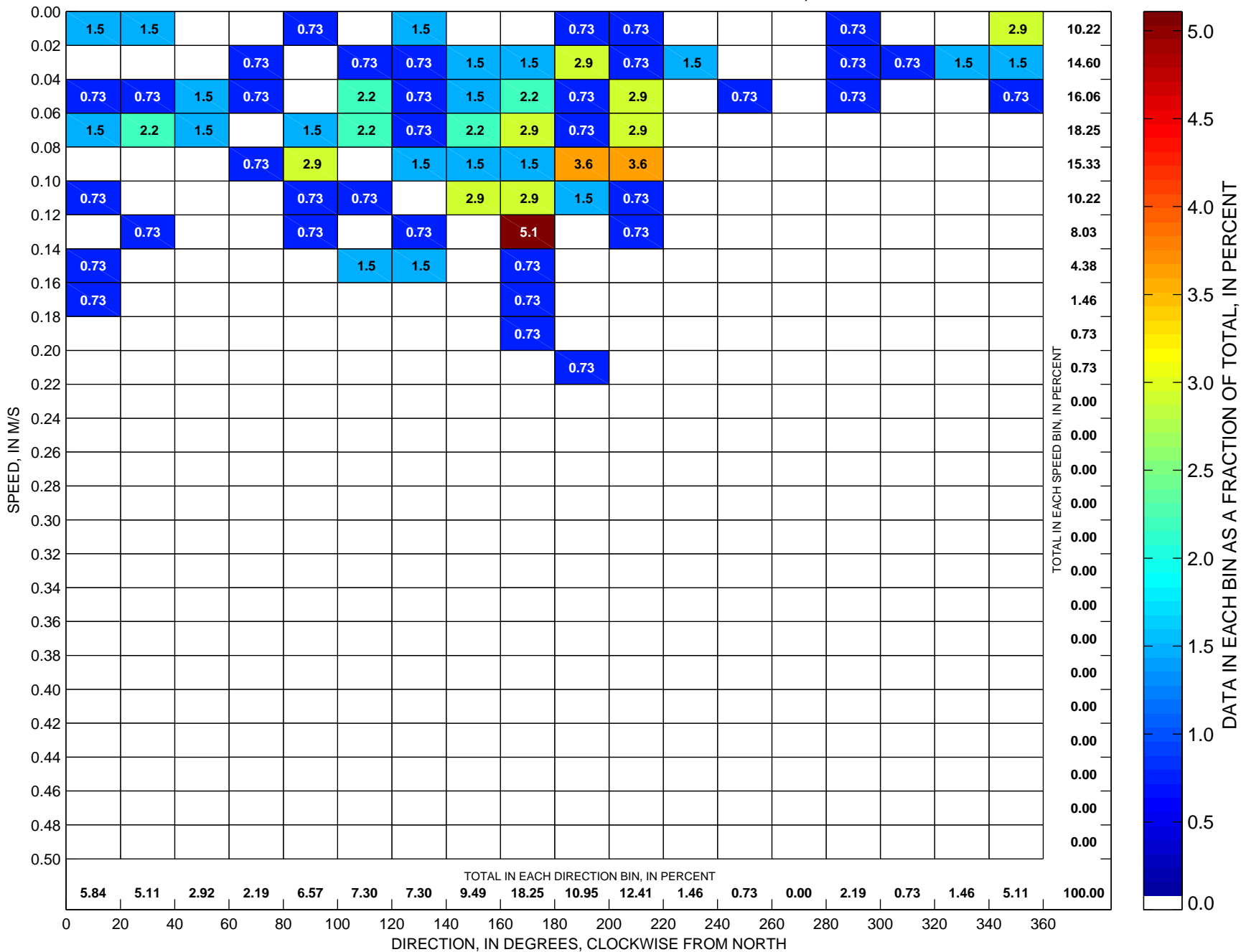
Total number of data points sorted is 1055, which is 72 percent of possible observations made during the full year.

Currents at LT-A Sorted by Speed and Direction Low-Pass-Filtered ADCP Observations at ~5 m, 2005



Total number of data points sorted is 1194, which is 82 percent of possible observations made during the full year.

Currents at LT-A Sorted by Speed and Direction Low-Pass-Filtered ADCP Observations at ~5 m, 2006



Total number of data points sorted is 137, which is 9 percent of possible observations made during the full year.