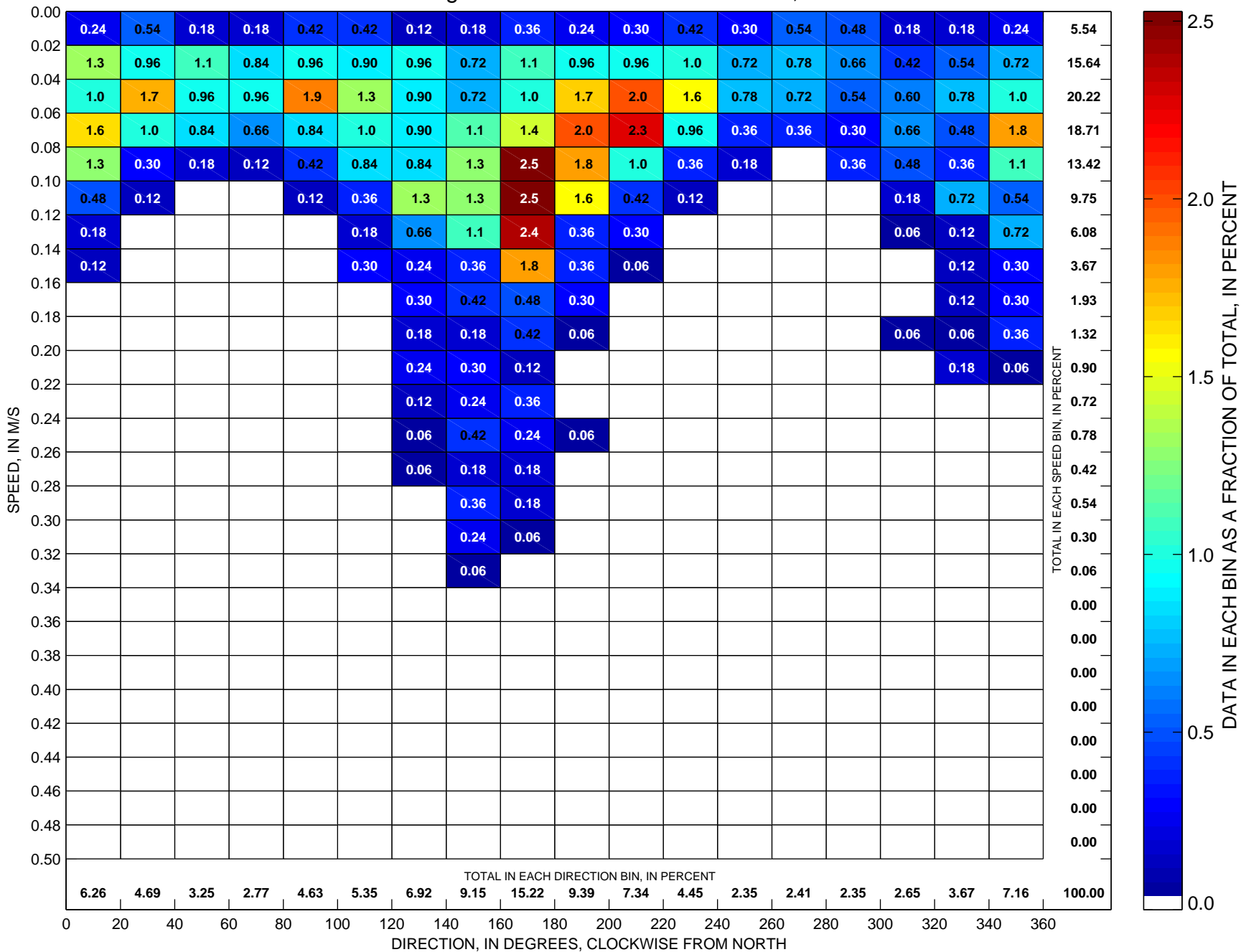
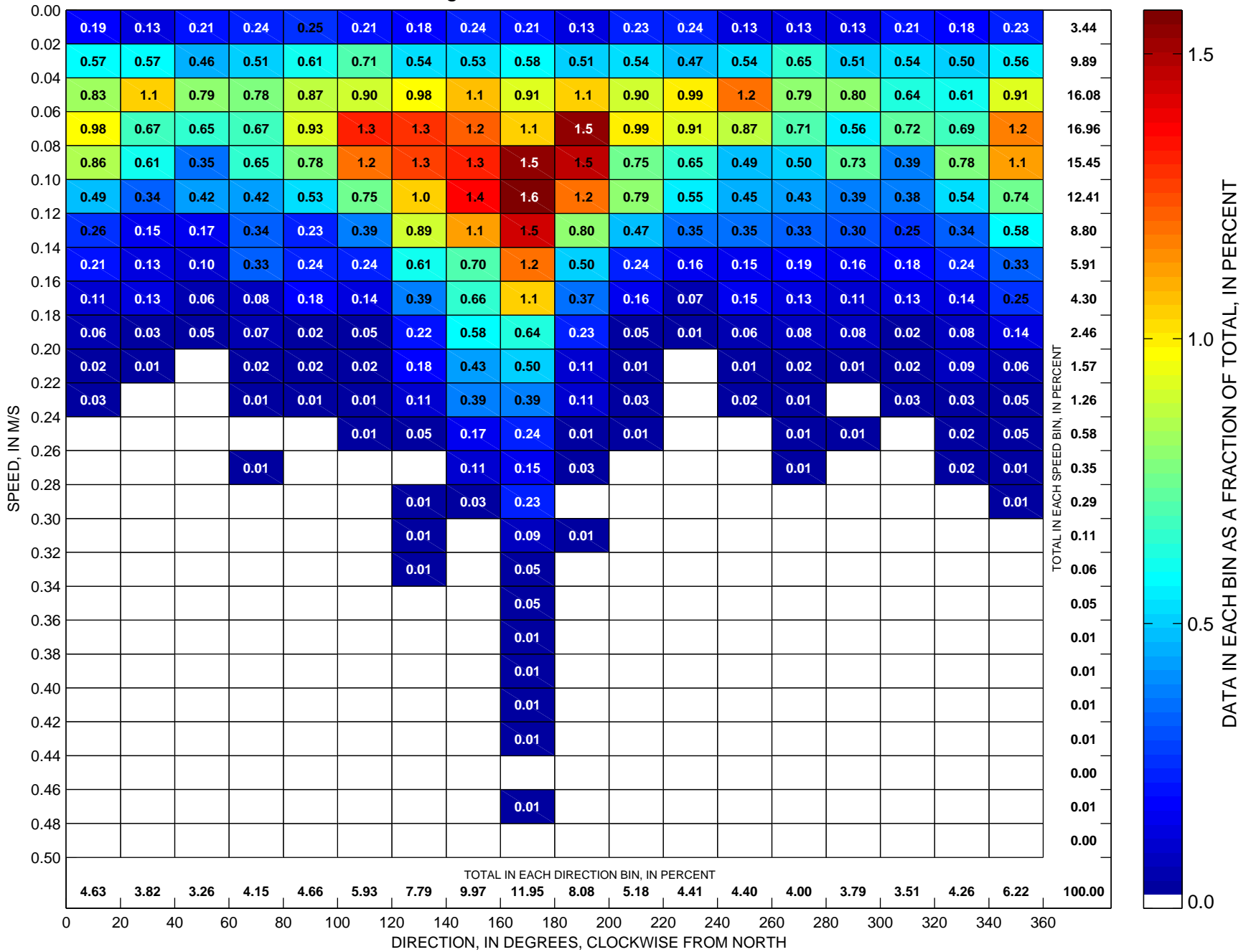


### Currents at LT-B Sorted by Speed and Direction Hour-Averaged ADCP Observations at ~10 m, 1997



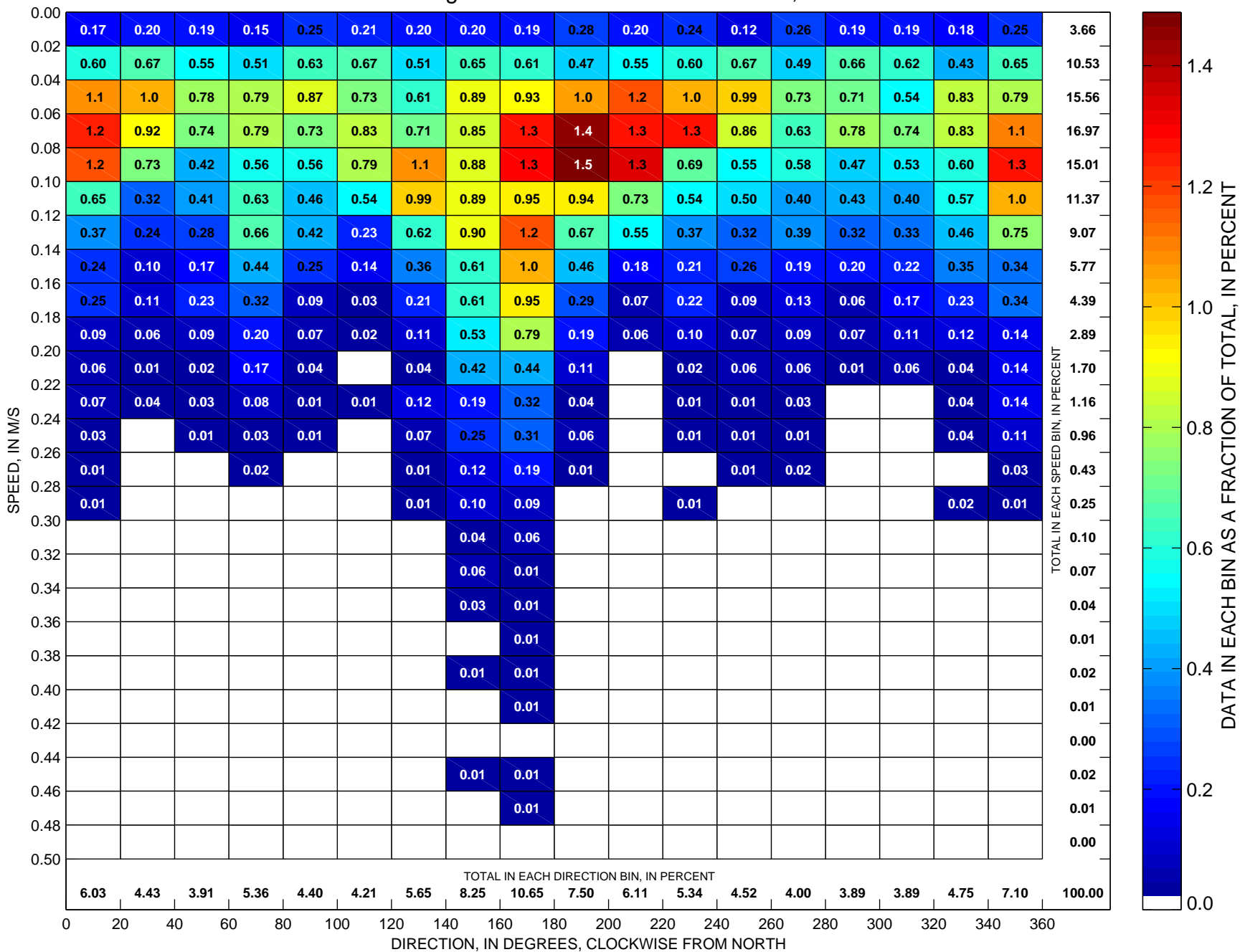
Total number of data points sorted is 1662, which is 19 percent of possible observations made during the full year.

### Currents at LT-B Sorted by Speed and Direction Hour-Averaged ADCP Observations at ~10 m, 1998



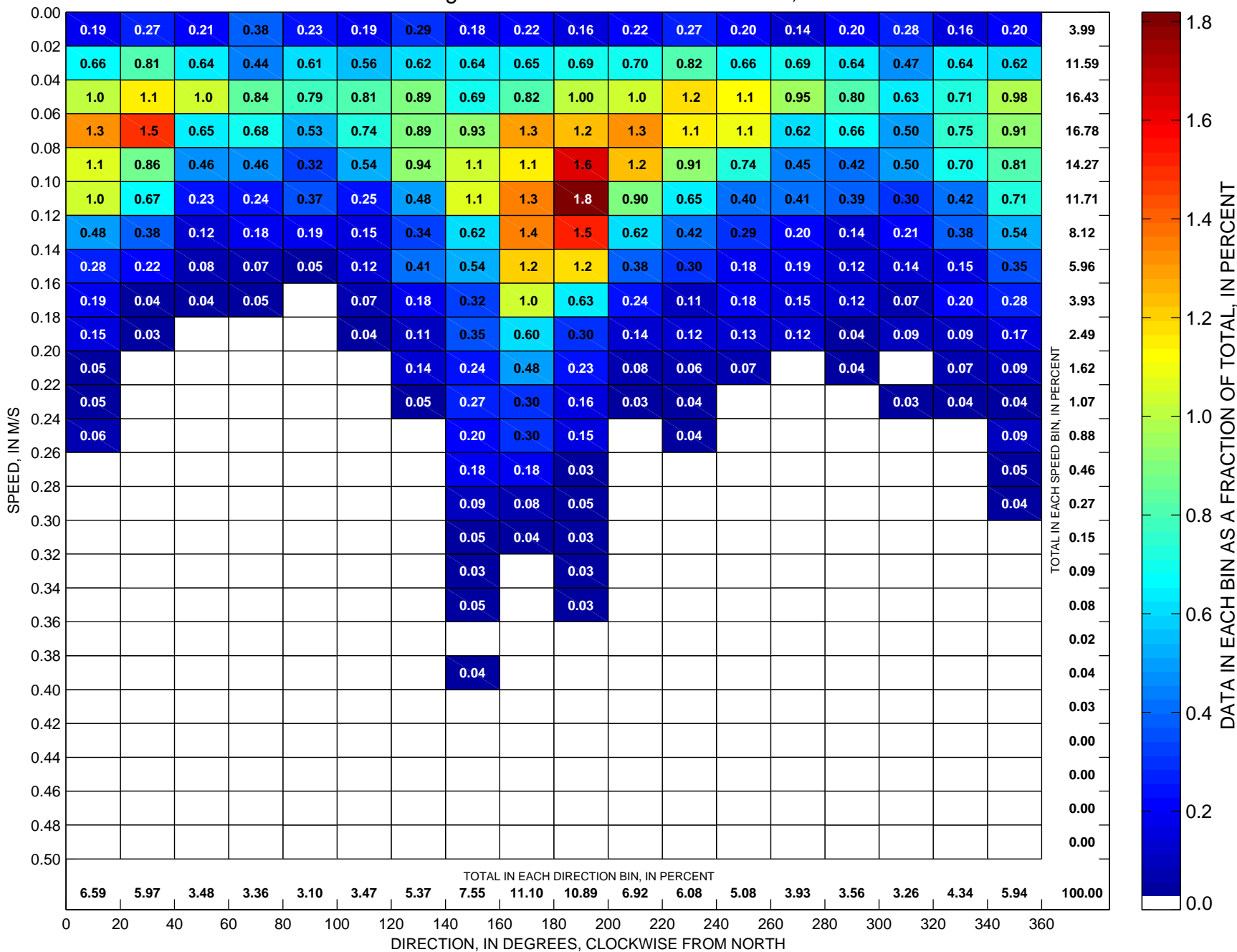
Total number of data points sorted is 8752, which is 100 percent of possible observations made during the full year.

### Currents at LT-B Sorted by Speed and Direction Hour-Averaged ADCP Observations at ~10 m, 1999



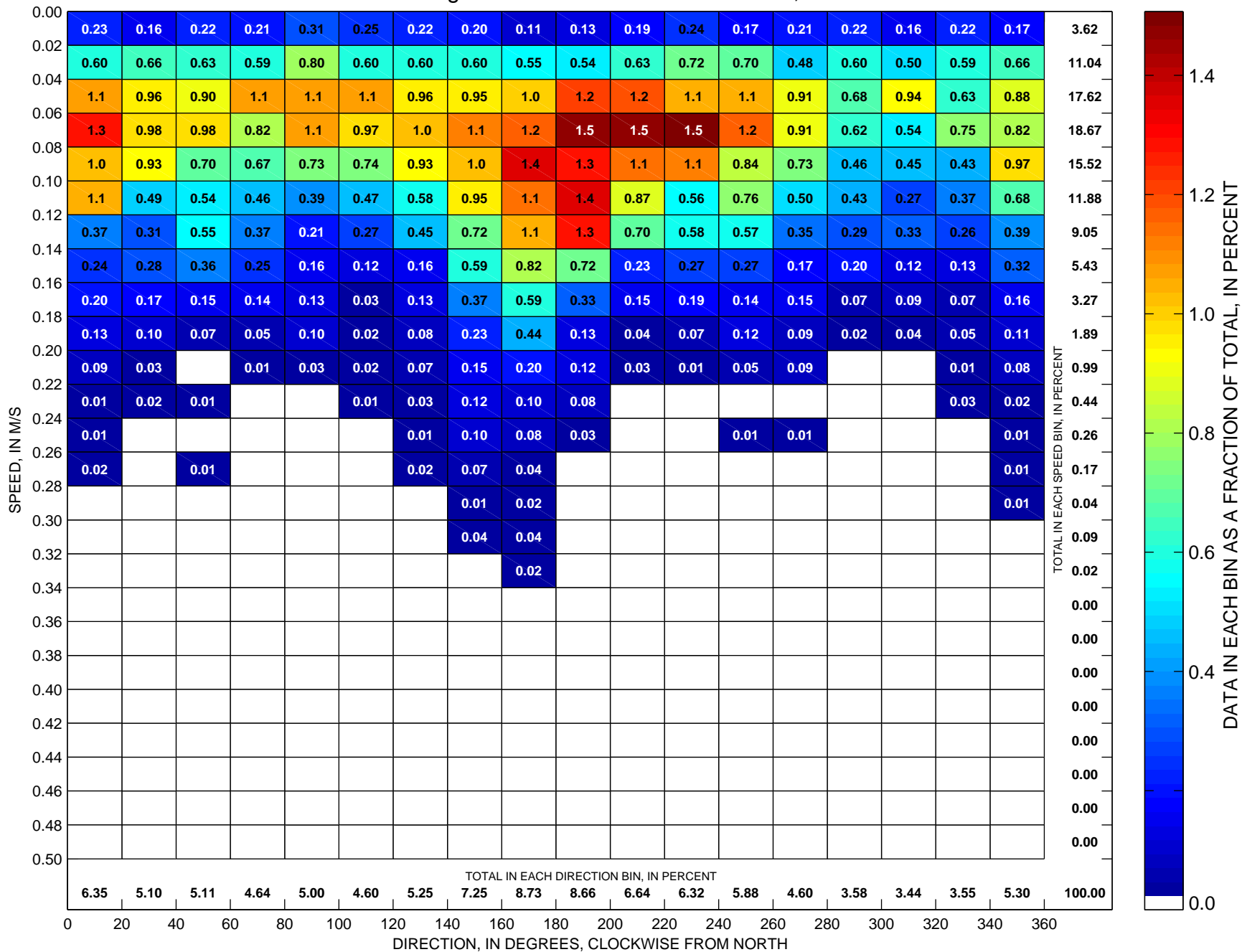
Total number of data points sorted is 9069, which is 104 percent of possible observations made during the full year.

### Currents at LT-B Sorted by Speed and Direction Hour-Averaged ADCP Observations at ~10 m, 2000



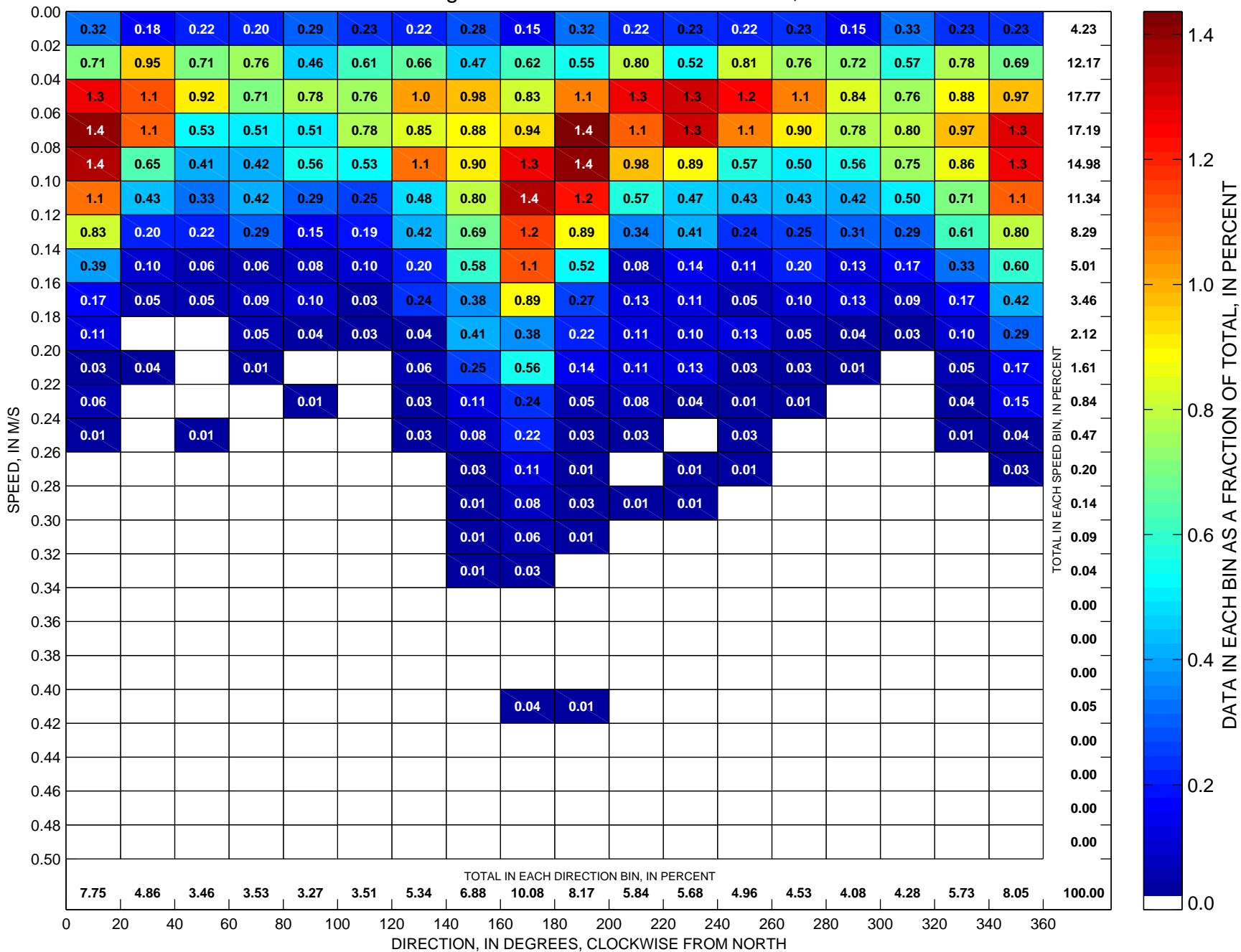
Total number of data points sorted is 9512, which is 109 percent of possible observations made during the full year.

## Currents at LT-B Sorted by Speed and Direction Hour-Averaged ADCP Observations at ~10 m, 2001



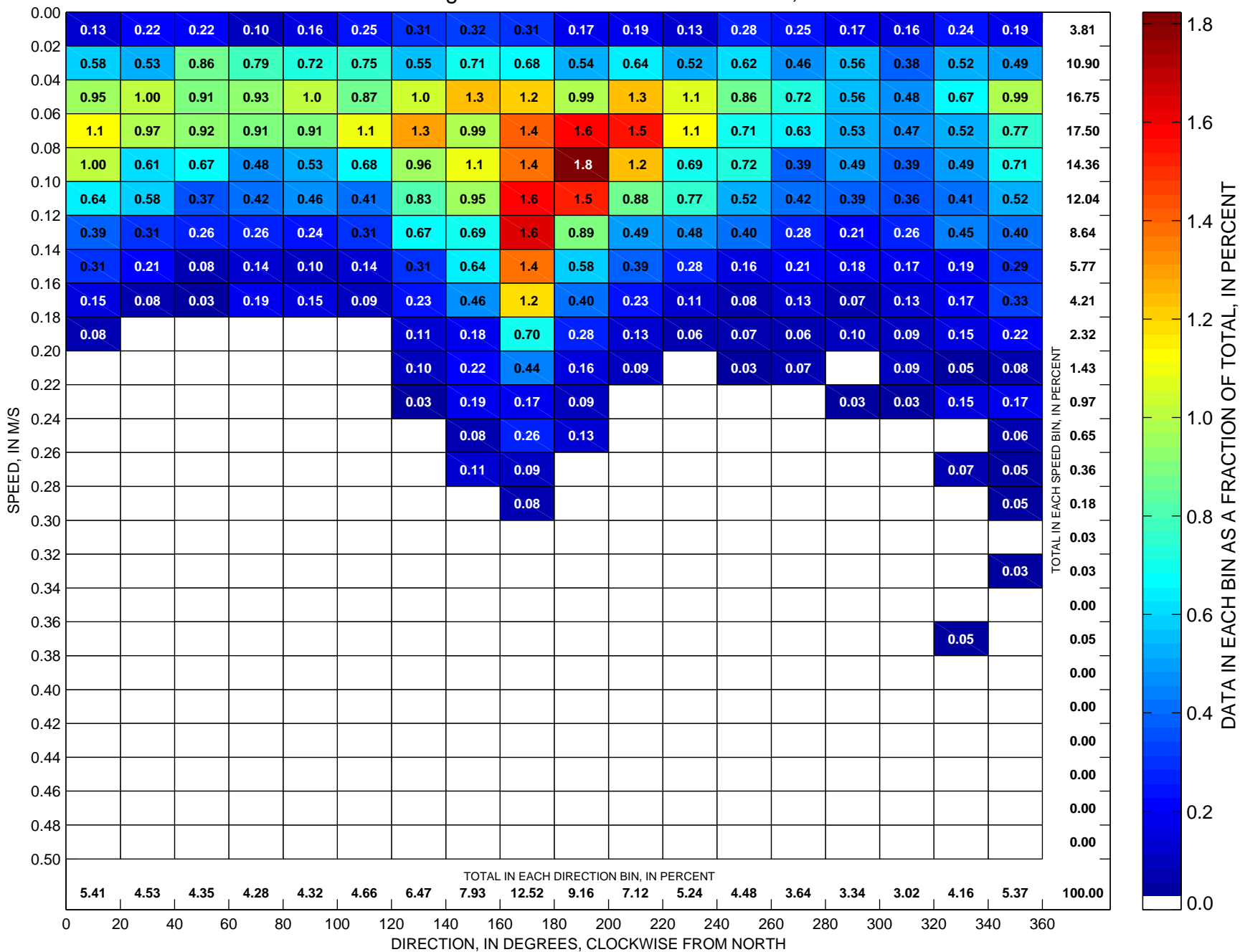
Total number of data points sorted is 9156, which is 105 percent of possible observations made during the full year.

### Currents at LT-B Sorted by Speed and Direction Hour-Averaged ADCP Observations at ~10 m, 2002



Total number of data points sorted is 7866, which is 90 percent of possible observations made during the full year.

### Currents at LT-B Sorted by Speed and Direction Hour-Averaged ADCP Observations at ~10 m, 2003



Total number of data points sorted is 8719, which is 100 percent of possible observations made during the full year.