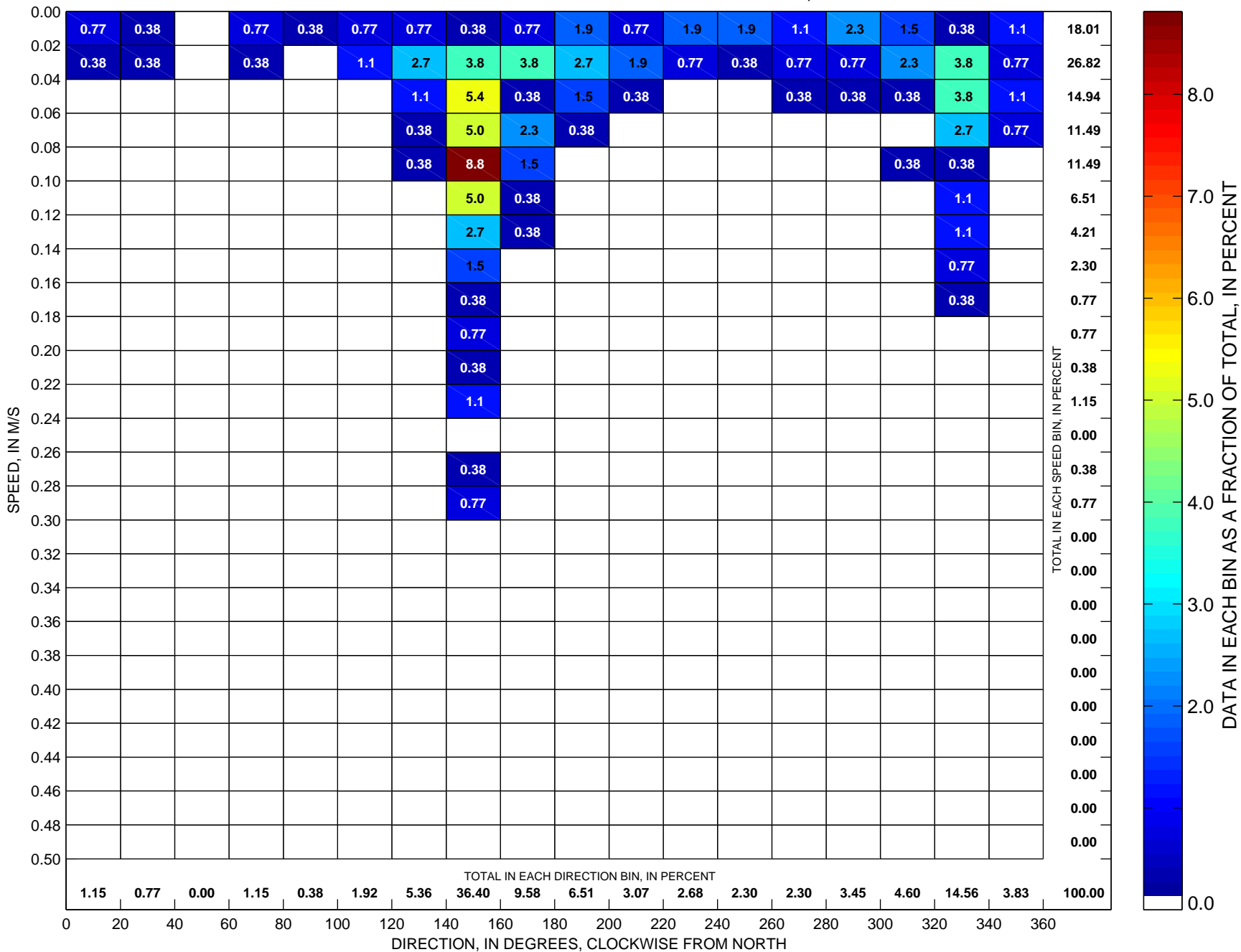
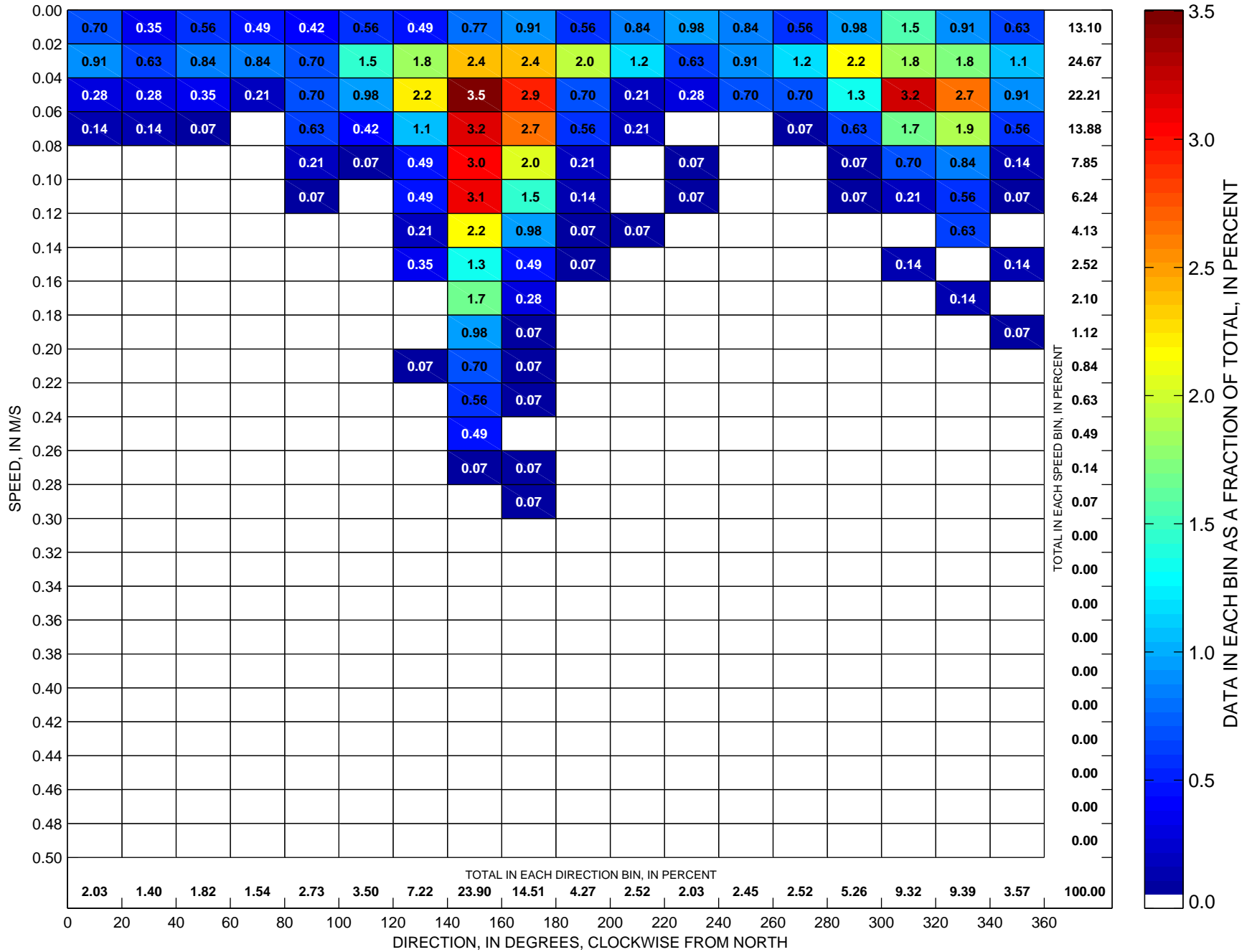


Currents at LT-B Sorted by Speed and Direction Low-Pass Filtered ADCP Observations at ~10 m, 1997



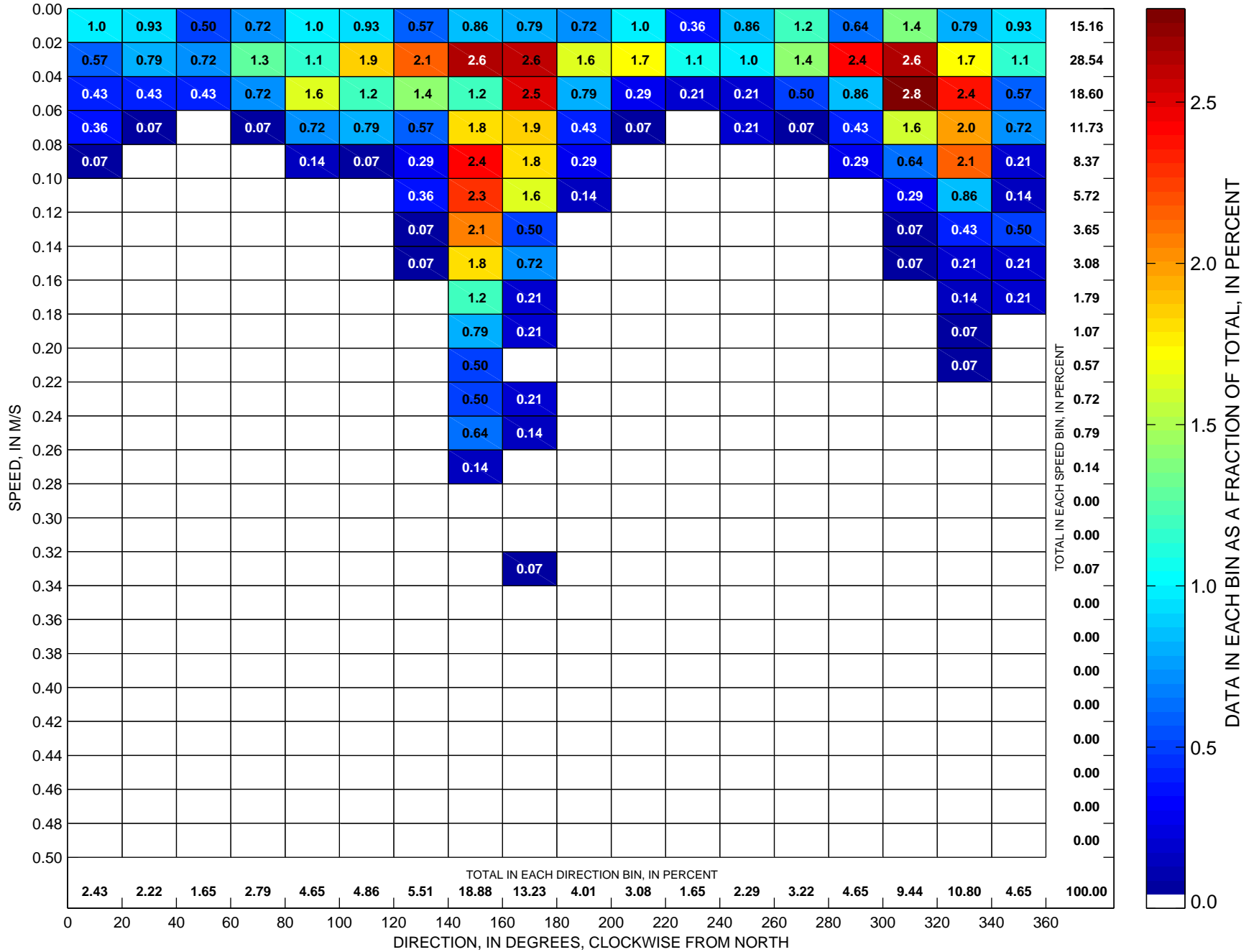
Total number of data points sorted is 261, which is 18 percent of possible observations made during the full year.

Currents at LT-B Sorted by Speed and Direction Low-Pass Filtered ADCP Observations at ~10 m, 1998



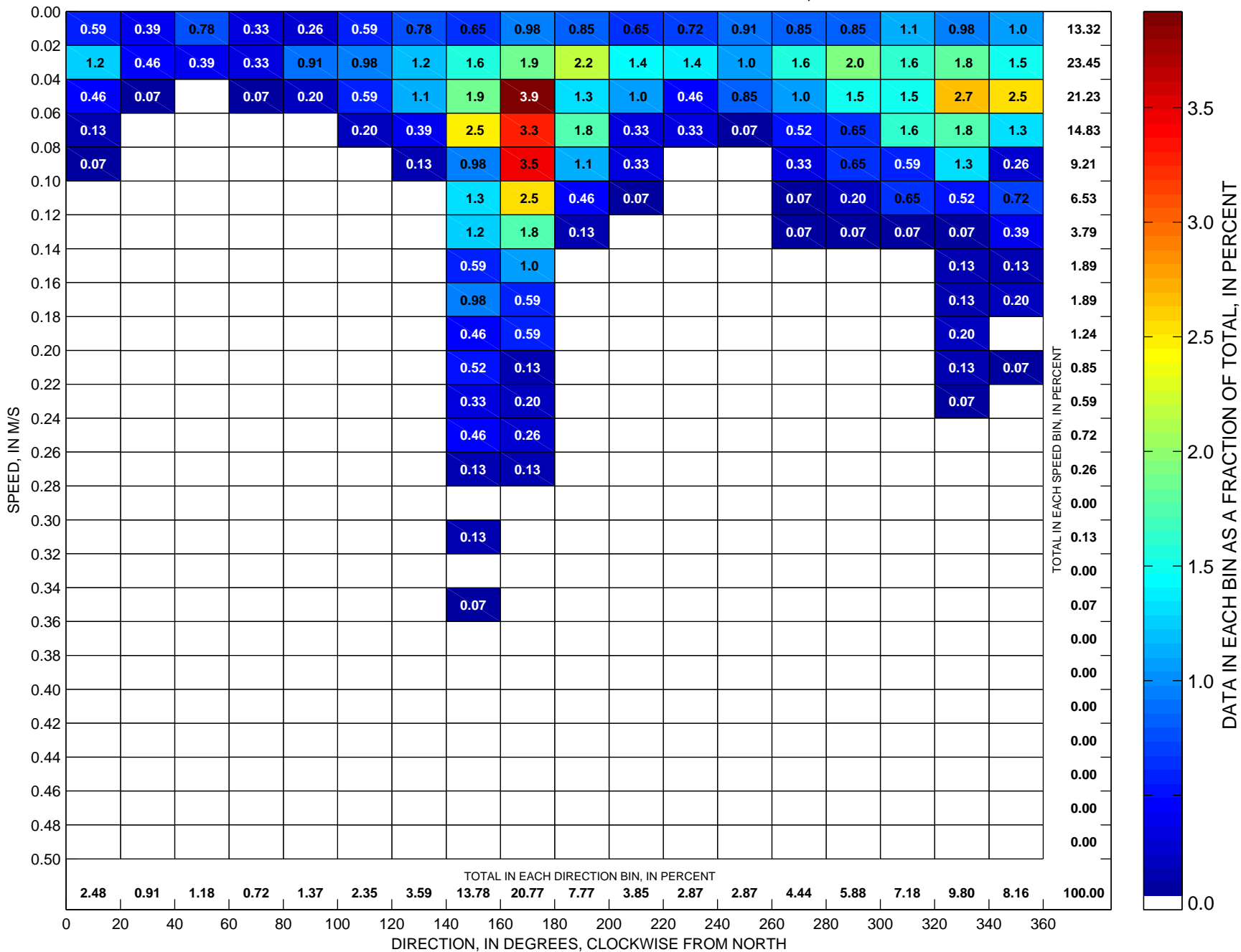
Total number of data points sorted is 1427, which is 98 percent of possible observations made during the full year.

Currents at LT-B Sorted by Speed and Direction Low-Pass Filtered ADCP Observations at ~10 m, 1999



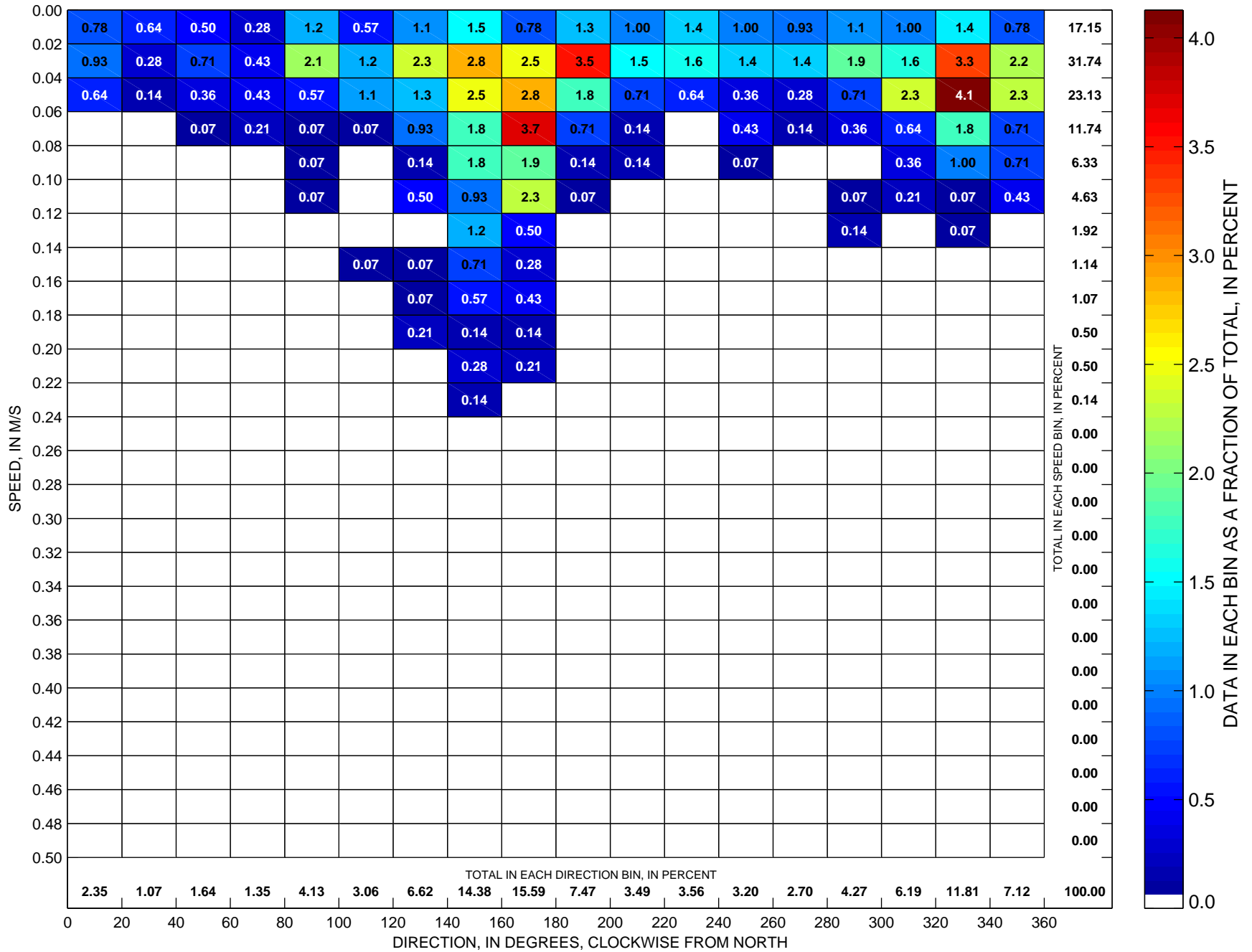
Total number of data points sorted is 1398, which is 96 percent of possible observations made during the full year.

Currents at LT-B Sorted by Speed and Direction Low-Pass Filtered ADCP Observations at ~10 m, 2000



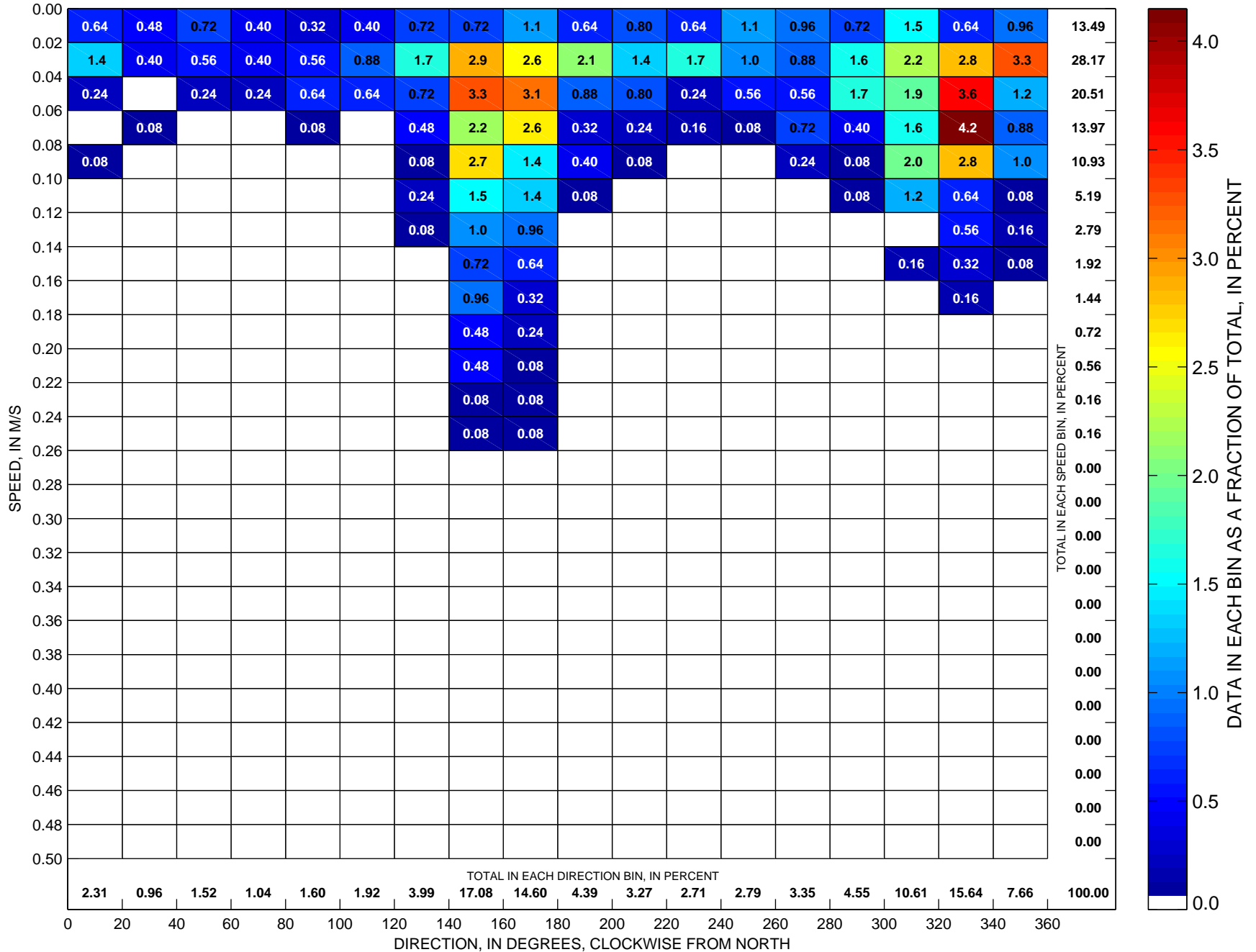
Total number of data points sorted is 1531, which is 105 percent of possible observations made during the full year.

Currents at LT-B Sorted by Speed and Direction Low-Pass Filtered ADCP Observations at ~10 m, 2001



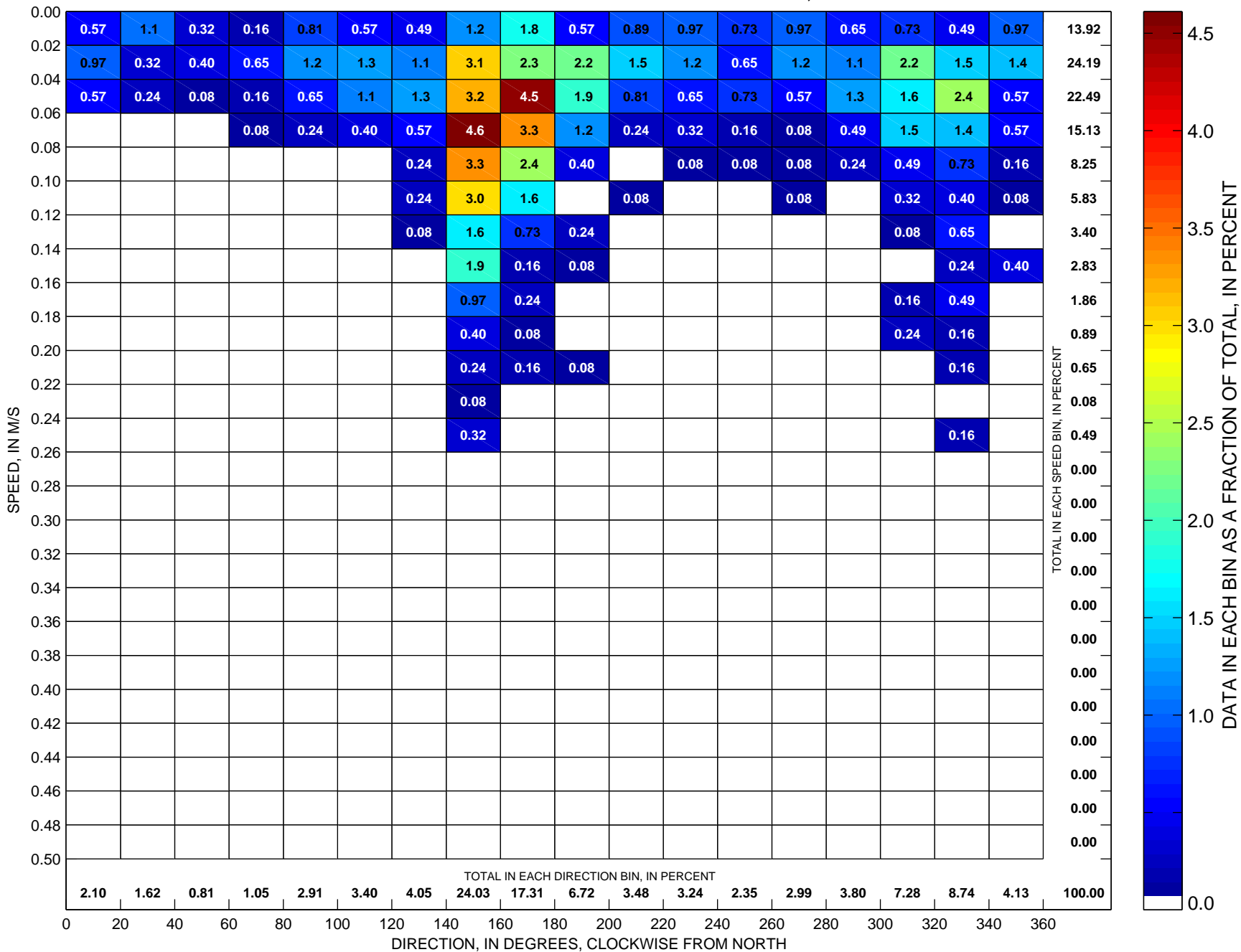
Total number of data points sorted is 1405, which is 96 percent of possible observations made during the full year.

Currents at LT-B Sorted by Speed and Direction Low-Pass Filtered ADCP Observations at ~10 m, 2002



Total number of data points sorted is 1253, which is 86 percent of possible observations made during the full year.

Currents at LT-B Sorted by Speed and Direction Low-Pass Filtered ADCP Observations at ~10 m, 2003



Total number of data points sorted is 1236, which is 85 percent of possible observations made during the full year.