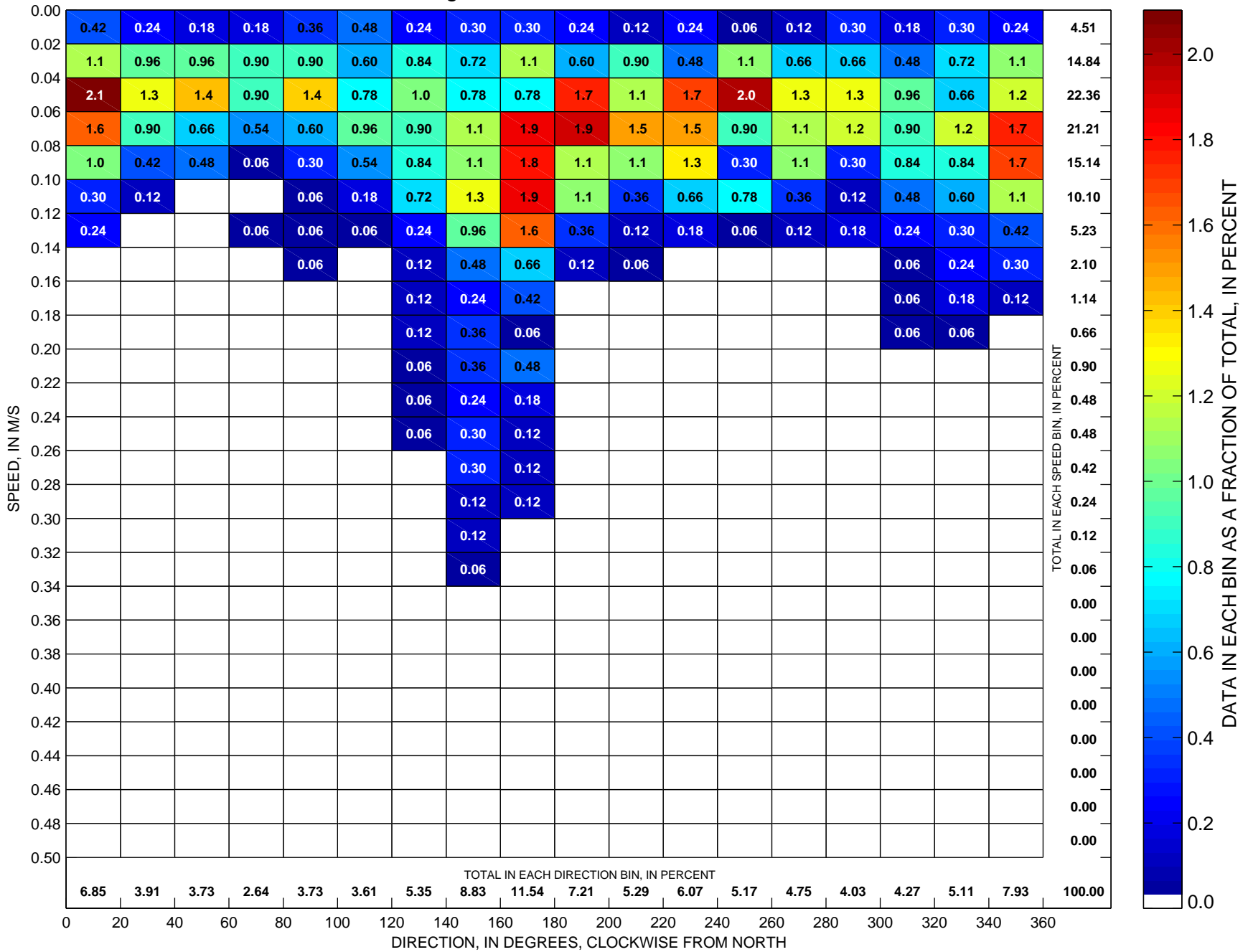
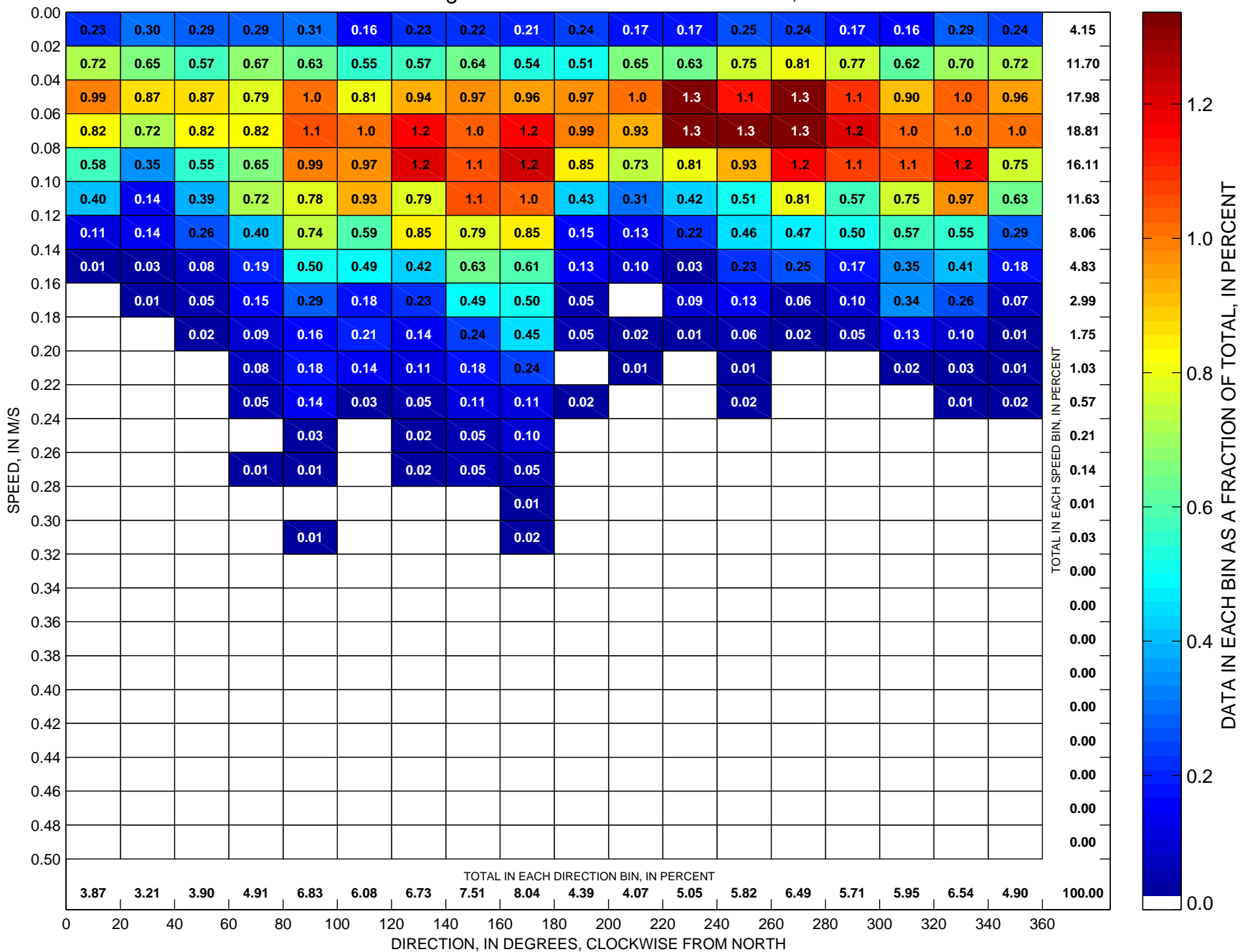


Currents at LT-B Sorted by Speed and Direction Hour-Averaged ADCP Observations at ~17 m, 1997



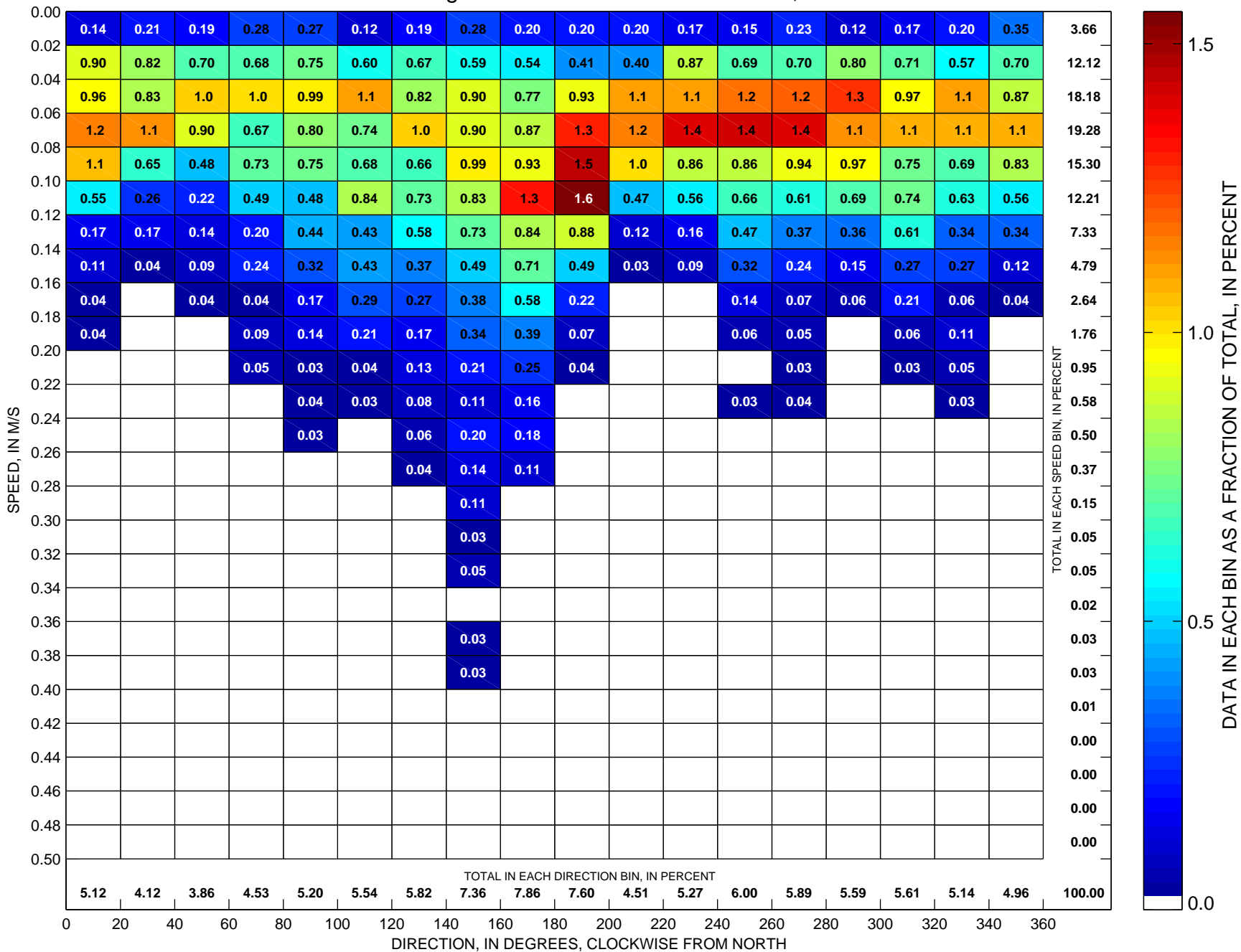
Total number of data points sorted is 1664, which is 19 percent of possible observations made during the full year.

Currents at LT-B Sorted by Speed and Direction Hour-Averaged ADCP Observations at ~17 m, 1998



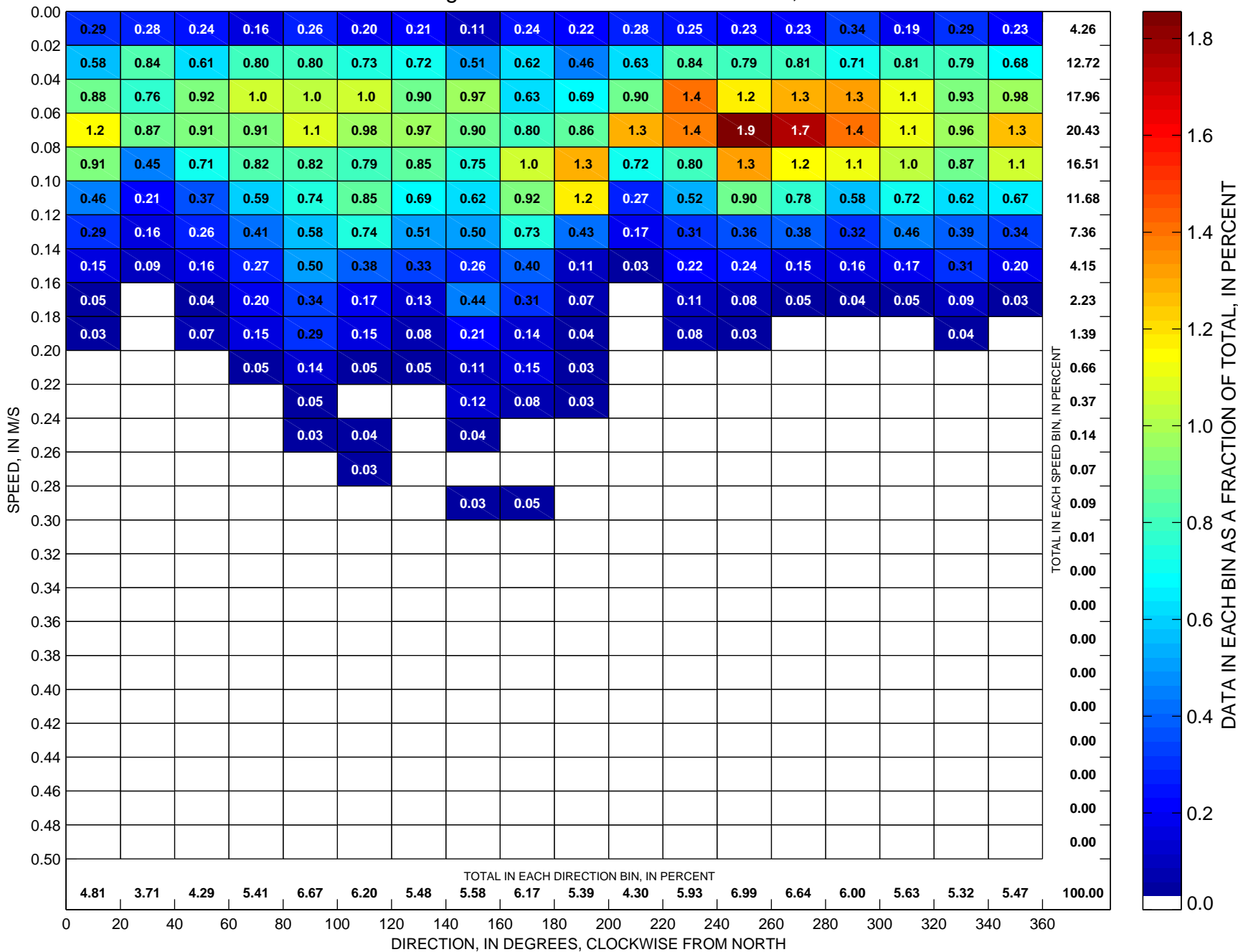
Total number of data points sorted is 8752, which is 100 percent of possible observations made during the full year.

Currents at LT-B Sorted by Speed and Direction Hour-Averaged ADCP Observations at ~17 m, 2000



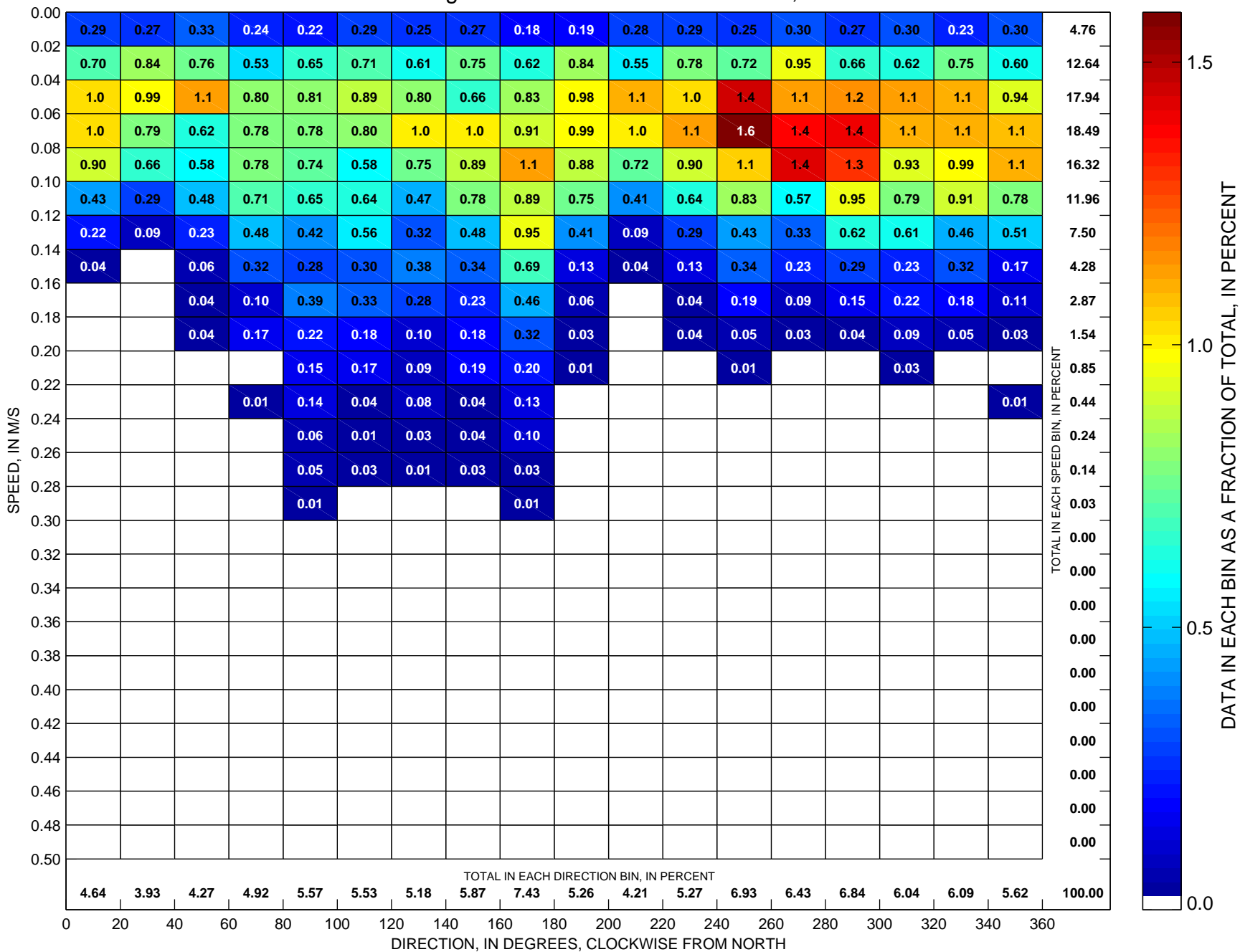
Total number of data points sorted is 9512, which is 109 percent of possible observations made during the full year.

Currents at LT-B Sorted by Speed and Direction Hour-Averaged ADCP Observations at ~17 m, 2001



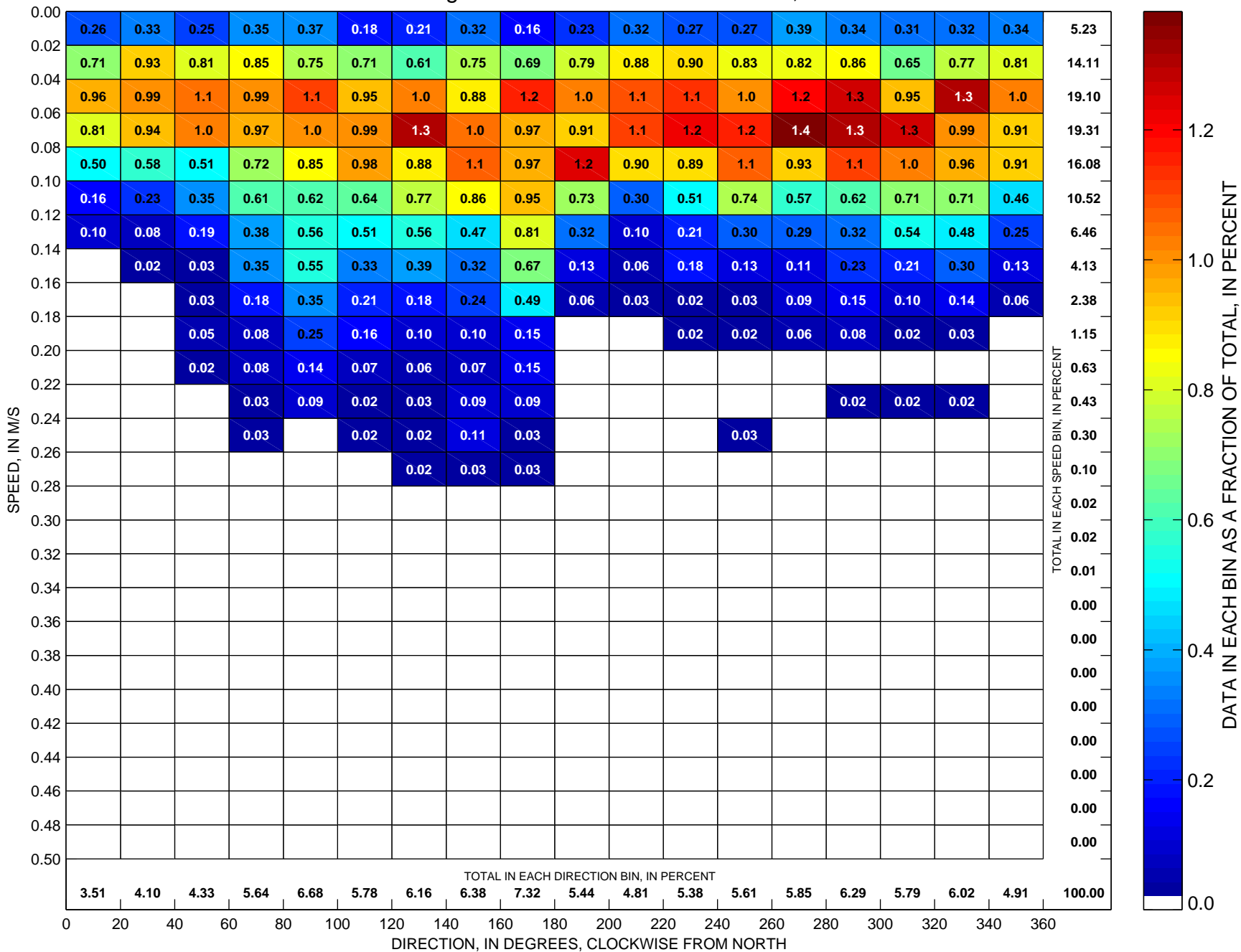
Total number of data points sorted is 9160, which is 105 percent of possible observations made during the full year.

Currents at LT-B Sorted by Speed and Direction Hour-Averaged ADCP Observations at ~17 m, 2002



Total number of data points sorted is 7870, which is 90 percent of possible observations made during the full year.

Currents at LT-B Sorted by Speed and Direction Hour-Averaged ADCP Observations at ~17 m, 2003



Total number of data points sorted is 8755, which is 100 percent of possible observations made during the full year.