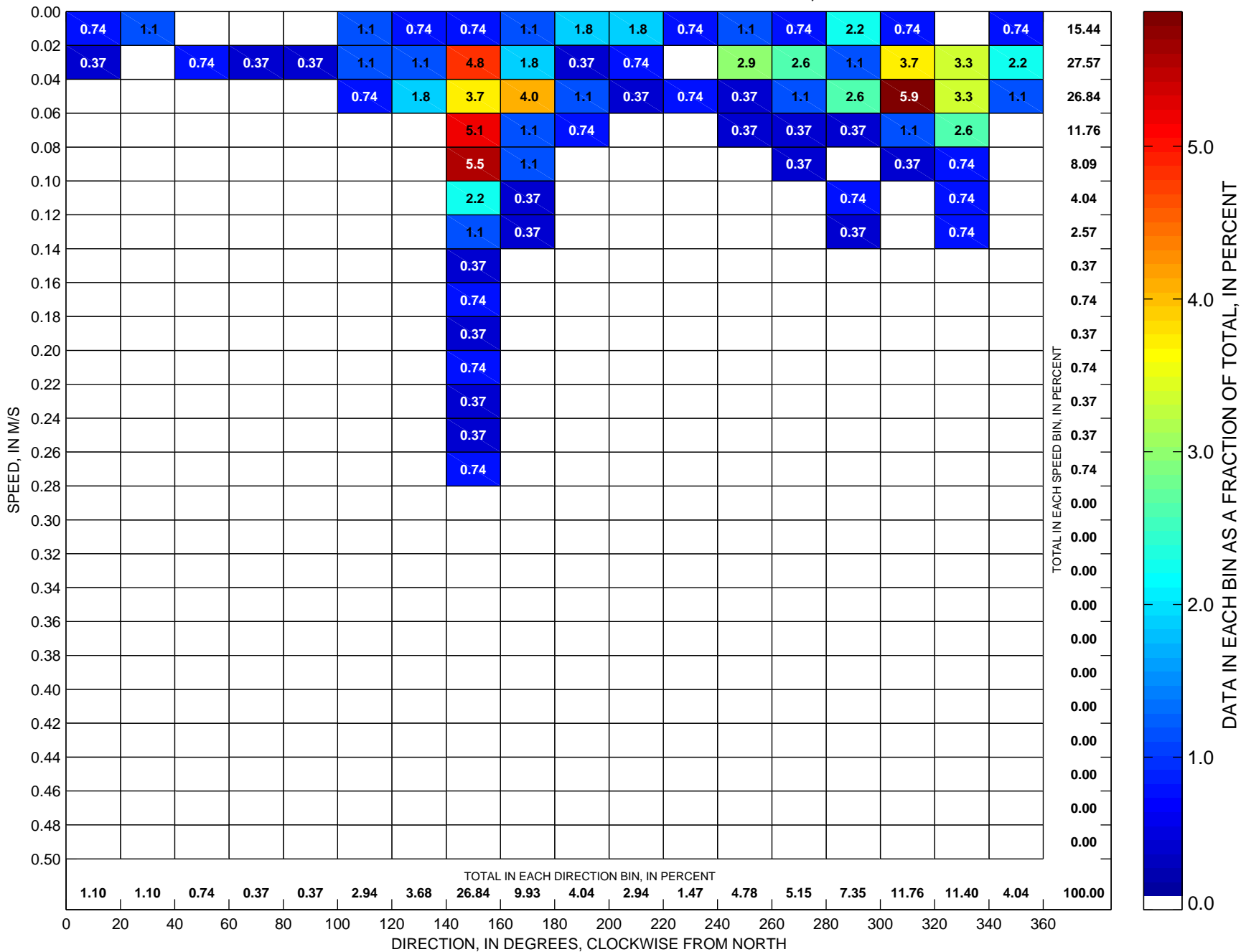
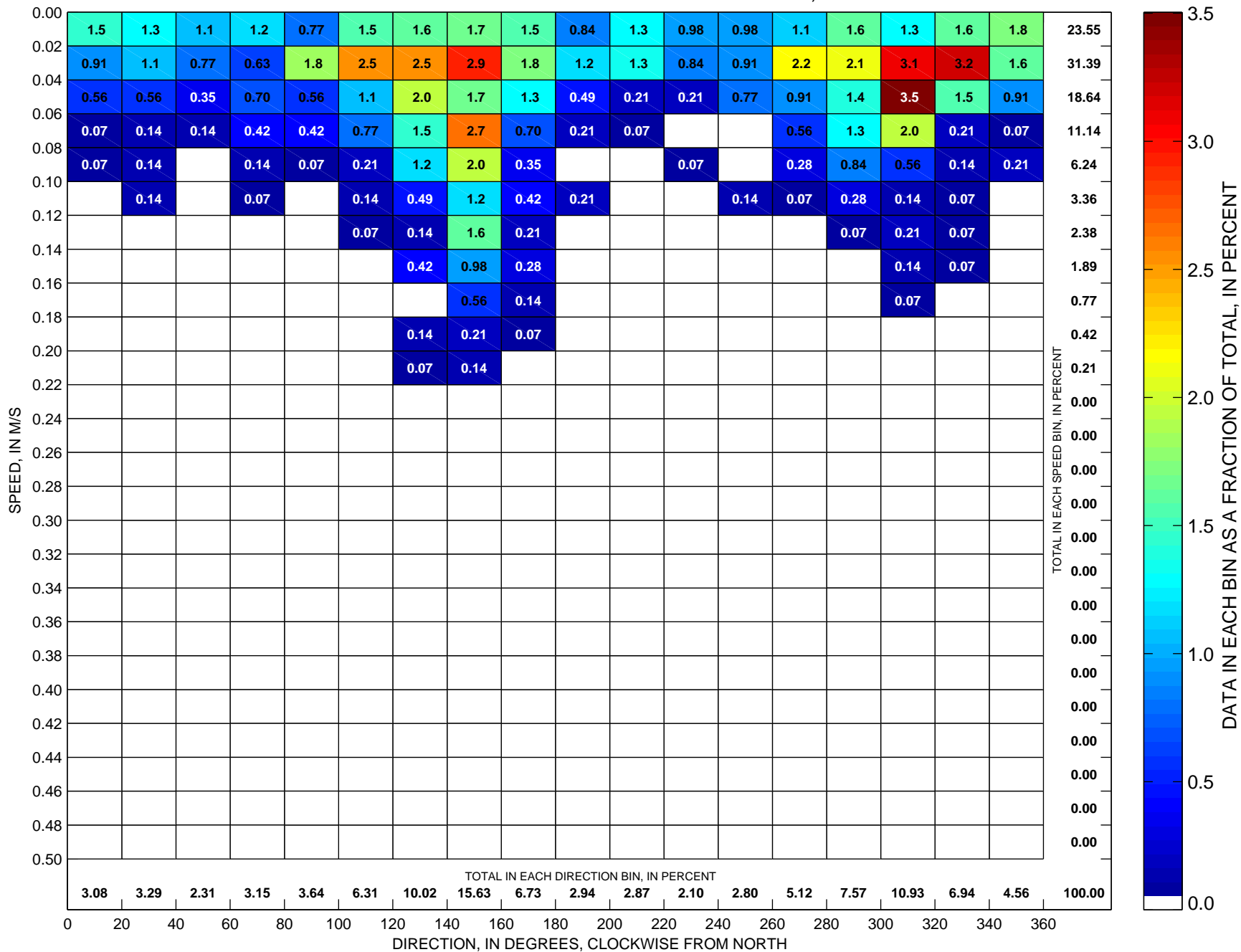


Currents at LT-B Sorted by Speed and Direction Low-Pass-Filtered ADCP Observations at ~17 m, 1997



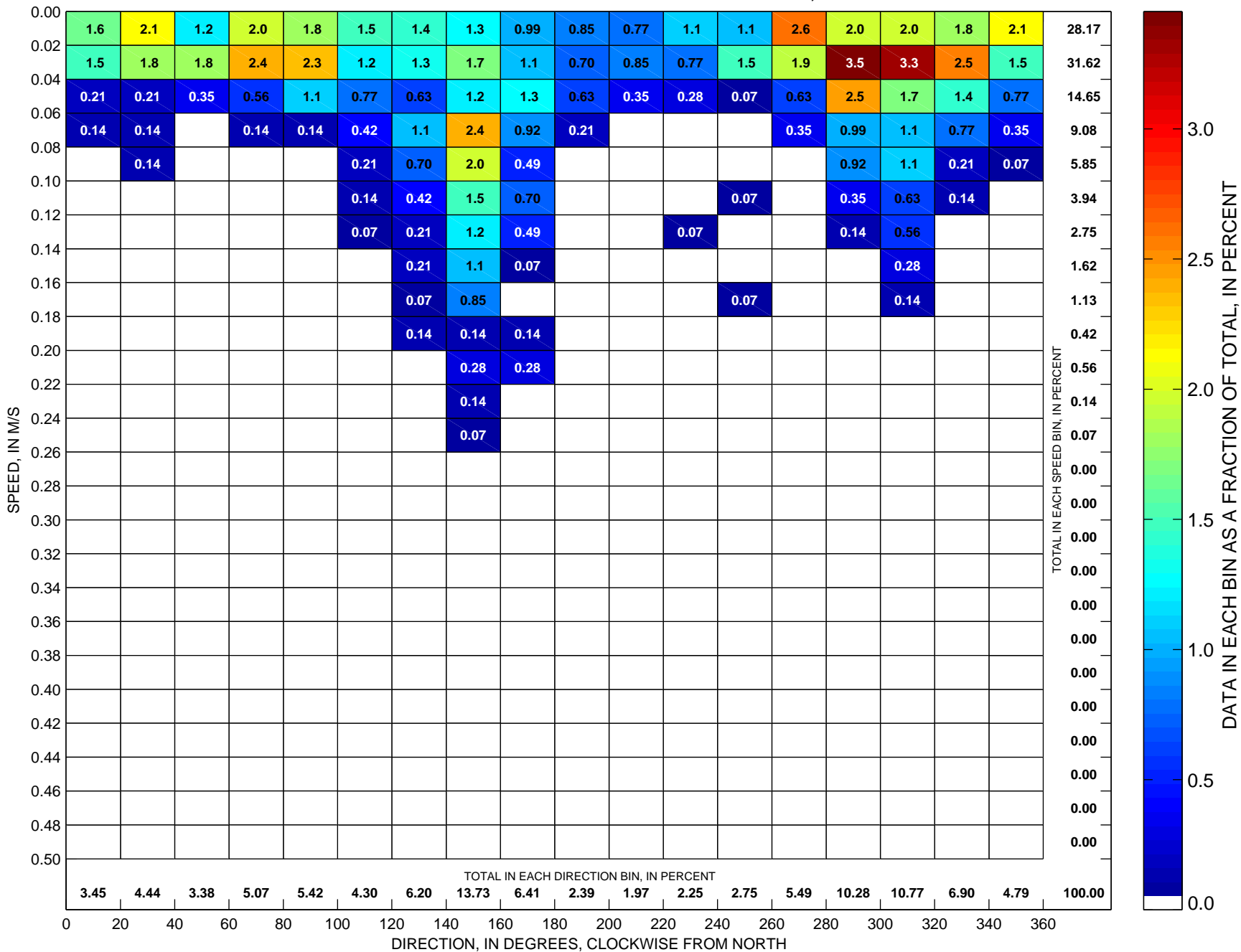
Total number of data points sorted is 272, which is 19 percent of possible observations made during the full year.

Currents at LT-B Sorted by Speed and Direction Low-Pass-Filtered ADCP Observations at ~17 m, 1998



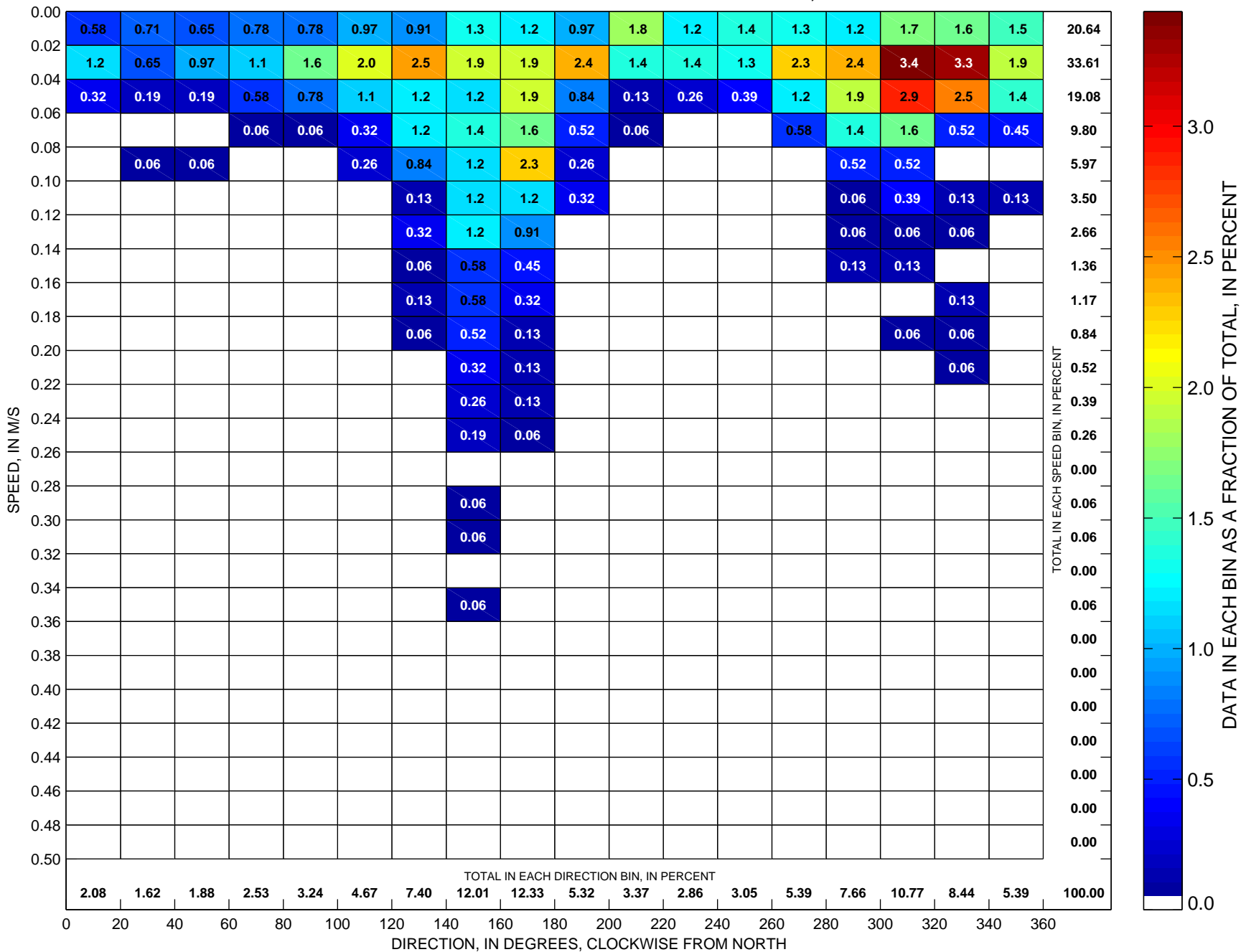
Total number of data points sorted is 1427, which is 98 percent of possible observations made during the full year.

Currents at LT-B Sorted by Speed and Direction Low-Pass-Filtered ADCP Observations at ~17 m, 1999



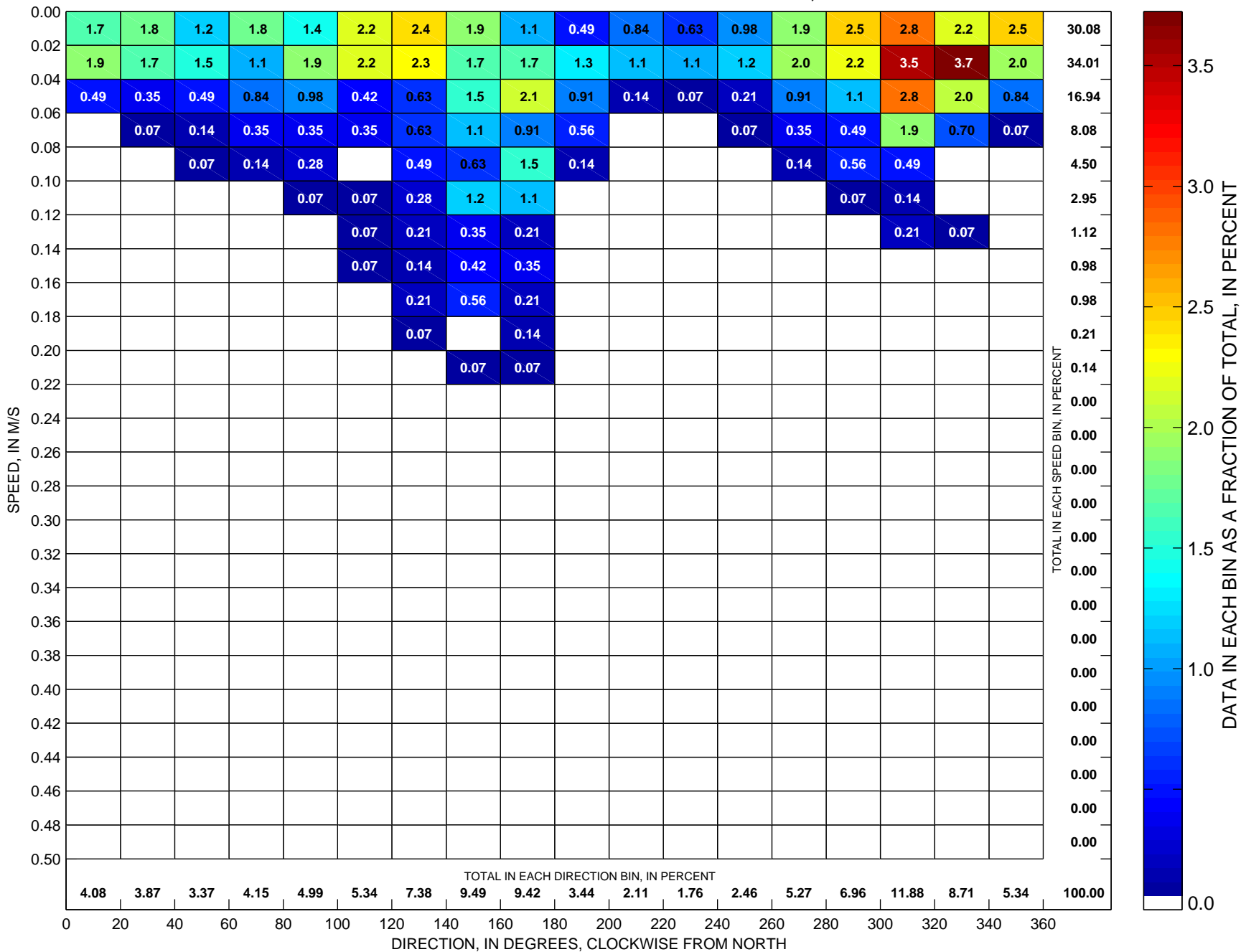
Total number of data points sorted is 1420, which is 97 percent of possible observations made during the full year.

Currents at LT-B Sorted by Speed and Direction Low-Pass-Filtered ADCP Observations at ~17 m, 2000



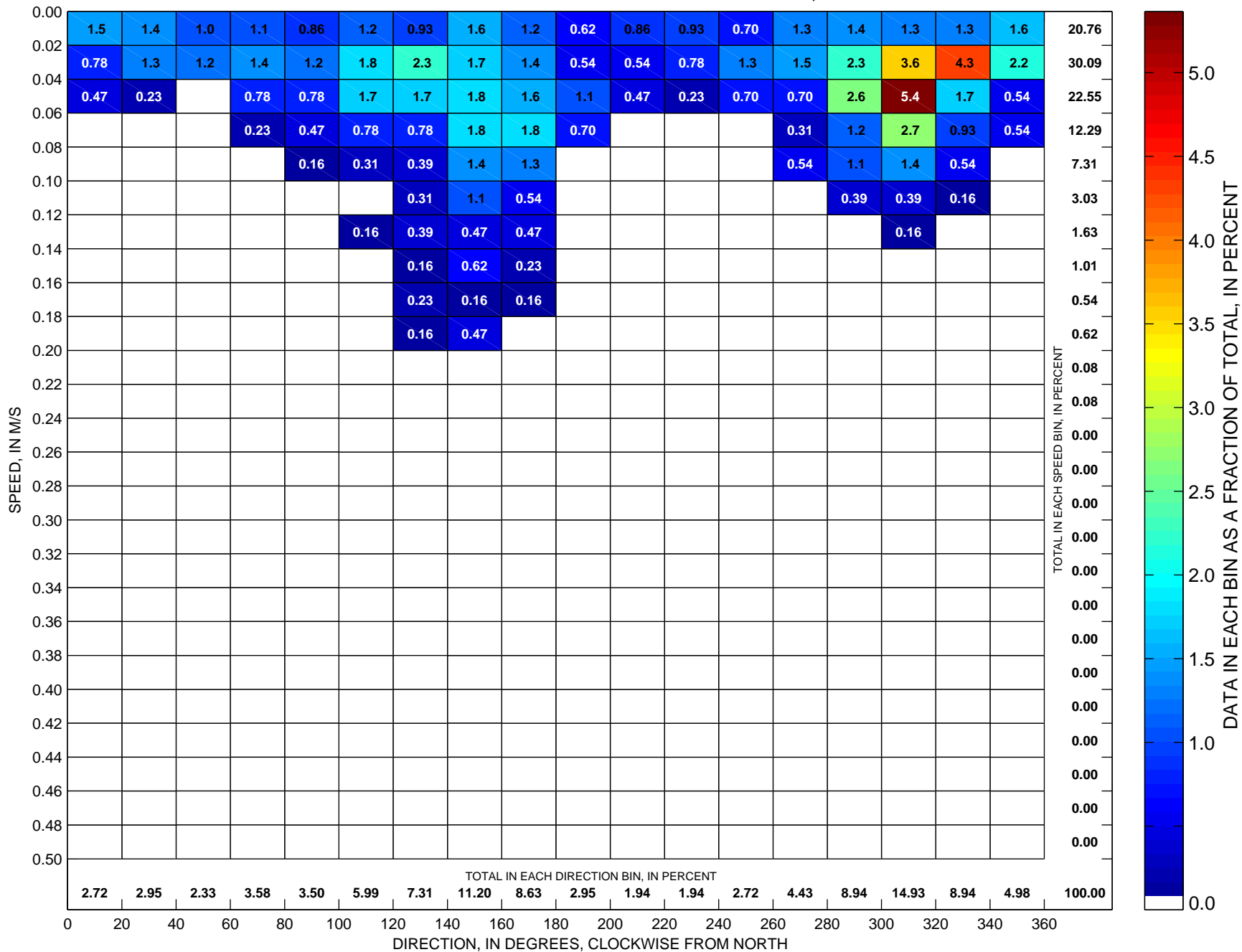
Total number of data points sorted is 1541, which is 106 percent of possible observations made during the full year.

Currents at LT-B Sorted by Speed and Direction Low-Pass-Filtered ADCP Observations at ~17 m, 2001



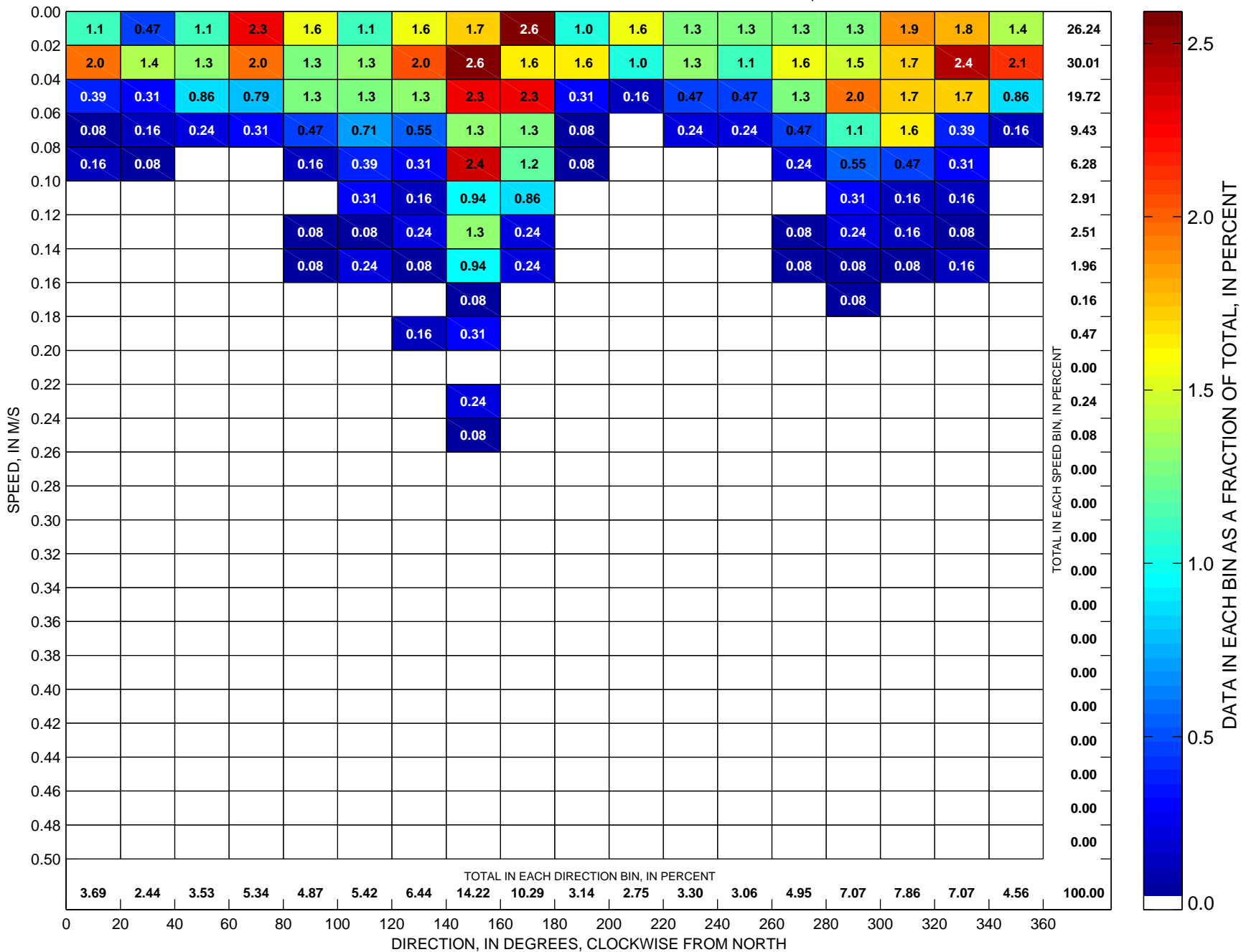
Total number of data points sorted is 1423, which is 97 percent of possible observations made during the full year.

Currents at LT-B Sorted by Speed and Direction Low-Pass-Filtered ADCP Observations at ~17 m, 2002



Total number of data points sorted is 1286, which is 88 percent of possible observations made during the full year.

Currents at LT-B Sorted by Speed and Direction Low-Pass-Filtered ADCP Observations at ~17 m, 2003



Total number of data points sorted is 1273, which is 87 percent of possible observations made during the full year.