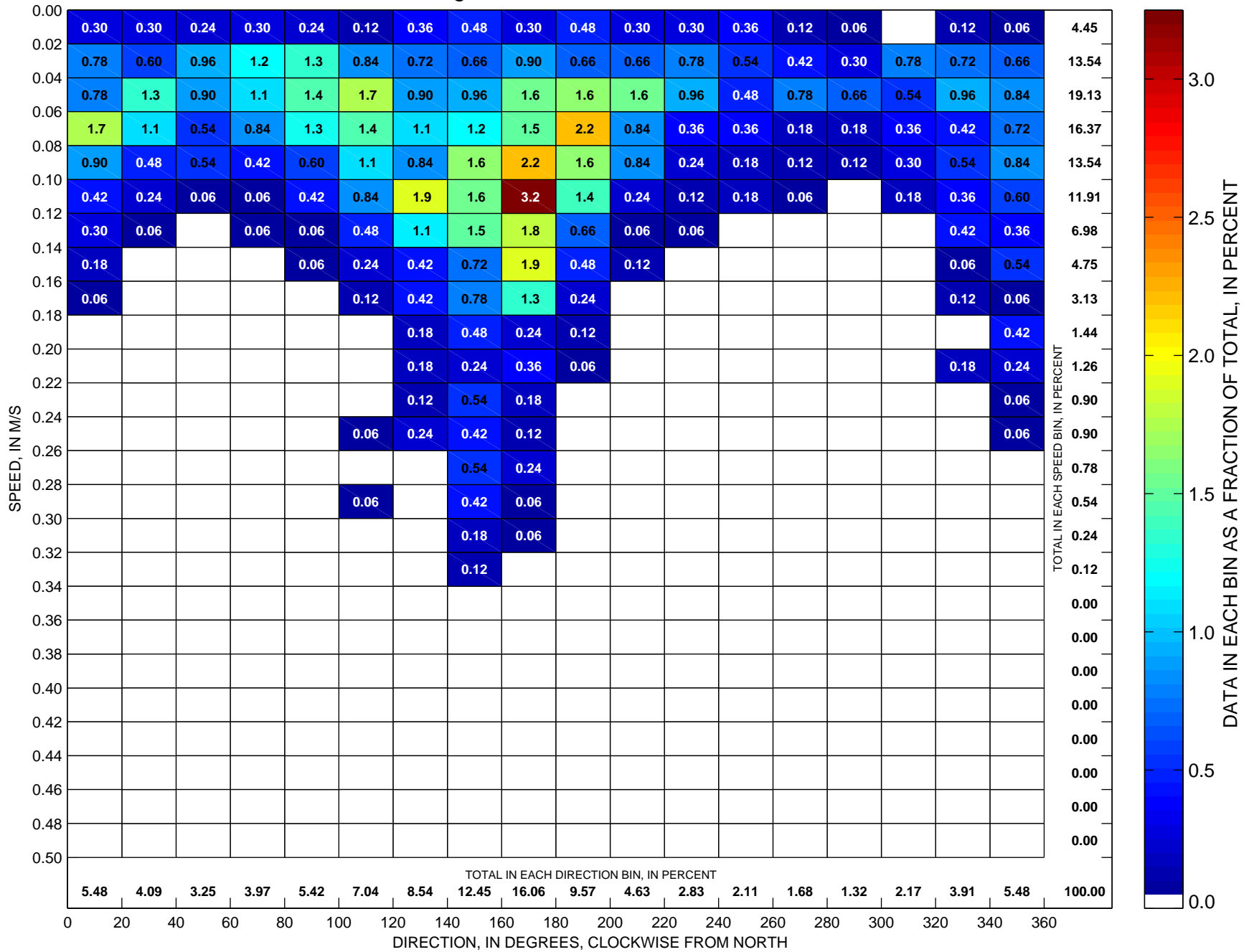
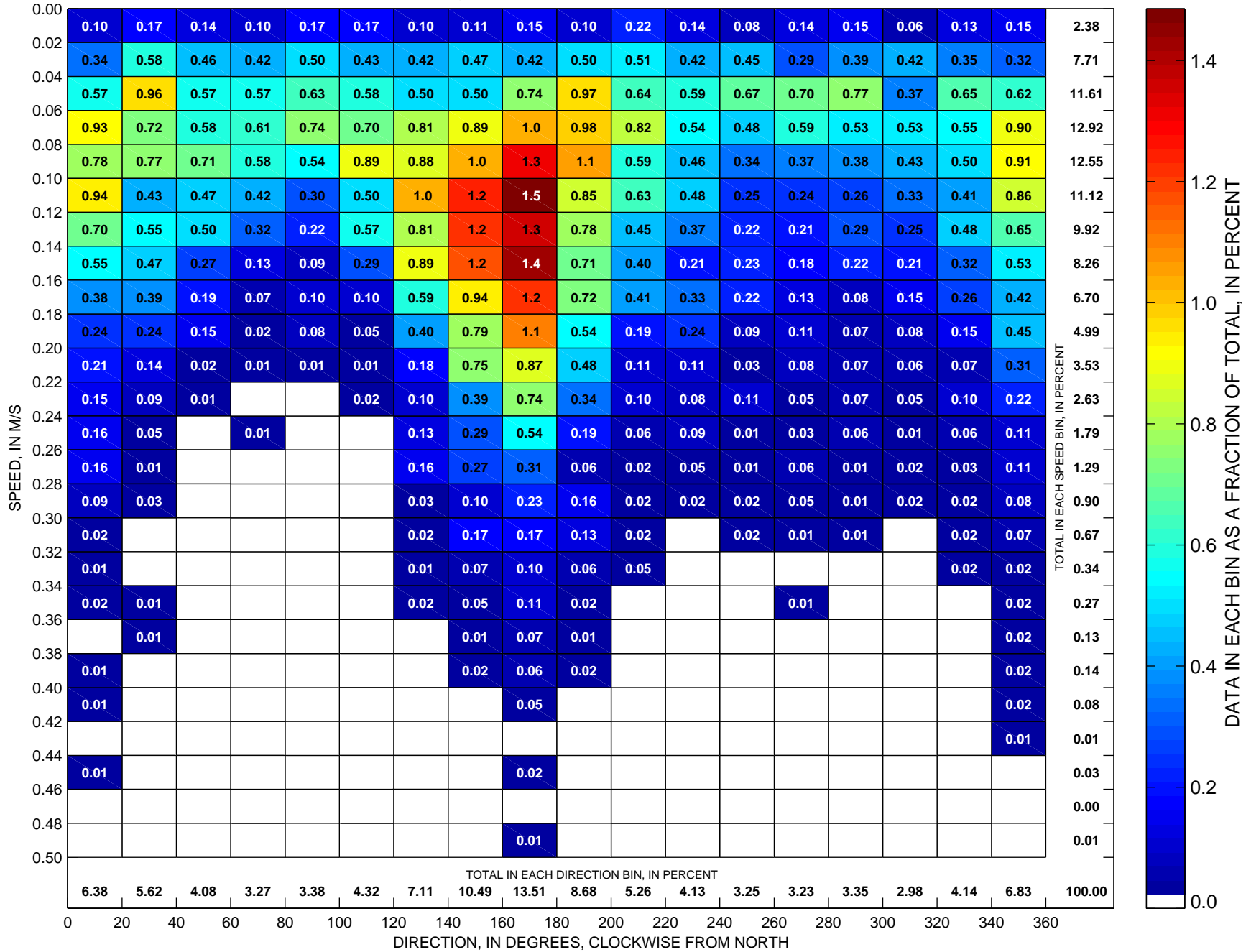


Currents at LT-B Sorted by Speed and Direction Hour-Averaged ADCP Observations at ~5 m, 1997



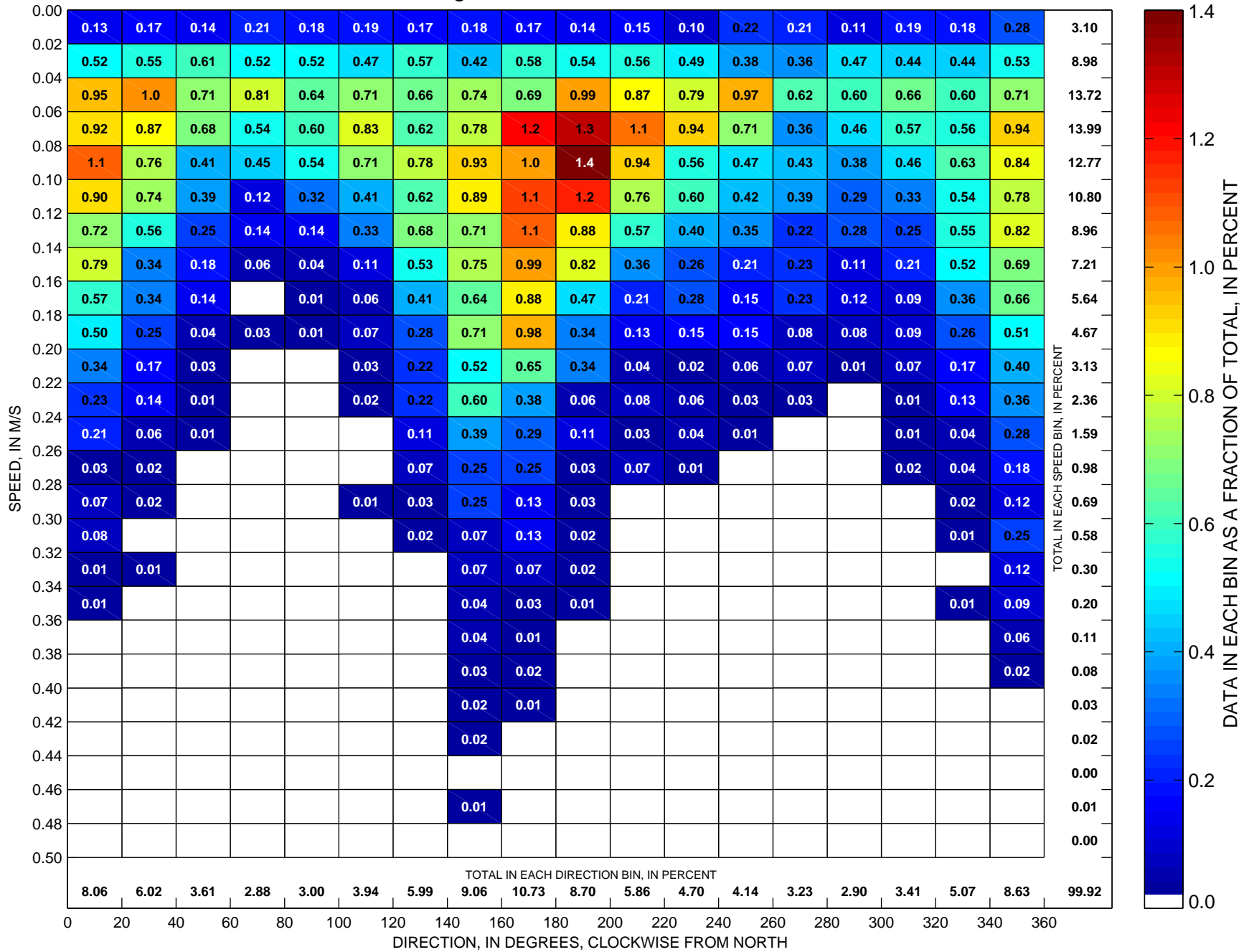
Total number of data points sorted is 1662, which is 19 percent of possible observations made during the full year.

Currents at LT-B Sorted by Speed and Direction Hour-Averaged ADCP Observations at ~5 m, 1998



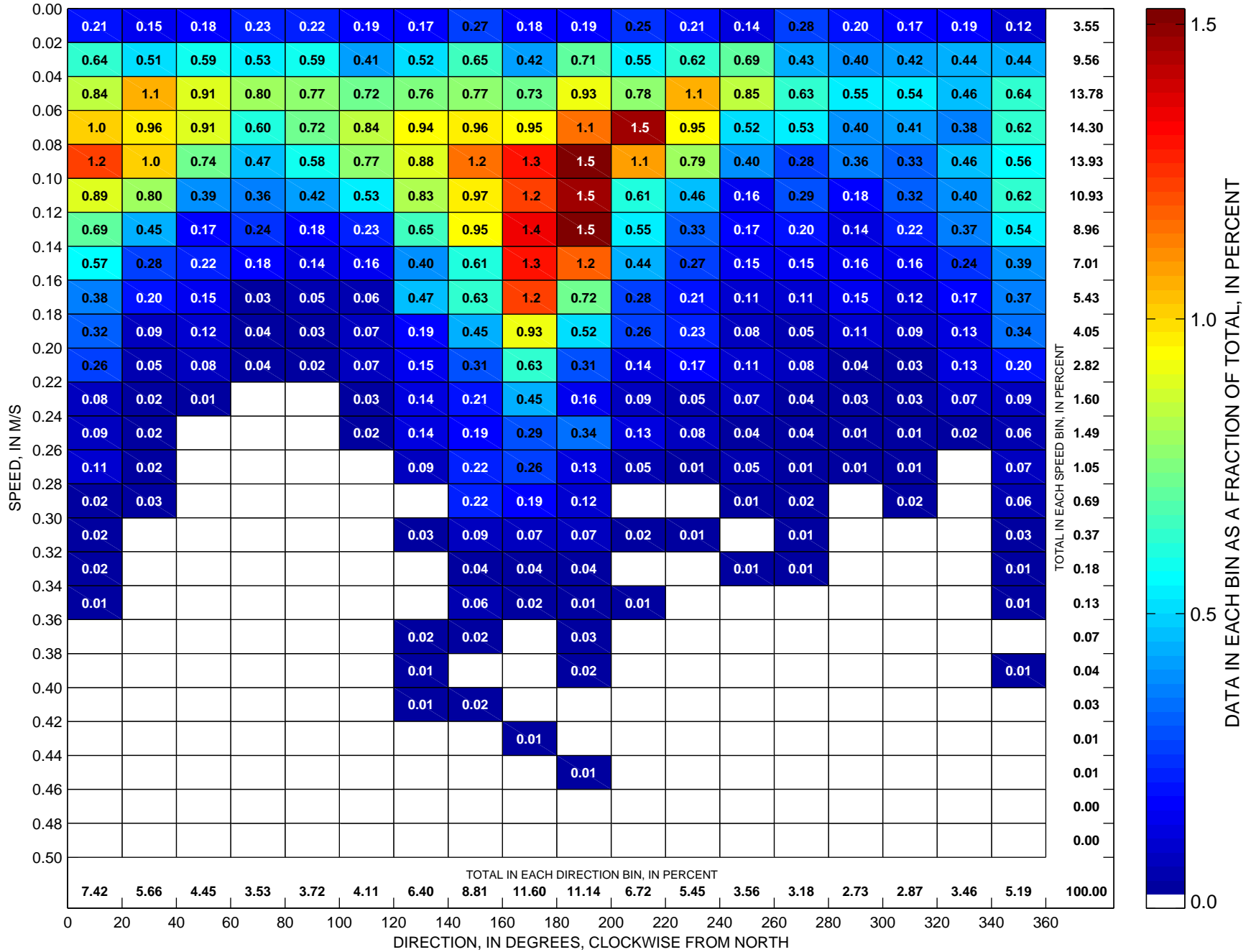
Total number of data points sorted is 8751, which is 100 percent of possible observations made during the full year.

Currents at LT-B Sorted by Speed and Direction Hour-Averaged ADCP Observations at ~5 m, 1999



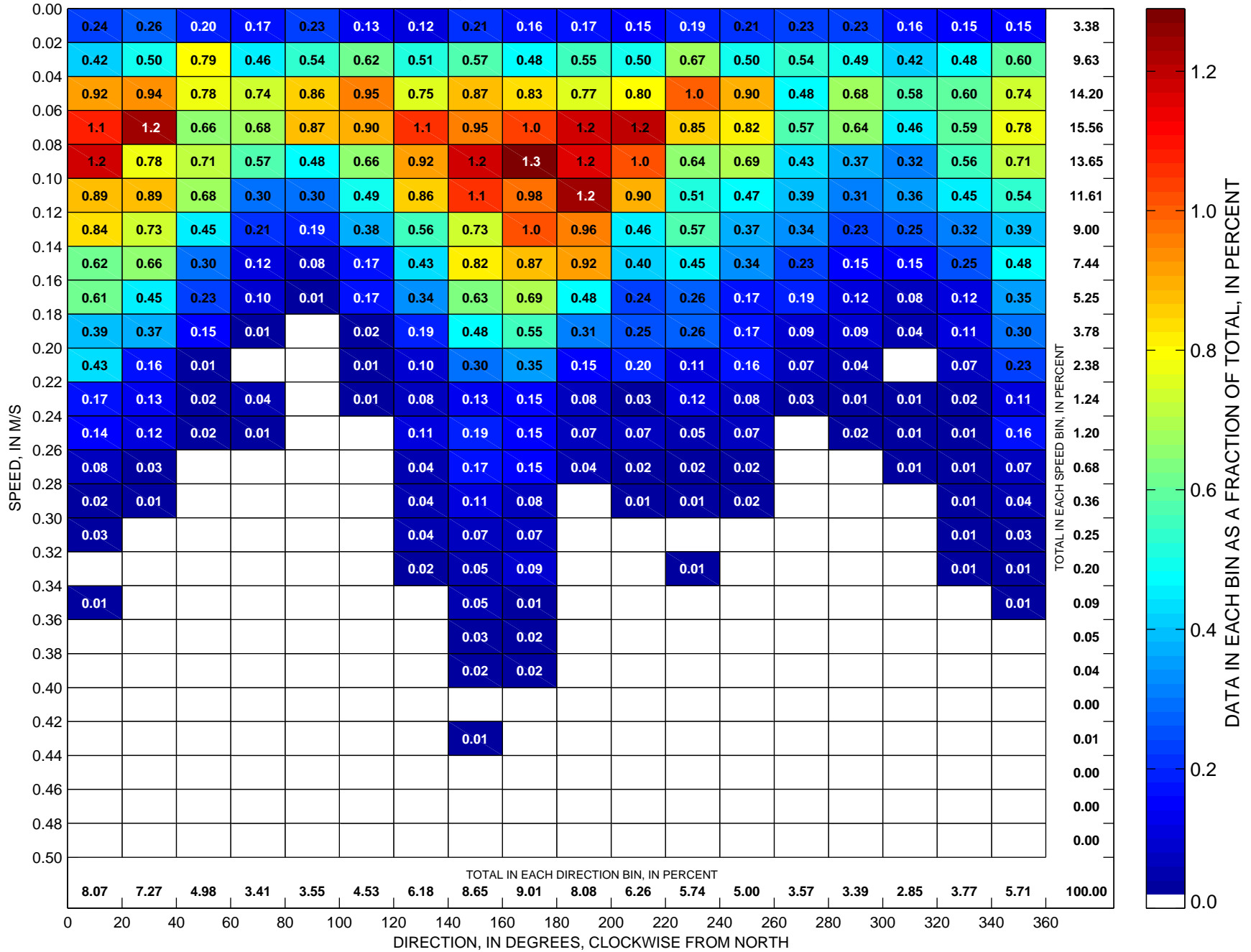
Total number of data points sorted is 9066, which is 103 percent of possible observations made during the full year.

Currents at LT-B Sorted by Speed and Direction Hour-Averaged ADCP Observations at ~5 m, 2000



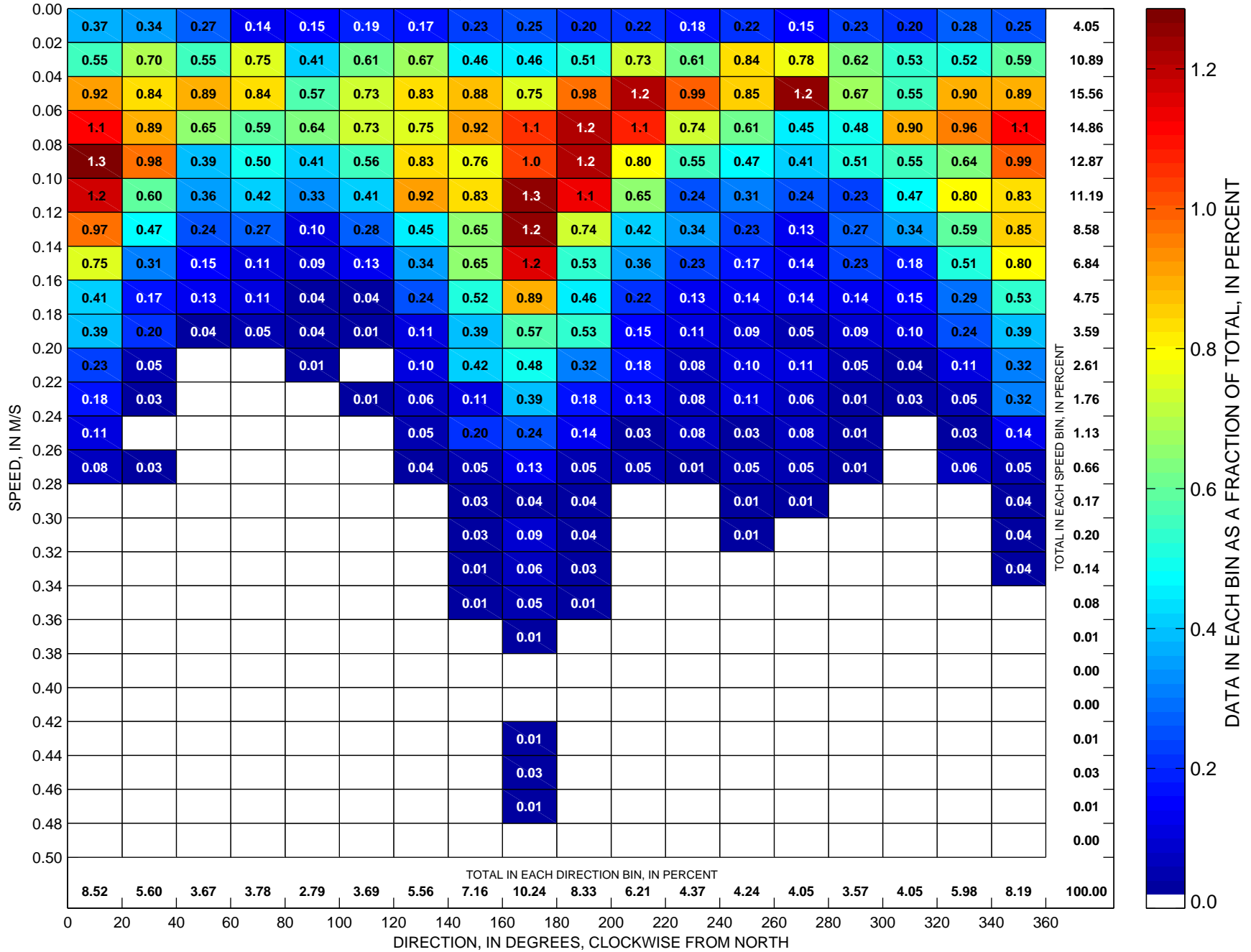
Total number of data points sorted is 9499, which is 108 percent of possible observations made during the full year.

Currents at LT-B Sorted by Speed and Direction Hour-Averaged ADCP Observations at ~5 m, 2001



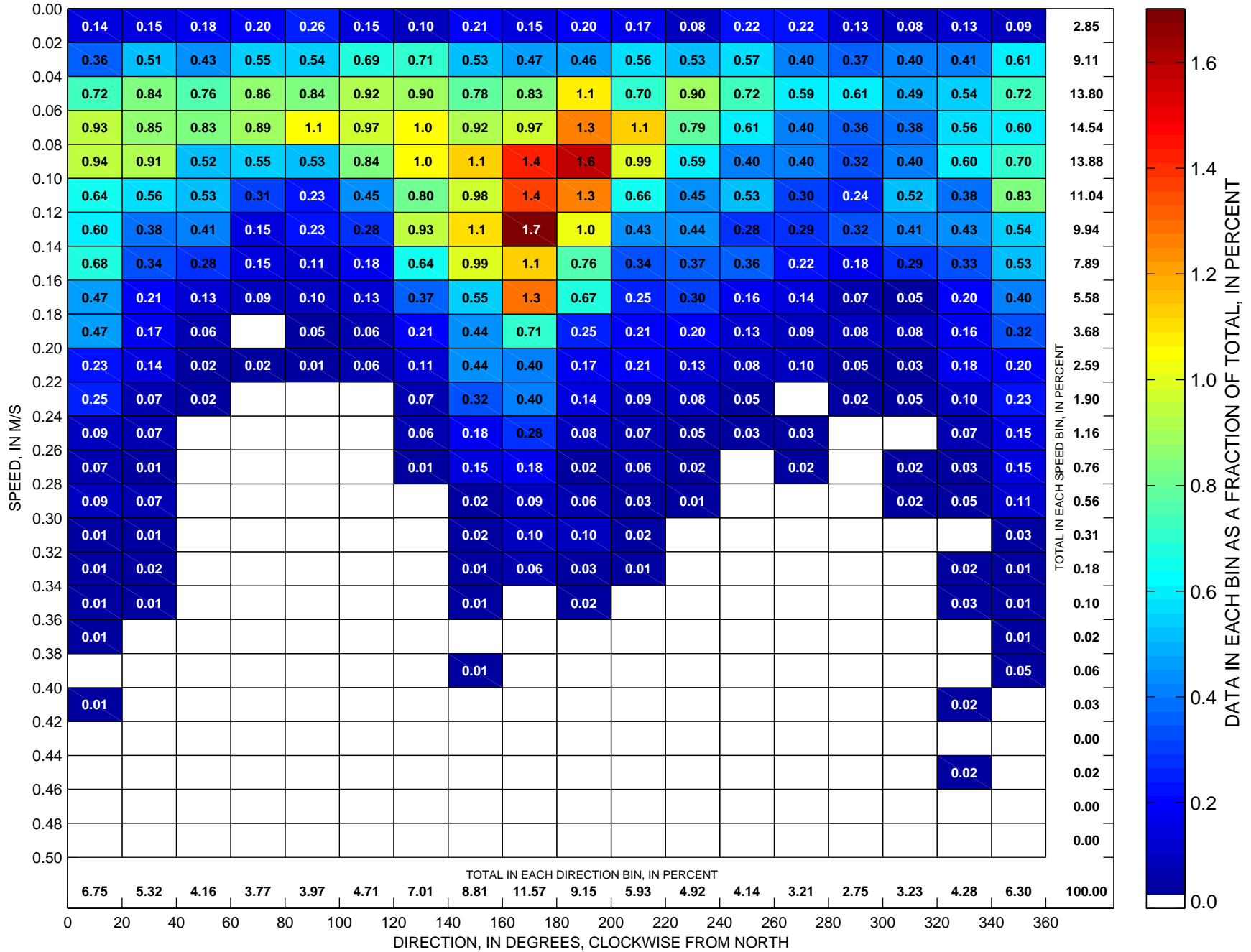
Total number of data points sorted is 9149, which is 104 percent of possible observations made during the full year.

Currents at LT-B Sorted by Speed and Direction Hour-Averaged ADCP Observations at ~5 m, 2002



Total number of data points sorted is 7853, which is 90 percent of possible observations made during the full year.

Currents at LT-B Sorted by Speed and Direction Hour-Averaged ADCP Observations at ~5 m, 2003



Total number of data points sorted is 8696, which is 99 percent of possible observations made during the full year.