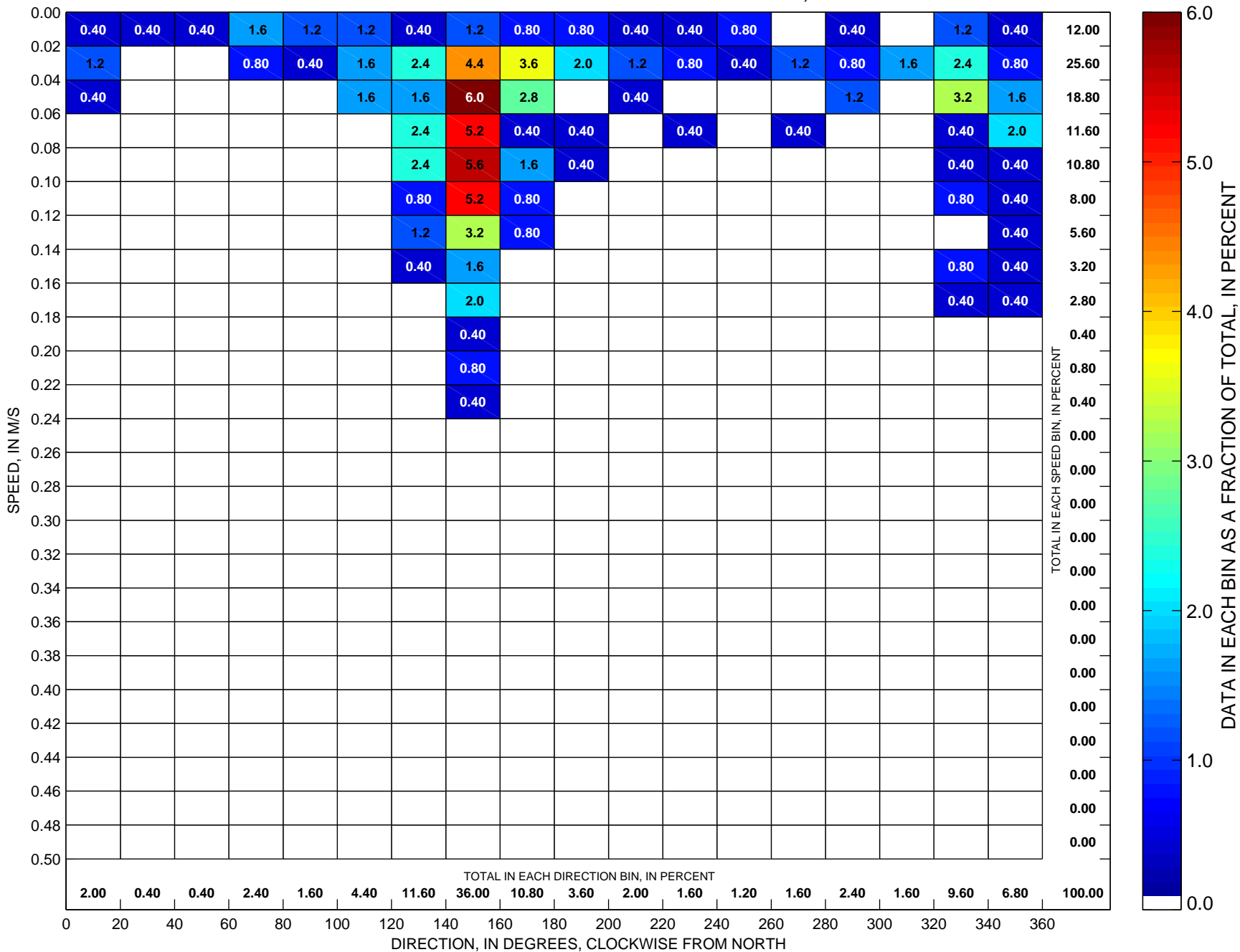
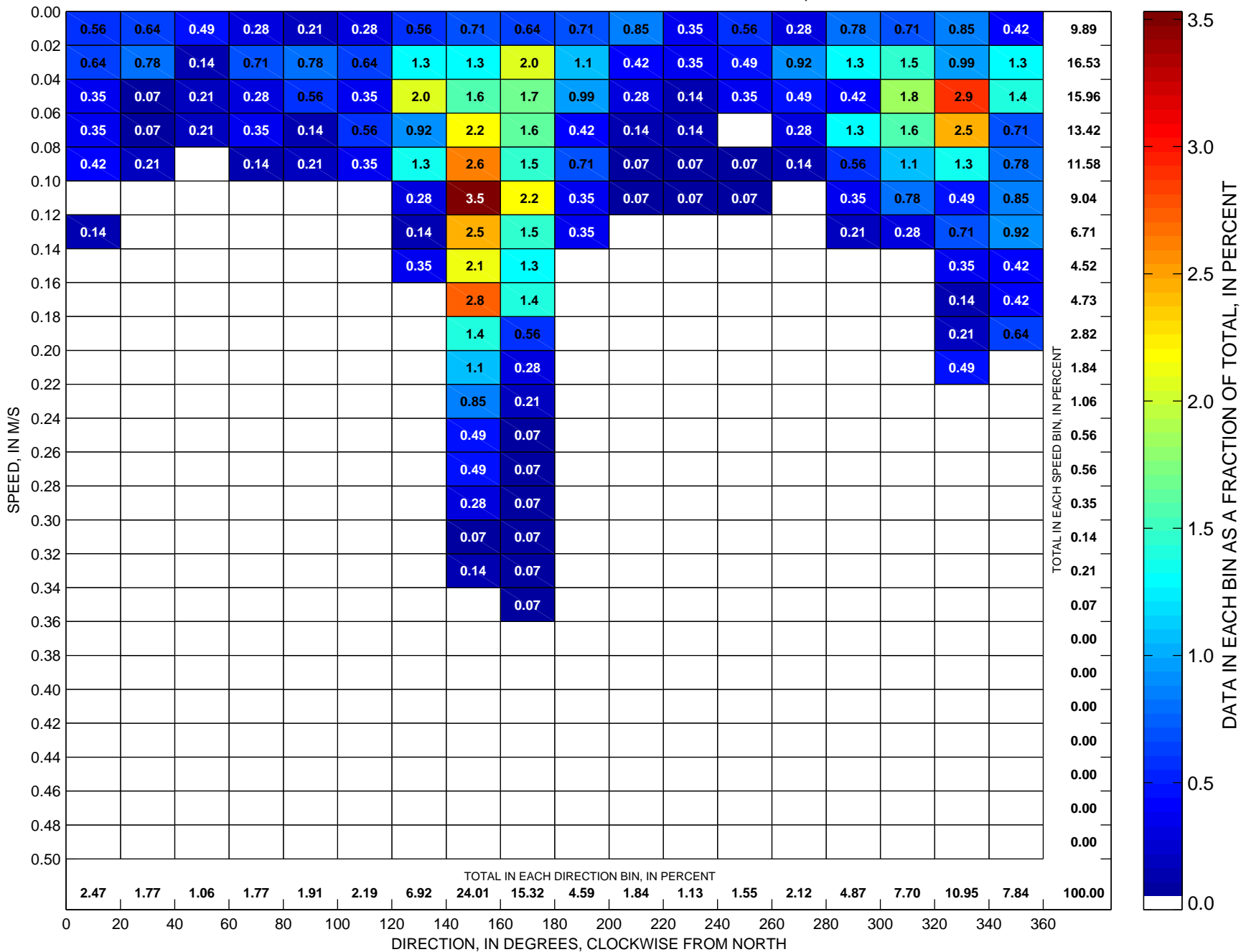


Currents at LT-B Sorted by Speed and Direction Low-Pass-Filtered ADCP Observations at ~5 m, 1997



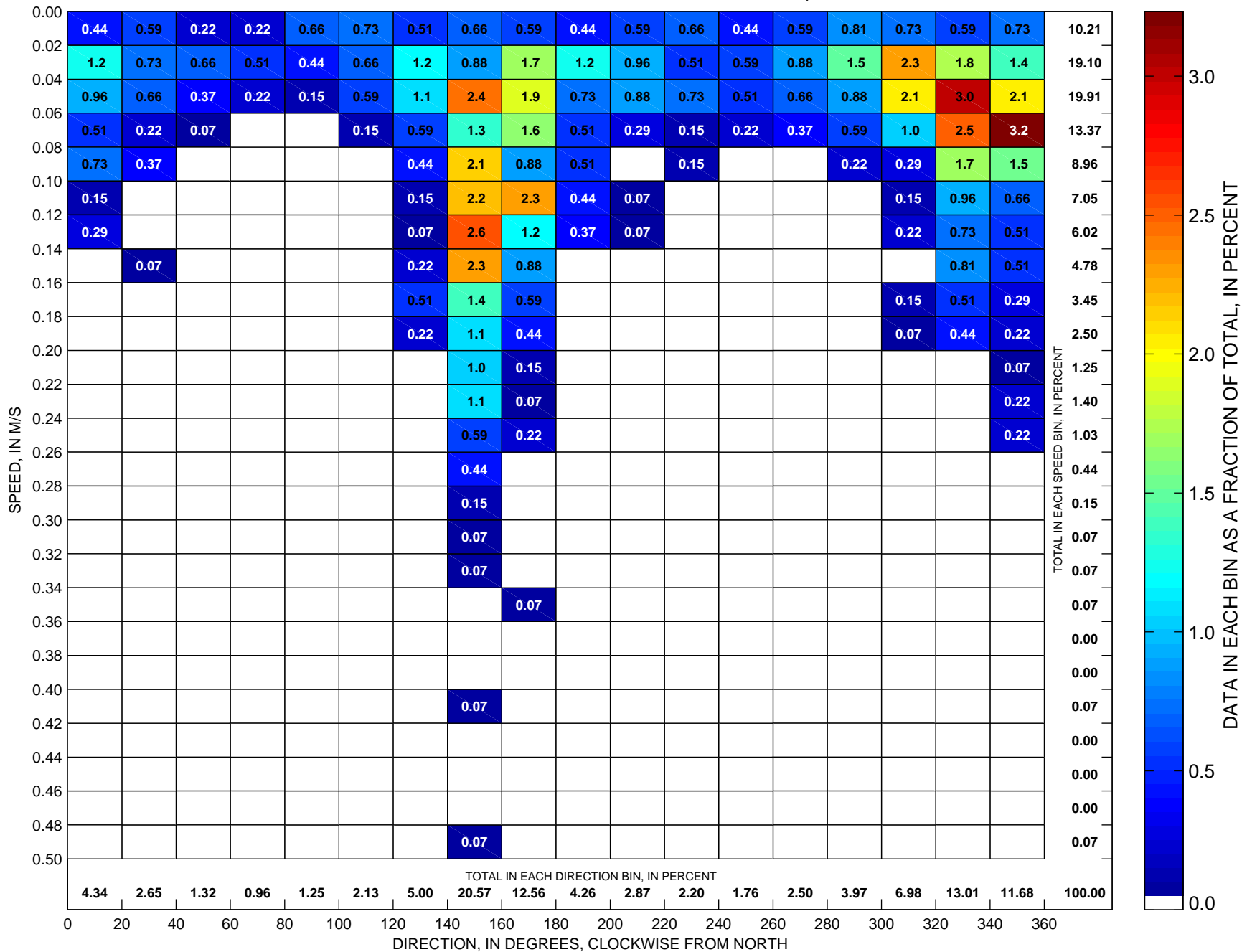
Total number of data points sorted is 250, which is 17 percent of possible observations made during the full year.

Currents at LT-B Sorted by Speed and Direction Low-Pass-Filtered ADCP Observations at ~5 m, 1998



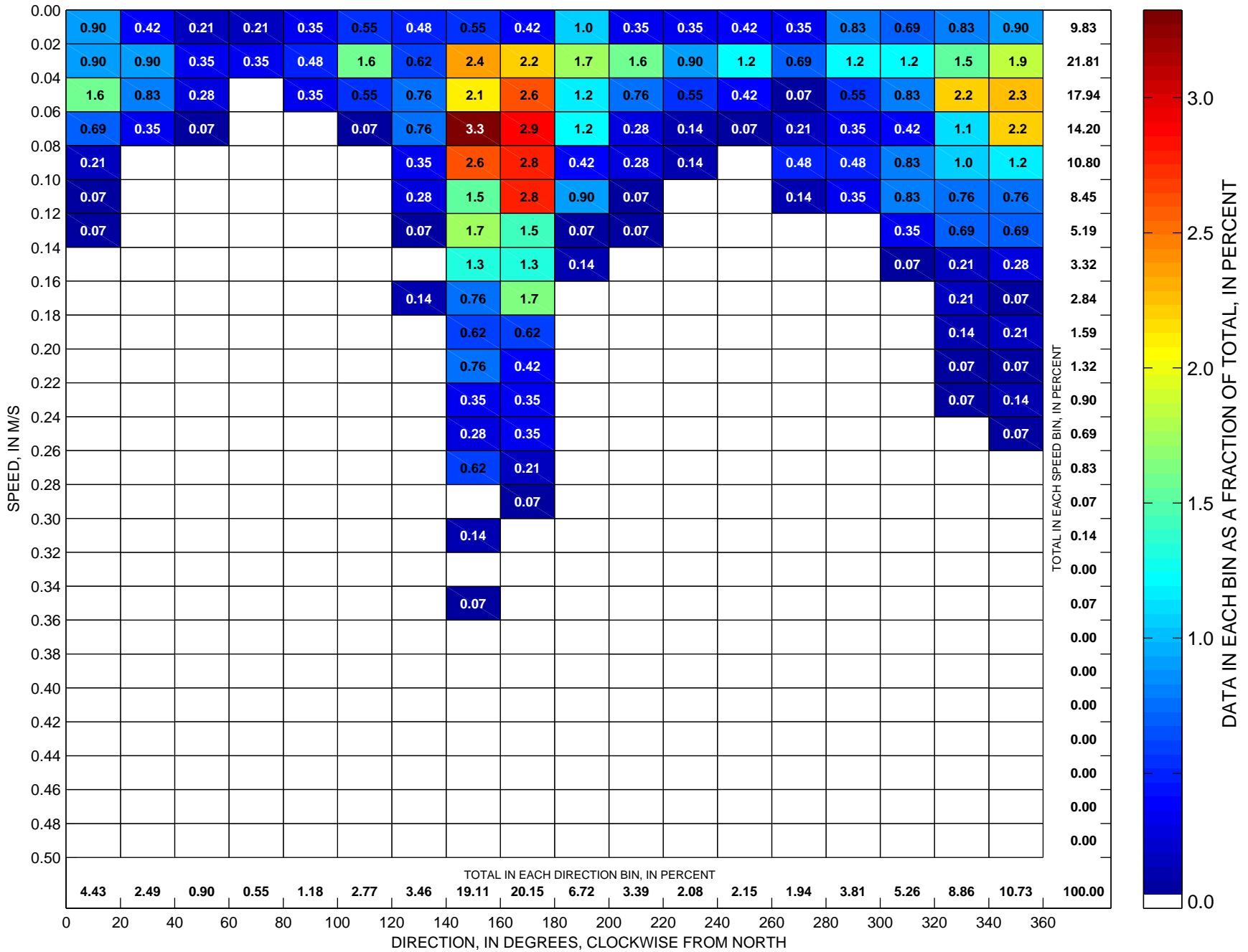
Total number of data points sorted is 1416, which is 97 percent of possible observations made during the full year.

Currents at LT-B Sorted by Speed and Direction Low-Pass-Filtered ADCP Observations at ~5 m, 1999



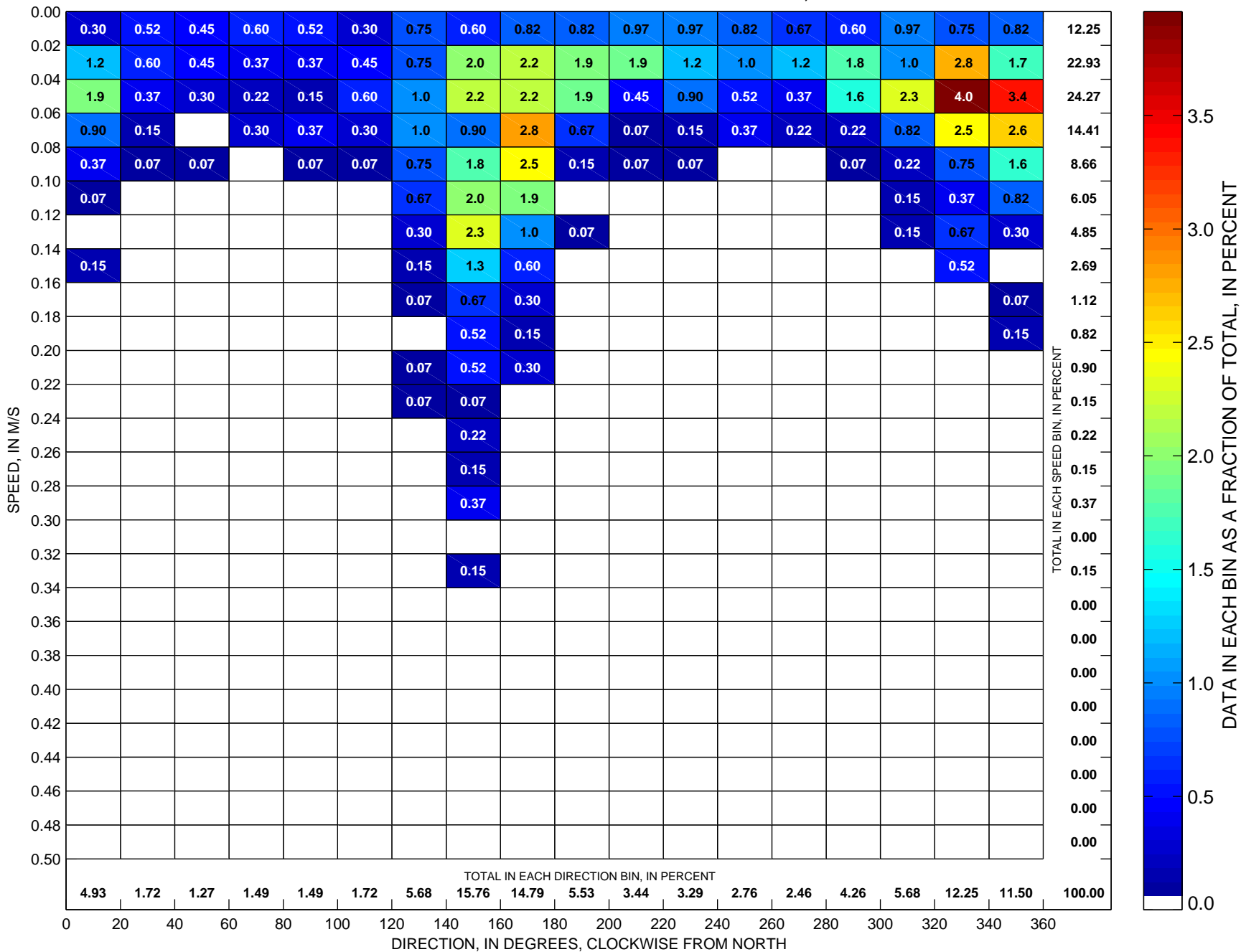
Total number of data points sorted is 1361, which is 93 percent of possible observations made during the full year.

Currents at LT-B Sorted by Speed and Direction Low-Pass-Filtered ADCP Observations at ~5 m, 2000



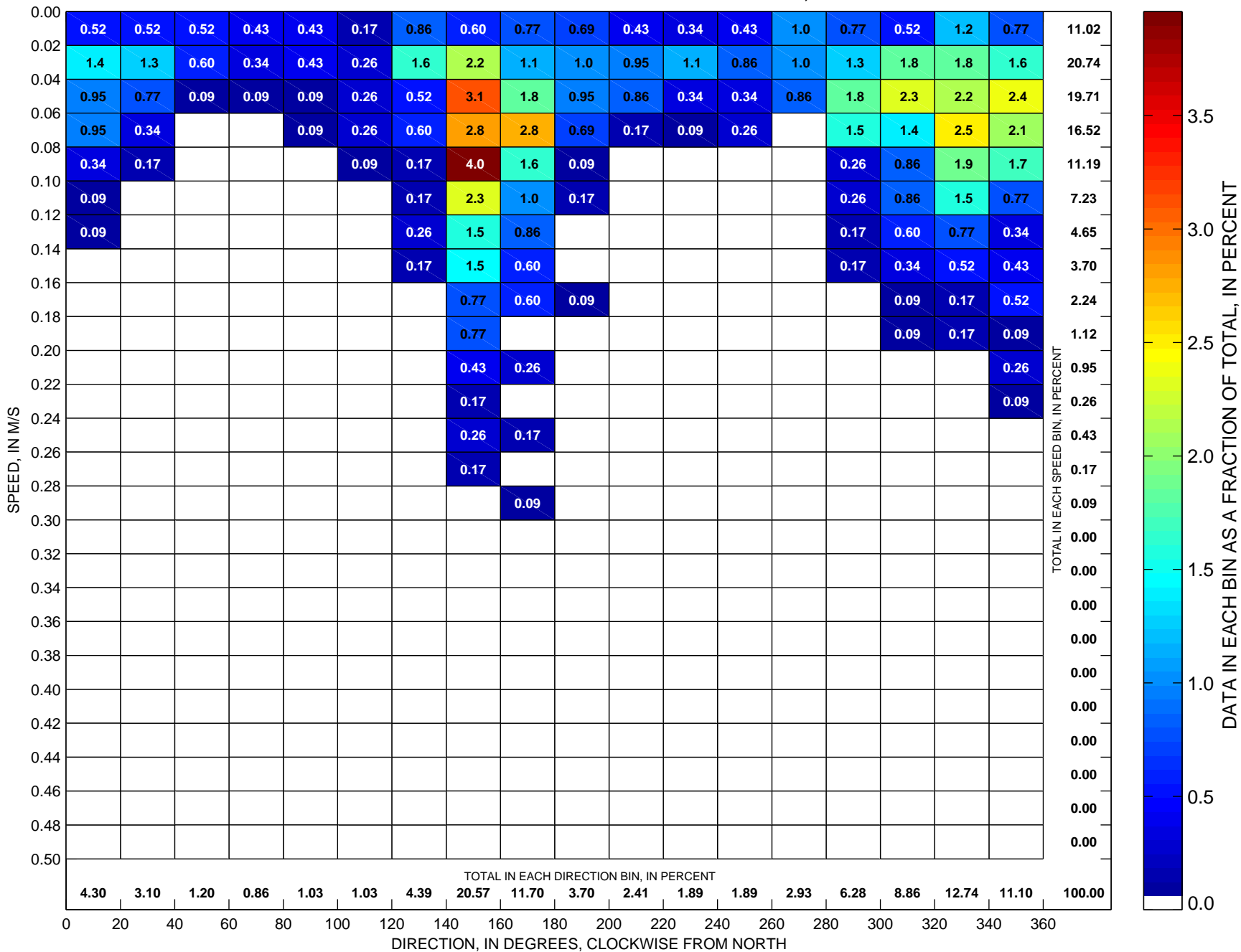
Total number of data points sorted is 1444, which is 99 percent of possible observations made during the full year.

Currents at LT-B Sorted by Speed and Direction Low-Pass-Filtered ADCP Observations at ~5 m, 2001



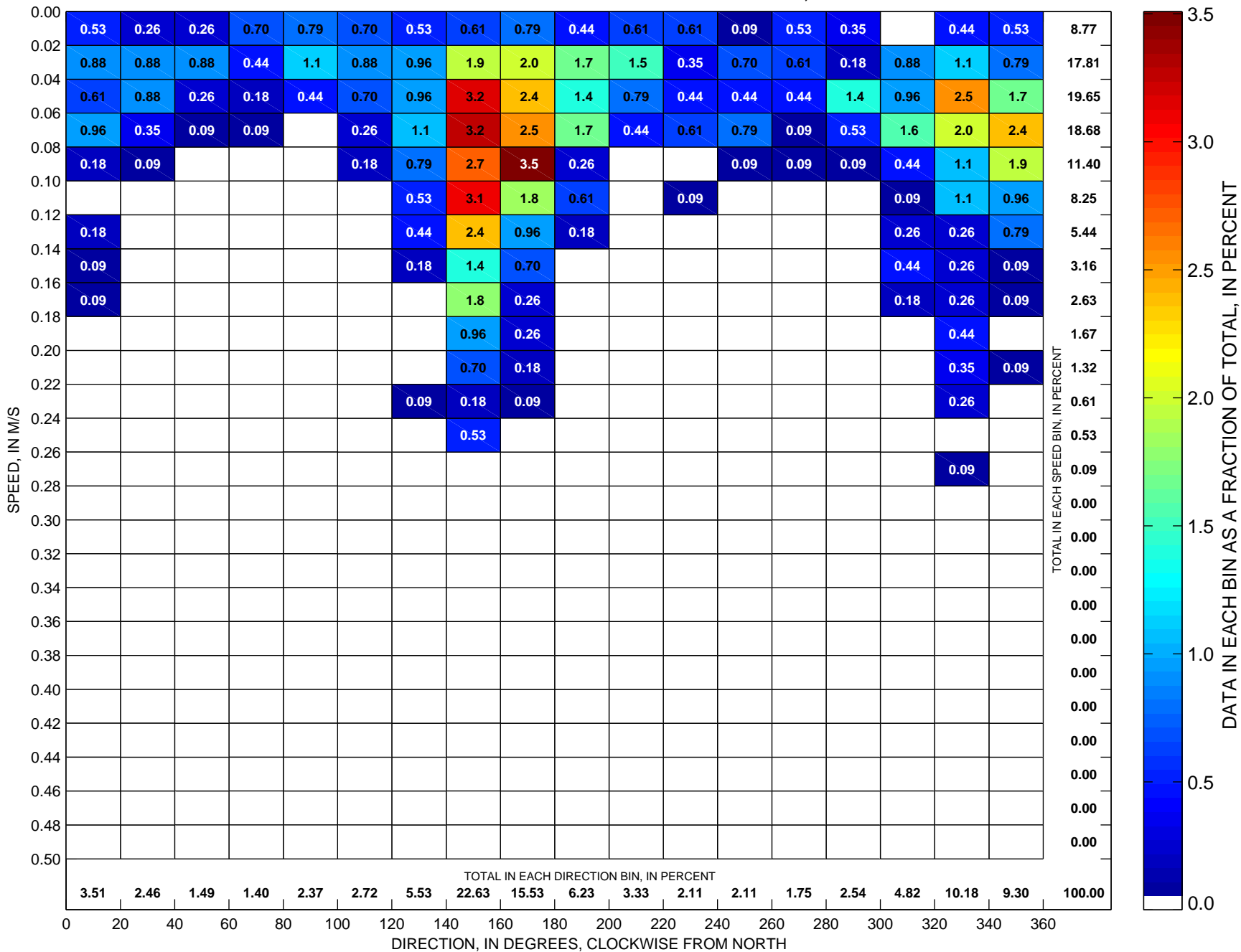
Total number of data points sorted is 1339, which is 92 percent of possible observations made during the full year.

Currents at LT-B Sorted by Speed and Direction Low-Pass-Filtered ADCP Observations at ~5 m, 2002



Total number of data points sorted is 1162, which is 80 percent of possible observations made during the full year.

Currents at LT-B Sorted by Speed and Direction Low-Pass-Filtered ADCP Observations at ~5 m, 2003



Total number of data points sorted is 1140, which is 78 percent of possible observations made during the full year.