

There are four project laboratories

1. *The Stable Isotope Laboratory* provides analyses of the isotopic compositions of the elements carbon, hydrogen, nitrogen, oxygen, and sulfur in a wide range of solid, liquid, and gaseous samples.
2. *The Noble Gas and Active Gas Laboratory* provides analyses of the concentrations and isotopic compositions of helium, neon, argon, krypton, and xenon and the concentrations of hydrogen, methane, carbon dioxide, nitrogen, and many other gas species in solid, liquid, and gaseous samples.
3. *The Single Fluid Inclusion Laboratory* provides analyses, by laser ablation, of the concentrations of metals and other cations in individual fluid and solid inclusions that were trapped in crystals during mineral formation in different geologic environments.
4. *The Fluid Inclusion Solute Chemistry Laboratory* provides analyses of the concentrations of 24 anions and cations in tiny amounts of water liberated from mineral fluid inclusions.

List of Representative Studies

In its five-year lifetime the Project has supported a large number of studies spanning a broad scientific spectrum. Table 1 lists representative studies grouped according to the six strategic science directions that were outlined by the USGS Science Strategy Team (“Facing tomorrow’s challenges: USGS science in the coming decade,” 2007). Virtually all the studies were collaborative efforts, and in many cases they were also interdisciplinary, involving scientists from other government agencies, academic research groups, or private industry. Collaborating institutions are indicated in table 1. A forthcoming circular, which contains summaries of these and other studies and a complete list of Evolution of Ore Deposits and Technology Transfer Project publications, will be published in the near future.

A Synopsis of Selected Project Results

The project was highly successful in its objective of applying innovative geochemical techniques and approaches to important science issues in each of the six strategic science directions. In studies related to mineral resources, important advances were made in understanding

ore formation, particularly with respect to sediment-hosted deposits and magmatic-hydrothermal deposits which represent our primary sources of lead, zinc, and copper, and important sources of several other metals and non-metal commodities. The results of these studies are currently being integrated with ore deposit models that together will form the basis of upcoming USGS assessments of the country’s mineral resources as well as the resources of other regions that are important for the global supplies of particular mineral commodities.

In studies of ecosystems, geochemical methods were invaluable in the determination of the diets and feeding behavior of animal populations that have been, or currently are, in decline. Study subjects included brown bears, grizzly bears, sea lions, and wolves in locations where the animals influence or are influenced by commercial or recreational fishing, and in national parks where wildlife constitute a biological resource. In multi-year studies or in studies where archived samples of animal tissues were available, geochemical tools yielded insights on the ways in which ecosystems have changed. The results of these studies indicated that spawning fish play an integral role in food webs located far from coastal areas.

Table 1. Representative studies supported by the Evolution of Ore Deposits and Technology Transfer Project, grouped according to the six strategic science directions that were enumerated by the U.S. Geological Survey (USGS) Science Strategy Team.

Strategic Science Direction	Title of Study	Collaborators
1. Ecosystems and Ecosystem Change	Grizzly Bears in the Greater Yellowstone Ecosystem	Interagency Grizzly Bear Study Team, National Park Service, Washington State University Bear Center
	Biogeochemical Perspective on Food Webs in a Prairie Wetland	USGS Biological Resources Discipline, South Dakota State University
	Nutritional Stress as a Possible Cause for Declines on the Western Steller Sea Lion	Alaska Department of Fish and Game, National Oceanic and Atmospheric Administration
	Nutritional Ecology of Denali Wolves	USGS Alaska Science Center, National Park Service
	Wetlands Ecosystems, Migratory Shorebirds, and Isotope Geochemistry	USGS Biological Resources Discipline
2. Environment and Human Health	Anthropogenic Sulfate in Natural Waters	Colorado Groundwater Resource Service Inc.
	Cyanide in Leach Wastes at Gold Mines	Pinson Mining Company, Barrick Gold Corporation, Newmont Mining Corporation, Shell Oil Company, Getchell Gold Corporation, Onstream Resource Managers, U.S. Environmental Protection Agency Region 6, USGS Columbia Environmental Research Center, RETEC Group Inc.
3. Water Census of the United States	Geochemical Reconnaissance of the Arbuckle-Simpson Aquifer, South-Central Oklahoma	Oklahoma Water Resources Board, National Park Service, USGS Water Science Center-Oklahoma City, USGS National Research Program
	Noble Gas Geochemistry of the Edwards Aquifer, South-Central Texas	Edwards Aquifer Authority, San Antonio Water System, USGS Water Science Center-San Antonio

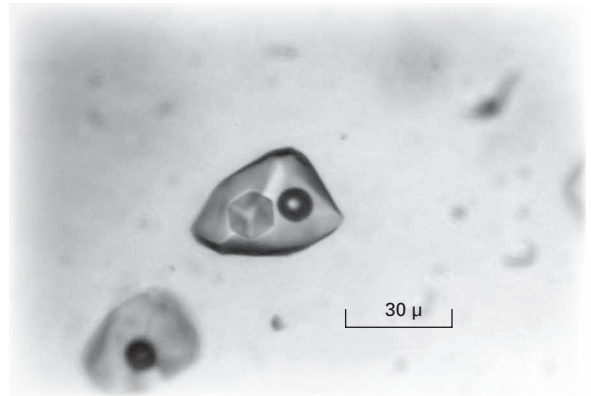
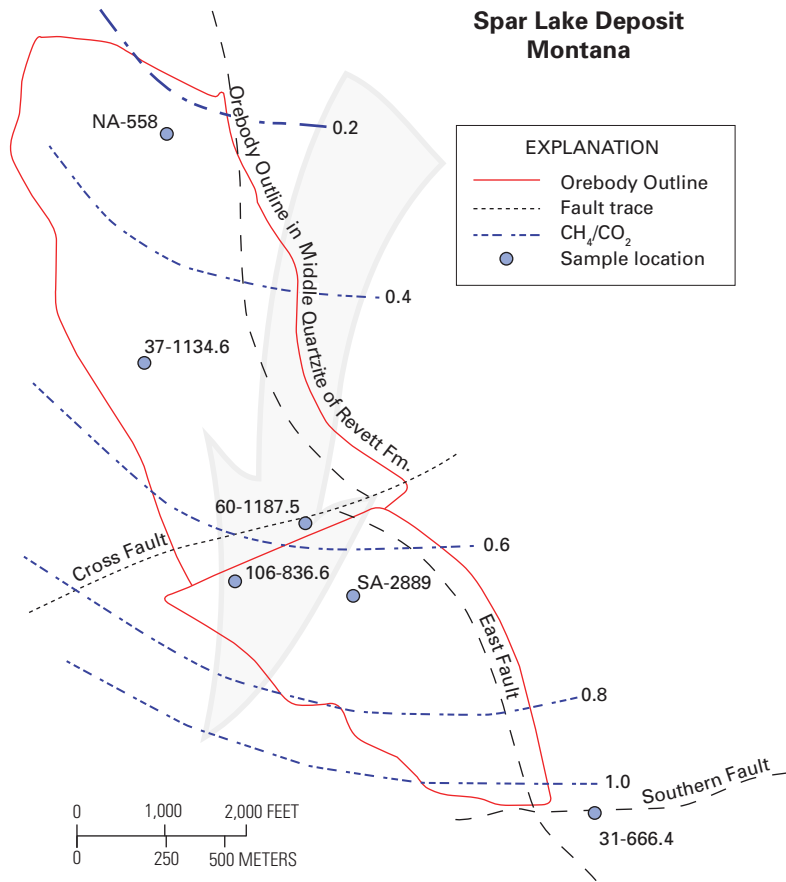
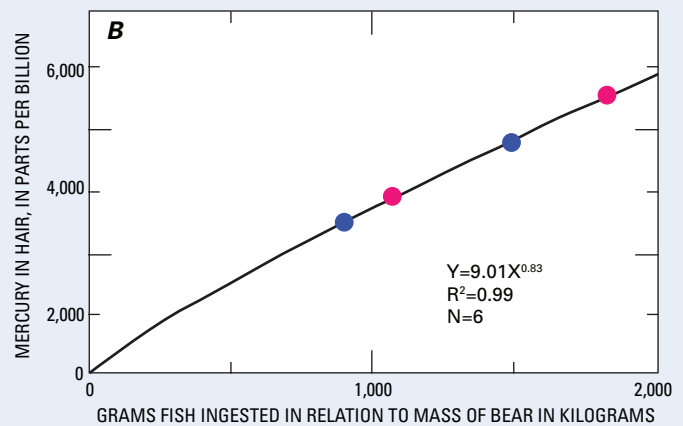
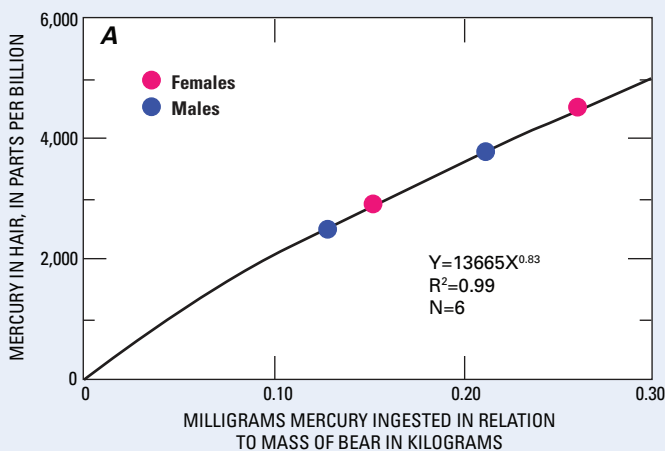
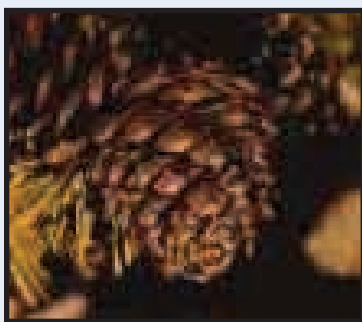


Figure 2. Microscopic inclusion in quartz from a sedimentary rock collected from the Spar Lake copper-silver deposit in Montana (top). The inclusion consists of a solid crystal and a vapor bubble surrounded by water-rich liquid. Chemical analysis of the vapor bubble in many samples of this type revealed the map-view spatial patterns that are shown in the bottom figure. The pattern is evidence that the ores formed where metalliferous brines flowing through an aquifer (flow direction is indicated by arrow) encountered a natural gas reservoir. Understanding the genesis of the Spar Lake deposit will help U.S. Geological Survey scientists advise land managers on the potential for economic accumulations of copper and silver elsewhere in western Montana and in other areas.

Table 1. Representative studies supported by the Evolution of Ore Deposits and Technology Transfer Project, grouped according to the six strategic science directions that were enumerated by the U.S. Geological Survey (USGS) Science Strategy Team—Continued.

Strategic Science Direction	Title of Study	Collaborators
4. National Hazards, Risk, and Resilience Assessment	Landslide Hazards at Mt. Rainier Related to Hydrothermal Alteration	USGS Volcano Hazards Program, National Park Service
	Fault Slip Rates of the West Salton Detachment System: Input for Earthquake Hazard Assessment	USGS National Mapping Program
5. Climate Variability and Change	Lake Studies in Support of Global Change Program	USGS Tropical and Arid Regions Climate Project, Lawrence Livermore National Laboratory, University of Nevada, University of Southern California
	Colorado Alpine Glaciation and Climate History	USGS Water Resources Discipline, USGS Earth Surface Dynamics Program, New Mexico Bureau of Mines and Geology, Paul Scherrer Institute of Particle Physics-Switzerland, Dalhousie University
	Brown Bears in the Kuskokwim Mountains, Southwest Alaska	U.S. Fish and Wildlife Service
6. Energy and Minerals for America's Future	Spar Lake Copper-Silver Deposit, Montana: Ore-Forming Processes Revealed in Fluid Inclusion Analyses	
	Natural Destruction of an Alunite Deposit at Big Rock Candy Mountain, Marysvale, Utah	
	Banded Alunite as an Indicator of Ore Forming Magmatic Hydrothermal Processes	
	Giant Deposits of Zinc and Lead in the Western Brooks Range of Alaska	Teck Cominco Limited, USGS Energy Program, Bureau of Land Management

Figure 3. Grizzly bear eating cow parsnip in Yellowstone National Park (right). Other food sources for bears in the Greater Yellowstone Ecosystem include nut-bearing cones from white bark pine trees (lower left) and cutthroat trout (lower right). Data from controlled feeding experiments at the Washington State University Bear Center show that the mercury content of bear hair reflects the amount of mercury ingested in fish (lower right). Photographs courtesy of Karyn Rode (right), Charles Schwartz (lower left), and U.S. Forest Service (lower right). Graphs (bottom) from Felicetti and others (2004).



In studies related to environment and human health, isotope and chemical methods were applied to specific chemical species in natural waters that can be harmful to the health of aquatic life and humans. The investigations used stable-isotope compositions to fingerprint the source of harmful chemicals and to identify the processes that supplied them to the natural environment. The sources and fate of solutes can be important for reasons beyond effects on drinking water. For example, elevated concentrations of the sulfate anion can signal acidification of the waters by natural or anthropogenic processes, or can signal salinization of

associated soils which can lead to stunted vegetation or low crop yields.

In studies supporting a water census of the United States, multiple geochemical tools were used to determine the origin and distribution of groundwater underlying broad areas of Oklahoma and Texas. This work informed decision makers on matters of current and future water quality and water availability. Key findings were obtained from noble-gas-isotope measurements which provided estimates of aquifer replenishment rates and estimates of the rates at which water can be safely withdrawn without depleting the resources.

Contributions to hazard assessment included collaborative studies of landslide potential at active and dormant volcanoes in the Cascade Range and studies of the slip rate along part of the San Andreas fault system in southern California. At Mount Rainier in the Cascade Range evidence of hydrothermal alteration—which can render volcanic edifices landslide-prone—was identified in volcanic products dating back as far as 10,000 years. Important variables in assigning landslide risk were found to be the degree of brecciation of a given volcanic rock unit and its proximity to the volcanic conduit. In a field area on the



west side of the Salton Trough in southern California, analysis of the cosmic radiation-produced isotopes helium-3 and neon-21 revealed the time interval that was required to displace erosional boulders 24 kilometers in a southerly direction along a strike-slip fault. The average slip rate of the fault, 20 millimeters per year, is a critical parameter in the estimation of accumulated stress and the prediction of the likelihood and probable magnitude of future earthquakes in the region.

Climate variability was documented in different studies that addressed climate change over decadal to millennial time scales. In the Kuskokwim Mountains of Alaska, brown bears were found to rely significantly on spawning salmon for food. A transient decline in salmon returns in the past decade was mirrored by a decline in the growth rate of the bear population suggesting that the viability of the mammals may be indirectly tied to ocean conditions in the North Pacific (for example, the Pacific Decadal Oscillation), which are known from other studies to influence salmon returns. A longer record of climate variability was obtained from a sediment core taken in Pyramid Lake, Nevada, a closed water body that loses water only by evaporation. High resolution oxygen isotope analysis of the core, which contains a continuous record of climate change for the past 8,000 years, suggests that future climate in the western U.S. has the potential for longer lasting and more intense droughts than are reflected in shorter-term instrumental records of climate change.

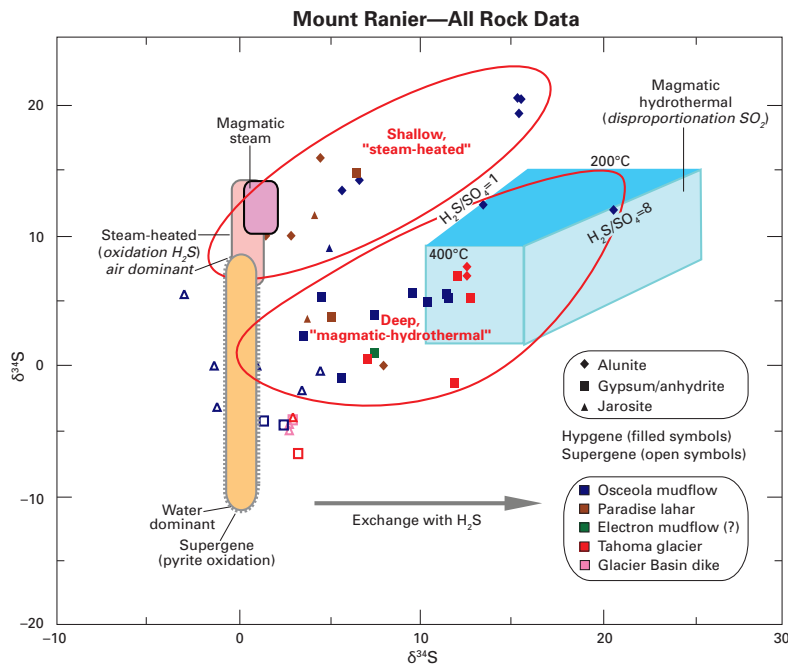


Figure 4. Mount Rainier volcano (top left), which is located about 100 kilometers southeast of downtown Seattle. Farms and residential development cover the Osceola mudflow which formed in a catastrophic eruption 5,600 years ago and buried an area of about 500 square kilometers. (Left) The isotopic compositions of sulfur ($\delta^{34}\text{S}$) and oxygen ($\delta^{18}\text{O}$) in minerals that were formed by hydrothermal alteration of the flanks of the volcano. The data reveal conditions of formation of the minerals and the source of the hot waters that formed them, information that is used in evaluating the collapse potential of volcanic edifices in the United States and its territories. Photograph courtesy of USGS Cascades Volcano Observatory.

