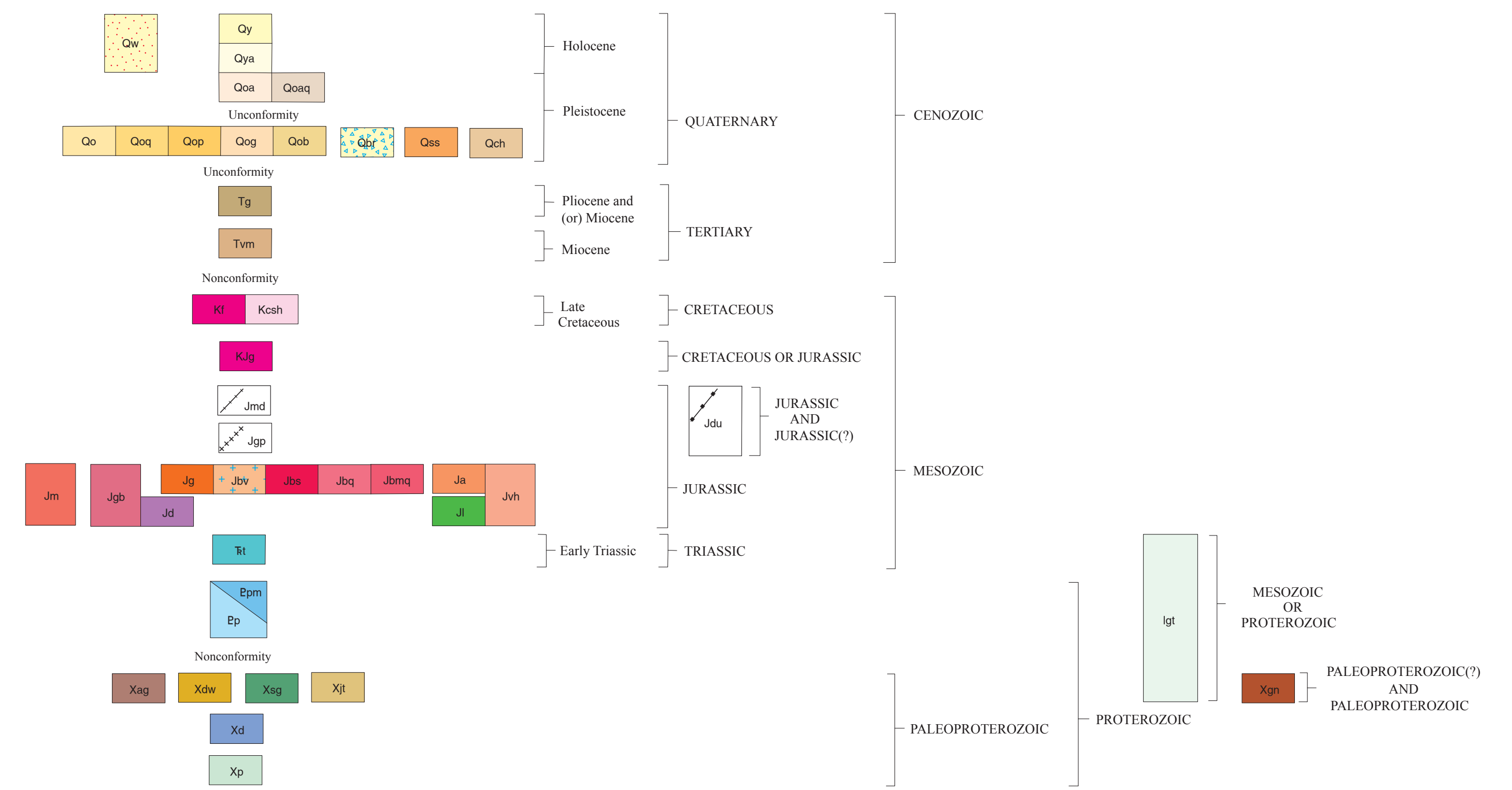
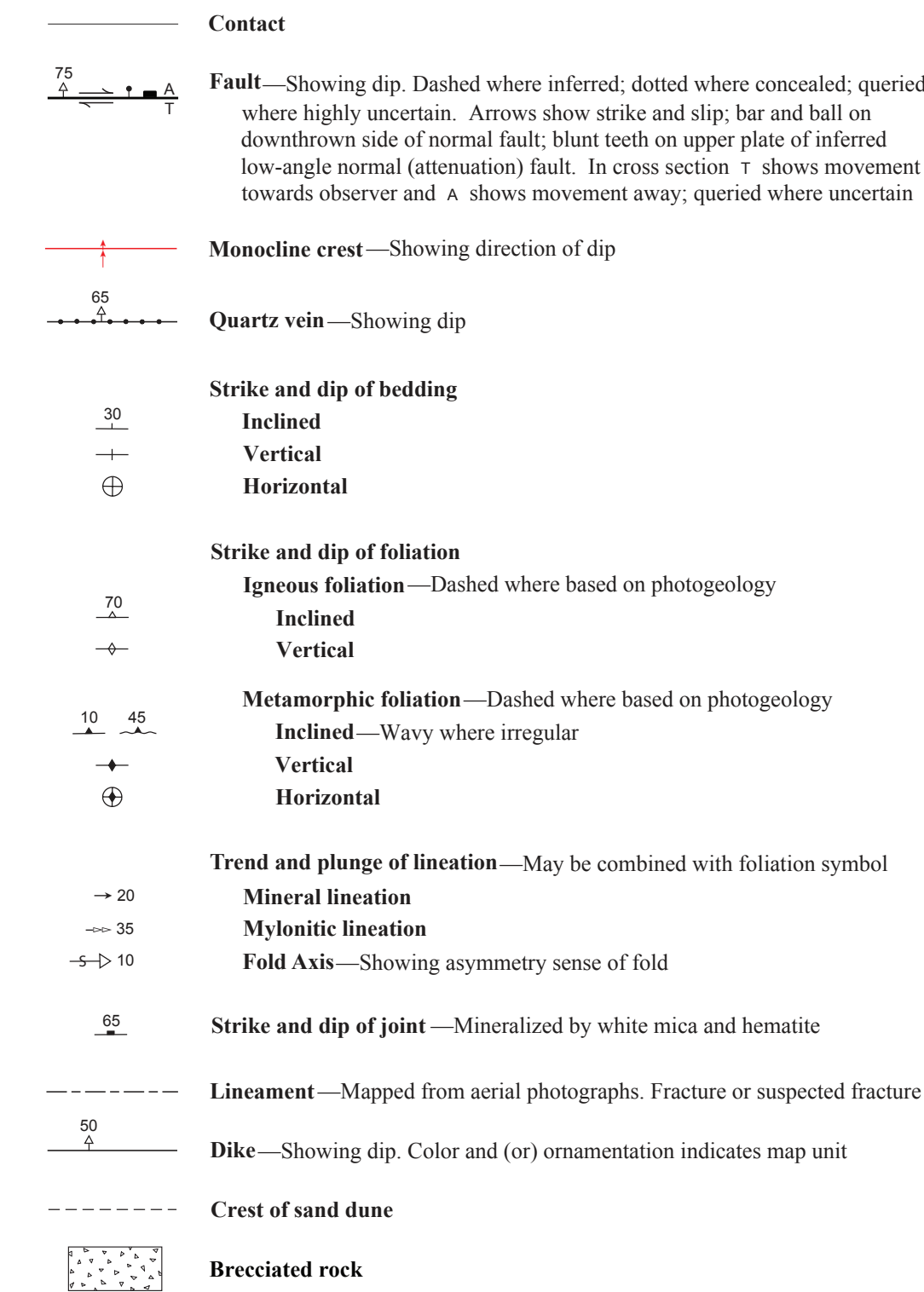


CORRELATION OF MAP UNITS

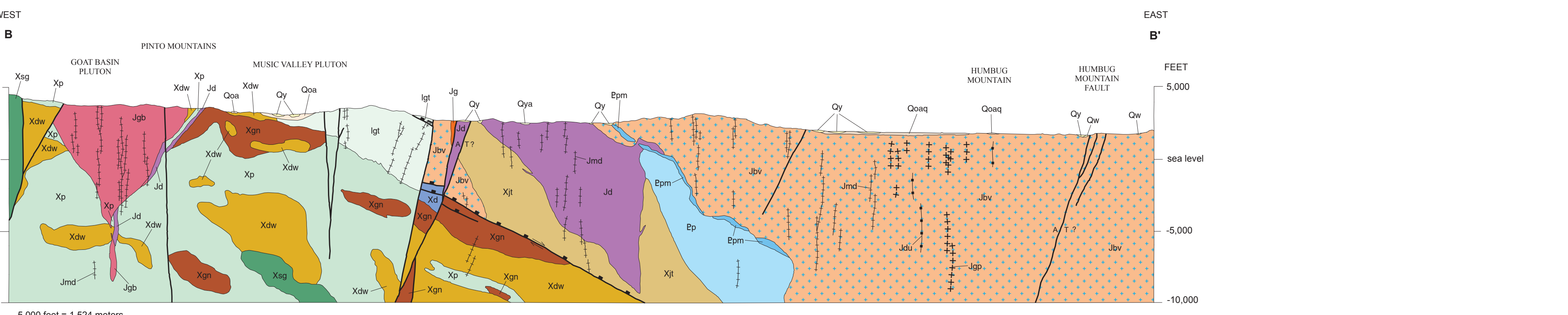
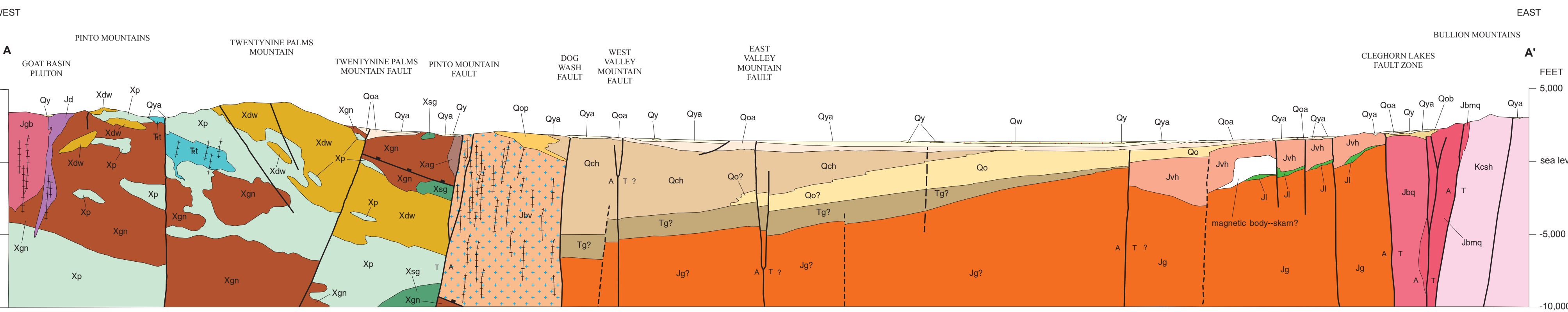
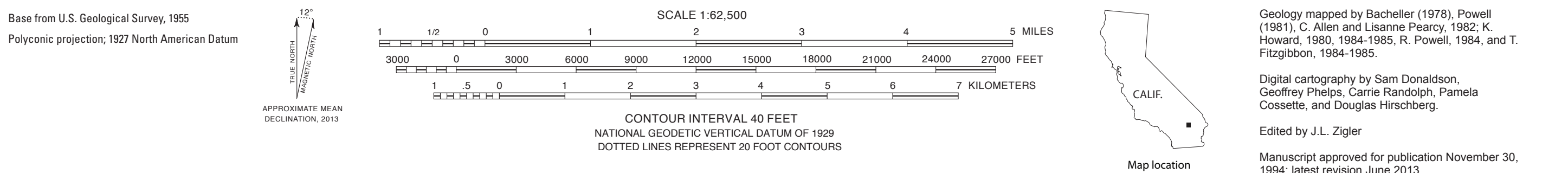


EXPLANATION OF MAP SYMBOLS



LIST OF MAP UNITS

- Surficial deposits (Holocene and Pleistocene)
- Qw Windblown sand (Holocene)
- Qy Youngest alluvium (Holocene)
- Qya Younger alluvium (Holocene)
- Qoa Older alluvium (Pleistocene)
- Qoaq Quartzite-clast alluvium
- Qo Oldest alluvium (Pleistocene)
- Qoq Quartzite-clast facies
- Qop Porphyritic-clast facies
- Qog Gneiss-clast facies
- Qob Facies in the Bullion Mountains
- Qb Sedimentary breccia (Pleistocene)
- Qos Sandstone (Pleistocene)
- Qch Sedimentary deposits of Campbell Hill (Pleistocene)
- Tg Gravel (Pliocene and (or) Miocene)
- Tvm Basalt of Valley Mountain (Miocene)
- Kt Feltsite dikes (Late Cretaceous)
- Ksh Coxsomb Intrusive Suite
- Ksg Sheep Hole Pass Granite (Late Cretaceous)
- Jmd Quartz-phryic granite (Cretaceous or Jurassic)
- Jgp Mafic dikes (Jurassic)
- Jm Dikes, undivided (Jurassic and Jurassic?)
- Jgb Granite porphyry dikes (Jurassic)
- Jd Grandiorite of Music Valley (Jurassic)
- Jg Granitoid rocks of Goat Basin Mine (Jurassic)
- Jb Granite (Jurassic)
- Jbv Bullion Mountains Intrusive Suite
- Jbs Virginia Dale Quartz Monzonite (Jurassic)
- Jbc Syenogranite (Jurassic)
- Jbnq Quartz monzonite (Jurassic)
- Jbmq Metamorphosed quartz monzonite and syenogranite (Jurassic, protolithic age)
- Ja Altered quartz monzonite (Jurassic)
- Jvh Volcanic and hypabyssal rocks (Jurassic)
- Jd Diorite (Jurassic)
- Jl Limestone (Jurassic)
- Jt Quartz monzonite of Twentynine Palms (Early Triassic)
- lgt Leucogranite gneiss south of Twentynine Palms Mountain (Mesozoic or Proterozoic)
- Ep Quartzite of Pinto Mountain (Proterozoic)
- Epm Marble
- Xgn Gneiss (Paleoproterozoic? and Paleoproterozoic)
- Xsp Augen gneiss (Paleoproterozoic?)
- Xdw Dog Wash Gneiss (Paleoproterozoic)
- Xsp Spotted gneiss (Paleoproterozoic)
- Xl Granite of Joshua Tree (Paleoproterozoic)
- Xd Diorite and amphibolite (Paleoproterozoic)
- Xp Pinto Gneiss of Miller (1938) (part) (Paleoproterozoic)



Geologic Map of the Valley Mountain 15' Quadrangle, California

By
Keith A. Howard, John Bachtler III, T.T. Fitzgibbon, R.E. Powell, and C.M. Allen
2013

Any use of trade, product, or firm names in this publication is for descriptive purposes only and does not imply endorsement by the U.S. Government. This map was printed on an electronic platelet directly from digital files. Dimensional calibration may vary between electronic platelets and between X and Y directions on the same platelet, and paper may change size due to atmospheric conditions; therefore, scale and proportions may not be true on plots of this map. For sale by U.S. Geological Survey, Information Services, Box 25286, Federal Center, Denver, CO 80225, 1-888-ASK-USGS. Digital files available at <http://pubs.usgs.gov/gq/1767/>. Suggested Citation: Howard, K.A., Bachtler, John, III, Fitzgibbon, T.T., Powell, R.E., and Allen, C.M., 2013. Geologic map of the Valley Mountain 15' quadrangle, San Bernardino and Riverside Counties, California: U.S. Geological Survey Energy Quadrangle Map GQ-1767, scale 1:62,500. (Available at <http://pubs.usgs.gov/gq/1767/>)