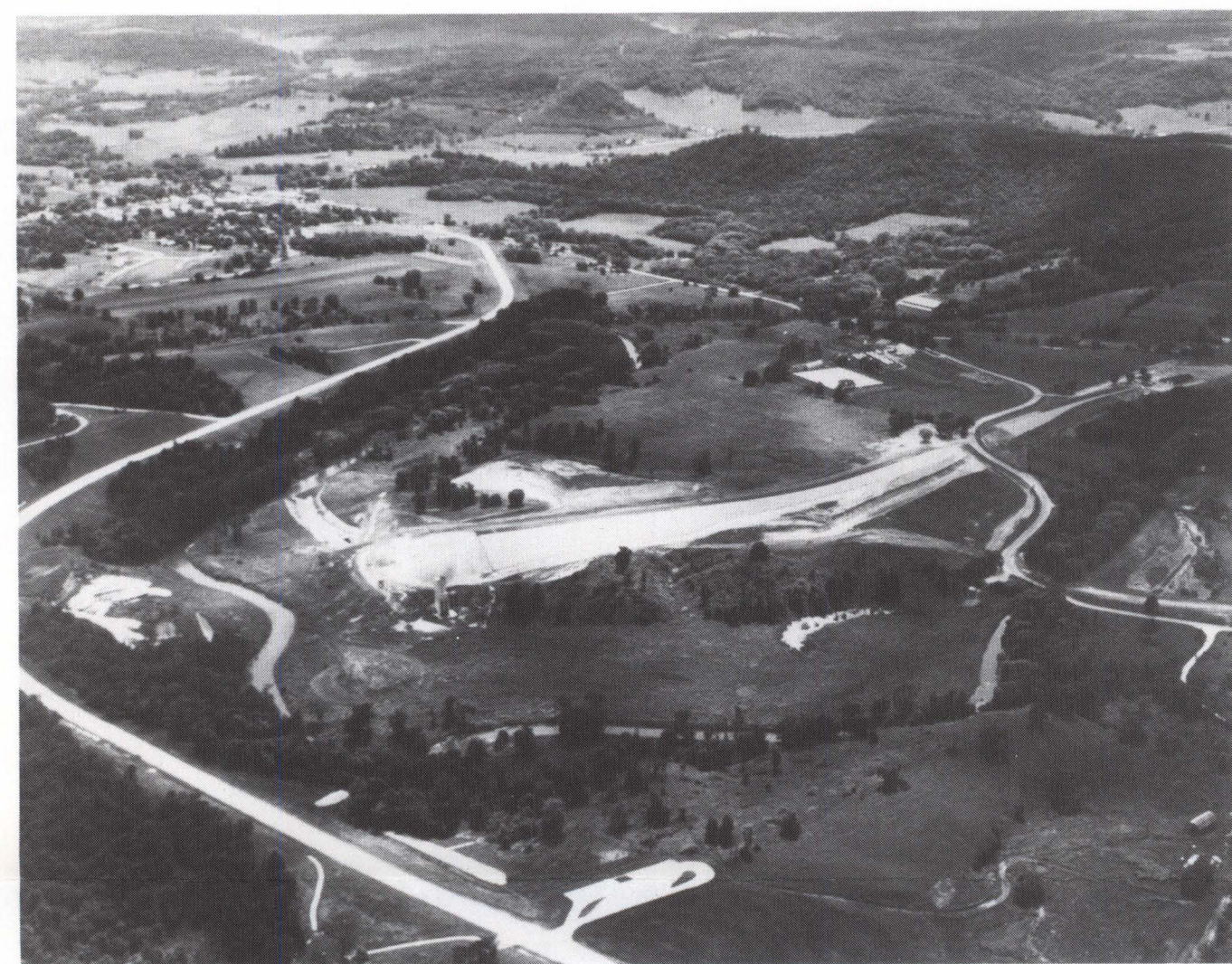
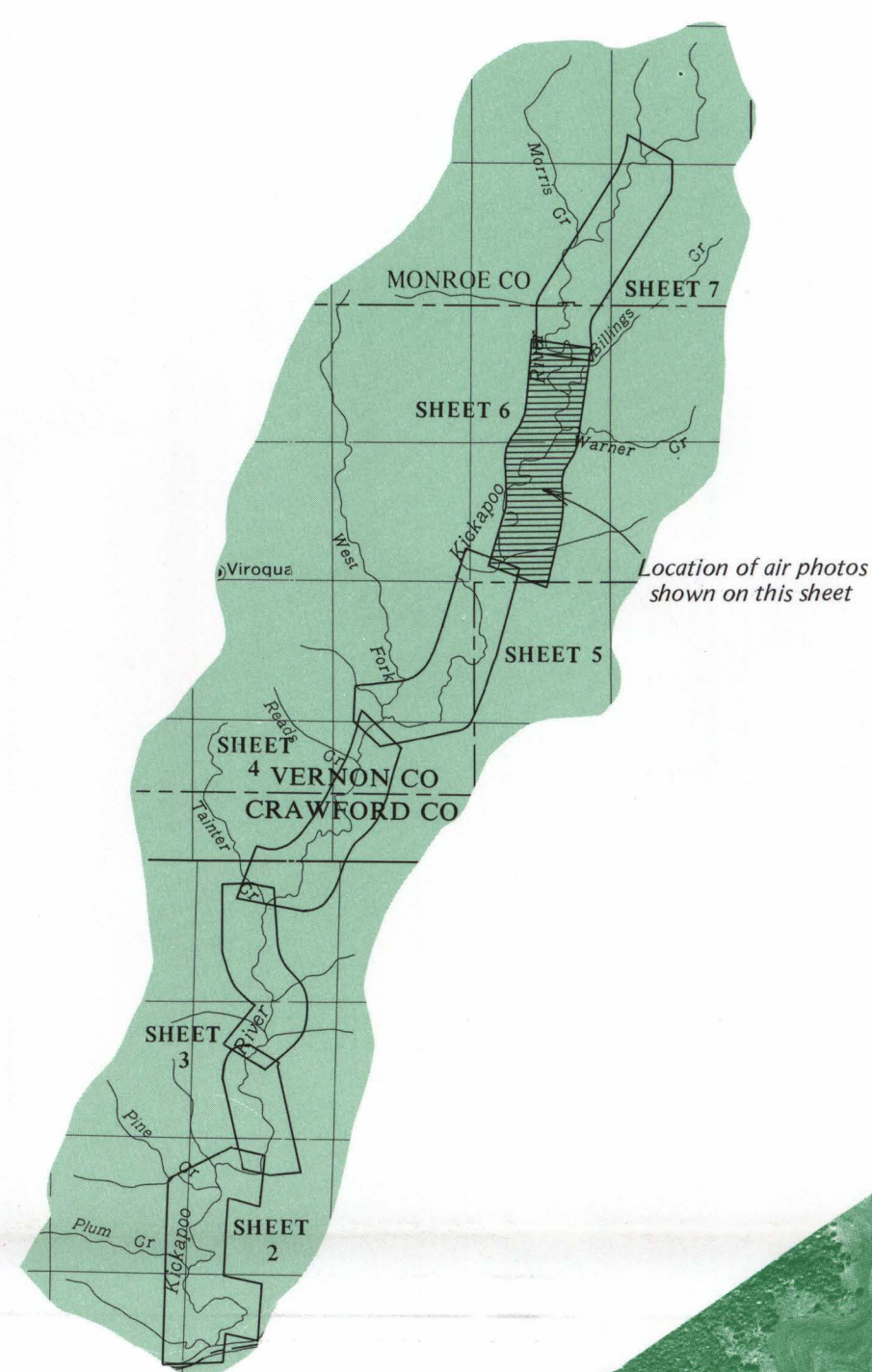




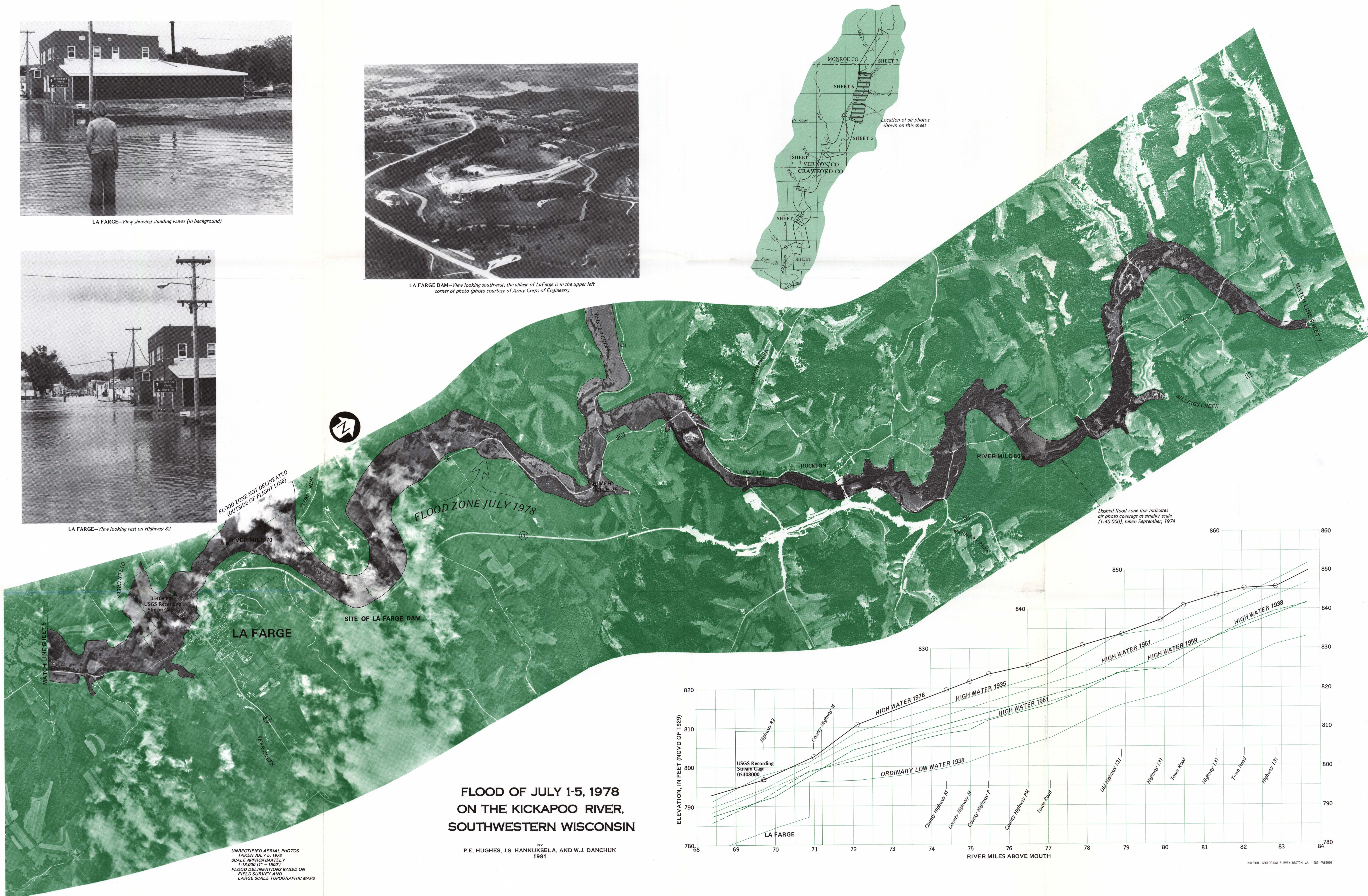
LA FARGE—View showing standing waves (in background)



LA FARGE DAM—View looking southwest; the village of La Farge is in the upper left corner of photo (photo courtesy of Army Corps of Engineers)



LA FARGE—View looking east on Highway 82



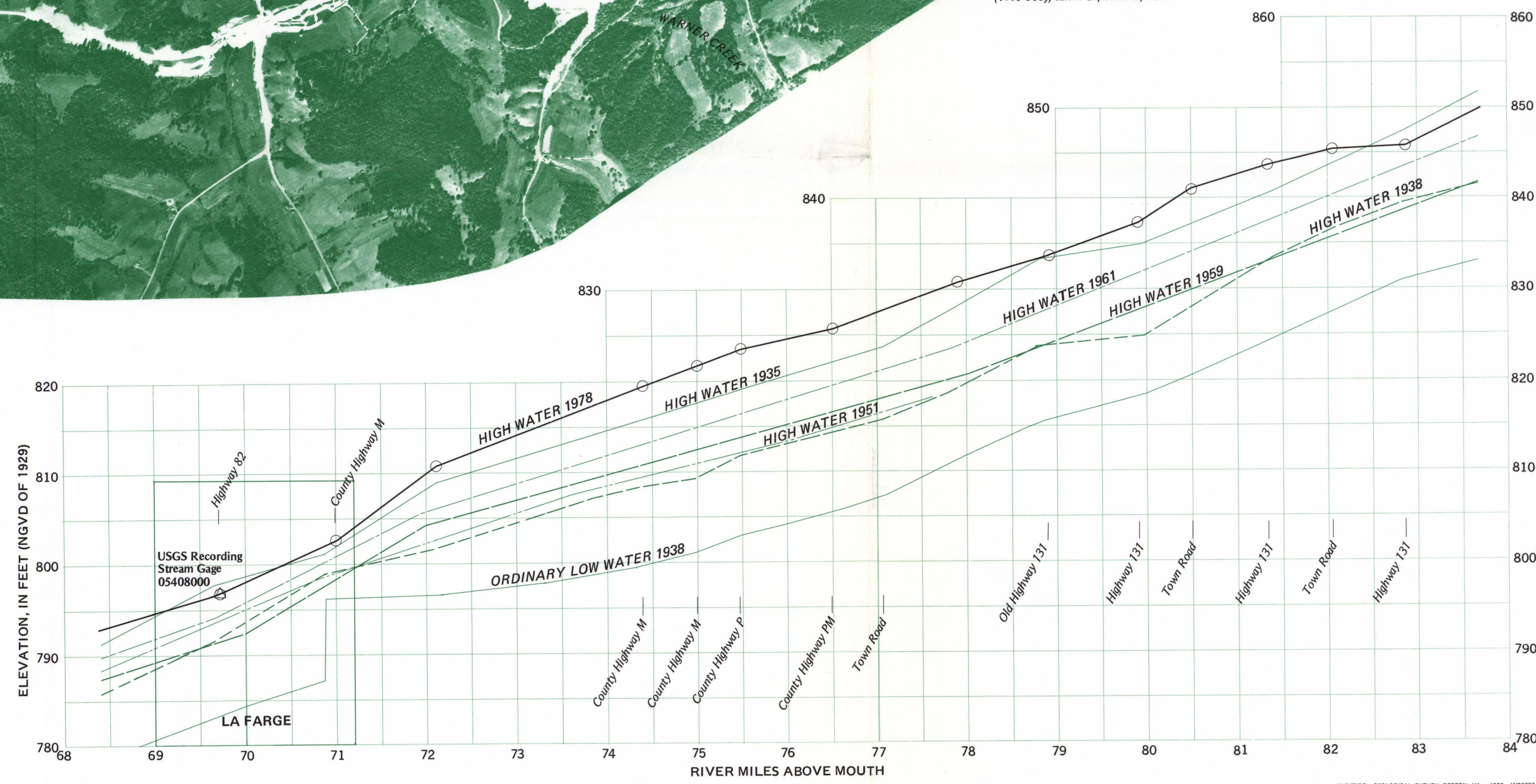
FLOOD ZONE NOT DELINEATED
(OUTSIDE OF FLIGHT LINE)

FLOOD ZONE JULY 1978

Dashed flood zone line indicates
all photo coverage at smaller scale
(1:40,000), taken September, 1974

**FLOOD OF JULY 1-5, 1978
ON THE KICKAPOO RIVER,
SOUTHWESTERN WISCONSIN**

BY
P.E. HUGHES, J.S. HANNUKSELA, AND W.J. DANCHUK
1981



UNRECTIFIED AERIAL PHOTOS
TAKEN JULY 5, 1978
SCALE APPROXIMATELY
1:16,000 (1" = 1500')
FLOOD DELINEATIONS BASED ON
FIELD SURVEY AND
LARGE SCALE TOPOGRAPHIC MAPS