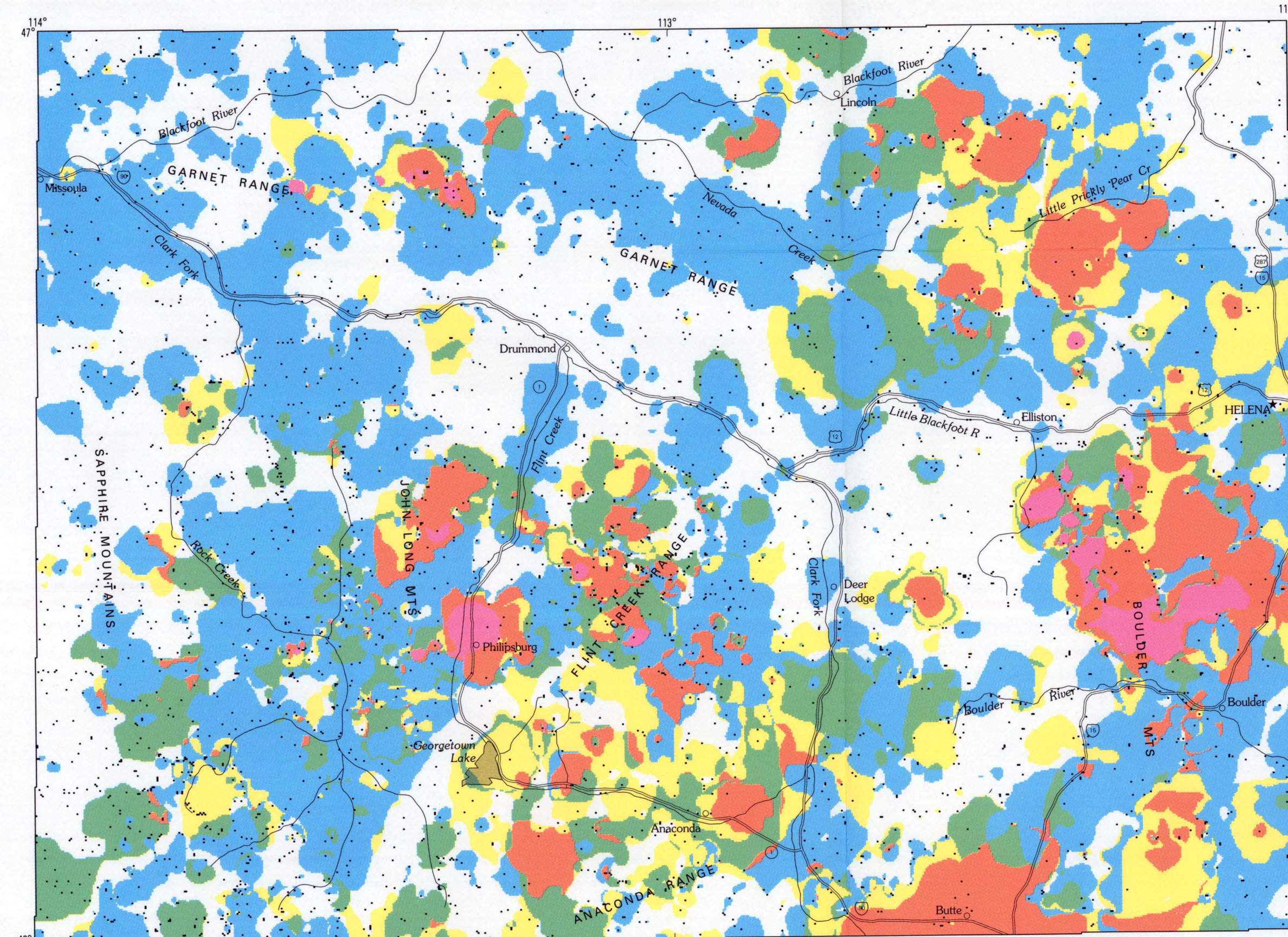
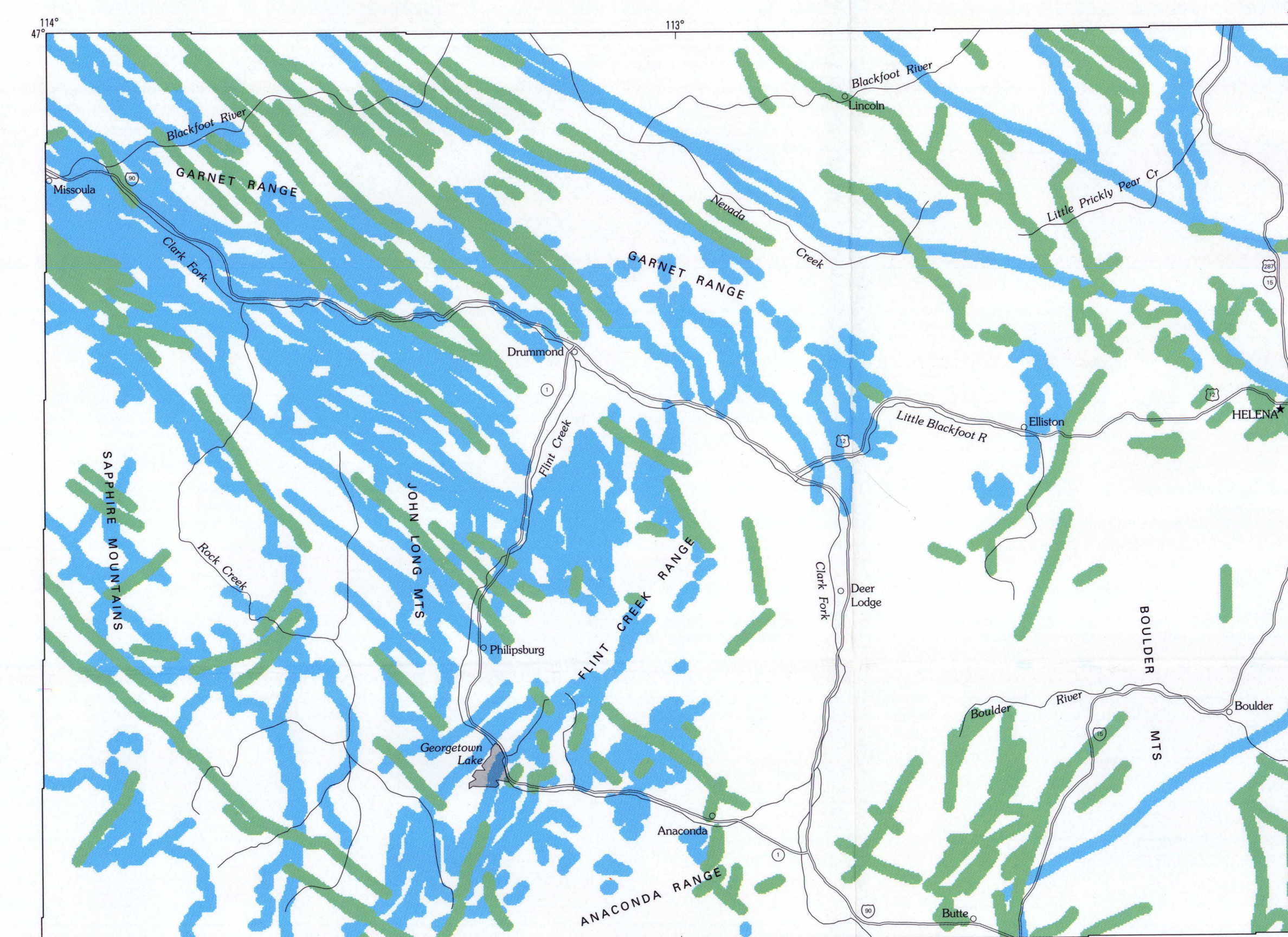


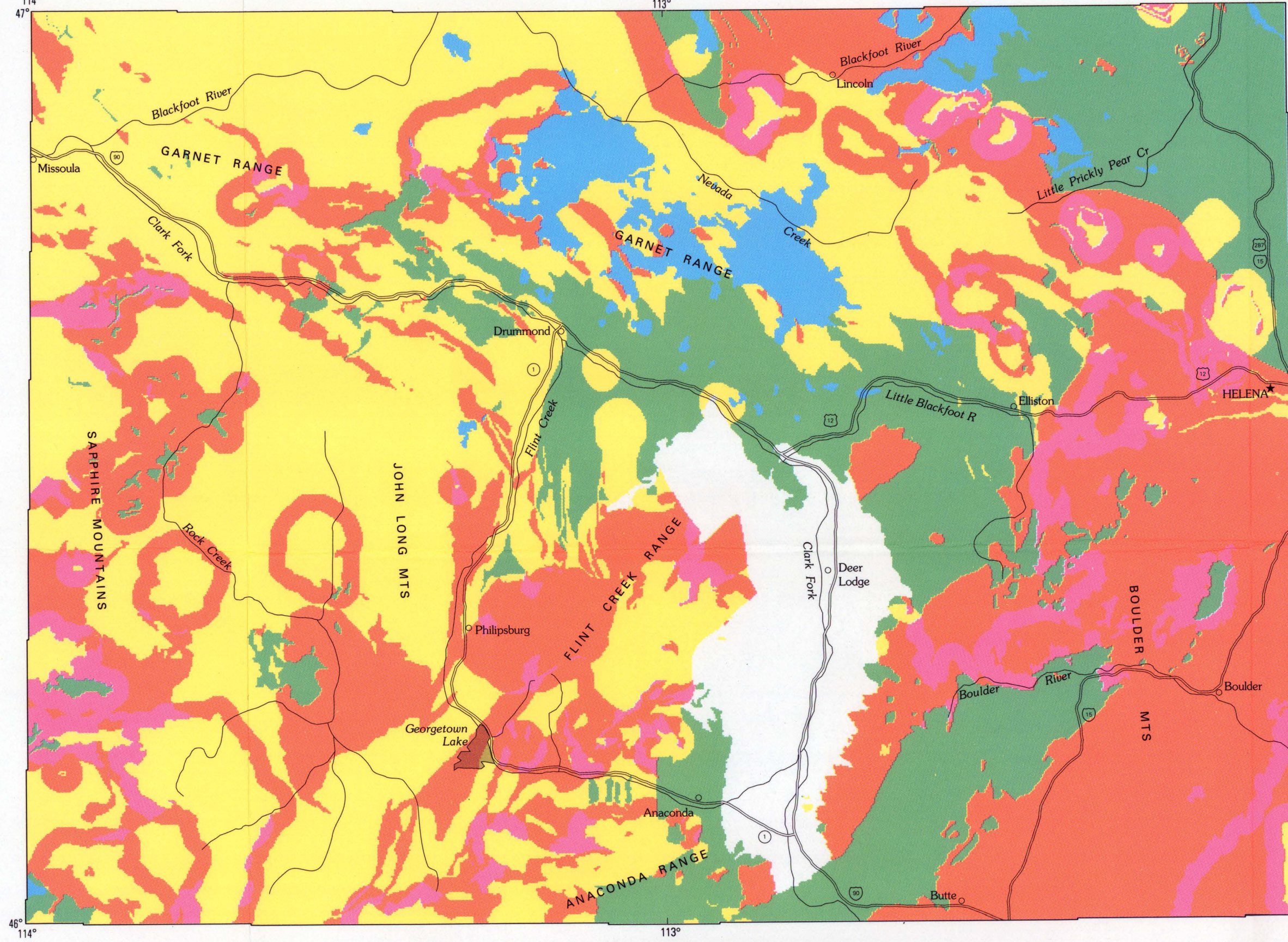
Map C. Map showing mining districts, geographic areas, and vein- and replacement-type mines and prospects



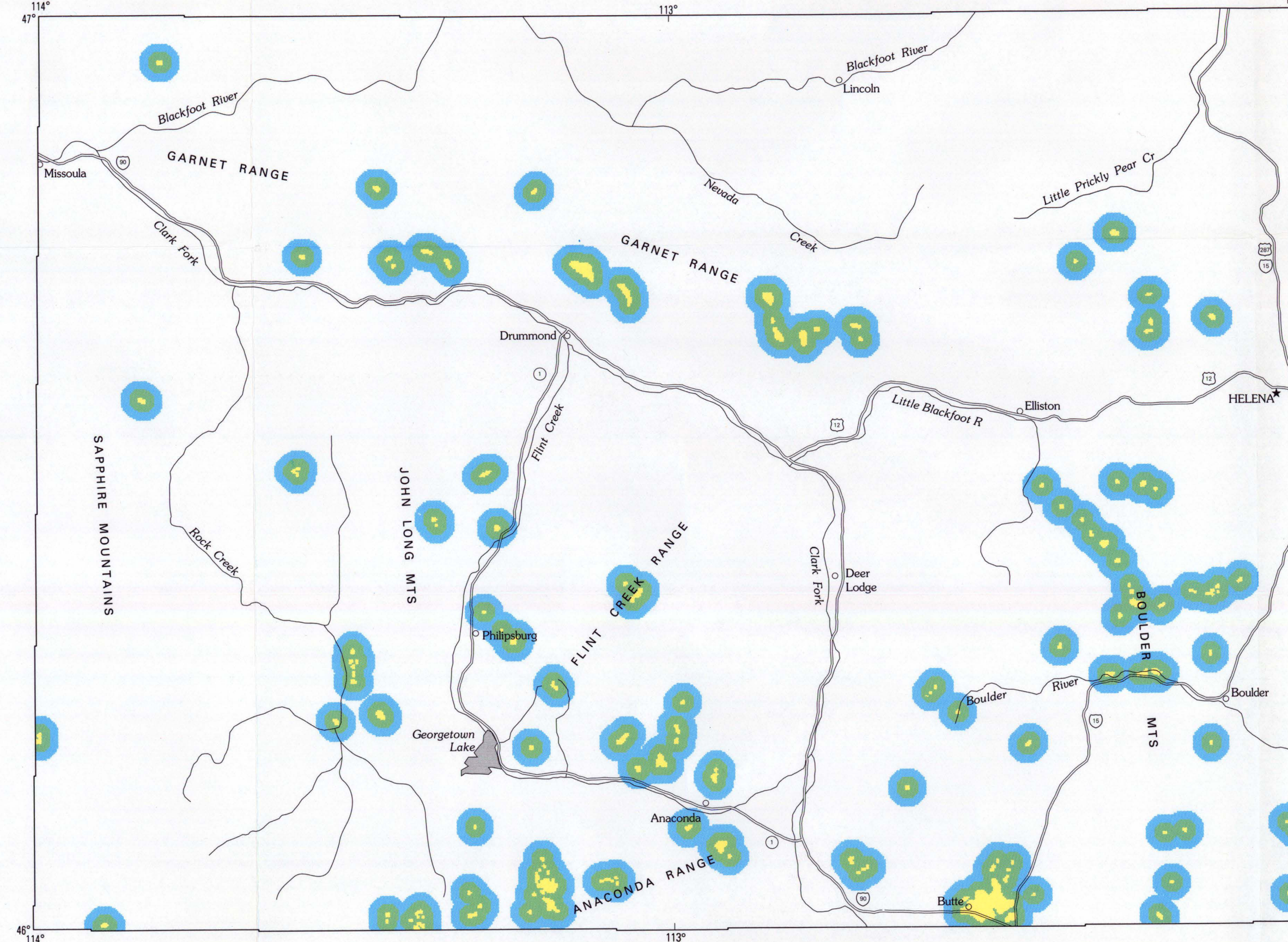
Map F. Map showing areas of favorable geochemical anomalies



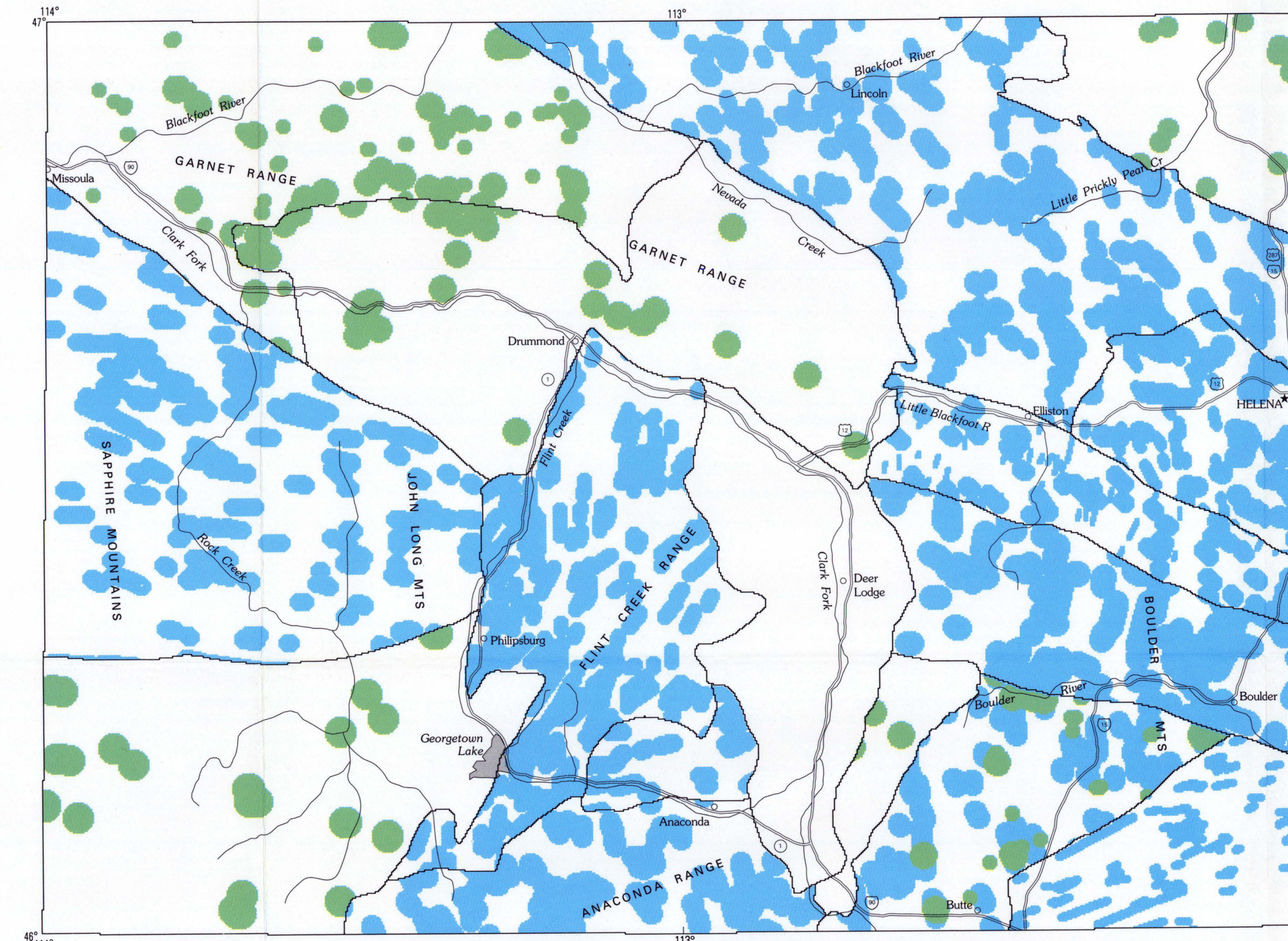
Map I. Map showing favorable zones adjacent to mapped faults



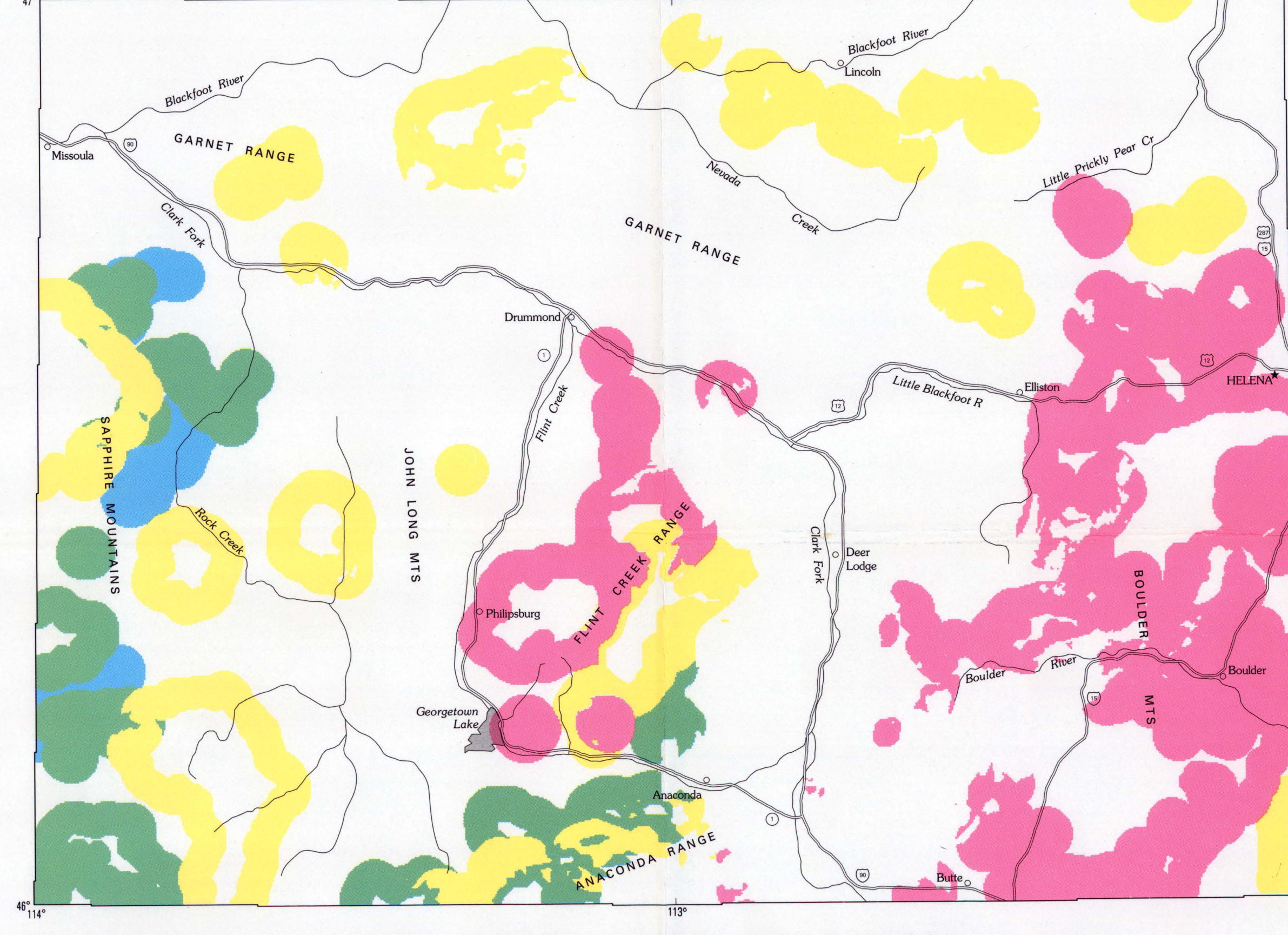
Map D. Map showing host-rock favorability



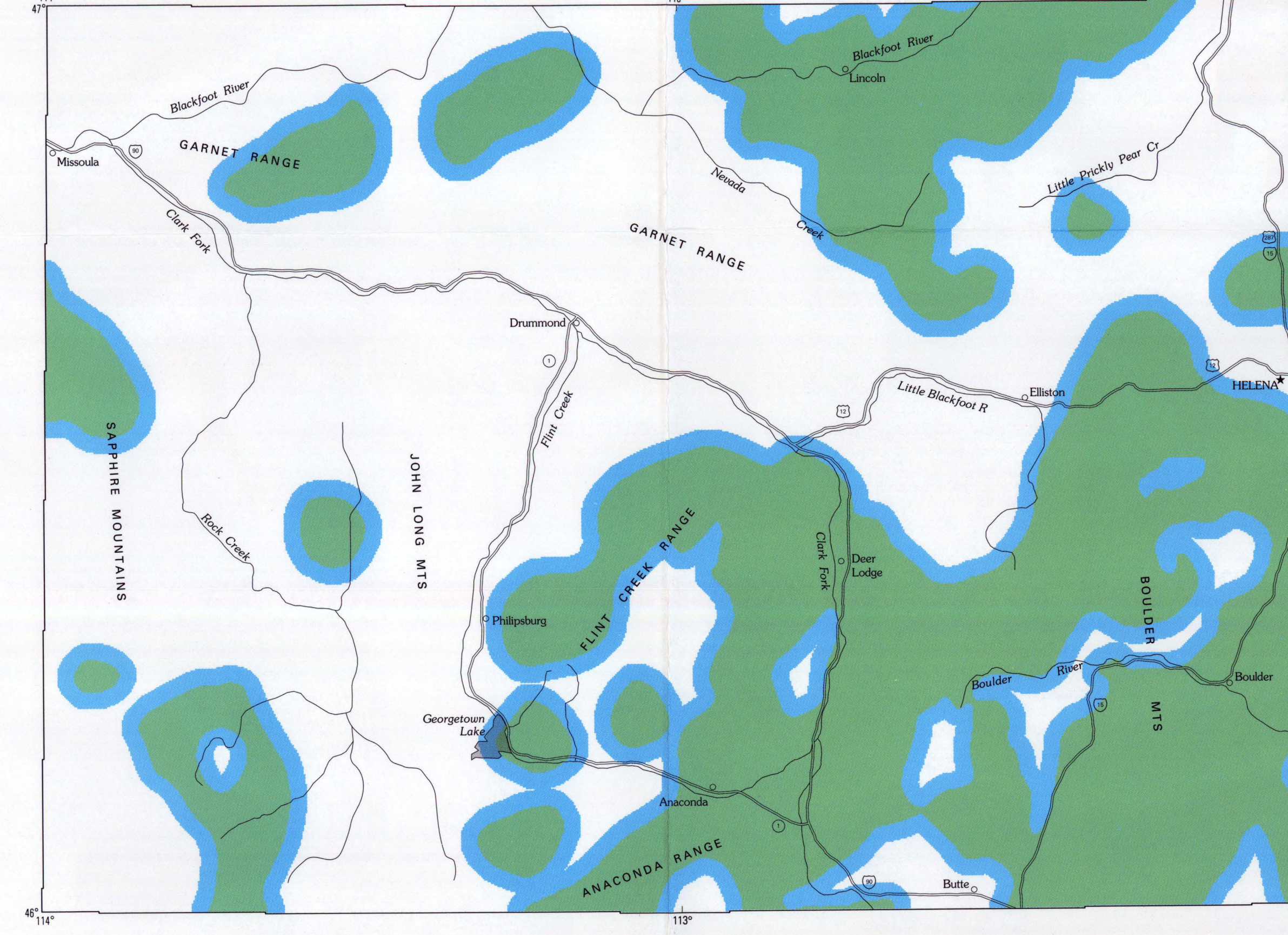
Map G. Map showing favorability of hydrothermally altered areas



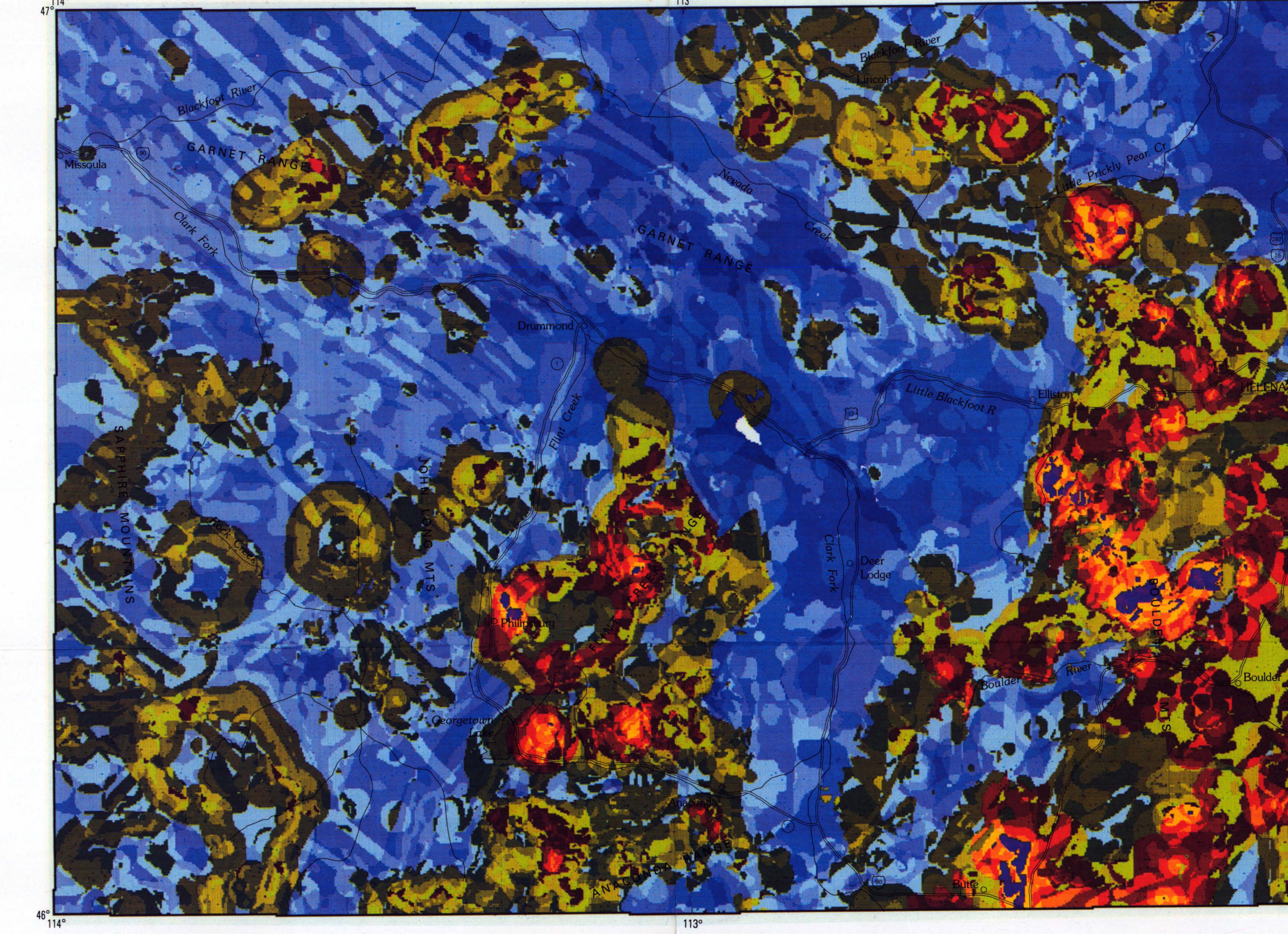
Map J. Map showing favorable zones associated with linear features derived from remotely sensed data



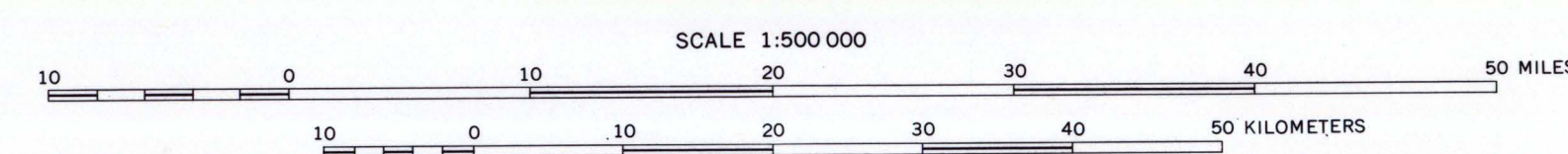
Map E. Map showing favorable zones within and adjacent to mapped plutons



Map H. Map showing favorable areas based on surface and proposed subsurface extent of magnetic plutonic rocks



Map K. Map showing total scores derived by overlay and summation of maps D through J



MAPS SHOWING MINERAL RESOURCE ASSESSMENT FOR VEIN AND REPLACEMENT DEPOSITS OF GOLD, SILVER, COPPER, LEAD, ZINC, MANGANESE, AND TUNGSTEN IN THE BUTTE 1° x 2° QUADRANGLE, MONTANA

By  
J.E. Elliott, C.A. Wallace, G.K. Lee, J.C. Antweiler, D.J. Lidke, L.C. Rowan,  
W.F. Hanna, C.M. Trautwein, J.L. Dwyer, and S.H. Moll  
1992