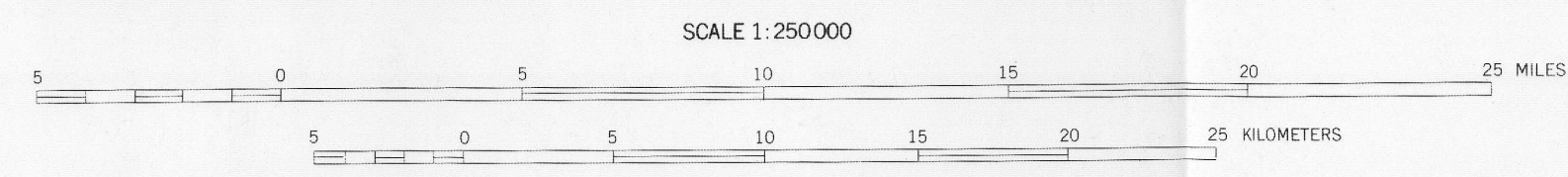


EXPLANATION
X Placer deposit

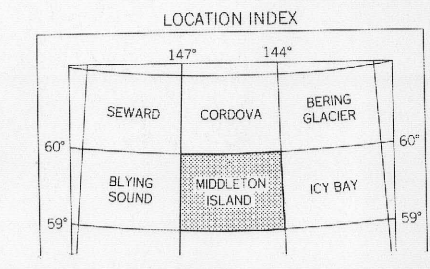
| Name | Principal reference | Commodity |
|------------------|---------------------|-----------|
| Middleton Island | Cobb, 1972, p. 20 | Gold |

REFERENCE
Cobb, E. H., 1972, Placer deposits of Alaska: U.S. Geol. Survey open-file rept., 132 p.

MAPPED, EDITED, AND PUBLISHED BY THE GEOLOGICAL SURVEY 1955



CONTOUR INTERVAL 200 FEET
DOTTED LINES REPRESENT 100-FOOT CONTOURS
DATUM IS MEAN SEA LEVEL
DEPTH CURVES AND SOUNDINGS IN FEET—DATUM IS MEAN LOWER LOW WATER



METALLIC MINERAL RESOURCES MAP OF THE MIDDLETON ISLAND QUADRANGLE, ALASKA

Compiled by Edward H. Cobb, 1972

Reprinted 1984
Interior—Geological Survey, Reston, Va.
For sale by Distribution Section, U.S. Geological Survey, Federal Bldg.,
Box 12, 101 Twelfth Avenue, Fairbanks, AK 99701, and Branch of Distribution,
U.S. Geological Survey, Box 25286, Federal Center, Denver, CO 80225