

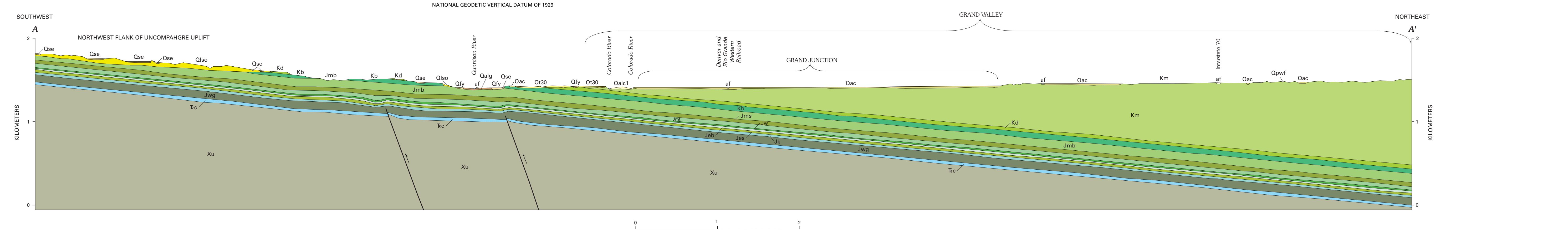
- LIST OF MAP UNITS**
- SURFICIAL UNITS**
- Artificial fill deposits
- af Artificial fill (latest Holocene)
- Alluvial deposits
- Qalc1 Youngest alluvium deposited by the Colorado River (Holocene)
 - Qalg Youngest alluvium deposited by the Gunnison River (Holocene)
 - Qa Alluvium deposited by tributary streams (Holocene and late Pleistocene)
 - Qvf Valley-fill deposit (Holocene and late Pleistocene)
 - Qalc2 Oldest alluvium deposited by the Colorado River (Holocene and latest Pleistocene)
 - Qlgu Terrace alluvium of the Gunnison River, undivided (late to middle Pleistocene)
 - Ql30 Terrace alluvium 30 of the Colorado River (middle Pleistocene)
 - Ql60c Terrace alluvium 60 of the Colorado River (middle Pleistocene)
 - Ql60g Terrace alluvium 60 of the Gunnison River (middle Pleistocene)
 - Ql100 Terrace alluvium 100 of the Colorado River (middle Pleistocene)
 - Ql170 Terrace alluvium 170 of the Colorado River (early Pleistocene)
- Alluvial and colluvial deposits
- Qly Young fan-alluvium and debris-flow deposits (Holocene)
 - Qac Alluvium and colluvium, undivided (Holocene and late Pleistocene)
 - Qpwf Pediment deposit of Walker Field (late Pleistocene)
 - Qaso Old alluvial-slope deposit (late Pleistocene)
 - Qlg Local gravel deposits (middle Pleistocene)
 - Qlg/Ql30 Local gravel deposits over terrace alluvium 30 of the Colorado River (middle Pleistocene)
- Eolian and colluvial deposits
- Qse Eolian sand and sheetwash deposits (Holocene and late Pleistocene)
 - Qse/Ql30 Eolian sand and sheetwash deposits over terrace alluvium 30 of the Colorado River (Holocene to middle Pleistocene)
- Colluvial deposits
- Qlcy Younger landslide deposits (latest Holocene)
 - Qc Colluvium (Holocene and late Pleistocene)
 - Qlso Older landslide deposits (Holocene to middle Pleistocene)
- BEDROCK UNITS**
- Km Mancos Shale (Upper Cretaceous; Campanian to Cenomanian)
 - Kd Dakota Formation (Upper and Lower? Cretaceous; Cenomanian and Albian?)
 - Kb Burro Canyon Formation (Lower Cretaceous; Albian and Aptian)
 - Jmb Morrison Formation (Upper Jurassic)
 - Jms Brushy Basin Member (Tithonian and Kimmeridgian)
 - Jmt Salt Wash Member (Kimmeridgian)
 - Jw Tidwell Member (Kimmeridgian to latest Oxfordian)
 - Jw Wankah Formation (Middle Jurassic; Callovian)
 - Jes Entrada Formation (Middle Jurassic; Callovian)
 - Jeb "Board beds" unit
 - Jes Slick Rock Member
 - Jk Kayenta Formation (Lower Jurassic; Pliensbachian and Sinemurian)
 - Jwg Wingate Sandstone (Lower Jurassic; Pliensbachian to Hettangian)
 - Jc Chinle Formation (Upper Triassic)
 - Xu Meta-igneous gneiss and migmatite meta-sedimentary rocks, undivided (Early Proterozoic)
- Contact—Dashed where approximately located. Hachures on the low side of a scarp terrace where contact is coincident with terrace scarp
- - - Normal fault—Dashed where approximately located; dotted where concealed. Bar and ball on downthrown side. Arrow shows relative motion in cross section
- Anticline axial trace—Dashed where approximately located, dotted where concealed
- Strike and dip of bedding
- Inclined
- Calculated from outcrop pattern using three-point solutions
- Gravel pit (g) or bentonite quarry—Approximately located

Base from U.S. Geological Survey, 1962; photorevised 1973. Polyconic projection, 1927 North American Datum. 10,000-foot grid based on Colorado coordinate system, central zone. 1,000-meter Universal Transverse Mercator grid ticks, zone 12.

SCALE 1:24 000

CONTOUR INTERVAL 20 FEET
DOTTED LINES REPRESENT 10-FOOT CONTOURS
NATIONAL GEODETIC VERTICAL DATUM OF 1929

Geology south of the Colorado River mapped by Robert Scott and William Hood in 1988 and 1999. Geology north of the Gunnison River mapped by Paul Carrara in 1998 and 1999. Digital compilation by Kyle Murray in 2000. Manuscript approved for publication December 26, 2001



GEOLOGIC MAP OF THE GRAND JUNCTION QUADRANGLE, MESA COUNTY, COLORADO

By Robert B. Scott¹, Paul E. Carrara¹, William C. Hood², and Kyle E. Murray¹
2002

¹U.S. Geological Survey, Denver, CO 80225
²515 Dove Court, Grand Junction, CO 81503

Any use of trade names in this publication is for descriptive purposes only and does not imply endorsement by the U.S. Geological Survey. This map was produced on request, directly from digital files, on an electronic plotter. For sale by U.S. Geological Survey Information Services Box 25286, Federal Center, Denver, CO 80225 1-888-ASK-USGS ARCI/NO coverages and a PDF of this map are available at <http://geology.cr.usgs.gov/pub/mf-maps/mf-2363>