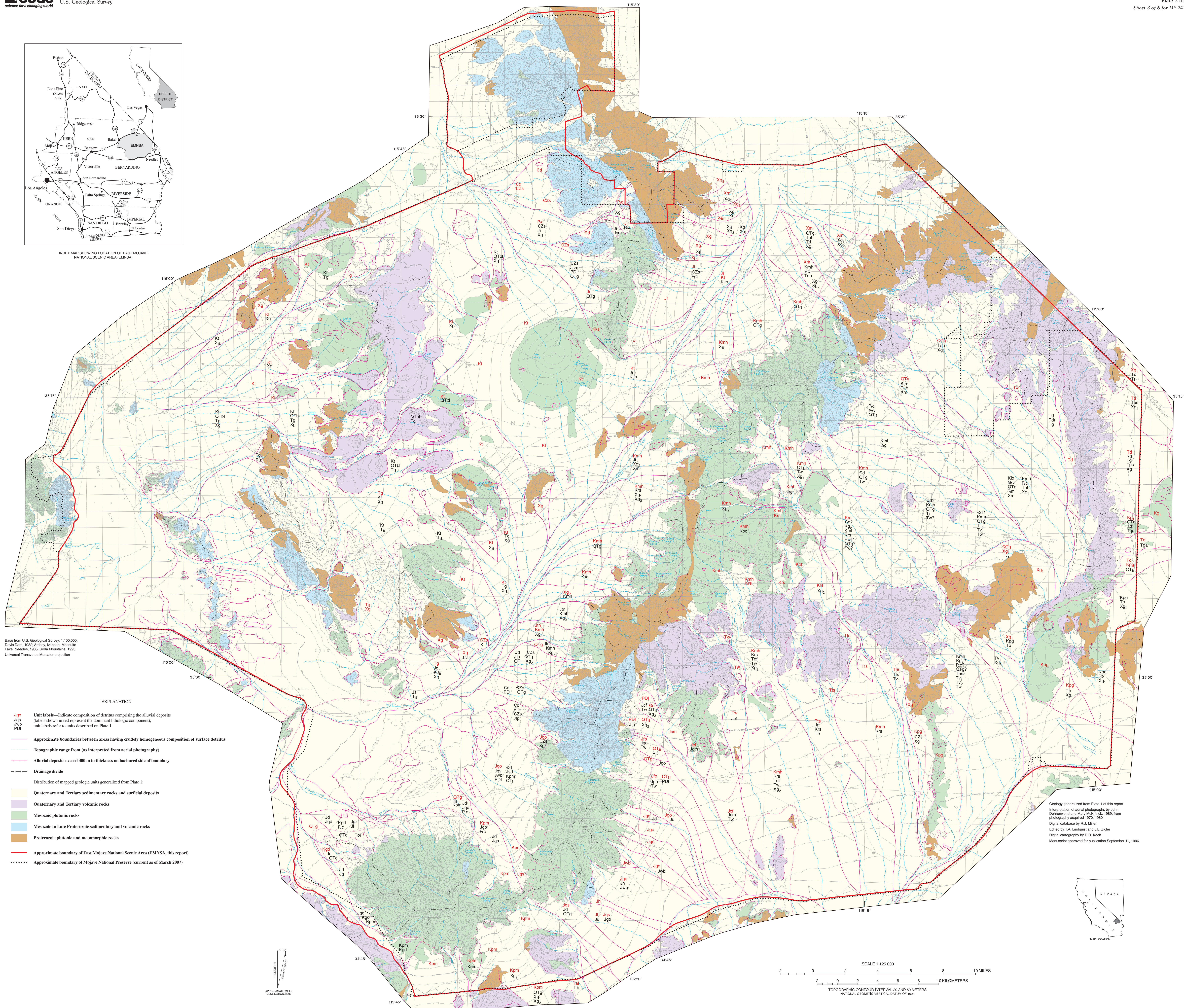


INDEX MAP SHOWING LOCATION OF EAST MOJAVE NATIONAL SCENIC AREA (EMNSA)



Base from U.S. Geological Survey 1:100,000
Davis Dam, 1982; Arroyo, Inopson, Mesquite
Lake, Needles, 1985; Soda Mountains, 1989
Universal Transverse Mercator projection

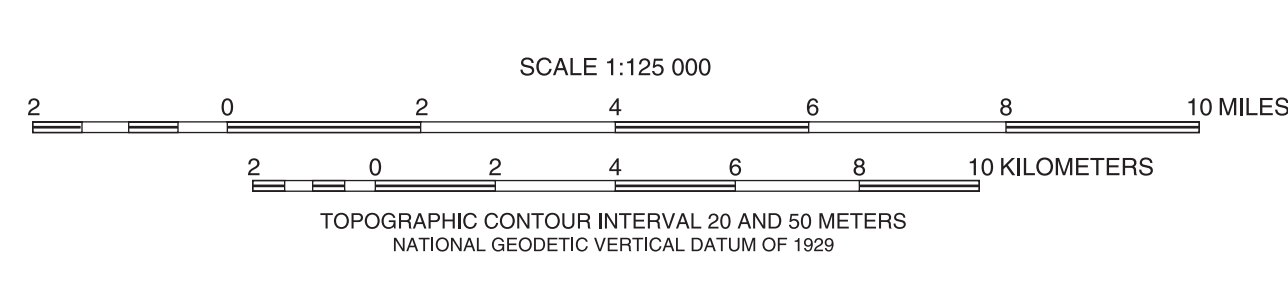
EXPLANATION

- Jgp** Unit labels—Indicate composition of detritus comprising the alluvial deposits (labels shown in red represent the dominant lithologic component); unit labels refer to units described on Plate 1
- Jgp** Unit labels—Indicate composition of detritus comprising the alluvial deposits (labels shown in red represent the dominant lithologic component); unit labels refer to units described on Plate 1
- Approximate boundaries between areas having crudely homogeneous composition of surface detritus
- Topographic range front (as interpreted from aerial photography)
- Alluvial deposits exceed 300 m in thickness on hatched side of boundary
- Drainage divide
- Distribution of mapped geologic units generalized from Plate 1:
 - Quaternary and Tertiary sedimentary rocks and surficial deposits
 - Quaternary and Tertiary volcanic rocks
 - Mesozoic plutonic rocks
 - Mesozoic to Late Proterozoic sedimentary and volcanic rocks
 - Proterozoic plutonic and metamorphic rocks
- Approximate boundary of East Mojave National Scenic Area (EMNSA, this report)
- Approximate boundary of Mojave National Preserve (current as of March 2007)

Geology generalized from Plate 1 of this report
Interpretation of aerial photographs by John
Dohrenwend and Mary McKittrick, 1988, from
photographs acquired 1970, 1980
Digital database by P.L. Miller
Edited by T.A. Lindquist and J.L. Ziegler
Digital cartography by P.D. Koch
Manuscript approved for publication September 11, 1998



APPROXIMATE MAP
DECLINATION 2007



Estimated Extent of Pediments and Adjacent Areas of Thin Alluvial Cover, Including Generalized Lithologic Content of Piedmont Deposits and Inferred Thickness of Cenozoic Cover in the East Mojave National Scenic Area, California

By
John C. Dohrenwend and Mary A. McKittrick

2007

Theobald, T.G., ed., 2007. Geology and mineral resources of the East Mojave National Scenic Area, San Bernardino County, California. U.S. Geological Survey Bulletin 2160. Paper photo of plates for sale as MF-2414 from U.S. Geological Survey, Information Services, Box 25088, Denver, Colorado 80225, or call 1-888-486-1555. Any use of trade, firm, or product names in this publication is for descriptive purposes only and does not imply endorsement by the U.S. Government.