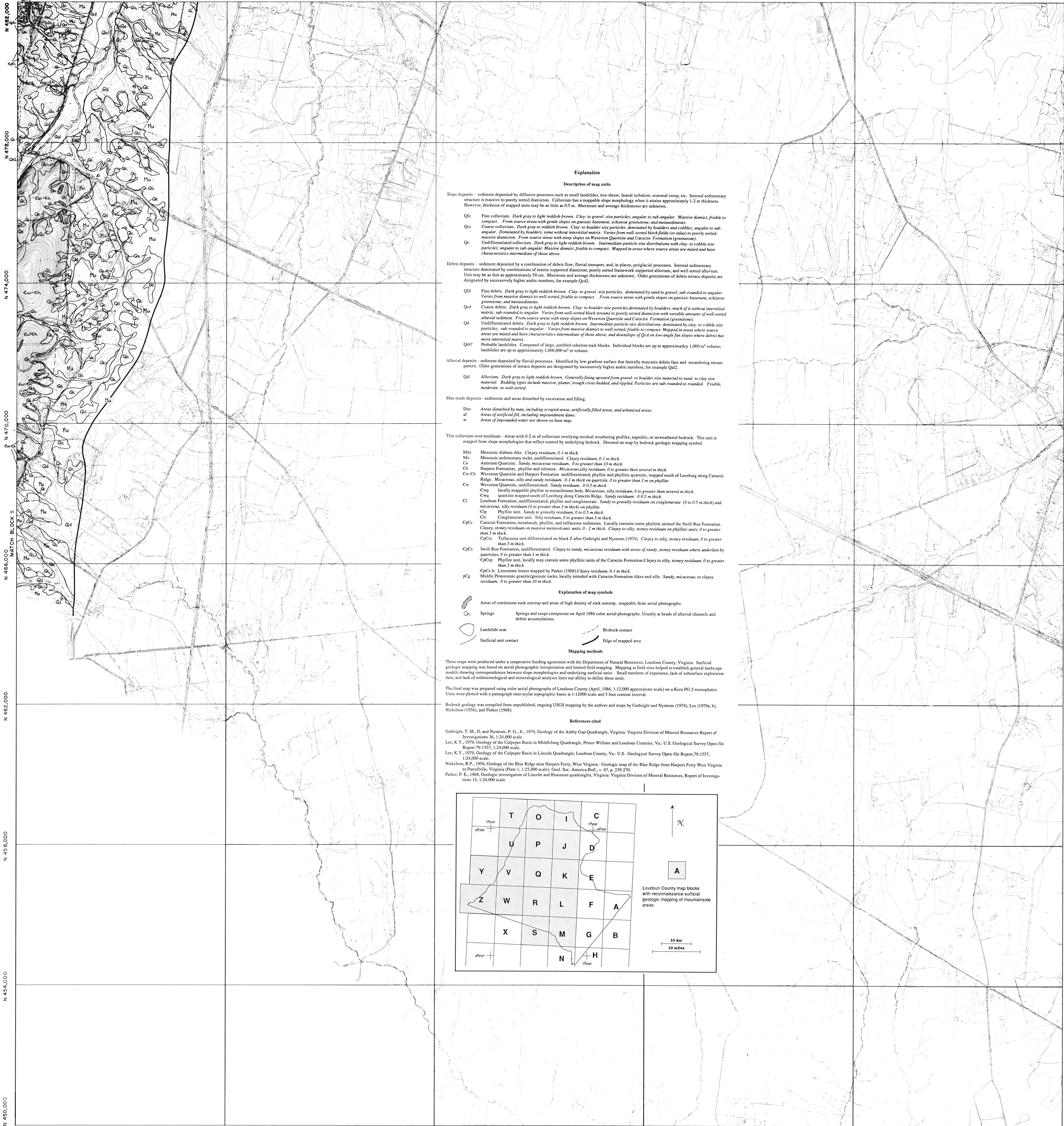


E 2.268.000

MATCH BLOCK L



Disclaimer:
Quality of basemap is variable, resulting in areas of poor reproduction



**Reconnaissance Surficial Geologic Map
of the Mountainous Parts of Loudoun County, Virginia**

Block M

Robert B. Jacobson and J. Stephen Schindle

LOUDOUN COUNTY
VIRGINIA

This report is preliminary and has not been reviewed for conformity with U.S. Geological Survey editorial standards (or with the North American Stratigraphic Code). Any use of trade, product or firm names is for descriptive purposes only and does not imply endorsement by the U.S. Government.

Block M PCT

1990