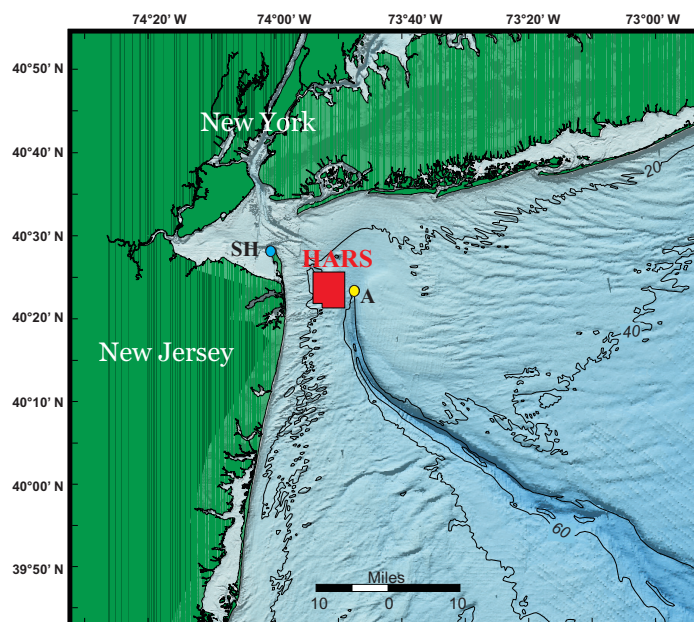


Figure 1



**Figure 1.** Location map showing the area offshore of New York and New Jersey. The Historic Area Remediation Site (HARS) is shown in red. Tidal elevations measured at Sandy Hook (SH) and Station A were used to correct the multibeam observations for fluctuations in sea level height during the survey. 20, 40 and 60 m contours shown on color-coded shaded relief.

Butman, Bradford, Danforth, W.W., Knowles, S.C., May, Brian, and Serrett, Laurie, 2002. Sea Floor Topography and Backscatter Intensity of the Historic Remediation Site (HARS), Offshore of New York, Based on Multibeam Surveys Conducted in 1996, 1998 and 2000, U.S. Geological Survey Open File Report 00-503. 1 DVD-ROM.