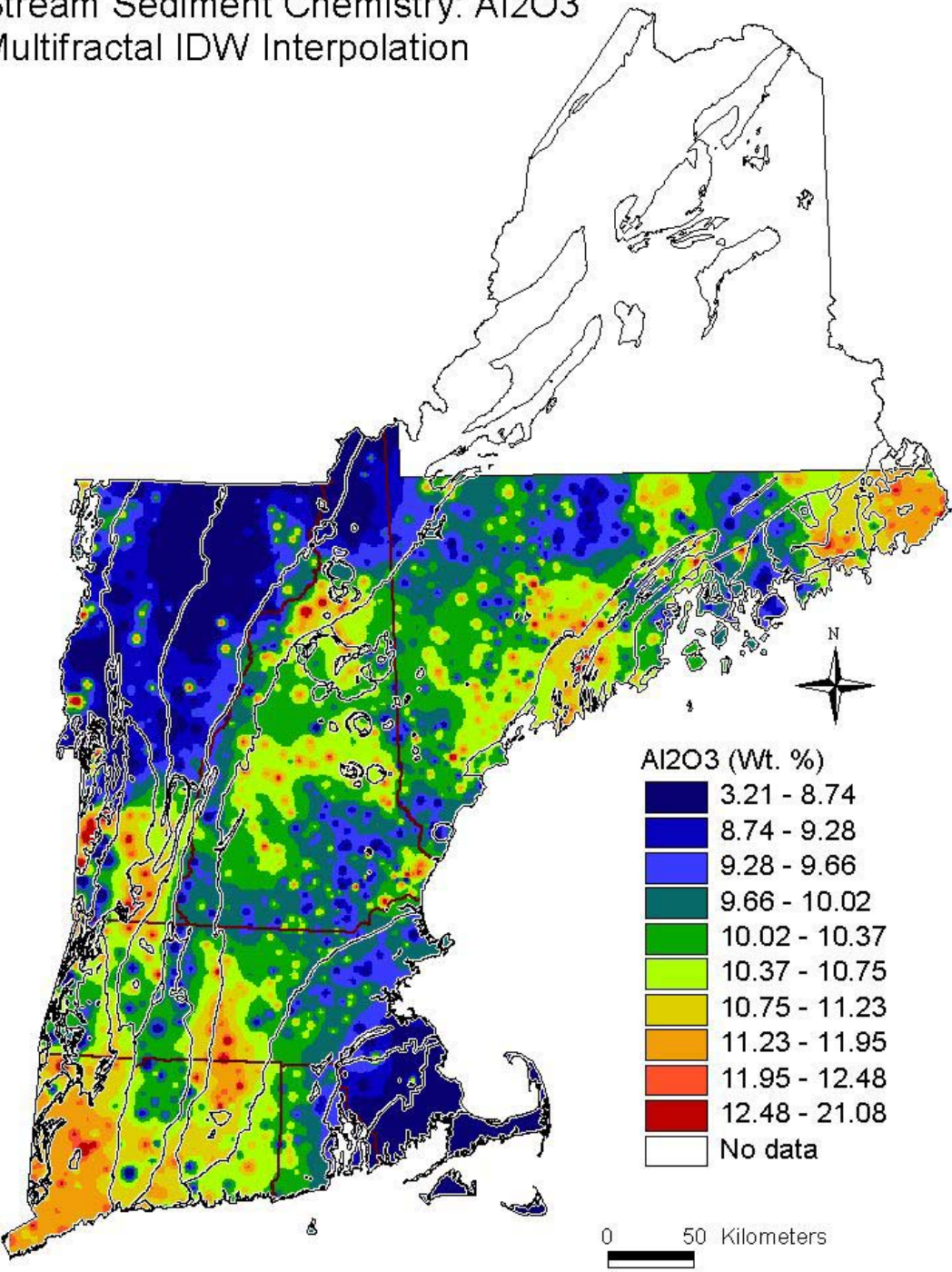


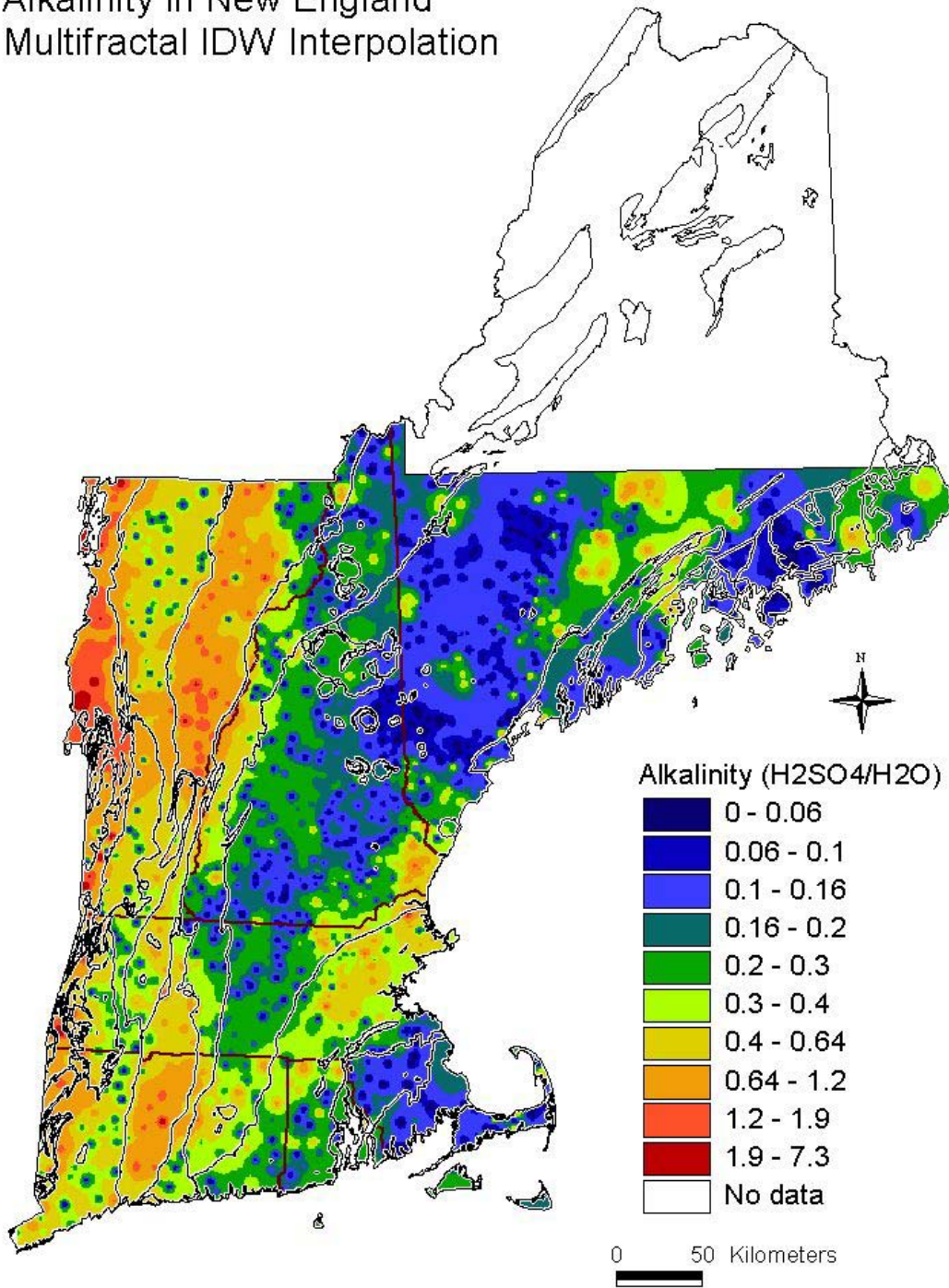
## **Stream Sediment Chemistry of New England: Multifractal IDW Interpolation Maps**

for all elements (listed alphabetically, Al<sub>2</sub>O<sub>3</sub>-Zr), with geologic province boundary overlay, are provided on the following pages **(2-26)**.

Stream Sediment Chemistry: Al<sub>2</sub>O<sub>3</sub>  
Multifractal IDW Interpolation

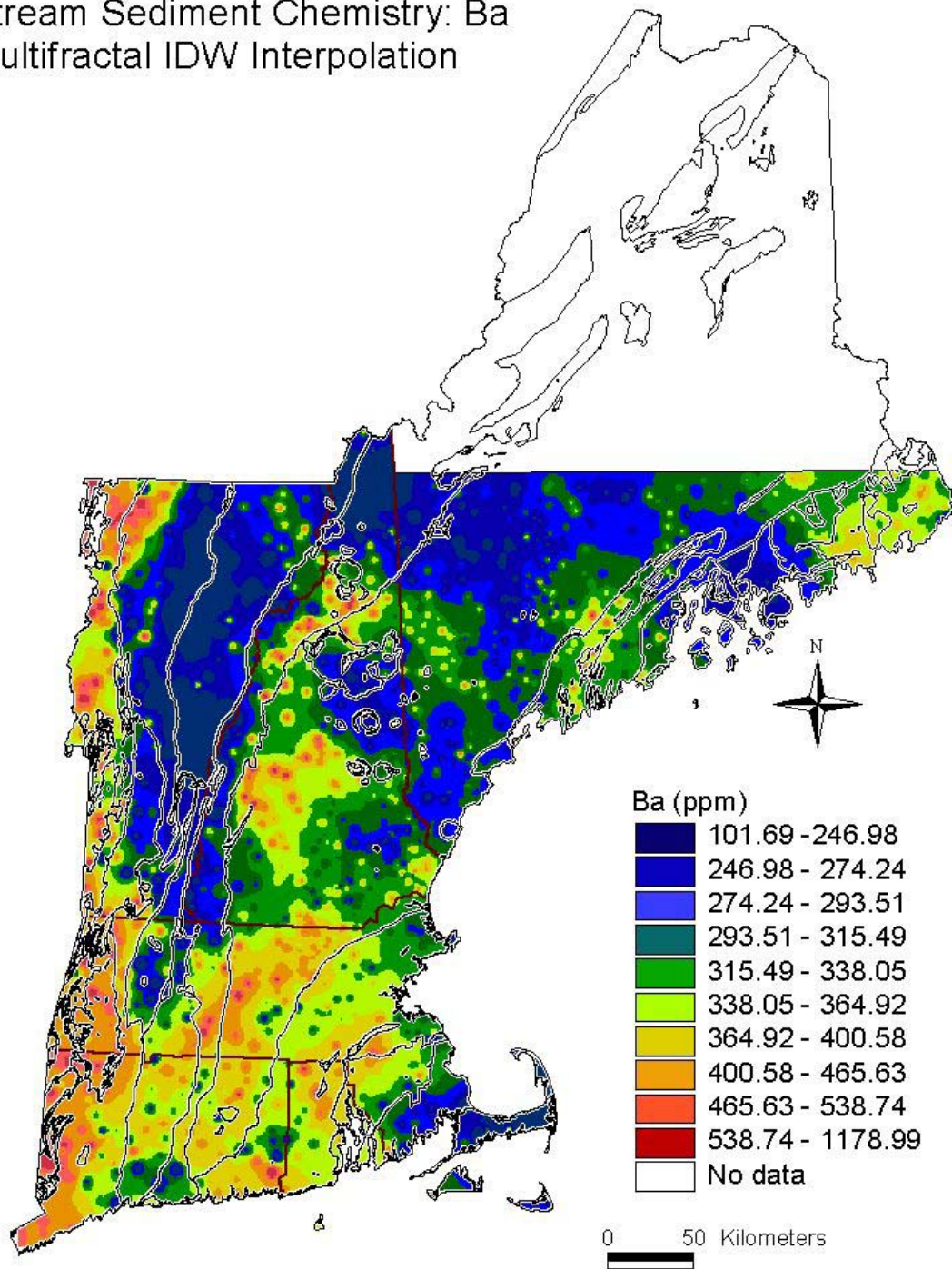


# Alkalinity in New England Multifractal IDW Interpolation

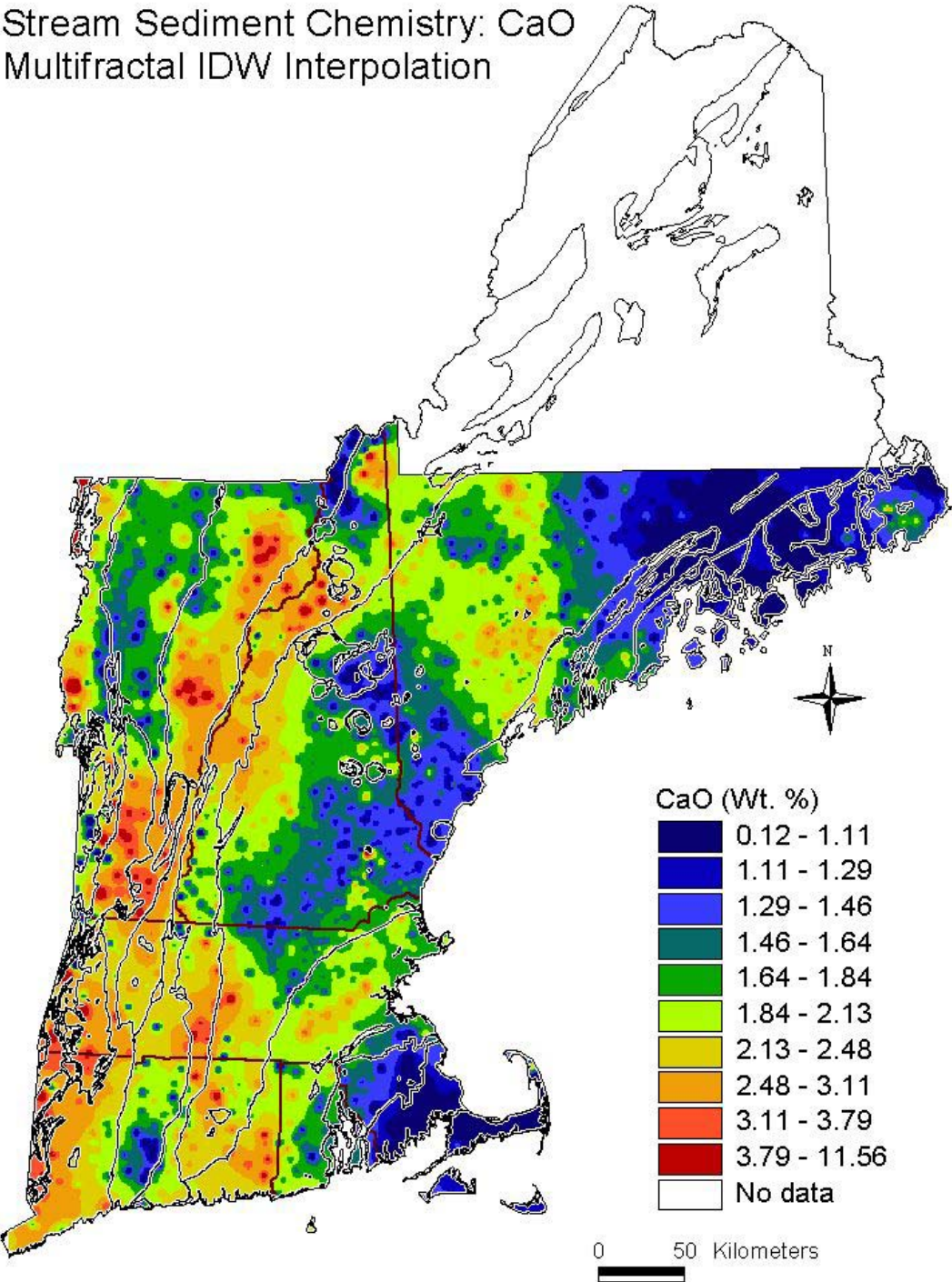




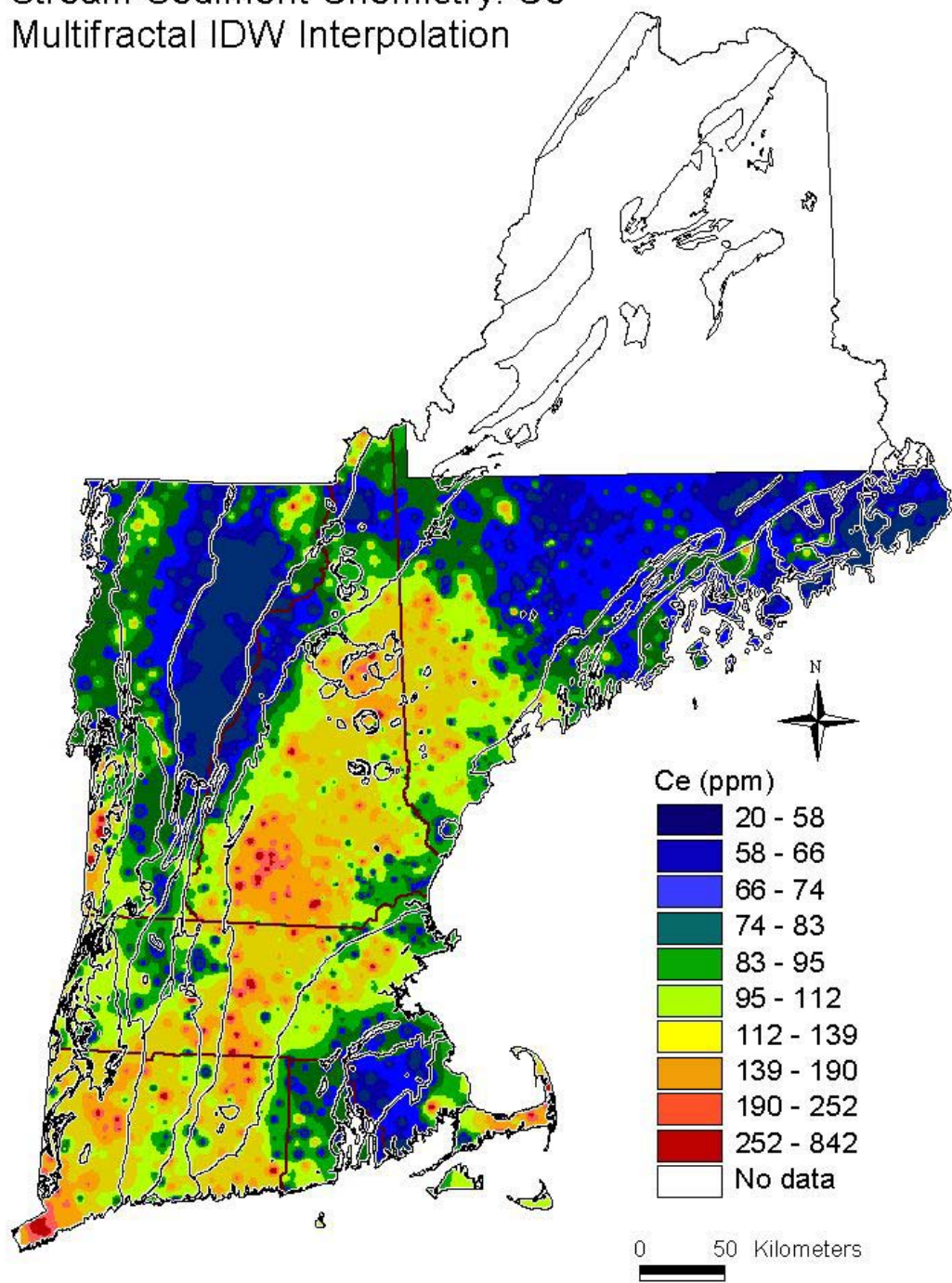
# Stream Sediment Chemistry: Ba Multifractal IDW Interpolation



# Stream Sediment Chemistry: CaO Multifractal IDW Interpolation

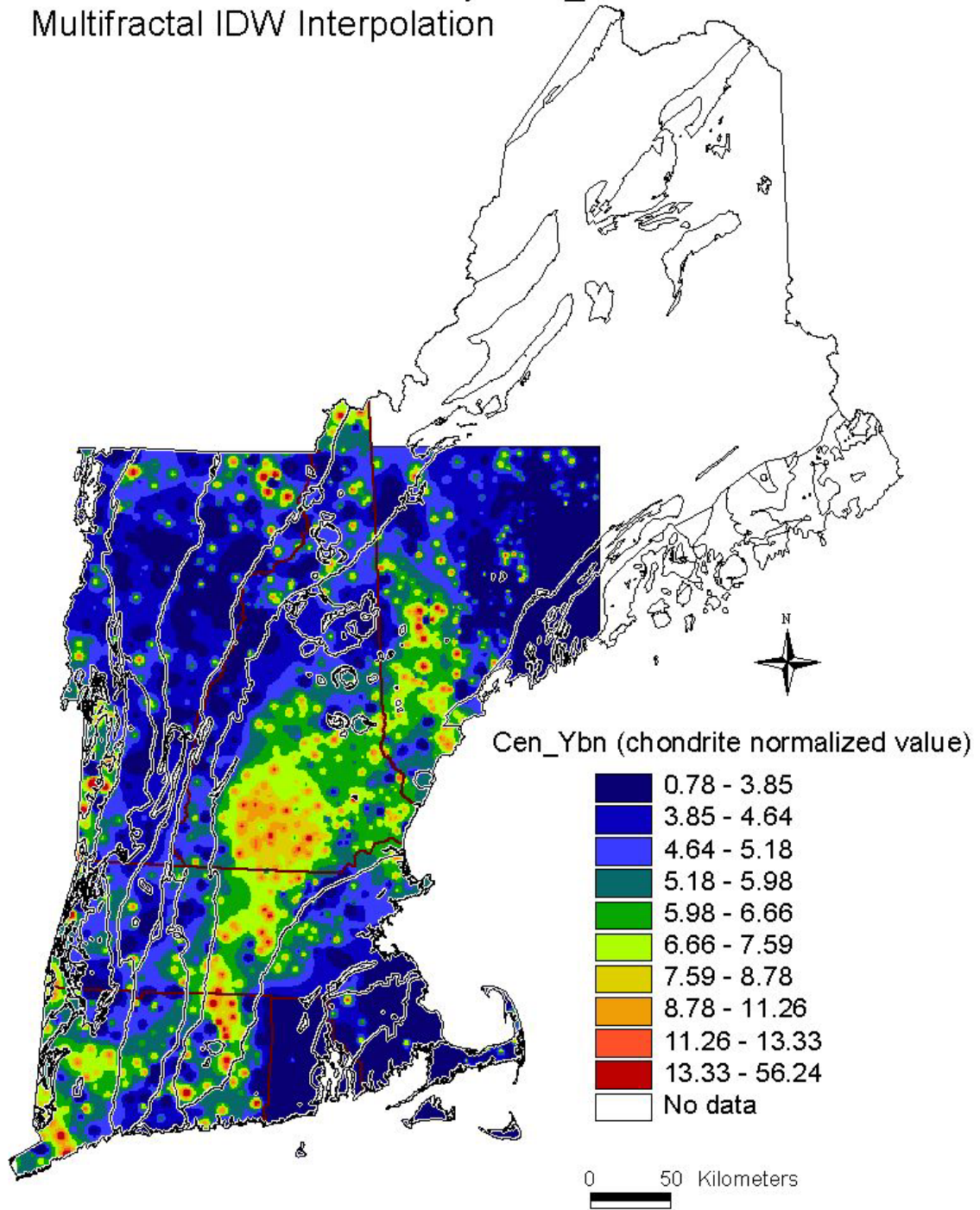


# Stream Sediment Chemistry: Ce Multifractal IDW Interpolation





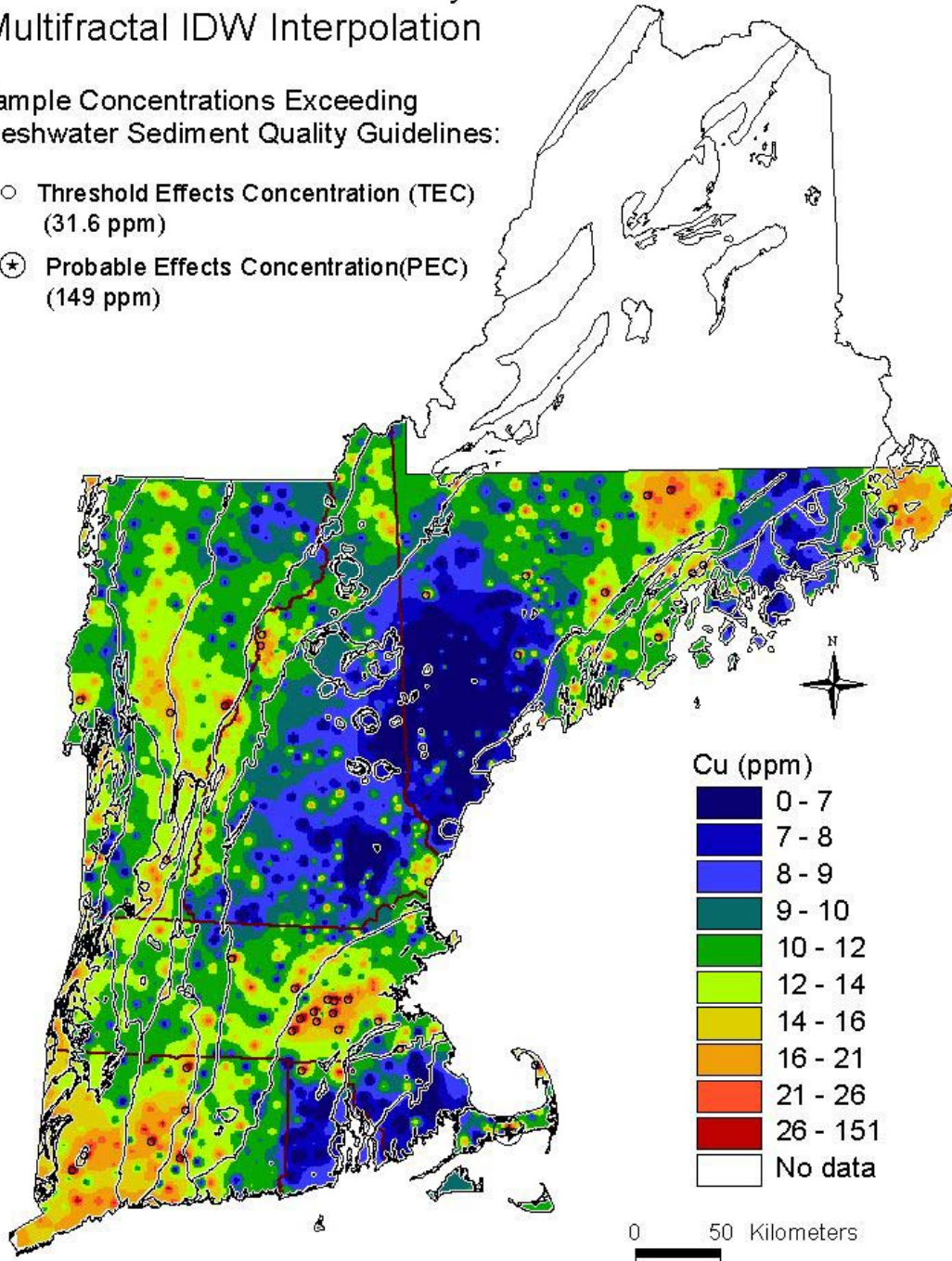
Stream Sediment Chemistry: Cen\_Ybn  
Multifractal IDW Interpolation



# Stream Sediment Chemistry: Cu Multifractal IDW Interpolation

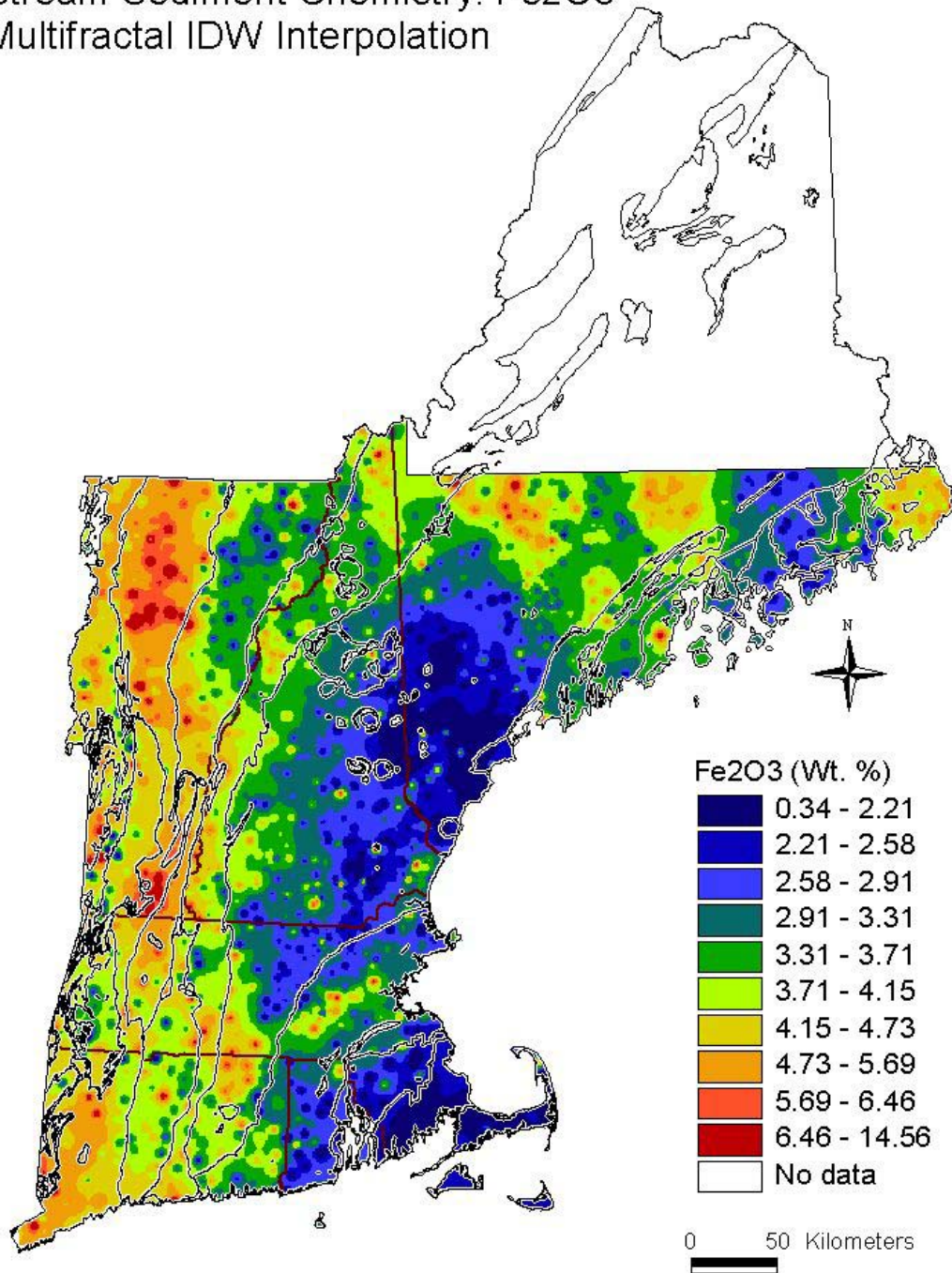
Sample Concentrations Exceeding  
Freshwater Sediment Quality Guidelines:

- Threshold Effects Concentration (TEC)  
(31.6 ppm)
- ⊕ Probable Effects Concentration(PEC)  
(149 ppm)





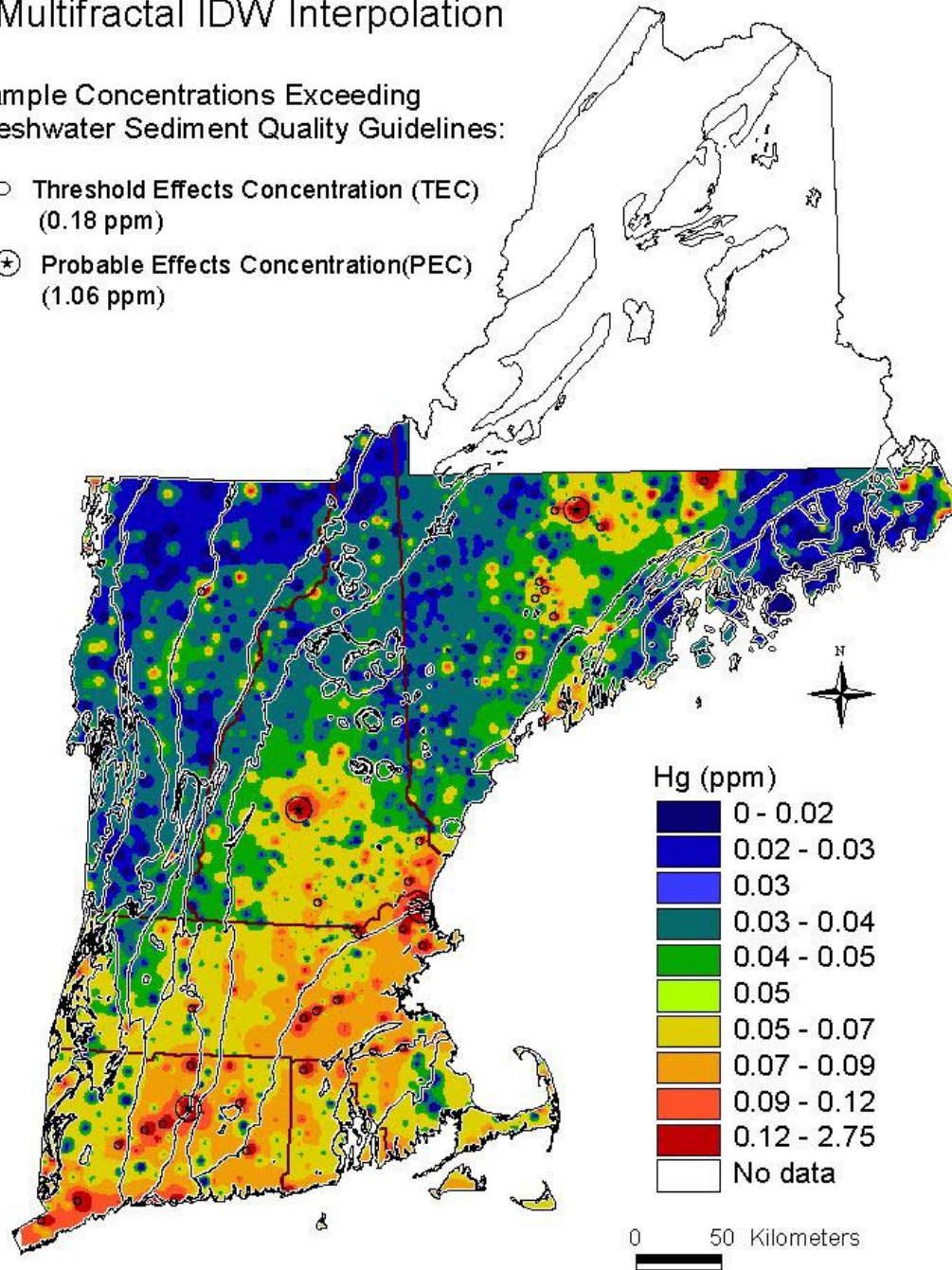
Stream Sediment Chemistry: Fe<sub>2</sub>O<sub>3</sub>  
Multifractal IDW Interpolation



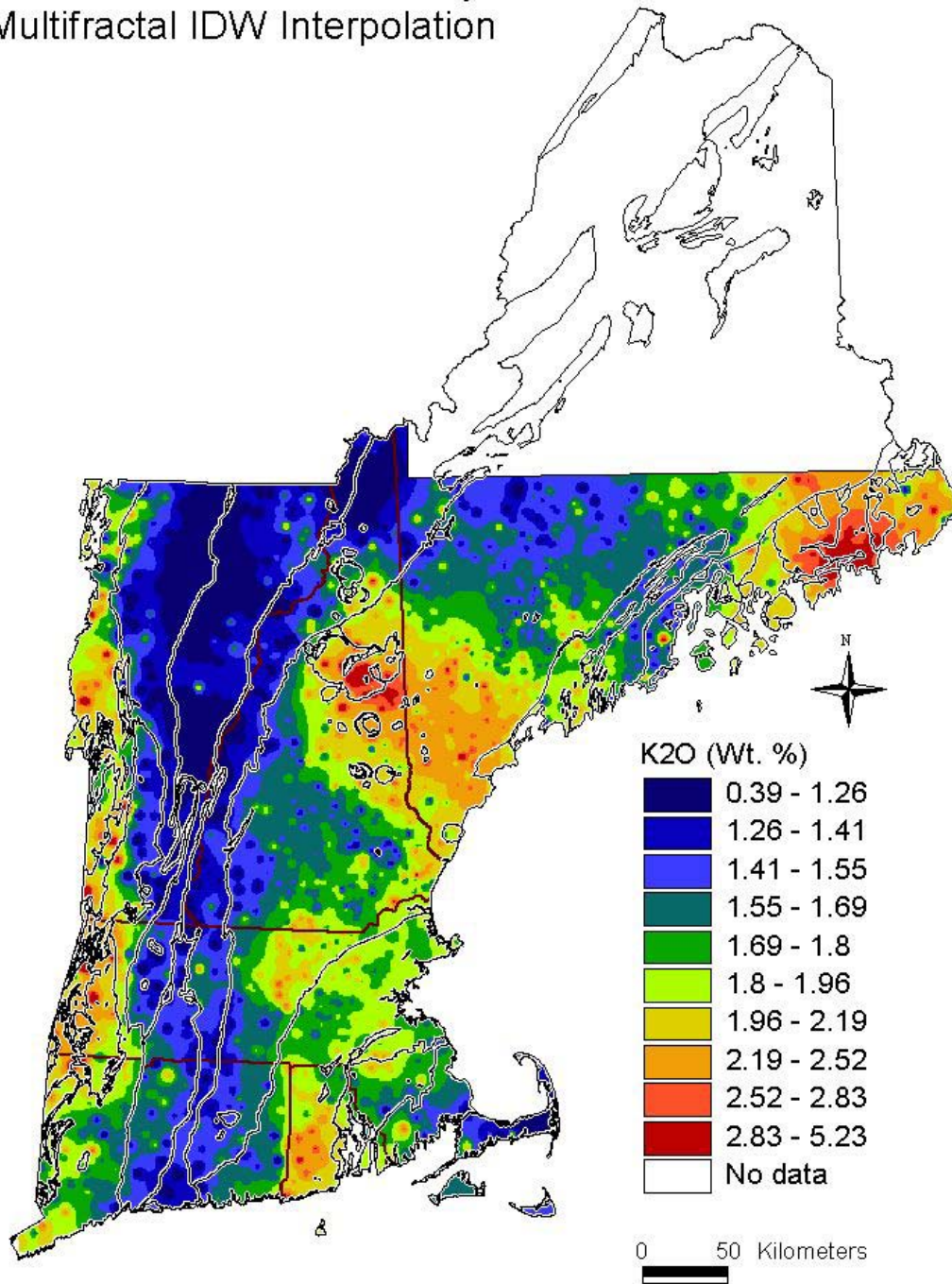
# Stream Sediment Chemistry: Hg Multifractal IDW Interpolation

Sample Concentrations Exceeding  
Freshwater Sediment Quality Guidelines:

- Threshold Effects Concentration (TEC)  
(0.18 ppm)
- ⊕ Probable Effects Concentration(PEC)  
(1.06 ppm)

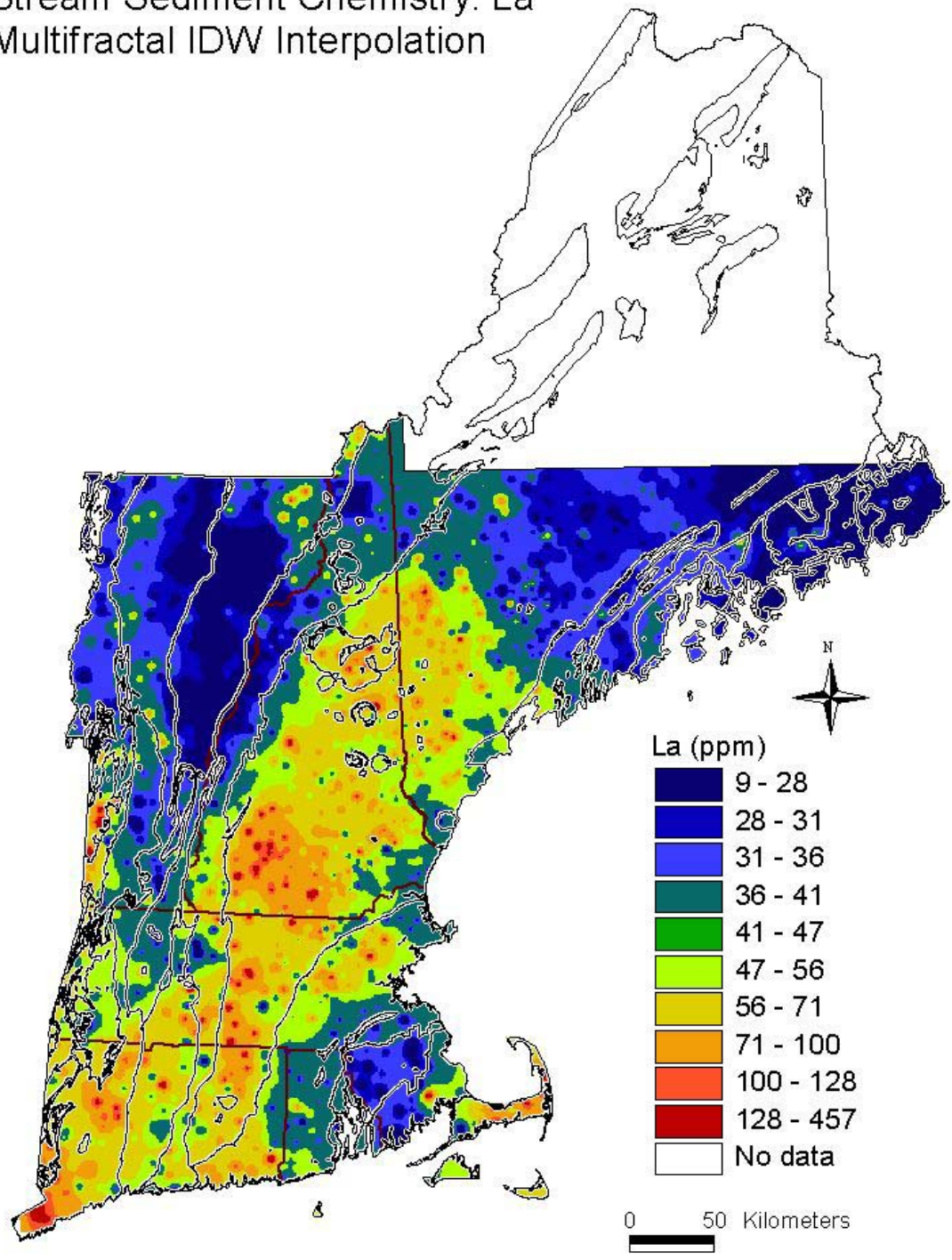


Stream Sediment Chemistry: K<sub>2</sub>O  
Multifractal IDW Interpolation

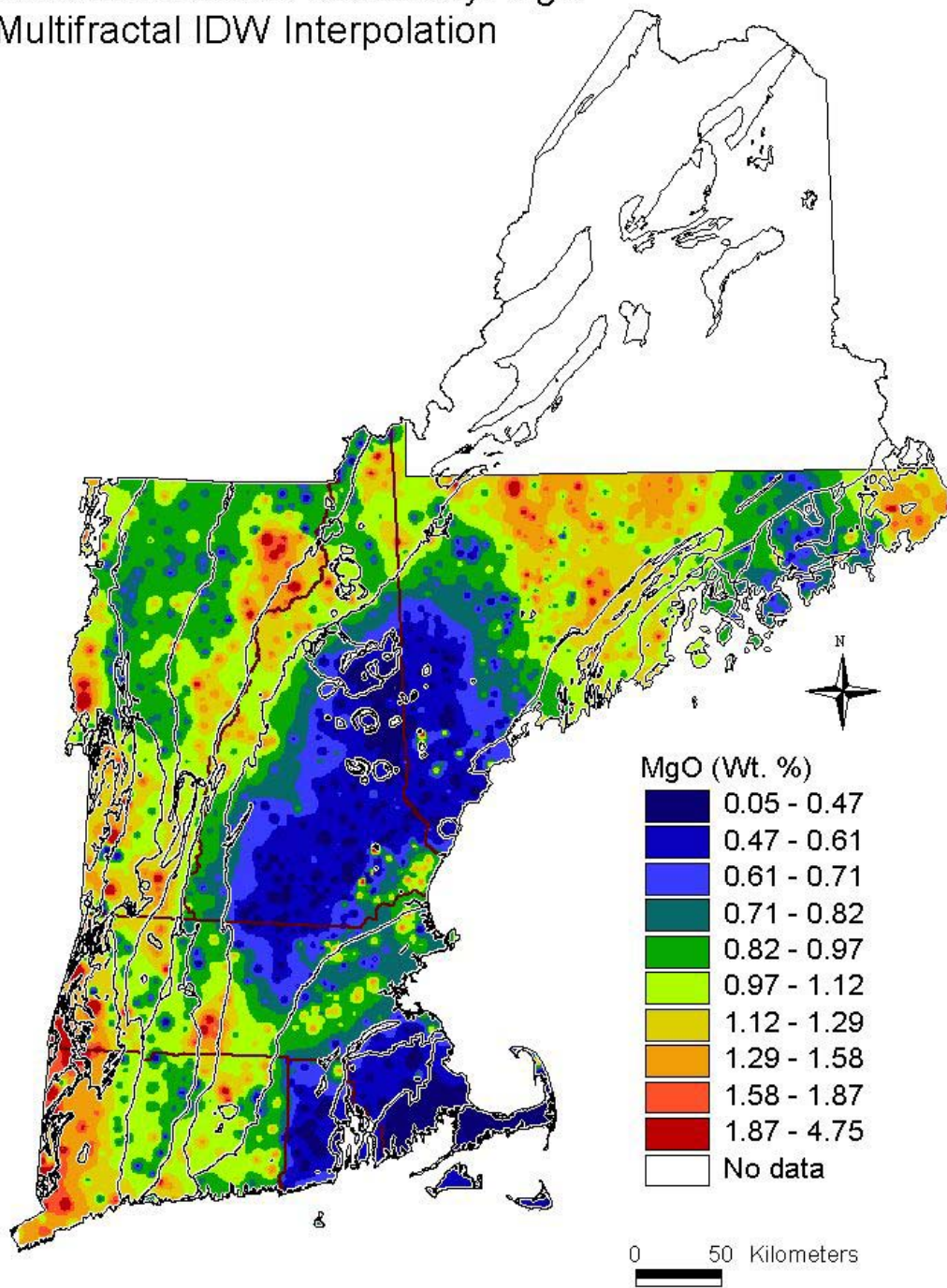




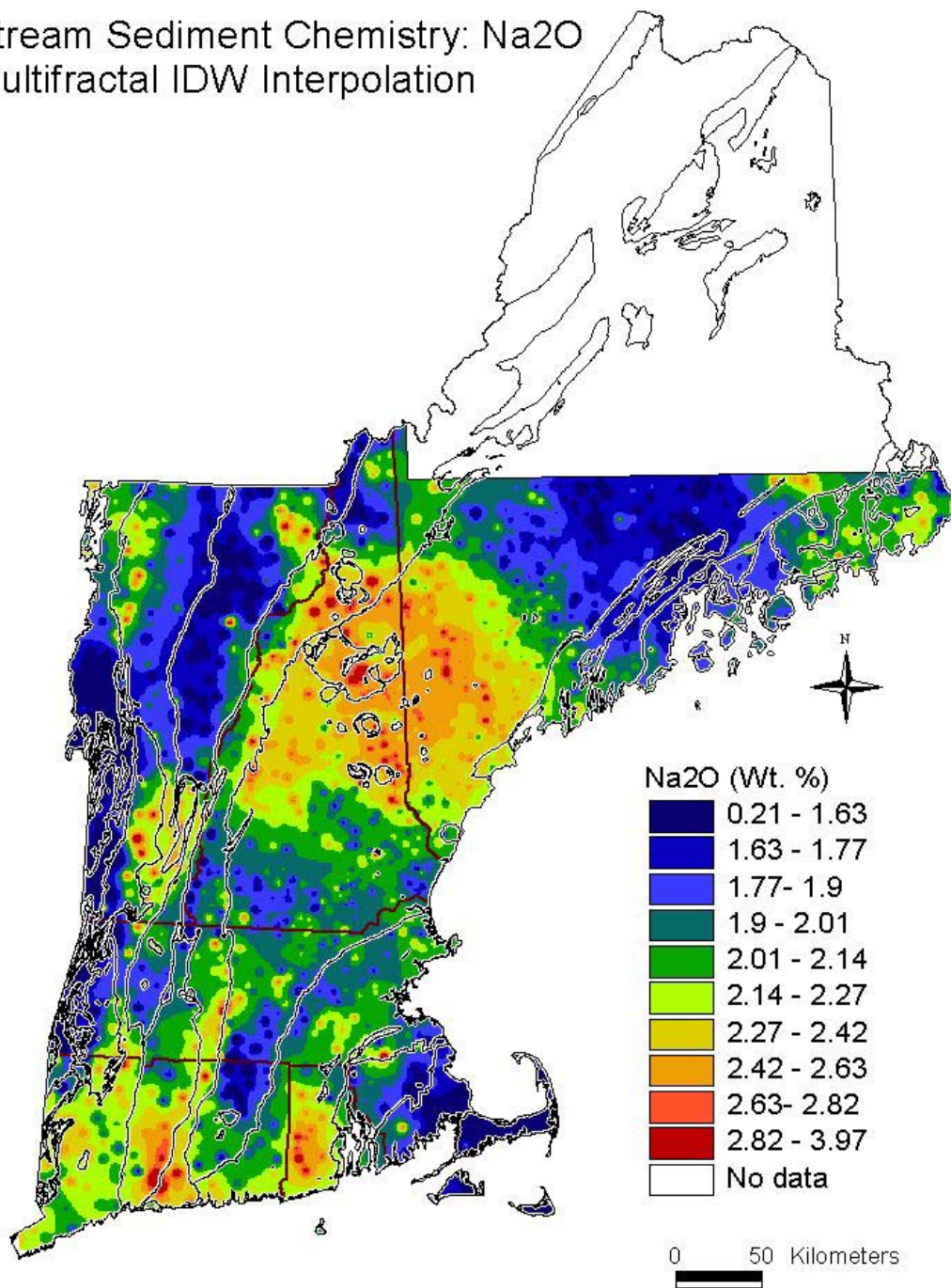
# Stream Sediment Chemistry: La Multifractal IDW Interpolation



Stream Sediment Chemistry: MgO  
Multifractal IDW Interpolation

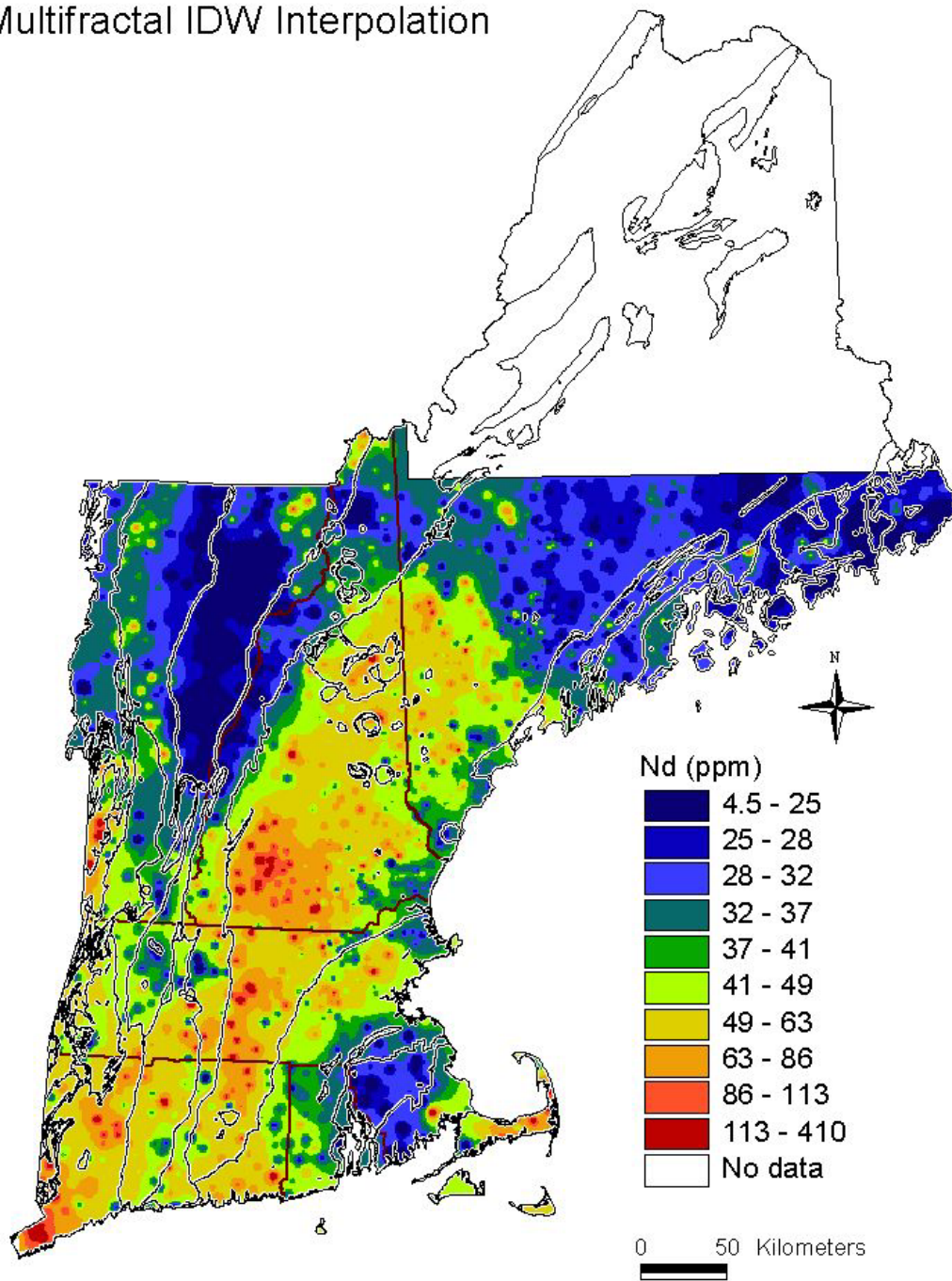


# Stream Sediment Chemistry: Na<sub>2</sub>O Multifractal IDW Interpolation





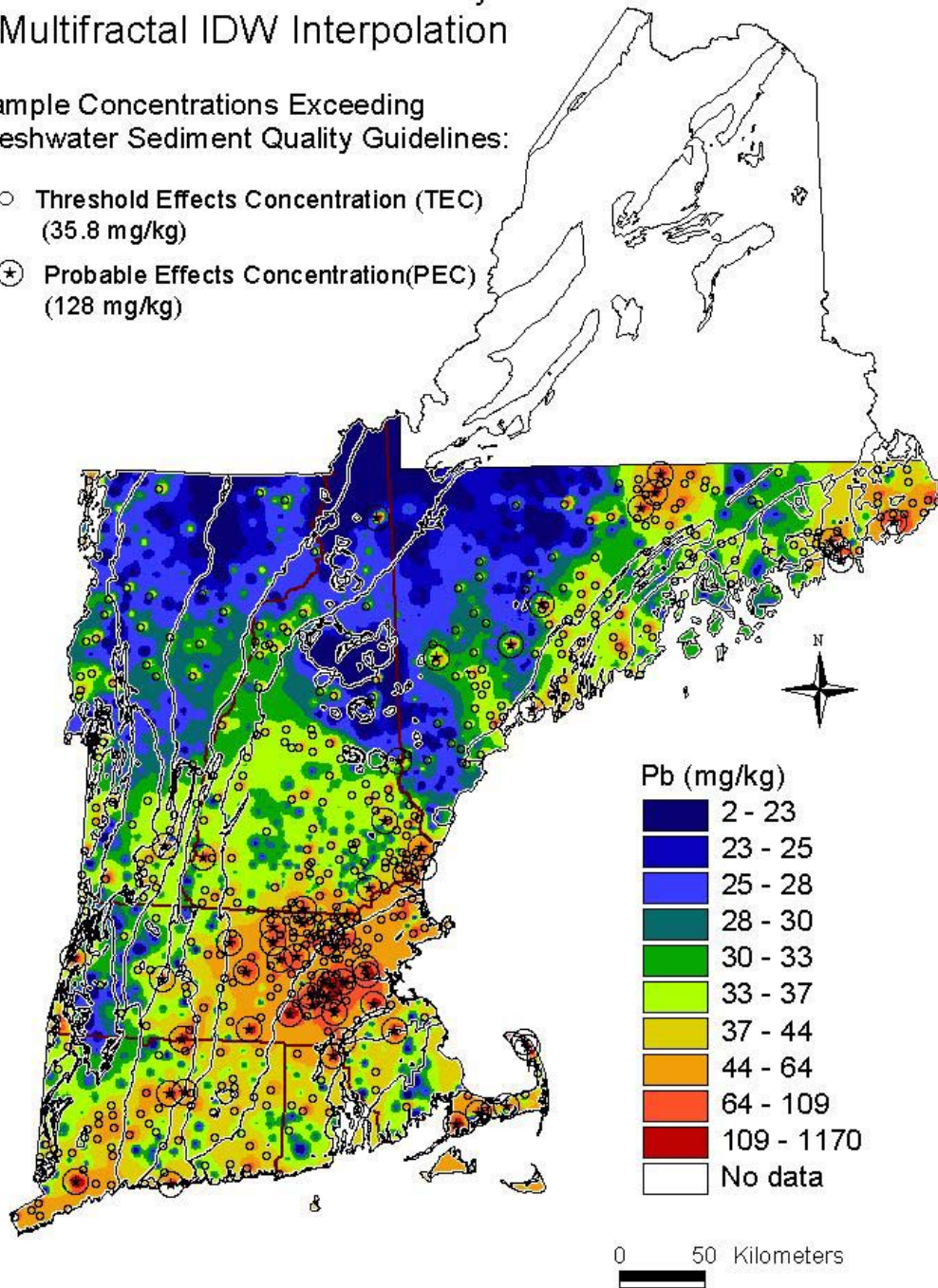
# Stream Sediment Chemistry: Nd Multifractal IDW Interpolation



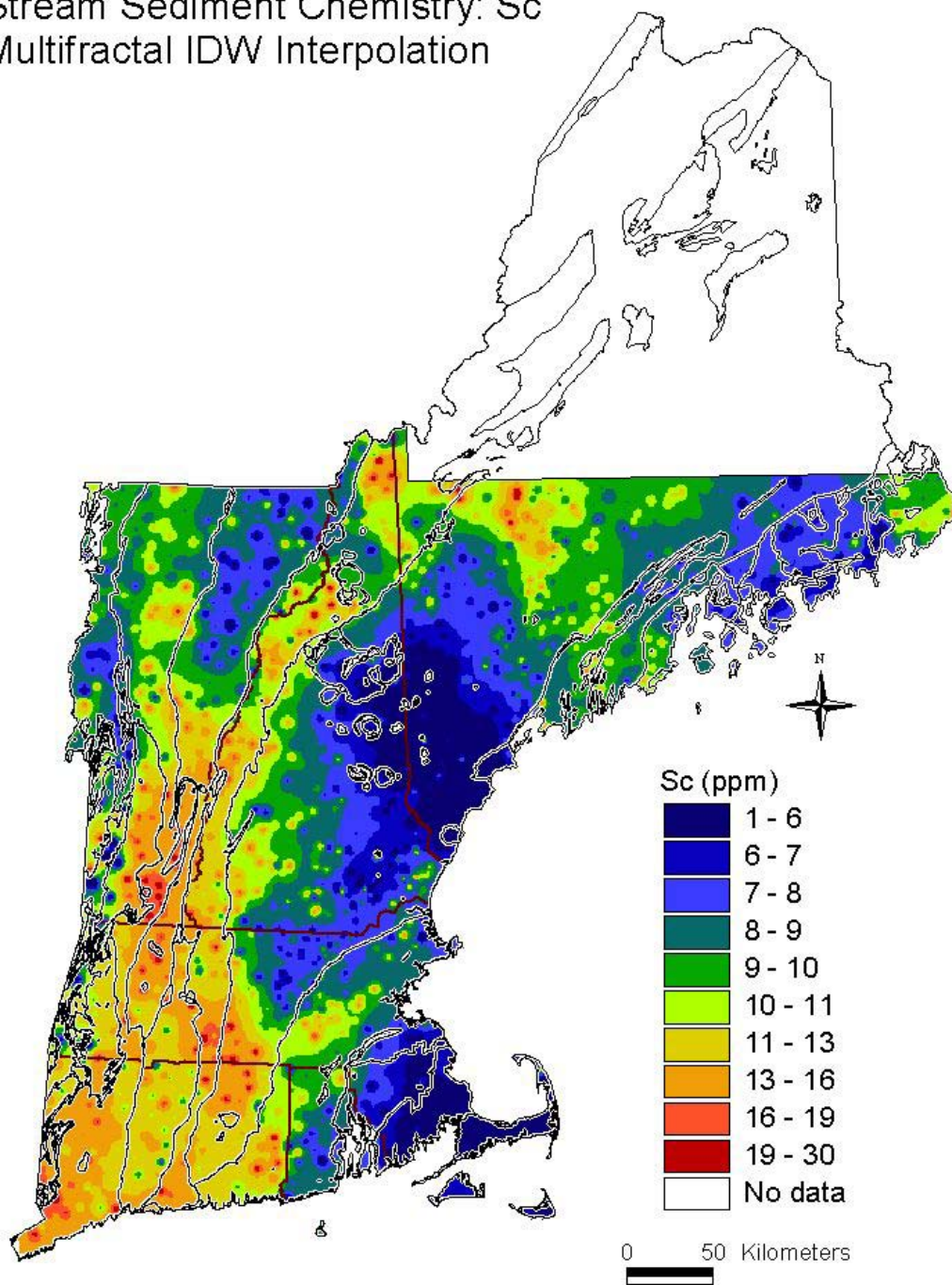
## Stream Sediment Chemistry: Pb Multifractal IDW Interpolation

Sample Concentrations Exceeding  
Freshwater Sediment Quality Guidelines:

- Threshold Effects Concentration (TEC)  
(35.8 mg/kg)
- ⊕ Probable Effects Concentration (PEC)  
(128 mg/kg)

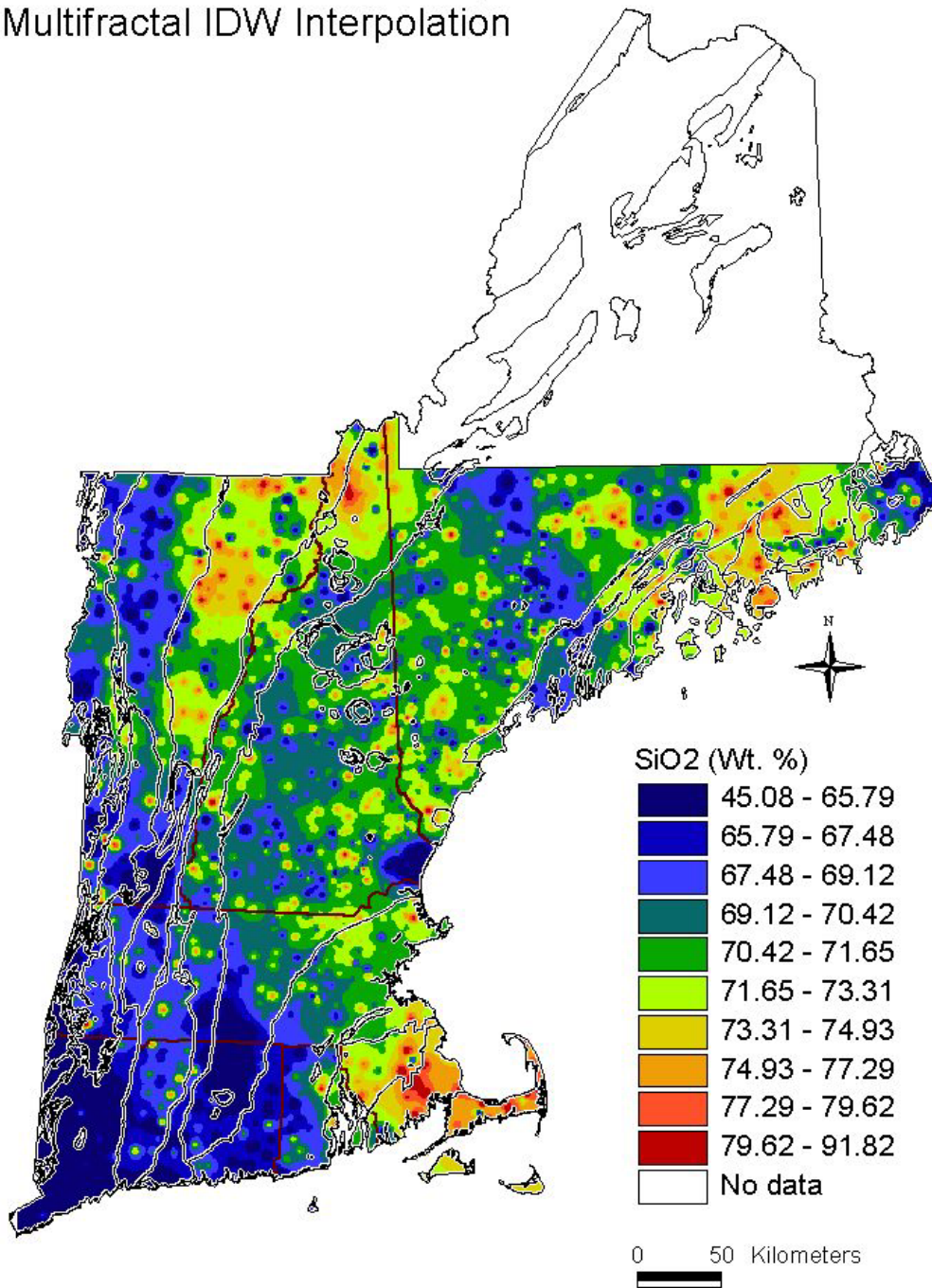


# Stream Sediment Chemistry: Sc Multifractal IDW Interpolation

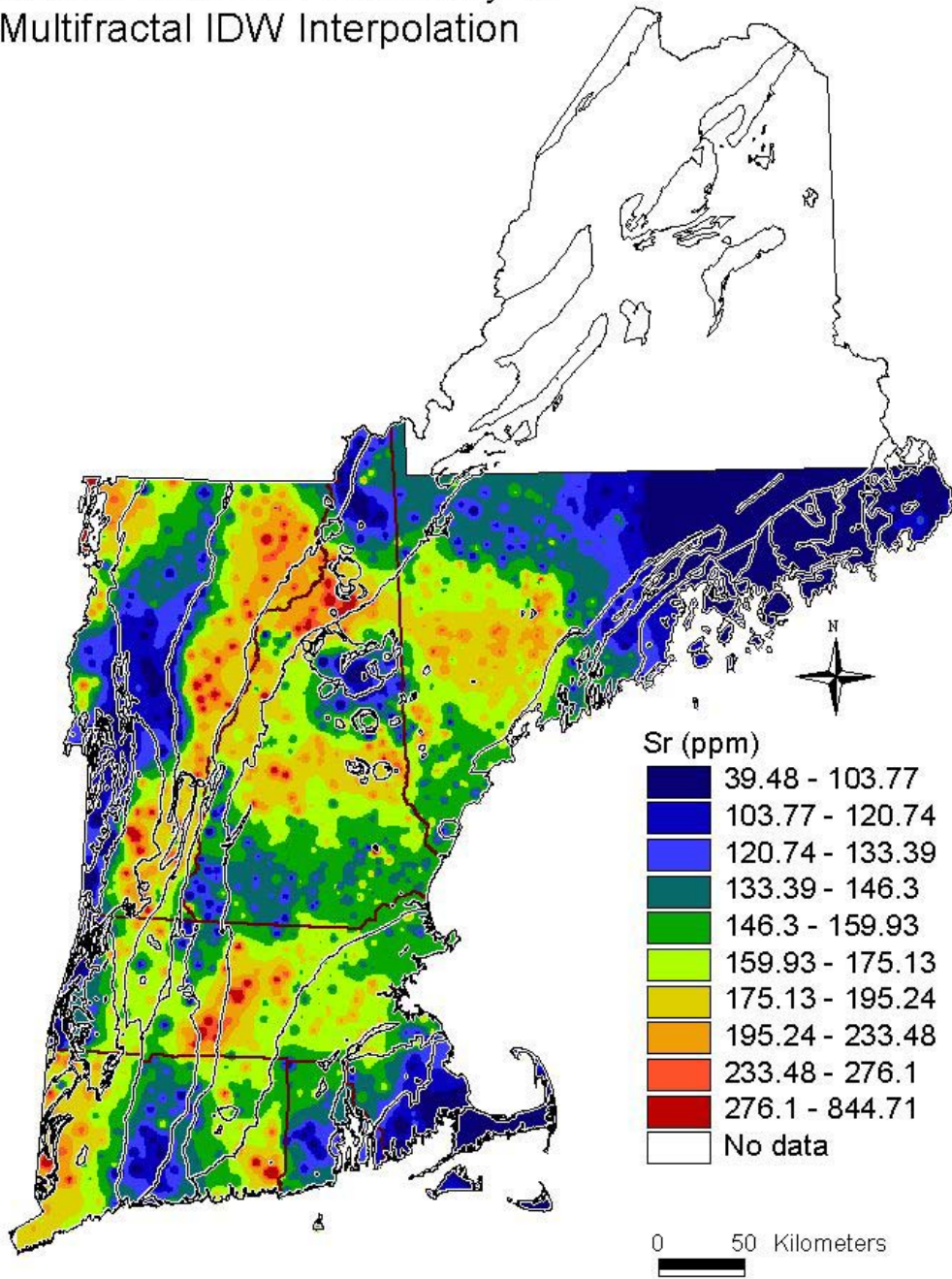




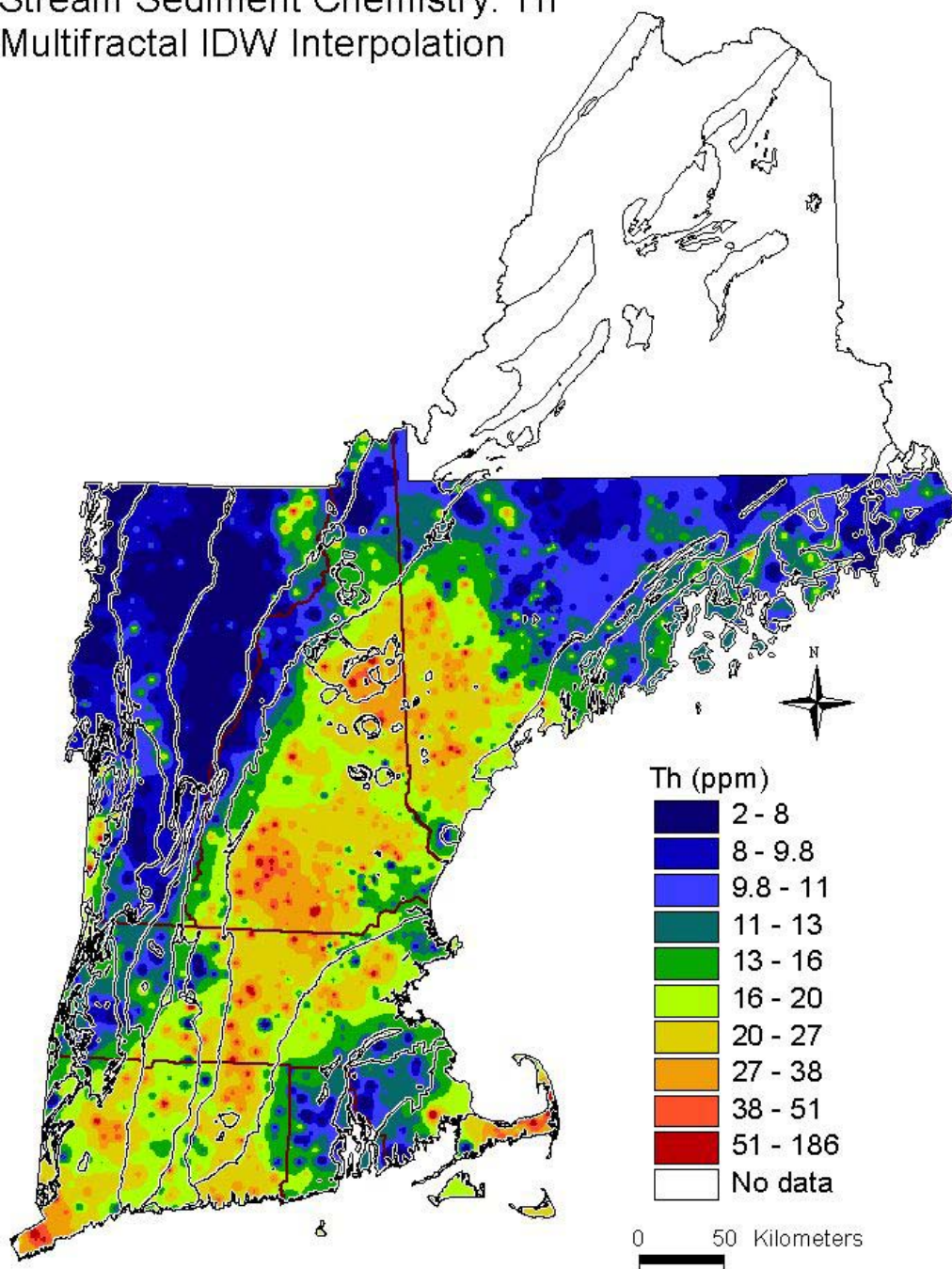
# Stream Sediment Chemistry: SiO<sub>2</sub> Multifractal IDW Interpolation



# Stream Sediment Chemistry: Sr Multifractal IDW Interpolation

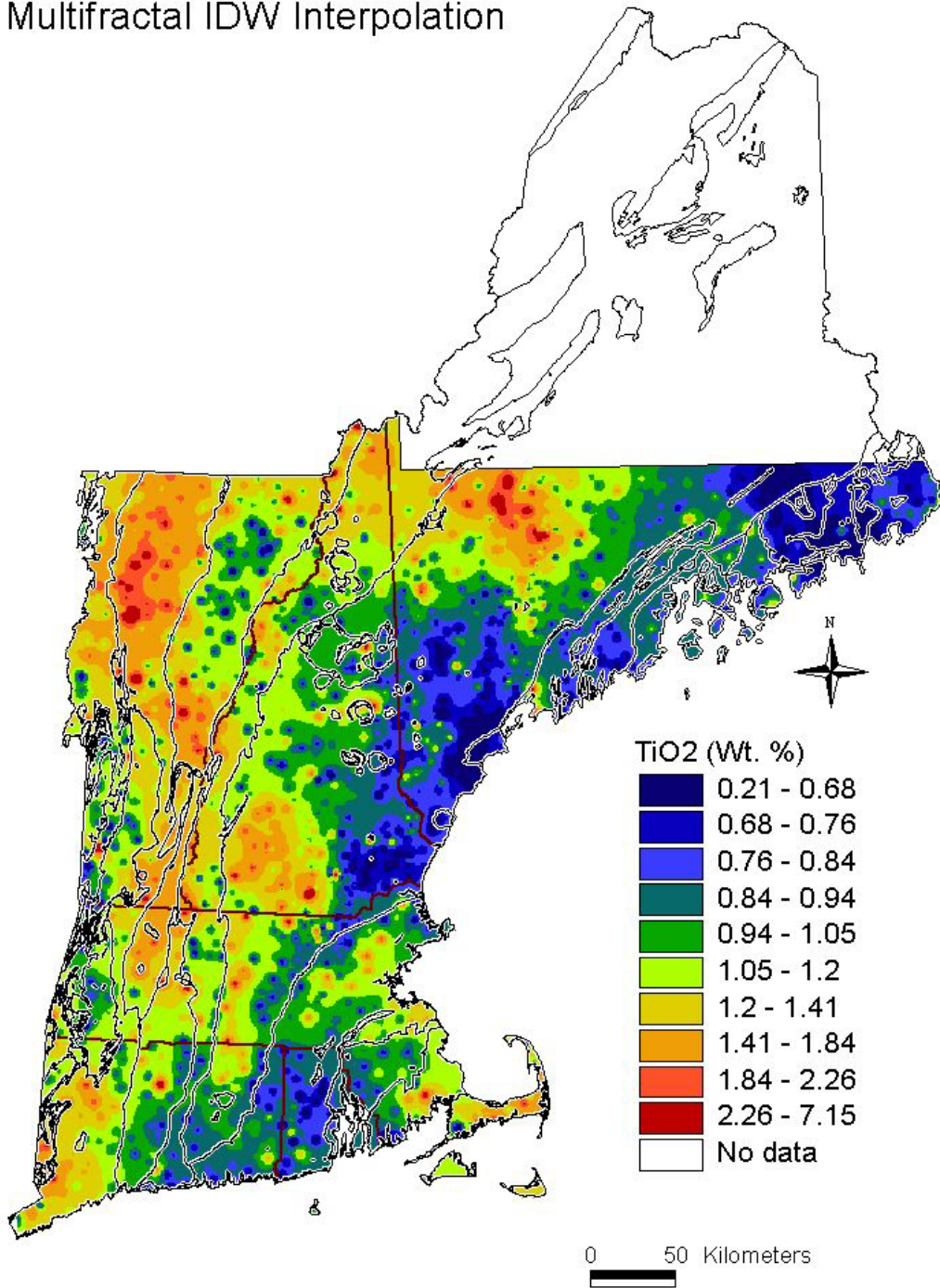


# Stream Sediment Chemistry: Th Multifractal IDW Interpolation

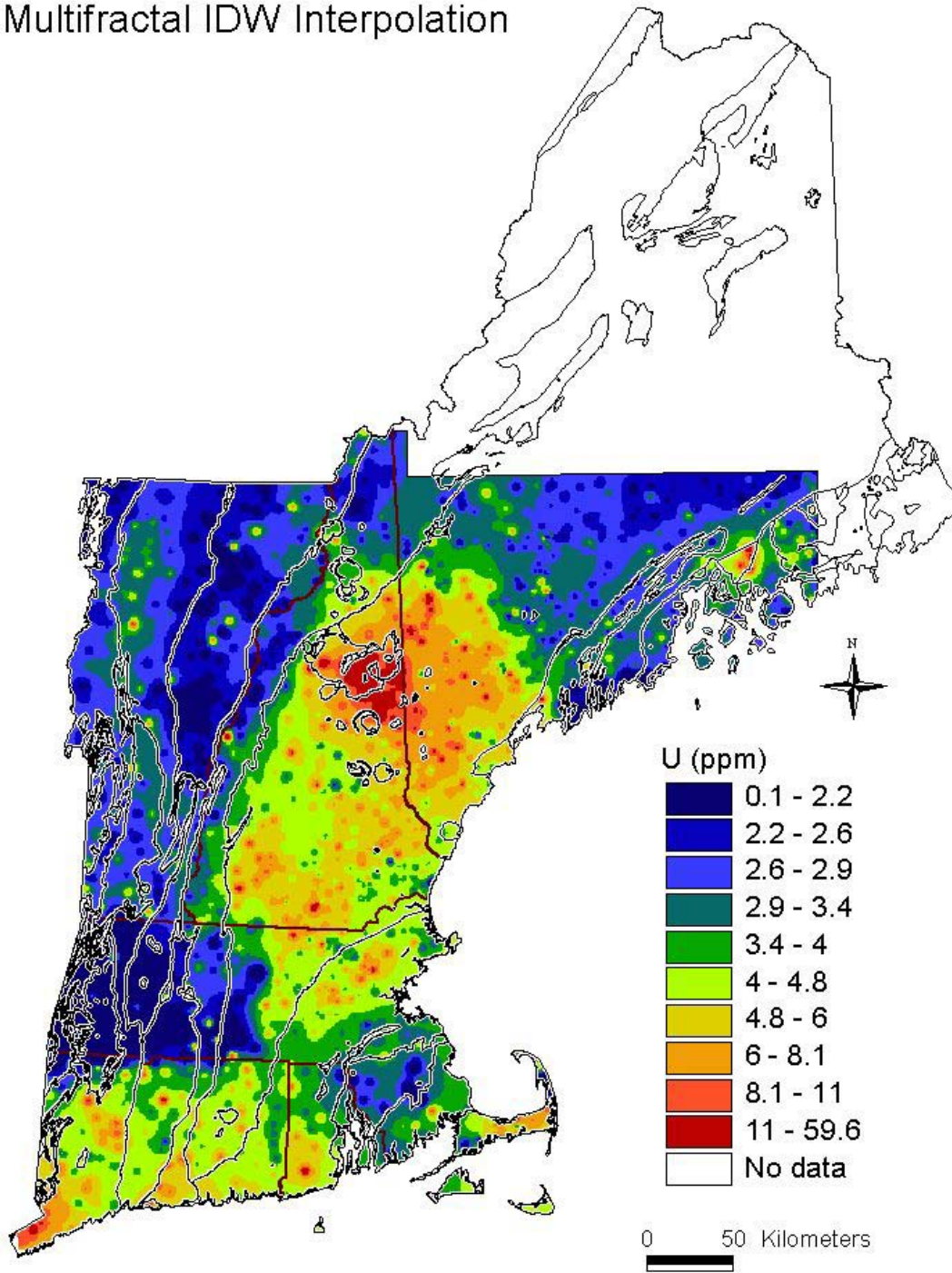




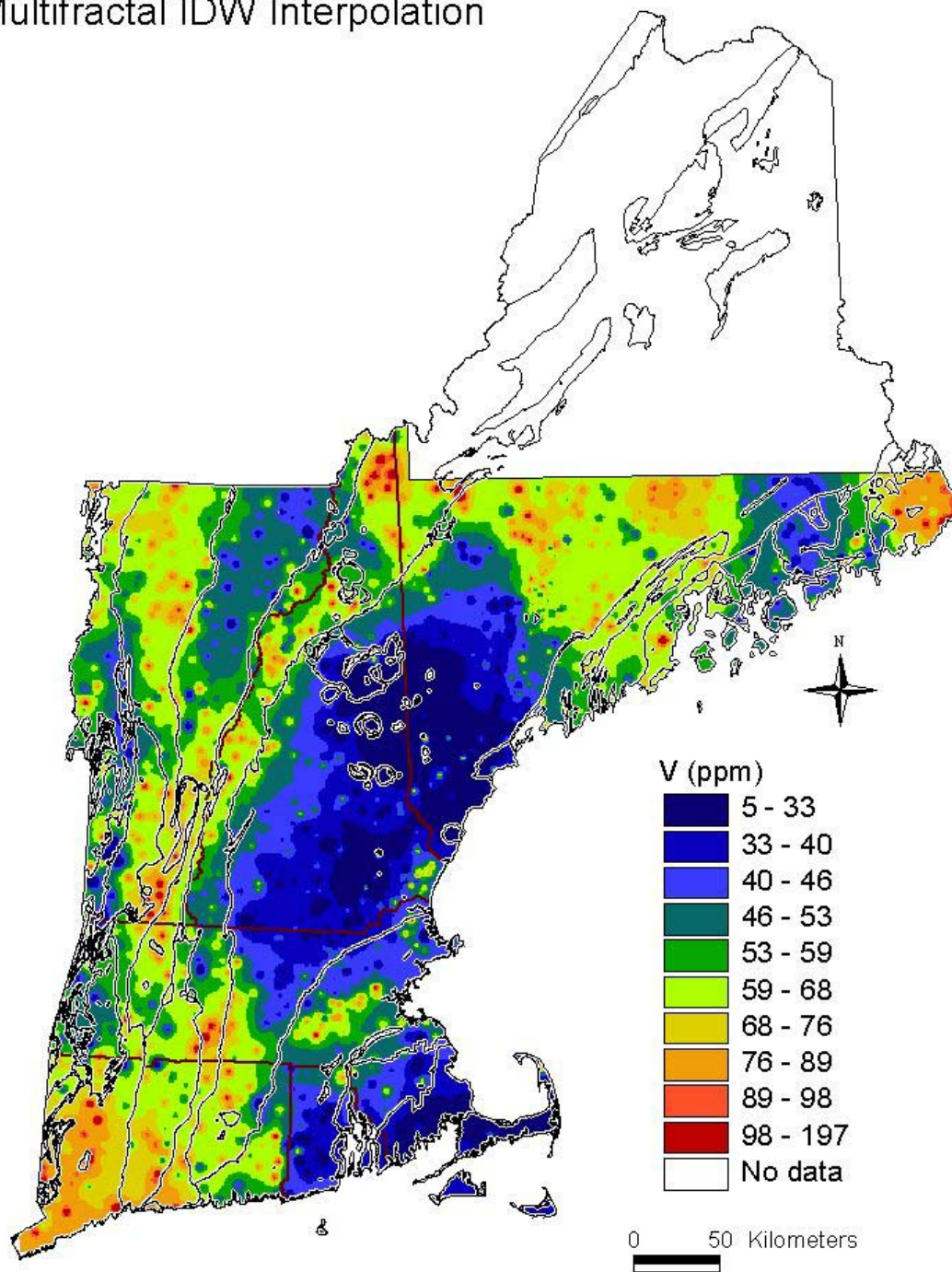
Stream Sediment Chemistry: TiO<sub>2</sub>  
Multifractal IDW Interpolation



# Stream Sediment Chemistry: U Multifractal IDW Interpolation

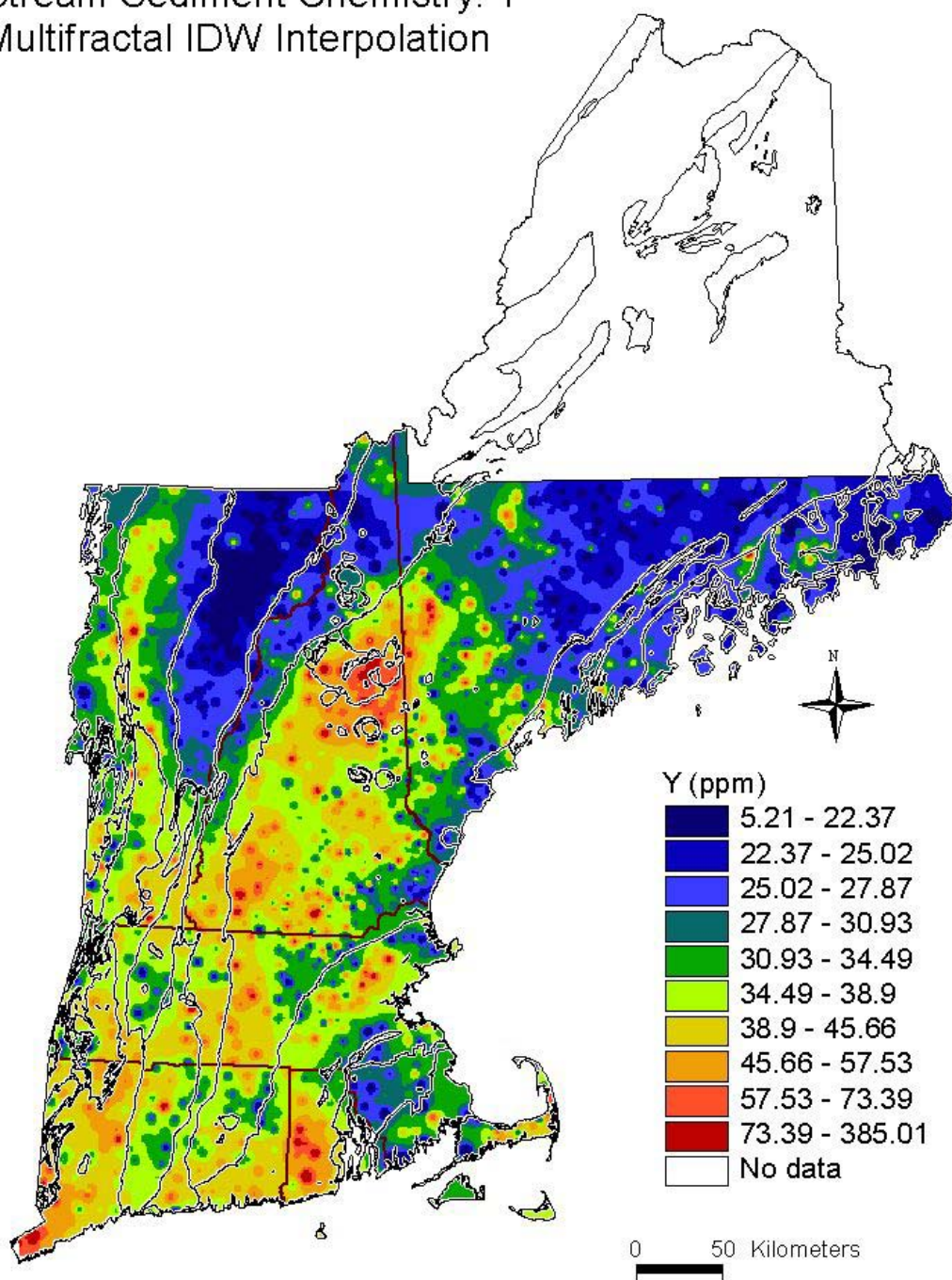


# Stream Sediment Chemistry: V Multifractal IDW Interpolation





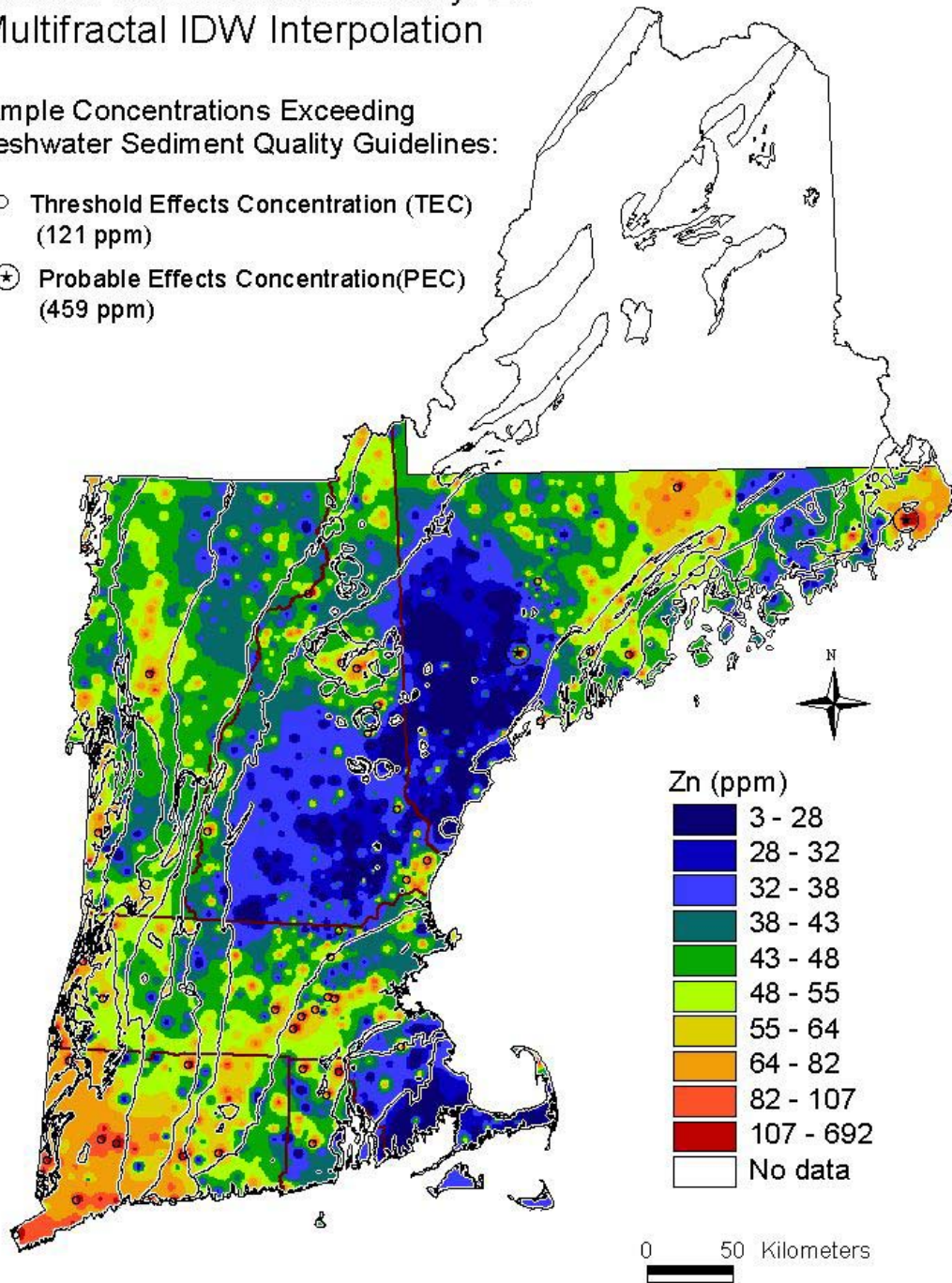
# Stream Sediment Chemistry: Y Multifractal IDW Interpolation



# Stream Sediment Chemistry: Zn Multifractal IDW Interpolation

Sample Concentrations Exceeding  
Freshwater Sediment Quality Guidelines:

- Threshold Effects Concentration (TEC)  
(121 ppm)
- ⊕ Probable Effects Concentration(PEC)  
(459 ppm)



# Stream Sediment Chemistry: Zr Multifractal IDW Interpolation

