

## **Cu, Hg, Pb, Zn Population Density**

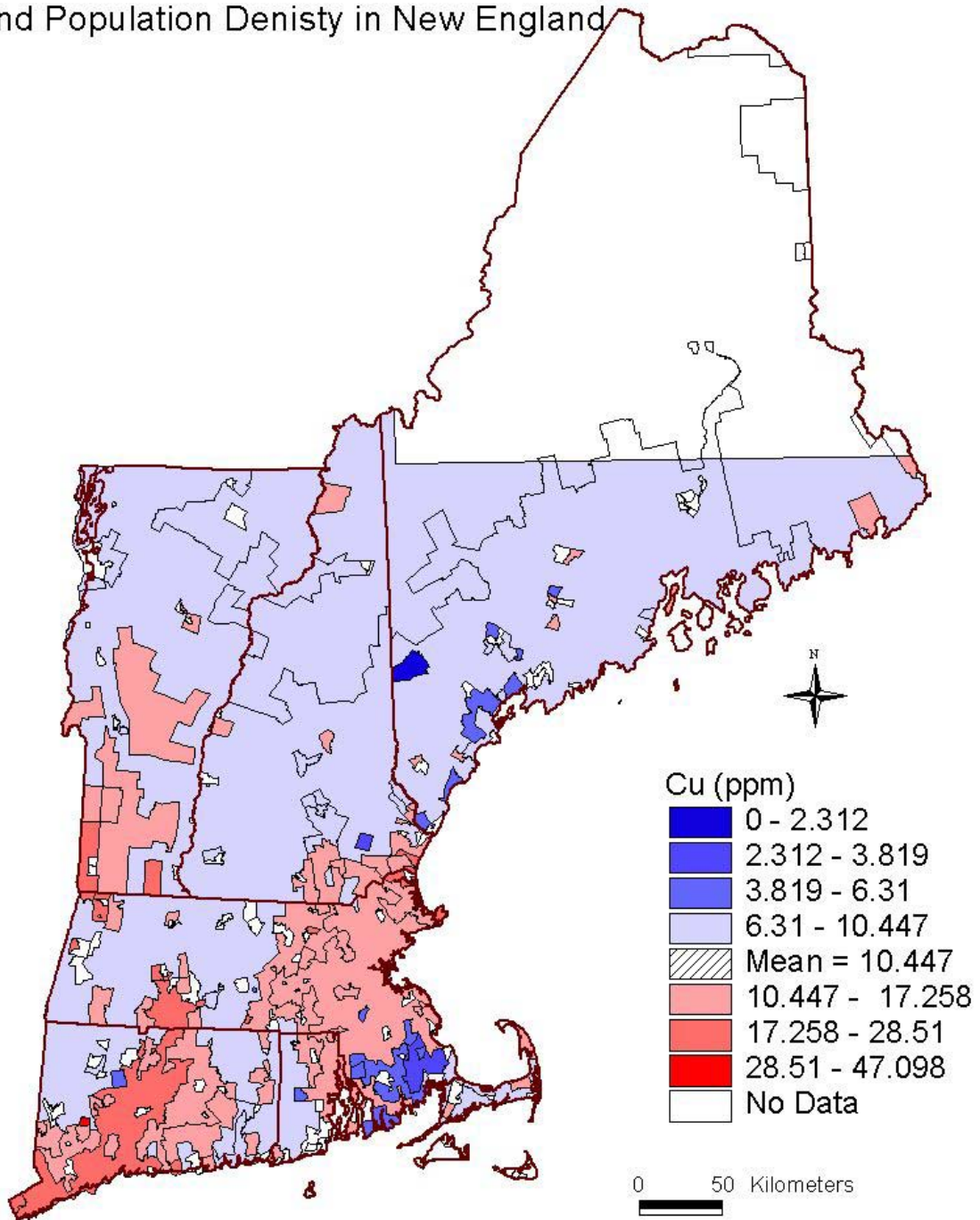
### **Median-Value Map Figures:**

for all elements (listed alphabetically Cu-Zn) are provided **(p.2-5)**.

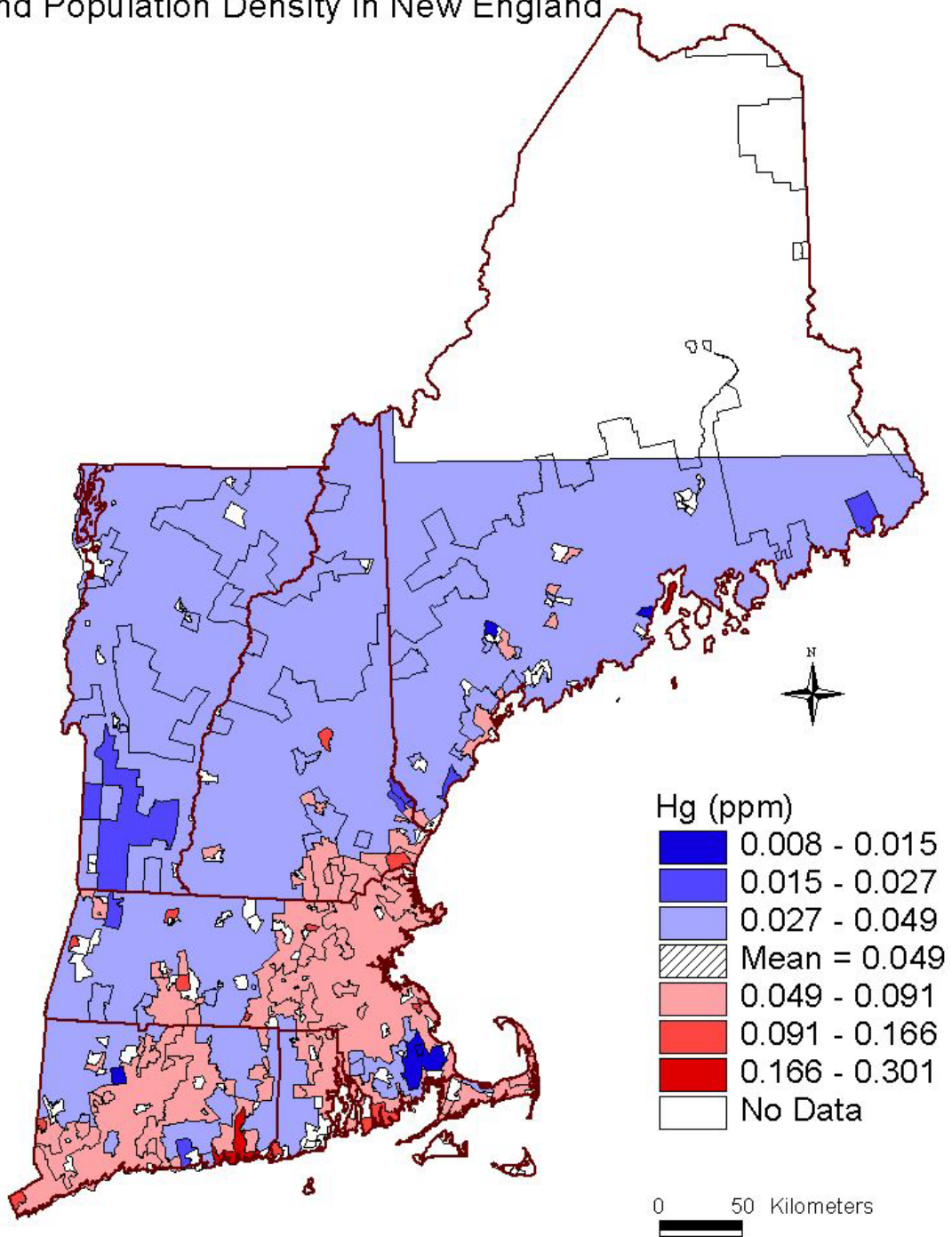
### **Box-plot Figures:**

for all elements (listed alphabetically Cu-Zn) are provided **(p.6-7)**.

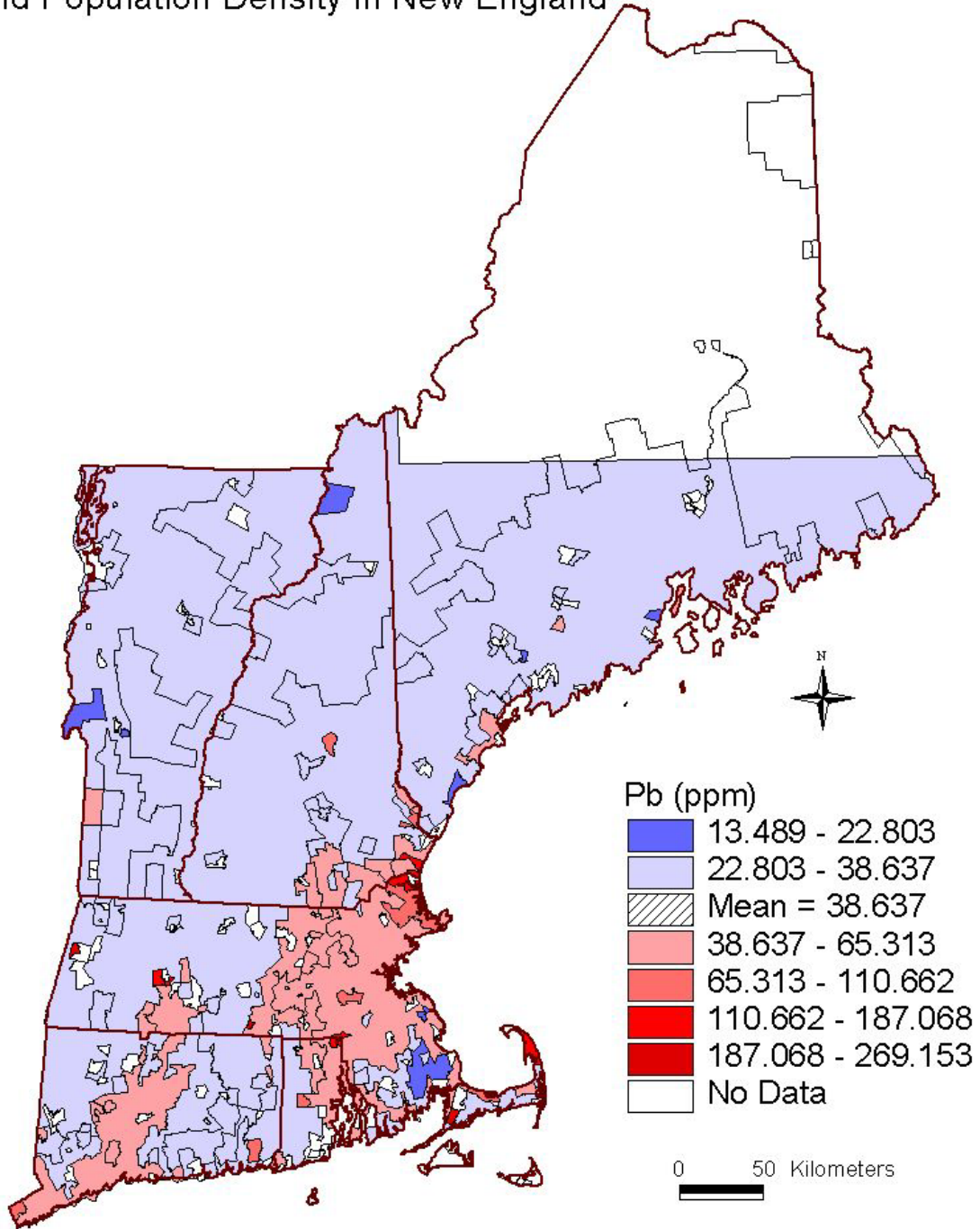
# Median Values of Stream Sediment Cu, and Population Denisty in New England



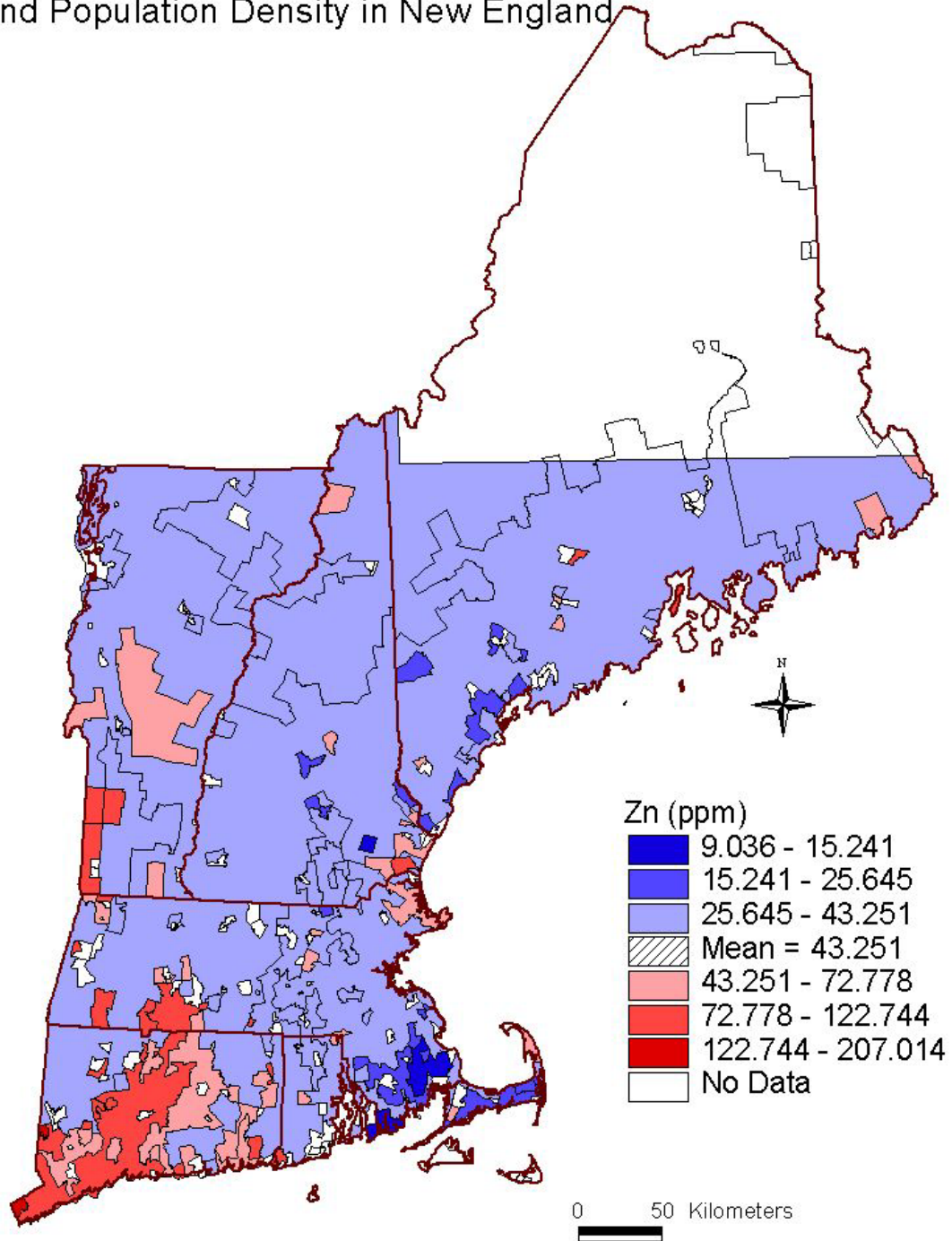
# Median Values of Stream Sediment Hg, and Population Density in New England



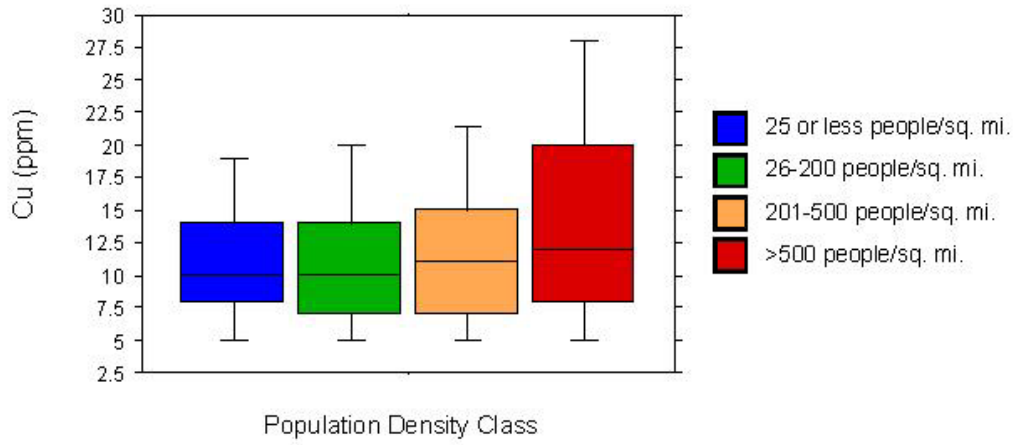
# Median Values of Stream Sediment Pb, and Population Density in New England



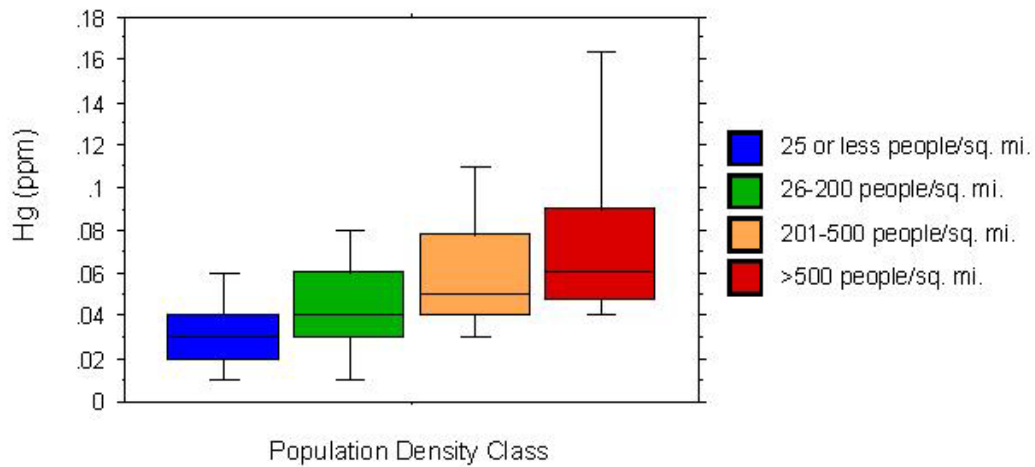
# Median Values of Stream Sediment Zn, and Population Density in New England



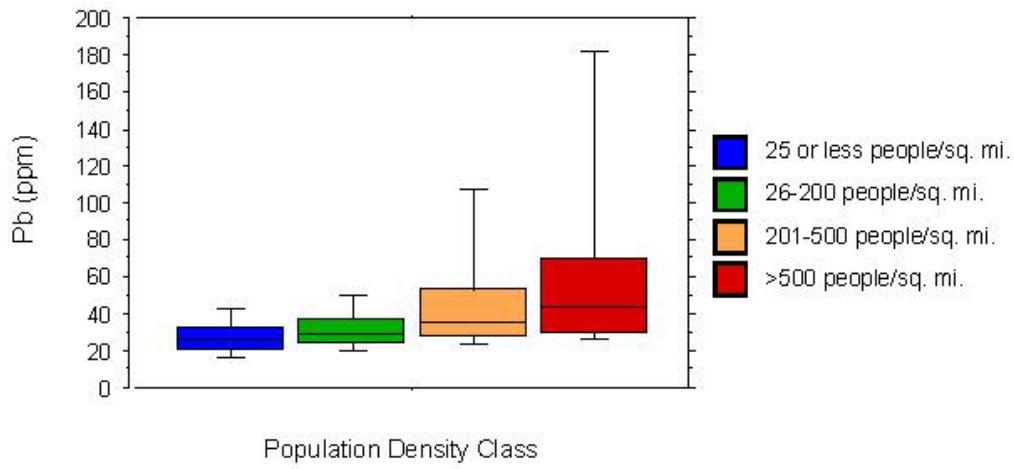
**Values of Cu, by Population Density in New England**



**Values of Hg, by Population Density in New England**



Values of Pb, by Population Density in New England



Values of Zn, by Population Density in New England

