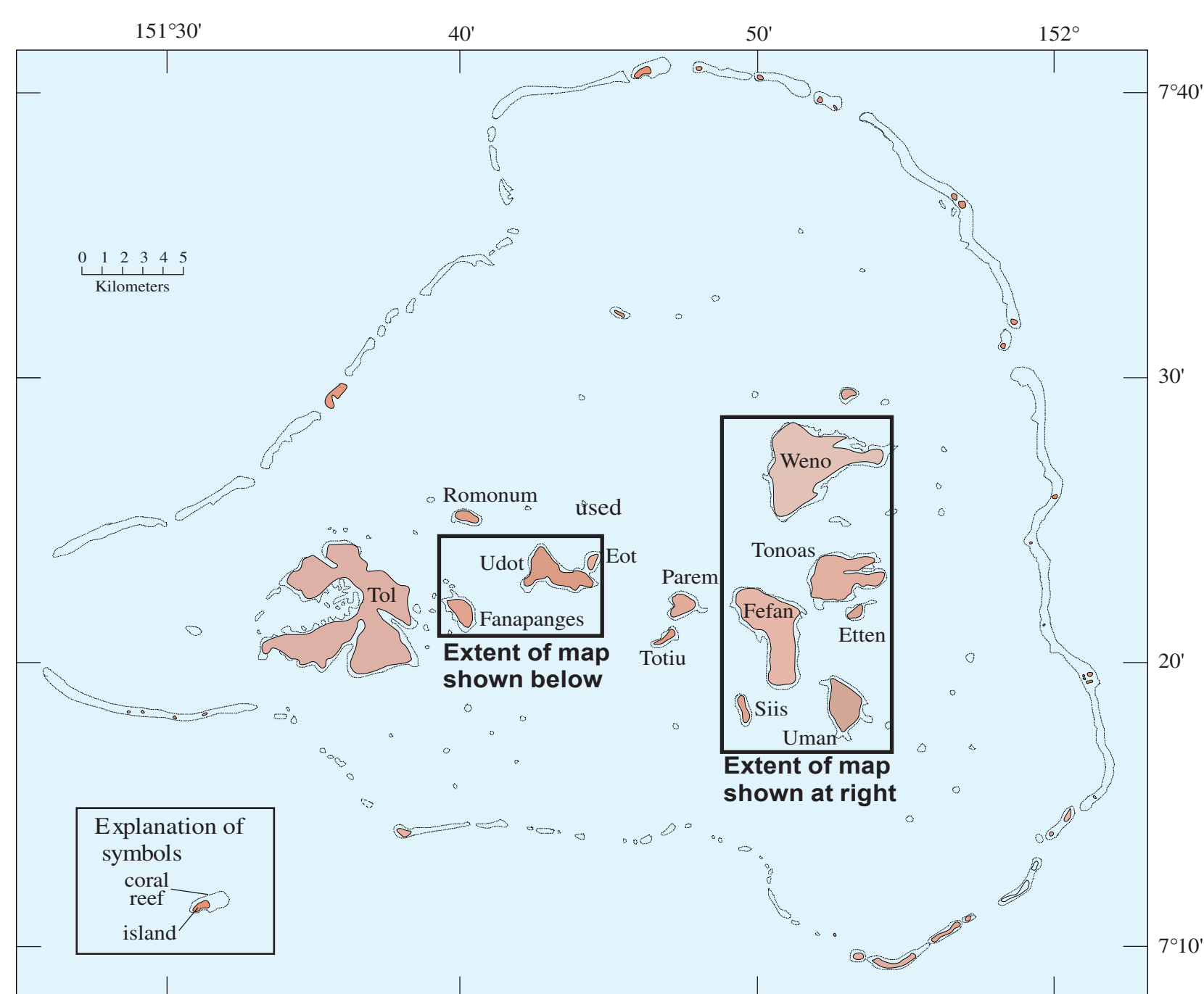


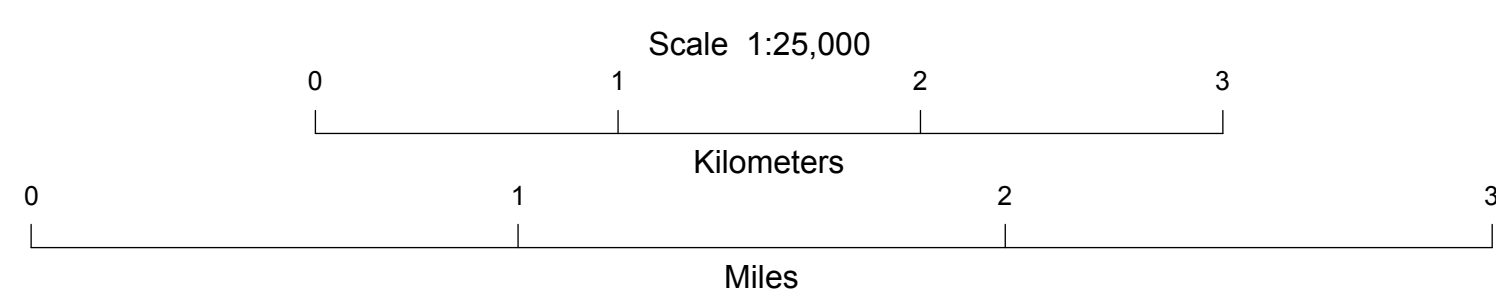
Debris-Flow Hazard Map of Chuuk Islands Affected By Typhoon Chata'an

By

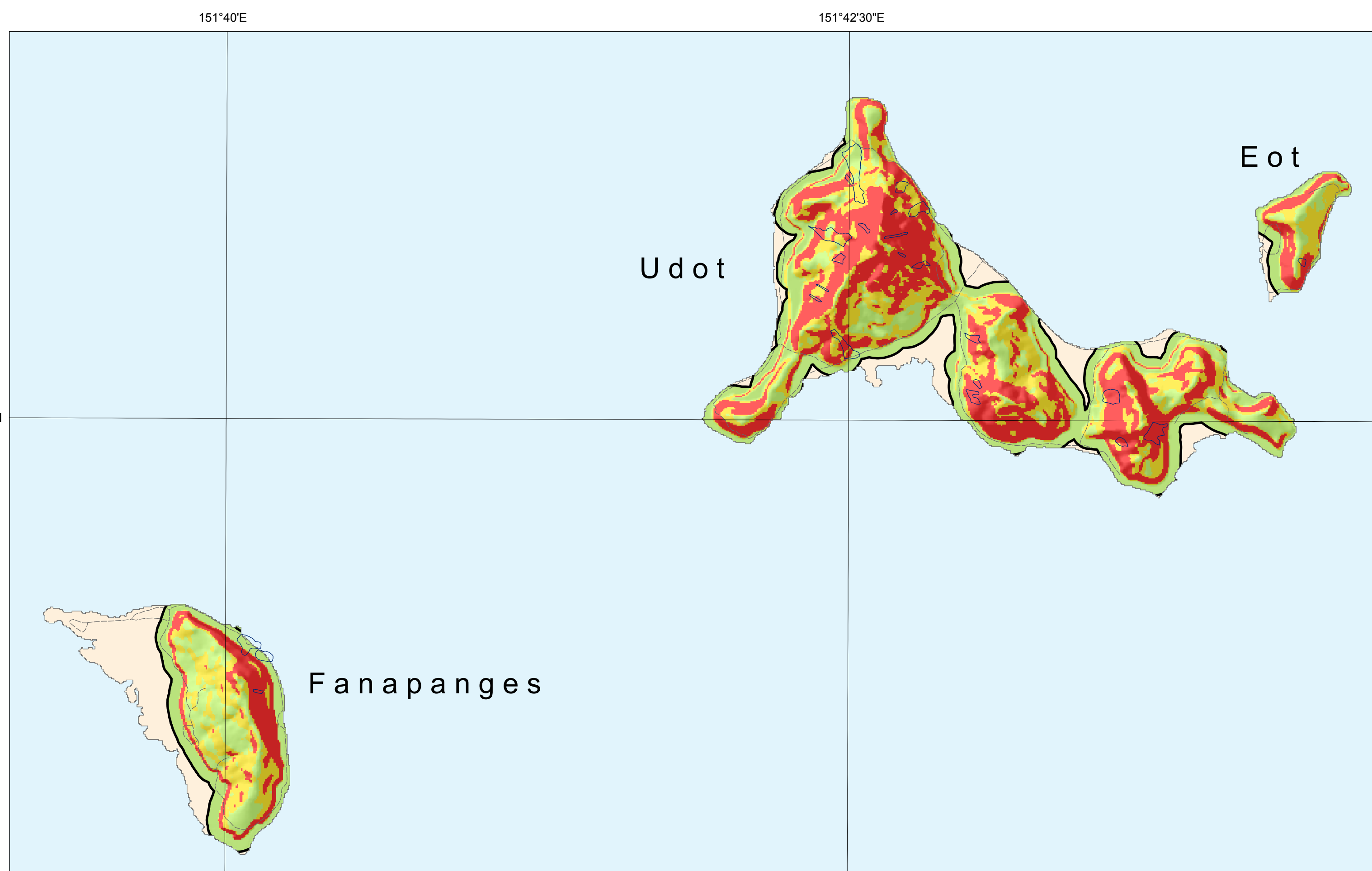
Edwin L. Harp, Mark E. Reid, and John A. Michael
 2004



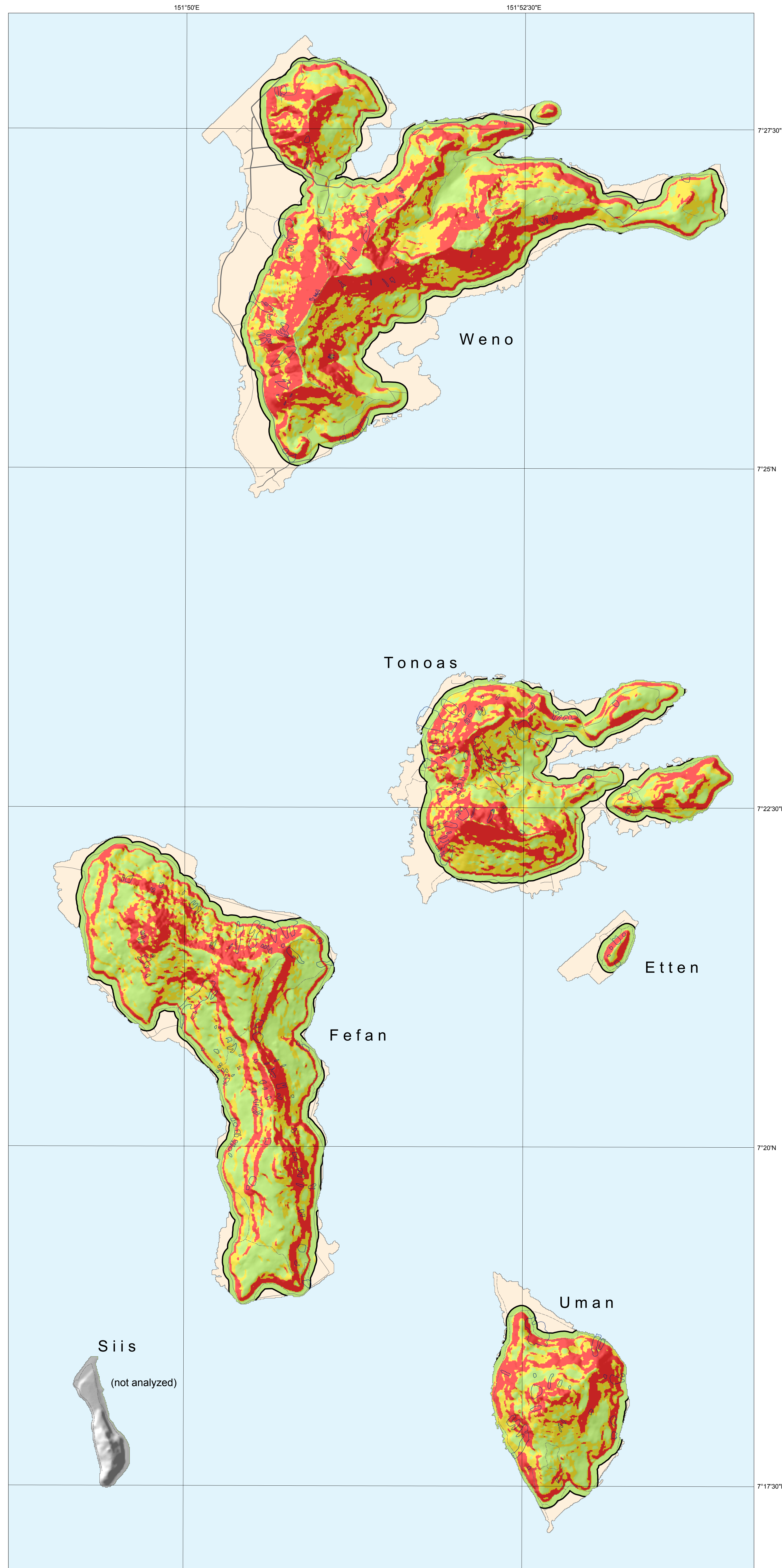
- EXPLANATION**
- Debris-Flow Hazard**
- High (2.0%)
 - Moderate (1.0%)
 - Low (0.1%)
- Area of low hazard coastward of 100 m setback from steep slopes
 - 100 m Setback
 - Landslides triggered by Tropical Storm Chata'an



Open-File Reports are used for the dissemination of information that must be released immediately to fill a public need or for information that is not sufficiently refined to warrant formal publication. As such, Open-File Reports should not be viewed as final reports of major scientific investigations. Because of their preliminary nature and possibility of being superseded, Open-File Reports do not introduce new or revised geologic, stratigraphic, hydrologic, or taxonomic nomenclature. In particular, Article 4(a) of the North American Stratigraphic Code excludes open-file releases for the naming or revising of formal geologic units.



Base data are from products created by the U.S. Geological Survey. The elevation data are from the 10-m Digital Elevation Model data and the roads are from Digital Line Graph data.



Base data are from products created by the U.S. Geological Survey. The elevation data are from the 10-m Digital Elevation Model data and the roads are from Digital Line Graph data.