

Arsenic

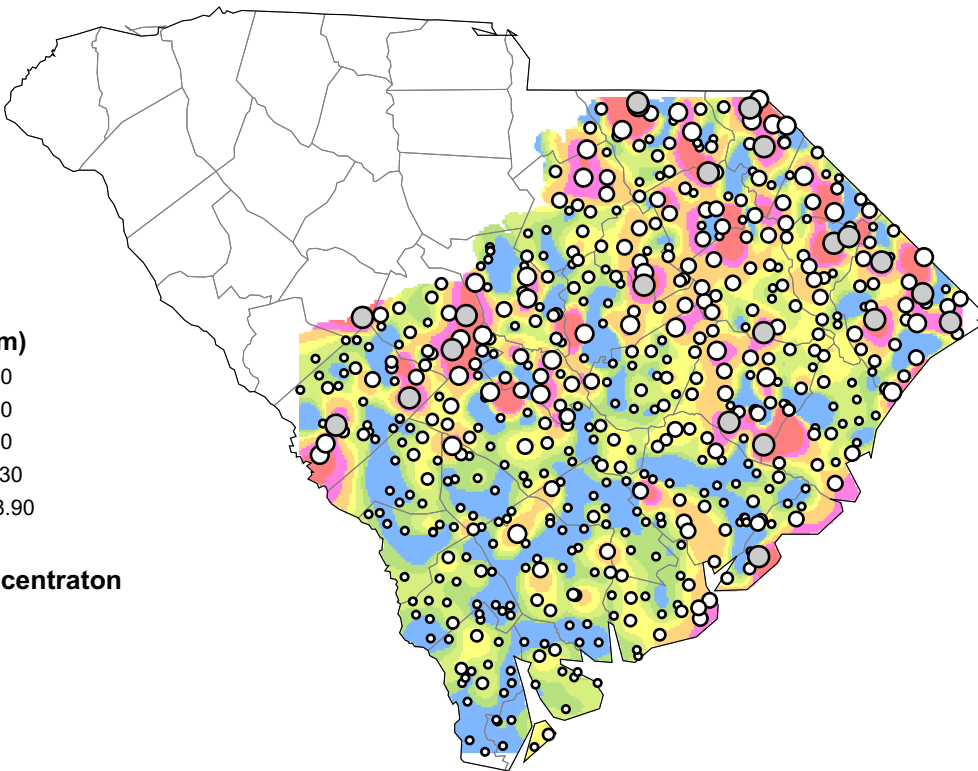
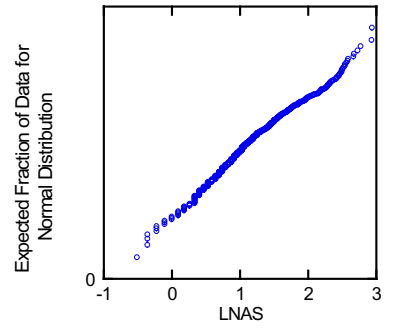
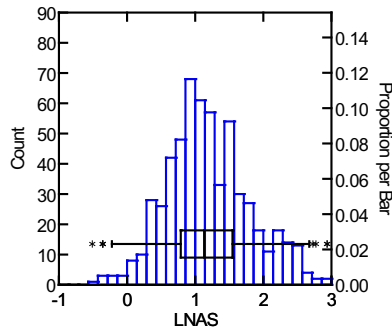
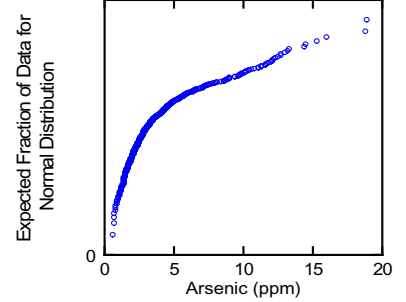
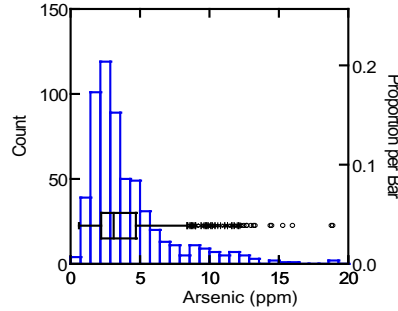
Detection minimum: 0.6 mg/kg
 Default value : 0.3 mg/kg

Soil Samples

Crustal abundance: 1.8 mg/kg
 Granite-granodiorite abundance: 3 mg/kg

As

	As	LNAs
N of cases	584	584
Minimum	0.600	-0.511
Maximum	18.900	2.939
Median	3.100	1.131
Mean	3.995	1.188
Standard Dev	2.838	0.612
Variance	8.055	0.374
Samples set to default value:	0	



Soil samples were only taken in the Atlantic Coastal Plain

Arsenic (ppm)

- 0.60 - 2.90
- 2.91 - 4.90
- 4.91 - 7.80
- 7.81 - 11.30
- 11.31 - 18.90

Arsenic concentraton

- Low
- High

1:3,380,000

0 25 50 100 Miles