

Figure 2.6a. Photograph of the sea floor on the crest of the ridge south of the new ocean outfall at a water depth of about 24 m (see Figure 2.5b for location). The pink on the boulders is calcareous algae. The sea floor at this location is devoid of any fine-grained sediments.



Figure 2.6b. Photograph of the sea floor to the west of the new ocean outfall at a water depth of about 29 m in an area of sandy sediments (see Figure 2.5b for location). In this picture, the sea floor is covered with sand dollars.

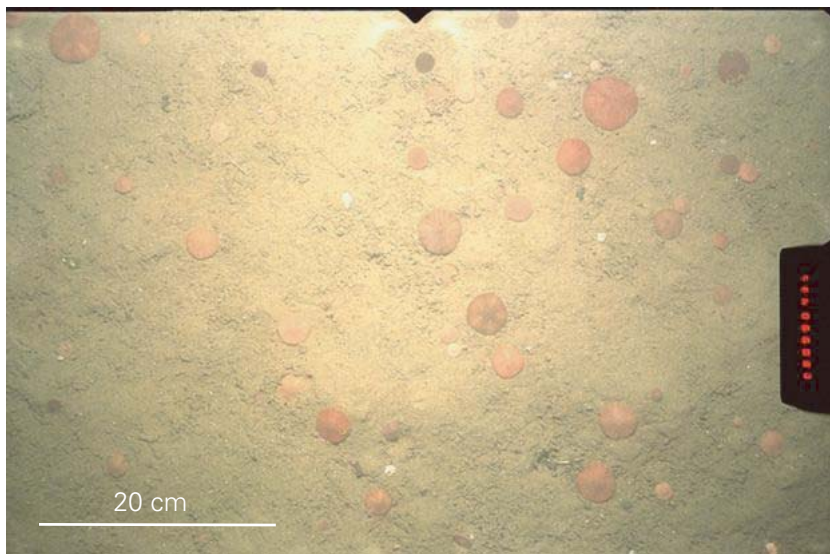


Figure 2.6c. Photograph of the sea floor to the west of the new ocean outfall at a water depth of about 33 m in an area of muddy sediments (see Figure 2.5b for location). A cancer crab is burrowing in the sediment. This is the location of long-term sediment sampling (see Section 7).

