

GEORGETOWN QUADRANGLE

Excerpted from: Surficial Geologic Map of the Salem Depot-Newburyport East-Wilmington-Rockport 16-Quadrangle Area in Northeast Massachusetts
By Byron D. Stone, Janet Radway Stone, and Mary L. DiGiacomo-Cohen
Open-File Report 2006-1260B

Explanatory pamphlet accompanies map

71°00'W

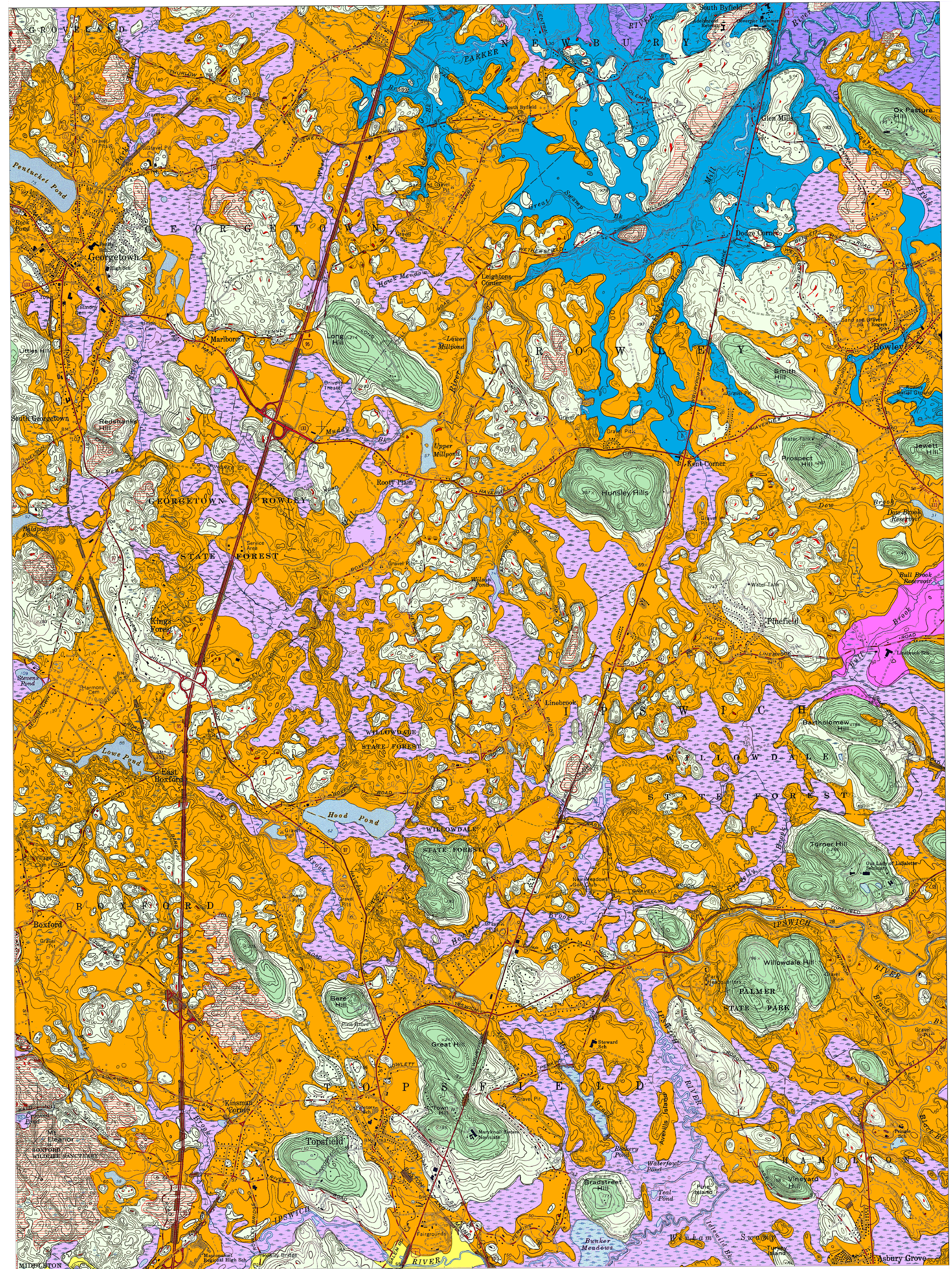
70°52'30"W

42°45'0"N

42°45'0"N

42°37'30"N

42°37'30"N



Scale 1:24,000

