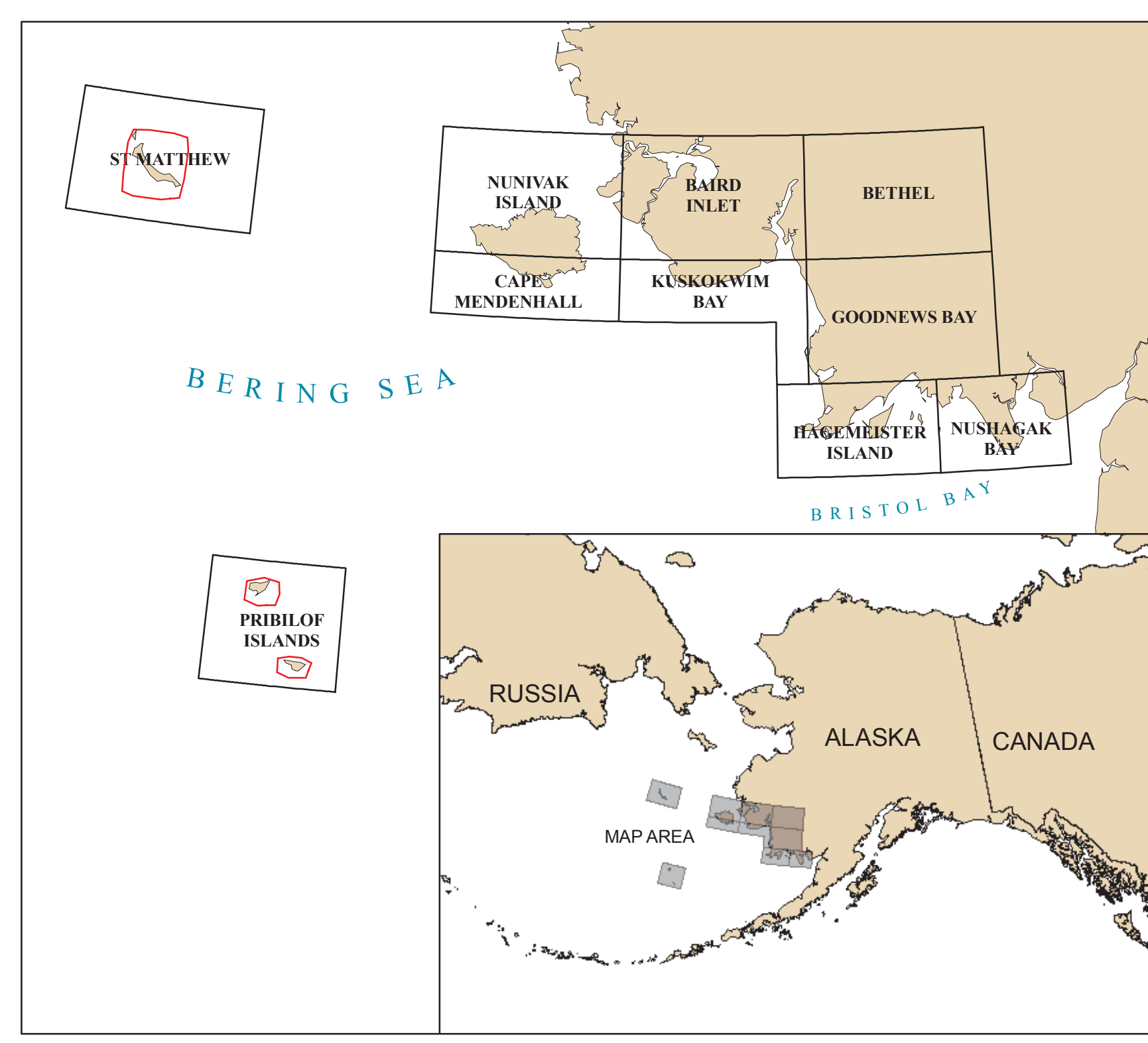
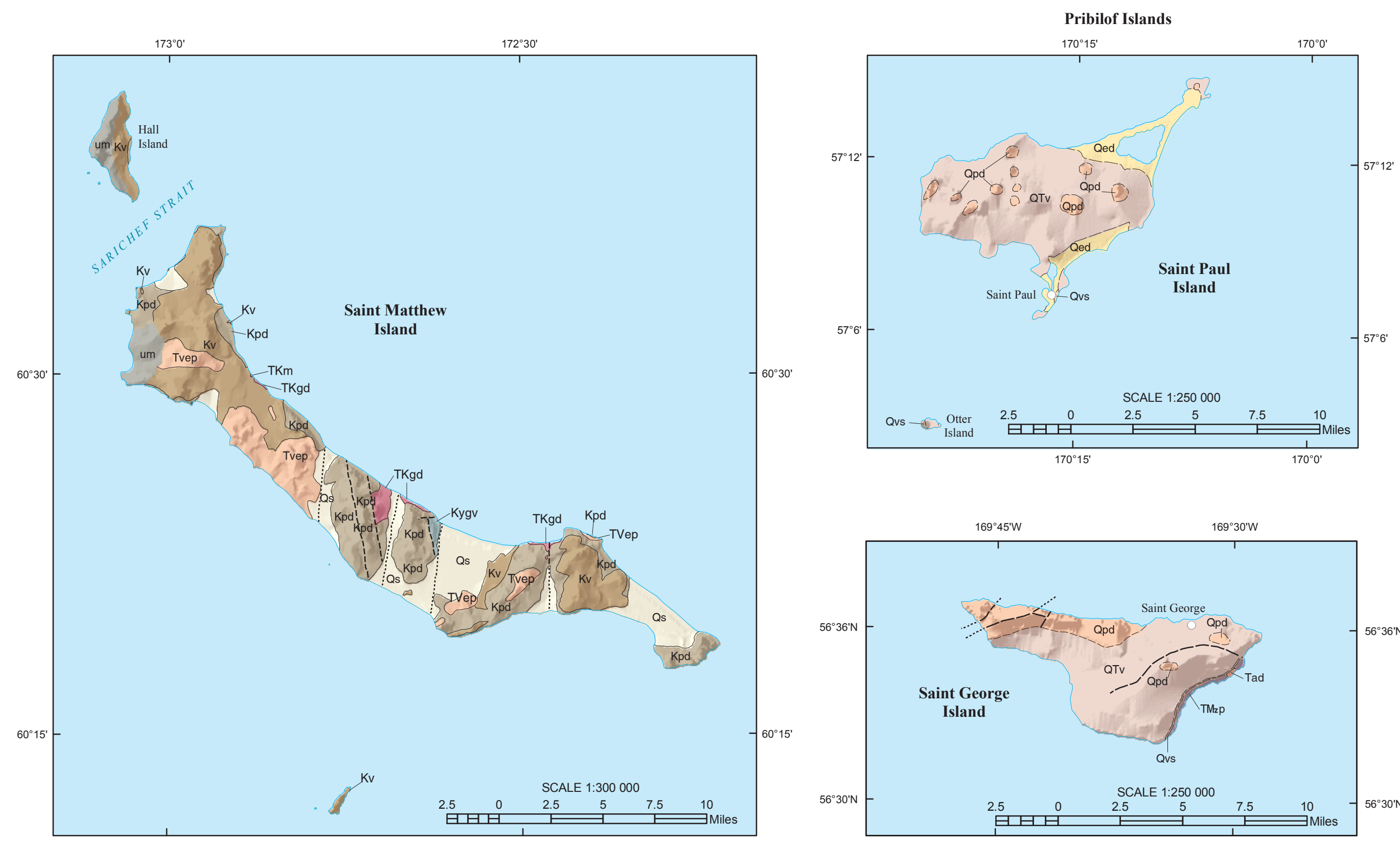
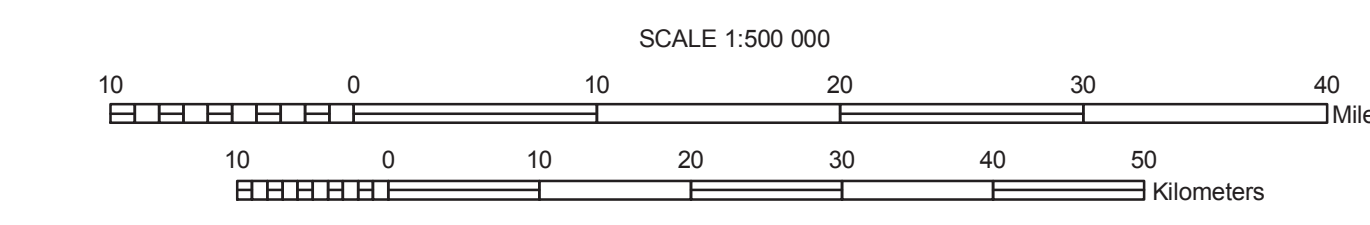
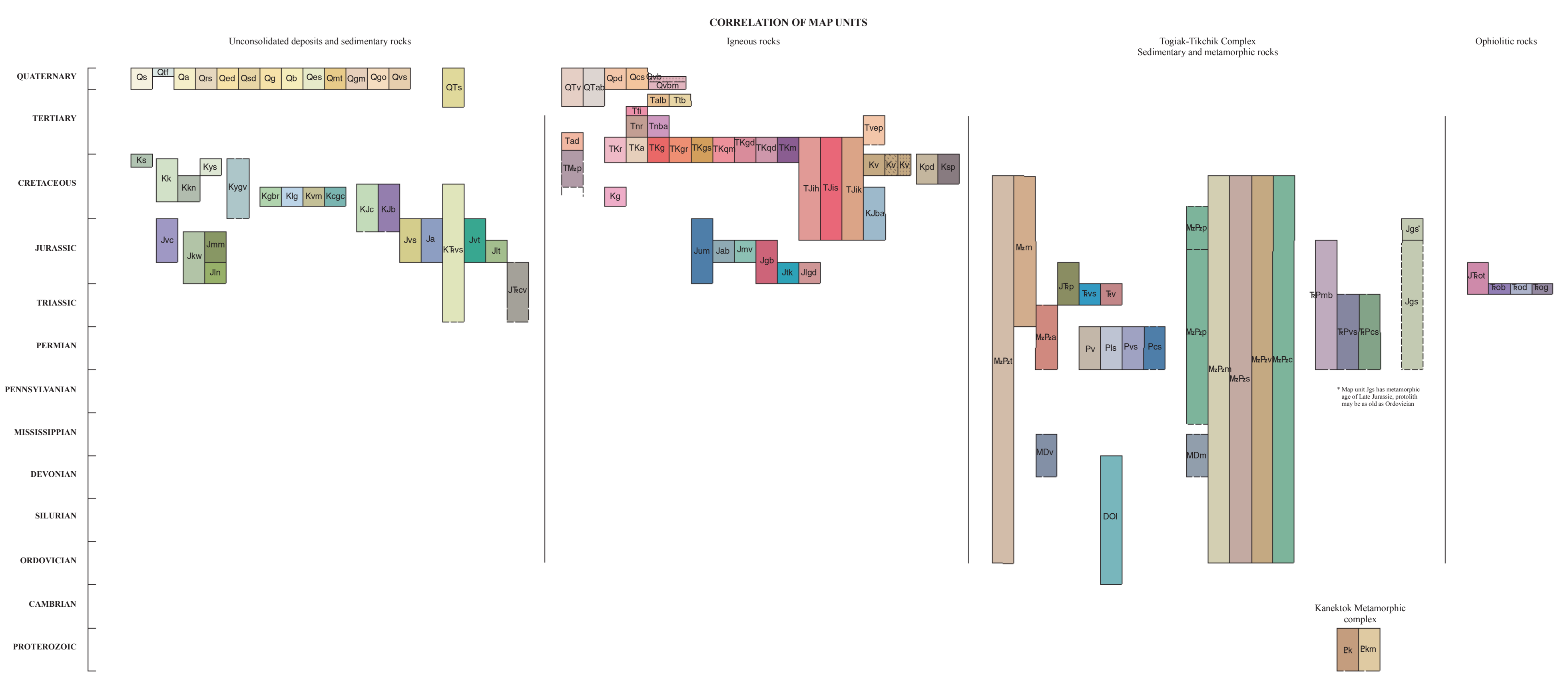


SOURCES OF INFORMATION
See References section for complete bibliographic information of published sources.
BETHEL QUADRANGLE
1:250,000 scale
Box, S.E., Moll-Stuber, E.J., Frost, T.P., and Murphy, J.M., 1993
Hore, J.M., and Conrad, W.L., 1979
Hore, J.M., and Conrad, W.L., 1978
Wilson, F.H., 1977
Wilson, F.H. and Huls, C.P., 2006, Unpublished data
BAIRD INLET QUADRANGLE
1:500,000 scale
Conrad, W.L., 1957
1:250,000 scale
Wilson, F.H. and Huls, C.P., 2006, Unpublished data
CAPE MENDENHALL QUADRANGLE
1:250,000 scale
Hore, J.M., Condon, W.H., Cox, A., and Dalrymple, G.B., 1968
GOODNEWS BAY QUADRANGLE
1:250,000 scale
Box, S.E., 1985a
Hore, J.M., and Conrad, W.L., 1961b
Hore, J.M., and Conrad, W.L., 1978
Wilson, F.H., 1977
Wilson, F.H. and Huls, C.P., 2006, Unpublished data
HORE J.M., and Conrad, W.L., field maps circa 1975
HAGEMESTER ISLAND QUADRANGLE
1:250,000 scale
Box, S.E., 1985a
Hore, J.M., and Conrad, W.L., 1961a
Hore, J.M., and Conrad, W.L., 1978
Wilson, F.H. and Huls, C.P., 2006, Unpublished data
KUSKOKWIM BAY QUADRANGLE
1:500,000 scale
Conrad, W.L., 1957
1:250,000 scale
Wilson, F.H. and Huls, C.P., 2006, Unpublished data
NUSHAGAK BAY QUADRANGLE
1:250,000 scale
Box, S.E., 1985a
Hore, J.M., and Conrad, W.L., 1978
Wilson, F.H. and Huls, C.P., 2006, Unpublished data
1:63,500 scale
Hore, J.M., and Conrad, W.L., field maps circa 1975
NUNIVAK ISLAND QUADRANGLE
1:500,000 scale
Conrad, W.L., 1957
1:250,000 scale
Hore, J.M., Condon, W.H., Cox, Allan, and Dalrymple, G.B., 1968
PRIBILOF ISLANDS QUADRANGLE
1:63,500 scale
Burb, T.J.W., 1956
SAINT MATTHEW ISLAND QUADRANGLE
1:250,000 scale
Paton, W.W., Jr., Miller, T.P., Beck, H.C., Gray, George, Hore, J.M., and Ovenshine, A.T., 1975



Hydrologic base information derived from U.S. Geological Survey 1:63,500 scale G.T.S. Contour interval derived from USGS 2 arc second NED files, Alaska Albers Equal Area projection.



- LIST OF MAP UNITS
UNCONSOLIDATED DEPOSITS
Qs Surficial deposits, undivided
Qf Tidal flat and active estuarine deposits
Qa Alluvial deposits
Qm Remotely-sited
Qb Beach deposits
Qes Estuarine deposits
Qmt Marine terraces
Qed Eolian deposits
Qsd Silt deposits
Qg Glacial moraine
Qgm Glacial moraine
Qgo Outwash deposits
Qov Volcanic sediment
Qta Semiconsolidated marine beach deposits
SEDIMENTARY ROCKS
Ks Summit Island Formation
Kk Kuskokwim Group
Kkn Kuskokwim Group, northshore facies
Kyn Sandstone, shale, and conglomerate debris deposits
Kyyv Volcanic graywacke and argillite
Kgyv Graywacke of Karon Lake
Kgl Lamy grit and limestone of the Uvaggiukhik belt of Hore and Conrad (1983)
Ksm Volcanic and sedimentary rocks of the Mount Oratia belt of Hore and Conrad (1983)
Ksgz Calcareous graywacke and siltstone of the Esk Mountains belt of Hore and Conrad (1983)
Kkvt Nukluk Volcanic Field, basalt and andesite
Kkvb Rhyolite and dacite tuff
Kkvi Peridotite on St. George Island
Kkvs Marine volcaniclastic sandstone, conglomerate, and argillite
Kkvt Marine volcaniclastic sandstone and argillite
Kkvs Hagemeister Island and southern Goodnews Bay quadrangles:
Kkvt Volcaniclastic turbidites of Toigak Bay of Box (1985a)
Kkvi Laminated tuff and associated rocks of Box (1985a)
Kkvs Coarse volcaniclastic rocks
Kkvt Volcaniclastic conglomerate, sandstone, and shale
Kkvi Graywacke of Kalkak Bay of Hore and Conrad (1978)
Kkvt Turbidites of Metevik Bay of Box (1985a)
Kkvi Dismembered volcaniclastic turbidites
Kkvs Volcanic rocks
Kkvt Pyroclastic rocks
Kkvi Basalt flows, undivided
Kkvt Basalt flows, Matuyama polarity epoch
Kkvi Alkalic basalt of Karon Lake
Kkvt Older alkalic basalt of Karon Lake
Kkvt Tholeiitic basalt of Blauksik Bluff
Kkvi Alkalic basalt of Ahroviyuk Bluff
Kkvi Felsic intrusive rocks
Kkvt Aplitic on St. George Island
Kkvt Nukluk Volcanic Field, rhyolite
Kkvt Hagemeister pluton of Box (1985a)
Toigak-Tikchik Complex, undivided
Mdn Malmage
Mdnv Argillaceous melange
Mdnv Phyllite and chert
Mdnv Volcanic and sedimentary rocks
Mdnv Basalt and chert
Mdnv Volcanic rocks
Mdnv Limestone
Mdnv Volcaniclastic sedimentary rocks
Mdnv Clastic rocks
Mdnv Greenstone and schist
Mdnv Thin-bedded limestone
Mdnv Chertic phyllite
Mdnv Marble and metabasaltic dikes
Mdnv Meta-chert and phyllitic meta-chert
Mdnv Actinic sandstone and slate
Mdnv Volcaniclastic sandstone and argillite
Mdnv Chert and argillite
Mdnv Metabasaltic schist
Mdnv Volcaniclastic glaucophane-basalt-andesite schist
Mdnv Calcareous schist
Mdnv Green amphibole-bearing schist
Trough-jointite
Pillow basalt
Diabase intrusive rocks
Pyroxene gabbro
Kuskokwim metamorphic complex, undivided
Marble
Unmapped
Contact alteration
Town

RECONNAISSANCE GEOLOGIC MAP FOR THE KUSKOKWIM BAY REGION OF SOUTHWEST ALASKA
Compiled by
Frederic H. Wilson, Chad P. Huls, Solmaz Mohadjer, and Warren L. Conrad
2007