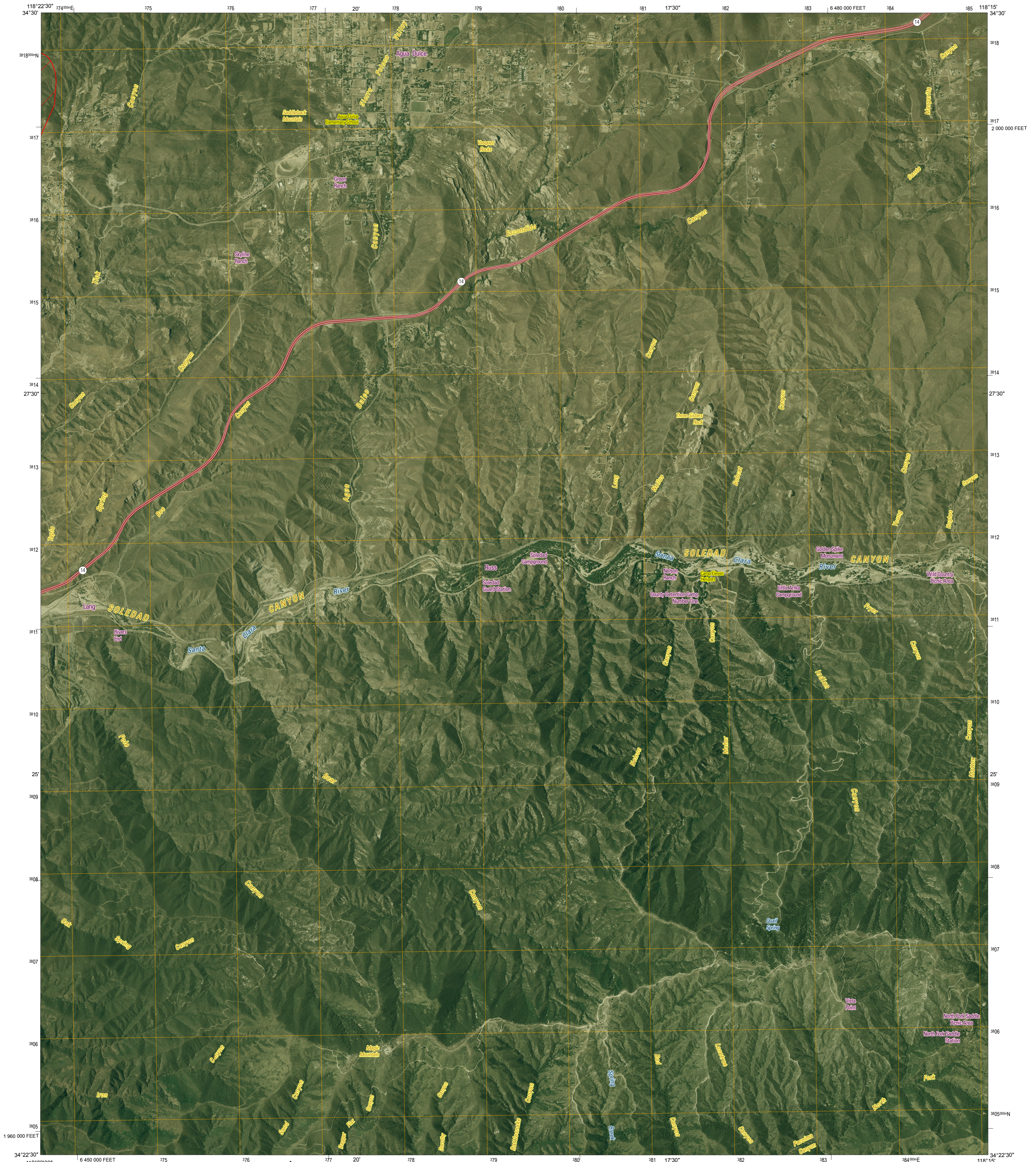




U.S. DEPARTMENT OF THE INTERIOR
U.S. GEOLOGICAL SURVEY

OPEN-FILE REPORT 2008-1029
VERSION 1.0



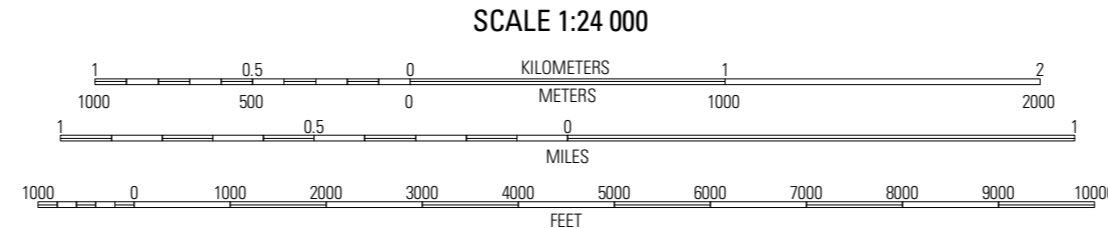
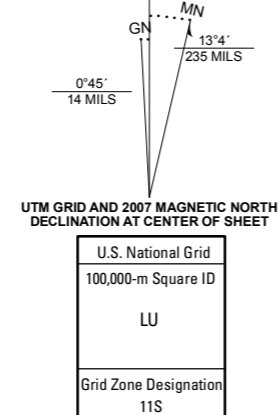
Produced by the United States Geological Survey
 North American Datum of 1983 (NAD83). Projection and 1 000-meter Universal Transverse Mercator grid, zone 11S
 10 000-foot grid ticks: California Coordinate System of 1983 (zone 5)

Imagery: Digital Orthophoto Quadrangle, USGS, 2005
 Transportation: Tele Atlas, 2007
 Names: Geographic Names Information System, 2006
 Fire Perimeter Data: GeoMAC, October 24, 2007

Buckweed Fire perimeter data were acquired as the best available data
 These data may not meet National Map Accuracy Standards

Road centerlines, road classification, route numbers, and street names © Tele Atlas 2007

Any use of trade, product, or firm names is for descriptive purposes only
 and does not imply endorsement by the U.S. Government



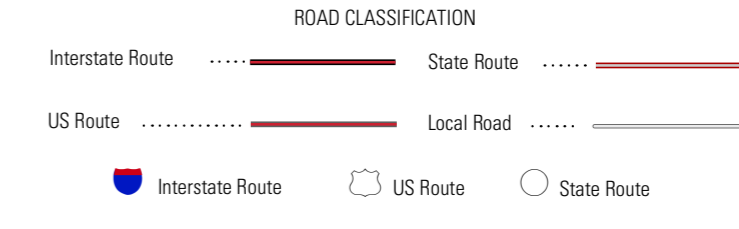
THIS MAP COMPLIES WITH NATIONAL MAP ACCURACY STANDARDS
 THIS IS A PRELIMINARY PRODUCT TO SUPPORT AGENCIES RESPONDING TO CALIFORNIA WILDFIRES
 THIS PRODUCT IS RELEASED ON CONDITION THAT NEITHER THE USGS NOR THE UNITED STATES GOVERNMENT
 BE HELD LIABLE FOR ANY DAMAGES RESULTING FROM ITS AUTHORIZED OR UNAUTHORIZED USE



CALIFORNIA QUADRANGLE LOCATION

1	2	3
4	5	
6	7	8

ADJOINING 7.5 QUADRANGLES



AGUA DULCE, CA
2007

PRELIMINARY IMAGE MAP OF THE 2007 BUCKWEED FIRE PERIMETER, AGUA DULCE QUADRANGLE, LOS ANGELES COUNTY, CALIFORNIA
 BY
 Perry S. Clark, Wendy S. Scratch, Gaylord W. Bias, Gregory B. Stander, Jenne L. Sexton, and Bridgette J. Krawczak
 2007