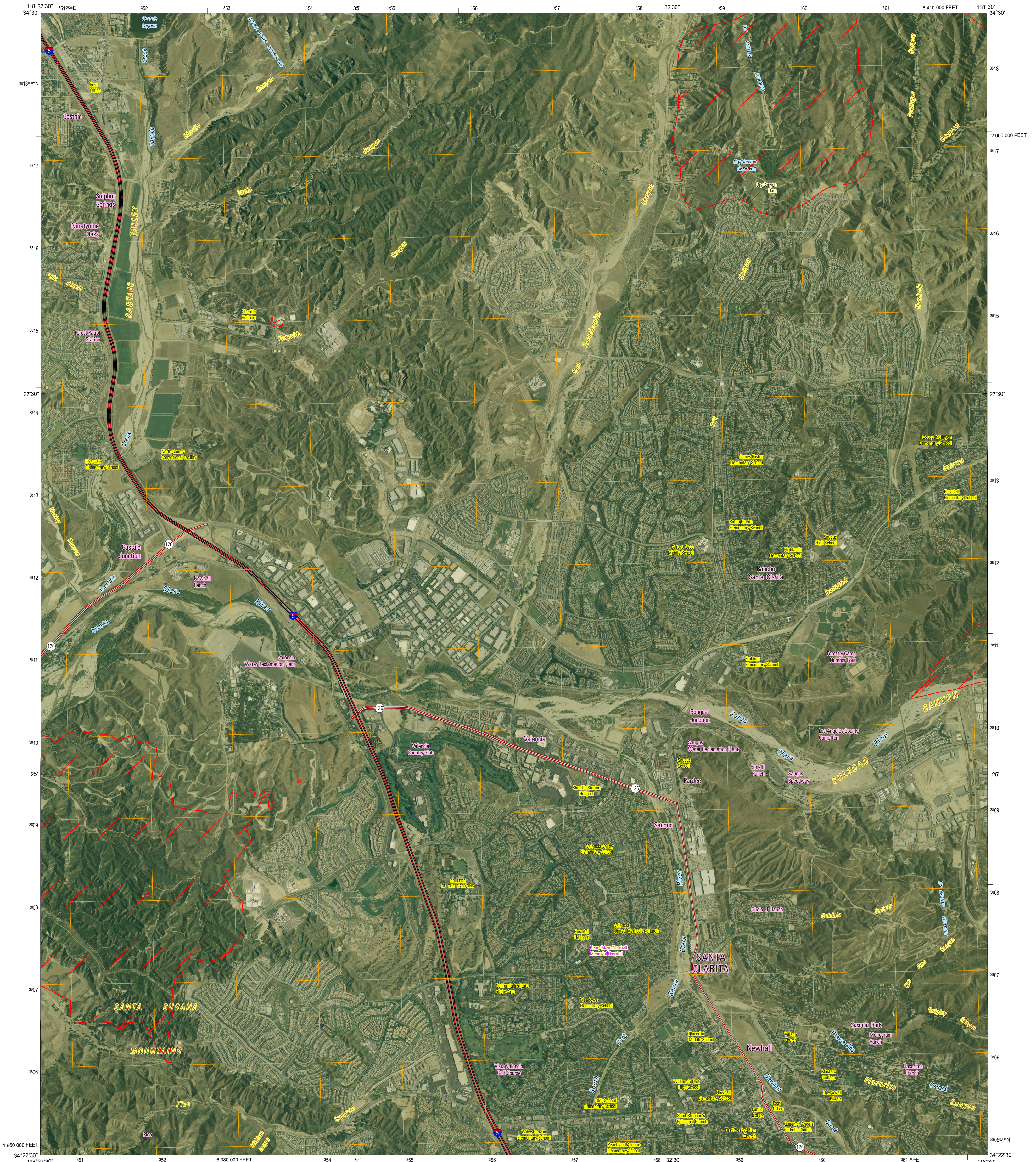




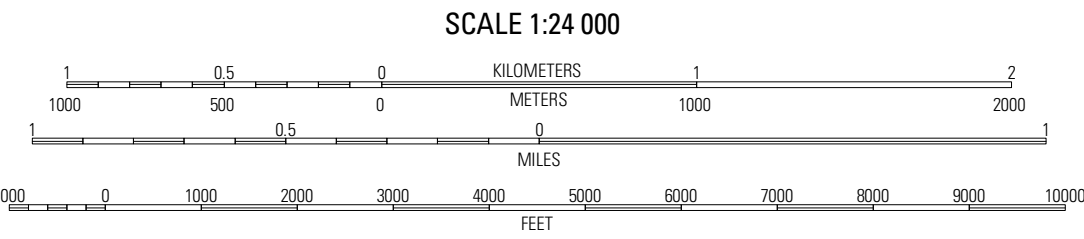
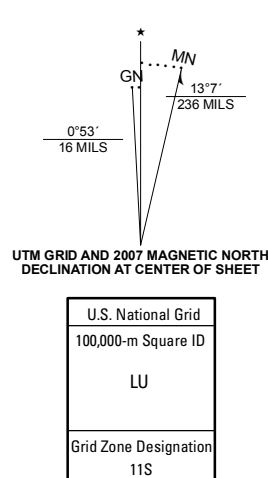
U.S. DEPARTMENT OF THE INTERIOR
U.S. GEOLOGICAL SURVEY

OPEN-FILE REPORT 2008-1053
VERSION 1.0



Produced by the United States Geological Survey
North American Datum of 1983 (NAD83). Projection and
1 000-meter Universal Transverse Mercator grid, zone 11S
10 000-foot grid ticks: California Coordinate System of 1983 (zone 5)
Imagery: Digital Orthophoto Quadrangle USGS, 2005
Transportation: Tele Atlas, 2007
Names: Geographic Names Information System, 2006
Fire Perimeter Data: GeoMAC, Magic Fire, October 26, 2007
Buckweed Fire, October 24, 2007
Magic and Buckweed Fire perimeter data were acquired as the best available data
These data may not meet National Map Accuracy Standards

Road centerlines, road classification, route numbers, and street names © Tele Atlas 2007
Any use of trade, product, or firm names is for descriptive purposes only
and does not imply endorsement by the U.S. Government

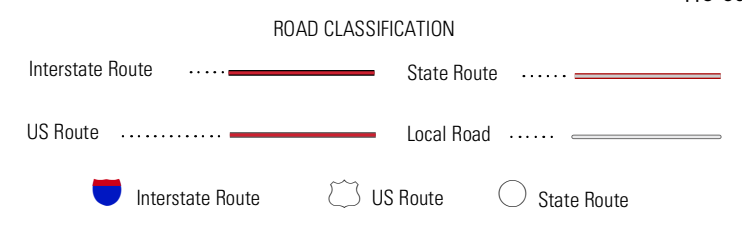


CALIFORNIA QUADRANGLE LOCATION

1	2	3
4	5	6
7	8	9

ADJOINING 7.5 QUADRANGLES

- 1 Wheeler Peak
- 2 Warm Springs Mountain
- 3 Green Valley
- 4 Val Verde
- 5 Mine Canyon
- 6 Simi Valley East
- 7 Oak Mountain
- 8 San Fernando



NEWHALL, CA
2007

THIS MAP COMPLIES WITH NATIONAL MAP ACCURACY STANDARDS
THIS IS A PRELIMINARY PRODUCT TO SUPPORT AGENCIES RESPONDING TO CALIFORNIA WILDFIRES
THIS PRODUCT IS RELEASED ON CONDITION THAT NEITHER THE USGS NOR THE UNITED STATES GOVERNMENT
BE HELD LIABLE FOR ANY DAMAGES RESULTING FROM ITS AUTHORIZED OR UNAUTHORIZED USE

PRELIMINARY IMAGE MAP OF THE 2007 MAGIC AND BUCKWEED FIRE PERIMETERS, NEWHALL QUADRANGLE, LOS ANGELES COUNTY, CALIFORNIA

BY
Perry S. Clark, Wendy S. Scratch, Gaylord W. Bias, Gregory B. Stander, Jenne L. Sexton, and Bridgette J. Krawczak
2007