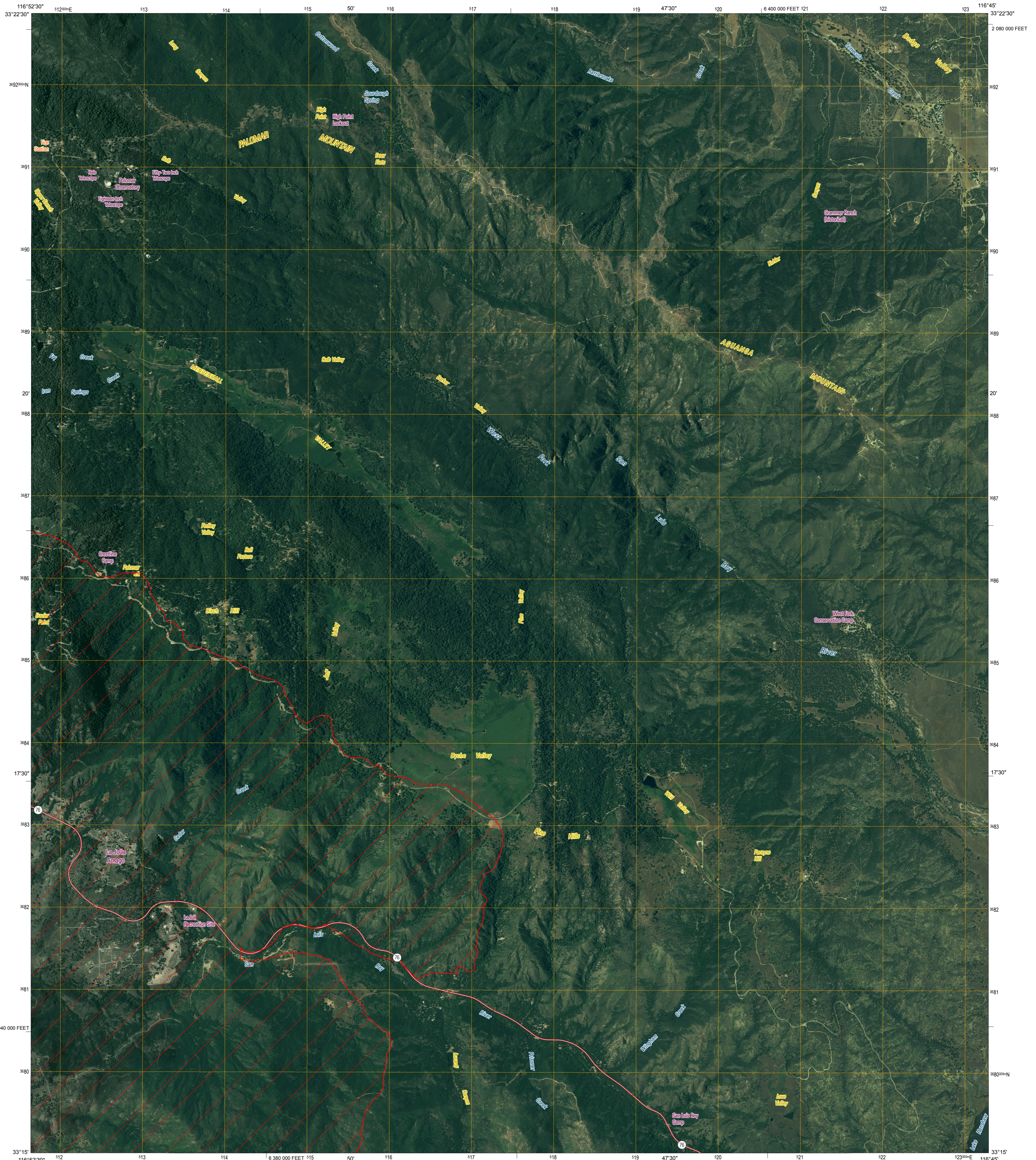




U.S. DEPARTMENT OF THE INTERIOR
U.S. GEOLOGICAL SURVEY

OPEN-FILE REPORT 2008-1058
VERSION 1.0



Produced by the United States Geological Survey

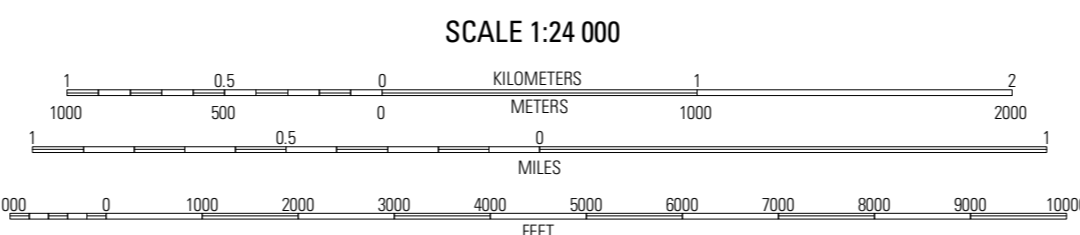
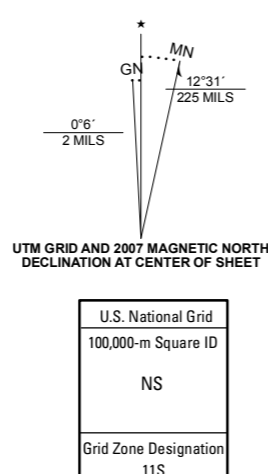
North American Datum of 1983 (NAD83). Projection and 1000-meter Universal Transverse Mercator grid, zone 11S
10 000-foot grid ticks: California Coordinate System of 1983 (zone 6)

Imagery Digital Orthophoto Quadrangle USGS, 2005
Transportation Tele Atlas, 2007
Names Geographic Names Information System, 2006
Fire Perimeter Data GeoMAC, October 30, 2007

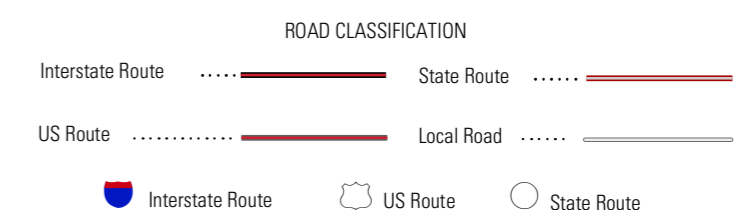
Poomacha Fire perimeter data were acquired as the best available data. These data may not meet National Map Accuracy Standards.

Road centerlines, road classification, route numbers, and street names © Tele Atlas 2007

Any use of trade, product, or firm names is for descriptive purposes only and does not imply endorsement by the U.S. Government



CALIFORNIA
QUADRANGLE LOCATION



PALOMAR OBSERVATORY, CA

2007

1	2	3
4	5	6
7	8	9

ADJOINING 7.5 QUADRANGLES

THIS MAP COMPLIES WITH NATIONAL MAP ACCURACY STANDARDS
THIS IS A PRELIMINARY PRODUCT TO SUPPORT AGENCIES RESPONDING TO CALIFORNIA WILDFIRES
THIS PRODUCT IS RELEASED ON CONDITION THAT NEITHER THE USGS NOR THE UNITED STATES GOVERNMENT
BE HELD LIABLE FOR ANY DAMAGES RESULTING FROM ITS AUTHORIZED OR UNAUTHORIZED USE

PRELIMINARY IMAGE MAP OF THE 2007 POOMACHA FIRE PERIMETER, PALOMAR OBSERVATORY QUADRANGLE, SAN DIEGO COUNTY, CALIFORNIA
BY

Perry S. Clark, Wendy S. Scratch, Gaylord W. Bias, Gregory B. Stander, Jenne L. Sexton, and Bridgette J. Krawczak
2007