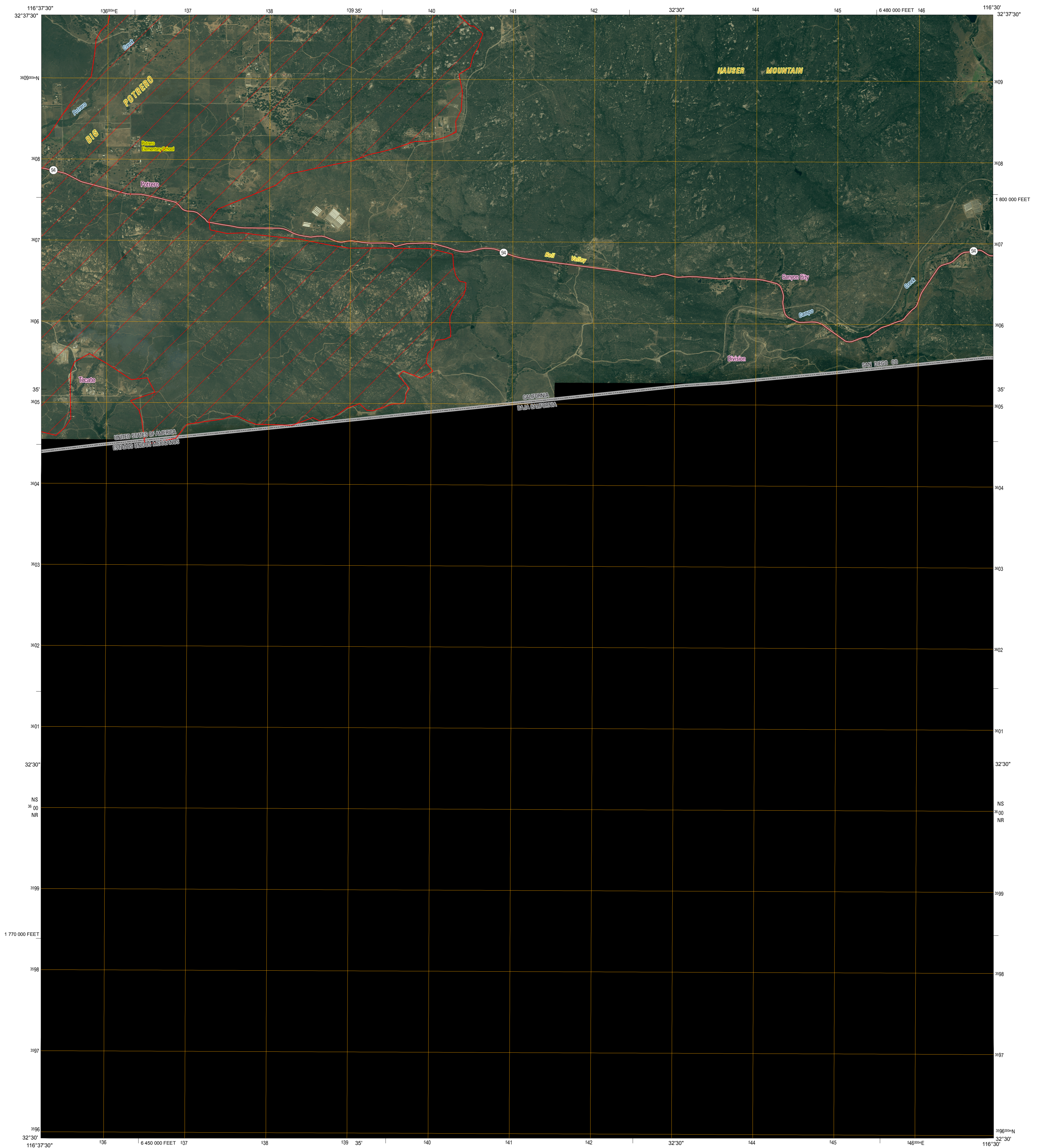




U.S. DEPARTMENT OF THE INTERIOR  
U.S. GEOLOGICAL SURVEY

OPEN-FILE REPORT 2008-1061  
VERSION 1.0

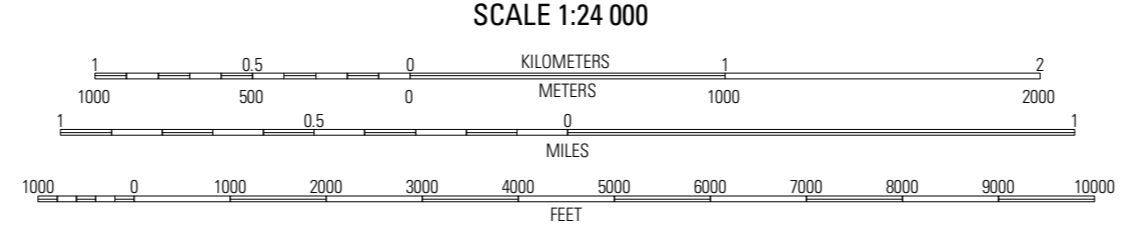
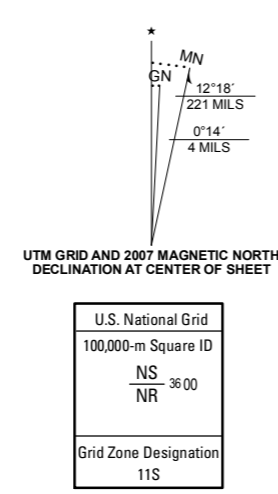


Produced by the United States Geological Survey  
 North American Datum of 1983 (NAD83). Projection and 1 000-meter Universal Transverse Mercator grid, zone 11S  
 10 000-foot grid ticks: California Coordinate System of 1983 (zone 6)  
 Imagery: Digital Orthophoto Quadrangle USGS, 2005  
 Transportation: Tele Atlas, 2007  
 Names: Geographic Names Information System, 2006  
 Fire Perimeter Data: GeoMAC, October 28, 2007

Harris Fire perimeter data were acquired as the best available data. These data may not meet National Map Accuracy Standards.

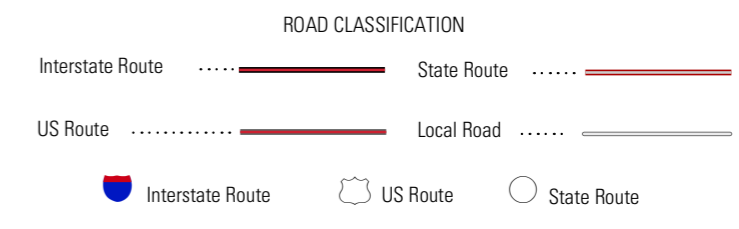
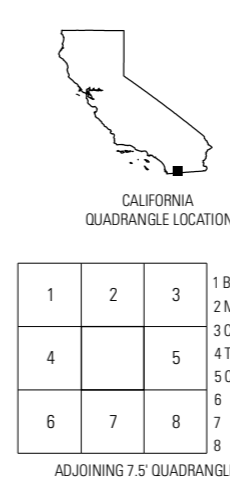
Road centerlines, road classification, route numbers, and street names © Tele Atlas 2007

Any use of trade, product, or firm names is for descriptive purposes only and does not imply endorsement by the U.S. Government



THIS MAP COMPLIES WITH NATIONAL MAP ACCURACY STANDARDS

THIS IS A PRELIMINARY PRODUCT TO SUPPORT AGENCIES RESPONDING TO CALIFORNIA WILDFIRES. THIS PRODUCT IS RELEASED ON CONDITION THAT NEITHER THE USGS NOR THE UNITED STATES GOVERNMENT BE HELD LIABLE FOR ANY DAMAGES RESULTING FROM ITS AUTHORIZED OR UNAUTHORIZED USE.



1	2	3
4	5	6
7	8	9

ADJOINING 7.5 QUADRANGLES

POTRERO, CA  
2007

PRELIMINARY IMAGE MAP OF THE 2007 HARRIS FIRE PERIMETER, POTRERO QUADRANGLE, SAN DIEGO COUNTY, CALIFORNIA  
 BY  
 Perry S. Clark, Wendy S. Scratch, Gaylord W. Bias, Gregory B. Stander, Jenne L. Sexton, and Bridgette J. Krawczak  
 2007