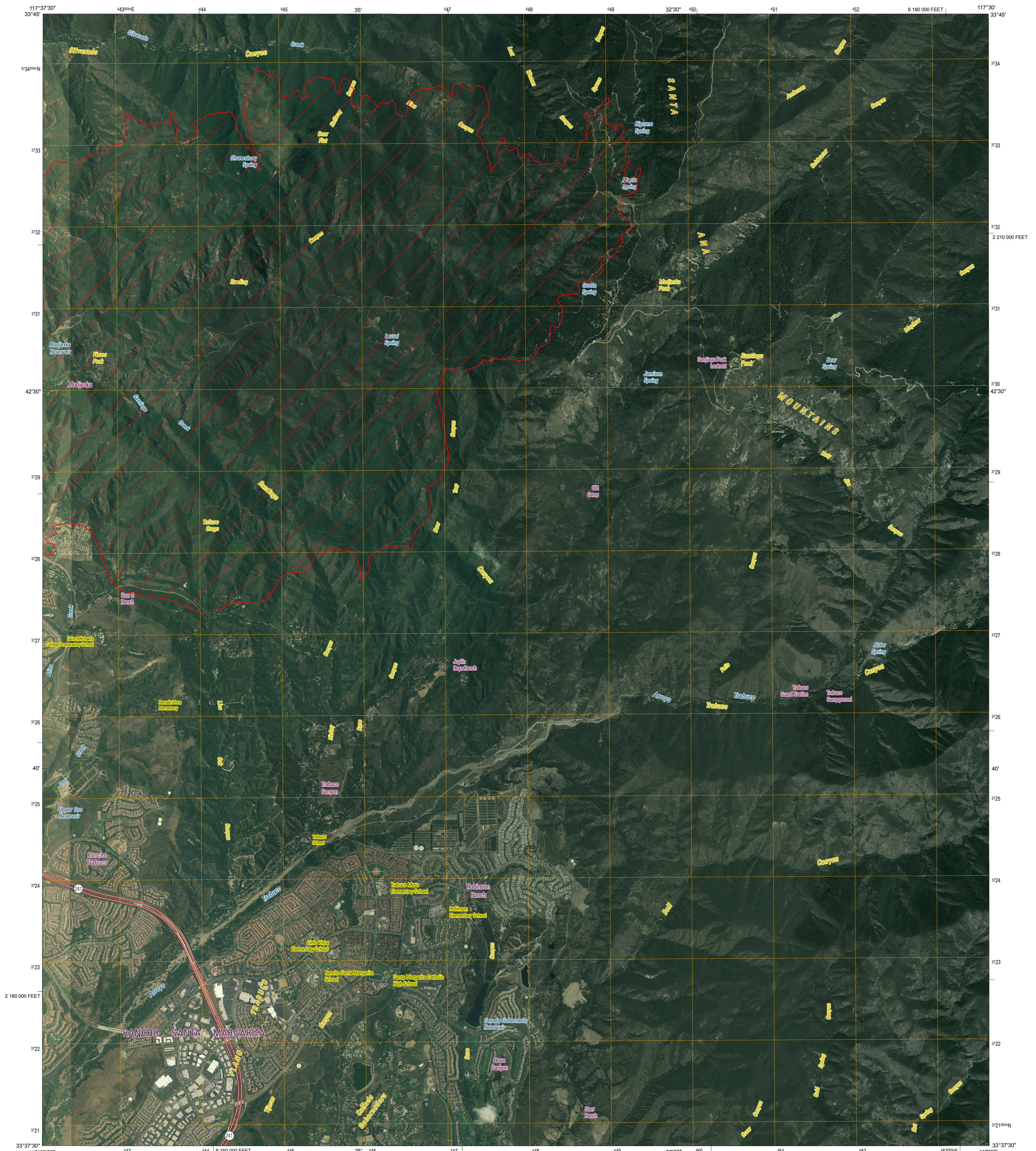




U.S. DEPARTMENT OF THE INTERIOR
U.S. GEOLOGICAL SURVEY

OPEN-FILE REPORT 2008-1072
VERSION 1.0



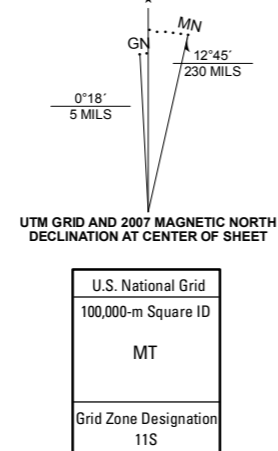
Produced by the United States Geological Survey

North American Datum of 1983 (NAD83). Projection and 1 000-meter Universal Transverse Mercator grid, zone 11S
10 000-foot grid ticks: California Coordinate System of 1983 (zone 6)

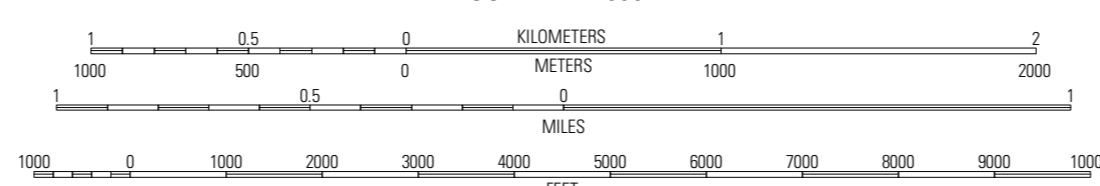
Imagery: Digital Orthophoto Quadrangle, USGS, 2005
Transportation: Tele Atlas, 2007
Names: Geographic Names Information System, 2006
Fire Perimeter Data: GeoMAC, October 28, 2007
Santiago Fire perimeter data was acquired as the best available data. This data may not meet National Map Accuracy Standards

Any centerlines, road classification, route numbers, and street names © Tele Atlas 2007

Any use of trade, product, or firm names is for descriptive purposes only and does not imply endorsement by the U.S. Government



SCALE 1:24 000



THIS MAP COMPLIES WITH NATIONAL MAP ACCURACY STANDARDS
THIS IS A PRELIMINARY PRODUCT TO SUPPORT AGENCIES RESPONDING TO CALIFORNIA WILDFIRES
THIS PRODUCT IS RELEASED ON CONDITION THAT NEITHER THE USGS NOR THE UNITED STATES GOVERNMENT
BE HELD LIABLE FOR ANY DAMAGES RESULTING FROM ITS AUTHORIZED OR UNAUTHORIZED USE

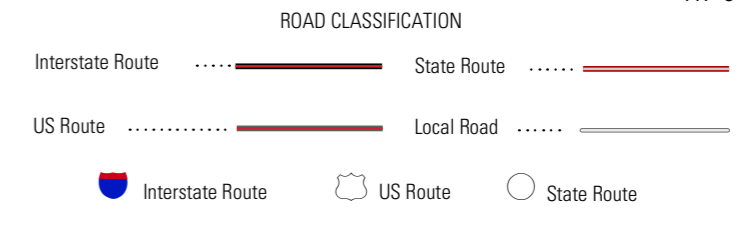


CALIFORNIA QUADRANGLE LOCATION

1	2	3
4	5	
6	7	8

ADJOINING 7.5 QUADRANGLES

- 1 Black Star Canyon
- 2 Corona South
- 3 Lake Mathews
- 4 Lake Forest
- 5 Lake Hill
- 6 San Juan Capistrano
- 7 Canada Gobernadora
- 8 Sierra Peak



SANTIAGO PEAK, CA
2007

PRELIMINARY IMAGE MAP OF THE 2007 SANTIAGO FIRE PERIMETER, SANTIAGO PEAK QUADRANGLE, ORANGE AND RIVERSIDE COUNTIES, CALIFORNIA

BY

Perry S. Clark, Wendy S. Scratch, Gaylord W. Bias, Gregory B. Stander, Jenne L. Sexton, and Bridgette J. Krawczak
2007