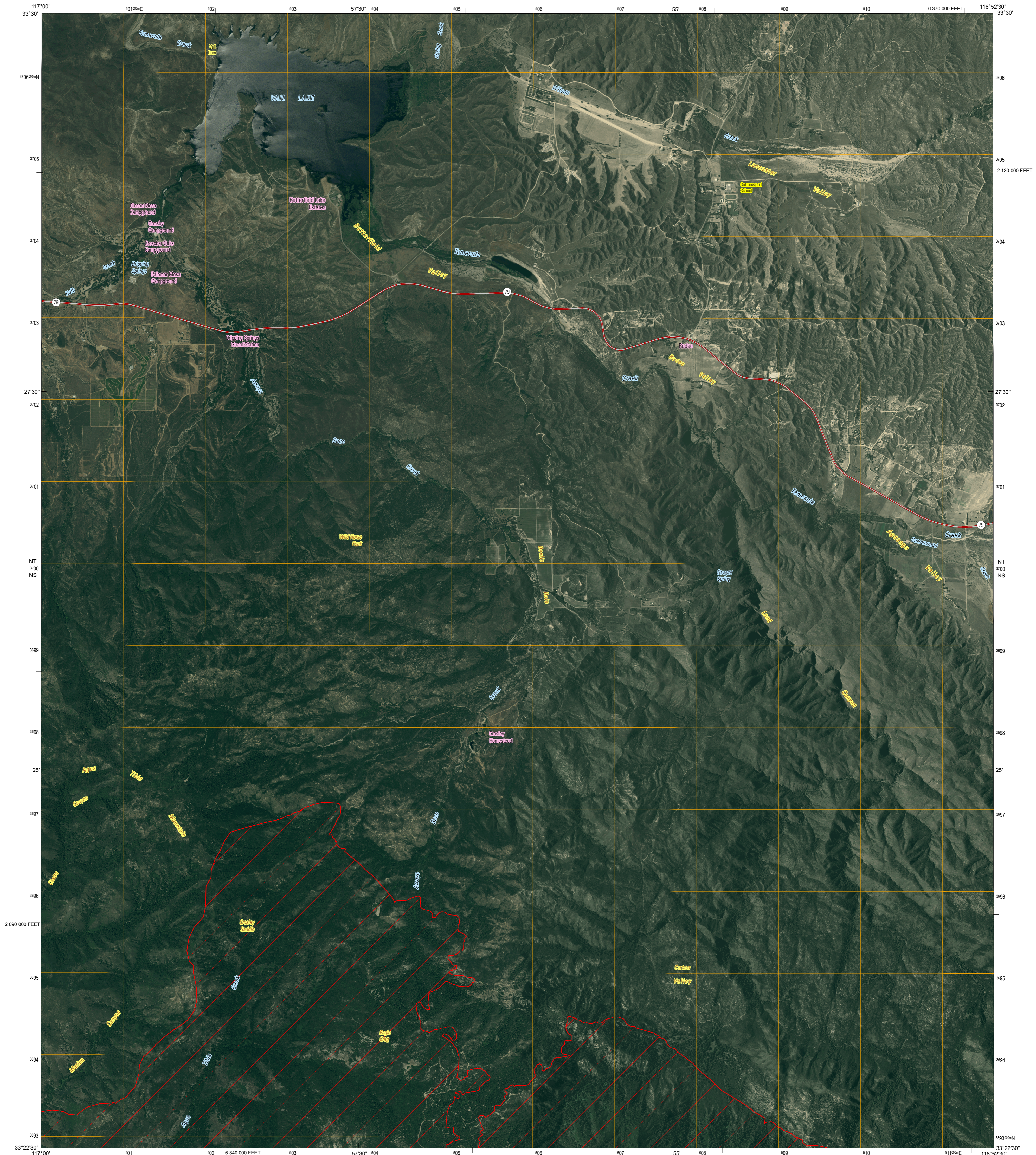


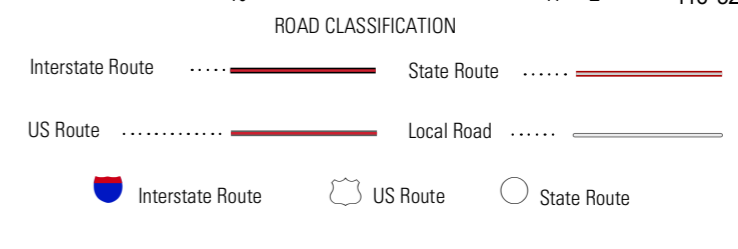
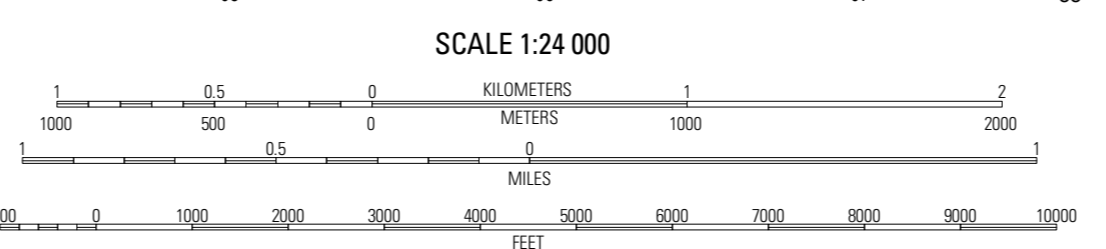
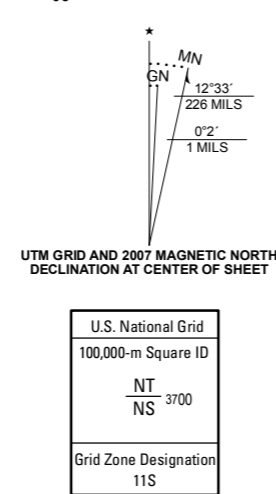


U.S. DEPARTMENT OF THE INTERIOR
U.S. GEOLOGICAL SURVEY

OPEN-FILE REPORT 2008-1078
VERSION 1.0



Produced by the United States Geological Survey
 North American Datum of 1983 (NAD83). Projection and 1 000-meter Universal Transverse Mercator grid, zone 11S 10 000-foot grid ticks: California Coordinate System of 1983 (zone 6)
 Imagery: Digital Orthophoto Quadrangle USGS, 2005
 Transportation: Tele Atlas, 2007
 Names: Geographic Names Information System, 2006
 Fire Perimeter Data: GeoMAC, October 30, 2007
 Poomacha Fire perimeter data were acquired as the best available data. These data may not meet National Map Accuracy Standards.
 Road centerlines, road classification, route numbers, and street names © Tele Atlas 2007
 Any use of trade, product, or firm names is for descriptive purposes only and does not imply endorsement by the U.S. Government



1	2	3
4	5	6
7	8	9

ADJOINING 7.5 QUADRANGLES

VAIL LAKE, CA
2007

THIS MAP COMPLIES WITH NATIONAL MAP ACCURACY STANDARDS
 THIS IS A PRELIMINARY PRODUCT TO SUPPORT AGENCIES RESPONDING TO CALIFORNIA WILDFIRES
 THIS PRODUCT IS RELEASED ON CONDITION THAT NEITHER THE USGS NOR THE UNITED STATES GOVERNMENT
 BE HELD LIABLE FOR ANY DAMAGES RESULTING FROM ITS AUTHORIZED OR UNAUTHORIZED USE

PRELIMINARY IMAGE MAP OF THE 2007 POOMACHA FIRE PERIMETER, VAIL LAKE QUADRANGLE, RIVERSIDE AND SAN DIEGO COUNTIES, CALIFORNIA
 BY
 Perry S. Clark, Wendy S. Scratch, Gaylord W. Bias, Gregory B. Stander, Jenne L. Sexton, and Bridgette J. Krawczak
 2007