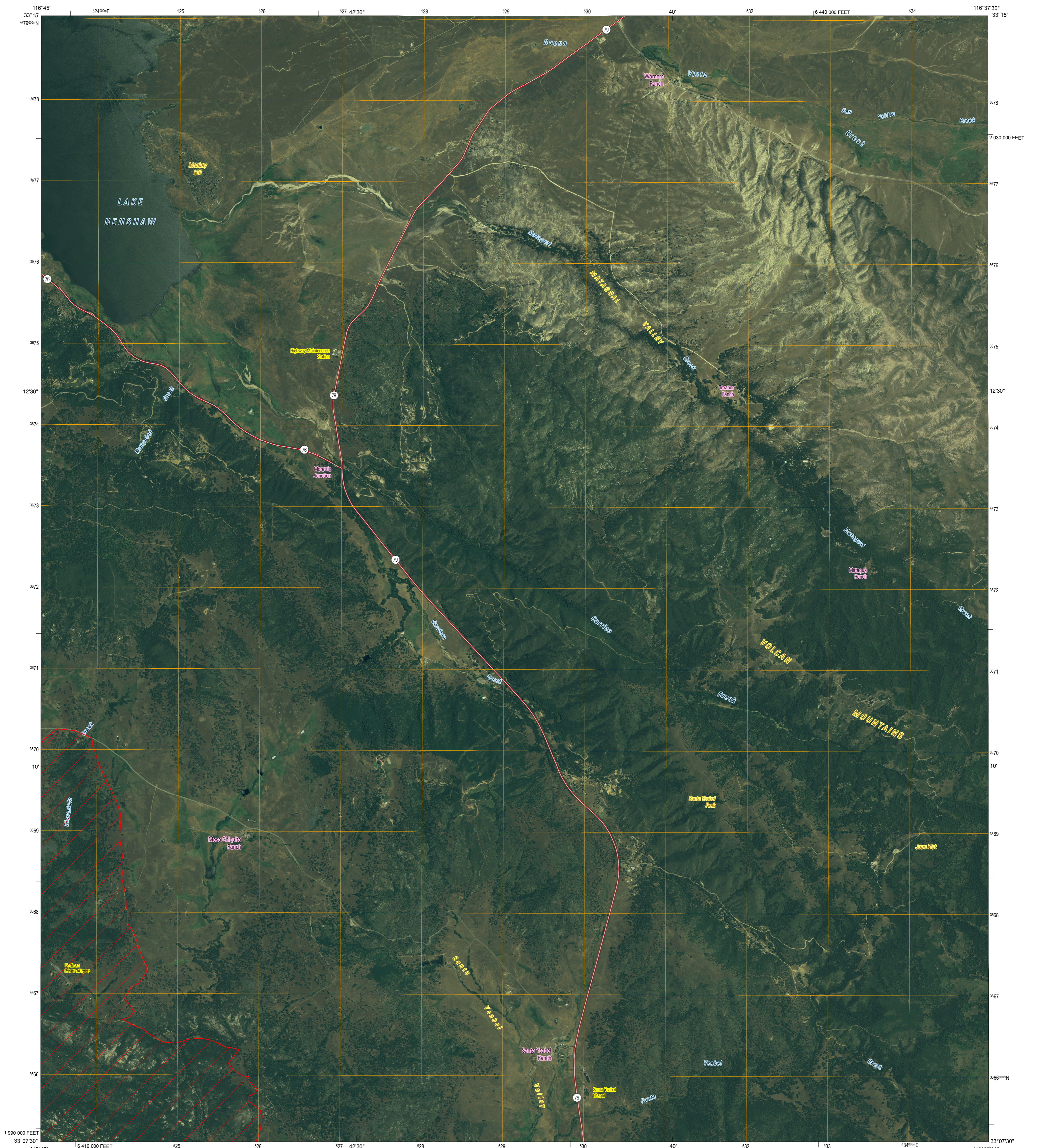




U.S. DEPARTMENT OF THE INTERIOR
U.S. GEOLOGICAL SURVEY

OPEN-FILE REPORT 2008-1082
VERSION 1.0

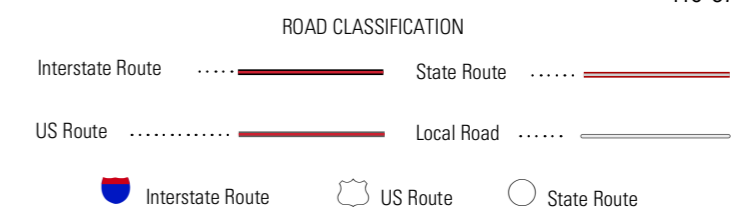
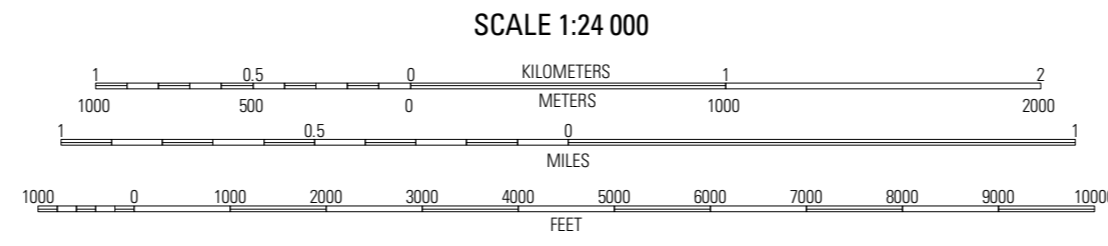
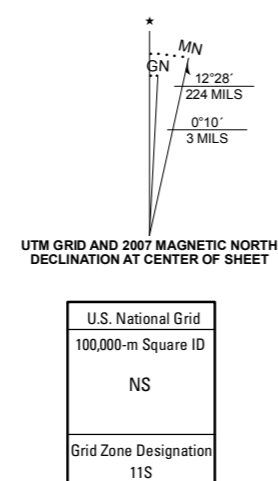


Produced by the United States Geological Survey
North American Datum of 1983 (NAD83). Projection and 1000-meter Universal Transverse Mercator grid, zone 11S
10 000-foot grid ticks: California Coordinate System of 1983 (zone 6)
Imagery: Digital Orthophoto Quadrangle USGS, 2005
Transportation: Tele Atlas, 2007
Names: Geographic Names Information System, 2006
Fire Perimeter Data: GeoMAC, October 31, 2007

Witch Fire perimeter data were acquired as the best available data. These data may not meet National Map Accuracy Standards.

Road centerlines, road classification, route numbers, and street names © Tele Atlas 2007

Any use of trade, product, or firm names is for descriptive purposes only and does not imply endorsement by the U.S. Government



1	2	3
4	5	6
7	8	9

ADJOINING 7.5' QUADRANGLES

- 1 Pillamar Observatory
- 2 Warner Springs
- 3 Hot Springs Mountain
- 4 Mesa Grande
- 5 Ranchita
- 6 Ramona
- 7 Santa Trinita
- 8 Julian

WARNERS RANCH, CA
2007

PRELIMINARY IMAGE MAP OF THE 2007 WITCH FIRE PERIMETER, WARNERS RANCH QUADRANGLE, SAN DIEGO COUNTY, CALIFORNIA
BY
Perry S. Clark, Wendy S. Scratch, Gaylord W. Bias, Gregory B. Stander, Jenne L. Sexton, and Bridgette J. Krawczak
2007