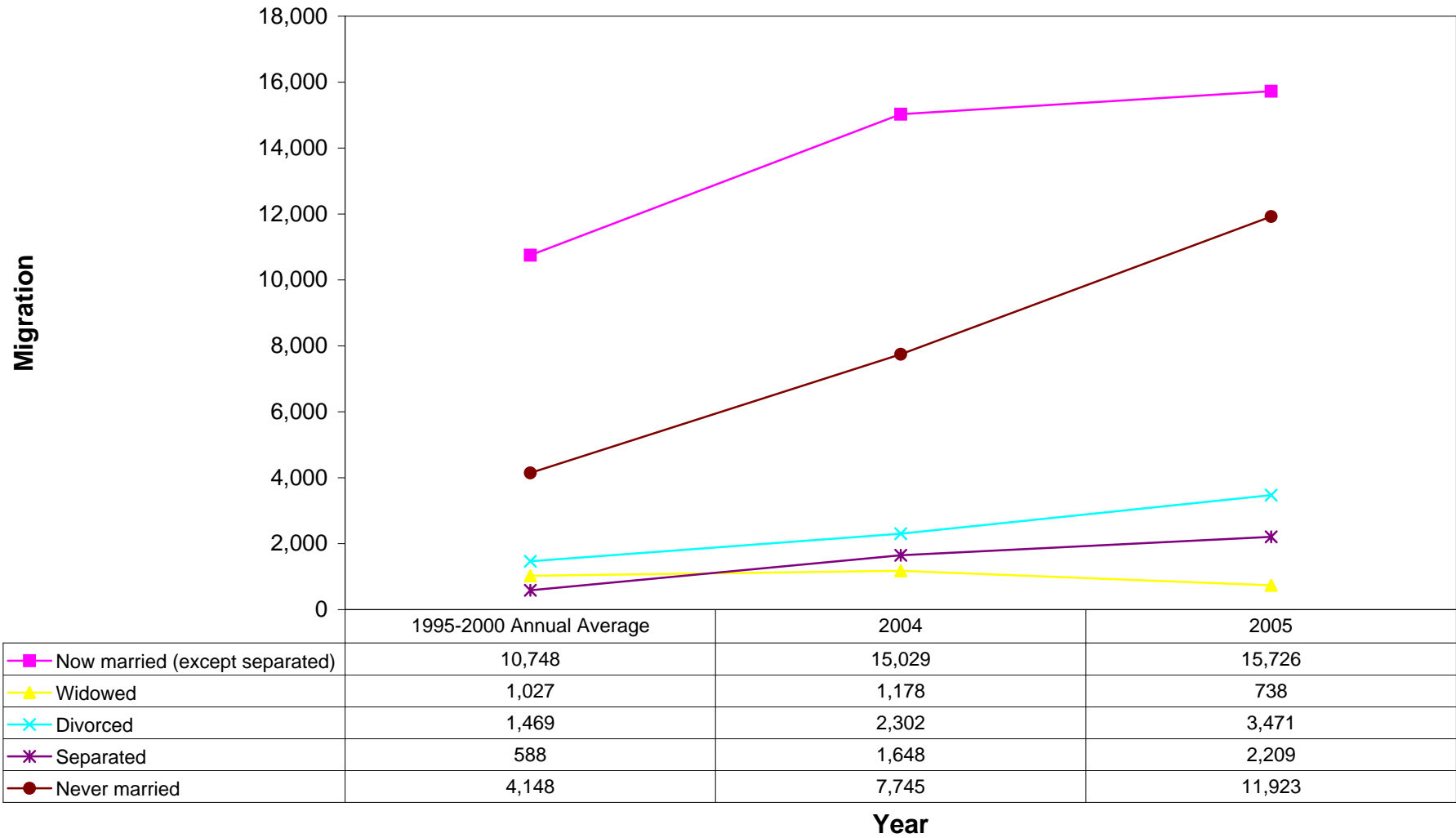
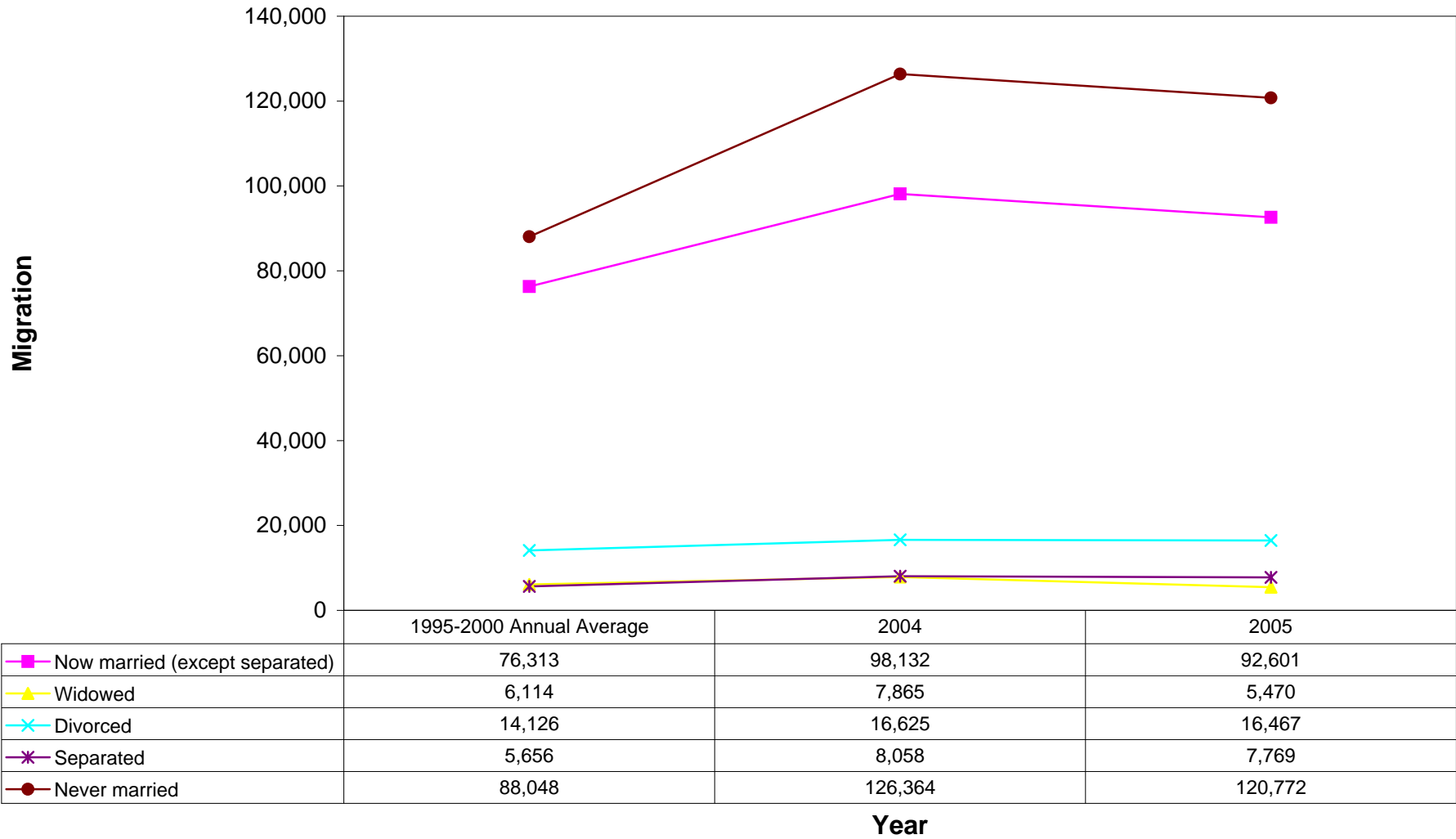


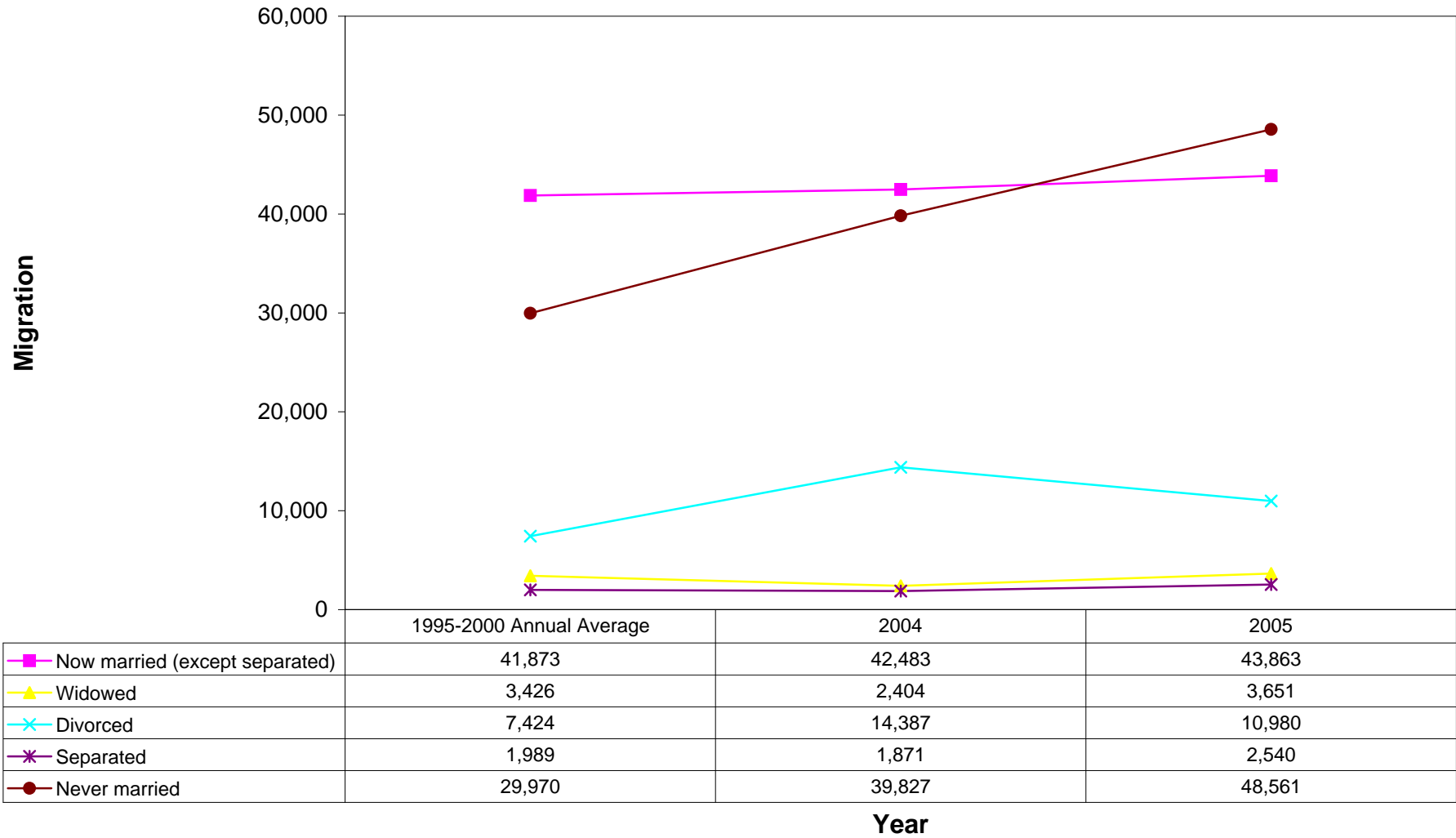
Kern County, California Inflow Migration by Marital Status 1995-2000, 2004-2005



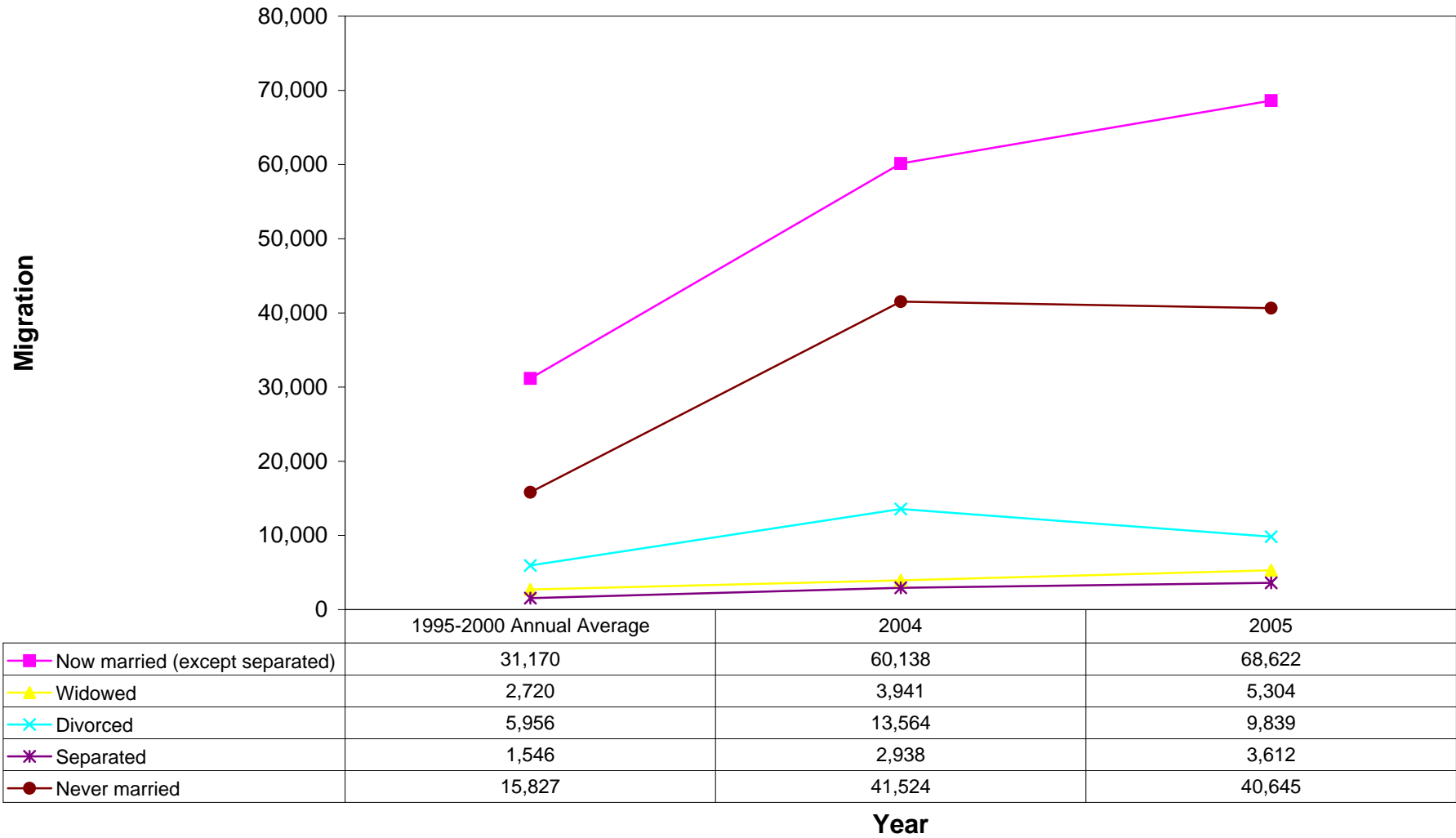
Los Angeles County, California Inflow Migration by Marital Status 1995-2000, 2004-2005



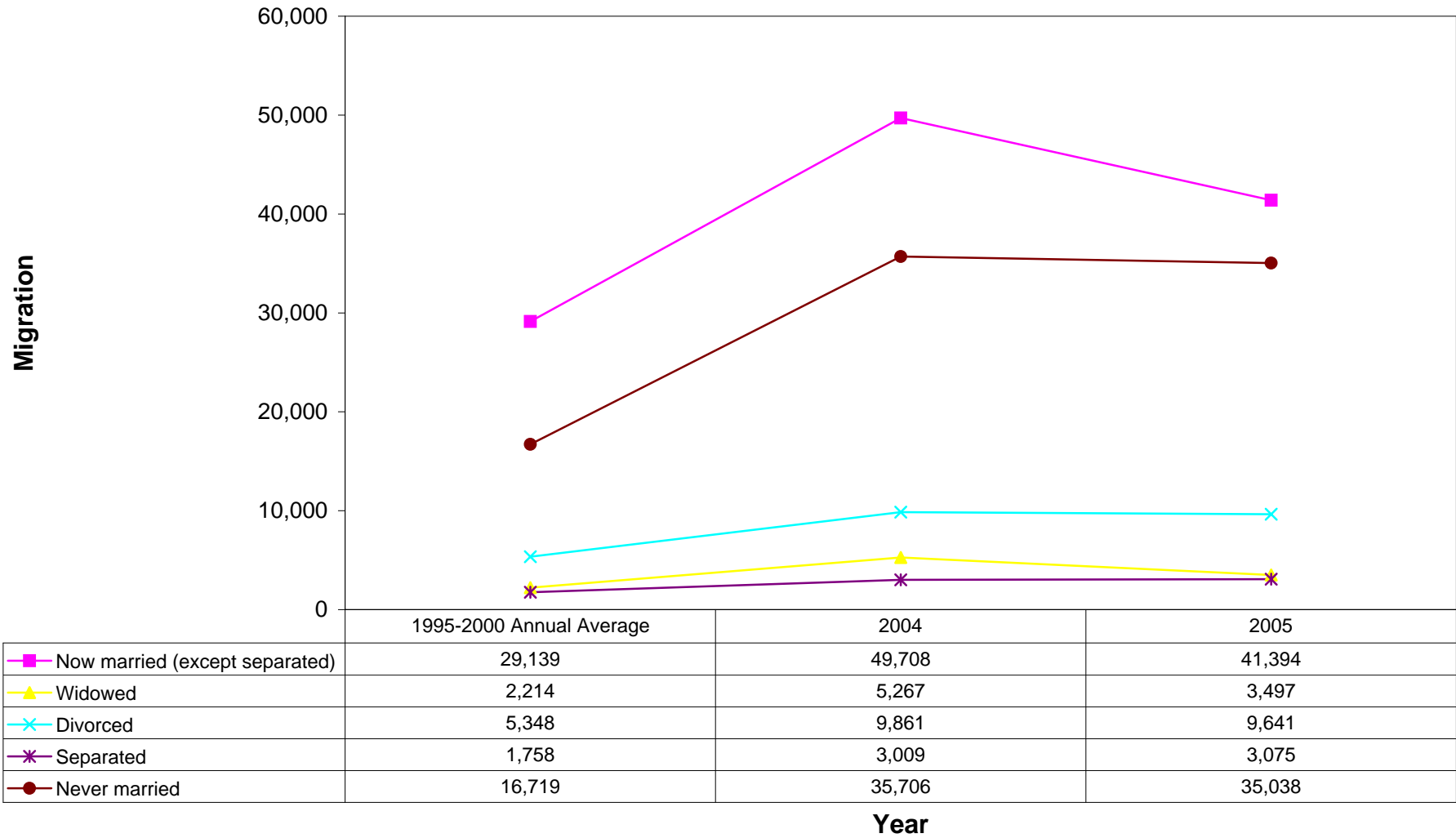
Orange County, California Inflow Migration by Marital Status 1995-2000, 2004-2005



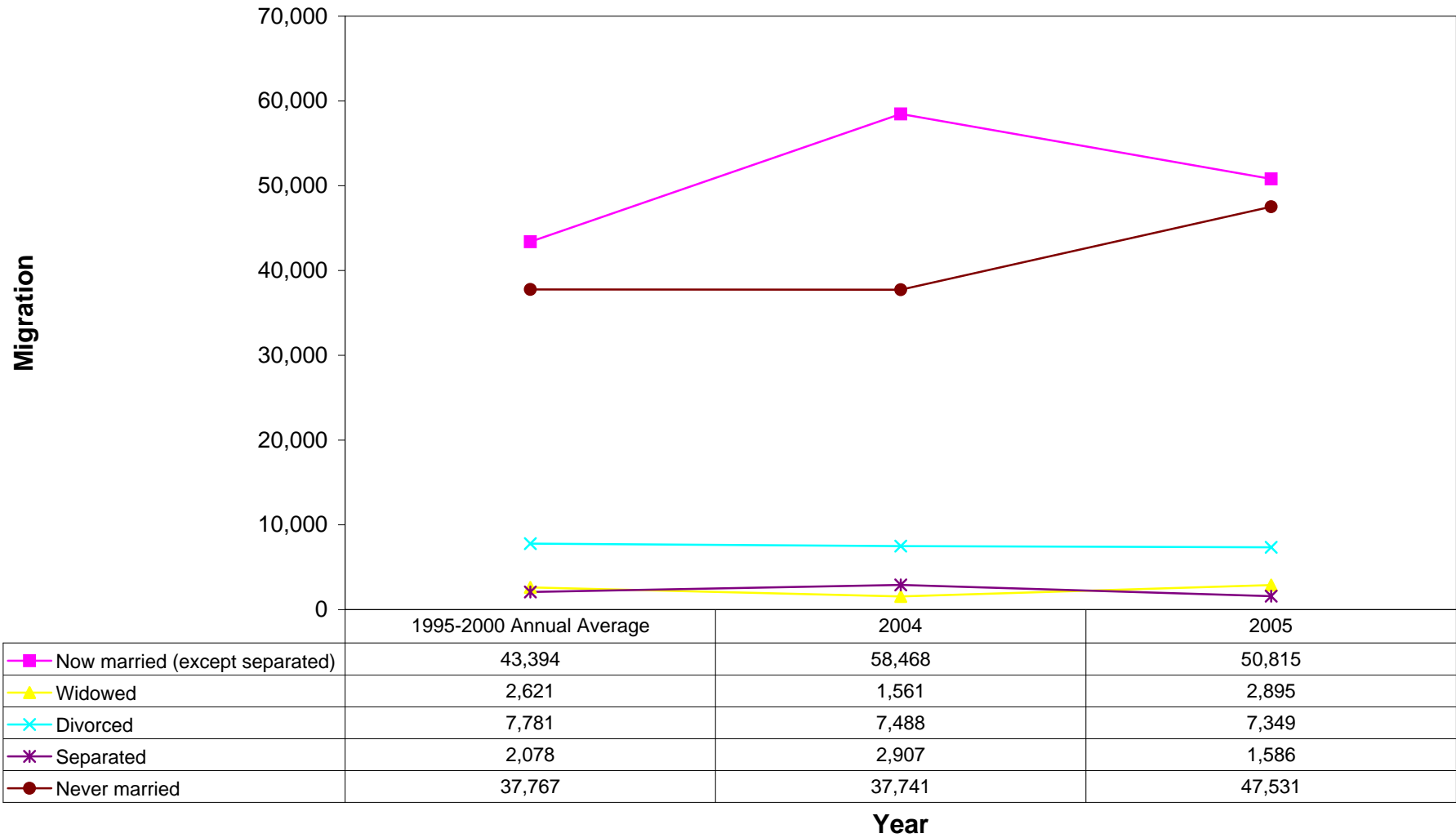
Riverside County, California Inflow Migration by Marital Status 1995-2000, 2004-2005



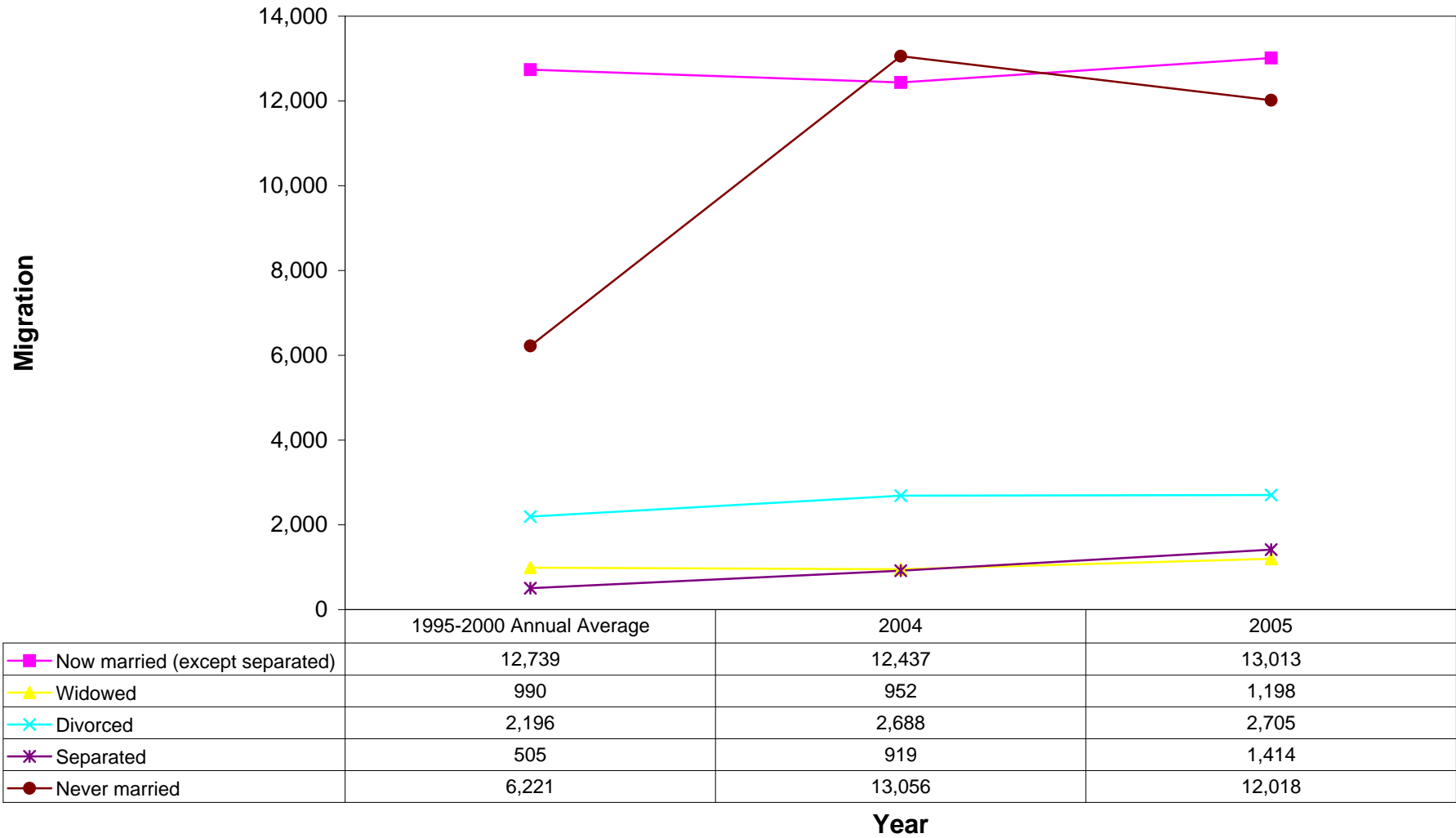
San Bernardino County, California Inflow Migration by Marital Status 1995-2000, 2004-2005



San Diego County, California Inflow Migration by Marital Status 1995-2000, 2004-2005



Ventura County, California Inflow Migration by Marital Status 1995-2000, 2004-2005



FIPS	MARITAL STATUS	INFLOW2004	INFLOWINTL2004	INFLOW2005	INFLOWINTL2005	TOTALINFLOW1995_2000	AVGTOTALINFLOW1995_2000	TOTALINFLOW2004	TOTALINFLOW2005
FIPS	MARITAL STATUS	INFLOW2004	INFLOWINTL2004	INFLOW2005	INFLOWINTL2005	TOTALINFLOW1995_2000	1995-2000 Annual Average	2004	2005
06029	Now married (except separated)	13,477	1,552	11,578	4,148	53,741	10,748	15,029	15,726
06029	Widowed	1,178	0	738	0	5,134	1,027	1,178	738
06029	Divorced	2,092	210	3,340	131	7,343	1,469	2,302	3,471
06029	Separated	840	808	1,933	276	2,938	588	1,648	2,209
06029	Never married	7,233	512	10,500	1,423	20,741	4,148	7,745	11,923
06037	Now married (except separated)	64,204	33,928	55,088	37,513	381,564	76,313	98,132	92,601
06037	Widowed	3,675	4,190	3,065	2,405	30,569	6,114	7,865	5,470
06037	Divorced	13,061	3,564	14,370	2,097	70,630	14,126	16,625	16,467
06037	Separated	6,489	1,569	5,371	2,398	28,278	5,656	8,058	7,769
06037	Never married	96,556	29,808	85,080	35,692	440,239	88,048	126,364	120,772
06059	Now married (except separated)	34,688	7,795	35,236	8,627	209,365	41,873	42,483	43,863
06059	Widowed	2,173	231	3,437	214	17,128	3,426	2,404	3,651
06059	Divorced	13,021	1,366	9,909	1,071	37,119	7,424	14,387	10,980
06059	Separated	1,451	420	2,119	421	9,946	1,989	1,871	2,540
06059	Never married	36,251	3,576	41,643	6,918	149,852	29,970	39,827	48,561
06065	Now married (except separated)	55,829	4,309	62,678	5,944	155,851	31,170	60,138	68,622
06065	Widowed	3,165	776	4,764	540	13,598	2,720	3,941	5,304
06065	Divorced	12,928	636	9,291	548	29,782	5,956	13,564	9,839
06065	Separated	2,521	417	3,116	496	7,730	1,546	2,938	3,612
06065	Never married	39,597	1,927	36,465	4,180	79,135	15,827	41,524	40,645
06071	Now married (except separated)	42,171	7,537	37,391	4,003	145,697	29,139	49,708	41,394
06071	Widowed	4,372	895	3,166	331	11,071	2,214	5,267	3,497
06071	Divorced	8,726	1,135	9,136	505	26,741	5,348	9,861	9,641
06071	Separated	2,724	285	3,075	0	8,791	1,758	3,009	3,075
06071	Never married	30,419	5,287	32,768	2,270	83,593	16,719	35,706	35,038
06073	Now married (except separated)	43,663	14,805	40,246	10,569	216,972	43,394	58,468	50,815
06073	Widowed	1,177	384	2,191	704	13,107	2,621	1,561	2,895
06073	Divorced	6,389	1,099	6,501	848	38,905	7,781	7,488	7,349
06073	Separated	2,548	359	1,542	44	10,388	2,078	2,907	1,586
06073	Never married	31,513	6,228	37,004	10,527	188,833	37,767	37,741	47,531
06111	Now married (except separated)	9,778	2,659	11,241	1,772	63,694	12,739	12,437	13,013
06111	Widowed	648	304	1,098	100	4,950	990	952	1,198
06111	Divorced	1,999	689	2,582	123	10,979	2,196	2,688	2,705
06111	Separated	919	0	1,117	297	2,525	505	919	1,414
06111	Never married	10,969	2,087	10,290	1,728	31,103	6,221	13,056	12,018

Census 2000 Migration DVD - Population 15 years and over
American Community Survey 2004, 2005 - Population 15 years and over