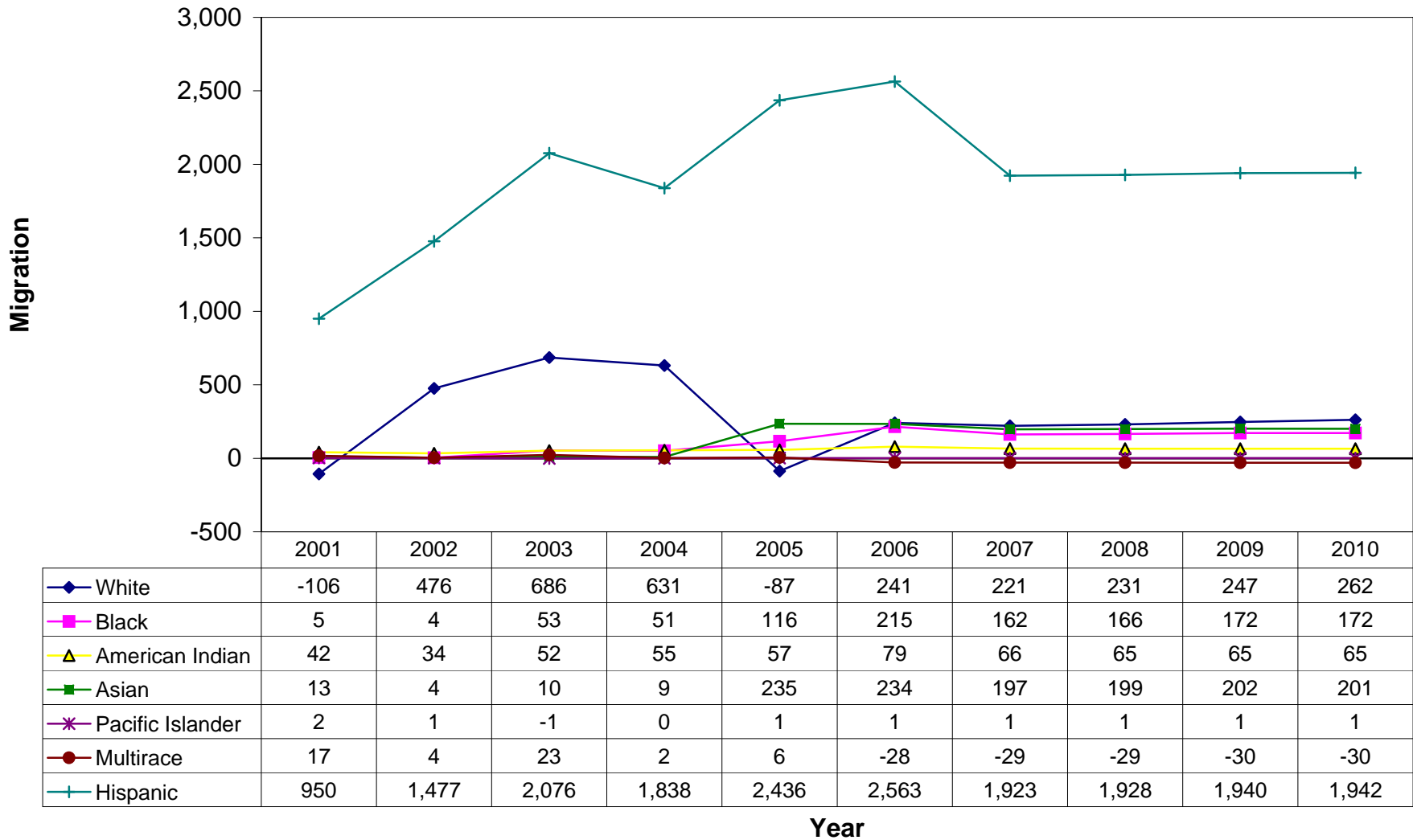
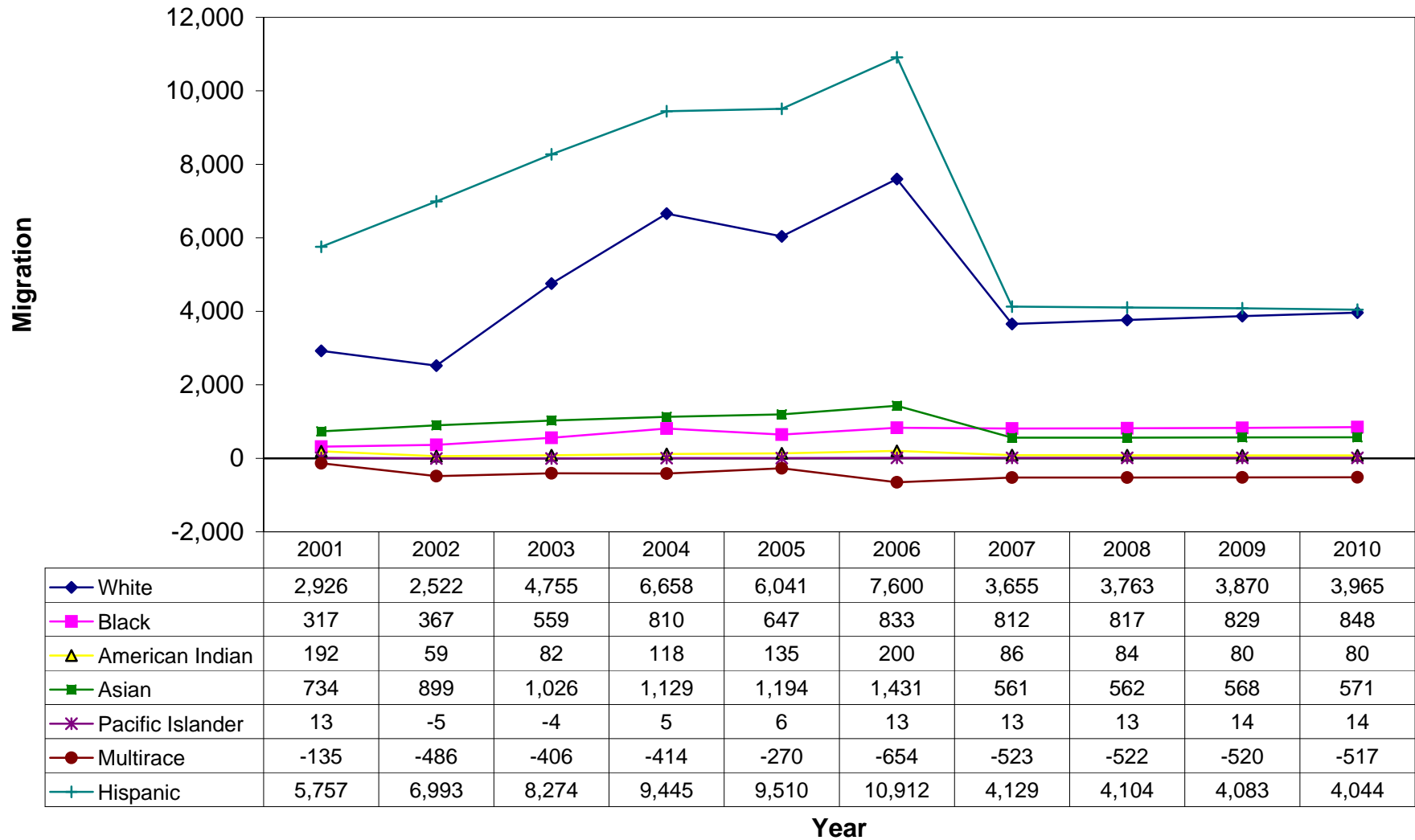


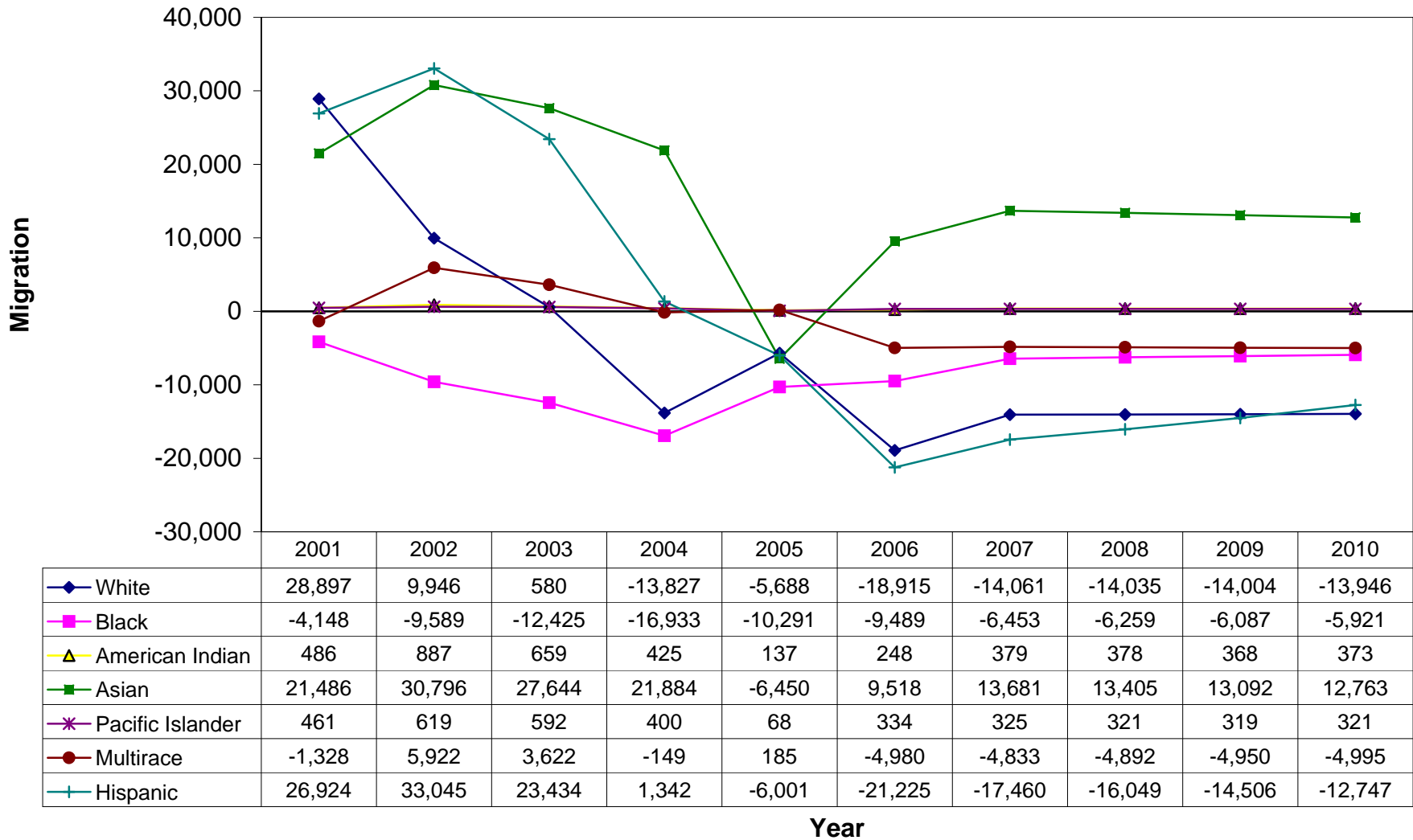
Imperial County, California Net Migration by Race 2001 - 2010



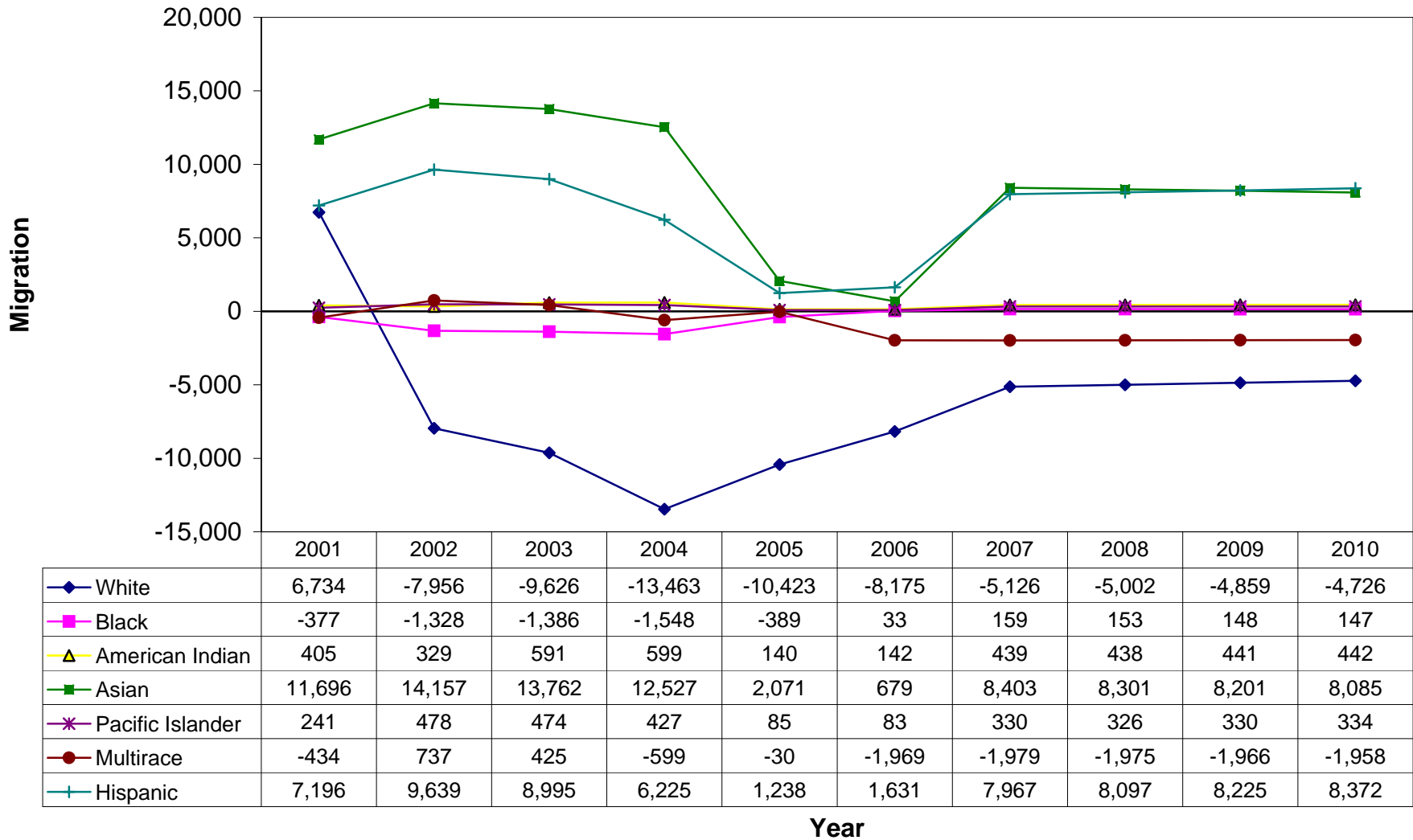
Kern County, California Net Migration by Race 2001 - 2010



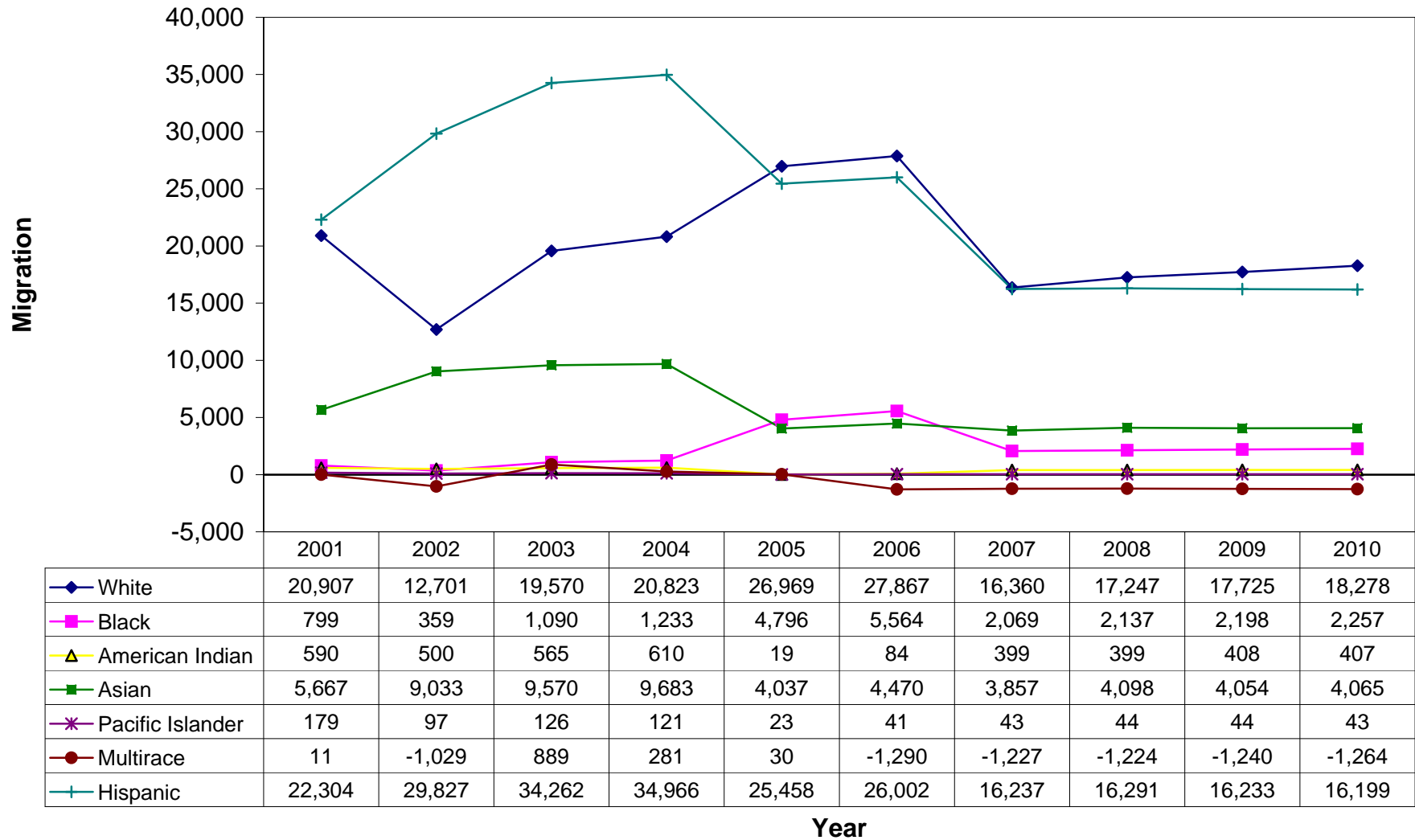
Los Angeles County, California Net Migration by Race 2001 - 2010



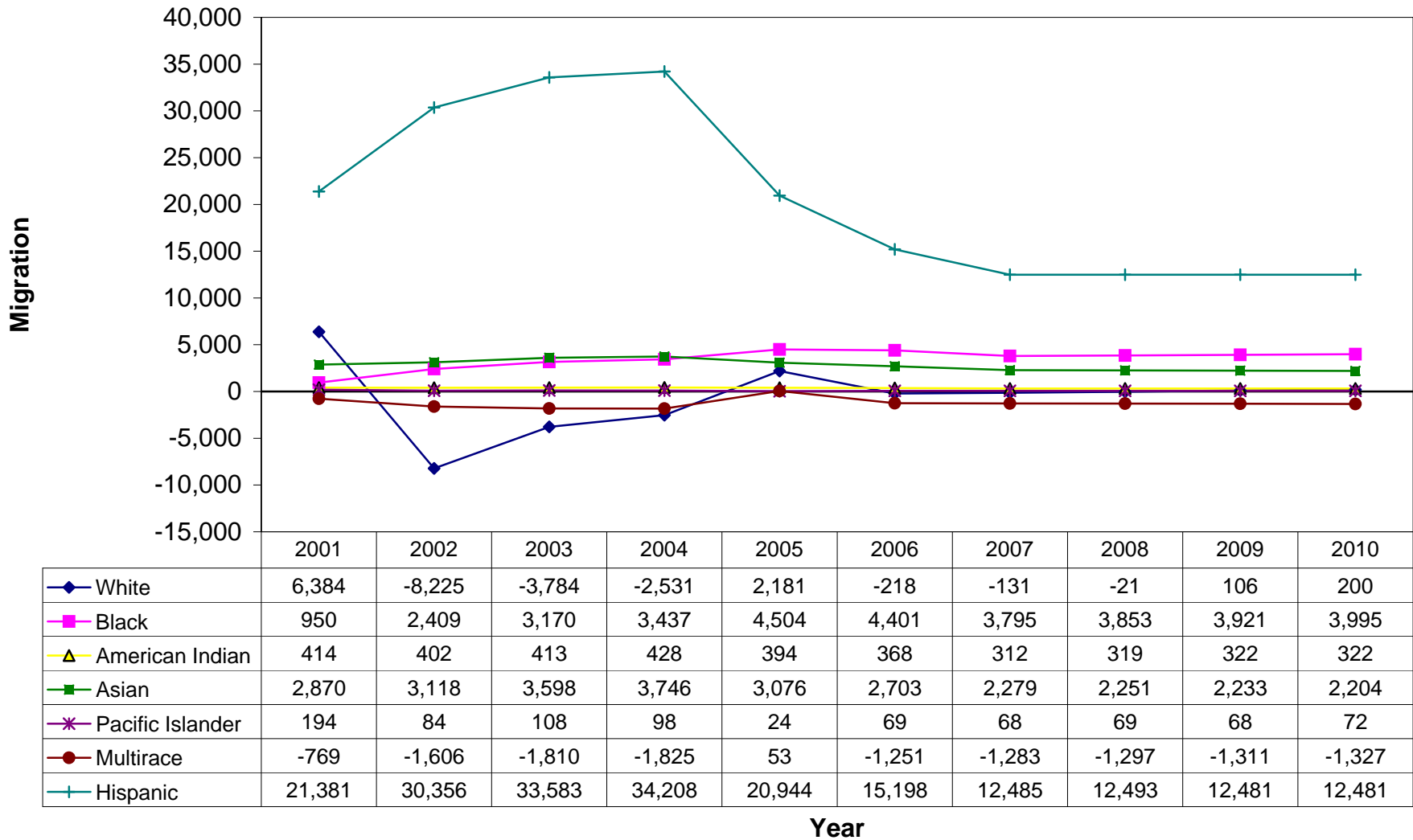
Orange County, California Net Migration by Race 2001 - 2010



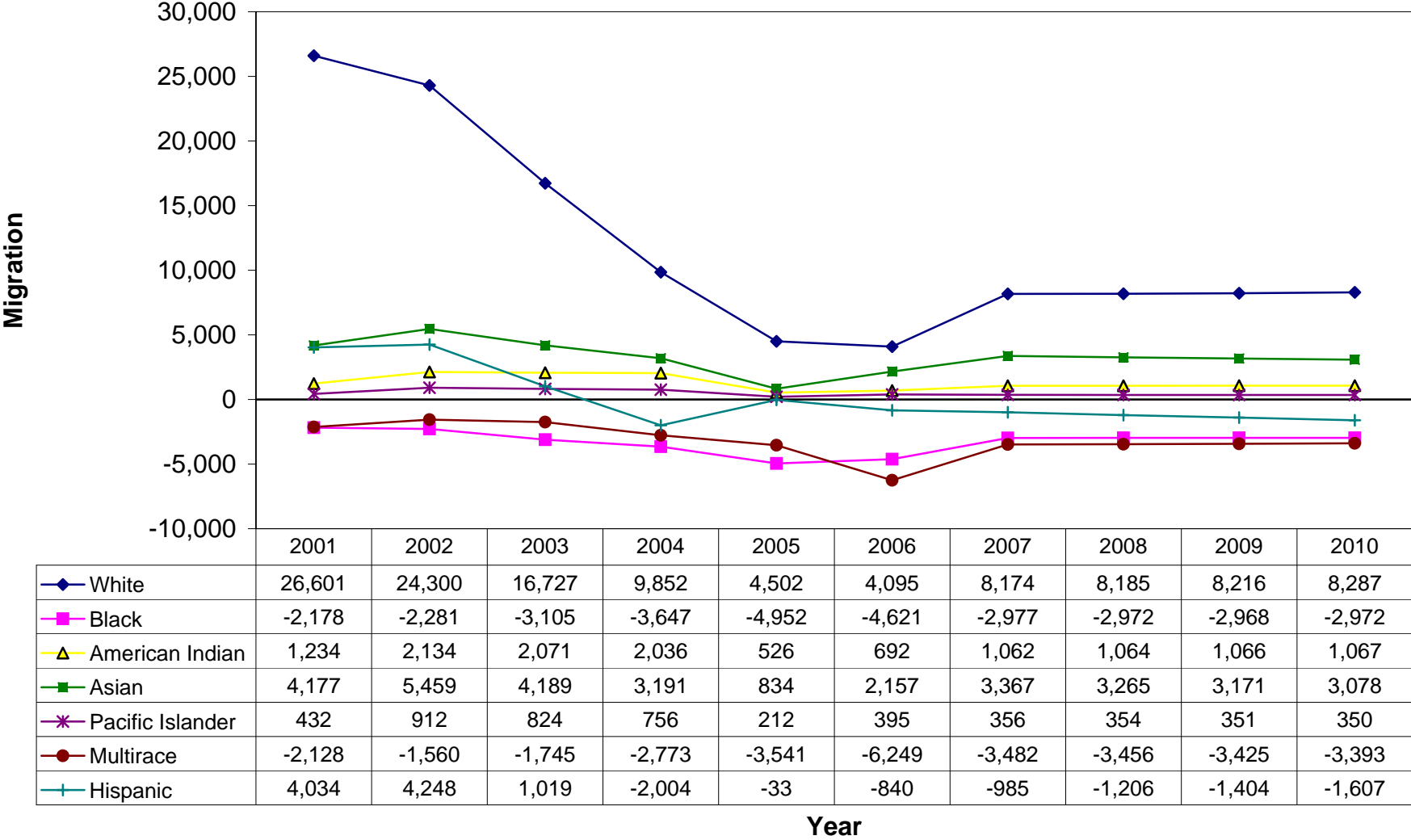
Riverside County, California Net Migration by Race 2001 - 2010



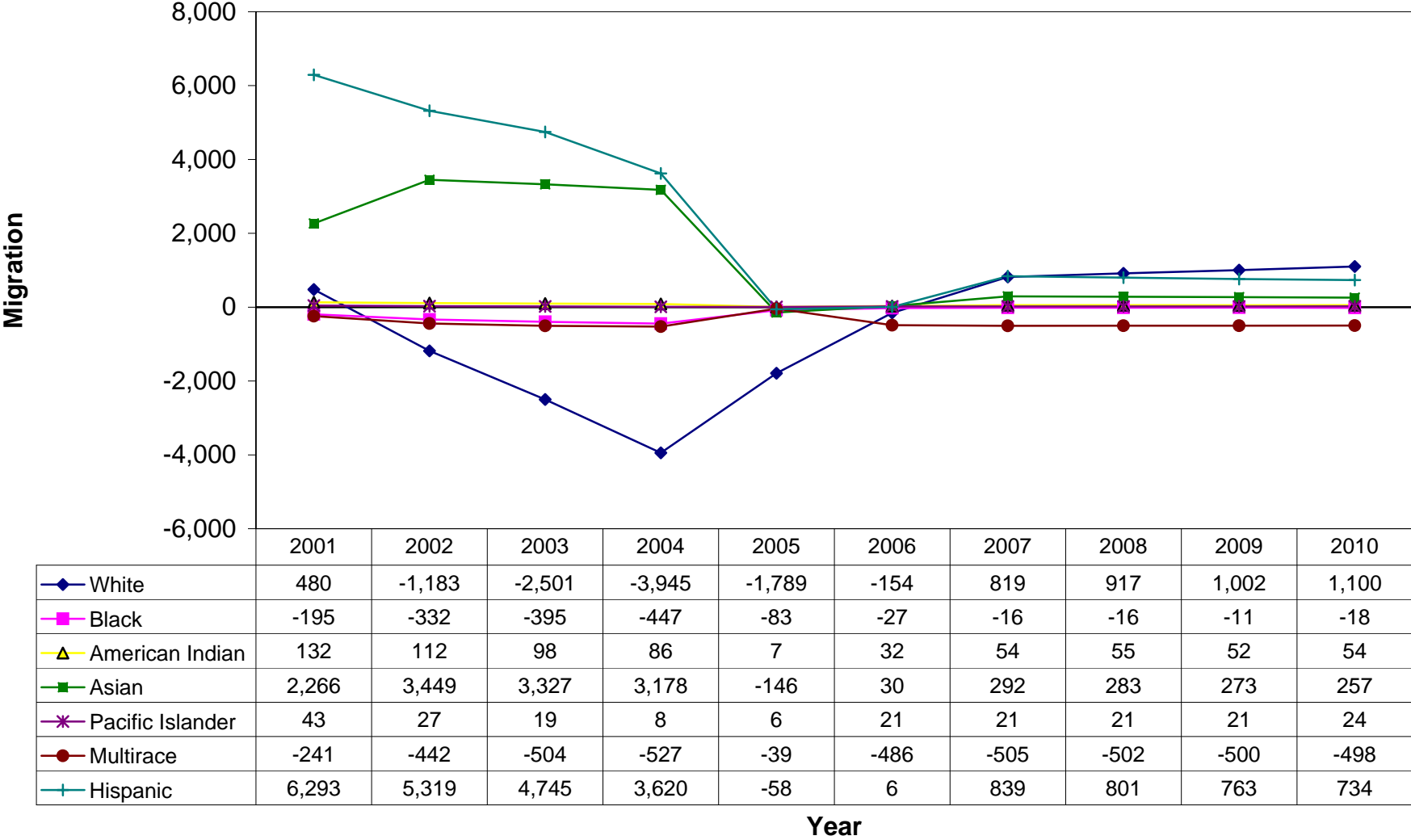
San Bernardino County, California Net Migration by Race 2001 - 2010



San Diego County, California Net Migration by Race 2001 - 2010



San Diego County, California Net Migration by Race 2001 - 2010



FIPS	COUNTY	RACE	POP2000	POP2001	POP2002	POP2003	POP2004	POP2005	POP2006	POP2007	POP2008	POP2009	POP2010	CHG2005	CHG2006	CHG2007	CHG2008	CHG2009	CHG2010	
06025	Imperial	White	28,965	28,652	28,358	28,175	27,947	27,757	27,897	27,990	28,089	28,200	28,322	-190	140	93	99	111	122	
06025	Imperial	Black	5,214	5,221	5,327	5,454	5,570	5,678	5,884	6,036	6,191	6,351	6,511	108	206	152	155	160	160	
06025	Imperial	American Indian	1,817	1,843	1,888	2,018	2,076	2,155	2,206	2,284	2,348	2,412	2,484	58	79	65	64	64	64	
06025	Imperial	Asian	2,662	2,769	2,953	3,214	3,436	3,677	3,917	4,120	4,325	4,532	4,738	241	240	203	205	207	206	
06025	Imperial	Pacific Islander	84	86	88	90	90	92	94	96	98	100	102	2	2	2	2	2	2	
06025	Imperial	Multirace	754	783	822	850	895	940	950	960	970	980	990	45	10	10	10	10	10	
06025	Imperial	Hispanic	104,267	107,081	110,783	115,418	119,888	124,520	129,336	133,559	137,841	142,193	146,600	4,632	4,816	4,223	4,282	4,352	4,407	
06029	Kern	White	332,431	335,646	339,015	343,505	348,465	354,615	362,417	366,032	369,718	373,471	377,280	6,150	7,802	3,615	3,686	3,753	3,809	
06029	Kern	Black	38,401	39,136	39,843	40,735	41,664	42,672	43,885	45,066	46,258	47,468	48,703	1,008	1,213	1,181	1,192	1,210	1,235	
06029	Kern	American Indian	6,074	6,171	6,267	6,391	6,541	6,669	6,863	6,942	7,018	7,090	7,162	128	194	79	76	72	72	
06029	Kern	Asian	22,184	23,042	23,955	25,159	26,496	27,883	29,523	30,288	31,057	31,835	32,619	1,387	1,640	765	769	778	784	
06029	Kern	Pacific Islander	759	763	769	777	783	791	807	823	839	855	871	8	16	16	16	16	16	
06029	Kern	Multirace	10,092	10,164	10,299	10,541	10,854	11,186	11,335	11,215	11,299	11,387	11,481	332	-51	80	84	88	94	
06029	Kern	Hispanic	255,578	267,083	279,196	293,822	309,686	326,335	344,845	356,729	368,818	381,119	393,612	16,649	18,510	11,884	12,089	12,301	12,493	
06037	Los Angeles	White	3,045,819	3,050,717	3,055,097	3,056,381	3,052,367	3,038,609	3,010,955	2,987,008	2,962,811	2,938,369	2,913,695	-13,758	-27,654	-23,947	-24,197	-24,442	-24,674	
06037	Los Angeles	Black	910,077	914,075	917,014	916,627	912,476	904,314	896,702	891,788	886,951	882,167	877,423	-8,162	-7,612	-4,914	-4,837	-4,784	-4,744	
06037	Los Angeles	American Indian	27,187	28,143	29,051	29,566	29,718	29,278	29,246	29,050	29,040	29,008	28,978	60	168	294	280	278	281	
06037	Los Angeles	Asian	1,165,096	1,208,951	1,251,415	1,282,043	1,300,190	1,300,915	1,317,476	1,338,055	1,358,357	1,378,338	1,397,967	725	16,561	20,579	20,302	19,981	19,629	
06037	Los Angeles	Pacific Islander	24,489	25,146	25,817	26,295	26,930	27,438	27,962	28,482	28,997	29,522	29,522	272	536	524	520	519	521	
06037	Los Angeles	Multirace	132,378	140,829	149,316	157,312	164,804	172,325	174,688	177,253	179,285	182,403	184,994	7,521	2,363	2,565	2,572	2,578	2,591	
06037	Los Angeles	Hispanic	4,273,914	4,379,277	4,482,535	4,578,294	4,666,225	4,743,483	4,805,246	4,870,855	4,938,416	5,008,069	5,079,973	77,258	61,763	65,609	67,561	69,653	71,904	
06059	Orange	White	1,472,752	1,473,139	1,470,977	1,468,792	1,463,248	1,452,952	1,444,413	1,438,475	1,432,398	1,426,206	1,419,887	-10,296	-8,539	-5,938	-6,077	-6,192	-6,319	
06059	Orange	Black	43,532	43,715	43,812	43,881	43,825	43,586	43,759	44,052	44,334	44,606	44,873	-239	173	293	282	272	267	
06059	Orange	American Indian	8,992	9,833	10,374	10,821	11,006	11,122	11,238	11,650	12,059	12,470	12,880	116	116	412	409	411	410	
06059	Orange	Asian	398,109	417,430	432,456	447,077	457,954	464,089	468,722	481,103	493,412	505,647	517,787	6,135	4,633	12,381	12,309	12,235	12,140	
06059	Orange	Pacific Islander	8,618	9,119	9,525	9,895	10,142	10,271	10,396	10,768	11,136	11,508	11,883	129	125	372	368	372	375	
06059	Orange	Multirace	45,704	48,183	50,752	53,370	55,994	58,675	59,381	60,086	60,798	61,522	62,256	2,681	706	705	712	724	734	
06059	Orange	Hispanic	886,127	917,263	945,164	972,154	996,501	1,018,365	1,040,486	1,069,277	1,098,505	1,128,167	1,158,270	21,864	22,121	28,791	29,228	29,662	30,103	
06065	Riverside	White	801,110	821,378	841,858	869,686	892,147	917,859	941,925	961,925	981,924	1,007,513	1,027,513	25,461	26,712	14,066	14,826	15,173	15,589	
06065	Riverside	Black	94,534	99,354	104,111	110,142	115,927	121,401	127,720	130,485	133,326	136,236	139,214	5,474	6,319	2,765	2,841	2,910	2,978	
06065	Riverside	American Indian	10,405	10,410	10,399	10,396	10,376	10,381	10,453	10,834	11,214	11,602	11,987	5	72	381	380	388	385	
06065	Riverside	Asian	57,464	60,989	64,619	69,279	73,930	78,488	83,532	87,965	92,666	97,351	102,074	4,558	5,044	4,433	4,701	4,685	4,723	
06065	Riverside	Pacific Islander	3,436	3,472	3,508	3,551	3,589	3,638	3,702	3,777	3,848	3,919	3,989	49	69	70	71	71	70	
06065	Riverside	Multirace	25,498	26,948	28,513	30,137	31,785	33,611	34,179	34,846	35,554	36,285	37,030	1,826	568	667	708	731	745	
06065	Riverside	Hispanic	566,592	599,299	632,931	673,764	713,892	755,065	798,027	831,765	866,259	901,412	937,246	41,173	42,962	33,738	34,494	35,153	35,834	
06071	San Bernardino	White	763,664	765,108	766,258	767,820	769,174	771,472	773,771	776,070	778,369	780,668	782,967	2,298	0	-371	-347	-306	-301	
06071	San Bernardino	Black	153,650	160,105	165,706	172,741	179,589	185,603	191,595	196,965	202,424	207,981	213,642	6,014	5,992	5,370	5,459	5,557	5,661	
06071	San Bernardino	American Indian	10,249	10,674	10,992	11,459	11,928	12,295	12,636	12,916	13,202	13,490	13,776	367	341	280	286	288	286	
06071	San Bernardino	Asian	81,589	85,424	88,813	93,112	97,364	101,231	104,766	107,883	110,993	114,104	117,205	3,867	3,535	3,117	3,110	3,111	3,101	
06071	San Bernardino	Pacific Islander	4,607	4,666	4,729	4,813	4,897	4,968	5,086	5,203	5,322	5,441	5,564	71	118	117	119	119	123	
06071	San Bernardino	Multirace	30,163	32,126	33,960	35,964	37,965	40,035	40,869	41,714	42,587	43,491	44,423	2,070	834	845	873	904	932	
06071	San Bernardino	Hispanic	678,020	712,534	744,267	782,783	821,550	858,515	890,559	920,328	950,636	981,470	1,012,839	36,965	32,044	29,769	30,308	30,834	31,369	
06073	San Diego	White	1,578,308	1,602,696	1,627,704	1,645,920	1,658,909	1,664,001	1,668,460	1,676,535	1,684,467	1,692,281	1,700,006	5,092	4,459	8,075	7,932	7,814	7,725	
06073	San Diego	Black	159,068	158,280	157,394	155,440	152,515	148,610	144,991	142,972	140,930	138,865	136,769	-3,905	-3,619	-2,019	-2,042	-2,065	-2,086	
06073	San Diego	American Indian	15,713	18,078	20,490	22,165	23,372	23,891	24,574	25,624	26,675	27,726	28,776	519	683	1,050	1,051	1,051	1,050	
06073	San Diego	Asian	251,447	258,856	266,290	272,304	277,072	280,994	284,442	290,002	295,477	300,875	306,194	3,022	4,348	5,560	5,475	5,398	5,319	
06073	San Diego	Pacific Islander	12,517	13,513	14,482	15,212	15,720	15,979	16,421	16,822	17,222	17,619	18,014	259	442	401	400	397	395	
06073	San Diego	Multirace	62,195	64,472	66,886	68,405	69,270	69,597	67,044	67,245	67,459	67,684	67,950	327	-2,553	201	214	235	256	
06073	San Diego	Hispanic	757,055	776,674	796,451	815,741	834,197	852,606	870,415	888,277	906,152	924,066	941,997	18,409	17,809	17,862	17,875	17,914	17,931	
06111	Ventura	White	433,052	439,053	443,567	447,055	448,699	447,514	447,977	448,371	450,828	452,335	453,905	-1,185	463	1,394	1,457	1,507	1,570	
06111	Ventura	Black	13,681	13,750	13,771	13,760	13,728	13,672	13,672	13,672	13,682	13,691	13,704	13,710	-56	0	10	9	13	6
06111	Ventura	American Indian	3,344	3,507	3,633	3,722	3,736	3,737	3,763	3,811	3,860	3,906	3,954	1	26	48	49	46	48	
06111	Ventura	Asian	40,751	42,217	43,430	44,408	45,005	45,146	45,468	46,052	46,628	47,195	47,747	141	322	584	576	567	552	
06111	Ventura	Pacific Islander	1,442	1,450	1,456	1,462	1,472	1,480	1,503	1,527	1,551	1,575	1,601	8	23	24	24	24	26	
06111	Ventura	Multirace	12,552	13,100	13,611	14,212	14,798	15,439	15,648	15,844	16,048	16,260	16,480	641	209	196	204	212	220	
06111	Ventura	Hispanic	254,062	261,370	268,570	275,273	281,297	286,645	292,211	298,696	305,234	311,827	318,479	5,348	5,566	6,485	6,538	6,593	6,652	

FIPS	COUNTY	RACE	BIRTHS2000	BIRTHS2001	BIRTHS2002	BIRTHS2003	BIRTHS2004	BIRTHS2005	BIRTHS2006	BIRTHS2007	BIRTHS2008	BIRTHS2009	BIRTHS2010	AVGBIRTHRT01_04
06025	Imperial	White	259	250	242	265	255	253	255	254	254	254	0.90%	
06025	Imperial	Black	15	21	17	16	19	19	20	20	20	21	0.32%	
06025	Imperial	American Indian	0	17	7	7	9	9	9	9	9	10	0.40%	

06037	Los Angeles	Pacific Islander	340	358	332	354	343	345	350	354	359	363	1.33%	
06037	Los Angeles	Multirace	6,730	6,797	6,989	7,113	7,451	7,461	7,521	7,590	7,657	7,717	4.52%	
06037	Los Angeles	Hispanic	96,724	95,388	95,232	94,686	95,760	95,822	96,494	97,313	98,151	98,942	2.11%	
06059	Orange	White	15,075	14,514	14,404	13,940	13,549	13,141	12,985	12,797	12,612	12,423	0.99%	
06059	Orange	Black	397	367	365	339	345	338	338	337	335	334	0.84%	
06059	Orange	American Indian	8	10	12	4	9	8	9	9	9	9	0.08%	
06059	Orange	Asian	5,318	5,085	5,490	5,816	5,430	5,351	5,449	5,531	5,610	5,684	1.24%	
06059	Orange	Pacific Islander	76	99	86	84	87	86	88	90	92	94	0.89%	
06059	Orange	Multirace	2,485	2,574	2,597	2,644	2,750	2,715	2,726	2,730	2,734	2,737	4.95%	
06059	Orange	Hispanic	22,782	22,303	22,231	22,130	22,519	22,448	22,888	23,272	23,657	24,032	2.34%	
06065	Riverside	White	7,975	7,840	8,271	8,569	8,863	9,272	9,424	9,567	9,713	9,858	0.95%	
06065	Riverside	Black	1,247	1,149	1,228	1,159	1,371	1,467	1,501	1,533	1,566	1,599	1.12%	
06065	Riverside	American Indian	53	43	48	43	47	48	50	52	54	55	0.45%	
06065	Riverside	Asian	545	584	721	807	779	843	889	936	983	1,030	0.98%	
06065	Riverside	Pacific Islander	38	38	47	40	42	44	45	46	46	47	1.15%	
06065	Riverside	Multirace	1,456	1,568	1,634	1,641	1,824	1,885	1,925	1,964	2,004	2,043	5.37%	
06065	Riverside	Hispanic	13,732	14,433	15,739	16,279	17,519	18,823	19,651	20,459	21,285	22,112	2.30%	
06071	San Bernardino	White	8,332	8,303	8,289	8,156	8,274	8,376	8,366	8,366	8,358	8,345	1.08%	
06071	San Bernardino	Black	2,313	2,331	2,377	2,323	2,548	2,662	2,739	2,813	2,888	2,964	1.38%	
06071	San Bernardino	American Indian	31	24	22	35	30	32	32	33	34	34	0.25%	
06071	San Bernardino	Asian	944	992	1,015	1,064	1,109	1,161	1,197	1,231	1,264	1,297	1.10%	
06071	San Bernardino	Pacific Islander	65	66	75	76	73	75	77	79	81	82	1.47%	
06071	San Bernardino	Multirace	1,800	1,709	1,829	1,835	2,046	2,114	2,160	2,203	2,249	2,294	5.14%	
06071	San Bernardino	Hispanic	15,368	15,878	16,906	17,598	18,344	19,255	19,916	20,558	21,212	21,865	2.15%	
06073	San Diego	White	15,566	15,405	15,785	16,629	16,117	16,036	16,016	15,990	15,968	15,935	0.97%	
06073	San Diego	Black	2,145	1,990	2,004	1,838	1,898	1,837	1,801	1,764	1,727	1,690	1.28%	
06073	San Diego	American Indian	64	67	73	94	84	86	89	92	95	98	0.35%	
06073	San Diego	Asian	2,888	2,864	3,160	3,049	3,114	3,138	3,180	3,219	3,258	3,294	1.11%	
06073	San Diego	Pacific Islander	125	87	131	131	128	131	133	136	138	140	0.81%	
06073	San Diego	Multirace	3,792	3,863	3,817	3,790	3,946	3,772	3,761	3,749	3,739	3,729	5.68%	
06073	San Diego	Hispanic	19,402	19,443	19,915	19,629	20,721	20,991	21,293	21,584	21,879	22,157	2.43%	
06111	Ventura	White	4,826	4,391	4,572	4,516	4,556	4,599	4,590	4,585	4,581	4,575	1.03%	
06111	Ventura	Black	138	111	111	86	110	111	110	110	109	109	0.81%	
06111	Ventura	American Indian	6	4	5	3	5	5	5	5	5	5	0.12%	
06111	Ventura	Asian	395	409	469	474	445	452	455	459	463	466	1.00%	
06111	Ventura	Pacific Islander	9	6	7	11	8	8	9	9	9	9	0.56%	
06111	Ventura	Multirace	647	593	657	605	687	702	708	714	720	726	4.50%	
06111	Ventura	Hispanic	5,564	5,916	6,050	6,220	6,193	6,367	6,475	6,588	6,703	6,813	2.19%	
FIPS	COUNTY	RACE	DEATHS2000	DEATHS2001	DEATHS2002	DEATHS2003	DEATHS2004	DEATHS2005	DEATHS2006	DEATHS2007	DEATHS2008	DEATHS2009	DEATHS2010	AVGDEATHRT01_04
06025	Imperial	White	340	393	385	401	358	354	383	386	390	394	1.34%	
06025	Imperial	Black	30	19	26	32	27	28	30	31	32	33	0.50%	
06025	Imperial	American Indian	6	6	8	13	8	9	10	10	10	11	0.42%	
06025	Imperial	Asian	17	22	16	6	18	21	21	22	24	25	0.51%	
06025	Imperial	Pacific Islander	1	0	0	0	0	0	0	0	0	0	0.29%	
06025	Imperial	Multirace	3	0	1	3	2	2	2	2	2	2	0.21%	
06025	Imperial	Hispanic	453	436	469	465	481	492	547	568	589	612	0.40%	
06029	Kern	White	3,704	3,728	3,916	4,043	3,897	3,910	4,170	4,236	4,306	4,374	1.13%	
06029	Kern	Black	264	281	291	312	296	299	324	335	345	356	0.71%	
06029	Kern	American Indian	24	14	20	26	22	23	24	24	24	24	0.33%	
06029	Kern	Asian	114	114	129	118	131	136	148	152	157	162	0.48%	
06029	Kern	Pacific Islander	2	5	2	7	4	4	4	4	5	5	0.52%	
06029	Kern	Multirace	9	10	27	18	17	17	17	17	18	18	0.15%	
06029	Kern	Hispanic	775	792	834	915	918	953	1,041	1,062	1,125	1,169	0.29%	
06037	Los Angeles	White	34,044	34,049	33,205	33,932	33,147	33,284	34,077	34,029	33,980	33,928	1.11%	
06037	Los Angeles	Black	8,368	8,553	8,319	8,493	8,190	8,230	8,447	8,457	8,470	8,483	0.92%	
06037	Los Angeles	American Indian	110	120	153	129	128	131	136	139	141	143	0.44%	
06037	Los Angeles	Asian	4,910	5,070	5,090	5,376	5,183	5,319	5,575	5,698	5,822	5,946	0.41%	
06037	Los Angeles	Pacific Islander	126	132	134	154	139	143	151	155	159	163	0.53%	
06037	Los Angeles	Multirace	61	68	124	170	115	118	123	126	129	131	0.07%	
06037	Los Angeles	Hispanic	11,399	11,897	12,378	12,912	12,501	12,834	13,425	13,703	13,992	14,291	0.27%	
06059	Orange	White	13,567	13,435	13,418	13,770	13,422	13,505	13,797	13,872	13,945	14,016	0.92%	
06059	Orange	Black	214	165	204	199	195	198	204	208	211	214	0.45%	
06059	Orange	American Indian	32	30	25	38	33	34	36	38	39	41	0.30%	
06059	Orange	Asian	1,204	1,244	1,297	1,417	1,366	1,397	1,471	1,523	1,576	1,629	0.29%	
06059	Orange	Pacific Islander	39	40	36	45	43	44	46	48	50	53	0.41%	
06059	Orange	Multirace	20	16	60	46	39	40	42	43	44	45	0.07%	
06059	Orange	Hispanic	1,627	1,697	1,817	1,979	1,893	1,958	2,064	2,141	2,220	2,301	0.19%	
06065	Riverside	White	10,108	10,245	10,204	10,640	10,371	10,427	11,718	11,988	12,265	12,547	1.20%	
06065	Riverside	Black	597	661	674	683	693	712	805	829	854	878	0.61%	
06065	Riverside	American Indian	61	65	63	70	61	60	68	71	74	77	0.62%	
06065	Riverside	Asian	205	215	245	284	258	269	313	333	352	372	0.35%	
06065	Riverside	Pacific Islander	13	16	23	16	16	16	18	19	19	20	0.48%	
06065	Riverside	Multirace	18	14	25	48	28	27	31	32	33	34	0.09%	
06065	Riverside	Hispanic	1,435	1,668	1,713	1,880	1,804	1,863	2,150	2,256	2,365	2,477	0.26%	
06071	San Bernardino	White	8,190	8,240	8,211	8,276	8,157	8,154	8,616	8,692	8,770	8,846	1.07%	
06071	San Bernardino	Black	850	942	976	1,087	1,038	1,071	1,164	1,207	1,252	1,298	0.57%	

06071	San Bernardino	American Indian	46	65	50	52	57	59	64	66	68	70	0.47%
06071	San Bernardino	Asian	270	265	279	353	318	329	359	372	386	400	0.32%
06071	San Bernardino	Pacific Islander	26	21	28	25	26	26	28	29	30	31	0.52%
06071	San Bernardino	Multirace	17	16	31	40	29	29	32	33	34	35	0.07%
06071	San Bernardino	Hispanic	1,883	1,946	2,129	2,468	2,323	2,409	2,632	2,743	2,859	2,977	0.27%
06073	San Diego	White	15,706	15,454	14,986	15,874	15,527	15,672	16,115	16,243	16,370	16,497	0.95%
06073	San Diego	Black	888	905	882	954	851	835	843	834	824	814	0.58%
06073	San Diego	American Indian	71	80	89	87	91	95	101	105	110	115	0.39%
06073	San Diego	Asian	837	898	941	939	926	947	987	1,009	1,031	1,053	0.34%
06073	San Diego	Pacific Islander	66	72	72	94	81	84	88	90	92	95	0.51%
06073	San Diego	Multirace	55	44	74	138	78	76	78	79	79	80	0.11%
06073	San Diego	Hispanic	2,107	2,041	2,287	2,335	2,279	2,342	2,446	2,503	2,561	2,619	0.27%
06111	Ventura	White	3,798	3,829	3,834	4,080	3,952	3,982	4,015	4,045	4,076	4,105	0.87%
06111	Ventura	Black	77	88	83	83	83	84	84	85	85	85	0.60%
06111	Ventura	American Indian	8	7	14	12	11	11	11	11	11	11	0.28%
06111	Ventura	Asian	136	149	149	174	158	160	163	166	169	171	0.35%
06111	Ventura	Pacific Islander	8	6	4	5	6	6	6	6	6	7	0.39%
06111	Ventura	Multirace	3	4	11	8	7	7	8	8	8	8	0.05%
06111	Ventura	Hispanic	729	699	733	789	787	807	829	851	873	895	0.27%

FIPS	COUNTY	RACE	NAT2000	NAT2001	NAT2002	NAT2003	NAT2004	NAT2005	NAT2006	NAT2007	NAT2008	NAT2009	NAT2010
06025	Imperial	White		-81	-143	-143	-136	-103	-101	-128	-132	-136	-140
06025	Imperial	Black		-15	2	-9	-16	-8	-9	-10	-11	-12	-12
06025	Imperial	American Indian		-6	11	-1	-6	1	0	-1	-1	-1	-1
06025	Imperial	Asian		3	-2	10	6	6	6	6	6	5	5
06025	Imperial	Pacific Islander		-1	0	2	1	1	1	1	1	1	1
06025	Imperial	Multirace		27	39	27	42	39	38	39	39	40	40
06025	Imperial	Hispanic		1,786	1,810	2,014	2,105	2,196	2,253	2,300	2,354	2,412	2,465
06029	Kern	White		49	-2	-84	-96	109	202	-40	-77	-117	-156
06029	Kern	Black		347	290	349	323	361	380	369	375	381	387
06029	Kern	American Indian		-7	-3	-9	-7	-7	-6	-7	-8	-8	-8
06029	Kern	Asian		150	153	163	193	193	209	204	207	210	213
06029	Kern	Pacific Islander		3	1	6	-1	2	3	3	3	2	2
06029	Kern	Multirace		517	557	556	597	602	603	603	606	608	611
06029	Kern	Hispanic		5,735	5,984	6,322	6,702	7,139	7,598	7,755	7,985	8,218	8,449
06037	Los Angeles	White		-7,688	-8,043	-6,725	-7,700	-8,070	-8,739	-9,886	-10,162	-10,438	-10,728
06037	Los Angeles	Black		3,383	2,442	2,352	1,776	2,129	1,877	1,539	1,422	1,303	1,177
06037	Los Angeles	American Indian		-44	-71	-101	-88	-77	-80	-85	-88	-90	-92
06037	Los Angeles	Asian		7,893	6,985	7,522	7,213	7,175	7,043	6,898	6,897	6,889	6,866
06037	Los Angeles	Pacific Islander		214	226	198	200	204	202	199	199	200	200
06037	Los Angeles	Multirace		6,669	6,729	6,865	6,943	7,336	7,343	7,398	7,464	7,528	7,586
06037	Los Angeles	Hispanic		85,325	83,491	82,854	81,774	83,259	82,988	83,069	83,610	84,159	84,651
06059	Orange	White		1,508	1,079	986	170	127	-364	-812	-1,075	-1,333	-1,593
06059	Orange	Black		183	202	161	140	150	140	134	129	124	120
06059	Orange	American Indian		-24	-20	-13	-34	-24	-26	-27	-29	-30	-32
06059	Orange	Asian		4,114	3,841	4,193	4,399	4,064	3,954	3,978	4,008	4,034	4,055
06059	Orange	Pacific Islander		37	59	60	39	44	42	42	42	42	41
06059	Orange	Multirace		2,465	2,558	2,537	2,598	2,711	2,675	2,684	2,687	2,690	2,692
06059	Orange	Hispanic		21,155	20,606	20,414	20,151	20,626	20,490	20,824	21,131	21,437	21,731
06065	Riverside	White		-2,133	-2,405	-1,933	-2,071	-1,508	-1,155	-2,294	-2,421	-2,552	-2,689
06065	Riverside	Black		650	488	554	476	678	755	696	704	712	721
06065	Riverside	American Indian		-8	-22	-15	-27	-14	-12	-18	-19	-20	-22
06065	Riverside	Asian		340	369	476	523	521	574	576	603	631	658
06065	Riverside	Pacific Islander		25	22	24	24	26	28	27	27	27	27
06065	Riverside	Multirace		1,438	1,554	1,609	1,593	1,796	1,858	1,894	1,932	1,971	2,009
06065	Riverside	Hispanic		12,297	12,765	14,026	14,399	15,715	16,960	17,501	18,203	18,920	19,635
06071	San Bernardino	White		142	63	78	-120	117	218	-240	-326	-412	-501
06071	San Bernardino	Black		1,463	1,389	1,401	1,236	1,510	1,591	1,575	1,606	1,636	1,666
06071	San Bernardino	American Indian		-15	-41	-28	-17	-27	-32	-33	-33	-34	-36
06071	San Bernardino	Asian		674	727	736	711	791	832	838	859	878	897
06071	San Bernardino	Pacific Islander		39	45	47	51	47	49	50	51	51	51
06071	San Bernardino	Multirace		1,783	1,693	1,798	1,795	2,017	2,085	2,128	2,170	2,215	2,259
06071	San Bernardino	Hispanic		13,486	13,932	14,777	15,130	16,021	16,846	17,284	17,815	18,353	18,888
06073	San Diego	White		-140	-49	799	755	590	364	-99	-253	-402	-562
06073	San Diego	Black		1,257	1,085	1,122	884	1,047	1,002	958	930	903	876
06073	San Diego	American Indian		-7	-13	-16	7	-7	-9	-12	-13	-15	-17
06073	San Diego	Asian		2,051	1,966	2,219	2,110	2,188	2,191	2,193	2,210	2,227	2,241
06073	San Diego	Pacific Islander		59	15	59	37	47	47	45	46	46	45
06073	San Diego	Multirace		3,737	3,819	3,743	3,652	3,868	3,696	3,683	3,670	3,660	3,649
06073	San Diego	Hispanic		17,295	17,402	17,628	17,294	18,442	18,649	18,847	19,081	19,318	19,538
06111	Ventura	White		1,028	562	738	436	604	617	575	540	505	470
06111	Ventura	Black		61	23	28	3	27	27	26	25	24	24
06111	Ventura	American Indian		-2	-3	-9	-9	-6	-6	-6	-6	-6	-6
06111	Ventura	Asian		259	260	320	300	287	292	292	293	294	295
06111	Ventura	Pacific Islander		1	0	3	6	2	2	3	3	3	2
06111	Ventura	Multirace		644	589	646	597	680	695	701	706	712	718
06111	Ventura	Hispanic		4,835	5,217	5,317	5,431	5,406	5,560	5,646	5,737	5,830	5,918

FIPS	COUNTY	RACE	NM2000	NM2001	NM2002	NM2003	NM2004	NM2005	NM2006	NM2007	NM2008	NM2009	NM2010
06025	Imperial	White		-106	476	686	631	-87	241	221	231	247	262
06025	Imperial	Black		5	4	53	51	116	215	162	166	172	172
06025	Imperial	American Indian		42	34	52	55	57	79	66	65	65	65
06025	Imperial	Asian		13	4	10	9	235	234	197	199	202	201
06025	Imperial	Pacific Islander		2	1	-1	0	1	1	1	1	1	1
06025	Imperial	Multirace		17	4	23	2	6	-28	-29	-29	-30	-30
06025	Imperial	Hispanic		950	1,477	2,076	1,838	2,436	2,563	1,923	1,928	1,940	1,942
06029	Kern	White		2,926	2,522	4,755	6,658	6,041	7,600	3,655	3,763	3,870	3,965
06029	Kern	Black		317	367	559	810	647	833	812	817	829	848
06029	Kern	American Indian		192	59	82	118	135	200	86	84	80	80
06029	Kern	Asian		734	899	1,026	1,129	1,194	1,431	561	562	568	571
06029	Kern	Pacific Islander		13	-5	-4	5	6	13	13	13	14	14
06029	Kern	Multirace		-135	-486	-406	-414	-270	-654	-523	-522	-520	-517
06029	Kern	Hispanic		5,757	6,993	8,274	9,445	9,510	10,912	4,129	4,104	4,083	4,044
06037	Los Angeles	White		28,897	9,946	580	-13,827	-5,688	-18,915	-14,061	-14,035	-14,004	-13,946
06037	Los Angeles	Black		-4,148	-9,589	-12,425	-16,933	-10,291	-9,489	-6,453	-6,259	-6,087	-5,921
06037	Los Angeles	American Indian		486	887	659	425	137	248	379	378	368	373
06037	Los Angeles	Asian		21,486	30,796	27,644	21,884	-6,450	9,518	13,681	13,405	13,092	12,763
06037	Los Angeles	Pacific Islander		461	619	592	400	68	334	325	321	319	321
06037	Los Angeles	Multirace		-1,328	5,922	3,622	-149	185	-4,980	-4,833	-4,892	-4,950	-4,995
06037	Los Angeles	Hispanic		26,924	33,045	23,434	1,342	-6,001	-21,225	-17,460	-16,049	-14,506	-12,747
06059	Orange	White		6,734	-7,956	-9,626	-13,463	-10,423	-8,175	-5,126	-5,002	-4,859	-4,726
06059	Orange	Black		-377	-1,328	-1,386	-1,548	-389	33	159	153	148	147
06059	Orange	American Indian		405	329	591	599	140	142	439	438	441	442
06059	Orange	Asian		11,696	14,157	13,762	12,527	2,071	679	8,403	8,301	8,201	8,085
06059	Orange	Pacific Islander		241	478	474	427	85	83	330	326	330	334
06059	Orange	Multirace		-434	737	425	-599	-30	-1,969	-1,979	-1,975	-1,966	-1,958
06059	Orange	Hispanic		7,196	9,639	8,995	6,225	1,238	1,631	7,967	8,097	8,225	8,372
06065	Riverside	White		20,907	12,701	19,570	20,823	26,969	27,867	16,360	17,247	17,725	18,278
06065	Riverside	Black		799	359	1,090	1,233	4,796	5,564	2,069	2,137	2,198	2,257
06065	Riverside	American Indian		590	500	565	610	19	84	399	399	408	407
06065	Riverside	Asian		5,667	9,033	9,570	9,683	4,037	4,470	3,857	4,098	4,054	4,065
06065	Riverside	Pacific Islander		179	97	126	121	23	41	43	44	44	43
06065	Riverside	Multirace		11	-1,029	889	281	30	-1,290	-1,227	-1,224	-1,240	-1,264
06065	Riverside	Hispanic		22,304	29,827	34,262	34,966	25,458	26,002	16,237	16,291	16,233	16,199
06071	San Bernardino	White		6,384	-8,225	-3,784	-2,531	-2,181	-218	-131	-21	106	200
06071	San Bernardino	Black		950	2,409	3,170	3,437	4,504	4,401	3,795	3,853	3,921	3,995
06071	San Bernardino	American Indian		414	402	413	428	394	368	312	319	322	322
06071	San Bernardino	Asian		2,870	3,118	3,598	3,746	3,076	2,703	2,279	2,251	2,233	2,204
06071	San Bernardino	Pacific Islander		194	84	108	98	24	69	68	69	68	72
06071	San Bernardino	Multirace		-769	-1,606	-1,810	-1,825	53	-1,251	-1,283	-1,297	-1,311	-1,327
06071	San Bernardino	Hispanic		21,381	30,356	33,583	34,208	20,944	15,198	12,485	12,493	12,481	12,481
06073	San Diego	White		26,601	24,300	16,727	9,852	4,502	4,095	8,174	8,185	8,216	8,287
06073	San Diego	Black		-2,178	-2,281	-3,105	-3,647	-4,952	-4,621	-2,977	-2,972	-2,968	-2,972
06073	San Diego	American Indian		1,234	2,134	2,071	2,036	526	692	1,062	1,064	1,066	1,067
06073	San Diego	Asian		4,177	5,459	4,189	3,191	834	2,157	3,367	3,265	3,171	3,078
06073	San Diego	Pacific Islander		432	912	824	756	212	395	356	354	351	350
06073	San Diego	Multirace		-2,128	-1,560	-1,745	-2,773	-3,541	-6,249	-3,482	-3,456	-3,425	-3,393
06073	San Diego	Hispanic		4,034	4,248	1,019	-2,004	-33	-840	-985	-1,206	-1,404	-1,607
06111	Ventura	White		480	-1,183	-2,501	-3,945	-1,789	-154	819	917	1,002	1,100
06111	Ventura	Black		-195	-332	-395	-447	-83	-27	-16	-16	-11	-18
06111	Ventura	American Indian		132	112	98	86	7	32	54	55	52	54
06111	Ventura	Asian		2,266	3,449	3,327	3,178	-146	30	292	283	273	257
06111	Ventura	Pacific Islander		43	27	19	8	6	21	21	21	21	24
06111	Ventura	Multirace		-241	-442	-504	-527	-39	-486	-505	-502	-500	-498
06111	Ventura	Hispanic		6,293	5,319	4,745	3,620	-58	6	839	801	763	734

FIPS	COUNTY	BIRTHS2001	BIRTHS2002	BIRTHS2003	BIRTHS2004	BIRTHS2005	BIRTHS2006	BIRTHS2007	BIRTHS2008	BIRTHS2009	BIRTHS2010
06025	Imperial	2,563	2,593	2,805	2,916	3,024	3,093	3,199	3,276	3,355	3,434
06029	Kern	11,686	11,924	12,522	13,150	13,685	14,329	14,614	14,940	15,275	15,607
06037	Los Angeles	155,130	151,648	152,368	151,284	151,360	150,694	151,066	151,651	152,243	152,745
06059	Orange	46,141	44,952	45,185	44,957	44,690	44,088	44,482	44,763	45,051	45,313
06065	Riverside	25,046	25,655	27,688	28,538	30,446	32,382	33,486	34,555	35,650	36,745
06071	San Bernardino	28,853	29,303	30,513	31,087	32,425	33,670	34,498	35,283	36,087	36,883
06073	San Diego	43,982	43,719	44,885	45,160	46,008	45,991	46,273	46,535	46,804	47,045
06111	Ventura	11,585	11,430	11,871	11,915	12,004	12,242	12,352	12,469	12,589	12,703

FIPS	COUNTY	BIRTHS2005	BIRTHS2006	BIRTHS2007	BIRTHS2008	BIRTHS2009	BIRTHS2010
06025	Imperial	3,026	3,092	3,200	3,275	3,356	3,435
06029	Kern	13,684	14,329	14,614	14,941	15,274	15,606
06037	Los Angeles	151,359	150,693	151,066	151,649	152,244	152,745
06059	Orange	44,689	44,087	44,483	44,766	45,049	45,313
06065	Riverside	30,445	32,382	33,485	34,557	35,651	36,744
06071	San Bernardino	32,424	33,671	34,497	35,283	36,086	36,881

06073	San Diego	46,008	45,991	46,273	46,534	46,804	47,043
06111	Ventura	12,004	12,244	12,352	12,470	12,590	12,703

FIPS	COUNTY	ADJDIF%2005	ADJDIF%2006	ADJDIF%2007	ADJDIF%2008	ADJDIF%2009	ADJDIF%2010
06025	Imperial	-0.07%	0.03%	-0.03%	0.03%	-0.03%	-0.03%
06029	Kern	0.01%	0.00%	0.00%	-0.01%	0.01%	0.01%
06037	Los Angeles	0.00%	0.00%	0.00%	0.00%	0.00%	0.00%
06059	Orange	0.00%	0.00%	0.00%	-0.01%	0.00%	0.00%
06065	Riverside	0.00%	0.00%	0.00%	-0.01%	0.00%	0.00%
06071	San Bernardino	0.00%	0.00%	0.00%	0.00%	0.00%	0.01%
06073	San Diego	0.00%	0.00%	0.00%	0.00%	0.00%	0.00%
06111	Ventura	0.00%	-0.02%	0.00%	-0.01%	-0.01%	0.00%

FIPS	COUNTY	DIFF%2005	DIFF%2006	DIFF%2007	DIFF%2008	DIFF%2009	DIFF%2010
06025	Imperial	2.20%	0.91%	1.36%	0.80%	0.33%	-0.20%
06029	Kern	1.19%	1.63%	1.07%	0.76%	0.47%	0.15%
06037	Los Angeles	-4.39%	-5.56%	-6.18%	-6.68%	-7.18%	-7.76%
06059	Orange	-5.41%	-7.71%	-8.44%	-9.38%	-10.30%	-11.25%
06065	Riverside	1.01%	2.69%	2.85%	2.82%	2.80%	2.71%
06071	San Bernardino	-0.52%	0.66%	0.75%	0.68%	0.62%	0.50%
06073	San Diego	-0.13%	-0.89%	-1.49%	-2.11%	-2.70%	-3.34%
06111	Ventura	-1.12%	-0.29%	-0.80%	-1.23%	-1.63%	-2.10%

FIPS	COUNTY	DEATHS2001	DEATHS2002	DEATHS2003	DEATHS2004	DEATHS2005	DEATHS2006	DEATHS2007	DEATHS2008	DEATHS2009	DEATHS2010
06025	Imperial	850	876	905	920	894	903	993	1,020	1,048	1,076
06029	Kern	4,892	4,944	5,219	5,439	5,283	5,340	5,726	5,851	5,979	6,108
06037	Los Angeles	59,378	59,889	59,403	61,166	59,403	60,058	61,935	62,308	62,691	63,084
06059	Orange	16,703	16,627	16,857	17,494	16,991	17,176	17,662	17,873	18,086	18,299
06065	Riverside	12,437	12,884	12,947	13,621	13,230	13,374	15,103	15,529	15,962	16,404
06071	San Bernardino	11,282	11,495	11,704	12,301	11,948	12,077	12,894	13,144	13,398	13,656
06073	San Diego	19,730	19,494	19,331	20,421	19,834	20,050	20,659	20,864	21,069	21,272
06111	Ventura	4,759	4,782	4,828	5,151	5,003	5,057	5,117	5,171	5,227	5,283

FIPS	COUNTY	DEATHS2005	DEATHS2006	DEATHS2007	DEATHS2008	DEATHS2009	DEATHS2010
06025	Imperial	894	904	993	1,019	1,047	1,077
06029	Kern	5,285	5,340	5,727	5,850	5,980	6,108
06037	Los Angeles	59,403	60,059	61,934	62,307	62,693	63,085
06059	Orange	16,991	17,176	17,660	17,873	18,085	18,299
06065	Riverside	13,231	13,374	15,103	15,528	15,962	16,405
06071	San Bernardino	11,948	12,077	12,895	13,142	13,399	13,657
06073	San Diego	19,833	20,051	20,658	20,863	21,067	21,273
06111	Ventura	5,004	5,057	5,115	5,172	5,228	5,282

FIPS	COUNTY	ADJDIF%2005	ADJDIF%2006	ADJDIF%2007	ADJDIF%2008	ADJDIF%2009	ADJDIF%2010
06025	Imperial	0.00%	-0.11%	0.00%	0.10%	0.10%	-0.09%
06029	Kern	-0.04%	0.00%	-0.02%	0.02%	-0.02%	0.00%
06037	Los Angeles	0.00%	0.00%	0.00%	0.00%	0.00%	0.00%
06059	Orange	0.00%	0.00%	0.01%	0.00%	0.01%	0.00%
06065	Riverside	-0.01%	0.00%	0.00%	0.01%	0.00%	-0.01%
06071	San Bernardino	0.00%	0.01%	-0.01%	0.02%	-0.01%	-0.01%
06073	San Diego	0.01%	0.00%	0.00%	0.00%	0.01%	0.00%
06111	Ventura	-0.02%	0.00%	0.04%	-0.02%	-0.02%	0.02%

FIPS	COUNTY	DIFF%2005	DIFF%2006	DIFF%2007	DIFF%2008	DIFF%2009	DIFF%2010
06025	Imperial	-4.08%	-5.54%	1.74%	2.31%	2.95%	3.66%
06029	Kern	-2.40%	-4.16%	1.18%	1.77%	2.40%	2.98%
06037	Los Angeles	-1.73%	-0.42%	2.77%	3.46%	4.18%	4.90%
06059	Orange	0.17%	1.39%	4.00%	5.01%	6.03%	7.04%
06065	Riverside	-6.36%	-8.50%	1.32%	2.08%	2.84%	3.58%
06071	San Bernardino	-1.44%	-1.48%	4.16%	5.12%	6.11%	7.06%
06073	San Diego	-1.70%	-1.04%	1.26%	1.59%	1.91%	2.23%
06111	Ventura	1.07%	1.73%	2.26%	2.68%	3.12%	3.51%

DATA SOURCES:

POP2000-POP2010: State of California, Department of Finance, Race/Ethnic Population with Age and Sex Detail, 2000-2050. Sacramento, CA, July 2007.
 BIRTHS2001-BIRTHS2004, DEATHS2001-DEATHS2004, NM2001-NM2004: State of California, Department of Finance, California County Race/Ethnic Population Estimates and Components of Change by Year, July 1, 2000-2004. Sacramento, California, March 2006
 BIRTHS2001-BIRTHS2006 (COUNTY TOTALS): State of California, Department of Finance, County Population Estimates and Components of Change by County, July 1, 2000-2006. Sacramento, California, December 2006.
 BIRTHS2007-BIRTHS2010: State of California, Department of Finance, Demographic Research Unit, Historical and Projected Births by County, 1990-2015, with Actual and Projected State Births and Fertility Rates by Mother's Age and Race Ethnicity, 2006
 DEATHS2001-DEATHS2006 (COUNTY TOTALS): State of California, Department of Finance, County Population Estimates and Components of Change by County, July 1, 2000-2006. Sacramento, California, December 2006.

CALCULATION NOTES:

CHG2005-CHG2010: Change in population year-over-year (e.g. CHG2005 = POP2005 - POP2004).
 BIRTHS2005-BIRTHS2010: Births calculated using the average birth rate from 2001 to 2004 shown in field AVGBIRTHRT01_04 and adjusted to county totals.
 DEATHS2005-DEATHS2010: Deaths calculated using the average mortality rate from 2001 to 2004 shown in field AVGDEATHRT01_04 and adjusted to county totals.
 NAT2001-NAT2010: Natural population increase calculated as the difference between births and deaths (e.g., NAT2001 = BIRTHS2001 - DEATHS2001).
 NM2005-NM2010: Net migration calculated as the difference between population change and natural increase (e.g., NM2005 = CHG2005 - NAT2005).

		NET MIGRATION										
FIPS	COUNTY	RACE	2001	2002	2003	2004	2005	2006	2007	2008	2009	2010
06025	Imperial	White	-106	476	686	631	-87	241	221	231	247	262
06025	Imperial	Black	5	4	53	51	116	215	162	166	172	172
06025	Imperial	American Indian	42	34	52	55	57	79	66	65	65	65
06025	Imperial	Asian	13	4	10	9	235	234	197	199	202	201
06025	Imperial	Pacific Islander	2	1	-1	0	1	1	1	1	1	1
06025	Imperial	Multirace	17	4	23	2	6	-28	-29	-29	-30	-30
06025	Imperial	Hispanic	950	1,477	2,076	1,838	2,436	2,563	1,923	1,928	1,940	1,942
06029	Kern	White	2,926	2,522	4,755	6,658	6,041	7,600	3,655	3,763	3,870	3,965
06029	Kern	Black	317	367	559	810	647	833	812	817	829	848
06029	Kern	American Indian	192	59	82	118	135	200	86	84	80	80
06029	Kern	Asian	734	899	1,026	1,129	1,194	1,431	561	562	568	571
06029	Kern	Pacific Islander	13	-5	-4	5	6	13	13	13	14	14
06029	Kern	Multirace	-135	-486	-406	-414	-270	-654	-523	-522	-520	-517
06029	Kern	Hispanic	5,757	6,993	8,274	9,445	9,510	10,912	4,129	4,104	4,083	4,044
06037	Los Angeles	White	28,897	9,946	580	-13,827	-5,688	-18,915	-14,061	-14,035	-14,004	-13,946
06037	Los Angeles	Black	-4,148	-9,589	-12,425	-16,933	-10,291	-9,489	-6,453	-6,259	-6,087	-5,921
06037	Los Angeles	American Indian	486	887	659	425	137	248	379	378	368	373
06037	Los Angeles	Asian	21,486	30,796	27,644	21,884	-6,450	9,518	13,681	13,405	13,092	12,763
06037	Los Angeles	Pacific Islander	461	619	592	400	68	334	325	321	319	321
06037	Los Angeles	Multirace	-1,328	5,922	3,622	-149	185	-4,980	-4,833	-4,892	-4,950	-4,995
06037	Los Angeles	Hispanic	26,924	33,045	23,434	1,342	-6,001	-21,225	-17,460	-16,049	-14,506	-12,747
06059	Orange	White	6,734	-7,956	-9,626	-13,463	-10,423	-8,175	-5,126	-5,002	-4,859	-4,726
06059	Orange	Black	-377	-1,328	-1,386	-1,548	-389	33	159	153	148	147
06059	Orange	American Indian	405	329	591	509	140	439	438	441	442	442
06059	Orange	Asian	11,896	14,157	13,762	12,527	2,071	679	8,403	8,301	8,201	8,085
06059	Orange	Pacific Islander	241	478	474	427	85	83	330	326	330	334
06059	Orange	Multirace	-434	737	425	-599	-30	-1,969	-1,979	-1,975	-1,966	-1,958
06059	Orange	Hispanic	7,196	9,639	8,995	6,225	1,238	1,631	7,967	8,097	8,225	8,372
06065	Riverside	White	20,907	12,701	19,570	20,823	26,969	27,867	16,360	17,247	17,725	18,278
06065	Riverside	Black	799	359	1,090	1,233	4,796	5,564	2,069	2,137	2,198	2,257
06065	Riverside	American Indian	590	500	565	610	19	84	399	399	408	407
06065	Riverside	Asian	5,667	9,033	9,570	9,683	4,037	4,470	3,857	4,098	4,054	4,065
06065	Riverside	Pacific Islander	179	97	126	121	23	41	43	44	44	43
06065	Riverside	Multirace	11	-1,029	889	281	30	-1,290	-1,227	-1,224	-1,240	-1,264
06065	Riverside	Hispanic	22,304	29,827	34,262	34,966	25,458	26,002	16,237	16,291	16,233	16,199
06071	San Bernardino	White	6,384	-8,225	-3,764	-2,531	2,181	-218	-131	-21	106	200
06071	San Bernardino	Black	950	2,409	3,170	3,437	4,504	4,401	3,795	3,853	3,921	3,995
06071	San Bernardino	American Indian	414	402	413	428	394	368	312	319	322	322
06071	San Bernardino	Asian	2,870	3,118	3,598	3,746	3,076	2,703	2,279	2,251	2,233	2,204
06071	San Bernardino	Pacific Islander	194	84	108	98	24	69	68	69	68	72
06071	San Bernardino	Multirace	-769	-1,606	-1,810	-1,825	53	-1,251	-1,283	-1,297	-1,311	-1,327
06071	San Bernardino	Hispanic	21,381	30,356	33,583	34,208	20,944	15,198	12,485	12,493	12,481	12,481
06073	San Diego	White	26,601	24,300	16,727	9,852	4,502	4,095	8,174	8,185	8,216	8,287
06073	San Diego	Black	-2,178	-2,281	-3,105	-3,647	-4,952	-4,621	-2,977	-2,972	-2,968	-2,972
06073	San Diego	American Indian	1,234	2,134	2,071	2,036	526	692	1,062	1,064	1,066	1,067
06073	San Diego	Asian	4,177	5,459	4,189	3,191	834	2,157	3,367	3,265	3,171	3,078
06073	San Diego	Pacific Islander	432	912	824	796	212	395	356	354	351	350
06073	San Diego	Multirace	-2,128	-1,560	-1,745	-2,773	-3,541	-6,249	-3,482	-3,456	-3,425	-3,393
06073	San Diego	Hispanic	4,034	4,248	1,019	-2,004	-33	-840	-985	-1,206	-1,404	-1,607
06111	Ventura	White	480	-1,183	-2,501	-3,945	-1,789	-154	819	917	1,002	1,100
06111	Ventura	Black	-195	-332	-395	-447	-83	-27	-16	-11	-11	-18
06111	Ventura	American Indian	132	112	98	86	7	32	54	55	52	54
06111	Ventura	Asian	2,266	3,449	3,327	3,178	-146	30	292	283	273	257
06111	Ventura	Pacific Islander	43	27	19	8	6	21	21	21	21	24
06111	Ventura	Multirace	-241	-442	-504	-527	-39	-486	-505	-502	-500	-498
06111	Ventura	Hispanic	6,293	5,319	4,745	3,620	-58	6	839	801	763	734